

TANG EV

BYD
BUILD YOUR DREAMS





TANG EV – Pure Electric Seven Seat Powerhouse

Life is full of compromises, but it doesn't have to be. Introducing TANG EV, a seven seat pure electric performance SUV.

TANG EV brings seven seat mobility to a new level with a stunning Dragon Face design language, and near limitless capabilities. Propelled by two electric motors, TANG EV accelerates with ferocity as its 517 horsepower are silently delivered to the four wheels.

Despite the muscle car performance, TANG EV lets drivers have their cake and eat it too, with 1,655 liters of storage space and seven seat practicality, TANG EV does it all.

King of the Road

Commanding, powerful, and elegant. TANG EV makes its presence known wherever it goes.



Built for the Road, Developed on the Track

The performance of TANG EV is breathtaking. 0-100km/h is dealt with in just 4.4 seconds. 22 inch wheels fitted with low profile Continental® (Optional) tires don't just grip the road, they bear hug the road as they put the pure electric power to the ground.

TANG EV does more than just fly in a straight line. Handling has been refined by a world-renowned German chassis expert, whom after more than 4,000 hours of chassis and suspension adjustment, deemed TANG EV ready for the road.

When the laws of physics get in the way of our performance targets, BYD develops innovative solutions to defy them. Using one of the most advanced electronic control packages in the world, including SiC MOSFET technology, helps TANG EV go more than 500km on a single charge.



Seven Seats,
Infinite Possibilities





Dream Chamber Cabin

The cabin of TANG EV is appointed with premium, hand selected elements, with the relationship between technology and luxury beautifully balanced.

The panoramic glass roof allows light to bathe the luxurious interior. The seven seats are wrapped in leather with quilting and contrast stitching.

While TANG EV insulates its occupants from the outside world, its technology package keeps drivers and passengers connected, with a rotating touchscreen compatible with millions of apps.

Historically Inspired, Futuristically Designed



TANG EV has been designed by a team of international design experts who bring a unique interpretation on modern vehicle design.

A marriage of Eastern artistic inspiration and contemporary Western design, TANG EV represents the spirit of its namesake TANG Dynasty.



Electrifying Performance

Dual electric motors provide 517hp, with a glass-smooth 4.4 second 0-100km/h sprint.

An All-Star Cast

TANG EV is the fastest SUV BYD has ever built, and is made possible by working together with its world-leading partners.

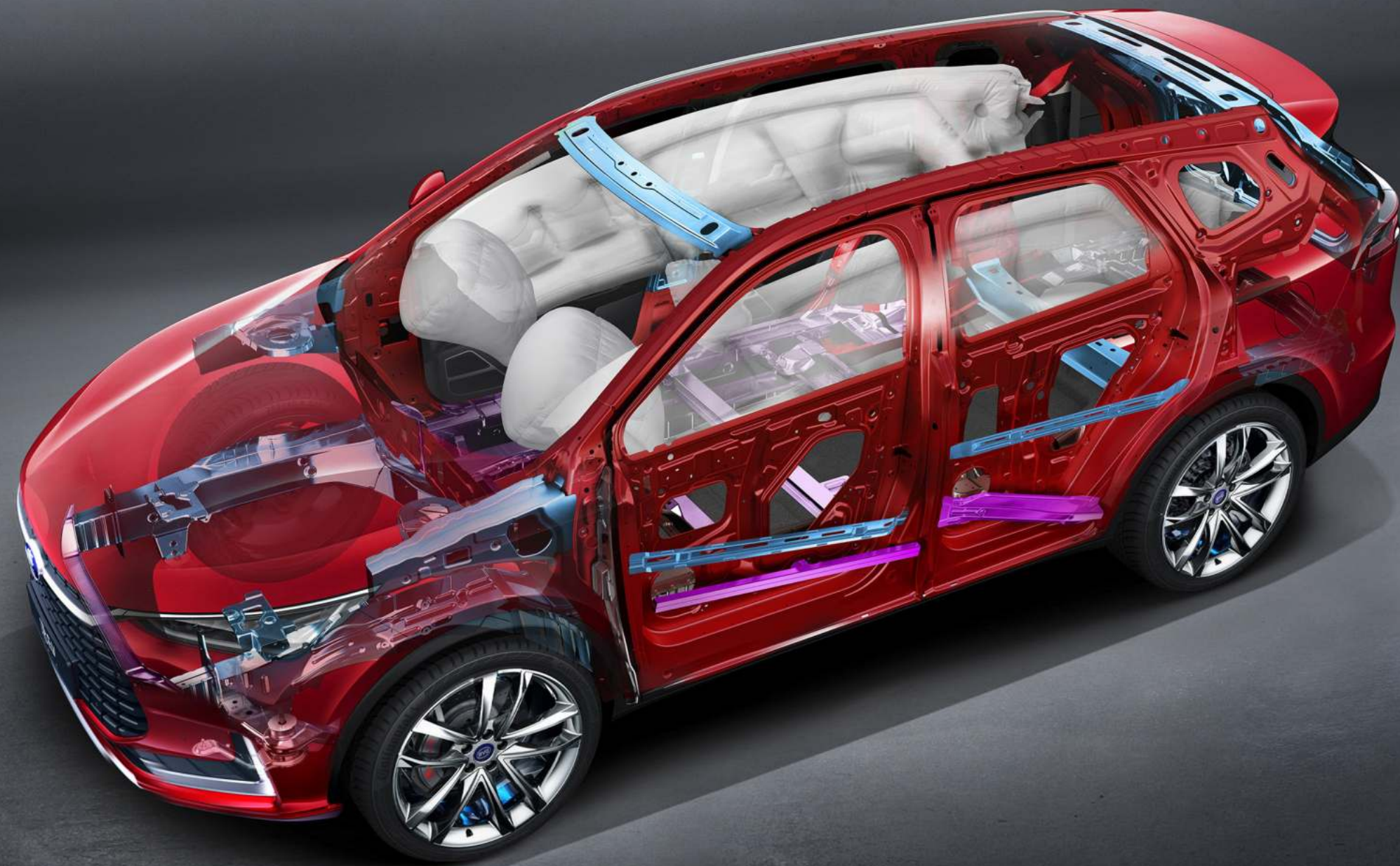
Looking at just one of its four wheels will reveal a compelling story, featuring a cast of superstars. The massive 22" black wheels are wrapped in high performance Continental® (Optional) tires, while Brembo® calipers are prominently displayed through the wheel spokes. Managing the braking is Bosch® IPB system, reducing felt g-forces of braking, while regenerating braking energy at speeds as low as 2km/h.



New Energy “Road Tank”

TANG EV has been built to keep occupants safe. With a full suite of advanced active safety aids, TANG EV uses technology to avoid accidents. The body is constructed using hot formed steel, which is able to withstand more than 10 tons of pressure per square centimeter. The roof can support four times its own weight, increasing occupant safety.

Combining active safety with passive safety, using technology and manufacturing excellence, BYD has pulled out all the stops in making TANG EV the safest new energy SUV on the road.



DiPilot – Intelligent Driver Assistance

The DiPilot system equipped on TANG EV is a redefined L2 autonomous driving system with a full suite of advanced safety features.

- Lane Departure Warning (LDW)
- Lane Change Assist (LCA)
- Predictive Collision Warning (PCW)
- Traffic Sign Recognition (TSR)
- Integrated Cruise Assist (ICA)
- Automatic Emergency Braking (AEB)
- Stop and Go Full Speed Adaptive Cruise Control (ACC)
- Emergency Braking Assistance (EBA)
- Door Open Warning (DOW)
- Bosch® Hydraulic Brake Assist (HBA)
- Rear Crossing Warning (RCW)
- Rear Cross Traffic Alert (RCTA)



Make the
Journey as Memorable
as the Destination

Carry seven people on a trip to remember. With more than 500km
of NEDC range, imagination becomes the only limit.

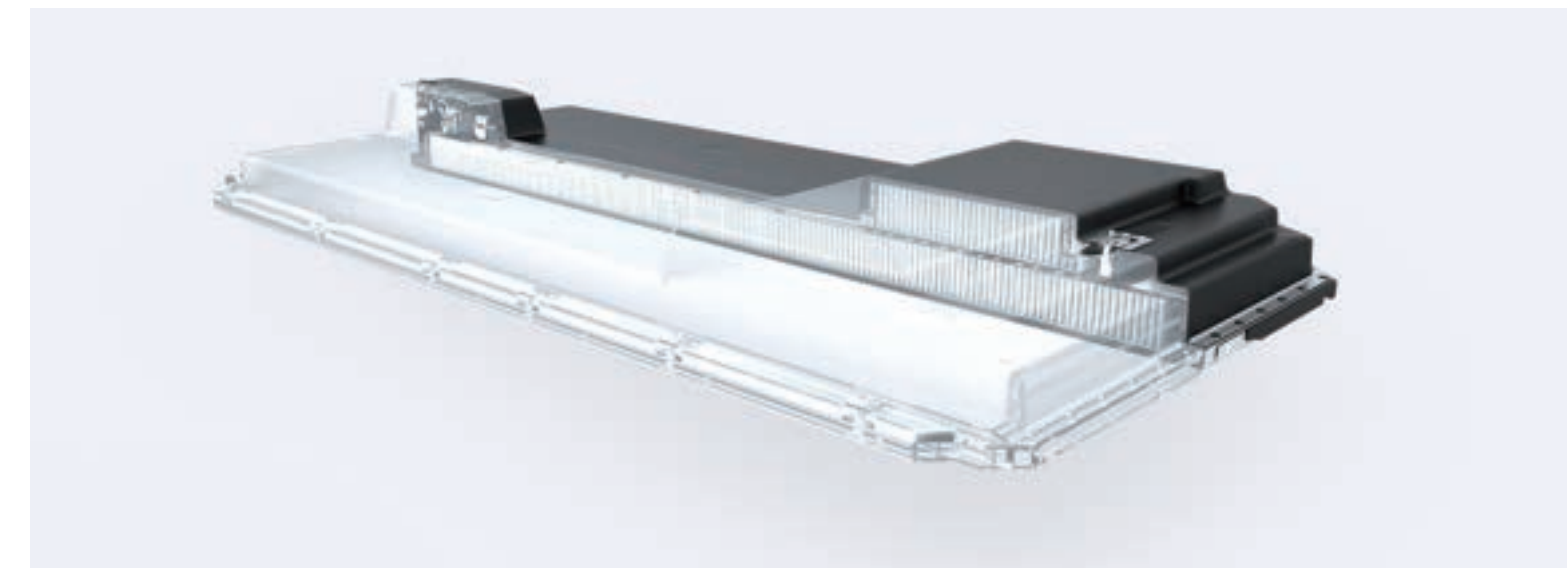




Redefining EV Safety – Blade Battery

The Blade Battery that powers TANG EV is an industry game changer. With the Blade Battery drivers do not have to choose between range and safety, it delivers an abundance of both.

- Highest levels of safety in the industry
- Superb hot and cold weather performance
- 30% to 80% charge in just 30 minutes
- Environmentally friendly, cobalt-free





A Commanding View

With its commanding driving position, TANG EV offers excellent visibility in all situations. Using technology, blind spots can be reduced to zero. A full 360 degree panoramic camera system provides visibility when navigating tight city streets or parking garages, and improves pedestrian safety in dense urban environments.

Ready for Adventure

On urban roads, country roads, or no roads,
nothing stops TANG EV.



Leave a Lasting Impression

Breathtaking presence, elegant styling, and legendary capabilities make TANG EV impossible not to notice.



Premium Standard Features

Interior Features

- 12 speaker Dirac® sound system
- Seven leather seats
- Rotating intelligent touchscreen

Exterior Features

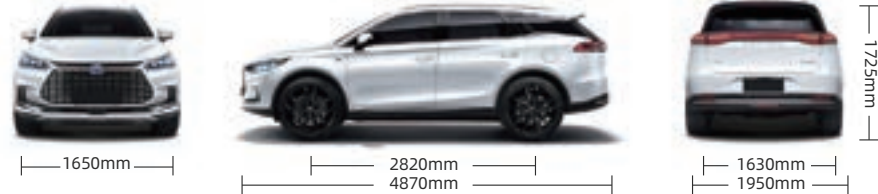
- Full LED light package
- 22" inch aero wheels
- Low drag body

Performance Features

- Blade Battery (505km NEDC range)
- Dual electric motors (517hp)
- 4 wheel drive
- High performance braking system



Dimensions



BYD TANG EV 2021 SPECIFICATIONS

Basic Parameter		
Length (mm)		4870
Width (mm)		1950
Height (mm)		1725
Wheelbase (mm)		2820
Front overhang/Rear overhang (mm)		985/1065
Track (mm) (F/R)		1650/1630
Min. ground clearance (mm) (full-load)		150
Min. turning radius (m)		5.9
Curb weight (kg)		2455 (GB)/2489 (EU)
Gross weight (kg)		3060
Cargo volume (L)		235/940/1655
Passibility (full load)	Approach angle (°)	22
	Departure angle (°)	20
Gradeability		50%
Seats		7
Tire		265/40 R22 255/50 R20
Power & Performance		
Driving mode		Electric AWD
Front motor		TZ200XSN
Rear motor		TZ200XSE
Front transmission		BYDNT33
Rear transmission		BYDNRT33
Front motor	Rated power (kW)	65
	Max. power (kW)	180
	Rated Torque (N·m)	135
	Max. Torque (N·m)	330
	Max. Speed (r/min)	15500 (GB)/15000 (EU)
Rear motor	Rated power (kW)	60 (GB)/65 (EU)
	Max. power (kW)	200
	Rated Torque (N·m)	130
	Max. Torque (N·m)	350
	Max. Speed (r/min)	15500 (GB)/15000 (EU)
Battery	Type	LFP
	Voltage (V)	640
	Battery capacity (kWh)	86.4
	Charging mode	GB (AC 6.6kW+DC 110kW) / EU (CCS-COMBO 2 AC 6.6kW DC 110kW)
	Charging time	30mins (30%-80% in DC charging) 1.3h (0-100% in DC charging) 15h (0-100% in AC charging)
Performance	0~100km/h acceleration time (s)	4.4
	Top speed (km/h)	180
	NEDC range (km)	505 (GB)/400 (EU)
Chassis		
Front Brake		Brembo drilled vented disc
Rear Brake		Drilled vented disc
Front Suspension		McPherson
Rear Suspension		Multi-link

New Energy	GS (GB Charging)	GS (EU Charging)
Timing charging system	●	●
Battery heater	●	●
Battery cooler	●	●
Discharging function (Vehicle to loads), 220V/50Hz	●	—
Discharge connection device	○	—
Portable charger (3 to 7)	●	—
Charging port cover manual control	●	●
Wall-mounted charger (7kW)	○	—
Exterior		
Integral body	●	●
Single-color body	●	●
Rear aluminium alloy subframe	●	●
Panoramic power sunroof	●	●
"BYD" front logo	●	●
"BUILD YOUR DREAMS" rear logo	●	●
"BYD" wheel hub logo	●	●
Chroming exterior door handle	●	●
Hood pneumatic strut	●	●
Front cabin trim panel	●	●
Windows aluminium alloy strim	●	●
Rear side rubbing strip	●	●
Aluminium alloy roof rack	●	●
Antenna with shark fin shape	●	●
Electric trunk door	●	●
Foot-activated power liftgate	●	●
Single-color aluminum alloy wheel	●	●
20 inch Michelin tire	○	○
22 inch Continental tire	●	●
Interior		
Brown interior	●	●
PU Steering wheel	●	●
12.3-inch LCD instrument	●	●
Chamois-decorated instrument	●	●
Roof-mounted glasses case	●	●
Mobile phone wireless charging	●	●
Driver & front passenger sun visor with make-up mirror & lamp	●	●
Sun shade by sunroof	●	●
Knitted fabric ceiling	●	●
Front central armrest box (with two cup holders)	●	●
Second row center armrest (with two cup holders)	●	●
Organ shape acceleration pedal	●	●
220V AC socket	●	—
12V vehicle power interface	●	●
Control		
Intelligent key	●	●
NFC card/key	●	●
Keyless entry	●	●
Electronic power steering	●	●
Electric 4-way adjustable steering column	●	●
Electric Parking Brake (EPB)	●	●
Auto Vehicle Hold (AVH)	●	●
Economic/sport driving mode	●	●
Snowfield mode	●	●
Cooperative Regenerative Braking System (CRBS)	●	●
Safety		
Front airbags	●	●
Front side airbags	●	●
Front and rear integrated side air curtain	●	●
Front seatbelts pretensioners with force limiters	●	●
Second-row side seat belt pretensioners with force limiters	●	●
Rear-row 3 points safety belts	●	●
Front-row seatbelt reminder	●	●
Second-row seatbelt reminder	●	●
Rear-row seatbelt reminder	●	●

Panoramic image	●	●
Interior camera	●	●
Driving Video Recorder	●	●
Blind Spot Detection	●	●
Bosch® Integrated Power Brake	●	●
Comfortable Stop (CST)	●	●
Brake Override System (BOS)	●	●
Hydraulic Brake Assist (HBA)	●	●
Traction Control System (TCS)	●	●
Controlled Deceleration for Parking Brake (CDP)	●	●
Roll Movement Intervention (RMI)	●	●
Vehicle Dynamic Control (VDC)	●	●
Electronic Brakeforce Distribution (EBD)	●	●
Hill Descent Control (HDC)	●	●
Hill-start Hold Control (HHC)	●	●
Brake Disc Wiping (BDW)	●	●
Door Opening Warning (DOW)	●	●
Intelligent Cruise Control (ICC)	●	●
Intelligent Speed Limit Information (ISLI)	●	●
Traffic Sign Recognition (TSR)	●	●
Predictive Collision Warning (PCW)	●	●
Front Collision Warning (FCW)	●	●
Automatic Emergency Braking (AEB)	●	●
Rear Collision Warning (RCW)	●	●
Rear Cross Traffic Alert (RCTA)	●	●
Lane Departure Warning (LDW)	●	●
Lane Keep Assist (LKA)	●	●
Lane Change Assist (LCA)	●	●
Traffic Jam Assist (TJA)	●	●
Adaptive Cruise Control (Stop & Go) (ACC)	●	●
Reverse radar (4F)	●	●
Reverse radar (4R)	●	●
Direct tire pressure monitoring system	●	●
Speed sensor auto door lock	●	●
Child safety lock	●	●
Triangle warning board	●	●
Reflector	●	●
Towing hook	●	●
Tire repair device	●	●
Nut cover removal clip	●	●
Seat		
2+3+2 three row seats	●	●
Leather seats	●	●
Second row 4:6 foldable seats	●	●
8-way power driver seat	●	●
4-way front passenger power seat	●	●
Driver seat heater and ventilator	●	●
Front passenger seat heater and ventilator	●	●
Driver seat memory system	●	●
Driver headrest with 4-way manual adjustment	●	●
Front passenger headrest with 4-way manual adjustment	●	●
Front seats 4-way power lumbar support adjustment	●	●
Front seats with manual cushion length adjustment	●	●
Middle row seat with 2-way manual adjustment	●	●
Second row headrest with manual height adjustment	●	●
Rear row headrest with manual height adjustment	●	●
LATCH child seat fixture (ISO-FIX compatible)	●	●
Multimedia		
Radio	●	●
Electric rotating touchscreen (15.6 inch)	●	●
12 speakers	●	●
Dirac® sound system	●	●
Armrest box USB interface (2)	●	●
Second row USB interface (2)	●	●
Multimedia SD+USB interface	●	●

Light		
DragonBeam LED headlights	●	●
Headlights auto turn-on	●	●
Headlights auto height adjustment	●	●
"Follow me home " headlights with advanced turn-on and off delay	●	●
Intelligent high and low beam light system	●	●
Daytime running lights (LED)	●	●
Rear fog lights	●	●
Consecutive rear combination lights (LED)	●	●
Corner lights	●	●
Front dynamic turn signal	●	●
Rear dynamic turn signal	●	●
High brake lights (LED)	●	●
Charging port lights	●	●
Gradient interior atmosphere lights	●	●
Translucent ambient lights for dashboard panel	●	●
Front indoor lights (LED)	●	●
Rear indoor lights (LED)	●	●
Middle indoor lights (LED)	●	●
Door lights (LED)	●	●
Driver seat footlights	●	●
Front passenger seat footlights	●	●
Glove box lights (LED)	●	●
Trunk lights (LED)	●	●
Glass/mirror		
Rain-sensing windshield wipers	●	●
Rear wiper	●	●
Infrared-reflecting and acoustic windshield and rear window	●	●
Rear window defogger	●	●
Rear window with privacy glass	●	●
Infrared-reflecting and acoustic front side windows	●	●
Rear side windows with privacy glass	●	●
Four door windows with one press up/down and jam protection	●	●
Double curvature side view mirror	●	●
Side view mirror auto adjustment	●	●
Side view mirror electric folding	●	●
Side view mirror heating and defrosting	●	●
Side view mirror reverse auto turning	●	●
Memory side view mirror	●	●
Auto anti-glare rearview mirror	●	●
Air conditioner		
Auto air conditioning	●	●
Dual-zone automatic climate control AC	—	●
3-zone automatic climate control AC	●	—
Rear independent auto AC	●	—
Middle row roof air outlet	●	—
Middle row air outlet	—	●
High-efficiency PM2.5 filter	●	●
Air purification system (PM2.5)	●	●
Anion generator	●	●

Note: "—" means "not available", "●" means "available", "○" means "optional".

NOTICE
 Specs updated: Aug.2021
 1. Actual range will vary depending upon driving/charging habits, speed, conditions, weather, temperature, and battery age. The battery capacity is initial capacity. It will decrease with time and use. The battery age and outside ambient temperature both play a role in charging times.
 2. The above specifications are for the standard vehicle, they are subject to regional needs and regulations. Some options might not be available in your country or region. All technical specifications are subject to change without notice. Visit BYD dealer for more details.
 3. BYD reminds you to wear seat belts, secure children in the rear seat, obey all traffic laws and drive responsibly.



The Power to Make Life Better

BYD Information Service Center
+86 755 89888888
www.byd.com

© BYD AUTO CO., LTD 2021.
September 1st, 2021.

 facebook.com/bydcompany

 twitter.com/bydcompany

 youtube.com/bydcompany