

MAZDA2



STYLE THAT SETS YOU APART

Inspired by the Evolved Kodo: Soul of Motion design theme, the Mazda2 radiates style, confidence, and quality from every angle. The new front grille and signature wing creates a refined sense of elegance.





NEW FRONT BUMPER DESIGN



NEW 16-INCH WHEEL DESIGN



NEW LED HEADLAMP DESIGN

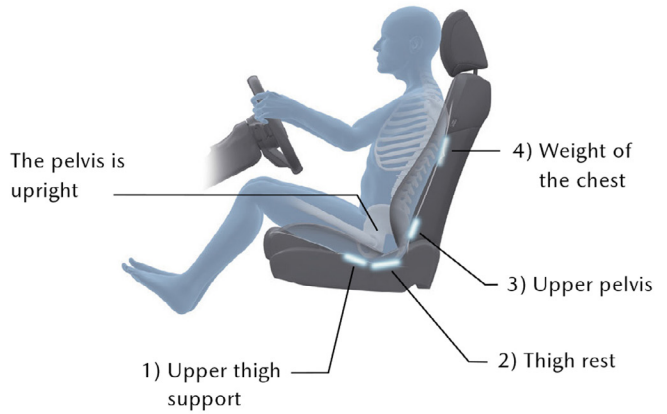
AN INVITING CABIN AWAITS YOU

Designed to create a beautiful and inviting driving experience, the Mazda2 features new materials, and a brown and black motif to lend an air of maturity to its fun and stylish interiors.



SEAT THAT SUPPORTS POSTURE

Experience a more relaxed drive with enhanced seat designs. An optimized spring rate for cushion and seatback, a supporter, and spacer help you maintain a natural S-shaped spine curve.



IMPROVED NVH

Enjoy a quieter and smoother drive with the new Mazda2.

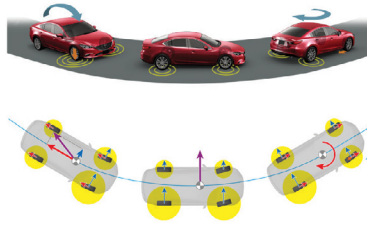
A CONVENIENT AND CONNECTED DRIVE

Passengers can control their mobile phones' popular navigation and music applications through the Mazda Connect infotainment system. By integrating Smartphone Mirroring, a safer, more convenient, and connected drive is realized.



**G-VECTERING CONTROL PLUS
(GVC PLUS)**

Every drive is engaging and intuitive, thanks to GVC Plus.



**1.5L SKYACTIV-G
GASOLINE ENGINE**

Mechanical improvements make it a livelier and more fuel-efficient engine.

110 PS @ 6,000 rpm

141 Nm @ 4,000 rpm



LEVEL UP YOUR EVERYDAY DRIVE

Easy and fun to drive, stylish and practical to own, the Mazda2 is the ideal ride for a quick sprint around town or a long drive to your next adventure.

- Dual Front Airbags
- Anti-Lock Braking System with Electronic Brakeforce Distribution
- Dynamic Stability Control
- Smart Keyless Entry System
- Rear Parking Sensor
- Rearview Camera





5 YEARS FREE SERVICE PLAN

Worry-free ownership is the hallmark of the Mazda driving experience. We believe that ease of ownership is key to a long and lasting relationship with your Mazda.

That is why every brand-new Mazda vehicle includes FREE parts and labor for every scheduled Preventive Maintenance Service for five years, or up to 100,000km odometer distance, whichever comes first. If you happen to need assistance, you may avail of emergency towing and minor roadside repair support*, which comes with your brand-new Mazda. These unique benefits further enhance your Mazda's three-year, or 100,000km, New Vehicle Limited Warranty, Bumper-to-Bumper coverage.**

With over 19 full-service dealerships across the country ready to attend to your vehicle's needs, you can celebrate the joy and freedom of driving that only a Mazda can deliver.

Owning a Mazda is more than just driving with confidence and reassurance. A hassle-free ownership experience is the fulfillment of Mazda's promise to be your reliable partner in life's amazing journeys.



#1 in 2016 and 2019 according to the J.D. Power Philippines Customer Service Index (CSI) StudySM

For J.D. Power 2019 award information, visit jdpower.com/awards

*subject to third-party charges

** For the full list of the warranty coverage, please see your Mazda Service Warranty Booklet.

SPECIFICATIONS

MAZDA2	1.5L AT SEDAN ELITE	1.5L AT HATCHBACK ELITE
Body Style	Sedan	Hatchback
Engine	SKYACTIV-G 1.5L	SKYACTIV-G 1.5L
Transmission	SKYACTIV-DRIVE 6-Speed Automatic with Sport Mode	SKYACTIV-DRIVE 6-Speed Automatic with Sport Mode
G-Vectoring Control Plus	Equipped	Equipped
DIMENSIONS AND WEIGHTS		
Overall Length	4,340mm	4,060mm
Overall Width	1,695mm	1,695mm
Overall Height	1,485mm	1,515mm
Wheelbase (Front/Rear)	1,495mm / 1,485mm	1,495mm / 1,485mm
Minimum Turning Radius	4.7m	4.7m
Minimum Curb Weight	1,068kg	1,042kg
ENGINE		
Type	SKYACTIV-G In-line 4-Cylinder DOHC, 16 Valves	SKYACTIV-G In-line 4-Cylinder DOHC, 16 Valves
Displacement	1,496 cc	1,496 cc
Compression Ratio	12:1	12:1
Fuel System	Direct Injection	Direct Injection
Recommended Fuel	91 RON Gasoline	91 RON Gasoline
Maximum Output (PS/rpm)	110 @ 6,000	110 @ 6,000
Maximum Torque (Nm/rpm)	141 @ 4,000	141 @ 4,000
Fuel Tank Capacity	44 liters	44 liters
STEERING		
Type	Rack and Pinion	Rack and Pinion
Power Steering Type	Electric Power-Assisted Steering	Electric Power-Assisted Steering
Steering Wheels Controls	Leather Wrapped Audio & Bluetooth Equipped	Leather Wrapped Audio & Bluetooth Equipped
Material Control Switch Paddle Shifters	Equipped	Equipped
Tilt & Telescopic	Equipped	Equipped
SUSPENSION		
Type	MacPherson Strut	MacPherson Strut
Front	Torsion Beam Axle	Torsion Beam Axle
Rear		
BRAKES		
Type	Ventilated Discs	Ventilated Discs
Front	Solid Discs	Solid Discs
Rear		
Parking Brake (EPB)	Manual Handbrake	Manual Handbrake
EXTERIOR		
Headlamps	LED with Auto Levelling LED	LED with Auto Levelling Bulb
Type Running Lamp		
Wheels	16" Alloy Wheels Gray Metallic	16" Alloy Wheels Gray Metallic
Type Color		
Tires	185/60 R16	185/60 R16
Wipers	Intermittent	Intermittent
Side Mirrors	Power Adjust with Power Fold	Power Adjust with Power Fold
INTERIOR		
Seat & Trim Upholstery	Fabric Black with Brown Accents	Fabric Black with Brown Accents
Material Color Front		
Driver Passenger	6-way Manual Adjust 4-way Manual Adjust	6-way Manual Adjust 4-way Manual Adjust

MAZDA2

1.5L AT SEDAN ELITE

1.5L AT HATCHBACK ELITE

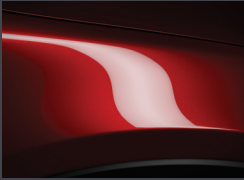
INTERIOR

Shift Knob	Leather Wrapped	Leather Wrapped
Audio System	Mazda Connect USB, Bluetooth & Smartphone Mirroring 6-Pc Speakers	Mazda Connect USB, Bluetooth & Smartphone Mirroring 6-Pc Speakers
Meter Set	Analog Speedometer with Digital Tachometer	Analog Speedometer with Digital Tachometer
Bluetooth*Hands-Free System	Equipped	Equipped
Climate Control (Front)	Single-Zone Automatic Climate Control	Single-Zone Automatic Climate Control
Rear View Mirror	Manual Day & Night	Manual Day & Night
Power Windows	One-Touch Up/Down (Driver)	One-Touch Up/Down (Driver)

SAFETY AND SECURITY

Airbags	Dual Front Airbags	Dual Front Airbags
Braking System	Anti-Locking Braking (ABS) with Electronic Brakeforce Distribution (EBD)	Anti-Locking Braking (ABS) with Electronic Brakeforce Distribution (EBD)
Dynamic Stability Control (DSC)	Equipped	Equipped
Smart Keyless Entry System	Equipped with Push Start Button	Equipped with Push Start Button
ISOFIX	Equipped	Equipped
Parking Sensors	Rear Parking Sensor	Rear Parking Sensor
Camera	Rearview Camera	Rearview Camera

AVAILABLE COLORS



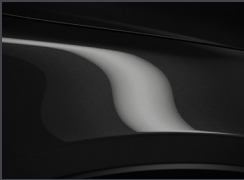
Soul Red Crystal



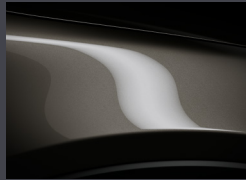
Polymetal Gray*



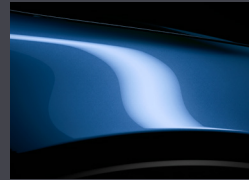
Snowflake White Pearl



Jet Black



Titanium Flash



Eternal Blue

* Available only for the hatchback

Mazda Philippines reserves the right to change or modify equipment specifications at any time without prior notice. Details, colors, specifications are for information only.

© Mazda Motor Corporation