

07 **mazda3**



zoom-zoom



It all comes back to you.

And what you need your new sport compact to do and be: A looker. A performer. A hauler. An entertainer. A lasting value. But, above all else, a keeper. In short, you need a car with the kind of surprising style and substance, standard features and value, coolness and performance that inspired Edmunds.com to tell its readers: "The MAZDA3 doesn't look, feel or drive like an economy sedan. Go buy one." So start with a test drive. Or maybe three. Especially now that there are three distinctly different models to choose from. And see how incredibly well a new MAZDA3 syncs up with all your wants and needs. As well as your desire for something wickedly exhilarating. After all, at Mazda, we're always rethinking what's possible. And if you stop and think about it, you'll see we really think a lot alike.

Some popularity contests
are more one-sided than others.

"America's Best Economy Car two years in a row."
– by the readers of *AutoWeek* 7/5/04, 7/4/05

"Its level of refinement is far beyond that of the
others. Drive it and you'd swear you were in a car
from a different class, a higher class. Drive it and
you smile." – *Edmunds' Inside Line*

"Bottom Line: More performance, utility
and style than any car in the segment."
– *Edmunds' Inside Line*





It's all about hooking up with
instant gratification—this instant.

The car you've been waiting for is waiting for you. And it's the same car that has the experts at Edmunds' *Inside Line* raving: "...MAZDA3 does everything—and we mean everything—better than its competition. In fact, its acceleration, handling, build quality, feature content, interior design and styling are on par with cars that cost significantly more." Want something that runs circles around all those bland, uninspiring econoboxes? Then check out a new MAZDA3s 4-Door Sedan or 5-Door. And land yourself a new set of wheels that's more stylish. More eye-catching. More versatile. And way beyond basic transportation. In a MAZDA3s, you'll find yourself surrounded by a sleek, strikingly athletic shape. Moved by the spirited response of an advanced 156-hp* engine with variable valve timing. And spoiled by a well-appointed interior. A new MAZDA3 puts pure exhilaration, instant gratification and unexpected value all within easy reach. Need a second opinion? According to *Motor Trend* (9/06): "This car looks, feels, and drives more expensive than it really is."

* 151 hp in CA, MA, ME, NY and VT.



It's all about pushing all the right buttons.

Get behind the wheel of a MAZDA3s, and you'll feel an almost intuitive connection. To the car. To the road. And to an outrageously satisfying array of standard features. Like the firm hug of a well-bolstered driver's seat with height and lumbar support adjustments. The just-right feeling of a leather-wrapped shifter and tilt/telescopic steering wheel. The added comfort of an A/C system with an integral pollen filter. The ambient temperature display. All that, *plus* the extra kick from a 6-speaker AM/FM/CD stereo that's SIRIUS Satellite Radio compatible.* Want more proof of Mazda's obsession with quality, craftsmanship and attention to detail? Check out the auxiliary input jack for your Apple® iPod®. The cool blue glow of electroluminescent gauges. The illuminated steering-wheel-mounted controls for the AM/FM/CD stereo and cruise control. The power windows, mirrors and door locks. Not to mention the rich fabrics and textures. And the exacting fit and finish. On Grand Touring models, automatic climate control, leather-trimmed seating and heated front seats are standard. Also available are a Bose® 222-watt audio system (standard on MAZDASPEED3 Grand Touring) and a DVD-based navigation system. It's the kind of advanced cockpit that gets inside your head. And dares you to explore the possibilities.

SIRIUS
SATELLITE RADIO reception requires a subscription and Mazda satellite radio receiver accessory kit. Available only in the U.S., except Alaska and Hawaii.
Apple and iPod are registered trademarks of Apple Computer, Inc. iPod not included.





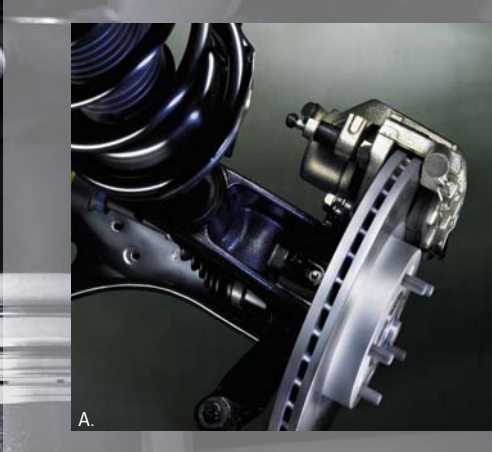
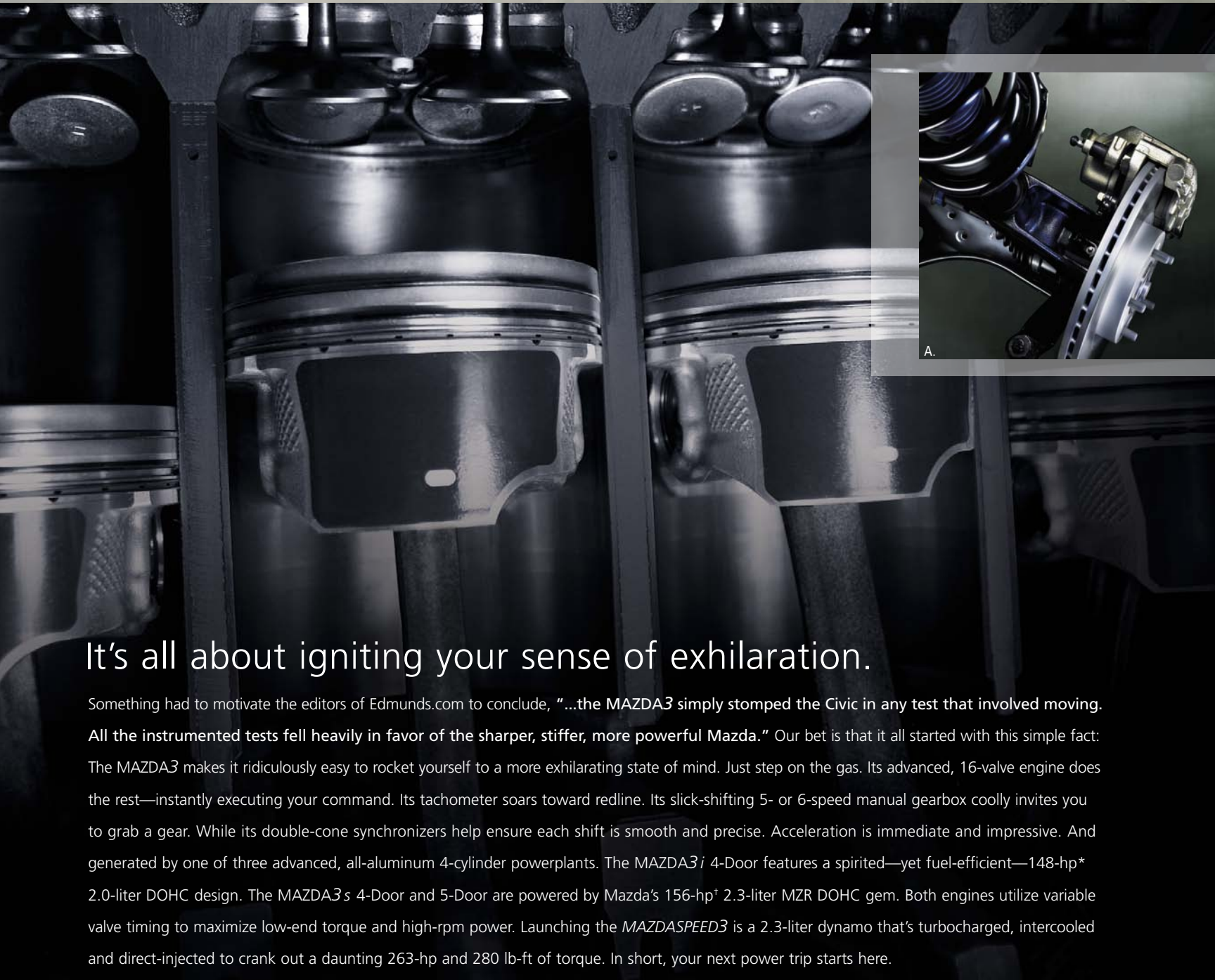
"A sleek yet functional design blends with high-quality materials and ample passenger room to give this new Mazda an upscale look and feel that few cars in this class can match." —Edmunds.com



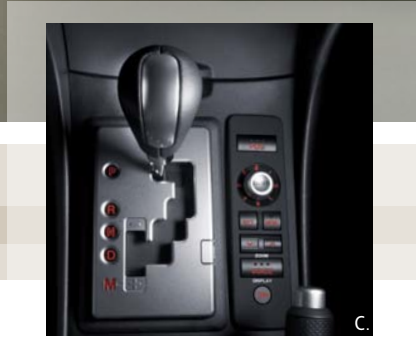
It's all about a car clearly in sync with your lifestyle.

The MAZDA3 s 5-Door has few equals. Especially when it comes to bold, fresh thinking. And standard features that fit your priorities and multitasking lifestyle. So, you'll find a handy 12-volt power outlet built in to the center console—perfect for your cell phone and other mobile-office must-haves. Plus a flexible 60/40 split fold-down rear seatback to make the most of its versatile 5-door design. And to make hauling larger, longer cargo virtually hassle-free—even with a rear-seat passenger. There's also a rear-area cargo management system* to organize and protect everything from your laptop and luggage to your sports gear. Outside, even more great ideas—all standard—literally reflect your excellent taste. Like stunning, 17-inch alloy wheels. Aggressive side sill extensions. A slick rear liftgate spoiler. Even fog lights. Cooler still are all the available ways to make your MAZDA3 s 5-Door more fun, more entertaining and more your own. Add an in-dash 6-disc CD changer along with a moonroof. Go for leather-trimmed seats (available on Touring, standard on Grand Touring). On the Grand Touring, you even get heated front seats and automatic rain-sensing windshield wipers. The advantages of a MAZDA3 5-Door, in fact, couldn't be clearer.

* Please remember to properly secure all cargo. Not included on MAZDASPEED3.



A. The 4-wheel independent suspension found on every MAZDA3, including MacPherson struts in front and an advanced, multilink design in the rear, results in agile handling and impressive ride comfort. B. All MAZDA3 models utilize power-assisted 4-wheel disc brakes to promote consistently linear, fade-resistant stopping power. An advanced Anti-lock Brake System (ABS) is also standard (except on MAZDA3*i* models, where it is an option). The system incorporates both Electronic Brakeforce Distribution (EBD) to more precisely apply braking power under all driving conditions plus Brake Assist to help maximize stopping power in emergency situations. C. Mazda's Sport AT automatic transmission is available on all models except the MAZDASPEED3. It delivers the convenience of an automatic plus the fun of a manual shift mode (s models feature a 5-speed, i models feature a 4-speed).



It's all about igniting your sense of exhilaration.

Something had to motivate the editors of Edmunds.com to conclude, "...the MAZDA3 simply stomped the Civic in any test that involved moving. All the instrumented tests fell heavily in favor of the sharper, stiffer, more powerful Mazda." Our bet is that it all started with this simple fact: The MAZDA3 makes it ridiculously easy to rocket yourself to a more exhilarating state of mind. Just step on the gas. Its advanced, 16-valve engine does the rest—instantly executing your command. Its tachometer soars toward redline. Its slick-shifting 5- or 6-speed manual gearbox coolly invites you to grab a gear. While its double-cone synchronizers help ensure each shift is smooth and precise. Acceleration is immediate and impressive. And generated by one of three advanced, all-aluminum 4-cylinder powerplants. The MAZDA3*i* 4-Door features a spirited—yet fuel-efficient—148-hp* 2.0-liter DOHC design. The MAZDA3*s* 4-Door and 5-Door are powered by Mazda's 156-hp† 2.3-liter MZR DOHC gem. Both engines utilize variable valve timing to maximize low-end torque and high-rpm power. Launching the MAZDASPEED3 is a 2.3-liter dynamo that's turbocharged, intercooled and direct-injected to crank out a daunting 263-hp and 280 lb-ft of torque. In short, your next power trip starts here.

* 144 hp in CA, MA, ME, NY and VT. † 151 hp in CA, MA, ME, NY and VT.

It's all about
getting there ahead of the crowd.



It's all about award-winning design and traffic-stopping value.

There's a carload of reasons why MAZDA3 was voted "America's Best Economy Car" two years in a row by the car-obsessed readers of *AutoWeek* (7-4-05 and 7-5-04). Even in its most affordable form, the MAZDA3*i* 4-Door delivers an impressive matrix of safety engineering and eye-catching value. Standard features, in fact, are as numerous as they are insightful. Including a tilt and telescopic steering wheel with audio controls. A 4-speaker AM/FM/CD stereo. An auxiliary input jack for your Apple® iPod®. A center console with armrest and dual storage compartments. Even a

versatile 60/40 split fold-down rear seatback. Plus seating for five. Refined exterior styling touches include body-colored mirrors, side moldings and door handles. You'll also appreciate the dynamic, yet fuel-efficient, powertrain. The MAZDA3*i* 4-Door's 148-hp* 2.0-liter engine and 5-speed manual gearbox deliver a frugal 28 mpg city/35 mpg highway.† It's a street-savvy way to make sure your paychecks and fill-ups both go farther.

* 144 hp in CA, MA, ME, NY and VT. † EPA estimated fuel economy. Actual results may vary. Apple and iPod are registered trademarks of Apple Computer, Inc.



Every MAZDA3 surrounds its occupants with a tour de force of safety engineering. Advanced dual front air bags‡ that utilize inflators with crash-zone, driver's seat-position and passenger-weight sensors; a collapsible steering column; a whiplash-reducing front-seat headrest design; and front safety-belt pretensioners with force limiters are all standard. Dual front side-impact air bags and side air curtains† with coverage for front and rear passengers are standard on MAZDA3*s* Touring, Grand Touring and MAZDASPEED3 models and available on all other models except the MAZDA3*s* 5-Door Sport.

‡ Always wear your safety belt and secure children in the rear seat.



Mazda's "Triple H" construction strengthens critical body areas with additional steel reinforcements to enhance impact protection, structural integrity and overall handling. All four doors incorporate side-impact door beams to help absorb energy and promote cabin integrity in the case of a collision. Additionally, extensive front and rear crumple zones also help to absorb energy and better protect all MAZDA3 occupants in the case of a collision.

MAZDASPEED3

It's all about ripping the road a new pothole.



Powering the MAZDASPEED3 is a 263-hp turbocharged and intercooled 2.3-liter MZR engine. One that also utilizes direct-injection technology to improve combustion, boost torque and optimize fuel efficiency. Other high-output-promoting enhancements to this all-aluminum powerplant include a high-strength forged crankshaft and connecting rods plus tuned intake and exhaust systems. All of which help the MAZDASPEED3 generate a remarkable 68% more horsepower, 280 lb-ft of torque, a blistering "0 to 60 mph time of 5.8 seconds" and an electronically limited top speed of 155 mph.



The experts at *Motor Trend* (10/06) simply put it this way: "...if you're the type who appreciates a pocket-rocket that can make your spine tingle, get on the phone immediately." Fact is, the all-new MAZDASPEED3* is an adrenaline fix like no other. A high-output performer without the high-output price. Yet one that boasts: A high-performance 2.3-liter MZR engine that's turbocharged, intercooled and direct-injected. A whopping 263 hp and 280 lb-ft of torque. A "zero to 60 mph time of 5.8 seconds."† Plus an electronically limited top speed of 155 mph. All the better to help you tame your favorite stretch of asphalt. But then, we started with one of the best-handling sport compacts on the planet—the MAZDA3 5-Door—and made it even better. With a close-ratio 6-speed manual gearbox and Tochigi-Fuji Super limited-slip differential to help you expertly manage all that power. Drilled aluminum pedals. High-bolstered front bucket seats to keep you better anchored in the turns. Four-wheel disc brakes with ABS, Electronic Brakeforce Distribution and Brake Assist to give you exceptional stopping power. A track-tuned independent suspension to reduce body roll 60% and keep things more firmly in touch with the road. An underbody air management system to reduce lift at high speed. Not to mention Dynamic Stability Control with Traction Control. Topping it all off: Trick 18-inch alloys. Aero body parts—front, sides and rear. And a tuned intake and exhaust. Plus Mazda's full, new-car factory warranty. The potent end result compelled *Motor Trend* (10/06) to conclude that the MAZDASPEED3 "...gives the term 'bang for the buck' an inferiority complex."

It all comes back to **zoom-zoom**



On any given weekend, there are more Mazdas competing on the roadrace tracks of America than any other brand of vehicle.* Import or domestic. And for good reason. Racing is in our blood. Our passion for motorsports spans decades. And our competitive spirit drives us to expand into demanding, new racing venues. Case in point, a rally-prepared MAZDA3 is currently making its presence felt in Rally America National Championship-sanctioned events from coast to coast. Given its strong chassis, stiff unibody and stellar MZR engine, the MAZDA3 is proving itself to be an extremely competitive rally car. And in the ultra-intense arena of open-wheel racing, specially prepared 300-hp versions of the MAZDA3's remarkable 2.3-liter MZR engine now power all the race cars competing in the Champ Car Atlantic Championship series. Mazda's 2.3-liter MZR powerplant was chosen for its inherent strength, superb engineering and performance potential. Capable of rocketing these high-tech formula cars up to 175 mph, it's the most powerful engine ever used in the Atlantic Championship's 33-year history—shattering records at every track. But then, Mazda has always been about competing. Improving. Refining. And, of course, Zoom-Zoom.

* Based on Sports Car Club of America racing data.



MAZDA3 SPECIFICATIONS

SPECIFICATIONS	MAZDA3 i 4-Door		MAZDA3 s 4-Door/5-Door	
	Engine size and type	2.0L DOHC 16-valve 4-cylinder with variable valve timing		2.3L DOHC 16-valve 4-cylinder with variable valve timing
Horsepower	148* @ 6500 rpm		156* @ 6500 rpm	
Torque, lb-ft	135* @ 4500 rpm		150* @ 4500 rpm	
EPA ESTIMATED FUEL ECONOMY				
City/highway	Manual	28/35	Manual	26/33
	Automatic	26/34	Automatic	25/31
CURB WEIGHT				
	Manual	2780 lb	Manual	2906 lb/2930 lb
	CA, MA, ME, NY & VT	2795 lb	CA, MA, ME, NY & VT	2921 lb/2945 lb
	Automatic	2811 lb	Automatic	2959 lb/2983 lb
	CA, MA, ME, NY & VT	2828 lb	CA, MA, ME, NY & VT	2974 lb/2998 lb
EXTERIOR DIMENSIONS	MAZDA3 i 4-Door	MAZDA3 s 4-Door	MAZDA3 s 5-Door	
Wheelbase/overall length (in)	103.9/177.4	103.9/177.6	103.9/176.8	
Overall width (in)	69.1	69.1	69.1	
Overall height (in)	57.7	57.7	57.7	
Track, front/rear (in)	60.2/59.6	60.2/59.6	60.2/59.6	
INTERIOR DIMENSIONS				
Headroom, front/rear (in)	39.1/37.4	39.1/37.4	39.1/38.4	
Headroom, front/rear with moonroof (in)	38.1/37.0	38.1/37.0	38.2/38.3	
Legroom, front/rear (in)	41.1/36.3	41.1/36.3	41.1/36.3	
Shoulder room front/rear (in)	54.9/54.0	54.9/54.0	54.9/54.0	
CAPACITIES				
EPA passenger volume (cu ft)	94.3	94.3	95.3	
EPA cargo volume (cu ft)	11.5	11.5	17.1	
EPA cargo volume, rear seats folded (cu ft)	—	—	43.8	
Fuel capacity (U.S. gallons)	14.5	14.5	14.5	

MAZDA3 MECHANICAL FEATURES

MECHANICAL FEATURES	MAZDA3 i 4-Door	MAZDA3 s 4-Door	MAZDA3 s 5-Door
2.0L DOHC 16-valve 4-cylinder engine with 148 hp*	S	—	—
2.3L DOHC 16-valve 4-cylinder engine with 156 hp*	—	S	S
5-speed manual overdrive transmission	S	S	S
4-speed sport AT automatic transmission	(available)	—	—
5-speed sport AT automatic transmission	—	(available)	(available)
Rack-and-pinion steering with electrohydraulic variable assist	S	S	S
Power-assisted 4-wheel disc brakes	S	S	S
Anti-lock Brake System (ABS) with Electronic Brakeforce Distribution (EBD) and Brake Assist	P	S	S
Independent strut-type front suspension	S	S	S
Independent multilink rear suspension	S	S	S
Front and rear stabilizer bars	S	S	S

S: Standard O: Optional P: Package T: Touring model GT: Grand Touring model A: Dealer-available accessory
—: Not available

* 2.0L: 144 hp, 132 lb-ft / 2.3L: 151 hp, 149 lb-ft in CA, MA, ME, NY and VT.

† Always wear your safety belt and secure children in the rear seat.

MazdaUSA.com

Wherever you see this symbol, you can get the whole story on our interactive Web site.

MAZDA3 EQUIPMENT AND FEATURES

EXTERIOR FEATURES	MAZDA3 i 4-Door	MAZDA3 s 4-Door	MAZDA3 s 5-Door
15-inch steel wheels with full wheel covers	S	—	—
16-inch alloy wheels	T	S	—
17-inch alloy wheels	—	T/GT	S
195/65R15 H-rated steel-belted all-season radial tires	S	—	—
205/55R16 H-rated steel-belted all-season radial tires	T	S	—
205/50R17 V-rated steel-belted all-season radial tires	—	T/GT	S
Front grille, black	S	—	—
Front grille, body color	—	S	S
5-mph body-color bumpers	S	—	—
5-mph body-color bumpers—sport type	—	S	S
Side sill extensions	—	T/GT/O/A	S
Body-color side moldings and door handles	S	S	S
Dual body-color remote outside mirrors	S	—	—
Dual body-color power remote outside mirrors	T	S	S
Intermittent windshield wipers	S	S	S
Rain-sensing front windshield wipers	—	GT	GT
Rear wiper/washer with intermittent setting	—	—	S
Clear-lens halogen headlights with dark housings	S	S	S
Xenon High-Intensity-Discharge (HID) low-beam headlights	—	GT	GT
Clear-lens halogen fog lights	O/A	S	S
Clear-lens taillights with dark housings	S	S	S
LED clear-lens taillights	—	GT	GT
Fender-mounted turn-signal repeater lights	S	S	S
Roof-mounted mast-type radio antenna	S	S	S
Rear liftgate spoiler	—	—	S
INTERIOR FEATURES			
Advanced front air bags [†] with belt-use, passenger-weight and driver's seat-position sensors	S	S	S
Front safety-belt pretensioners with force limiters	S	S	S
3-point safety belts for all 5 seating positions	S	S	S
Tire-Pressure Monitoring System (TPMS)	T	S	S
Reclining front bucket seats	S	S	S
Driver's seat lifter and adjustable lumbar support	T	S	S
60/40 split fold-down rear seatback	S	S	S
Rear center armrest with cup holders	S	S	S
Removable rigid cargo cover	—	—	S
Cargo management system	—	—	S
Full cloth upholstery and carpet floor mats	S	S	S
Center console armrest with dual covered storage compartments and 12V power point	S	S	S
Dual front cup holders with cover	S	S	S
Power windows with driver's one-touch-down feature	T	S	S
Power door locks with 2-stage unlocking	T	S	S
Remote keyless illuminated entry system with Electronic Lockout Protection (ELP) and panic button feature	T	S	S
Rear child-safety door locks and LATCH child-safety-seat anchors	S	S	S
Remote trunk-lid release	S	S	—
Remote fuel-filler door release	S	S	S

Product Changes and Options Availability: Following publication of this brochure, certain changes in standard equipment, options, prices and the like, or product delays may have occurred which would not be included in these pages. Your Mazda dealer is your best source for up-to-date information. Mazda reserves the right to change product specifications at any time without incurring obligations. Options shown or described in this brochure are available at extra cost and may be offered only in combination with other options or subject to additional ordering requirements or limitations.

MAZDA3 EQUIPMENT AND FEATURES

INTERIOR FEATURES	MAZDA3 i 4-Door	MAZDA3 s 4-Door	MAZDA3 s 5-Door
Dual front map lights; cargo area light; ignition-keyhole light	S	S	S
Driver's and passenger's covered visor vanity mirrors	S	S	S
White-on-black gauges with red nighttime illumination	S	—	—
Electroluminescent gauges with tri-mode lighting: blue (entry); white-on-black (daytime); red-on-black (nighttime)	—	S	S
Center instrument panel display (audio & clock)	S	S	S
Tilt/telescopic steering wheel	S	S	S
Leather-wrapped steering wheel and shift knob	—	S	S
Cruise control with steering-wheel-mounted controls	T	S	S

MAZDA3 MODELS

MAZDA3 i 4-Door Touring

In addition to MAZDA3 i Sport:

- 16-inch alloy wheels with P205/55R16 tires
- Dual body-color power remote outside mirrors
- Cruise control with steering-wheel-mounted controls
- Remote keyless entry with Electronic Lockout Protection (ELP); panic button feature
- Driver's seat lifter and adjustable lumbar support
- Power windows with driver's one-touch-down feature
- Power door locks with 2-stage unlocking
- CFC-free air conditioning (includes outside ambient temp for center instrument panel and pollen filter)
- 6-speaker sound system
- Tire-Pressure Monitoring System (TPMS)

MAZDA3 s 4-Door Touring

In addition to MAZDA3 s Sport:

- 17-inch alloy wheels with P205R17 tires
- Side sill extensions
- Front side-impact air bags[†]
- Side-impact air curtains[†]
- Dynamic Stability Control (DSC)
- Traction Control System (TCS)

MAZDA3 s 5-Door Touring

Includes the following features:

- Front side-impact air bags[†]
- Side-impact air curtains[†]
- Dynamic Stability Control (DSC)
- Traction Control System (TCS)

MAZDA3 EQUIPMENT AND FEATURES

INTERIOR FEATURES	MAZDA3 i 4-Door	MAZDA3 s 4-Door	MAZDA3 s 5-Door
Heater/defroster with 4-speed blower and rear heater ducts	S	S	S
Rear window defogger; front side-window demisters	S	S	S
CFC-free air conditioning (includes outside ambient temp for center instrument panel and pollen filter)	O/T	S	S
AM/FM/CD stereo with 4 speakers and automatic level control	S	—	—
AM/FM/CD stereo with 6 speakers and automatic level control	T	S	S
Steering-wheel-mounted audio controls	S	S	S
Auxiliary-audio input jack	S	S	S
Engine-immobilizer antitheft system	S	S	S

MAZDA3 s 4-Door Grand Touring

Includes the following features in addition to or in place of MAZDA3 s 4-Door Touring:

- Rain-sensing front windshield wipers
- Xenon High-Intensity-Discharge (HID) low-beam headlights
- Automatic on/off headlights
- LED clear-lens taillights
- Automatic climate control
- Black-leather-trimmed seats
- Heated front seats
- Driving information system (trip computer)
- Antitheft security system

MAZDA3 s 5-Door Grand Touring

Includes the following features in addition to or in place of MAZDA3 s 5-Door Touring:

- Rain-sensing front windshield wipers
- Xenon High-Intensity-Discharge (HID) low-beam headlights
- Automatic on/off headlights
- LED clear-lens taillights
- Automatic climate control
- Black-leather-trimmed seats
- Heated front seats
- Driving information system (trip computer)
- Antitheft security system

MAZDA3 OPTIONS AND OPTION PACKAGES

OPTIONS AND OPTION PACKAGES	MAZDA3 i 4-Door Sport	MAZDA3 i 4-Door Touring	MAZDA3 s 4- & 5-Door Sport	MAZDA3 s 4- & 5-Door Touring	MAZDA3 s 4- & 5-Door Grand Touring
ABS/SAB/SAC Package: Anti-lock Brake System (ABS) with Electronic Brakeforce Distribution (EBD) and Brake Assist; front side-impact air bags; [†] side-impact air curtains [†] with front and rear coverage	0	0	—	S	S
SAB/SAC Package: Front side-impact air bags; [†] side-impact air curtains [†] with front and rear coverage	—	—	0 (4-Door only)	S	S
Moonroof and 6-CD Package: Power sliding-glass moonroof with one-touch-open feature; in-dash 6-disc CD changer	—	0	0	0	—
Moonroof, 6-CD and Bose® Audio System Package: Power sliding-glass moonroof with one-touch-open feature; in-dash 6-disc CD changer; Bose® Premium 222-watt 7-speaker audio system	—	—	—	—	0
Black-leather-trimmed seats	—	—	—	0	S
DVD-based navigation system with retractable screen	—	—	—	—	0
CFC-free air conditioning	0	S	S	S	S
Pearlescent paint (Crystal White Pearl Mica)	—	—	0	0	0



MAZDASPEED3

MAZDASPEED3 SPECIFICATIONS

SPECIFICATIONS	
Engine size and type	2.3L DISI turbocharged and intercooled DOHC 4-cylinder
Horsepower	263 @ 5500 rpm
Torque, lb-ft	280 @ 3000 rpm
Fuel system	Direct-Injection Spark Ignition (DISI)
Fuel requirement	Unleaded premium gasoline
Fuel economy (EPA estimated mpg, city/hwy)	20/28
Curb weight	3153 lb
EXTERIOR DIMENSIONS	
Wheelbase/overall length (in)	103.9/176.8
Overall width (in)	69.5
Overall height (in)	57.7
Track, front/rear (in)	60.4/60.0
INTERIOR DIMENSIONS	
Headroom, front/rear (in)	39.1/38.4
Legroom, front/rear (in)	41.1/36.3
Shoulder room, front/rear (in)	54.9/54.0
CAPACITIES	
Passenger volume (cu ft)	95.3
Cargo volume (cu ft)	16.5
Cargo volume, rear seats folded (cu ft)	43.4
Fuel capacity (U.S. gallons)	14.5

MAZDASPEED3 MECHANICAL FEATURES

STANDARD MECHANICAL FEATURES	Sport	Grand Touring
2.3L DISI turbocharged & intercooled engine	S	S
6-speed manual transmission	S	S
Limited-slip front differential	S	S
Mazda Advanced Torque Management System	S	S
Dynamic Stability Control (DSC) with Traction Control System (TCS)	S	S
Rack-and-pinion steering with electrohydraulic variable assist	S	S
Power-assisted 4-wheel disc brakes with larger front rotors	S	S
Anti-lock Brake System (ABS) with Electronic Brakeforce Distribution (EBD)	S	S
MAZDASPEED Sport independent strut-type front suspension	S	S
MAZDASPEED Sport E-type multilink rear suspension	S	S
MAZDASPEED front and rear stabilizer bars	S	S
Sport-tuned exhaust system	S	S

MAZDASPEED3 EQUIPMENT AND FEATURES

EXTERIOR FEATURES	Sport	Grand Touring
18-inch alloy wheels with P215/45R18 high-performance summer tires	S	S
Unique hood and front-fender design	S	S
Unique front and rear bumpers	S	S
Unique rear liftgate spoiler	S	S
Side sill extensions	S	S
Dual body-color power remote outside mirrors	S	S
Clear-lens halogen headlights with dark housings	S	S
Xenon High-Intensity Discharge (HID) low-beam headlights	-	S
Automatic on/off headlights	-	S
Halogen fog lights	S	S
Clear-lens taillights with dark housings	S	-
LED clear-lens taillights with dark housings	-	S
Variable-intermittent windshield wipers	S	-
Rain-sensing variable-intermittent windshield wipers	-	S
Rear wiper/washer with intermittent setting	S	S
Fender-mounted turn-signal repeater lights	S	S
Roof-mounted mast-type radio antenna	S	S

MAZDASPEED3 EQUIPMENT AND FEATURES

INTERIOR FEATURES	Sport	Grand Touring
Advanced front air bags* with belt-use, passenger-weight and driver's seat-position sensors	S	S
Side-impact air curtains* with front/rear coverage	S	S
Front safety-belt pretensioners with force limiters	S	S
3-point safety belts for all 5 seating positions	S	S
Tire-Pressure Monitoring System (TPMS)	S	S
MAZDASPEED high-bolstered cloth front reclining bucket seats (leather bolsters on Grand Touring)	S	S
60/40 split fold-down rear seatback	S	S
Removable rigid cargo cover	S	S
Driver's seat lifter and adjustable lumbar support	S	S
Fold-down rear center armrest with cup holders	S	S
MAZDASPEED black/red interior trim, door panel inserts and floor mats	S	S
Center console armrest with covered dual storage compartments and 12V power point	S	S
Dual front cup holders with cover	S	S
Power windows with driver's one-touch-down feature	S	S
Power door locks with 2-stage unlocking	S	S
Remote keyless illuminated entry system with Electronic Lockout Protection (ELP) and panic button feature	S	S
Rear child-safety door locks and LATCH child-safety-seat anchors	S	S
Remote fuel-filler door release	S	S
Dual front map lights; cargo-area light; ignition-keyhole light	S	S
Driver's and passenger's covered visor vanity mirrors	S	S
MAZDASPEED electroluminescent gauges with tri-mode lighting: blue (entry); white-on-black (daytime); red-on-black (nighttime)	S	S
Center instrument display panel (audio, clock and outside ambient temp)	S	S
Driving information system (trip computer)	-	S
Tilt/telescopic steering wheel	S	S
Leather-wrapped steering wheel and gearshift knob	S	S
Cruise control with steering-wheel-mounted controls	S	S
CFC-free air conditioning with pollen filter; automatic climate control	S	S
Heater/defroster with 4-speed blower and rear heater ducts	S	S
Rear window defogger; front side-window demisters	S	S
AM/FM/CD stereo with 6 speakers and automatic level control	S	-
AM/FM in-dash 6-disc CD changer and Bose® Premium 222-watt 7-speaker system	-	S
Auxiliary-audio input jack	S	S
Steering-wheel-mounted audio controls	S	S
MAZDASPEED scuff plates	S	S
Drilled aluminum alloy foot pedals	S	S
Engine-immobilizer antitheft system	S	S
Antitheft security system	-	S
OPTIONS AND OPTION PACKAGES	Sport	Grand Touring
DVD-based navigation system with retractable screen	-	O
Fuel-filler door (Pearl Satin)	O/A	O/A
All-weather floor mats	O/A	O/A
Cargo net	O/A	O/A
Compass auto-dimming rearview mirror (available with or without HomeLink®)	O/A	O/A
Wheel locks (set of 4)	O/A	O/A

S: Standard O: Optional P: Package A: Dealer-available accessory -: Not available

* Always wear your safety belt and secure children in the rear seat.

MazdaUSA.com

Wherever you see this symbol, you can get the whole story on our interactive Web site.

MAZDA3 COLOR COMBINATIONS



BLACK MICA

TRIM LEVEL	INTERIOR FABRICS
MAZDA3 i 4-Door	Black or Beige Cloth
MAZDA3 s 4-Door/5-Door	Black or Gray Cloth, Black Leather



PHANTOM PURPLE MICA

TRIM LEVEL	INTERIOR FABRICS
MAZDA3 i 4-Door	Beige Cloth
MAZDA3 s 4-Door/5-Door	Black Cloth, Black Leather



GALAXY GRAY MICA

TRIM LEVEL	INTERIOR FABRICS
MAZDA3 i 4-Door	Black Cloth
MAZDA3 s 4-Door/5-Door	Black or Gray Cloth, Black Leather



TRUE RED

TRIM LEVEL	INTERIOR FABRICS
MAZDA3 i 4-Door	Black Cloth
MAZDA3 s 4-Door/5-Door	Black Cloth, Black Leather



RALLY WHITE

TRIM LEVEL	INTERIOR FABRICS
MAZDA3 i 4-Door	Beige Cloth



AURORA BLUE MICA

TRIM LEVEL	INTERIOR FABRICS
MAZDA3 s 4-Door/5-Door	Black Cloth, Black Leather



SUNLIGHT SILVER METALLIC

TRIM LEVEL	INTERIOR FABRICS
MAZDA3 i 4-Door	Black Cloth
MAZDA3 s 4-Door/5-Door	Black or Gray Cloth, Black Leather



PHANTOM BLUE MICA

TRIM LEVEL	INTERIOR FABRICS
MAZDA3 s 4-Door/5-Door	Black Cloth, Black Leather



SHIMMERING SAND METALLIC

TRIM LEVEL	INTERIOR FABRICS
MAZDA3 i 4-Door	Beige Cloth



ICE BLUE METALLIC

TRIM LEVEL	INTERIOR FABRICS
MAZDA3 i 4-Door	Beige Cloth



CRYSTAL WHITE PEARL MICA (optional)

TRIM LEVEL	INTERIOR FABRICS
MAZDA3 s 4-Door/5-Door	Black Cloth, Black Leather

MAZDASPEED3 COLOR COMBINATIONS



BLACK MICA

TRIM LEVEL	INTERIOR FABRICS
MAZDASPEED3	Black Cloth or Black Cloth/Leather



TRUE RED

TRIM LEVEL	INTERIOR FABRICS
MAZDASPEED3	Black Cloth or Black Cloth/Leather



SUNLIGHT SILVER METALLIC

TRIM LEVEL	INTERIOR FABRICS
MAZDASPEED3	Black Cloth or Black Cloth/Leather



COSMIC BLUE MICA

TRIM LEVEL	INTERIOR FABRICS
MAZDASPEED3	Black Cloth or Black Cloth/Leather

WHEEL OPTIONS



15-INCH WHEEL COVER



16-INCH ALLOY

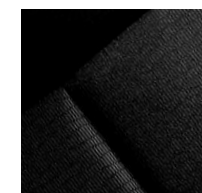


17-INCH ALLOY

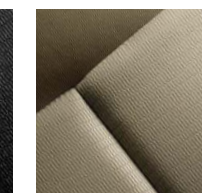


18-INCH ALLOY

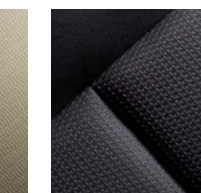
UPHOLSTERY



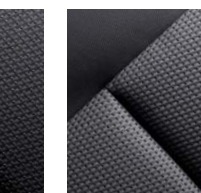
BLACK CLOTH
MAZDA3 i 4-Door



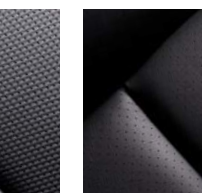
BEIGE CLOTH
MAZDA3 i 4-Door



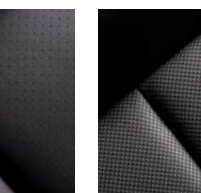
BLACK CLOTH
MAZDA3 s 4-Door/5-Door



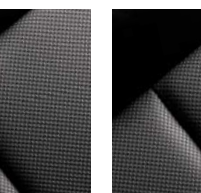
GRAY CLOTH
MAZDA3 s 4-Door/5-Door



BLACK LEATHER
MAZDA3 s 4-Door/5-Door



BLACK CLOTH
MAZDASPEED3



BLACK CLOTH/LEATHER
MAZDASPEED3

Product Changes and Options Availability: Following publication of this brochure, certain changes in standard equipment, options, prices and the like, or product delays may have occurred which would not be included in these pages. Your Mazda dealer is your best source for up-to-date information. Mazda reserves the right to change product specifications at any time without incurring obligations. Options shown or described in this brochure are available at extra cost and may be offered only in combination with other options or subject to additional ordering requirements or limitations.

A top priority is your peace of mind.

We want your new MAZDA3 or MAZDASPEED3 to be a source of pride, exhilaration and peace of mind for years to come. Which is why every new 2007 Mazda vehicle is covered by all of the following:

- A 3-year/36,000-mile* "bumper-to-bumper" limited warranty.
- A 3-year/36,000-mile,* 24/7 Emergency Roadside Assistance program.
- A 5-year/60,000-mile* limited powertrain warranty.

For details, please see your Mazda dealer, visit MazdaUSA.com or call toll-free 800-639-1000.

Make the ultimate cyberspace pit stop.

For more motorized fun of the virtual variety, Web surf yourself straight over to MazdaUSA.com and add it to your list of favorites. You can scope out all the new Mazdas—even compare them to the competition. Download photos, vehicle specs and MSRPs. Order brochures. Score seasonal incentives and special services offers. Pick up handy maintenance tips. Get updates on driving technology, tuning and

motorsports in the MAZDASPEED area. Interactively "build" the MAZDA3 or MAZDASPEED3 of your dreams and trick it out with your favorite accessories. Request a quote. Even locate a Mazda dealer. It's the quick and easy way to bring yourself totally up to speed.



Financing made simple.

Whether you're interested in buying or leasing a new Mazda, Mazda American Credit (MAC) is committed to helping make the financing process a convenient, hassle-free and satisfying experience. Put our first-class customer service to the test. Simply ask your Mazda dealer to explain which MAC purchase or lease plan best meets your needs. Or visit MazdaCredit.com for more information.

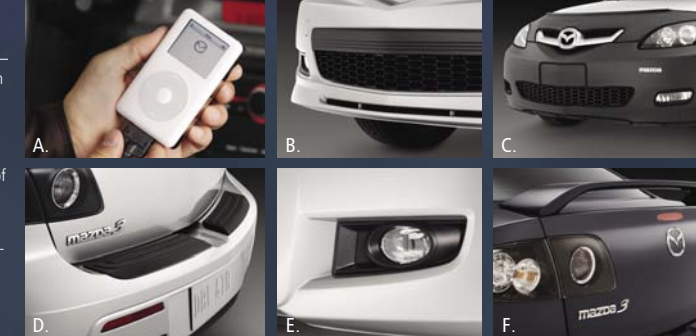
* Whichever comes first.

Genuine Mazda Accessories: The real deal.

Part of the joy of owning a new MAZDA3 or MAZDASPEED3 is personalizing it. And the best way to enhance its appearance or performance is with Genuine Mazda Accessories. Better yet, all Genuine Mazda Accessories installed by your Mazda dealer, prior to or at initial vehicle retail delivery, carry the same new-vehicle limited warranty as your new Mazda. See your dealer for details.

MAZDA3 ACCESSORIES

A. Mazda iPod® Integration Module. Taking your Apple® iPod along for the ride just became a lot easier. Mazda's iPod Integration Module allows you to play your iPod through your MAZDA3 audio system with crystal-clear sound and a built-in battery charger. Works with all 30-pin, dock-connector-equipped iPods. (iPod not included. See your dealer for compatibility conditions and limitations on installation.) B. Front Air Dam. Give your MAZDA3 5-Door a lowered, ground-effects-inspired racer look. Designed to provide a bold, aggressive appearance that integrates well with the existing body styling. C. Front Mask. Protect the front end of your MAZDA3 from the nicks, scratches and dings caused by dirt, road debris and insects. Custom-tailored for a snug, streamlined fit. D. Rear Bumper Guard. Protects the rear bumper of your MAZDA3 5-Door from chips and scratches when you're loading or unloading. Looks sharp, too. E. Fog Lights. Give yourself extra visibility in foul weather. Designed to provide an integrated, factory-installed appearance. F. Rear Wing Spoiler. Display a more sporty attitude and enhance your MAZDA3's sports-car look with this racing-inspired Rear Wing Spoiler. Color-matched to your MAZDA3 4-Door's factory color.

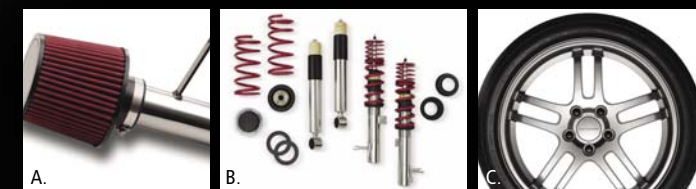


Apple and iPod are registered trademarks of Apple Computer, Inc.

- Splash Guards—Front (2)* Rear (2)*
- Car Cover
- Cover Cable Lock
- Moonroof Wind Deflector
- Windshield Sunscreen
- Door-Edge Guards¹ (4)*
- Side Sill Extensions¹
- Fuel-Filler Door—Satin Finish
- License-Plate Frame
- Rear Lip Spoiler¹
- Ashtray Replacement Compartment
- Rear Ashtray
- Compass Auto-Dimming Mirror
- Compass Auto-Dimming Mirror with HomeLink®
- Cassette Player
- In-Dash 6-Disc CD/MP3 Changer
- Remote Engine Start (Automatic Transmission Only)
- SIRIUS Satellite Radio Receiver Kit²
- PhatNoise® Car Audio System
- Switching Box (for iPod, SIRIUS or PhatNoise®)
- Power Inverter (115-volt)
- Parking Brake Cover
- All-Weather Floor Mats (4)*
- Carpet Floor Mats (4)*
- Carpet Cargo Mat
- Cargo Net
- Cargo Tray
- First Aid Kit
- Roadside Assistance Kit
- Touch-Up Paint¹
- Wheel Locks (4)*

MAZDASPEED3 ACCESSORIES

A. MAZDASPEED Cold-Air Intake. Take in a fresh breath of Zoom-Zoom with a MAZDASPEED Cold-Air Intake. Made from high-quality aluminum. Tubes are mandrel bent, polished to a brilliant shine and clear-coated for a lasting finish. The intake utilizes the latest in dry-filter technology for improved engine performance, while providing outstanding air filtration. B. MAZDASPEED Coil Over Suspension Kit. Independent rebound and compression damper adjustments. Ride height adjustment from 7 to 25 mm lower than stock. Provides spring rates that are approximately double those of the stock springs. For a high-performance, race-tuned suspension that enhances both steering precision and handling. C. MAZDASPEED 18-Inch Forged Aluminum Wheels. (18x7.5J) Reduce the unsprung weight of your MAZDASPEED3 with these lightweight (7.7 kg), split five-spoke, one-piece, forged-aluminum wheels. Reducing unsprung weight improves handling response, braking and acceleration.



- Cargo Net
- Fuel-Filler Door—Pearl Satin
- All-Weather Floor Mats
- Auto-Dimming Mirror with Compass
- Auto-Dimming Mirror with HomeLink®
- SIRIUS Satellite Radio Receiver Kit²
- Wheel Locks (4)*
- iPod® Integration Module
- PhatNoise® Car Audio System
- Cassette Player
- Car Cover
- Front Mask with MAZDASPEED Logo
- Sport Exhaust

¹ Color-keyed item(s).

² SIRIUS® requires a subscription and Mazda satellite radio receiver accessory kit. Available only in the U.S., except Alaska and Hawaii.

* Quantity per set.



All children instinctively know it.

A few adults still remember it.

One unique car company refuses to outgrow it.

In grown-up language, it means the exhilaration and liberation that come from experiencing sheer motion.

But as usual, children put it much better.

And simply call it Zoom-Zoom.

We practice it every day.

It's why we build the kind of cars we do.

Mazda. Always the soul of a sports car.®



zoom-zoom



mazda
MazdaUSA.com