

MADE
WITH
SOUL



MAZDA



MAZDA CX-3

MAZDA.CO.ZA



3
YEAR
UNLIMITED KM
WARRANTY AND
SERVICE PLAN



M A D E W I T H S O U L

From perfecting the rotary engine and winning the Le Mans race the first time we entered it, to breaking the world record for the most-sold two-seater convertible in history, we are driven forward by the desire to defy convention. We believe that if you can imagine it, we can make it happen.

This desire is the fuel behind everything we create and achieve and now, it has given us **SKYACTIV TECHNOLOGY**, '**KODO – Soul of Motion**' design and countless other successes that were once considered impossible feats. These pages show how striving to do what others cannot is not only rewarding but also integral to creating innovative, beautiful cars.



MAZDA CX-3

THE

MAZDA CX-3

Introducing the Mazda CX-3, the first compact SUV that combines the stylish design of a hatchback with the versatility of an SUV. Based on the Japanese sense of beauty, we make the car feel like it's alive. Built with city driving in mind yet capable of taking on country roads, the Mazda CX-3 is equipped with the latest **SKYACTIV TECHNOLOGY**, giving it natural agility coupled with outstanding fuel efficiency. It's instantly clear that this crossover is out of the ordinary; a creation of '**KODO — Soul of Motion**' design. KODO is inspired by the instant when energy bursts into motion. It's the powerful grace of an animal pouncing, or a human leaping into action. Balancing athletic presence, streamlined simplicity and elegant detail, the Mazda CX-3 brings rare imagination to the compact SUV.





DRIVER

CENTRIC



STAY CONNECTED
MZD Connect presents a world of online infotainment and content on a 7-inch screen. MZD Connect is standard on Dynamic, Individual and Individual Plus models.



ENHANCED CONTROL
The multi-function commander control keeps your infotainment easily at hand, helping you to concentrate on driving while making selections. Standard on Dynamic, Individual and Individual Plus models.

Staying connected in the Mazda CX-3 is simple when using the MZD Connect system with commander. Controls are where you naturally expect them to be. The MZD Connect system responds to a wider variety of needs by greatly improving the convenience of functions that require Bluetooth® connectivity, such as hands-free phone operation, reception of short text messages and Internet radio. Just as thoughtful is the multi-function commander, which allows complete control while on the move with minimum distraction. MZD Connect is standard on Dynamic, Individual and Individual Plus models.

COCKPIT

EFFICIENCY TO GET EXCITED BY

Mazda is committed to reducing the environmental impact of our vehicles, yet we'd never want to compromise the driving enjoyment that's core to our DNA. In answering this challenge, we arrived at a breakthrough – SKYACTIV TECHNOLOGY. In every way imaginable, the Mazda CX-3 has been created to unlock efficiency and unleash performance potential. From a lightweight body to an advanced engine, we've been exacting and exhaustive. i-Stop cleverly saves fuel by turning off the engine when you come to a stop, positioning it perfectly for a quick restart. Standard on Active Auto, Dynamic, Individual and Individual Plus models.



SKYACTIV-G 2.0L PETROL ENGINE

A new-generation internal combustion engine generates more performance from less fuel thanks to a precise multi-hole direct injection system. A unique piston design improves combustion to boost power and lower emissions. Reduced friction liberates extra power, while a 4-2-1 exhaust layout lifts efficiency. The 4-cylinder engine delivers a sporty 115 kW of power and 206 Nm of torque, using as little as 6.7 litres of fuel every 100 km (combined).



SKYACTIV-BODY

We've applied the high standards of Takumi craftsmanship to the Mazda CX-3, like all our Mazda cars. The new-generation design and materials reduce mass while achieving high rigidity. Key joints are strengthened by advanced techniques requiring no heavy reinforcement. High and ultra-high tensile steel cuts weight and boosts strength. Despite being light, the Mazda CX-3 delivers world-class collision protection.



SKYACTIV-CHASSIS

The sense of 'oneness' between car and driver is amplified through careful optimisation throughout. Agility and refinement are ensured by a lightweight front strut and rear torsion beam suspension, employing firm bushings and precise geometry. Electric power-assisted steering delivers secure yet responsive handling and also saves fuel.



SKYACTIV-DRIVE AUTOMATIC TRANSMISSION

We want you to feel connected to the Mazda CX-3, so you can drive in a way that feels completely natural. The 6-speed automatic transmission combines the best aspects of conventional automatic, continuously variable and dual-clutch transmissions. It connects directly with the engine across a far wider range than other automatics for increased fuel economy and more direct power delivery.

SKYACTIV MANUAL TRANSMISSION

The Mazda CX-3 helps you to be the best driver you can be. The 6-speed SKYACTIV manual transmission delivers accurate, sports-car style shifting through simplified design and a precision mechanism. More compact and lighter than comparable transmissions, it significantly cuts friction to improve fuel economy.



MAZDA CX-3 2.0L ACTIVE (MANUAL & AUTO)

ACTIVE FEATURES INCLUDE:

- Power (kW): 115
- Torque (Nm): 206
- i-Stop (Standard from 2.0L Active Auto)
- Power folding mirrors
- Manual air-conditioning
- Electronic Park Brake (EPB)
- Radio - CD player/AUX jack/1 USB port
- 4 Speakers
- Bluetooth® hands-free system
- Multi-function steering wheel with audio controls
- Cruise control
- Front centre console armrest
- Power windows (front & rear)
– Power windows one touch system (driver)
- Smart keyless push-button engine start
- Height adjustable seat - driver
- ISOFIX
- Shark fin antenna
- 16" Alloy wheels



CRUISE CONTROL



POWER FOLD MIRRORS



ELECTRONIC PARKING BRAKE



**MAZDA CX-3
2.0L DYNAMIC
(MANUAL & AUTO)**

FEATURES ADDITIONAL TO ACTIVE INCLUDE:

- Auto headlamps
- Front LED fog lamp
- Front rain-sensing wipers
- MZD Connect system
 - 7-Inch display screen
 - Commander dial
 - USB connectivity ports - 2 ports
 - Internet radio integration (Pandora®, Stitcher & Aha™)
- 6-Speaker sound system
- Leather-wrapped: steering wheel, gearshift knob & handbrake handle
- Auto paddle transmission switches
- Air-conditioning (automatic)
- Sunglass holder
- Rear centre seat armrest with cupholders
- Auto dimming rear-view mirror
- Smart advanced keyless entry
- Parking sensors - rear



MZD CONNECT



AUTOMATIC AIR-CONDITIONING





**MAZDA CX-3
2.0L INDIVIDUAL
(AUTO)**

FEATURES ADDITIONAL TO DYNAMIC INCLUDE:

- LED headlamps
- Daytime Running Lamps (DRL)
- Rear Combination Lamps (RCL)
- Parking sensors - rear
- Reverse camera
- Head-Up Display (HUD)
- Seat trim - black leather
- BOSE® sound system
– 7-Speaker sound system with subwoofer
- Integrated navigation
- Sunroof - power slide & tilt glass
- Chrome side door garnish
- 18" Alloy wheels



LED DAYTIME RUNNING LAMPS



BOSE® SOUND SYSTEM



REVERSE CAMERA



MAZDA CX-3 2.0L INDIVIDUAL PLUS (AUTO)

FEATURES ADDITIONAL TO INDIVIDUAL INCLUDE:

- Auto fold mirrors
- Adaptive LED Headlamps (ALH)
- Blind Spot Monitoring (BSM)
- Lane Departure Warning (LDW)
- Driver Attention Alert (DAA)
- Smart City Brake Support (SCBS)



HEAD-UP DISPLAY



SUNROOF



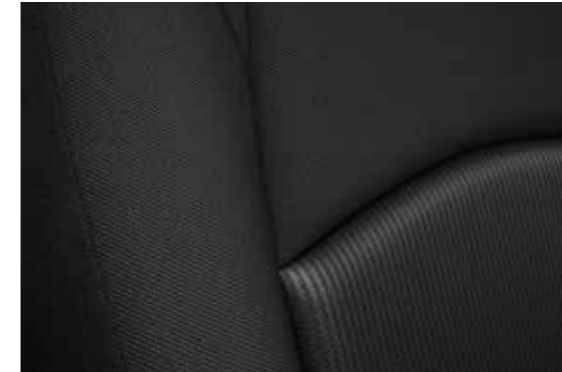
INTEGRATED NAVIGATION

SKYACTIV TECHNOLOGY



INTERIOR TRIM

ACTIVE



DYNAMIC



INDIVIDUAL AND INDIVIDUAL PLUS



ALLOY WHEELS

ACTIVE AND DYNAMIC



INDIVIDUAL AND INDIVIDUAL PLUS

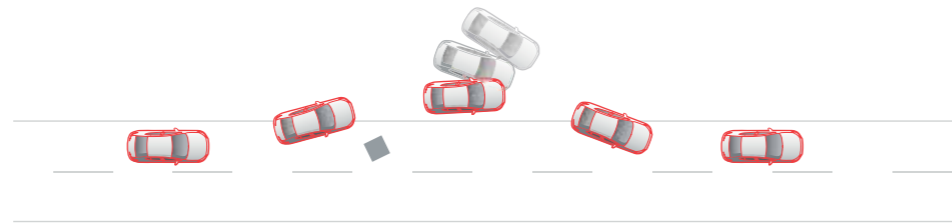


CONFIDENCE-INSPIRING SAFETY

Aside from agile responses helping you stay clear of trouble, Mazda CX-3 comes with a suite of safety features that are primed for anything. Its light weight delivers sporty performance, yet its body is immensely strong. Multiple load paths divert crash energy from the occupant cell, helping to achieve world-class collision safety. Six SRS airbags are integrated, including front, side (front) and curtain (front and rear). The latest in safety is there for you. Dynamic Stability Control (DSC) with integrated Traction Control System (TCS) is standard for all models. The stopping power of four big disc brakes incorporates an Anti-lock Braking System (ABS) and Electronic Brake-force Distribution (EBD), which optimises braking force according to the vehicle's load. Emergency Brake Assist (EBA) recognises urgent braking, maximising braking force right when you need it. Feel confident after braking on an incline with Hill Launch Assist (HLA), giving you a smooth start on re-acceleration. The Emergency Stop Signal (ESS) bolsters safety by flashing the hazard lights to warn drivers behind you. Mazda CX-3 also gives you high security. Remote control locking and an engine immobiliser are standard.

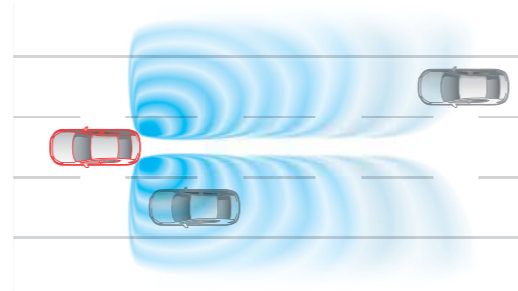
READY TO HELP

If you ever need to react to a hazard, Mazda CX-3 is ready. Dynamic Stability Control (DSC) acts instantly, braking the inner rear wheel to counter understeer (or outer front wheel to combat oversteer). The Traction Control System (TCS) also reduces torque to the driven wheels to minimise slip. With control maintained, the vehicle can be steered around the hazard.



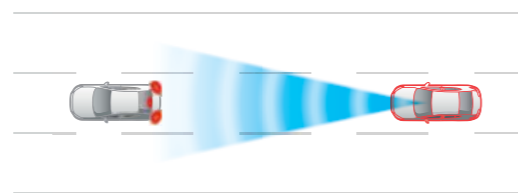
BLIND SPOT MONITORING (BSM)

By scanning external mirrors' blind spots, radars detect any unseen vehicles to help you avoid making hazardous lane changes. An LED warning icon on the relevant mirror is accompanied by beeping alerts. Standard on the Individual Plus model only.



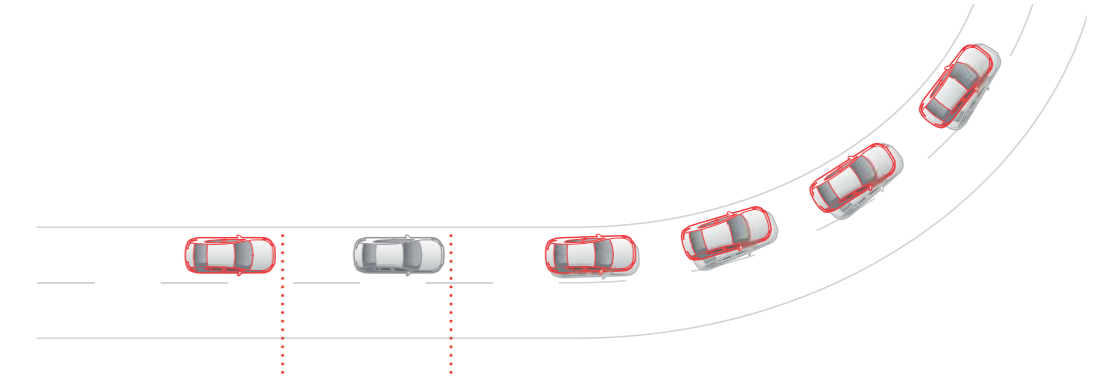
SMART CITY BRAKE SUPPORT (SCBS)

Helps prevent, or lessen, low-speed impacts. Now with pedestrian detection, Smart City Brake Support (SCBS) monitors the vehicle in front to assess the possibility of a collision at forward speeds of 4 - 80 km/h. If the system detects a high risk of impact, it issues visual and audible warnings and primes the brakes for faster response should the driver brake. If the driver does not brake, the brakes are applied automatically. SCBS also works in reverse at speeds of 2 - 8 km/h. Standard on the Individual Plus model only.



G-VECTORING CONTROL (GVC)

The 2.0 litre SKYACTIV engine introduces G-Vectoring Control (GVC), the first innovation from the SKYACTIV-VEHICLE DYNAMICS series technology. By finely controlling engine torque, based on the steering and acceleration of the driver, GVC improves both handling for the driver and ride quality for the passengers around corners.

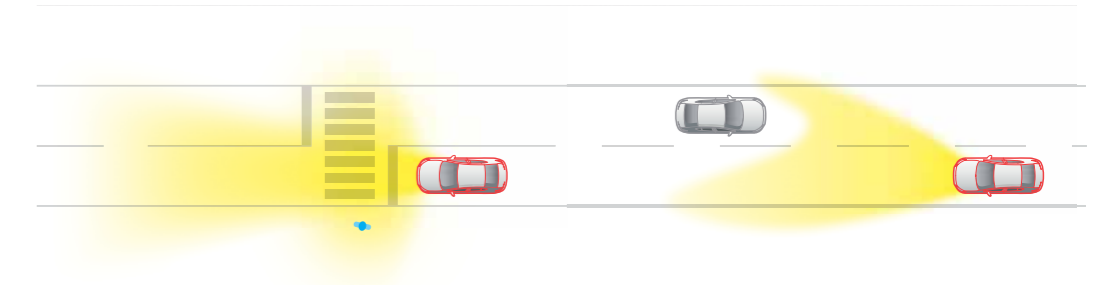


STOPPING OVER

Stopping distance with Emergency Brake Assist (EBA), Anti-lock Braking System (ABS) and Electronic Brake-force Distribution (EBD). Stopping distance with no assistance.

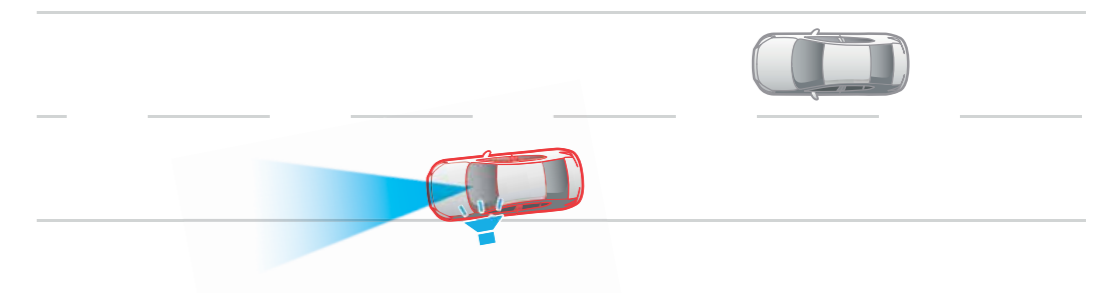
ADAPTIVE LED HEADLAMPS (ALH)

Individual control of several LEDs allows precise adjustment of the lighting pattern. The system automatically broadens visibility at low speeds, shapes the high beam to help avoid dazzling other drivers and raises beam height at highway speeds to extend vision area. Standard on Individual Plus model only.



LANE DEPARTURE WARNING (LDW)

Using a windscreen-mounted camera to monitor road lane markings, Lane Departure Warning (LDW) sounds an audible warning if you're about to stray from your lane. Standard on the Individual Plus model only.



S P E C I F I C A T I O N S

Mazda CX-3	2.0 Active	2.0 Active Auto	2.0 Dynamic	2.0 Dynamic Auto	2.0 Individual Auto	2.0 Individual Plus Auto
Powertrain						
Engine type	2.0 litre in-line 4 cylinder 16 valve DOHC S-VT petrol (SKYACTIV-G)	2.0 litre in-line 4 cylinder 16 valve DOHC S-VT petrol (SKYACTIV-G) with i-Stop	2.0 litre in-line 4 cylinder 16 valve DOHC S-VT petrol (SKYACTIV-G) with i-Stop	2.0 litre in-line 4 cylinder 16 valve DOHC S-VT petrol (SKYACTIV-G) with i-Stop	2.0 litre in-line 4 cylinder 16 valve DOHC S-VT petrol (SKYACTIV-G) with i-Stop	2.0 litre in-line 4 cylinder 16 valve DOHC S-VT petrol (SKYACTIV-G) with i-Stop
Bore and stroke	83.5 x 91.2	83.5 x 91.2	83.5 x 91.2	83.5 x 91.2	83.5 x 91.2	83.5 x 91.2
Compression ratio	14,0	14,0	14,0	14,0	14,0	14,0
Engine capacity	1998	1998	1998	1998	1998	1998
Transmission	6-Speed Manual	6-Speed Auto	6-Speed Manual	6-Speed Auto	6-Speed Auto	6-Speed Auto
Power (kW @ rpm)	115 @ 6000	115 @ 6000	115 @ 6000	115 @ 6000	115 @ 6000	115 @ 6000
Torque (Nm @ rpm)	206 @ 2800	206 @ 2800	206 @ 2800	206 @ 2800	206 @ 2800	206 @ 2800
CO ₂ emissions (g/km)	165	155	163	155	155	155
Emissions standard	Euro stage IV	Euro stage IV	Euro stage IV	Euro stage IV	Euro stage IV	Euro stage IV
Fuel consumption - combined (L/100km)	7,1	6,7	7,0	6,7	6,7	6,7
Fuel tank capacity (L)	48	48	48	48	48	48
Top speed (km/h)	202	197	202	197	197	197
Transmission						
Type	6-Speed Manual	6-Speed Auto	6-Speed Manual	6-Speed Auto	6-Speed Auto	6-Speed Auto
Gear ratio 1 st	3,363	3,552	3,363	3,552	3,552	3,552
Gear ratio 2 nd	1,947	2,002	1,947	2,002	2,002	2,002
Gear ratio 3 rd	1,300	1,452	1,300	1,452	1,452	1,452
Gear ratio 4 th	1,029	1,000	1,029	1,000	1,000	1,000
Gear ratio 5 th	0,837	0,708	0,837	0,708	0,708	0,708
Gear ratio 6 th	0,680	0,599	0,680	0,599	0,599	0,599
Reverse	3,385	3,893	3,385	3,893	3,893	3,893
Final drive	4,105	4,325	4,105	4,325	4,325	4,325

Mazda CX-3	2.0 Active	2.0 Active Auto	2.0 Dynamic	2.0 Dynamic Auto	2.0 Individual Auto	2.0 Individual Plus Auto
Chassis						
Suspension type - front	MacPherson strut	MacPherson strut	MacPherson strut	MacPherson strut	MacPherson strut	MacPherson strut
Suspension type - rear	Torsion beam axle	Torsion beam axle	Torsion beam axle	Torsion beam axle	Torsion beam axle	Torsion beam axle
Brake type - front	Ventilated disc	Ventilated disc	Ventilated disc	Ventilated disc	Ventilated disc	Ventilated disc
Brake type - rear	Solid disc	Solid disc	Solid disc	Solid disc	Solid disc	Solid disc
Diameter front (mm)	280	280	280	280	280	280
Diameter rear (mm)	281	281	281	281	281	281
Electronic power-assisted steering	Std	Std	Std	Std	Std	Std
Turning circle curb to curb (m)	10,6	10,6	10,6	10,6	10,6	10,6
Weights and Capabilities						
Gross Vehicle Mass (kg)	1,643	1,728	1,670	1,728	1,735	1,735
Towing mass (kg) braked	850	850	850	850	850	850
Towing mass (kg) unbraked	630	650	635	650	655	655
Luggage volume (L)	264	264	264	264	264	264
Exterior Dimensions (mm)						
Length (mm)	4,275	4,275	4,275	4,275	4,275	4,275
Width (mm)	1,765	1,765	1,765	1,765	1,765	1,765
Height (mm)	1,550	1,550	1,550	1,550	1,550	1,550
Wheelbase (mm)	2,570	2,570	2,570	2,570	2,570	2,570
Front track (mm)	1,525	1,525	1,525	1,525	1,525	1,525
Rear track (mm)	1,520	1,520	1,520	1,520	1,520	1,520
Front overhang (mm)	910	910	910	910	910	910
Rear overhang (mm)	795	795	795	795	795	795

Mazda CX-3	2.0 Active	2.0 Active Auto	2.0 Dynamic	2.0 Dynamic Auto	2.0 Individual Auto	2.0 Individual Plus Auto
Ground clearance - laden/unladen (mm)	155/160	155/160	155/160	155/160	155/160	155/160
Exterior						
Headlamps	Halogen	Halogen	Halogen	Halogen	LED	LED
Daytime Running Lamps (DRL)	-	-	-	-	•	•
Headlamps auto on/off function	-	-	•	•	•	•
Adaptive LED Headlamps (ALH)	-	-	-	-	-	•
Front fog lamps (LED)	-	-	•	•	•	•
Rear Combination Lamps (RCL)	-	-	-	-	•	•
Power sliding and tilt glass sunroof	-	-	-	-	•	•
Parking sensor - rear	-	-	•	•	•	•
Reverse camera (back-up monitor)	-	-	-	-	•	•
Power fold mirrors	•	•	•	•	•	•
Auto fold mirrors	-	-	-	-	-	•
Side door garnishing	Black	Black	Black	Black	Chrome	Chrome
Privacy glass (rear side and back)	-	-	-	-	•	•
Front rain-sensing wipers	-	-	•	•	•	•
Rear wiper with intermittent function	•	•	•	•	•	•
Interior						
Air-conditioning	Manual	Manual	Auto	Auto	Auto	Auto
Cruise control	•	•	•	•	•	•

Mazda CX-3	2.0 Active	2.0 Active Auto	2.0 Dynamic	2.0 Dynamic Auto	2.0 Individual Auto	2.0 Individual Plus Auto
Electronic Park Brake (EPB)	•	•	•	•	•	•
Auto dimming rear-view mirror	-	-	•	•	•	•
Power windows (front and rear)	•	•	•	•	•	•
Power window one-touch system (driver)	•	•	•	•	•	•
Door pockets (front and rear)	•	•	•	•	•	•
Instrument panel light dimmer	•	•	•	•	•	•
Interior illumination: cargo room lamp	•	•	•	•	•	•
Map reading spot lamps	•	•	•	•	•	•
Leather-wrapped steering wheel	-	-	•	•	•	•
Leather-wrapped gearshift knob	-	-	•	•	•	•
Tilt and telescopic adjustable steering wheel	•	•	•	•	•	•
Trip computer	•	•	•	•	•	•
Overhead sunglasses storage box	-	-	•	•	•	•
Front centre console armrest	•	•	•	•	•	•
Rear centre seat armrest with cupholders	-	-	•	•	•	•
Seat trim - black cloth	•	•	•	•	-	-
Seat trim - black leather	-	-	-	-	•	•
Seat - rear fold down (60:40 split)	•	•	•	•	•	•
Smart advanced keyless entry	-	-	•	•	•	•

Mazda CX-3	2.0 Active	2.0 Active Auto	2.0 Dynamic	2.0 Dynamic Auto	2.0 Individual Auto	2.0 Individual Plus Auto
Smart keyless push-button engine start	•	•	•	•	•	•
Head-Up Display (HUD)	-	-	-	-	•	•
Vanity mirrors (front)	•	•	•	•	•	•
Infotainment						
MZD Connect system	-	-	•	•	•	•
- 7-Inch display screen	-	-	•	•	•	•
- USB connectivity port/s	1	1	2	2	2	2
- Bluetooth® hands-free system	-	-	•	•	•	•
- CD player	•	•	•	•	•	•
- AUX jack	•	•	•	•	•	•
Mazda Standard Radio	•	•	-	-	-	-
Integrated navigation	-	-	o	o	•	•
BOSE® speaker system	-	-	-	-	•	•
Speaker quantity	4	4	6	6	7	7
Multi-function steering wheel with audio controls	•	•	•	•	•	•
Safety and Security						
Airbags SRS: driver, passenger, side and curtain	•	•	•	•	•	•
Anti-lock Braking System (ABS)	•	•	•	•	•	•
Burglar alarm system	•	•	•	•	•	•

Mazda CX-3	2.0 Active	2.0 Active Auto	2.0 Dynamic	2.0 Dynamic Auto	2.0 Individual Auto	2.0 Individual Plus Auto
Child restraint anchor points	•	•	•	•	•	•
Dynamic Stability Control (DSC)	•	•	•	•	•	•
Electronic Brake-force Distribution (EBD)	•	•	•	•	•	•
Emergency Brake Assist (EBA)	•	•	•	•	•	•
Engine immobiliser	•	•	•	•	•	•
Hill Launch Assist (HLA)	•	•	•	•	•	•
Blind Spot Monitoring (BSM)	-	-	-	-	-	•
Lane Departure Warning (LDW)	-	-	-	-	-	•
Smart City Brake Support (front and rear)	-	-	-	-	-	•
Driver Attention Alert (DAA)	-	-	-	-	-	•
High mount stop lamp	•	•	•	•	•	•
Remote central locking	•	•	•	•	•	•
Seat-belt warning (driver and passenger)	•	•	•	•	•	•
Seat-belts 3-point lap-sash (all seats)	•	•	•	•	•	•
Seat-belts with pre-tensioners (front), load-limiters and height-adjustable shoulder anchorages	•	•	•	•	•	•
Side impact door beams	•	•	•	•	•	•
Super lock system	•	•	•	•	•	•

Mazda CX-3	2.0 Active	2.0 Active Auto	2.0 Dynamic	2.0 Dynamic Auto	2.0 Individual Auto	2.0 Individual Plus Auto
Whiplash-minimising front seats	•	•	•	•	•	•
Wheels and Tyres						
Alloy wheels	•	•	•	•	•	•
Tyre size	215/60/R16	215/60/R16	215/60/R16	215/60/R16	215/50/R18	215/50/R18
Wheel size	16 x 6.5 J	16 x 6.5 J	16 x 6.5 J	16 x 6.5 J	18 x 7.0 J	18 x 7.0 J
Spare tyre type	Temporary (steel)	Temporary (steel)	Temporary (steel)	Temporary (steel)	Temporary (steel)	Temporary (steel)
MazdaCare						
Service plan	3 Years/ Unlimited km	3 Years/ Unlimited km	3 Years/ Unlimited km	3 Years/ Unlimited km	3 Years/ Unlimited km	3 Years/ Unlimited km
Service intervals	15 000km	15 000km	15 000km	15 000km	15 000km	15 000km
Warranty	3 Years/ Unlimited km	3 Years/ Unlimited km	3 Years/ Unlimited km	3 Years/ Unlimited km	3 Years/ Unlimited km	3 Years/ Unlimited km
Roadside assistance	3 Years/ Unlimited km	3 Years/ Unlimited km	3 Years/ Unlimited km	3 Years/ Unlimited km	3 Years/ Unlimited km	3 Years/ Unlimited km

- = Standard
- = Optional
- = Not available

Disclaimer: Information and specs are based on the latest product information available at time of publication and might not meet RSA spec. Mazda Southern Africa (Pty) Ltd reserves the right to make changes without notice in product content and price at any time. For the latest details, always contact your Mazda dealer. Copyright subsists in this material, and permission to duplicate any part thereof should be sought from Mazda Southern Africa. Compilation date: April 2020. Terms and conditions apply.

COLOUR RANGE



SNOWFLAKE WHITE PEARL



SOUL RED CRYSTAL



JET BLACK



DEEP CRYSTAL BLUE



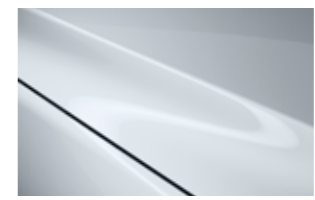
TITANIUM FLASH



ETERNAL BLUE



MACHINE GREY



CERAMIC



ARCTIC WHITE

3-YEAR MAZDA UNLIMITED KILOMETRE WARRANTY

Every Mazda is designed and built to the highest standards of performance and reliability. For reassurance, our Mazda vehicles are backed up by a 3-year Unlimited Kilometre Factory Warranty.

3-YEAR MAZDACARE ROADSIDE ASSISTANCE

Mazda cares about your peace of mind. That's why we offer a 3-year Unlimited Roadside Assistance Plan. It includes toll-free calls and services such as emergency medical help and free towing rescue due to minor or major mishaps.

3-YEAR MAZDACARE UNLIMITED KILOMETRE SERVICE PLAN

MazdaCare has designed a service plan to suit your needs. It covers scheduled services for 3 years, regardless of your mileage. The service plan operates alongside the Mazda Unlimited Kilometre Warranty.



MADE
WITH
SOUL



MAZDA



MAZDA CX-3

MAZDA.CO.ZA



3 YEAR
UNLIMITED KM
WARRANTY AND
SERVICE PLAN

MAZDA MOTOR
CORPORATION
100
YEARS
1920 2020