



mazda

ZOOM-ZOOM



3
YEAR
UNLIMITED KM
WARRANTY &
SERVICE PLAN

mazda.co.za



| The impossible made possible.

MAZDA 3

魂動

KODO : SOUL of MOTION



The impossible made possible

From perfecting the rotary engine and winning Le Mans the first time we entered it, to breaking the world record for the most-sold two-seater convertible in history, Mazda has a long history of making the impossible possible. We are driven forward by the desire to defy convention and we believe that if you can imagine it, we can make it happen. This desire is the fuel behind everything we create and achieve and now it has given us SKYACTIV TECHNOLOGY, 'KODO – Soul of Motion' design and countless other successes that were once considered impossible feats. This brochure demonstrates how rewarding it is to make the impossible, possible, and how this results in innovative beautiful cars.

KODO – Soul of Motion. Moves you from the first look

Innovative technology, exciting performance and stunning presence. The dynamic style of the new Mazda3 is the result of 'KODO – Soul of Motion' design. KODO captures the moment energy becomes motion. It's the powerful grace of an animal pouncing, or a leopard leaping into action. This athleticism is expressed with elegance, allowing the new Mazda3 to make a premium impression.



Designed around the driver

Mazda3 uses intuitive technology that puts you naturally in control. A large central screen puts system information at eye level to access audio system and Bluetooth® connectivity for driving enjoyment. While an intuitively placed rotary commander allows you to make your selections without having to look away from the road. Being able to switch menus, audio and navigation (Astina and Astina Plus models only) through voice command further adds to effortless control.

The elegant cabin is precisely crafted around the driver. The stylish instrument panel and thoughtfully positioned controls keep you focused on enjoying the drive. Concentration is enhanced by the Head-Up Display in selected models, which projects key data into your line of sight.



Mazda3. Be in the driver's seat

Every element that makes driving rewarding has been taken to the next level in the Mazda3. A totally new generation vehicle, it delivers sophisticated design and sports performance while achieving outstanding fuel economy thanks to SKYACTIV TECHNOLOGY.

Go like never before

The way the Mazda3 moves will leave you wanting more. Its lighter weight unleashes sporting agility whilst delivering smooth-riding, sure-steering confidence. The 2.0 litre SKYACTIV-G petrol engine now with G-Vectoring Control (GVC) is quick to respond with refined thrust. Whether automatic or manual transmission, shift gears with polished precision while exceptional economy adds to the thrill of the drive. Your progress is always quiet and efficient, thanks to a sleek body that effortlessly cuts through the air. Meanwhile, the renowned 1.6 MZR engine continues to deliver exceptional response in performance.

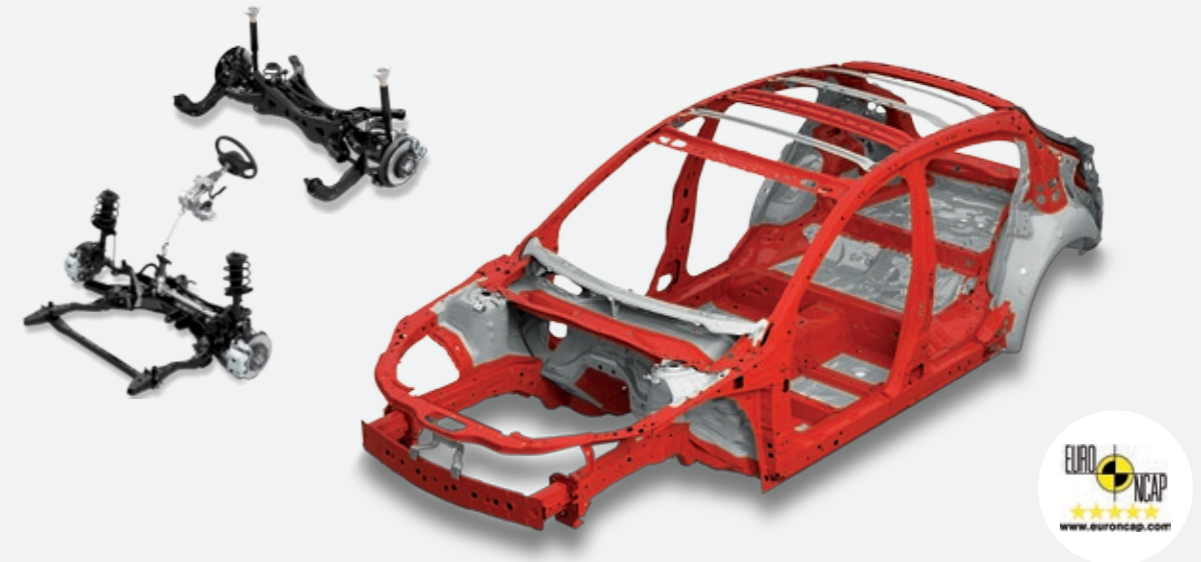


SKYACTIV

TECHNOLOGY

SKYACTIV-CHASSIS

We've re-examined every component to strengthen the sense of 'oneness' between car and driver. For nimble handling and refinement, the lightweight front strut and rear multi-link suspension uses firmer bushings and totally revised geometry. Innovative welding of the front and rear crossmembers achieves impressive stiffness with low weight. Fuel-saving, electric power-assisted steering, features a high ratio for quick handling, yet delivers great stability at all speeds.



SKYACTIV-G 2.0L PETROL ENGINE

A fundamental redesign of the internal combustion engine lifts performance while cutting fuel consumption by up to 25%. The SKYACTIV-G engine features precise, multi-hole, direct injection to minimise fuel use, while a unique piston design enhances fuel combustion – boosting power and lowering emissions. Reduced friction unlocks extra power, while a 4-2-1 exhaust layout improves efficiency. The 2.0 litre, 4-cylinder engine produces 121kW of power and 210Nm of torque, using as little as 6.1 litres of fuel every 100km.



SKYACTIV BODY

New-generation design and materials achieve amazing lightness and rigidity. The underbody's straight-frame construction runs uninterrupted through the framework to boost stiffness and save weight. Key joints are strengthened by advanced techniques that require no heavy reinforcement. The employment of high and ultra-high tensile steel cuts weight, bolsters rigidity and aids safety. We've worked tirelessly to save every gram. Despite being light, the new Mazda3 disperses crash energy in multiple directions to achieve collision performance that is world-class.



SKYACTIV DRIVE AUTOMATIC TRANSMISSION

We've combined the best aspects of conventional automatic, continuously variable and dual clutch transmissions. So you get maximum driving fun and high efficiency. The SKYACTIV-Drive transmission couples directly with the engine over a far wider range than other automatics. This delivers a significant increase in fuel economy and a more direct, manual transmission-like power delivery and driving feel. Shifts are smooth, quick and accurate across the 6-speeds.



SKYACTIV-MT MANUAL TRANSMISSION

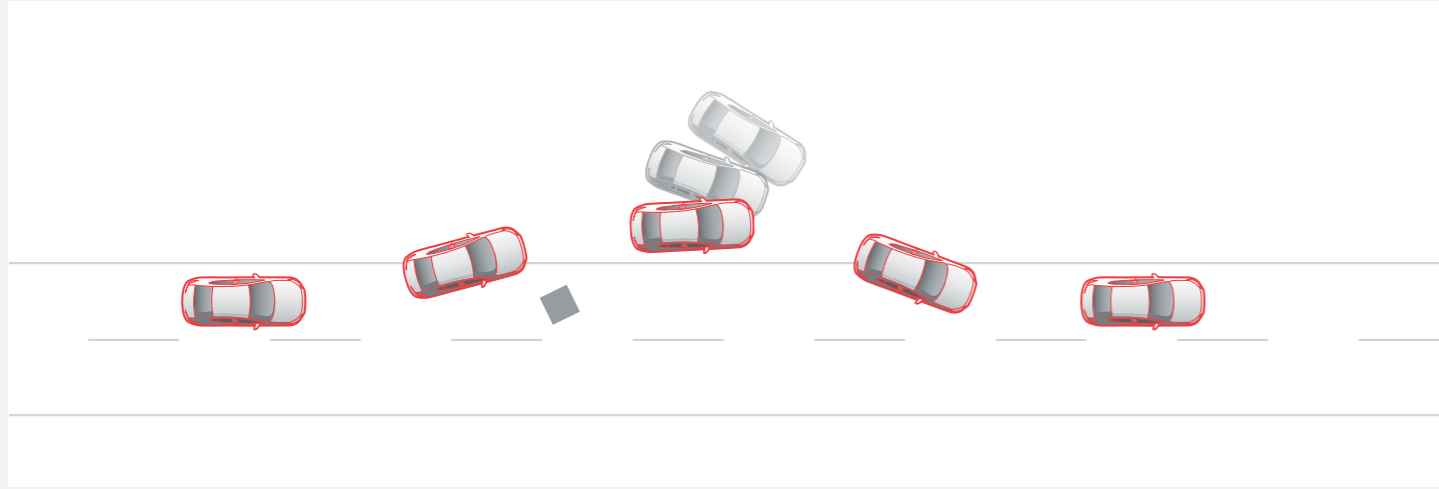
The manual transmission gives you the wrist-flicking shift-feel of a sports car, like our iconic Mazda MX-5. Simplified internal design, plus a finely honed shift mechanism, has delivered this sensation. The 6-speed SKYACTIV-MT is much more compact and also much lighter than comparable transmissions. Match this with a significant reduction in internal friction and fuel economy is much improved.

Better performance, greater fuel economy

The new Mazda3 will have drivers smiling more than ever. It dials up sports performance, yet also achieves exceptional fuel economy. This is possible because, for the first time, Mazda3 has integrated the full suit of SKYACTIV TECHNOLOGY. It's a breakthrough innovation that completely re-engineers every aspect of the vehicle to heighten performance and unleash greater efficiency. Clever features like i-Stop, available on the 2.0 litre engine, save you even more fuel by turning off the engine when you come to a halt and restarting it the instant you want to move.

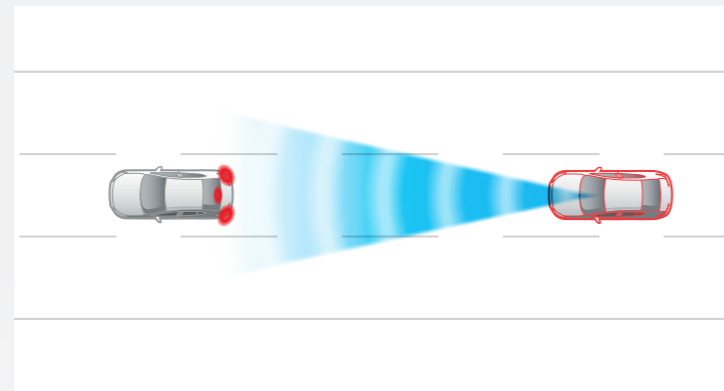
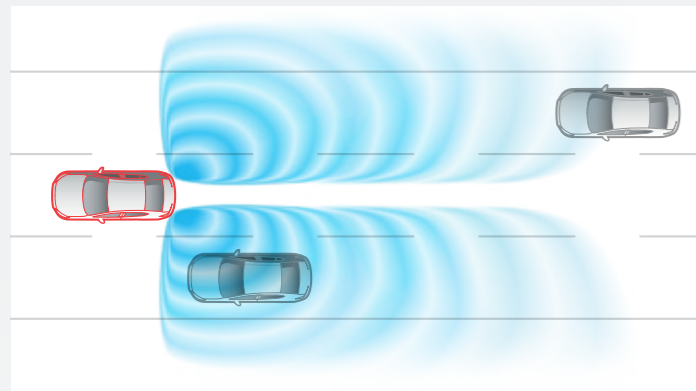
Confidence-Inspiring safety

Aside from agile responses helping you stay clear of trouble, Mazda3 comes with a suite of safety features that are primed for anything. Its light weight delivers sporty performance, yet its body is immensely strong. Multiple load paths divert crash energy from the occupant cell, helping achieve world-class collision safety. Six SRS airbags are integrated, including front, side (front) and curtain (front and rear). The latest in safety is there for you. Dynamic Stability Control (DSC) with integrated Traction Control System (TCS) is standard for the 2.0 litre models. The stopping power of four big disc brakes incorporates Anti-lock Braking System (ABS) and Electronic Brake-force Distribution (EBD), which optimises braking force according to the vehicle's load. Emergency Brake Assist (EBA) recognises urgent braking, maximising braking force right when you need it. Feel confident after braking on an incline, with Hill Launch Assist (HLA), giving you a smooth start on re-acceleration. The Emergency Stop Signal (ESS) bolsters safety by flashing the hazard lights to warn drivers behind. Mazda3 also gives you high security. Remote control locking and an engine immobiliser are standard.



Ready to help

If you ever need to react to a hazard, Mazda3 is ready. Dynamic Stability Control (DSC) acts instantly, braking the inner rear wheel to counter understeer (or outer front wheel to combat oversteer). The Traction Control System (TCS) also reduces torque to the driven wheels to minimise slip. With control maintained, the vehicle can be steered around the hazard.

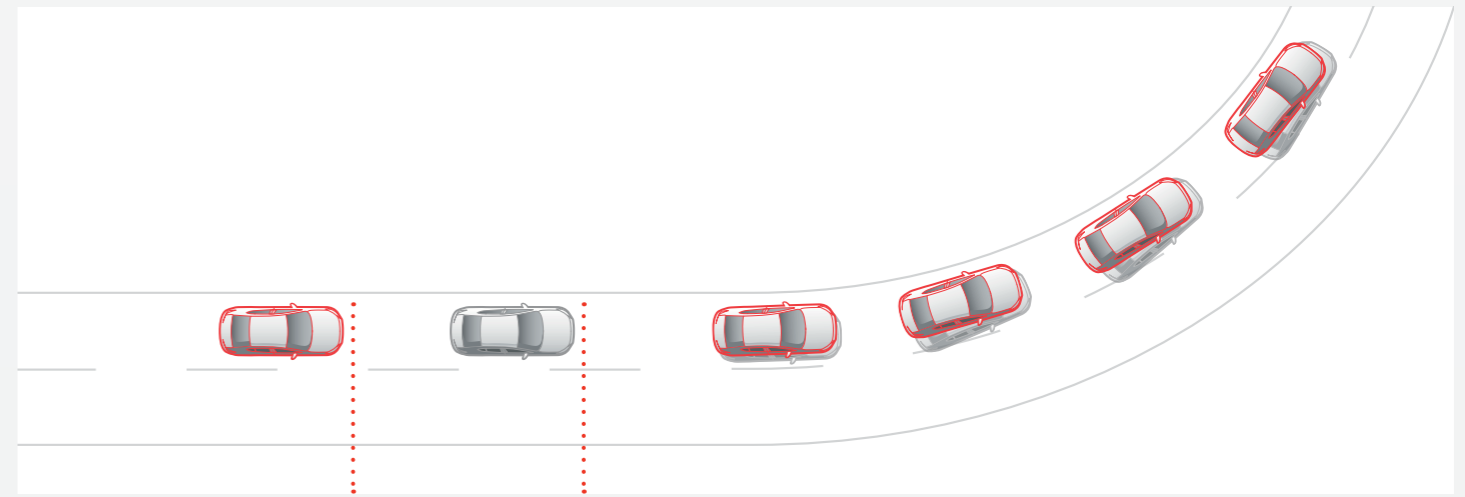


Blind Spot Monitoring (BSM)

By scanning external mirrors' blind spots, radars detect any unseen vehicles to help you avoid making hazardous lane changes. An LED icon on the relevant mirror is accompanied by beeping alerts. Available on Astina models only.

Smart City Brake Support (SCBS)

Helps prevent, or lessen, low-speed impacts. Now with pedestrian detection, Smart City Brake Support (SCBS) monitors the vehicle in front to assess the possibility of a collision at forward speeds of 4-80km/h. If the system detects a high risk of impact, it issues visual and audible warnings and primes the brakes for faster response should the driver brake. If the driver does not brake, the brakes are applied automatically. Smart City Brake Support (SCBS) also works in reverse at speeds of 2-8km/h. Standard on Astina Plus models only.

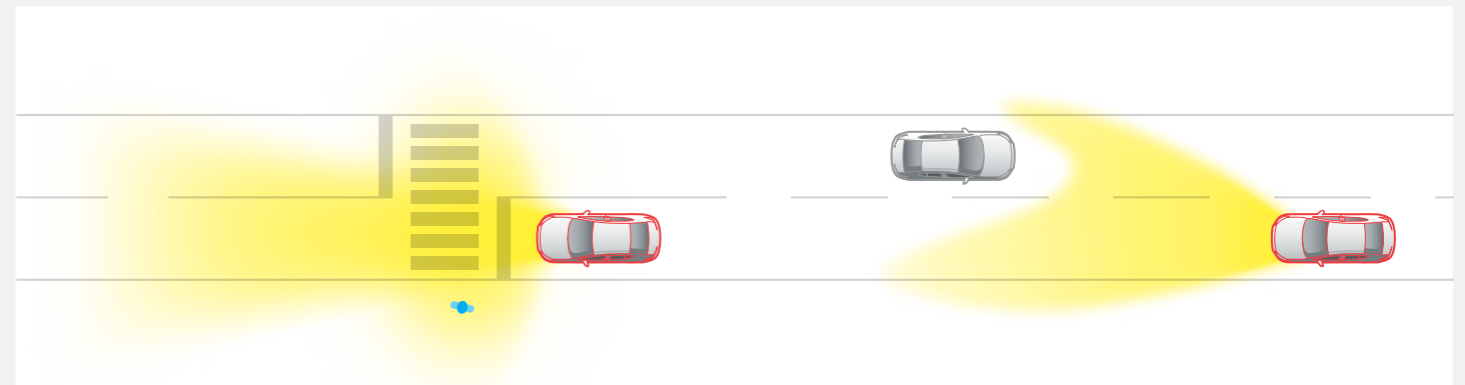


Stopping power

Stopping distance with Emergency Brake Assist (EBA), Anti-lock Braking System (ABS) and Electronic Brake-force Distribution (EBD). Stopping distance with no assistance.

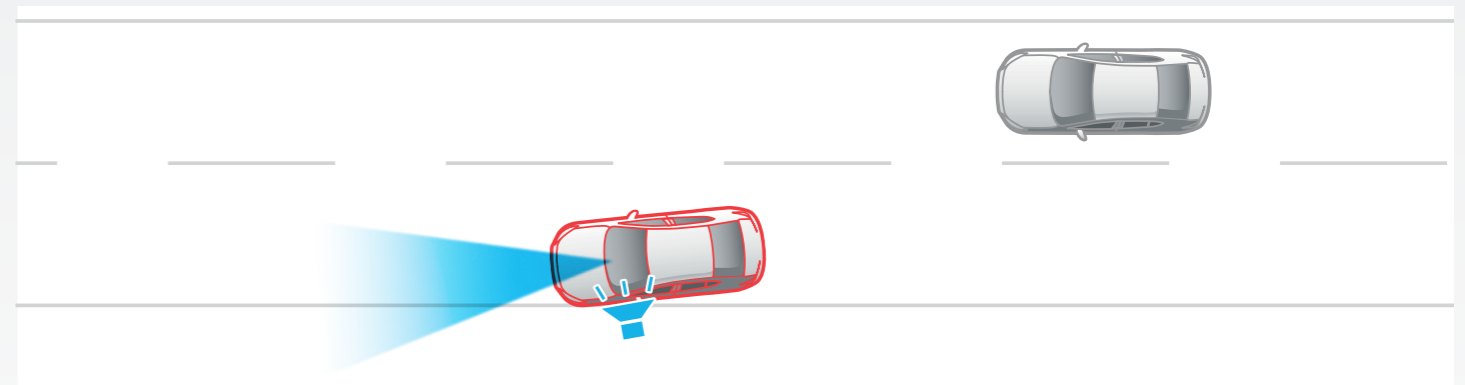
G-Vectoring Control (GVC)

The 2.0 litre SKYACTIV engine introduces G-Vectoring Control (GVC), the first innovation from the SKYACTIV-VEHICLE DYNAMICS series technology. By finely controlling engine torque, based on the steering and acceleration of the driver, G-Vectoring Control (GVC) improves both handling for the driver and ride quality for the passengers around corners.



Adaptive LED Headlights (ALH)

Individual control of several LEDs allows precise adjustment of the lighting pattern. The system automatically broadens visibility at low speeds, shapes the high beam to help avoid dazzling other drivers and raises beam height at highway speeds to extend vision area. Standard on Astina Plus model only.

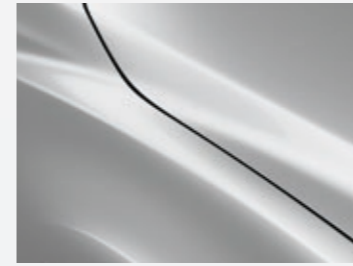


Lane Departure Warning (LDW)/Lane Keep Assist (LKA)

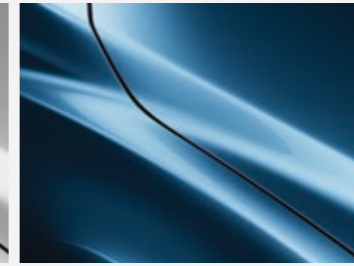
Using a windscreen-mounted camera to monitor road lane markings, Lane Departure Warning (LDW) sounds an audible warning if you're about to stray from your lane. Lane Keep Assist (LKA) will act if it determines the vehicle is going to leave its lane, by applying a degree of corrective steering. Driver Attention Alert (DAA) is also integrated. Standard on Astina Plus model only.



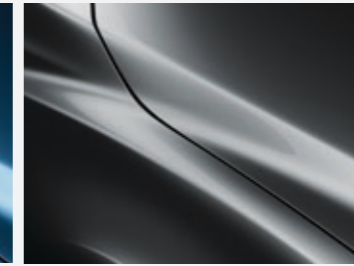
Body colours



Sonic Silver Metallic



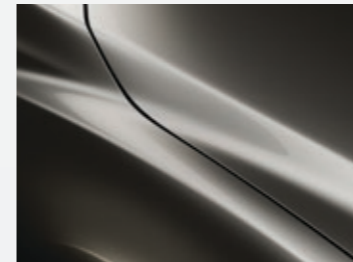
Eternal Blue Mica



Machine Grey Metallic



Snowflake White Pearl Mica



Titanium Flash Mica



Soul Red Metallic



Jet Black Mica



Deep Crystal Blue Mica

■ 3-Year ***MAZDA*** Unlimited Kilometre Warranty

Every Mazda is designed and built to the highest standards of performance and reliability. To give you further reassurance on how much we believe in our vehicles, our Mazda vehicles are backed up by a 3-year, Unlimited Kilometre Factory Warranty.

■ 3-Year ***MAZDACARE*** Unlimited Roadside Assistance

Mazda cares about offering you peace-of-mind motoring. That is why we offer a 3-year Unlimited Roadside Assistance Plan to keep you moving every minute of the year. It includes toll-free calls and services such as free towing rescue due to minor or major mishaps and emergency medical help.

■ 3-Year ***MAZDACARE*** Unlimited Kilometre Service Plan

MazdaCare has designed a Service Plan to suit your needs. It covers scheduled services for 3 years, regardless of your mileage. The service plan operates alongside the Mazda Unlimited Kilometre Warranty.

SPECIFICATIONS

Mazda3 Sedan/Hatchback	1.6 Original	1.6 Active	1.6 Dynamic	1.6 Dynamic Auto	2.0 Individual	2.0 Individual Auto	2.0 Astina Auto	2.0 Astina Plus Auto
Powertrain								
Engine type	1.6 litre in-line 4-cylinder 16-valve DOHC S-VT petrol	1.6 litre in-line 4-cylinder 16-valve DOHC S-VT petrol	1.6 litre in-line 4-cylinder 16-valve DOHC S-VT petrol	1.6 litre in-line 4-cylinder 16-valve DOHC S-VT petrol	2.0 litre in-line 4-cylinder 16-valve DOHC S-VT petrol (SKYACTIV-G) with i-stop	2.0 litre in-line 4-cylinder 16-valve DOHC S-VT petrol (SKYACTIV-G) with i-stop	2.0 litre in-line 4-cylinder 16-valve DOHC S-VT petrol (SKYACTIV-G) with i-stop	2.0 litre in-line 4-cylinder 16-valve DOHC S-VT petrol (SKYACTIV-G) with i-stop
Bore and stroke	78.0x83.6	78.0x83.6	78.0x83.6	78.0x83.6	83.5x91.2	83.5x91.2	83.5x91.2	83.5x91.2
Compression Ratio	10.0	10.0	10.0	10.0	14.0	14.0	14.0	14.0
Engine Capacity (cc)	1 598	1 598	1 598	1 598	1 998	1 998	1 998	1 998
Drive	2WD	2WD	2WD	2WD	2WD	2WD	2WD	2WD
Transmission	5MT	5MT	5MT	4AT	6MT	6AT	6AT	6AT
Power (kW @ rpm)	77/6000	77/6000	77/6000	77/6000	121/6000	121/6000	121/6000	121/6000
Torque (Nm @ rpm)	144/4000	144/4000	144/4000	144/4000	210/4000	210/4000	210/4000	210/4000
Performance (0 – 100 sec)	12.8/13.0	12.8/13.0	12.8/13.0	13.5/13.6	8.2/8.3	8.9/9.0	8.9/9.0	8.9/9.0
CO ₂ emissions (g/km)	147/142	147/142	147/142	164/159	146/145	140/139	140/139	140/139
Emissions standard	Euro stage IV	Euro stage IV	Euro stage IV	Euro stage IV	Euro stage IV	Euro stage IV	Euro stage IV	Euro stage IV
Fuel consumption - combined (litres/100km)	6.2/6.0	6.2/6.0	6.2/6.0	6.9/6.7	6.2/6.1	5.9/5.8	5.9/5.8	5.9/5.8
Fuel tank capacity (L)	51	51	51	51	51	51	51	51
Transmission								
Type	5-speed manual	5-speed manual	5-Speed manual	4-Speed auto	6-speed manual	6-Speed auto	6-Speed auto	6-Speed auto
Gear Ratio 1 st	3.416	3.416	3.416	2.816	3.363	3.552	3.552	3.552
Gear Ratio 2 nd	1.842	1.842	1.842	1.553	1.947	2.022	2.022	2.022
Gear Ratio 3 rd	1.218	1.218	1.218	1.000	1.300	1.452	1.452	1.452
Gear Ratio 4 th	0.918	0.918	0.918	0.695	1.029	1.000	1.000	1.000
Gear Ratio 5 th	0.731	0.731	0.731	-	0.837	0.708	0.708	0.708
Gear Ratio 6 th	-	-	-	-	0.680	0.599	0.599	0.599
Reverse	3.214	3.214	3.214	2.279	3.385	3.893	3.893	3.893
Final drive	4.388	4.388	4.388	4.147	4.388	3.812	3.812	3.812
Chassis								
Suspension type - front	Macpherson strut	Macpherson strut	Macpherson strut	Macpherson strut	Macpherson strut	Macpherson strut	Macpherson strut	Macpherson strut
Suspension type - rear	Multi-link	Multi-link	Multi-link	Multi-link	Multi-link	Multi-link	Multi-link	Multi-link
Brake type - front	Ventilated disc	Ventilated disc	Ventilated disc	Ventilated disc	Ventilated disc	Ventilated disc	Ventilated disc	Ventilated disc
Brake type - rear	Solid disc	Solid disc	Solid disc	Solid disc	Solid disc	Solid disc	Solid disc	Solid disc
Diameter - front	280	280	280	280	295	295	295	295
Diameter - rear	265	265	265	265	265	265	265	265
Electronic Power Assist Steering	Std	Std	Std	Std	Std	Std	Std	Std
Turning Circle Curb to Curb	5.3	5.3	5.3	5.3	5.3	5.3	5.3	5.3
Wheels and tyres								
Steel Wheels	Std	-	-	-	-	-	-	-
Alloy Wheels	-	Std	Std	Std	Std	Std	Std	Std
Tyre Size	205/60 R16	205/60 R16	205/60 R16	205/60 R16	205/60 R16	205/60 R16	215/45 R18	215/45 R18
Wheel Size	16X6.5J	16X6.5J	16X6.5J	16X6.5J	16X6.5J	16X6.5J	18X7J	18X7J
Tyre Size (spare)	16x4T	16x4T	16x4T	16x4T	16x4T	16x4T	16x4T	16x4T
Weights and capacities								
Gross Vehicle Mass (kg)	1745	1745	1745	1790	1830	1860	1860	1860
Towing mass (kg) braked	900	900	900	-	1200	1200	1200	1200
Towing mass (kg) unbraked	600	600	600	-	600	600	600	600
Luggage volume (L)	408/308	408/308	408/308	408/308	408/308	408/308	408/308	408/308
Exterior dimensions (mm)								
Length	4585/4465	4585/4465	4585/4465	4585/4465	4585/4465	4585/4465	4585/4465	4585/4465
Width	1795	1795	1795	1795	1795	1795	1795	1795
Height	1450	1450	1450	1450	1450	1450	1450	1450
Wheelbase	2700	2700	2700	2700	2700	2700	2700	2700
Front track	1555	1555	1555	1555	1555	1555	1555	1555
Rear track	1560	1560	1560	1560	1560	1560	1560	1560
Front overhang	925	925	925	925	925	925	925	925
Rear overhang	835	835	835	835	835	835	835	835
Exterior								
Headlamps (Halogen)	Std	Std	Std	Std	Std	Std	Std	Std
Headlamps Auto on/off	-	-	Std	Std	Std	Std	Std	Std
Front fog lamps (LED)	-	Std	Std	Std	Std	Std	Std	Std
Adaptive LED Headlamps	-	-	-	-	-	-	-	Std
Daytime Running Lights	-	-	-	-	-	-	-	Std
Power sliding and tilt glass sunroof	-	-	-	-	Std	Std	Std	Std
Power windows	Std	Std	Std	Std	Std	Std	Std	Std
Power fold mirrors	-	-	Std	Std	Std	Std	Std	Std
Roof spoiler with high mounted stop lamp	-	-	-	-	-/Std	-/Std	-/Std	-/Std
Rear spoiler	-	-	Std/-	Std/-	Std/-	Std/-	Std/-	Std/-
Interior								
Air conditioning	Std	Std	Std	Std	Std	Std	-	-
Air conditioning (dual-zone climate control)	-	-	-	-	-	-	Std	Std
Ambient temperature display	Std	Std	Std	Std	Std	Std	Std	Std
Cargo area tonneau cover	-/Std	-/Std	-/Std	-/Std	-/Std	-/Std	-/Std	-/Std
Cruise control	-	-	-	-	Std	Std	Std	Std
Head-Up Display	-	-	-	-	-	-	Std	Std

*Under Mazda test conditions.

Mazda3 Sedan/Hatchback	1.6 Original	1.6 Active	1.6 Dynamic	1.6 Dynamic Auto	2.0 Individual	2.0 Individual Auto	2.0 Astina Auto	2.0 Astina Plus Auto
Interior (continued)								
Door pockets - front and rear	Std	Std	Std	Std	Std	Std	Std	Std
Instrument panel light dimmer	Std	Std	Std	Std	Std	Std	Std	Std
Interior illumination: cargo room lamp	Std	Std	Std	Std	Std	Std	Std	Std
Map reading spot lamps	-	Std	Std	Std	Std	Std	Std	Std
Leather-wrapped gear shift knob	-	-	Std	Std	Std	Std	Std	Std
Leather-wrapped handbrake handle	-	-	Std	Std	Std	Std	Std	Std
Leather-wrapped steering wheel	-	-	Std	Std	Std	Std	Std	Std
Overhead sunglasses storage box	-	Std	Std	Std	Std	Std	Std	Std
Power lumbar support (driver side)	-	-	-	-	-	-	Std	Std
Rear-view mirror with auto dimming function	-	-	Std	Std	Std	Std	Std	Std
Seat trim - cloth	Std	Std	-	-	-	-	-	-
Seat trim - leather	-	-	Std	Std	Std	Std	Std	Std
Seat - rear folding (60:40)	-/Std	Std	Std	Std	Std	Std	Std	Std
Seat with 8-way power adjustment (driver)	-	-	-	-	-	-	Std	Std
Smart advanced keyless entry	-	-	-	-	Std	Std	Std	Std
Smart keyless push-button engine start	Std	Std	Std	Std	Std	Std	Std	Std
Tachometer	Digital	Digital	Digital	Digital	Digital	Digital	Analog	Analog
Electronic odometer/tripmeter	Std	Std	Std	Std	Std	Std	Std	Std
Tilt and telescopic adjustable steering wheel	Std	Std	Std	Std	Std	Std	Std	Std
Trip computer	Std	Std	Std	Std	Std	Std	Std	Std
Vanity mirrors (front) with illumination	-	Std	Std	Std	Std	Std	Std	Std
Window one touch system (driver)	Std	Std	Std	Std	Std	Std	Std	Std
Wipers front - rain-sensing function	-	-	Std	Std	Std	Std	Std	Std
Wiper rear with intermittent function	Std	Std	Std	Std	Std	Std	Std	Std
Audio								
Compact display screen	Std	-	-	-	-	-	-	-
MZD Connect system with commander system	-	Std	Std	Std	Std	Std	Std	Std
Audio control on steering wheel	Std	Std	Std	Std	Std	Std	Std	Std
Bluetooth® hands free system	Std	Std	Std	Std	Std	Std	Std	Std
Integrated navigation	-	Opt	Opt	Opt	Opt	Opt	Std	Std
BOSE® Speaker type	-	-	-	-	-	-	Std	Std
Radio/CD/AUX jack/USB	Std	Std	Std	Std	Std	Std	Std	Std
Speaker quantity	4	6	6	6	6	6	9	9
Safety and security								
Airbags SRS: driver, passenger, side and curtain	Std	Std	Std	Std	Std	Std	Std	Std
Anti-lock Braking System (ABS)	Std	Std	Std	Std	Std	Std	Std	Std
Burglar alarm system	Std	Std	Std	Std	Std	Std	Std	Std
Child restraint anchor points	Std	Std	Std	Std	Std	Std	Std	Std
Dynamic Stability Control (DSC)	-	-	-	-	Std	Std	Std	Std
Electronic Brake-force Distribution (EBD)	Std	Std	Std	Std	Std	Std	Std	Std
Emergency Brake Assist (EBA)	Std	Std	Std	Std	Std	Std	Std	Std
Engine immobiliser	Std	Std	Std	Std	Std	Std	Std	Std
High mount stop lamp	Std	Std	Std	Std	Std	Std	Std	Std
Hill Launch Assist (HLA)	-	-	-	-	Std	Std	Std	Std
Blind Spot Monitoring (BSM)	-	-	-	-	-	-	Std	Std
Lane Keep Assist (LKA)	-	-	-	-	-	-	-	Std
Lane Departure Warning (LDW)	-	-	-	-	-	-	-	Std
Smart City Brake System (SCBS) (front and rear)	-	-	-	-	-	-	-	Std
Driver Attention Alert (DAA)	-	-	-	-	-	-	-	Std
Parking sensors (rear)	-	-	-	-	-	-	Std	Std
Remote central locking (2 transmitters)	Std	Std	Std	Std	Std	Std	Std	Std
Seat-belt warning (driver)	Std	Std	Std	Std	Std	Std	Std	Std
Seat-belts 3-point lap-sash (all seats)	Std	Std	Std	Std	Std	Std	Std	Std
Seat-belts (front) with pretensioners, load-limiters and height adjustable shoulder anchorages	Std	Std	Std	Std	Std	Std	Std	Std
Side impact door beams	Std	Std	Std	Std	Std	Std	Std	Std
Super Lock System	Std	Std	Std	Std	Std	Std	Std	Std
MazdaCare								
Service Plan	3 Year/Unlimited km	3 Year/Unlimited km	3 Year/Unlimited km	3 Year/Unlimited km	3 Year/Unlimited km	3 Year/Unlimited km	3 Year/Unlimited km	3 Year/Unlimited km
Service intervals	15000km	15000km	15000km	15000km	15000km	15000km	15000km	15000km
Warranty	3 Year/Unlimited km	3 Year/Unlimited km	3 Year/Unlimited km	3 Year/Unlimited km	3 Year/Unlimited km	3 Year/Unlimited km	3 Year/Unlimited km	3 Year/Unlimited km
Roadside Assistance	3 Year/Unlimited km	3 Year/Unlimited km	3 Year/Unlimited km	3 Years/Unlimited km	3 Year/Unlimited km	3 Year/Unlimited km	3 Year/Unlimited km	3 Year/Unlimited km







mazda

ZOOM-ZOOM



3
YEAR
UNLIMITED KM
WARRANTY &
SERVICE PLAN

mazda.co.za     | The impossible made possible.

MAZDA 3