


07 **mazda 6**




zoom-zoom



It all comes back to *you.*



Bored to tears by today's hopelessly bland sedans? Then test-drive a new MAZDA6. Any MAZDA6. Because only MAZDA6 offers so many distinct and compelling ways to arrive at true sports sedan performance—from the stylish MAZDA6 Sports Sedan and sophisticated MAZDA6 Sport Wagon to the versatile MAZDA6 5-Door and mind-blowing 270-hp, AWD MAZDASPEED6. Which translates into getting more of what you want. More of what you need. And of course, more Zoom-Zoom. Because no matter which MAZDA6 you choose, you'll get a seriously responsive performer. With spirited acceleration, quick reflexes and sure-footed handling. You'll also get a direct descendent of such legendary vehicles as the revolutionary Mazda RX-7, the original Mazda MX-5 Miata and the Mazda 787B, the first and only Japanese entry to ever win the historic 24 Hours of Le Mans. So put yourself behind the wheel of a MAZDA6. And see if a sports sedan specifically engineered to be more athletic, more fun to drive and more inspiring isn't also more you.



It's all about  
purity of purpose.

To date, the MAZDA6 has garnered more than 100 awards from the global automotive press. As well as "Best in Class" honors, three years in a row, based upon annual new-vehicle satisfaction studies conducted by AutoPacific.\* And for good reason. Everything about a MAZDA6 supports its performance-oriented, road-taming intentions. Note its taut, athletic profile. And how its sophisticated, 4-wheel independent suspension transforms each of your intentions into exuberant action. Admire how both all-aluminum MAZDA6 engines make expert use of variable valve timing to optimize performance across the entire powerband. And how easily its well-crafted cabin can entertain as many as five occupants with its well-balanced ride dynamics. Enjoy the kind of pure, exhilarating performance that rewards you for taking the long way home. And experience what inspired *Edmunds.com* to report: "...the 6 offers an exciting ride, a substantial interior and a solid value. A star is born..."

\* Standard midsize car, 2003-2005 MAZDA6 ©AutoPacific, Inc.





It's all about  
**forward thinking.**



Leave it to Mazda's forward-thinking designers to engineer a vehicle that's fun to drive, fuel-responsible and virtually as practical as some SUVs. In all three of these areas, the MAZDA6 Sport Wagon serves up some truly impressive credentials. Crave performance and efficiency? A powerful 3.0-liter DOHC V6 and a 6-speed Sport AT automatic with manual shift mode are both standard. As are a fully independent, sport-tuned suspension; Traction Control System; dual exhaust outlets; and even handsome alloy wheels. Step up to the Grand Touring model, and fog lamps, HID headlights, 18-inch alloys plus a 200-watt Bose® audio system also come along for the ride. On the practical side, with its rear seatback folded, the MAZDA6 Sport Wagon serves up a cavernous 60.5 cu ft of flexible cargo space. And all without the bland styling, fuel-thirsty habits and clumsy handling typical of SUVs. In fact, its unique fusion of fun, efficiency and functionality lead the auto experts at *Edmunds.com* to conclude: "...the Mazda6 Sport Wagon is a powerful and nimble car that can be driven aggressively while still offering the practicality and space of a large family car."

Please remember to properly secure all cargo.



Pulling one or both of the two remote control levers inside the liftgate automatically activates the 60/40 split fold-down rear seatback's handy "fold-flat" feature, moves the rear seat bottom forward and creates a virtually flat load floor. With its rear seatback in the upright position, the MAZDA6 5-Door offers seating for three adults plus a surprising 22.1 cu ft of cargo space behind the seatback.\*

\* Please remember to properly secure all cargo. We recommend use of the optional cargo net.

Breaking with the constraints of traditional sports sedans, the MAZDA6 5-Door provides an ingenious blend of performance and versatility. The secrets to its success? A choice of two potent powerplants and no less than three transmissions. Aggressive aero styling cues, side sill extensions, a racy rear spoiler, alloy wheels and dual exhaust outlets that visually telegraph its performance-minded mission. Plus a nearly undetectable rear liftgate that's stylishly integrated into MAZDA6 5-Door's sleek and sporty profile. And all designed to let you enjoy true sports-sedan performance on your own terms. Even parked, it begs to be opened up—simply lower the "automatic fold-flat" rear seatback, and you're looking at an expansive 58.7 cu ft of cargo bay that's ready to swallow up everything from sports gear and luggage to furniture. Tired of feeling boxed in by tradition? Then check out the "smooth lines" and "stealthily hidden rear door" that caused *Edmunds.com* to praise the MAZDA6 5-Door as "...sort of like the automotive equivalent of Superman."

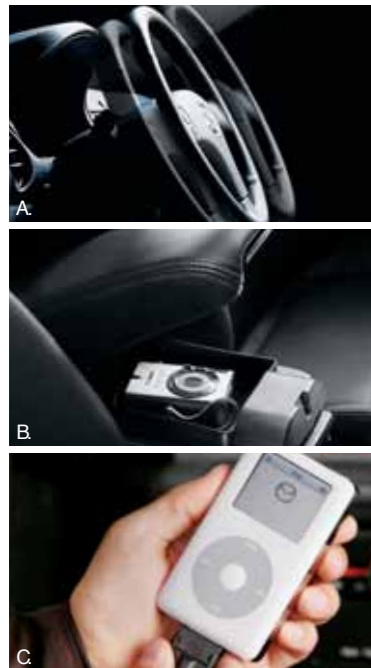
It's all about  
raising expectations.





It's all about  
putting you in control.

A driver-centric cockpit is one of the most compelling features shared by every MAZDA6. Crafted to be as confidence-inspiring as it is spacious and comfortable, you'll feel instantly right at home. Even its standard remote keyless entry system—featuring locking/unlocking and front-window operation—provides a preview to other insightful amenities. Inside, all models (except the / Sport) feature an 8-way power driver's seat and a leather-wrapped steering wheel, gearshift knob and parking-brake handle to more warmly welcome your grip. The instrument cluster is perfectly positioned, easy to read and available with electroluminescent gauges (Grand Touring). And there are steering-wheel-mounted controls for both the AM/FM/CD stereo and cruise control to help minimize driver distractions. Even the console screen display promotes quick and clear communication. Popular options include an available SIRIUS Satellite Radio receiver\* and available DVD-based navigation system on Grand Touring models. After all, we want the time you spend behind the wheel of your MAZDA6 to be as rewarding as possible.



A. Every MAZDA6 features a steering wheel with tilt and telescoping functions to help ensure a more comfortable driving position and better vehicle control. Convenient steering-wheel-mounted controls for both the audio and cruise-control systems are also standard. B. Lifting the center console armrest reveals dual storage compartments. C. An available Mazda iPod® Integration Module allows you to play any Apple® iPod with a bottom dock connector through your MAZDA6 audio system. You'll enjoy CD-quality sound, the use of both radio and steering-wheel audio controls plus a continuously charged iPod. (iPod not included. See dealer for compatibility conditions and limitations on installation.)

Apple® and iPod® are registered trademarks of Apple Computer, Inc.



**SIRIUS**  
SATELLITE RADIO requires a subscription and Mazda satellite radio receiver accessory kit. Available only in the U.S., except Alaska and Hawaii.

It's all about  
a passion for performance.



A. The MAZDA6 Sports Sedan and 5-Door offer a choice of two advanced, all-aluminum powerplants: A potent 212-hp 3.0-liter DOHC 24-valve V6, which is standard on the MAZDA6 Sport Wagon, and a spirited 156-hp\* 2.3-liter DOHC 16-valve inline 4. Both engines feature variable valve timing to optimize their performance across the entire powerband. B. All MAZDA6 models, except the Sport Wagon and MAZDA6 SPEED6, come standard with a close-ratio 5-speed manual gearbox. For added convenience and fun, an electronically controlled Sport AT automatic with a manual shift mode is also available (and standard on the Sport Wagon). A 6-speed manual transmission is standard on the MAZDA6 SPEED6.

\*146 hp for automatic transmission-equipped vehicles in CA, MA, ME, NY and VT.



MAZDA6 flies in the face of today's ubiquitous, bland and boring family sedans. With an inspired family of models passionately engineered to provide spirited performance. Crisp, agile handling. And undiluted exhilaration. Which is why most MAZDA6 models afford you the choice of either a potent V6 or a responsive, yet fuel-efficient, 4-cylinder. And why every MAZDA6 boasts a double-wishbone front suspension plus a sophisticated multilink rear suspension to promote confident, surefooted handling. Not to mention an engine-speed-sensing rack-and-pinion steering system for precise control and superb on-center feel. Naturally, a Traction Control System plus 4-wheel disc brakes with ABS and Electronic Brakeforce Distribution are also standard on every MAZDA6. No wonder *Edmunds.com* raved: "Overall, driving the car is a blast... credit for this goes to its superior blend of steering, brakes, suspension and driver comfort."



It's all about  
taking value to a brand-new place.

Brand-new for 2007, the Sport Value Edition makes its debut across all three MAZDA6 body styles—the Sports Sedan, Sport Wagon and 5-Door—and in both *i* (4-cylinder) and *s* (6-cylinder) versions. As the name implies, each Sport Value Edition serves up a compelling array of exterior and interior upgrades for an equally compelling price. Exterior enhancements include a sport grille, side sill extensions and 17-inch alloy wheels. Interior enhancements include an 8-way power driver's seat, in-dash 6-disc CD changer plus a leather-wrapped steering wheel, shift knob and parking-brake handle. No matter how you look at it, the new MAZDA6 Sport Value Editions will help your new-car budget go further than you ever imagined.



## It's all about sweating the details.

At Mazda, we believe that exemplary quality and craftsmanship are also essential to an exhilarating ownership experience. Which is why, wherever your eye comes to rest on a MAZDA6, it is certain to be richly rewarded. Survey the overall fit and finish of its stylish exterior, for example, and you'll find that a uniform space of about 1.5 mm is all that separates headlamp from bumper. Equally meticulous attention to detail is also lavished upon the MAZDA6 cabin. Which explains why things like richly textured surfaces, ergonomically pleasing controls, exquisitely precise stitching and even an eight-way adjustable driver's seat (on most models) are all the norm. And why, to help prevent annoying rattles and squeaks, Mazda engineers created a one-piece instrument panel and command center assembly. After all, the difference really is in details.





Designed into every MAZDA6, you'll find the kind of comprehensive occupant protection and safety engineering features that provide true peace of mind. To help give you extra control in less than ideal driving conditions, a Traction Control System is standard on every MAZDA6—as are 3-point safety belts for all five occupants plus front-seat head restraints with a whiplash-reducing design. Equally important, Mazda's "Triple H" construction adds extra steel reinforcements to critical body areas, enhancing the vehicle's structural integrity, handling capability and impact protection. In the event of a collision, integral front and rear crumple zones help absorb the energy and provide enhanced occupant protection. Strategically placed side-impact door beams also help absorb energy and reduce cabin intrusion. All of which explain why MAZDA6 Sports Sedan earned Five Stars—the highest rating possible—in frontal crash tests for driver and front-seat passenger conducted by the National Highway Traffic Safety Administration (NHTSA).\* In short, from top to bottom, we've got your back.

\* Government star ratings are part of NHTSA's New Car Assessment Program (NCAP). For complete test results, visit [www.nhtsa.dot.gov](http://www.nhtsa.dot.gov).



A. For added peace of mind, Advanced dual front air bags\* are standard on all MAZDA6 models. Side-curtain air bags (with coverage for front and rear seats) and front side-impact air bags\* are also standard on all MAZDA6 models. B. For consistently predictable stopping power, power-assisted 4-wheel disc brakes are standard on all MAZDA6 models and include an Anti-lock Brake System (ABS) with Electronic Brakeforce Distribution (EBD). C. To help minimize the chance of a serious ankle or leg injury, the MAZDA6 brake pedal assembly is specially engineered to fold away in the event of an accident.

\* Always wear your safety belt and secure children in the rear seat.

It's all about  
making safety a priority.



It's all about  
looking like nothing else on the road.



It's all about a **higher level**  
of high performance.



When your middle name is "Speed," lofty expectations come with the territory. So the *MAZDASPEED6*<sup>®</sup> was engineered to exceed them. With an advanced turbocharged and intercooled powerplant that ingeniously uses Direct-Injection Spark Ignition (DISI) technology to generate an impressive 270 horsepower. With a standard 6-speed manual gearbox that instantly responds to your "hands-on" input with exhilarating precision. And with a computer-controlled, Active Torque Split All-Wheel-Drive system that ensures all that raw power is intelligently harnessed. The adrenaline-generating result is far more than simply the fastest-accelerating, best-handling and most advanced Sports Sedan Mazda has ever engineered. It's also the most refined Sports Sedan we've ever offered. Boasting no less than 120 specific body and suspension enhancements. Fifty percent greater torsional rigidity. Even a water-cooled power transfer differential. Its interior refinements also raise the bar—encompassing everything from automatic climate control to drilled aluminum foot pedals. So what's in a name? When it comes to the *MAZDASPEED6*, everything.

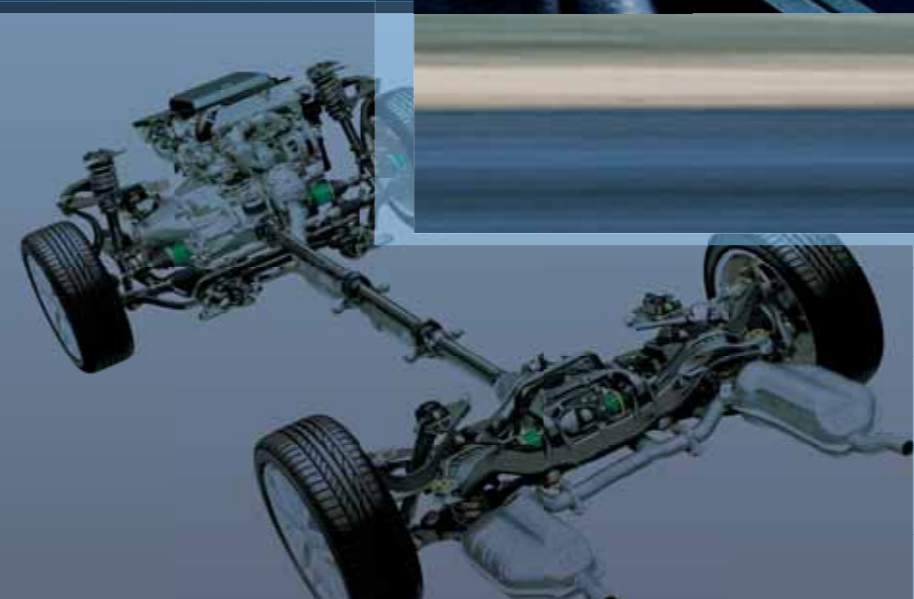
\* Available only at authorized MAZDASPEED dealers.

**MAZDASPEED 6**



To foster an extraordinary balance of responsive power, tenacious handling, refined ride dynamics and sheer driving pleasure, every *MAZDASPEED6* is equipped with notable standard features that include:

- A turbocharged 270-hp direct-injected engine • A 6-speed manual gearbox and limited-slip rear differential • Active Torque Split All-Wheel Drive • Dynamic Stability Control (DSC) • 4-wheel disc brakes with massive 12-inch rotors
- An Anti-lock Brake System (ABS) with Electronic Brakeforce Distribution (EBD)
- An Integral Traction Control System (TCS) • Stunning 18-inch alloy wheels
- A remote keyless entry system • A 200-watt Bose® sound system with an in-dash 6-disc CD changer • Electroluminescent gauges • Automatic climate control • Cruise control • Leather-wrapped tilt/telescopic steering wheel
- Drilled alloy foot pedals and stainless steel scuff plates



It all comes back to

# Zoom-Zoom



On any given weekend, there are more Mazdas competing on the roadrace tracks of America than any other brand.\* And for good reason. Mazda's passion for motorsports spans decades. Fact is, competition is an integral part of our heritage. And racing is in our bloodlines. Case in point, MAZDA6 entries have already racked up four impressive wins as well as at least a dozen other podium finishes in just their first two seasons of competition in the SCCA SPEED World Challenge Touring Car Championship series. Equally impressive, these intrepid MAZDA6 racers typically have to outrun a field of other world-class sports sedans from the likes of Acura, Audi, BMW, Lexus and even Mercedes-Benz. But then, Mazda has always been about competing. Improving. Refining. And, of course, Zoom-Zoom. It's this undiluted passion that inspires us to engineer "the soul of a sports car" into every Mazda we make. It's this spirit of competition that separates the MAZDA6 from ordinary sedans. And ultimately, it's what attracts so many discerning sports-sedan buyers to join us in racing to put an end to the boring sedan.

\* Based on Sports Car Club of America racing data.





**mazda6**  
SPORTS SEDAN

**MAZDA6 SPORTS SEDAN SPECIFICATIONS**

SPECIFICATIONS	MAZDA6i	MAZDA6s
Engine size and type	2.3L DOHC 16-valve 4-cylinder with variable valve timing	3.0L DOHC 24-valve V6 with variable valve timing
Horsepower, SAE net	156* @ 6500 rpm	212 @ 6000 rpm
Torque, SAE net lb-ft	154* @ 4000 rpm	197 @ 5000 rpm
Compression ratio	9.7:1	10.0:1
Ignition system	Fully transistorized breakerless electronic	Fully transistorized breakerless electronic
Fuel system	Multipoint electronic fuel injection	Multipoint electronic fuel injection
Fuel requirement	Unleaded regular gasoline	Unleaded regular gasoline
Fuel economy (EPA estimated mpg)	Manual 24 city/32 hwy Automatic 24 city/31 hwy	Manual 19 city/27 hwy Automatic 20 city/27 hwy
Curb weight (lb)	Manual 3091 Automatic 3166	Manual 3320 Automatic 3378
<b>EXTERIOR DIMENSIONS</b>		
Wheelbase/overall length (in)	105.3/186.8	105.3/186.8
Overall width/overall height (in)	70.1/56.7	70.1/56.7
Track, front/rear (in)	60.6/60.2	60.2/60.2
Turning circle, curb-to-curb (ft)	38.7	38.7
<b>INTERIOR DIMENSIONS (front/rear)</b>		
Headroom (in)	38.7/37.1	38.7/37.1
Headroom with moonroof (in)	38.0/37.1	38.0/37.1
Legroom (in)	42.3/36.5	42.3/36.5
Shoulder room (in)	55.9/55.2	55.9/55.2
<b>CAPACITIES</b>		
Passenger volume (cu ft)	96.1	96.1
Cargo volume (cu ft)	15.2	15.2
Fuel capacity (U.S. gallons)	18.0	18.0

**MAZDA6 SPORTS SEDAN MECHANICAL FEATURES**

STANDARD EXTERIOR FEATURES	MAZDA6i and MAZDA6s			
	MAZDA6i Sport	MAZDA6i Sport Value Edition	MAZDA6i Touring	MAZDA6i Grand Touring
2.3L DOHC MZR 16-valve 4-cylinder engine	MAZDA6i	MAZDA6i	MAZDA6i	MAZDA6i
3.0L DOHC MZJ 24-valve V6 engine	—	MAZDA6s	MAZDA6s	MAZDA6s
5-speed manual overdrive transmission	S	S	S	S
5-speed Sport AT automatic transmission (MAZDA6i)	(Available)	(Available)	(Available)	(Available)
6-speed Sport AT automatic transmission (MAZDA6s)	(Available)	(Available)	(Available)	(Available)
Power-assisted rack-and-pinion steering with engine-speed-sensing variable power assist	S	S	S	S
Power-assisted 4-wheel disc brakes	S	S	S	S
Anti-lock Brake System (ABS) with Electronic Brakeforce Distribution (EBD)	S	S	S	S
Traction Control System (TCS)	S	S	S	S
Double wishbone front suspension with stabilizer bar	S	S	S	S
E-type multilink rear suspension with stabilizer bar	S	S	S	S

**WHEELS**



18-INCH ALLOY



17-INCH ALLOY



16-INCH WHEEL WITH COVER

S Standard O Optional A Dealer-installed accessory --: Not available

\* 146 hp and 149 lb-ft for automatic transmission-equipped vehicles in CA, MA, ME, NY and VT.

† 60.2/60.2 with alloy wheels. ‡ Always wear your safety belt and secure children in the rear seat.

**MazdaUSA.com**

Wherever you see this symbol, you can get the whole story on our interactive Web site.

**MAZDA6 SPORTS SEDAN EQUIPMENT & FEATURES**

STANDARD EXTERIOR FEATURES	MAZDA6i	MAZDA6i and MAZDA6s		
	Sport	Sport Value Edition	Touring	Grand Touring
16-inch steel wheels with full wheel covers with P205/60R16 all-season radial tires	S	—	—	—
17-inch alloy wheels with P215/50R17 all-season radial tires	—	S	S	S (MAZDA6i)
18-inch alloy wheels with P215/45R18 all-season radial tires	—	—	—	S (MAZDA6s)
Dual body-color power remote outside mirrors (heated on Touring and Grand Touring)	S	S	S	S
Power sliding-glass moonroof with interior sunshade	—	—	S	S
Clear-lens halogen headlights with automatic shutoff	S	S	S	—
High-Intensity-Discharge (HID) low-beam headlights	—	—	—	S
Smoke-tint headlight lenses	—	S	S	S
Halogen fog lights	—	—	—	S
Dual oval exhaust tips	S	S	S	S
Rear wing spoiler	O/A	O/A	O/A	S
Side sill extensions	—	S	S	S
Body-color grille	O/A	S	S	S
<b>STANDARD INTERIOR FEATURES</b>				
Advanced front air bags <sup>‡</sup> with belt-use, passenger-weight and driver's seat-position sensors	S	S	S	S
Front-side-impact air bags and side-impact air curtains <sup>‡</sup> with front/rear coverage	S	S	S	S
Redining front bucket seats with adjustable head restraints	S	S	S	S
Manual driver's seat height adjustment	S	—	—	—
8-way power-adjustable driver's seat	—	S	S	S
60/40 split fold-down rear seatbacks with remote operation	S	S	S	S
Fold-down rear center armrest with cup holders	S	S	S	S
LATCH child-safety-seat anchors in rear seat	S	S	S	S
Cloth-trimmed upholstery, carpet floor mats	S	S	—	—
Leather-trimmed seats, heated front seats, carpet floor mats	—	—	S	S
Center instrument display panel (clock, audio, climate control, outside ambient temperature)	S	S	S	S
Covered dash-top storage compartment	S	S	S	S
Center console armrest with covered dual storage compartments and 12V power point	S	S	S	S
Overhead sunglasses holder	S	S	S	S
Dual illuminated vanity mirrors with flip-up covers	S	S	S	S
Front and rear map lights, cargo-area light	S	S	S	S
Dual front cup holders	S	S	S	S
Power windows with front auto up/down feature	S	S	S	S
Power door locks with 2-stage unlocking	S	S	S	S
Remote keyless entry system with 2 transmitters	S	S	S	S
Power remote trunk-lid release	S	S	S	S
Cruise control with steering-wheel-mounted controls	S	S	S	S
Engine-immobilizer anti-theft system	S	S	S	S
Tilt/telescopic steering wheel with audio controls	S	S	S	S
Leather-wrapped 3-spoke steering wheel, gearshift knob and parking-brake handle	—	S	S	S
CFC-free air conditioning with dust and pollen filter	S	S	S	S
Fully automatic climate control	—	—	—	S
Rear-seat heater ducts	S	S	S	S
AM/FM/CD audio system with 6 speakers	S	—	—	—
AM/FM in-dash 6-disc CD changer with 6 speakers	—	S	S	—
AM/FM in-dash 6-disc CD changer and Bose <sup>®</sup> 7-speaker sound system	—	—	—	S
<b>OPTIONS AND OPTION PACKAGES</b>				
DVD-based navigation system with retractable screen	—	—	—	O

**mazda6**  
5 - D O O R



**MAZDA6 5-DOOR SPECIFICATIONS**

SPECIFICATIONS	MAZDA6i	MAZDA6s
Engine size and type	2.3L DOHC 16-valve 4-cylinder with variable valve timing	3.0L DOHC 24-valve V6 with variable valve timing
Horsepower, SAE net	156* @ 6500 rpm	212 @ 6000 rpm
Torque, SAE net lb-ft	154* @ 4000 rpm	197 @ 5000 rpm
Compression ratio	9.7:1	10.0:1
Ignition system	Fully transistorized breakerless electronic	Fully transistorized breakerless electronic
Fuel system	Multipoint electronic fuel injection	Multipoint electronic fuel injection
Fuel requirement	Unleaded regular gasoline	Unleaded regular gasoline
Fuel economy (EPA estimated mpg)	Manual 24 city/32 hwy Automatic 24 city/31 hwy	Manual 19 city/27 hwy Automatic 20 city/27 hwy
Curb weight (lb)	Manual 3199 Automatic 3274	Manual 3364 Automatic 3422
<b>EXTERIOR DIMENSIONS</b>		
Wheelbase/overall length (in)	105.3/186.8	105.3/186.8
Overall width/overall height (in)	70.1/56.7	70.1/56.7
Track, front/rear (in)	60.2/60.2	60.2/60.2
Turning circle, curb-to-curb (ft)	38.7	38.7
<b>INTERIOR DIMENSIONS (front/rear)</b>		
Headroom (in)	38.7/36.7	38.7/36.7
Headroom with moonroof (in)	38.0/36.7	38.0/36.7
Legroom (in)	42.3/36.5	42.3/36.5
Shoulder room (in)	56.1/54.9	56.1/54.9
<b>CAPACITIES</b>		
Passenger volume (cu ft)	95.7	95.7
Cargo volume (cu ft)	22.1 - with rear seatback folded	22.1 58.7
Fuel capacity (U.S. gallons)	18.0	18.0

**MAZDA6 5-DOOR MECHANICAL FEATURES**

STANDARD MECHANICAL FEATURES	MAZDA6i and MAZDA6s		
	Sport Value Edition	Touring	Grand Touring
2.3L DOHC MZR 16-valve 4-cylinder engine	(MAZDA6i)	(MAZDA6i)	(MAZDA6i)
3.0L DOHC MZJ 24-valve V6 engine	(MAZDA6s)	(MAZDA6s)	(MAZDA6s)
5-speed manual overdrive transmission	S	S	S
5-speed Sport AT automatic transmission (MAZDA6i)	(Available)	(Available)	(Available)
6-speed Sport AT automatic transmission (MAZDA6s)	(Available)	(Available)	(Available)
Power-assisted rack-and-pinion steering with engine-speed-sensing variable power assist	S	S	S
Power-assisted 4-wheel disc brakes	S	S	S
Anti-lock Brake System (ABS) with Electronic Brakeforce Distribution (EBD)	S	S	S
Traction Control System (TCS)	S	S	S
Double wishbone front suspension with stabilizer bar	S	S	S
E-type multilink rear suspension with stabilizer bar	S	S	S

**WHEELS**



18-INCH ALLOY



17-INCH ALLOY

S Standard O Optional --: Not available

\* 146 hp and 149 lb-ft for automatic transmission-equipped vehicles in CA, MA, ME, NY and VT.

† Always wear your safety belt and secure children in the rear seat.

**MazdaUSA.com**

Wherever you see this symbol, you can get the whole story on our interactive Web site.

**MAZDA6 5-DOOR EQUIPMENT & FEATURES**

STANDARD EXTERIOR FEATURES	MAZDA6i and MAZDA6s		
	Sport Value Edition	Touring	Grand Touring
17-inch alloy wheels with P215/50R17 all-season radial tires	S	S	S (MAZDA6i)
18-inch alloy wheels with P215/45R18 all-season radial tires	—	—	S (MAZDA6s)
Dual body-color power remote outside mirrors (heated on Touring and Grand Touring)	S	S	S
Power sliding-glass moonroof with interior sunshade	—	S	S
Clear-lens halogen headlights with automatic shutoff	S	S	—
High-Intensity-Discharge (HID) low-beam headlights	—	—	S
Smoke-tint headlight lenses	—	—	S
Halogen fog lights	—	—	S
Dual oval exhaust tips	S	S	S
Rear wing spoiler	S	S	S
Side sill extensions	S	S	S
Body-color grille	S	S	S
Rear wiper/washer	S	S	S
<b>STANDARD INTERIOR FEATURES</b>			
Advanced front air bags <sup>‡</sup> with belt-use, passenger-weight and driver's seat-position sensors	S	S	S
Front side-impact air bags and side-impact air curtains <sup>‡</sup> with front/rear coverage	S	S	S
Redining front bucket seats with adjustable head restraints	S	S	S
8-way power-adjustable driver's seat	S	S	S
60/40 split fold-down rear seatbacks with remote operation	S	S	S
Retractable cargo area cover	S	S	S
Fold-down rear center armrest with cup holders	S	S	S
LATCH child-safety-seat anchors in rear seat	S	S	S
Cloth-trimmed upholstery, carpet floor mats	S	—	—
Leather-trimmed seats, heated front seats, carpet floor mat	—	S	S
Center instrument display panel (clock, audio, climate control, outside ambient temperature)	S	S	S
Covered dash-top storage compartment	S	S	S
Center console armrest with covered dual storage compartments and 12V power point	S	S	S
Overhead sunglasses holder	S	S	S
Dual illuminated vanity mirrors with flip-up covers	S	S	S
Front and rear map lights, cargo-area light	S	S	S
Dual front cup holders	S	S	S
Power windows with front auto up/down feature	S	S	S
Power door locks with 2-stage unlocking	S	S	S
Remote keyless entry system with 2 transmitters	S	S	S
Cruise control with steering-wheel-mounted controls	S	S	S
Engine-immobilizer anti-theft system	S	S	S
Tilt/telescopic steering wheel with audio controls	S	S	S
Leather-wrapped 3-spoke steering wheel, gearshift knob and parking-brake handle	S	S	S
CFC-free air conditioning with dust and pollen filter	S	S	S
Fully automatic climate control	—	—	S
Rear-seat heater ducts	S	S	S
AM/FM in-dash 6-disc CD changer with 6-speakers	S	S	—
AM/FM in-dash 6-disc CD changer and Bose <sup>®</sup> 7-speaker system	—	—	S
<b>OPTIONS AND OPTION PACKAGES</b>			
DVD-based navigation system with retractable screen	—	—	O



**MAZDA6 SPORT WAGON SPECIFICATIONS**

SPECIFICATIONS		MAZDA6s
Engine size and type		3.0L DOHC 24-valve V6 with variable valve timing
Horsepower, SAE net		212 @ 6000 rpm
Torque, SAE net lb-ft		197 @ 5000 rpm
Compression ratio		10.0:1
Ignition system		Fully transistorized breakerless electronic
Fuel system		Multiport electronic fuel injection
Fuel requirement		Unleaded regular gasoline
Fuel economy (EPA estimated mpg)		20 city/27 hwy
Curb weight (lb)		3483
EXTERIOR DIMENSIONS		
Wheelbase/overall length (in)		105.3/187.8
Overall width/overall height (in)		70.1/57.3
Track, front/rear (in)		60.2/60.2
Turning circle, curb-to-curb (ft)		38.7
INTERIOR DIMENSIONS (front/rear)		
Headroom (in)		38.7/38.6
Headroom with moonroof (in)		38.0/38.6
Legroom (in)		42.3/36.5
Shoulder room (in)		56.1/54.9
CAPACITIES		
Passenger volume (cu ft)		98.0
Cargo volume (cu ft)		33.7
- with rear seatback folded		60.5
Fuel capacity (U.S. gallons)		18.0

**MAZDA6 SPORT WAGON MECHANICAL FEATURES**

STANDARD MECHANICAL FEATURES	MAZDA6s		
	Sport Value Edition	Touring	Grand Touring
3.0L DOHC MZJ 24-valve V6 engine	S	S	S
6-speed Sport AT automatic transmission	S	S	S
Power-assisted rack-and-pinion steering with engine-speed-sensing variable power assist	S	S	S
Power-assisted 4-wheel disc brakes	S	S	S
Anti-lock Brake System (ABS) with Electronic Brakeforce Distribution (EBD)	S	S	S
Traction Control System (TCS)	S	S	S
Double wishbone front suspension with stabilizer bar	S	S	S
E-type multilink rear suspension with stabilizer bar	S	S	S

**WHEELS**



18-INCH ALLOY



17-INCH ALLOY

S: Standard O: Optional -: Not available

\* Always wear your safety belt and secure children in the rear seat.

MazdaUSA.com

Wherever you see this symbol, you can get the whole story on our interactive Web site.

**MAZDA6 SPORT WAGON EQUIPMENT & FEATURES**

STANDARD EXTERIOR FEATURES	MAZDA6s		
	Sport Value Edition	Touring	Grand Touring
17-inch alloy wheels with P215/50R17 all-season radial tires	S	S	-
18-inch alloy wheels with P215/45R18 all-season radial tires	-	-	S
Dual body-color power remote outside mirrors (heated on Touring and Grand Touring)	S	S	S
Power sliding-glass moonroof with interior sunshade	-	S	S
Clear-lens halogen headlights with automatic shutoff	S	S	-
High-Intensity-Discharge (HID) low-beam headlights	-	-	S
Smoke-tint headlight lenses	S	S	S
Halogen fog lights	-	-	S
Dual oval exhaust tips	S	S	S
Rear liftgate spoiler	S	S	S
Side sill extensions	S	S	S
Body-color grille	S	S	S
Rear wiper/washer	S	S	S
STANDARD INTERIOR FEATURES			
Advanced front air bags* with belt-use, passenger-weight and driver's seat-position sensors	S	S	S
Front side-impact air bags and side-impact air curtains* with front/rear coverage	S	S	S
Redining front bucket seats with adjustable head restraints	S	S	S
8-way power-adjustable driver's seat	S	S	S
60/40 split fold-down rear seatbacks with remote operation	S	S	S
Retractable/removable cargo cover and net	S	S	S
Fold-down rear center armrest with cup holders	S	S	S
LATCH child-safety-seat anchors in rear seat	S	S	S
Cloth-trimmed upholstery; carpet floor mats	S	-	-
Leather-trimmed seats; heated front seats; carpet floor mats	-	S	S
Center instrument display panel (clock, audio, climate control, outside ambient temperature)	S	S	S
Covered dash-top storage compartment	S	S	S
Center console armrest with covered dual storage compartments and 12V power point	S	S	S
Overhead sunglasses holder	S	S	S
Dual illuminated vanity mirrors with flip-up covers	S	S	S
Front and rear map lights; cargo-area light	S	S	S
Dual front cup holders	S	S	S
Power windows with front auto up/down feature	S	S	S
Power door locks with 2-stage unlocking	S	S	S
Remote keyless entry system with 2 transmitters	S	S	S
Cruise control with steering-wheel-mounted controls	S	S	S
Engine-immobilizer anti-theft system	S	S	S
Tilt/telescopic steering wheel with audio controls	S	S	S
Leather-wrapped 3-spoke steering wheel, gearshift knob and parking-brake handle	S	S	S
CFC-free air conditioning with dust and pollen filter	S	S	S
Fully automatic climate control	-	-	S
Rear-seat heater ducts	S	S	S
AM/FM in-dash 6-disc CD changer with 6-speakers	S	S	-
AM/FM in-dash 6-disc CD changer and Bose® 7-speaker system	-	-	S
OPTIONS AND OPTION PACKAGES			
DVD-based navigation system with retractable screen	-	-	O

MAZDA6 MODEL AVAILABILITY	MAZDA6 Sport	MAZDA6 Sport Value Edition	MAZDA6 Touring	MAZDA6 Grand Touring
MAZDA6i SPORTS SEDAN	□	□	□	□
MAZDA6s SPORTS SEDAN	-	□	□	□
MAZDA6i 5-DOOR	-	□	□	□
MAZDA6s 5-DOOR	-	□	□	□
MAZDA6s SPORT WAGON	-	□	□	□

**COLOR COMBINATIONS**



**ONYX BLACK**  
(SPORTS SEDAN, 5-DOOR, SPORT WAGON)  
Trim Level Interior Fabrics  
MAZDA6 Sport Beige  
MAZDA6 Sport Value Edition, Touring, Grand Touring Beige or Black



**DARK CHERRY MICA**  
(SPORTS SEDAN, SPORT WAGON)  
Trim Level Interior Fabrics  
MAZDA6 Sport Beige  
MAZDA6 Sport Value Edition, Touring, Grand Touring Beige or Black



**TUNGSTEN GRAY METALLIC**  
(SPORTS SEDAN, 5-DOOR, SPORT WAGON)  
Trim Level Interior Fabrics  
MAZDA6 Sport Gray  
MAZDA6 Sport Value Edition, Touring, Grand Touring Gray or Black



**VOLCANIC RED**  
(5-DOOR)  
Trim Level Interior Fabrics  
MAZDA6 Sport Value Edition, Touring, Grand Touring Gray or Black



**GLACIER SILVER METALLIC**  
(SPORTS SEDAN, 5-DOOR, SPORT WAGON)  
Trim Level Interior Fabrics  
MAZDA6 Sport Gray  
MAZDA6 Sport Value Edition, Touring, Grand Touring Gray or Black



**RED FIRE METALLIC**  
(SPORTS SEDAN)  
Trim Level Interior Fabrics  
MAZDA6 Sport Value Edition, Touring, Grand Touring Beige or Black



**SMOKESTONE**  
(SPORTS SEDAN, SPORT WAGON)  
Trim Level Interior Fabrics  
MAZDA6 Sport Beige  
MAZDA6 Sport Value Edition, Touring, Grand Touring Beige or Black



**VIOLET GRAY**  
(SPORTS SEDAN, 5-DOOR, SPORT WAGON)  
Trim Level Interior Fabrics  
MAZDA6 Sport Value Edition, Touring, Grand Touring Gray or Black



**BRIGHT ISLAND BLUE**  
(5-DOOR)  
Trim Level Interior Fabrics  
MAZDA6 Sport Value Edition, Touring, Grand Touring Beige or Black



**PERFORMANCE WHITE**  
(SPORTS SEDAN)  
Trim Level Interior Fabrics  
MAZDA6 Sport Value Edition, Touring, Grand Touring Beige or Black

**UPHOLSTERY**



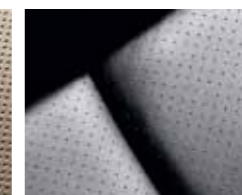
BLACK CLOTH



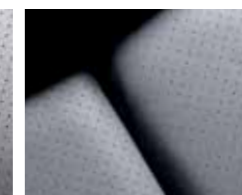
GRAY CLOTH



BEIGE CLOTH



BLACK LEATHER



GRAY LEATHER



BEIGE LEATHER

**MODELS**

**MAZDA6 SPORT VALUE EDITION**

Includes the following features:

- 17-inch alloy wheels with P215/50R17 all-season radial tires
- Side sill extensions; body-color sport grille
- Smoke-tint headlight/taillight housings
- 8-way power driver's seat
- In-dash 6-disc CD changer
- Leather-wrapped steering wheel, shift knob and parking-brake handle
- Rear spoiler (5-Door, Sport Wagon)
- Rear wiper/washer (5-Door, Sport Wagon)
- Retractable cargo cover (5-Door, Sport Wagon)

**MAZDA6 TOURING**

Includes the following features in addition to Sport Value Edition:

- Power sliding-glass moonroof with interior sunshade
- Heated dual power remote outside mirrors
- Leather-trimmed seats
- Heated front seats

**MAZDA6 GRAND TOURING**

Includes the following features in addition to Touring:

- High-Intensity-Discharge (HID) low-beam headlights
- Halogen fog lights
- 200-watt Bose® audio system with 7 speakers
- Fully automatic climate control
- Electroluminescent gauges
- Auto-dimming mirror with HomeLink®
- Anti-theft perimeter alarm
- 18-inch alloy wheels with P215/45R18 tires (MAZDA6s)
- Rear wing spoiler (Sports Sedan)

Product Changes and Options Availability: Following publication of this brochure, certain changes in standard equipment, options, prices and the like, or product delays may have occurred which would not be included in these pages. Your Mazda dealer is your best source for up-to-date information. Mazda reserves the right to change product specifications at any time without incurring obligations. Options shown or described in this brochure are available at extra cost and may be offered only in combination with other options or subject to additional ordering requirements or limitations.



**MAZDASPEED6**

**MAZDASPEED6 SPECIFICATIONS**

SPECIFICATIONS	
Engine size and type	Turbocharged and intercooled 2.3L DOHC 4-cylinder
Horsepower, SAE net	270 @ 5500 rpm
Torque, SAE net lb-ft	280 @ 3000 rpm
Compression ratio	9.5:1
Ignition system	Fully transistorized breakerless electronic
Fuel system	Direct-Injected Spark Ignition (DISI)
Fuel requirement	Unleaded premium gasoline
Fuel economy (EPA estimated mpg, city/hwy)	19/25
CURB WEIGHT (lb)	
MAZDASPEED6	3618
EXTERIOR DIMENSIONS	
Wheelbase/overall length (in)	105.3/186.8
Overall width/overall height (in)	70.1/56.3
Track, front/rear (in)	60.6/60.6
Turning circle, curb-to-curb (ft)	36.8
INTERIOR DIMENSIONS (front/rear)	
Headroom (in)	38.7/37.1
Headroom with moonroof (in)	38.0/37.1
Legroom (in)	42.3/36.5
Shoulder room (in)	56.1/54.9
CAPACITIES	
Passenger volume (cu ft)	96.2
Cargo volume (cu ft)	12.4
Fuel capacity (U.S. gallons)	15.9

**MAZDASPEED6 MECHANICAL FEATURES**

STANDARD MECHANICAL FEATURES	Sport	Grand Touring
2.3L DISI turbocharged & intercooled engine	S	S
6-speed manual transmission	S	S
Active Torque Split All-Wheel Drive	S	S
Limited-slip rear differential	S	S
Liquid-cooled Power-Take-Off (PTO) System	S	S
Power-assisted rack-and-pinion steering with engine-speed-sensing variable assist	S	S
Power-assisted 4-wheel disc brakes with 12-inch rotors	S	S
Anti-lock Brake System (ABS) with Electronic Brakeforce Distribution (EBD)	S	S
Traction Control System (TCS)	S	S
Dynamic Stability Control (DSC)	S	S
Double-wishbone front suspension with higher-rate coil springs	S	S
E-type multilink rear suspension with higher-rate coil springs	S	S
Increased diameter front/rear stabilizer bars	S	S

S: Standard O: Optional -: Not available

\* Always wear your safety belt and secure children in the rear seat.

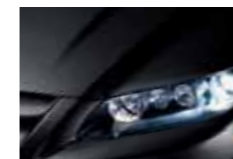
**MazdaUSA.com**

Wherever you see this symbol, you can get the whole story on our interactive Web site.

**MAZDASPEED6 EQUIPMENT & FEATURES**

STANDARD EXTERIOR FEATURES	Sport	Grand Touring
18-inch alloy wheels with P215/45R18 high-performance summer tires	S	S
Unique hood and front fender design	S	S
Unique front and rear bumpers	S	S
Unique side sill extensions	S	S
Unique rear lip spoiler	S	S
Dual body-color power remote mirrors (heated on Grand Touring)	S	S
High-Intensity-Discharge (HID) low-beam headlights with blackout housings	S	S
Halogen fog lights	S	S
Dual integrated oval exhaust tips	S	S
Speed-sensing variable intermittent wipers	S	S
STANDARD INTERIOR FEATURES		
Advanced front air bags* with belt-use, passenger-weight and driver's seat-position sensors	S	S
Front side-impact air bags and side-impact air curtains* with front/rear coverage	S	S
Reclining front bucket sport seats; front and rear adjustable head restraints	S	S
Manual driver's seat height adjustment	S	-
8-way power-adjustable driver's seat	-	S
Heated front seats	-	S
Fold-down rear armrest with cup holders	S	S
LATCH child-safety-seat anchors in rear seat	S	S
Cloth-trimmed upholstery; carpet floor mats	S	-
Leather-trimmed seats; carpet floor mats	-	S
Center instrument display panel (clock, audio, climate control, outside ambient temperature)	S	S
☑ Covered dash-top storage compartment	S	S
☑ Center console armrest with covered dual storage compartments and 12V power point	S	S
Overhead sunglasses holder	S	S
Dual illuminated vanity mirrors with flip-up covers	S	S
Front and rear map lights; cargo-area light	S	S
Dual front cup holders with cover	S	S
Power windows with auto up/down feature	S	S
Power door locks with 2-stage unlocking	S	S
Remote keyless entry system with retractable key	S	-
Mazda Advanced Keyless Entry & Start System	-	S
Power remote trunk-lid release	S	S
Cruise control with steering-wheel-mounted controls	S	S
Engine-immobilizer anti-theft system	S	S
Tilt/telescopic steering wheel with audio controls	S	S
Leather-wrapped 3-spoke steering wheel, gearshift knob and parking-brake handle	S	S
CFC-free air conditioning with dust and pollen filter	S	S
Fully automatic climate control	S	S
Rear-seat heater ducts	S	S
AM/FM in-dash 6-disc CD changer and Bose® 7-speaker system	S	S
Stainless steel MAZDASPEED scuff plates	S	S
Drilled aluminum alloy foot pedals	S	S
OPTIONS AND OPTION PACKAGES		
☑ DVD-based navigation system with retractable screen	O	O
Power sliding-glass moonroof with interior sunshade	-	O

**COLORS**



BLACK MICA



LIQUID PLATINUM METALLIC

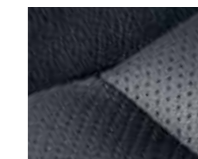


VELOCITY RED MICA

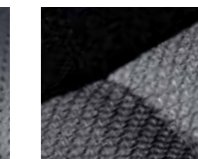


TITANIUM GRAY METALLIC

**UPHOLSTERY**



BLACK LEATHER



BLACK CLOTH

# Keeping it real: Make Your MAZDASPEED6 Yours Alone.

All Genuine Mazda and MAZDASPEED Accessories and Parts installed by your Mazda dealer before or at initial vehicle retail delivery carry the same new-vehicle limited warranty as your new MAZDASPEED6. See your dealer for details.

**MAZDASPEED6 Accessories**

Front Mask	A	Cassette Player	A
Moonroof Wind Deflector	O/A	SIRIUS Satellite Radio Receiver Kit*	O/A
Car Cover	A	Alarm Shock Sensor Upgrade	O/A
Car-Cover Cable Lock	A	Windshield Sunscreen	A
Fuel-Filler Door (Pearl Satin)	O/A	All-Weather Floor Mats	O/A
Fuel-Filler Door (Bright Chrome)	O/A	Cargo Net	O/A
Compass Auto-Dimming Mirror	O/A	First Aid Kit	A
iPod® Integration Module	A	Roadside Assistance Kit	A
In-Dash 6-disc CD/MP3 Changer With Bose® Audio	A	Wheel Locks	O/A

O : Optional A : Dealer-available accessory



A. Mazda iPod® Integration Module. Taking your Apple® iPod along for the ride just became a lot easier. Mazda's iPod Integration Module allows you to play your iPod through your MAZDA6 audio system with crystal-clear sound and a built-in battery charger. Works with all 30-pin, dock-connector-equipped iPods. (iPod not included. See your dealer for compatibility conditions and limitations on installation.) B. MAZDASPEED Front Mask. Custom-tailored to fit your MAZDASPEED6 and help protect it from dirt, paint chips and dings. Features handsome MAZDASPEED logo. C. Car Cover. Provides convenient, affordable outdoor protection for your MAZDASPEED6. Durable StormProof® construction delivers all-weather protection in a lightweight and easily storable design. D. Cargo Net. Keep smaller items from bouncing around in your trunk or cargo area of your MAZDASPEED6. Custom-designed, easily installed and removed. E. SIRIUS Satellite Radio Receiver Kit. Lets you receive over 120 channels of crisp, clear and commercial-free digital-quality music, news, sports and entertainment from coast to coast.\*

Apple® and iPod® are registered trademarks of Apple Computer, Inc.  
SIRIUS  
Satellite Radio reception requires a subscription and Mazda satellite radio receiver accessory kit. Available only in the U.S., except Alaska and Hawaii.



# A top priority is your peace of mind.

We want your new MAZDA6 or MAZDASPEED6 to be a source of pride, exhilaration and peace of mind for years to come. Which is why every new 2007 Mazda vehicle is covered by all of the following:

- A 3-year/36,000-mile\* "bumper-to-bumper" limited warranty.
- A 3-year/36,000-mile,\* 24/7 Emergency Roadside Assistance program.
- A 5-year/60,000-mile\* limited powertrain warranty.

For details, please see your Mazda dealer, visit MazdaUSA.com or call toll-free 800-639-1000.

## Make the ultimate cyberspace pit stop.

For more motorized fun of the virtual variety, Web surf yourself straight over to MazdaUSA.com and add it to your list of favorites. You can scope out all the new Mazdas—even compare them to the competition. Download photos, vehicle specs and MSRPs. Order brochures. Score seasonal incentives and special services offers. Pick up handy maintenance tips. Get updates on driving technology, tuning and

motorsports in the MAZDASPEED area. Interactively "build" the MAZDA6 or MAZDASPEED6 of your dreams and trick it out with your favorite accessories. Request a quote. Even locate a Mazda dealer. It's the quick and easy way to bring yourself totally up to speed.



## Financing made simple.

Whether you're interested in buying or leasing a new Mazda, Mazda American Credit (MAC) is committed to helping make the financing process a convenient, hassle-free and satisfying experience. Put our first-class customer service to the test. Simply ask your Mazda dealer to explain which MAC purchase or lease plan best meets your needs. Or visit MazdaCredit.com for more information.

\* Whichever comes first.

## Genuine Mazda Accessories: The real deal.

Part of the joy of owning a new MAZDA6 is personalizing it. And the best way to enhance its appearance or performance is with Genuine Mazda Accessories. Better yet, all Genuine Mazda Accessories installed by your Mazda dealer, prior to or at initial vehicle retail delivery, carry the same new-vehicle limited warranty as your new Mazda. See your dealer for details.



A. Mazda iPod® Integration Module. Taking your Apple® iPod along for the ride just became a lot easier. Mazda's iPod Integration Module allows you to play your iPod through your MAZDA6 audio system with crystal-clear sound and a built-in battery charger. Works with all 32-pin, dock-connector-equipped iPods (iPod not included.) B. Gearshift Knob. Upgrade the sporty look of your MAZDA6 interior with a stylish, silver/black, two-tone gearshift knob. Available for automatic or manual transmission-equipped vehicles. Looks best when used with the silver/black, two-tone parking brake handle. C. Steering Wheel. Further enhance the interior of your MAZDA6 with a silver/black, two-tone MAZDA6 steering wheel. (Does not include air bag, air bag cover and horn pad.) D. Cargo Tray. Protect the cargo area of your MAZDA6 with this versatile and durable cargo tray. Easily cleaned with soap and water, it's the practical way to shield carpet from dirt, moisture and wear. E. Rear Bumper Step Plate. Protect your MAZDA6 Sport Wagon's rear bumper from the scratches and dings that occur during loading and unloading with a rear bumper step plate that's as durable as it is beautiful. F. Cargo Net. Keep smaller items from bouncing around in your trunk or cargo area of your MAZDA6. Custom-design, easily installed and removed.

Apple® and iPod® are registered trademarks of Apple Computer, Inc.

MAZDA6	Sports Sedan	5-Door	Sport Wagon	MAZDA6	Sports Sedan	5-Door	Sport Wagon
Sport Grille	O/a	S	S	Compass Auto-Dimming Mirror	O/a	O/a	O/a
Front Mask	A	A	A	Compass Auto-Dimming Mirror With Homelink®	O/a	O/a	O/a
17-Inch Alloy Wheel	A	A	A	In-Dash 6-Disc CD/MP3 Changer With Bose® Audio	A	A	A
Door-Edge Guards	O/a	O/a	O/a	In-Dash 6-Disc CD/MP3 Changer With Standard Audio	O/a	O/a	O/a
Side Protector Moldings	P/a	A	P/a	Cassette Player	O/a	O/a	O/a
Moonroof Wind Deflector	O/a	O/a	O/a	Sirius Satellite Radio Receiver Kit†	O/a	O/a	O/a
Car Cover	A	A	—	Phatnoise® Car Audio System	A	—	—
Car-Cover Cable Lock	A	A	—	Remote Engine Start (A/T Only)	O/a	O/a	O/a
Bike Carrier	—	—	A	Alarm Shock Sensor Upgrade	O/a	O/a	O/a
Roof Rack Side Rails	—	—	O	Windshield Sunscreen	A	A	A
Roof Rack Cross Bars	—	—	A	Parking-Brake Lever	A	A	A
Roof Cargo Box	—	—	A	Ashtray	A	A	A
Luggage Basket With Stretch Net	—	—	A	Cigarette Lighter	A	A	A
Ski/Snowboard Carrier	—	—	A	Carpet Floor Mats	S	S	S
Fuel-Filler Door (Pearl Satin)	O/a	O/a	O/a	All-Weather Floor Mats	O/a	O/a	O/a
Fuel-Filler Door (Bright Chrome)	O/a	O/a	O/a	Cargo Organizer	P/a	P/a	P/a
Rear Wing Spoiler	O/a	S	—	Cargo Mat	—	O/a	O/a
Rear Lip Spoiler	O/a	—	—	First Aid Kit	A	A	A
Rear Finisher	P/a	—	P/a	Roadside Assistance Kit	A	A	A
License-Plate Frame	A	A	A	Wheel Locks	O/a	O/a	O/a
				Touch-Up Paint	A	A	A

S: Standard O: Optional P: Package A: Dealer-available accessory —: Not available

† SIRIUS® requires a subscription and Mazda satellite radio receiver accessory kit. Available only in the U.S., except Alaska and Hawaii.

All children instinctively know it.

A few adults still remember it.

One unique car company refuses to outgrow it.

In grown-up language, it means the exhilaration and liberation that come from experiencing sheer motion.

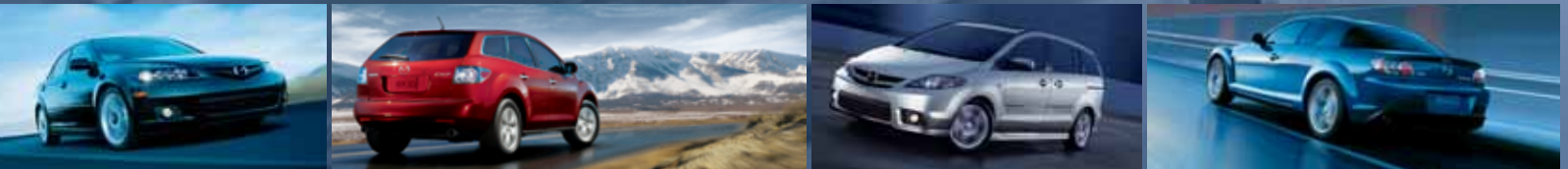
But as usual, children put it much better.

And simply call it Zoom-Zoom.

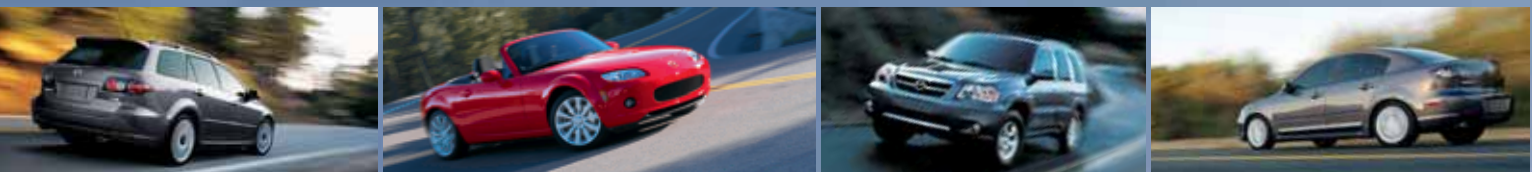
We practice it every day.

It's why we build the kind of cars we do.

Mazda. Always the soul of a sports car.®



zoom-zoom



**mazda**<sup>®</sup>  
MazdaUSA.com