



Mazda3



zoom-zoom



There's a feeling we've never forgotten. That thrilling rush of exhilaration. A sensation of pure joy and liberation. The emotion of motion. We call this feeling Zoom-Zoom and we live by its spirit. It's the essence of Mazda. Zoom-Zoom fires the soul of every vehicle we build and it beats in the heart of everyone who drives one.

The Mazda3. Now that's Zoom-Zoom



www.mazda.co.uk

Wherever you see this symbol, you can find out more online at our website.

- 4 **What gets you out of bed in the morning?**
Introduction.
- 6 **Why should all cars look the same?**
Design and style.
- 10 **Why should everyone take the same route?**
Performance and driving dynamics.
- 14 **How do you maintain your inner calm?**
Quality and craftsmanship.
- 22 **Why should safety take a back seat?**
Active and passive safety.
- 26 **Your Mazda3**
Range overview and options.
- 42 **The Mazda3 in detail**
Technical data, standard equipment, options, colour and trim, configurator.

What gets you out of bed in the morning?

Early morning. The rest of the world is sleeping. But you have a date with a car and an empty road. Not just any car, but the exhilarating Mazda3. Its stunning appearance is a departure from convention.



Spirited engines and a brilliant chassis deliver on the promise of the Mazda3's sporty looks. Whilst a stylish interior and generous equipment redefine the true meaning of quality. Get up and go with the exhilarating Mazda3.





Why should all cars look the same?

Dare to be different with the distinctive Mazda3. With its adventurous, sports styling, it boldly dispenses with the idea that all cars have to look alike.

From every angle, in every detail, the Mazda3 blends flowing bodylines with outstanding functionality.



Key to the design are the spacious cabin, dynamic 'face', stylish wheels and a wide stance that creates a sense of stability and sturdiness. Unique styling cues, from the rearward sloping rear quarter windows to the stylish rear light clusters with their aerodynamically-optimised crystal covers, serve to reinforce the sense of individuality.

Whether you favour the dynamic 5-door hatchback or the sophisticated 4-door saloon, the Mazda3 will leave a lasting impression long after its tail-lights have disappeared into the distance.

Moves you even when it's standing still.

The Mazda3 can really move you. And not just from A to B. Just a glance at the Mazda3's youthful, dynamic stance tells you this is a car with a confident and compelling character.

The sporty 5-door hatchback features muscular front and rear wheel arches, complemented by an aggressively-styled front grille. The 4-door saloon, on the other hand, wears an altogether more sophisticated set of curves with a coupé-like roof line. Whilst bearing a strong family resemblance, the two models do not share a single body panel.

Just like you, they each have a distinctive personality and their own individual appeal.





Why should everyone take the same route?





The shortest distance between two points is a straight line. But where's the fun in that?



The turbo diesel engines with 90ps (66kW), 109ps (80kW) and 143ps (105kW)

The brilliant turbo diesel engines with common-rail technology combine power and economy with new levels of efficiency and cleanliness; the 109ps (80kW) and 143ps (105kW) versions feature a diesel particulate filter as standard.

Get behind the wheel of the Mazda3 and even the shortest journey will take on an exciting, sports car-like feeling. At its heart lies a choice of advanced, fun-to-drive engines, including the MZR petrol range offering up to 150ps (110kW) of power and the latest MZ-CD common-rail turbo diesel engines with up to 143ps (105kW).

Whichever engine you favour, you can be assured that it will be engineered with the latest smooth-shifting 5-speed or 6-speed manual transmissions. An optional 4-speed Activematic transmission is available, offering the choice between fully automatic or pseudo-manual gearshifting.

A rigid body structure, finely-tuned independent suspension and precise, responsive steering provide an ideal blend of comfort and control, to help you get the most out of every twist and turn.



www.mazda.co.uk





How do you maintain your inner calm?





Soak up the unique atmosphere of a Mazda3 and you may just see the world in a different light.

Escape the hustle and bustle of city life with the Mazda3. As the smooth, quiet engine eases your senses, take time to discover the exceptional craftsmanship of the interior cabin. Enjoy the supportive comfort of the driver's seat and welcome the efforts of our ergonomics engineers in perfecting the positions of the switches and controls. You're sure to find the air conditioning creates the right atmosphere, allowing you to choose your preferred temperature for complete comfort. While the pure, clear sound of the Bose® premium audio system whisks you away to your favourite chill-out haunt.

Shouldn't every journey be this relaxing?



Bose®. The art of acoustics

Live music has a sound of its own, with music appearing to come from the performers on stage, rather than speakers in the doors. That's the goal with every sound system that Bose® engineers.

Meticulous research, precisely positioned speakers inside the car and electronic equalisation result in pure balanced stereo, true-to-life panoramic sound and powerful bass reproduction.

Concert hall sound quality in a car? Let your ears be the judge.

Mazda and Bose®. Made for each other

Sophisticated automotive engineering meets sophisticated in-car sound engineering. From the outset, Bose® and Mazda engineers worked in harmony to develop a premium sound system tailored precisely to match the acoustics of the Mazda3. Not surprisingly, the performance is truly outstanding.



Seven high-performance speakers:

- 1 Two 4cm tweeters in the door mirror panels.
- 2 Two 16.5cm neodymium low / mid-range speakers in front doors.
- 3 Two 16.5cm neodymium wide-range speakers in rear doors.
- 4 One 13cm Nd® Richbass® woofer in a 4.5-litre custom-engineered bass enclosure mounted under the passenger seat.

System electronics:

- 5 Digital amplifier mounted under the driver's seat. Includes Bose® Digital Signal Processing and five channels of customised equalisation.

Vehicle shown is not to UK specification. Bose® standard on 1.6 and 2.0 Sport only.



Automatic climate control

Maintains your preferred temperature for a pleasant climate, whatever the weather. (Standard on Takara, 1.6 Sport and 2.0 Sport)

Sitting pretty

Ergonomically-designed front seats are especially supportive in the lumbar and pelvic areas and provide a wide range of adjustment for your ideal driving position. (Leather standard on 2.0 Sport)

Audio control

The multi-function steering wheel with audio controls lets you keep your hands exactly where they should be - in control. (Standard on Takara and Sport models)



Attention to detail clearly defines the Mazda3. From its subtly individual exterior styling to its superb build quality and driver-focused functionality, every element is designed to uplift and inspire.



Cruise control

Set your desired speed and the Mazda3 will maintain it for as long as you wish. Perfect for motorways or when towing. (Standard on 2.0 Sport)



Intelligent storage

Intelligently-designed storage includes a double-bottomed centre console offering a rear-hinged tray and a generously-proportioned 3.6-litre storage box.



Flexible space

Compact multi-link rear suspension frees up space in the deep, wide luggage area, while the 60/40 split rear seat design and range of lifestyle options (see pages 38-39) mean the Mazda3 has a big appetite for luggage.

Why should safety take a back seat?

Here at Mazda, we take your safety seriously. So the Mazda3 benefits from a comprehensive range of active and passive safety systems, developed to protect you and those around you.

To start with, the Mazda3 is constructed around a reinforced body structure. This features the high-rigidity Mazda Advanced Impact Distribution and Absorption System, which is designed to efficiently disperse impact energy in the event of a collision.

Prevention, however, is better than cure. So the Mazda3 comes with a range of active safety features to help you cope with the unexpected, including Dynamic Stability Control (DSC) and Traction Control System (TCS) (standard on 1.6 Sport and 2.0 Sport models). Because you can't leave safety to chance.



Passive safety features

The passive safety system includes front, side and curtain* airbags, while the collapsible brake pedal and collapsible steering column minimise the risk of injury in the event of an impact.

* Curtain airbags are standard on Takara, 1.6 Sport and 2.0 Sport.

Mazda Advanced Impact Distribution and Absorption System

The high-rigidity Mazda Advanced Impact Distribution and Absorption System illustrated in the main image, is designed to efficiently disperse impact energy in the event of a collision.





Stopping power

Anti-lock Braking System (ABS) with Electronic Brake-force Distribution (EBD) and Emergency Brake Assist (EBA) safely helps to reduce stopping distances.

Keep on track

Even the best driver can end up in a skid. But the Dynamic Stability Control (DSC) and Traction Control System (TCS) help keep you on the right track. (Standard on 1.6 Sport and 2.0 Sport)

ISOFIX child seat mountings

ISOFIX child seat mountings are provided on the outer positions of the rear seats. A wide range of baby and child seats is available as an option (see page 38). Image shows Baby Safe ISOFIX Plus seat, suitable for children weighing up to 13kg.







Mazda3. The range overview

Mazda3 S



Key features:

- 15" steel wheels.
- Audio system with MP3 compatible single CD player, AUX jack and four speakers.
- Driver, front passenger and front side airbags.
- Remote central locking with deadlocking and jack-knife key.
- Front electric windows.
- ISOFX child seat anchorages.
- Seatbelt reminder for front and rear seats.
- Optional manual air conditioning.
- Grey cloth interior.

Mazda3 Takara



Additional Takara features over the S:

- 16" alloy wheels.
- Curtain airbags (front and rear).
- Leather steering wheel with remote audio controls and leather gear knob.
- Climate control air conditioning.
- Rear seat centre armrest.
- Driver's seat lumbar support.
- Black / Red cloth interior.
- Front sports bumper and rear spoiler.
- Front fog lights.
- Front and rear electric windows with global opening/closing.
- Trip computer.
- 6-disc CD autochanger with AUX jack.
- Optional Activematic transmission (petrol only)



Mazda3. The range overview (continued)

Mazda3 1.6 Sport



Additional 1.6 Sport features over the Takara:

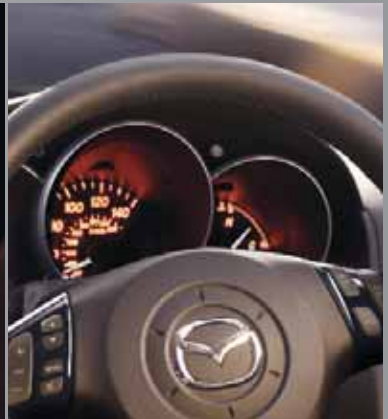
- 17" alloy wheels.
- Bose® premium audio system, 6-disc autochanger, AUX jack and seven speakers.
- Dynamic Stability Control (DSC) with Traction Control System (TCS).
- Blackout instrument dials.
- Xenon headlights with automatic headlight levelling with auto dusk-sensing lights.
- LED rear lights.
- Sports styling including body-coloured front and rear sports bumper, side skirts and rear spoiler.
- Rain sensing wipers.
- Privacy glass.
- Chrome exhaust (petrol only).

Mazda3 2.0 Sport



Additional 2.0 Sport features over the 1.6 Sport:

- Leather seats.
- Cruise control.
- 6-speed manual transmission.



Wheels to move you

Individual style is part of the Mazda3's character and appeal. Now you can enhance it further with a choice of beautiful and dynamic alloy wheels. Combine them with chrome door mirror covers and side indicator rings and you will have a car that provides the ultimate in visual satisfaction.

- | | | | |
|---|---|---|---|
| 1 | 15" alloy wheel
in 5-spoke design (Design 31). | 3 | 16" alloy wheel
in 5-spoke design (Design 33). |
| 2 | 15" or 16" alloy wheel
in 5-spoke design (Design 32). | 4 | 17" alloy wheel
in 10-spoke design (Design 34). |





Sportswear for the road

Inspired by the high-performance Mazda3 MPS, there's a sports styling pack available for both the Mazda3 hatchback and saloon. The pack comprises a sports front grille, front and rear aero bumpers, side skirts, and a rear spoiler, plus rectangular front fog lights.

Combine this with other sports accessories, like sports door mirrors, lowered suspension and chrome exhaust trim, and you have a car that will appeal to even the keenest driver.



- 1 **Chrome exhaust trim**
provides added visual impact.
- 2 **Sports door mirrors**
reflect your sporting character.
- 3 **Roof spoiler (hatchback)**
makes a bold statement.
- 4 **Eibach suspension-lowering kit**
further enhances sporty looks and
driving dynamics.



Inner qualities

Quality and craftsmanship are the hallmarks of the Mazda3. Combine that with a wide range of interior trim options and you can enjoy a very individual look. From race-inspired alloy sports pedals to cool piano black trim highlights, every exclusive element serves to complement the Mazda3's style and enhance your driving experience.



1

1 **Air vent bezel**
in piano black finish.

2 **Gear knob and handbrake cover**
in piano black finish.

3 **Gear knob and handbrake cover**
in titanium finish.

4 **Scuff plates (front only)**
protect sills from scratches and look
good too.



2



3

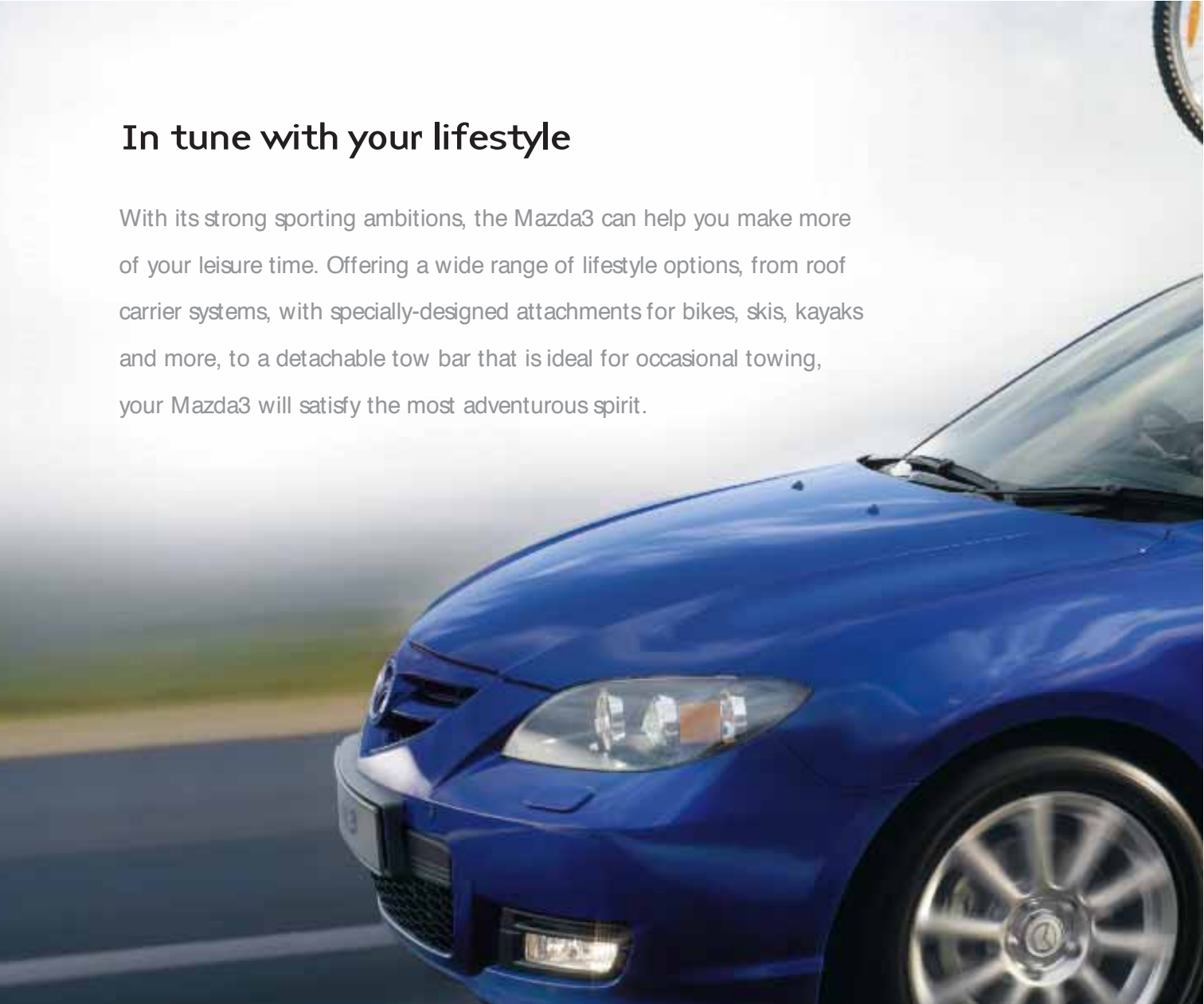


4



In tune with your lifestyle

With its strong sporting ambitions, the Mazda3 can help you make more of your leisure time. Offering a wide range of lifestyle options, from roof carrier systems, with specially-designed attachments for bikes, skis, kayaks and more, to a detachable tow bar that is ideal for occasional towing, your Mazda3 will satisfy the most adventurous spirit.



- 1 **Smartnav Satellite Navigation System** provides in car navigation with 'real-time' updates on your journey. Touch screen upgrade also available to purchase.



- 2 **Ski attachment** holds two pairs of skis or one snowboard. Large version holds six pairs of skis or four snowboards.



3



4



5

- 3 **Detachable tow bar**
to pull up to 1,300kg braked load (12% gradient), depending on engine.
- 4 **Base roof carrier system**
that can be combined with attachments for bikes, skis, kayaks and more.
- 5 **Mudflaps**
help to protect the paintwork from stone chips and dirt.

Enhanced protection

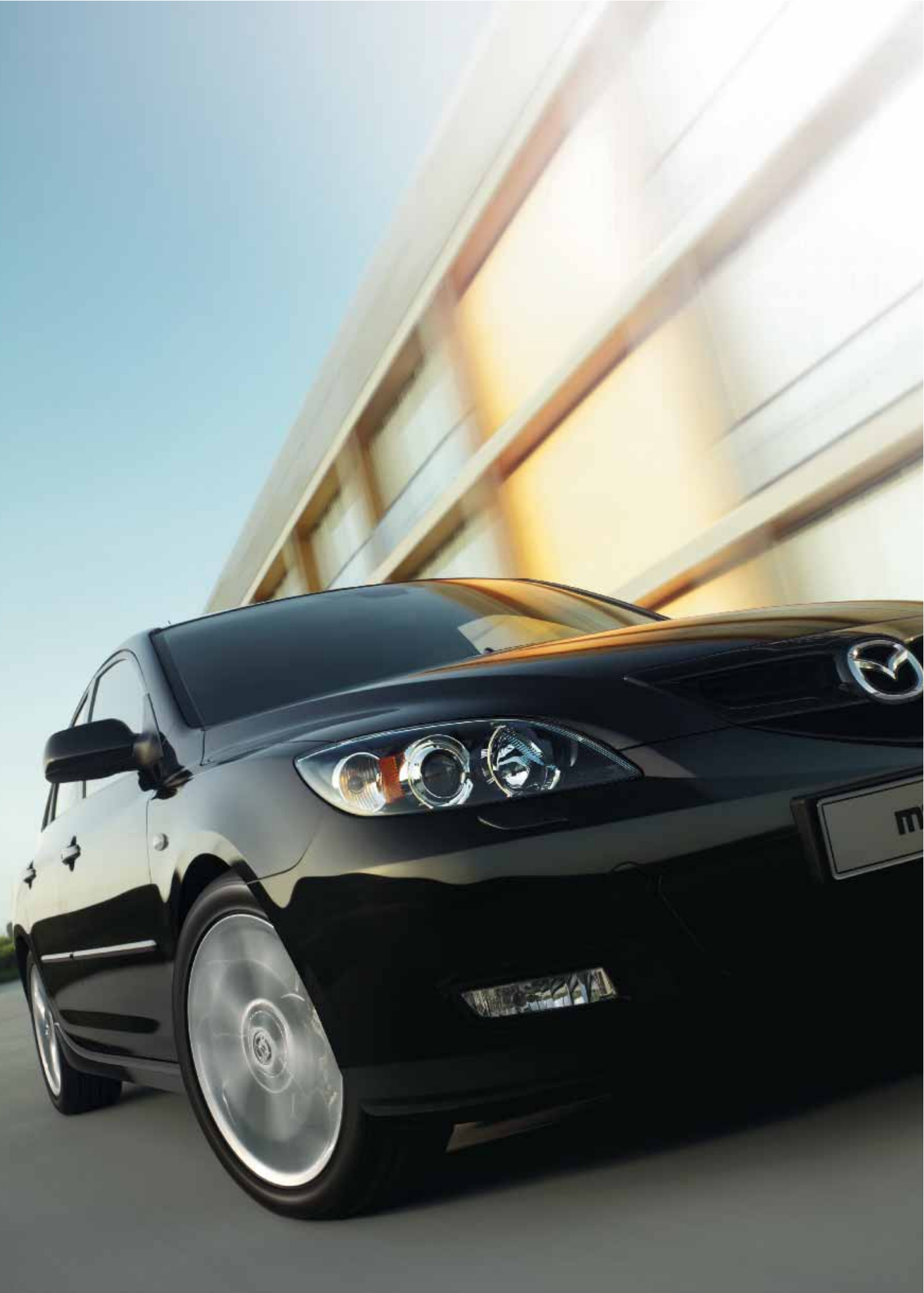
The Mazda3 is thoughtfully designed and strongly built to care for your passengers and belongings alike. Choose from a wide range of baby and child seats, and purpose-designed interior mats and luggage storage solutions to create a safe, comfortable and practical way to travel.



- 1 **Carpet floor mat, 'Luxury' in black.**
- 2 **Front and rear parking distance sensors** detect obstacles in front and behind your car.
- 3 **Trunk liner and anti-slip mat** help to protect the luggage compartment.
- 4 **Trunk net** secures items while on the move.
- 5 **Trunk storage shelf (5dr only)** provides extra stowage possibilities.
- 6 **Rear side and rear window sunblinds** provide more comfortable travel.
- 7 **Baby Safe Plus seat** (up to 13kg).
- 8 **ISOFIX Duo Plus seat** (9kg to 18kg).
- 9 **Kid Plus seat** (15kg to 36kg).
- 10 **Baby care mirror** allows you to keep an eye on your younger passengers.
- 11 **Bumper corner protectors** help prevent minor parking scrapes.
- 12 **Rear bumper step protector** protects the bumper during loading. Its transparency makes the protector almost invisible.







Mazda Credit

Mazda Credit has developed finance packages to provide you with choice and flexibility when buying your new Mazda. Time and convenience are also important to many customers which is why Mazda Credit may be worth a closer look when buying your new Mazda.

Why Mazda Credit?

- Face to face service in the Mazda dealership
- Simple application process
- A quick decision – two-thirds accepted instantly
- A proven track record – we finance over 50% of all new Mazda vehicles*
- Nothing but finance and insurance for Mazda vehicles
- Interest rates fixed for the duration of your loan

* Retail sales figures correct as at 31 October 2007

Mazda MultiOption Cashplan

The benefits:

- No regular instalments
- Flexibility to keep, return or exchange your Mazda at the end of the agreement
- Fewer major service and repair bills
- Protected against fall in used car prices by an Optional Final Payment (Guaranteed Minimum Future Value)

Mazda MultiOption

The benefits:

- Enjoy the flexibility of choosing a contract term which best suits your needs
- Flexibility to keep, return or exchange your Mazda at the end of the agreement
- Protected against fall in used car prices by an Optional Final Payment (Guaranteed Minimum Future Value)

To find out more about the benefits of Mazda Credit speak to your Mazda dealer today.

Finance subject to status. Guarantees / Indemnities may be required. Mazda Credit CM13 3AR

Mechanical Features

Engines:

- 1.4 MZR Petrol
- 1349cc in-line 4-cylinder, 16-valve, DOHC, front-mounted, developing 84ps (62kW) at 6000rpm and 122Nm at 4000rpm.
 - CO₂ emissions of 157g/km (EC Stage IV).
 - Powertrain Control Module (PCM).
 - Battery – 50Ah or 75Ah.
 - Alternator – 12V-80A
 - Sequential electronic multi-point fuel injection.
 - Sequential Valve Timing System (S-VT).

- 1.6 MZR Petrol
- 1598cc in-line 4-cylinder, 16-valve, DOHC, front-mounted, developing 105ps (77kW) at 6000rpm and 145Nm at 4000rpm.
 - CO₂ emissions of 162g/km (5-speed manual, hatchback and saloon), 183g/km (Activematic hatchback) and 179g/km (Activematic Saloon) (EC Stage IV).
 - Powertrain Control Module (PCM).
 - Battery – 50Ah or 75Ah.
 - Alternator – 12V-80A
 - Sequential electronic multi-point fuel injection.
 - Sequential Valve Timing System (S-VT).
 - Variable Induction System.

- 2.0 MZR Petrol
- 1999cc in-line 4-cylinder, 16-valve, DOHC, front-mounted, developing 150ps (110kW) at 6500rpm and 187Nm at 4000rpm.
 - CO₂ emissions of 189g/km (EC Stage IV).
 - Powertrain Control Module (PCM).
 - Battery – 50Ah or 75Ah.
 - Alternator – 12V-110A
 - Sequential electronic multi-point fuel injection.
 - Sequential Valve Timing System (S-VT).
 - Variable Induction System.

- 1.6 MZ-CD Diesel (90ps)
- 1560cc in-line 4-cylinder, 16-valve, DOHC, front-mounted, developing 90ps (66kW) at 4000rpm and 215Nm at 1750rpm.
 - CO₂ emissions of 125g/km (EC Stage IV).
 - Powertrain Control Module (PCM).
 - Battery – 80Ah.
 - Alternator – 12V-150A
 - Common-rail fuel injection.

- 1.6 MZ-CD Diesel (109ps)
- 1560cc in-line 4-cylinder, 16-valve, DOHC, front-mounted, developing 109ps (80kW) at 4000rpm and 240Nm at 1750rpm.
 - CO₂ emissions of 128g/km (EC Stage IV).
 - Powertrain Control Module (PCM).
 - Battery – 80Ah.
 - Alternator – 12V-150A
 - Common-rail fuel injection.
 - Diesel particulate filter.

- 2.0 MZR-CD Diesel (143ps)
- 1998cc in-line 4-cylinder, 16-valve, DOHC, front-mounted, developing 143ps (105kW) at 3500rpm and 360Nm at 2000rpm.
 - CO₂ emissions of 162g/km (EC Stage IV).
 - Powertrain Control Module (PCM)
 - Battery – 95Ah.
 - Alternator – 12V-150A.
 - Common-rail fuel injection.
 - Diesel particulate filter.

Transmissions:

- 5- or 6-speed manual (6-speed only available on 2.0 MZR and 2.0 MZR-CD) – Giving precise, positive shift feel to provide a feeling of unity between driver and vehicle.
- 4-speed Activematic (optional on 1.6 Takara) – Choice between automatic or manual shifting.

Body:

- Self-supporting rigid and torsion-resistant all-steel body with defined crush zones for the front and rear sections, stable passenger safety cell with side impact reinforcement in the doors.
- Mazda Advanced Impact Distribution and Absorption System designed to secure the critical interior space in the event of an accident.
- Supplementary Restraint System (SRS) comprising central control unit and crash sensors, seatbelt pre-tensioners, load-limiters and airbag system.

Chassis and Suspension:

- Front: Independent suspension with MacPherson struts, 4-point rubber mounting system and liquid-filled bushings.
- Rear: E-type multi-link suspension with monotube dampers and low-mounted springs to maximise load compartment space.

Brake System:

- Hydraulic, diagonally divided dual-circuit system with power brake unit.
- Anti-lock Braking System (ABS) with Electronic Brake-force Distribution (EBD) and Emergency Brake Assistance (EBA).
- Front: 278mm (300mm on 2.0 MZR and 2.0 MZR-CD) ventilated disc brakes.
- Rear: 265mm (280mm on 2.0 MZR and 2.0 MZR-CD) disc brakes.

Model Availability and Technical Data

Model Availability

	1.4 MZR	1.6 MZR	1.6 MZR Activematic	2.0 MZR	1.6 MZ-CD (90ps)	1.6 MZ-CD (109ps)	2.0 MZ-CD (143ps)
Hatchback							
S	■	–	–	–	■	–	–
Takara	–	■	■	–	–	■	–
Sport (1.6)	–	■	–	–	–	–	–
Sport (2.0)	–	–	–	■	–	–	■
Saloon							
Takara	–	■	■	–	–	–	–
Sport (1.6)	–	■	–	–	–	–	–
Sport (2.0)	–	–	–	■	–	–	–

■ = Available.

Engine Type

Displacement (cc)	1349	1598	1598	1999	1560	1560	1998
Bore x stroke (mm)	74.0 x 78.4	78.0 x 83.6	78.0 x 83.6	87.5 x 83.1	75.0 x 88.3	75.0 x 88.3	86.0 x 86.0
Valves per cylinder	4	4	4	4	4	4	4
Maximum output [ps (kW) / rpm]	84 (62) / 6000	105 (77) / 6000	105 (77) / 6000	150 (110) / 6500	90 (66) / 4000	109 (80) / 4000	143 (105) / 3500
Maximum torque (Nm / rpm)	122 / 4000	145 / 4000	145 / 4000	187 / 4000	215 / 1750	240 / 1750	360 / 2000
Compression ratio	10.0:1	10.0:1	10.0:1	10.8:1	18.0:1	18.0:1	16.7:1

Transmission

Type		5-speed manual	5-speed manual	4-speed automatic	6-speed manual	5-speed manual	5-speed manual	6-speed manual
Gear ratios:	1st	3.416	3.416	2.816	3.454	3.666	3.666	3.538
	2nd	1.842	1.842	1.497	2.059	2.047	2.047	1.913
	3rd	1.290	1.290	1.000	1.392	1.344	1.344	1.218
	4th	0.972	0.972	0.725	1.030	0.921	0.921	0.880
	5th	0.820	0.820	–	0.837	0.704	0.704	0.809
	6th	–	–	–	0.717	–	–	0.673
	Reverse	3.214	3.214	2.648	3.198	3.727	3.727	3.831
Final gear ratio		4.388	4.388	4.416	4.388	3.411	3.411	3.611 (1st-4th) 3.095 (5th-6th)

Steering

Steering gear	Power-assisted rack and pinion						
Minimum turning circle (wall-to-wall) (m)	10.9	10.9	10.9	10.9	10.9	10.9	10.9

Performance and Economy

Hatchback

Acceleration [0-62mph (0-100km/h) in sec]	14.5	11.2	12.6	9.1	12.2	11.6	9.9
Top speed [mph (km/h)]	106 (169)	114 (182)	109 (174)	126 (202)	108 (174)	113 (182)	126 (203)
Fuel consumption ¹⁾ [mpg (l/100km)]:	Urban	32.8 (8.6)	31.7 (8.9)	27.7 (10.2)	26.6 (10.6)	47.1 (6.0)	39.8 (7.1)
	Extra Urban	50.4 (5.6)	49.6 (5.7)	44.1 (6.4)	44.1 (6.4)	70.6 (4.0)	52.3 (5.4)
	Combined	42.2 (6.7)	40.9 (6.9)	36.2 (7.8)	35.8 (7.9)	60.1 (4.7)	47.1 (6.0)
CO ₂ emissions ¹⁾ (g/km)	157	162	183	189	125	128	162
EC emission level	EC Stage IV	EC Stage IV	EC Stage IV	EC Stage IV	EC Stage IV	EC Stage IV	EC Stage IV
Recommended fuel	Unleaded 95 RON				Diesel		
Fuel tank capacity (litres)	55	55	55	55	55	55	55

Saloon

Acceleration [0-62mph (0-100km/h) in sec]	–	11.2	12.6	9.1	–	–	–
Top speed [mph (km/h)]	–	115 (185)	110 (177)	130 (209)	–	–	–
Fuel consumption ¹⁾ [mpg (l/100km)]:	Urban	–	31.7 (8.9)	28.2 (10.0)	26.6 (10.6)	–	–
	Extra Urban	–	49.6 (5.7)	45.6 (6.2)	44.1 (6.4)	–	–
	Combined	–	40.9 (6.9)	37.2 (7.6)	35.8 (7.9)	–	–
CO ₂ emissions ¹⁾ (g/km)	–	162	179	189	–	–	–
EC emission level	–	EC Stage IV	EC Stage IV	EC Stage IV	–	–	–
Recommended fuel	–	Unleaded 95 RON			–	–	–
Fuel tank capacity (litres)	–	55	55	55	–	–	–

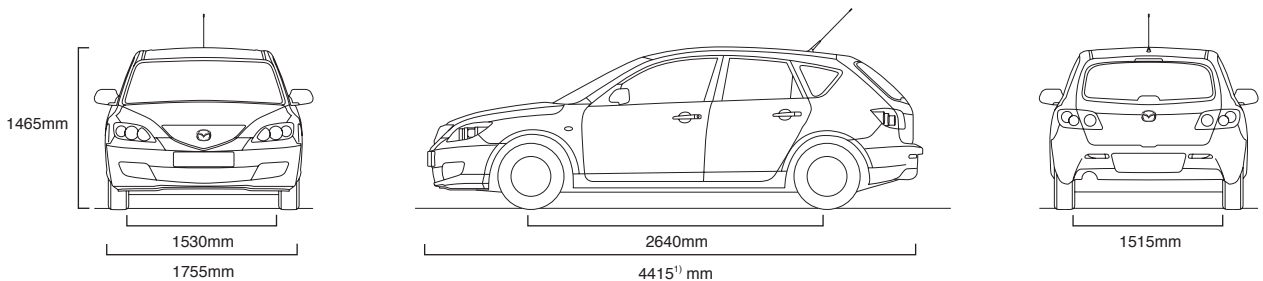
¹⁾ Fuel consumption and CO₂ emissions values according to 80/1268 EWG (1999/100/EC).

Technical Data

Dimensions and Weights

	1.4 MZR	1.6 MZR	1.6 MZR Activematic	2.0 MZR	1.6 MZ-CD (90ps)	1.6 MZ-CD (109ps)	2.0 MZ-CD (143ps)
Hatchback							
Overall length / width / height (mm)	4415 / 1755 / 1465	4440 ¹⁾ / 1755 / 1465	4440 ¹⁾ / 1755 / 1465	4435 / 1755 / 1465	4415 / 1755 / 1765	4440 / 1755 / 1465	4435 / 1755 / 1465
Ground clearance between the axles – unladen (mm)	160	160	160	160	160	160	160
Front track / Rear track (mm)				1530 / 1515			
Wheelbase (mm)	2640	2640	2640	2640	2640	2640	2640
Front headroom / leg room / shoulder room (mm)				994 / 1045 / 1394			
Rear headroom / leg room / shoulder room (mm)				976 / 922 / 1371			
Cargo volume, acc. to VDA (l)	5-seat mode (to belt line)	346	346	346	346	346	346
	2-seat mode (to belt line)	675	675	675	675	675	675
Ventilated front disc diameter (mm)	278	278	278	300	278	278	300
Rear disc diameter (mm)	265	265	265	280	265	265	280
Kerb weight (kg) incl. driver (75kg) (min)	1265	1265	1290	1335	1345	1350	1485
Permitted gross vehicle weight (kg)	1715	1725	1750	1790	1800	1825	1945
Permitted axle load, front / rear (kg)	865 / 850	870 / 855	895 / 855	930 / 860	950 / 850	970 / 855	1085 / 860
Towing limit (kg):	Unbraked	550	550	550	600	600	600
	Braked (8% gradient)	1200	1500	1500	1600	1600	1700
	Braked (12% gradient)	900	1200	1200	1300	1300	1500
Maximum roof load (kg)	75	75	75	75	75	75	75

¹⁾ Overall length for the 1.6 5dr petrol Takara model is 4440mm and 1.6 5dr Sport petrol model is 4435mm.



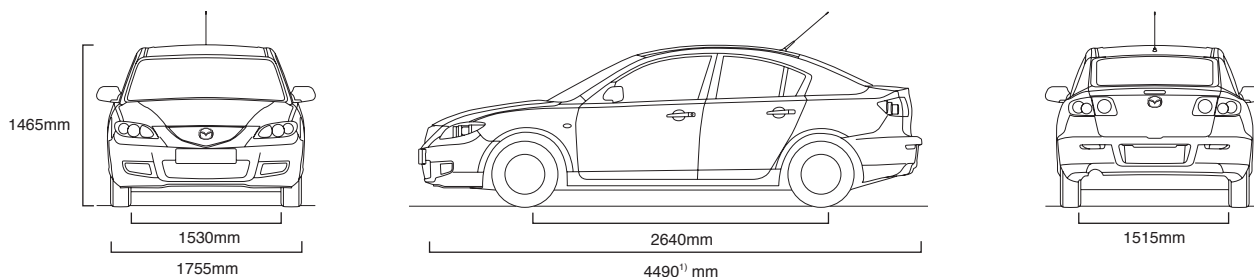
Technical Data

Dimensions and Weights

	1.6 MZR	1.6 MZR Activematic	2.0 MZR
Saloon			
Overall length / width / height (mm)	4490 ¹⁾ / 1755 / 1465	4490 ¹⁾ / 1755 / 1465	4515 / 1755 / 1465
Ground clearance between the axles – unladen (mm)	160	160	160
Front track / Rear track (mm)	—————	1530 / 1515	—————
Wheelbase (mm)	2640	2640	2640
Front headroom / leg room / shoulder room (mm)	—————	994 / 1045 / 1394	—————
Rear headroom / leg room / shoulder room (mm)	—————	951 / 922 / 1371	—————
Cargo volume, acc. to VDA (l) 5-seat mode (to belt line)	413	413	413
Ventilated front disc diameter (mm)	278	278	300
Rear disc diameter (mm)	265	265	280
Kerb weight (kg) incl. driver (75kg) (min)	1250	1275	1320
Permitted gross vehicle weight (kg)	1710	1730	1770
Permitted axle load, front / rear (kg)	875 / 835	895 / 835	930 / 840
Towing limit (kg): Unbraked	550	550	550 ²⁾
Braked (8% gradient)	1500	1500	1600 ²⁾
Braked (12% gradient)	1200	1200	1300 ²⁾
Maximum roof load (kg)	75	75	75

¹⁾ Overall length for the 1.6 4dr petrol Takara model is 4490mm and 1.6 4dr Sport petrol model is 4515mm.

²⁾ Towing capability not available on Sport models.



Equipment

Safety and Security

	For image, see pg	S	Takara	1.6 Sport	2.0 Sport
Mazda Advanced Impact Distribution and Absorption System engineered 'triple H' body structure to help protect occupants from impact forces	23	●	●	●	●
Supplementary Restraint System (SRS) – Central control unit and crush sensors, front seatbelt pre-tensioners, load-limiters and airbag system		●	●	●	●
Four-Wheel Anti-lock Braking System (4W-ABS) with Electronic Brake-force Distribution (EBD) and Emergency Brake Assist (EBA)	23	●	●	●	●
Dynamic Stability Control (DSC) with Traction Control System (TCS)	29	–	–	●	●
Driver and front passenger airbags	22	●	●	●	●
Front side airbags	22	●	●	●	●
Front and rear curtain airbags	22	–	●	●	●
Front and rear seatbelt reminder system with audible 'unbuckle' warning	27	●	●	●	●
Seatbelts: Front, 3-point (ELR) x 2 with pre-tensioner		●	●	●	●
Rear, 3-point (ELR) x 3		●	●	●	●
ISOFIX child seat anchorage: Attached to outer rear seats		●	●	●	●
Thatcham Category 1 alarm and immobiliser system		●	●	●	●

Additional Safety and Security Options

Baby and child seats: Baby Safe ISOFIX Plus (up to 13kg)	23	Please contact your dealer for further information and availability.
Baby Safe Plus (up to 13kg)	38	
ISOFIX Duo Plus (9-18kg)	38	
Kid Plus (15-36kg)	38	
Passenger airbag cut-off switch		

Exterior

Tyres and wheels: 195/65 R15 with 6.0J 15" steel wheels with plastic wheel covers		●	–	–	–
205/55 R16 with 6.5J 16" alloy wheels		–	●	–	–
205/50 R17 with 6.5J 17" alloy wheels		–	–	●	●
Temporary size spare wheel		●	●	●	●
Body-coloured bumpers, front and rear		●	●	●	●
Sports styling with body-coloured sports grille, sports front bumper and roof spoiler (hatchback) or boot lip spoiler (saloon)		–	●	–	–
Sports styling with body-coloured sports grille, sports front and rear bumpers, side skirts, (hatchback) or boot lip spoiler (saloon)		–	–	●	●
Bodyside mouldings: Black		●	–	–	–
Body-coloured		–	●	●	●
Door handles: Black		●	–	–	–
Body-coloured		–	●	●	●
Exhaust: Chrome exhaust trim (only available on 1.6 and 2.0 MZR petrol models)		–	–	●	●
Privacy glass		–	–	●	●
Wipers: Front, 3-speed with intermittent wipe and electric wash		●	●	–	–
Front, automatic with rain sensor (tied to light sensor)		–	–	●	●
Rear, 2-speed with intermittent wipe (hatchback only)		●	●	●	●

● = Standard



Equipment

Exterior		For image, see pg	S	Takara	1.6 Sport	2.0 Sport
Headlights:	Halogen		●	●	–	–
	Xenon, with automatic headlight levelling and cleaning		–	–	●	●
Light sensor (auto lights on)			–	–	●	●
Front fog lights	Rectangular shape	27	–	●	●	●
Rear lights:	LED technology	6	–	–	●	●
High-mounted rear brake light			●	●	●	●
Rear fog light			●	●	●	●
Door mirrors:	Electrically adjustable and heated, black housings, driver's wide angle		●	–	–	–
	Electrically adjustable and heated, body-coloured housings, driver's wide angle		–	●	●	●
Metallic / Mica paint		51	○	○	○	○

Additional Exterior Options

Tyres and wheels:	195/65 R15 with 6.0J 15" 5-spoke design alloy wheels (Design 31) (not available on 2.0 MZR)	31	Please contact your dealer for further information and availability.
	195/65 R15 with 6.0J 15" 5-spoke design alloy wheels (Design 32) (not available on 2.0 MZR)	31	
	205/55 R16 with 6.5J 16" 5-spoke design alloy wheels (Design 32)	31	
	205/55 R16 with 6.5J 16" 5-spoke design alloy wheels (Design 33)	31	
	205/50 R17 with 6.5J 17" 10-spoke alloy wheels (Design 34)	31	
Lowering suspension by Eibach		32	
Bumpers, front and rear:	Black front and rear bumper corner protector (not available with Sports styling pack or when vehicle is fitted with parking sensors)	39	
	Rear step bumper protector (not available with Sports styling pack)	39	
Sports styling pack with body-coloured sports grille, sports front and rear bumpers, side skirts, and roof spoiler (hatchback) or boot lip spoiler (saloon)*			
B-pillar trim:	Carbon finish		
Side indicator ring:	Chrome finish	30	
Chrome exhaust trim		32	
Rear mudflaps (not available with Sports styling pack)			
Front fog lights:	Oval shape (not available with Sports styling pack)		
Park Assist sensor:	Rear		
	Front and rear	37	
Chrome finish covers for standard-shaped door mirrors		30	
Sports-style shape, electrically adjustable and heated, driver's wide angle (only available for models with standard shape electrically adjustable and heated mirrors)		32	
Roof carrier system:	Roof carrier, base	37	
	Attachment for skis / snowboards	36	
	Attachment for bicycles	36 / 37	
	Attachment for kayak		
	Attachment for surfboard		
Roof box			
Tow bar:	Detachable (not available on saloon models with Sports styling pack or when vehicle is fitted with lowering kit)	37	

● = Standard; ○ = Option at extra cost.

* As accessory, Sports styling pack requires chrome exhaust trim for petrol models and an extra front fog light switch for vehicles without standard front fog lights (excludes mudflaps and, on saloon, tow bar).

Equipment

Comfort and Convenience

		For image, see pg	S	Takara	1.6 Sport	2.0 Sport
Remote central locking with deadlocking (with jack-knife type retractable key)		27	●	●	●	●
Power steering			●	●	●	●
Cruise control:	Switches on steering wheel	21 / 29	–	–	–	●
Electric windows:	Front	27	●	–	–	–
	Front and rear with one-touch auto down and global opening / closing	27	–	●	●	●
Air conditioning:	Manual		○	–	–	–
	Automatic climate control	27	–	●	●	●
Sunvisors:	Driver's with covered vanity mirror and ticket holder		●	●	●	●
	Passenger's with covered vanity mirror and ticket holder		●	●	●	●
	Illuminated vanity mirrors		–	●	●	●
Remote opening fuel cap			●	●	●	●

Additional Comfort and Convenience Options

Car heater by Webasto						
Front and rear floor mats:	Carpet floor mat, 'standard', black, with 'Mazda3' logo					
	Carpet floor mat, 'Luxury', black, with 'Mazda3' logo	38				
Sunblinds:	For side rear windows (hatchback only), roller type	39				
	For rear window (hatchback only), roller type					

Please contact your dealer for further information and availability.

Interior Features

Seats and integral head restraint:	Driver's, dial reclining and height adjustment		●	●	●	●
	Driver's, lumbar adjustment		–	●	●	●
	Leather trim*	16 / 50	–	–	–	●
Rear seats:	60/40 fold down	21	●	●	●	●
	Centre armrest		–	●	●	●
Steering wheel:	Leather-wrapped		–	●	●	●
	Tilt and height adjustment		●	●	●	●
Gear knob:	Leather-covered		–	●	●	●
Door inner handles:	Front and rear, silver		–	●	●	●
Door switch panel, insert:	Flano black finish		–	●	●	●
Grab handle, front passenger's and two rear with coat hooks			●	●	●	●
Audio systems:	AM/FM modular radio, four speakers		●	●	–	–
	MP3 compatible single CD player with AUX jack		●	–	–	–
	6-disc autochanger with AUX jack	29	–	●	–	–
	Bose® premium audio system (with seven speakers, Richbass woofer, digital amplifier with five channels of customised equalisation), 6-disc autochanger with AUX jack	18 / 19	–	–	●	●
	Steering wheel-mounted remote audio controls	17	–	●	●	●

● = Standard; ○ = Option at extra cost

*Leather refers to centre seat facing and side supports.

Equipment

Interior Features

		For image, see pg	S	Takara	1.6 Sport	2.0 Sport
Meter set:	Tachometer		●	●	●	●
	Fuel gauge		●	●	●	●
	Water temperature gauge		●	●	●	●
	Trip computer		–	●	●	●
	Exterior temperature thermometer, digital		●	●	●	●
	White finish dials with amber-red / blue illumination		●	●	–	–
	Blackout finish dials with amber-red / blue illumination	29	–	–	●	●
Panel light control with dimmer		●	●	●	●	
Digital clock		●	●	●	●	
Cigarette lighter		●	●	●	●	
Headlight on reminder (sound warning)		●	●	●	●	
Front centre console with storage box; hinged storage tray and lid; two lidded cup holders	21	●	●	●	●	
Further storage spaces:	Glovebox, lockable with illumination		●	●	●	●
	Seatback pocket (passenger side)		●	●	●	●
	Door pockets (front doors only)		●	●	●	●
Front ashtray, illuminated		●	●	●	●	
Interior light, dome with integral spotlight		–	●	●	●	
Luggage compartment light		●	●	●	●	
Inner mirror (day / night)		●	●	●	●	
Heater ducts, rear		●	●	●	●	
Pollen filter		●	●	●	●	

● = Standard

Additional Interior Options

Gear knob:	Leather, titanium finish (not available with Activematic transmission)	34	Please contact your dealer for further information and availability.
	Leather, piano black finish (not available with Activematic transmission)		
Stuff plates:	Front, with integrated metal insert	34	
Parking brake cover:	Aluminium, titanium finish	34	
	Aluminium, piano black finish		
Air vent bezel:	Piano black finish	34	
Audio systems:	CD player		
	6-CD MP3 changer module (not available if specified with Bose® sound system)		
Satellite navigation system:	SmartNav satellite navigation system	36	
Luggage compartment:	Anti-slip mat	38	
	Trunk liner	38	
	Trunk net and hooks (only available for hatchback)	39	
	Trunk storage shelf (only available for hatchback)	39	
	Dog guard (only available for hatchback)	38 / 39	
Baby care mirror		39	

Colours and Seat Trims



Grey cloth (S)



Black / Red cloth (Takara)



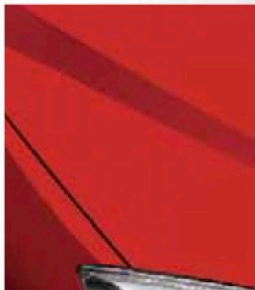
Black cloth (1.6 Sport)



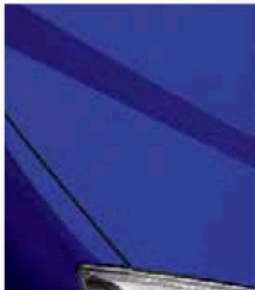
Black leather (2.0 Sport)

Model	S	Takara	1.6 Sport	2.0 Sport
Trim	Grey cloth	Black / Red cloth	Black cloth	Black leather
Solid Body Colours				
True Red	■	■	■	■
Mica and Metallic Body Colours*				
Aurora Blue Mica	■	■	■	■
Black Mica	■	■	■	■
Copper Red Mica	■	■	■	■
Icy Blue Metallic	■	■	■	■
Metropolitan Grey Mica	■	■	■	■
Stormy Blue Mica	■	■	■	■
Sunlight Silver Metallic	■	■	■	■
Crystal White Pearlescent	—	—	■	■

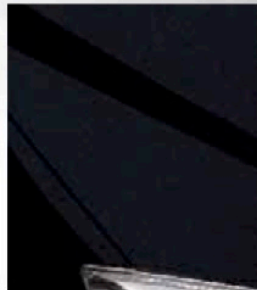
■ = Available. * Option at extra cost.



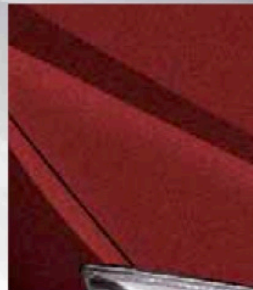
True Red



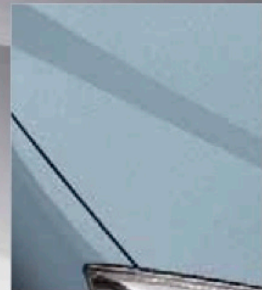
Aurora Blue Mica



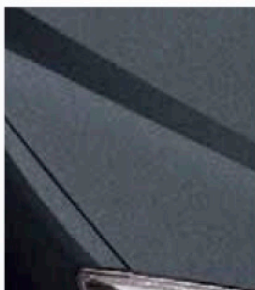
Black Mica



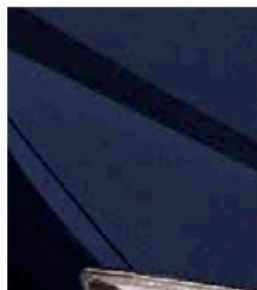
Copper Red Mica



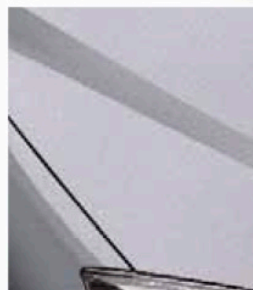
Icy Blue Metallic



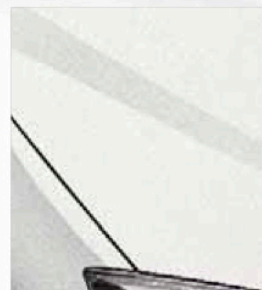
Metropolitan Grey Mica



Stormy Blue Mica



Sunlight Silver Metallic



Crystal White Pearlescent
(Available on Sport models only)



Warranty Plus – 3-Year Cover

Every Mazda is designed and built to the highest standards of performance, comfort and reliability. For your further reassurance, Mazda also provides a full 3-year / 60,000 mile¹ warranty cover, including Mazda European Assistance, 3-year paintwork warranty and a 12-year anti-perforation warranty. ¹There is no mileage limit during the first year of the warranty.

Mazda Momentum – New Vehicle Extended Warranty

At any time during the manufacturer's warranty period, you may purchase a Mazda Momentum extended warranty package. Three options are available. Your Mazda dealer will be pleased to provide you with details.

Mazda Business Partner

As a Mazda corporate customer, you'll find that Mazda vehicles are designed to fulfil the diverse needs of a modern company. Our corporate service offers attractive purchase prices, low running costs and market-driven residual values, resulting in extremely competitive ownership costs.

Mazda Digital Service Record

The Mazda Digital Service Record (DSR) system provides increased security against counterfeit service documents and odometer tampering, and makes it easy to keep the service history up to date. Stored on a central database, the DSR replaces the traditional paper service book and ensures a secure, accurate and permanent service history for the life of the vehicle.

Your Mazda dealer:

Mazda Motors UK Limited reserves the right to introduce changes in specification and equipment due to its ongoing product development. Colour and trim samples shown in this brochure may vary from the actual colours because of limitations in the printing process. It is recommended that you consult your Mazda dealer when referring to these.

Bose®, the Bose logo, AudioPilot®, Nd®, Richbass® and Nd®Richbass® are registered trademarks of Bose Corporation in the U.S. and other countries. Used with permission.

May 2008

**Internet: www.mazda.co.uk
Mazda Helpline: 08457 48 48 48**