

MAZDA2

16



PRICE AND SPECIFICATION GUIDE



WELCOME...

You want a car that is perfect for the city. Agile, compact, well equipped and just as at home nipping around town as it is on the motorway. The Mazda2 ticks all those boxes, plus it displays Mazda's award-winning Kodo: Soul of Motion design, provides an exquisitely crafted interior, driver centric cabin, and provides Mazda's famed driving experience.

The Mazda2 is not only stylish and fun to drive, but in combination with Mazda M Hybrid*, it produces excellent real world economy and low CO₂ emissions.

The Mazda2 will be sure to leave an impression, offering you the freedom of a compact city car without compromise. It's ready to effortlessly go whenever you like, to wherever you need to be.

Practical and well equipped

The Mazda2 is available in a choice of grades which are created to fit into your lifestyle. No matter if you opt for the SE-L or the range-topping GT Sport Tech, you will have a range of standard features including Mazda Connect infotainment, Apple CarPlay® and Android Auto™ connectivity, LED headlights and Cruise Control as well as a comfortable and driver centric cabin.



This Price & Specification Guide has been designed to enable you to discover more about the Mazda2 as well about its key features, what they do, and key technical information making it easy to find the details you need.

So what are you waiting for...



THE LATEST IN TECHNOLOGY & CONVENIENCE

MAZDA CONNECT

The latest in-car infotainment

Mazda Connect allows for seamless connectivity between you and your Mazda. Information is displayed on a beautiful & clear 8-inch central screen which is perfectly positioned at eye level.

Access vehicle information and settings, entertainment options including DAB Radio, connect your smartphone via Bluetooth to make and receive calls, access your phonebook, and access the European wide Navigation system which comes with 3-years free map updates.



MULTIMEDIA COMMANDER

Easy to use, driver centric, eyes on the road

The Multimedia Commander provides simple and easy access to the Mazda Connect infotainment system. The tactile feel plays to the senses allowing for ease of use whilst on the move, and more importantly, allows you to keep your eyes on the road.



APPLE CARPLAY® & ANDROID AUTO™ Smarter, safer way to use your smartphone

With Apple CarPlay®, get easy access to Apple Music, Maps, Messages and make phone calls with Siri through the car's Multimedia Commander or voice commands.

Android Auto™ also allows you to access your favourite music and messaging apps, Google Maps and Google Play Music. Google Assistant voice control helps you send and receive messages, make calls, get directions and plan your day while you keep your eyes safely on the road.

COLOUR ACTIVE DRIVING DISPLAY Key information displayed at your convenience

Fitted as standard to GT Sport & GT Sport Tech models, the colour Active Driving Display is a technology feature that projects key information directly within in the driver's line of sight, which includes vehicle speed, cruise control settings and will provide Satellite Navigation directions in relation to the Mazda Navigation System.



BUILT FOR THE CITY

THE PERFECT SIZE TO FIT INTO CITY LIFE

A practical supermini that fits into your everyday needs. Whilst the Mazda2 is able to fit into those tight city parking spaces, it remains bright and airy on the inside to provide a feeling of spaciousness for both you and your passengers.

The range of naturally aspirated engines further enhances the Mazda2's drivability and smoothness to help take away the stress of city life.



MAZDA2 MHEV* PRICING

e-SKYACTIV G Petrol*

	PRICE	VAT	P11D VALUE	FIRST YEAR VED & DVLA FIRST REG FEE*	ESTIMATED 'ON THE ROAD' RETAIL	CO ₂ EMISSIONS (G/KM)~	BIK TAX (%)^	2022/23 MONTHLY TAX LIABILITY 20%/40%	INSURANCE GROUP
Mazda2 75ps SE-L*	£14,150.00	£2,830.00	£16,980	£225	£17,205	109	26%	£74/£147	14E
Mazda2 90ps SE-L	£14,900.00	£2,980.00	£17,880	£225	£18,105	107	26%	£77/£155	18A
Mazda2 90ps Sport	£15,608.33	£3,121.67	£18,730	£225	£18,955	107	26%	£81/£162	19A
Mazda2 90ps Sport Auto*	£16,858.33	£3,371.67	£20,230	£245	£20,475	122	29%	£98/£196	15E
Mazda2 90ps GT Sport	£16,441.67	£3,288.33	£19,730	£225	£19,955	107	26%	£85/£171	20A
Mazda2 90ps GT Sport Auto*	£17,691.67	£3,538.33	£21,230	£245	£21,475	122	29%	£103/£205	15E
Mazda2 115ps GT Sport Tech	£17,775.00	£3,555.00	£21,330	£245	£21,575	113	27%	£96/£192	22A

*e-Skyactiv G & MHEV feature on 90ps manual and 115ps manual models only. 75ps manual & 90ps automatic models are Skyactiv-G & Non-MHEV.

~Figures shown are for comparability purposes; only compare fuel consumption and CO₂ figures with other cars tested to the same technical procedures. These figures may not reflect real life driving results, which will depend upon a number of factors including the accessories fitted (post-registration), variations in weather, driving styles and vehicle load. All figures quoted are derived from the latest WLTP test cycle.

MAZDA2 GRADE HIGHLIGHTS

75PS SE-L from £17,205

STANDARD FEATURES:

EXTERIOR

- 15" Silver alloy wheels
- Body coloured electrically-adjustable, heated, auto power-folding door mirrors
- Front grille in Satin black with Chrome finish Signature wing
- Front rain-sensing wipers
- LED Headlights with auto levelling
- Coming home / leaving home lights
- Dusk sensing headlights
- Halogen daytime running lights
- Rear parking sensors

INTERIOR

- 60:40 fold flat rear seats
- Leather-wrapped gear shift
- Leather-wrapped handbrake lever
- Leather-wrapped steering wheel
- Premium Brown cloth seat trim with Black inserts

INFOTAINMENT

- AM / FM / DAB radio, with 6 speakers and AUX input
- Integrated Bluetooth®
- Mazda Connect multimedia system with 8" Colour centre display and Multimedia Commander
- Mazda Navigation System with European mapping and 3-years free map updates
- USB inputs
- Wired Apple CarPlay® & wired Android Auto™

COMFORT AND CONVENIENCE

- Auto-dimming rear view mirror
- Climate-control air-conditioning
- Cruise Control with adjustable speed limiter
- Electric windows
- Mazda M Hybrid (90ps models only)

SAFETY AND SECURITY

- Hill Launch Assist
- Remote central locking with deadlocking

90PS SE-L from £18,105

IN ADDITION TO 75ps SE-L, 90PS SE-L ADDS:

SAFETY AND SECURITY

- Advanced Smart City Brake Support - Front
- Lane-keep Assist System with Lane Departure Warning System



Model shown: Mazda2 75ps SE-L in Deep Crimson.

SPORT from £18,955

IN ADDITION TO 90ps SE-L, SPORT ADDS:

EXTERIOR

- 16" Bright Alloy Wheels
- Front grille in Gloss black with Chrome finish Signature wing
- Rear privacy glass
- Signature LED daytime running lights
- Shark fin antenna

INTERIOR

- Premium Dark Blue cloth trim
- Steering wheel mounted paddle shift (automatic transmission models only)

INFOTAINMENT

- Wireless Apple CarPlay® & wired Android Auto™

COMFORT AND CONVENIENCE

- Drive selection switch (automatic transmission models only)
- Mazda M Hybrid (manual transmission models only)

SAFETY AND SECURITY

- Smart keyless entry



Model shown: Mazda2 90ps Sport in Machine Grey.

Due to specification updates, please confirm with your dealer whether the vehicle you will receive is equipped with specification detailed in this guide. Pricing and specification are subject to change. Please speak with your local dealer for latest pricing information.

GT SPORT from £19,955

IN ADDITION TO SPORT, GT SPORT ADDS:

INTERIOR

- Blue/grey leather seat trim* with black Granlux® inserts
- Heated front seats
- Heated steering wheel

COMFORT AND CONVENIENCE

- Colour Active Driving Display (Head-Up display)
- Drive selection switch (automatic transmission models only)
- Mazda M Hybrid (manual transmission models only)
- Reversing camera



Model shown: Mazda2 90ps GT Sport in Platinum Quartz.

GT SPORT TECH from £21,575

IN ADDITION TO GT SPORT, GT SPORT TECH ADDS:

EXTERIOR

- Front and rear parking sensors
- Adaptive LED Headlights

COMFORT AND CONVENIENCE

- 360° View Monitor (front, rear and side cameras)
- Mazda M Hybrid

SAFETY AND SECURITY

- Blind Spot Monitoring with Rear Cross Traffic Alert
- Driver Attention Alert
- Smart City Brake Support – Rear



Model shown: Mazda2 115ps GT Sport Tech in Soul Red Crystal.

*Refers to centre seat facing and side supports.

Pricing and specification are subject to change. Please speak with your local dealer for latest pricing information.

MAZDA2 INTERIOR TRIMS AND COLOURATION



PREMIUM BROWN CLOTH SEAT TRIM WITH BLACK INSERTS
(Standard on SE-L only)



PREMIUM DARK BLUE CLOTH SEAT TRIM
(Standard on Sport only)



BLUE/GREY LEATHER[^] SEAT TRIM WITH GRANUX[®] INSERTS
(Standard on GT Sport & GT Sport Tech only)



[^] Leather refers to centre seat facing and side supports.

MAZDA2 PAINT FINISH OPTIONS



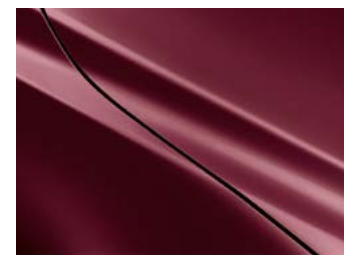
ARCTIC WHITE



SNOWFLAKE WHITE



CERAMIC



DEEP CRIMSON



PLATINUM QUARTZ



SONIC SILVER



SOUL RED CRYSTAL



DEEP CRYSTAL BLUE



POLYMETAL GREY



JET BLACK



ETERNAL BLUE



MACHINE GREY

Exterior Colours

	BASIC PRICE	VAT	RRP
Arctic White	£0	£0	£0
Snowflake White / Ceramic / Deep Crimson / Platinum Quartz / Sonic Silver / Deep Crystal Blue / Polymetal Grey / Jet Black / Eternal Blue	£466.67	£93.33	£560
Machine Grey	£566.67	£113.33	£680
Soul Red Crystal	£666.67	£133.33	£800

Mazda Motors UK reserves the right to introduce changes in pricing, specification and equipment due to its ongoing product development. Colour and trim samples shown in this digital brochure may vary from the actual colours because of the variations of resolutions and colours found in various screen displays, and if printed, limitations within the printing process. Models shown may not be to UK specification. It is recommended that you consult your Mazda dealer when referring to these.

MAZDA2 ALLOY WHEELS



15" SILVER ALLOY WHEELS
Standard on SE-L grade



16" BRIGHT ALLOY WHEELS
Standard on SPORT, GT SPORT & GT Sport Tech grades

ACCESSORY ALLOY WHEELS

We have a range accessories available including a range of accessory alloy wheels, so that you can make your Mazda2 more individual to you.

For more information on the entire range of accessories we retail, please [CLICK HERE](#), select your vehicle and visit the 'Options & Accessories' section.



Options & Accessories: A small selection of our range of accessories are shown within this Price and Specification guide. For more information on the entire range of accessories we retail, please visit www.mazda.co.uk/configurator, select your vehicle and visit the 'Options & Accessories' section. The price shown is a non-binding recommendation of Mazda Motors UK, is subject to change and may not include extras. Alloy wheel prices do not include tyres. Accessory fitment costs may differ between Mazda dealers. For further information about Mazda Genuine Accessories and latest pricing including any fitment cost differences please contact your local Mazda dealer.

MAZDA2 SPECIFICATIONS

Exterior

		75ps SE-L	90ps SE-L	Sport	GT Sport	GT Sport Tech
Bumpers:	Front body coloured with Black lower bezel	•	•	-	-	-
	Front body coloured with Bright lower bezel	-	-	•	•	•
	Rear body coloured with Black lower mouldings	•	•	-	-	-
	Rear body coloured with Bright lower mouldings	-	-	•	•	•
Door mirrors:	Body coloured electrically-adjustable, heated, auto power-folding door mirrors	•	•	•	•	•
Front Grille:	Satin Black finish	•	•	-	-	-
	Gloss Black finish	-	-	•	•	•
	Chrome finish signature wing	•	•	•	•	•
Headlights:	LED, with auto headlight levelling	•	•	•	•	•
	Coming home / leaving home lights	•	•	•	•	•
	Dusk-sensing headlights	•	•	•	•	•
	Halogen daytime running lights	•	•	-	-	-
	Signature LED daytime running lights	-	-	•	•	•
	Adaptive LED Headlights (ALH)	-	-	-	-	•
Parking sensors (audible warning):	Rear	•	•	•	•	•
	Front	-	-	-	-	•
Privacy glass:	Rear side and rear windows	-	-	•	•	•
Shark-fin antenna:	Body coloured	-	-	•	•	•
Tailpipes:	Single - Chrome tip	-	-	•	•	•
Wheels & tyres:	15" Silver alloy wheels with 185/65 R15 tyres	•	•	-	-	-
	16" Bright alloy wheels with 185/60 R16 tyres	-	-	•	•	•
Wipers:	Front, rain-sensing with adjustable sensitivity and speed	•	•	•	•	•
	Rear	•	•	•	•	•

• = Standard equipment; - = Not available; ○ = Option available at additional cost.

Interior

		75ps SE-L	90ps SE-L	Sport	GT Sport	GT Sport Tech
Dashboard panel:	Black, gloss	•	•	-	-	-
	Dark Blue, soft-touch	-	-	•	-	-
	Blue/Grey, soft-touch	-	-	-	•	•
Gear shift:	Leather-wrapped	•	•	•	•	•
Grab handles:	Front passenger and two rear, with coat hooks	•	•	•	•	•
Handbrake lever:	Leather-wrapped	•	•	•	•	•
Interior trim:	Premium Brown cloth seat trim with Black inserts	•	•	-	-	-
	Premium Dark Blue cloth trim	-	-	•	-	-
	Blue/Grey leather seat trim with Black Granlux® inserts*	-	-	-	•	•
Meter set display:	Trip computer	•	•	•	•	•
	Analogue speedometer / digital rev counter	•	•	•	-	-
	Digital speedometer / analogue rev counter	-	-	-	•	•
Seats (Front):	Driver's and Passenger's seat, manual slide, recline and height adjustment	•	•	•	•	•
	Heated with 3-stage setting	-	-	-	•	•
Seats (Rear):	60:40 split fold down rear seats	•	•	•	•	•
	Three height-adjustable head restraints	•	•	•	•	•
Steering wheel:	Leather-wrapped	•	•	•	•	•
	Telescopic and tilt adjustment	•	•	•	•	•
	Heated	-	-	-	•	•
	Paddle shift for automatic transmission	-	-	•	•	-
Storage spaces:	Centre storage with two cupholders	•	•	•	•	•
	Door pockets (driver and front passenger)	•	•	•	•	•
	Glovebox	•	•	•	•	•
	Seatback pocket (located on rear of front passenger seat)	•	•	•	•	•

• = Standard equipment; - = Not available; O = Option available at additional cost.

* Leather refers to centre seat facing and side supports.

Infotainment

		75ps SE-L	90ps SE-L	Sport	GT Sport	GT Sport Tech
Apple CarPlay® & Android Auto™	Wired - In-car assistant systems that let you access certain features of your phone through Mazda Connect	•	•	-	-	-
	Wireless Apple CarPlay® & wired Android Auto™ - In-car assistant systems that let you access certain features of your phone through Mazda Connect	-	-	•	•	•
Integrated Bluetooth®:	Allows audio transfer from Bluetooth® devices, hands-free calling and easy access to phone contacts via steering wheel controls or Multimedia Commander	•	•	•	•	•
Mazda Connect (Multimedia System):	AM / FM / DAB radio with 6 speakers	•	•	•	•	•
	8" Colour touch-screen centre display	•	•	•	•	•
	Steering wheel-mounted audio and Bluetooth® controls	•	•	•	•	•
	AUX input	•	•	•	•	•
	USB input x 2	•	•	•	•	•
Mazda Navigation System:	European mapping with alternative route calculations, point of interest search and 3-years free map updates	•	•	•	•	•
Multimedia Commander:	Located between the driver and front passenger, the Multimedia Commander allows easy control of the advanced connectivity and infotainment system, with information displayed on the 8" colour touch-screen, includes a separate volume control dial	•	•	•	•	•

• = Standard equipment; - = Not available.

Please refer to www.mazdahandsfree.co.uk for the latest information regarding compatibility and functionality of mobile devices.

Comfort and Convenience

		75ps SE-L	90ps SE-L	Sport	GT Sport	GT Sport Tech
Air-conditioning:	Climate-control air-conditioning	•	•	•	•	•
Cruise control with manual speed adjustment and adjustable speed limiter		•	•	•	•	•
Drive selection switch (Automatic only):	When the 'Sport' mode is selected, vehicle's response against accelerator operation is enhanced. This provides additional quick acceleration which may be needed to safely make manoeuvres such as lane changes, merging onto motorways, or passing other vehicles	-	-	•	•	-
Electric windows:	Front and rear, with one-touch auto down / up for driver's window	•	•	•	•	•
Engine start / stop button		•	•	•	•	•
Gear-shift indicator		•	•	•	•	•
G-Vectoring Control Plus (GVC Plus):	Provides better handling and a smoother ride. Aids in emergency avoidance manoeuvres and offers more control in various situations.	•	•	•	•	•
Head-up Display:	Colour Active Driving Display (head-up display) featuring vehicle speed including warnings, turn-by-turn navigation and Cruise Control information.	-	-	-	•	•
Interior Lighting:	Interior courtesy light, with integrated spotlight	•	•	•	•	•
Interior Mirror:	Auto-dimming rear-view mirror	•	•	•	•	•
Luggage compartment:	Light	•	•	•	•	•
Parking aids:	Reversing camera	-	-	-	•	-
	360° View Monitor (front, rear and side cameras)	-	-	-	-	•
Sun visors:	Driver's and front passenger's with covered vanity mirror and driver's ticket holder	•	•	•	•	•

• = Standard equipment; - = Not available.

Due to specification updates, please confirm with your dealer whether the vehicle you will receive is equipped with specification detailed in this guide.

Safety and Security

		75ps SE-L	90ps SE-L	Sport	GT Sport	GT Sport Tech
Airbags:	Front dual stage driver and single stage front passenger	•	•	•	•	•
	Front side airbags	•	•	•	•	•
	Front and rear curtain airbags	•	•	•	•	•
	Front passenger airbag cut-off switch	•	•	•	•	•
Anti-lock Braking System (ABS)		•	•	•	•	•
Blind Spot Monitoring (BSM) with Rear Cross Traffic Alert (RCTA):	Uses a system of sensors to alert the driver when a vehicle enters a blind spot	-	-	-	-	•
Driver Attention Alert (DAA):	Designed to reduce accidents caused by inattentiveness due to driver fatigue. The system watches inputs and the vehicle's movements in the early stages before fatigue is a factor.	-	-	-	-	•
Dynamic Stability Control (DSC)		•	•	•	•	•
Emergency Stop Signalling system (ESS)		•	•	•	•	•
Emergency tyre repair kit		•	•	•	•	•
Hill Launch Assist (HLA):	When starting off from an incline, HLA helps prevent the car from rolling backwards when the driver moves their foot from the brake to the accelerator pedal by maintaining an automatic brake	•	•	•	•	•
ISOFIX child seat anchorage; attached to outer rear seats		•	•	•	•	•
Lane-keep Assist System (LAS) with Lane Departure Warning System (LDWS):	The system detects the line markings on the road surface, and instantly warns you in case of unintentional lane departure, whilst also assisting to steer the vehicle to keep within its lane	-	•	•	•	•
Pre-crash safety: Advanced Smart City Brake Support (SCBS)	Front (including autonomous emergency braking) (SCBS)	-	•	•	•	•
	Rear (SCBS-R)	-	-	-	-	•
Remote central locking with deadlocking		•	•	•	•	•
Smart keyless entry:	Allows opening and locking of the vehicle without removing the key from your pocket or bag	-	-	•	•	•
Seatbelts:	Front, 3-point (ELR) x 2 with pre-tensioners	•	•	•	•	•
	Rear, 3-point (ELR) x 3	•	•	•	•	•
Seatbelt reminder audible warning:	Driver, passenger and rear seats	•	•	•	•	•
Thatcham Accredited alarm and immobiliser		•	•	•	•	•
Traction Control System (TCS)		•	•	•	•	•
Tyre Pressure Monitoring System (TPMS)		•	•	•	•	•

• = Standard equipment; - = Not available.

MAZDA2 TECHNICAL INFORMATION

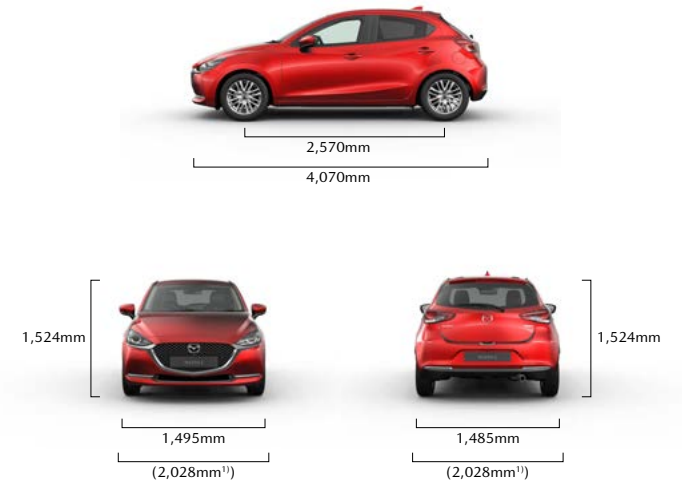
Model availability	1.5 SKYACTIV-G Petrol	1.5 e-SKYACTIV G Petrol	1.5 SKYACTIV-G Petrol	1.5 e-SKYACTIV G Petrol
	75ps Manual	90ps Manual	90ps Automatic	115ps Manual
SE-L	•	•	-	-
Sport	-	•	•	-
GT Sport	-	•	•	-
GT Sport Tech	-	-	-	•

Dimensions

Overall length / width ¹⁾ / height (mm)	4,070 / 1,695 (2,028) / 1,524	
Wheelbase (mm)	2,570	
Ground clearance between the axles – unladen (mm)	143	
Front track / Rear track (mm)	1,495 / 1,485	
Front headroom / leg room / shoulder room (mm)	984 / 1,063 / 1,352	
Rear headroom / leg room / shoulder room (mm)	945 / 881 / 1,273	
Cargo volume, acc. to VDA (l) ²⁾ :	5-seat mode to belt line including underfloor storage	280
	2-seat mode including underfloor storage	950
Brake Type - Front / Rear	Ventilated Disc / Drum	
Brake Dimensions (mm) - Front / Rear	258 / 200	
Steering		
Steering gear	Electric Power Assist Steering (Rack and Pinion)	
Wall-to-wall turning circle (M)	10.1m (15" alloys) / 10.4m (16" alloys)	

¹⁾ Vehicle width excludes mirrors. Figures in brackets are for width including mirrors.

²⁾ Includes underfloor storage.



5-door Hatchback	1.5 SKYACTIV-G Petrol		1.5 e-SKYACTIV G Petrol		1.5 SKYACTIV-G Petrol		1.5 e-SKYACTIV G Petrol		
	75ps Manual		90ps Manual		90ps Automatic		115ps Manual		
Displacement (cc)	1496		1496		1496		1496		
Bore x Stroke (mm)	74.5 x 85.8		74.5 x 85.8		74.5 x 85.8		74.5 x 85.8		
Valves per cylinder	4		4		4		4		
Compression ratio	15:1		15:1		15:1		15:1		
FUEL SAVING TECHNOLOGY									
i-stop (saves fuel by switching off the engine when the car stops)	•		•		•		•		
Mazda M Hybrid 24-volt battery to support the engine which helps improve your fuel economy and reduce emissions	-		•		-		•		
PERFORMANCE									
Maximum power output ps (KW) / rpm	75 (55) / 6,000		90 (66) / 6,000		90 (66) / 6,000		115 (85) /6,000		
Max. torque (Nm / rpm)	143/3,500		151/3,500		151/3,500		151/3,500		
Acceleration (0-62 mph in seconds)	11.3		9.8		12.1		9.1		
Top speed (mph)	106		114		110		124		
FUEL ECONOMY AND CO₂ EMISSIONS									
WLTP fuel consumption ¹⁾ mpg (l/100km)	Low	48.7 (5.8)		49.6 (5.7)		44.1 (6.4)		47.1 (6.0)	
	Medium	61.4 (4.6)		62.8 (4.5)		56.5 (5.0)		58.9 (4.8)	
	High	67.3 (4.2)		68.9 (4.1)		60.1 (4.7)		65.7 (4.3)	
	Extra High	55.4 (5.1)		55.4 (5.1)		47.9 (5.9)		53.3 (5.3)	
	Combined	58.9 (4.8)		60.1 (4.7)		52.3 (5.4)		56.5 (5.0)	
WLTP CO ₂ emissions ¹⁾ (g/km)	109		107		122		113		
EC emission level	Euro Stage6d								
Recommended fuel	Unleaded 95 RON								
Fuel tank capacity (litres)	44								
WEIGHTS									
Maximum Kerb weight (kg) incl. driver (75kg)	1,141		1,154		1,157		1,154		
Permitted gross vehicle weight (kg)	Total	1,532		1,540		1,549		1,540	
	Front/rear	804 / 728		819 / 721		827 / 722		819 / 721	
Towing limit ²⁾ (kg):	Braked	900		900		900		900	
	Unbraked	545		550		550		550	
Maximum roof load (kg)	50		50		50		50		

¹⁾ Figures shown are for comparability purposes; only compare fuel consumption and CO₂ figures with other cars tested to the same technical procedures. These figures may not reflect real life driving results, which will depend upon a number of factors including the accessories fitted (post-registration), variations in weather, driving styles and vehicle load. All figures quoted are derived from the latest WLTP test cycle.

²⁾ Towing capacity is based on a 12% gradient and tested in accordance with 92/21/EEC as amended by 95/48/EC.

MAZDA2 ACCESSORIES AND EQUIPMENT OVERVIEW

We know how complicated buying a new car can be when it comes to deciphering the latest technology. That's why we have taken the time to provide you with some clarity on what's available on the Mazda2, to help you make the right choice as to which grade will suit your lifestyle best.

Within this section we provide information on just some of our latest options & accessories, details on our engine & hybrid technology, as well as information on our Skyactiv-Vehicle Dynamics and our Advanced Safety Technology.

We don't only make cars that are involving and easy to operate, we do this with our Price & Specification guide too to enable you to make the best decision.

Then all that is left to do is to experience the Mazda2 for yourself. To find your local dealer and to arrange a Test Drive, [CLICK HERE](#)



OPTIONS & ACCESSORIES



BRILLIANT BLACK FRONT AIRDAM SKIRT
£376.88



BRILLIANT BLACK SIDE AIRDAM SKIRT
£333.89

BODY DECALS
£253.52



BRILLIANT BLACK SHARK FIN ANTENNA*
£145.31



BRILLIANT BLACK REAR ROOF SPOILER
£331.74



BLACK ALLOY WHEELS 16"
£1150.92

Options & Accessories: A small selection of our range of accessories are shown within this Price and Specification guide. For more information on the entire range of accessories we retail, please visit www.mazda.co.uk/configurator, select your vehicle and visit the 'Options & Accessories' section. The price shown is a non-binding recommendation of Mazda Motors UK, is subject to change and may not include extras such as painting. Alloy wheel prices do not include tyres. Accessory fitment costs may differ between Mazda dealers. For further information about Mazda Genuine Accessories and latest pricing including any fitment cost differences please contact your local Mazda dealer.

OPTIONS & ACCESSORIES



FRONT PARKING DISTANCE SENSORS
£346.38



ALUMINIUM PEDAL SET WITH ALLOY FOOT REST
MANUAL - £170.99
AUTOMATIC - £160.85



BOOT ORGANISER BOX
£82.56



SCUFF PLATES
£172.92



CENTRE ARM REST
£232.72



ROOF RACK*
£243.57

*Including price of roof mouldings.

Options & Accessories: A small selection of our range of accessories are shown within this Price and Specification guide. For more information on the entire range of accessories we retail, please visit www.mazda.co.uk/configurator, select your vehicle and visit the 'Options & Accessories' section. The price shown is a non-binding recommendation of Mazda Motors UK, is subject to change and may not include extras such as painting. Alloy wheel prices do not include tyres. Accessory fitment costs may differ between Mazda dealers. For further information about Mazda Genuine Accessories and latest pricing including any fitment cost differences please contact your local Mazda dealer.

SKYACTIV ENGINE TECHNOLOGY

SKYACTIV G

The 1.5 Skyactiv-G engine is available in three power outputs for Mazda2, 75ps, 90ps and 115ps. Each are highly-efficient direct-injection petrol engines that achieve impressive engine efficiency thanks to the high compression combustion, resulting in excellent fuel economy and low CO₂ emissions.

In fact, Mazda2 has been awarded 3.5 stars for fuel efficiency and emissions by Green NCAP, which is an independent initiative which promotes the development of cars which are clean, energy efficient and not harmful to the environment. Mazda's Skyactiv-G 1.5 75ps version was tested and is one of only three internal combustion vehicles without a full hybrid system to be awarded 3.5 stars. Only full battery-electric (BEV) and plug-in electric (PHEV) models have achieved higher ratings.



e-SKYACTIV G WITH MAZDA M HYBRID*

When our efficient Skyactiv-G engines are paired with our Mazda M Hybrid technology, we call this e-Skyactiv G. Our innovative evolution of hybrid car technology uses four main components to capture energy that is normally wasted during braking. It stores that energy and uses it to assist the engine and power the car's electrical systems, meaning you can drive further on a tank of fuel whilst also contributing to lower CO₂ emissions and other particulates.

The result is a car that delivers outstanding performance, low running costs and strong environmental credentials.

*Available on 90ps & 115ps manual transmissions only.

SKYACTIV-VEHICLE DYNAMICS: TRANSMISSIONS, CHASSIS AND BODY

TRANSMISSIONS

SKYACTIV-MT is a light and compact manual transmission system that combines superior fuel economy with the crisp shifting feel of a sports car, ensuring perfect control.

Also available is Mazda's highly efficient, 6-speed SKYACTIV-DRIVE automatic transmission. Featuring the best attributes of CVT, Dual Clutch and conventional automatic transmissions, SKYACTIV-DRIVE provides you with a direct feel with smooth gear shifts leading to great fuel economy.*



SKYACTIV-CHASSIS

Providing a lightweight chassis that delivers driving pleasure and comfort, leading to that pure 'Jinba-ittai' oneness between car and driver. The perfectly fine tuned chassis provides our famed driving experience of agility at low and medium speeds, and stability at motorway speeds for both driving pleasure and comfort.



SKYACTIV-BODY

For a car to excel in its basic functions - accelerate, turn and stop - it must have a lean body, but also be sturdy to ensure safety. Mazda2's body has been designed around these elements leading to a light, rigid and robust body that ensures safe and joyful driving.

The Mazda2 performed impressively in all four of Euro NCAP crash test categories – Adult Occupant, Child Occupant, Vulnerable Road User (pedestrian safety) and Safety Assist.



*SKYACTIV-DRIVE Automatic Transmission is unavailable on selected grades.

ADVANCED TECHNOLOGY



COLOUR ACTIVE DRIVING DISPLAY (HEAD-UP DISPLAY)

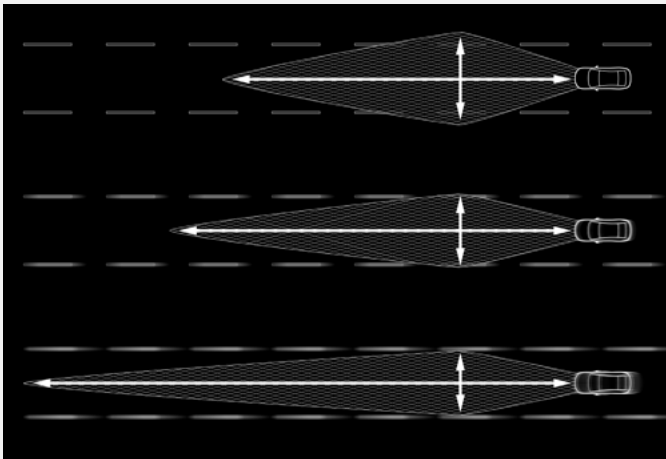
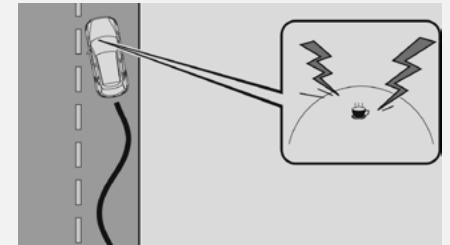
The system projects full-colour information directly onto the pop-up perspex combiner within the driver's line of sight. The displayed information is divided into upper and lower sections: driving information, including navigation, turn-by-turn direction and speed limit information displayed in the upper section, while vehicle status, including current speed and advanced safety equipment status, is displayed in the lower section.

(Standard on GT Sport and above)

DRIVER ATTENTION ALERT

Designed to reduce accidents caused by inattentiveness due to driver fatigue. The system comes into play at speeds above 40mph and begins to "learn" the driver's habits, watching inputs and the vehicle's movements in the early stages before fatigue is a factor. Later, if the system detects changes in vehicle behaviour that suggest the driver may be losing concentration, it will suggest a rest stop by sounding a chime and displaying a warning in the Multi-Information Display.

(Standard on GT Sport Tech only)



ADAPTIVE LED HEADLIGHTS

Mazda's Adaptive LED Headlights provide the ultimate in headlight technology, lighting up the road ahead as if it were daytime and allowing anybody to enjoy safe and stress-free driving at any time of day. The system increases visibility at night to help drivers stay vigilant by combining three technologies: Wide-range Low Beams which light up a wider area at low speeds, Highway mode which helps you see further when travelling at speed, and Glare-free High Beams which automatically dim part of the illuminated area to avoid dazzling other drivers.

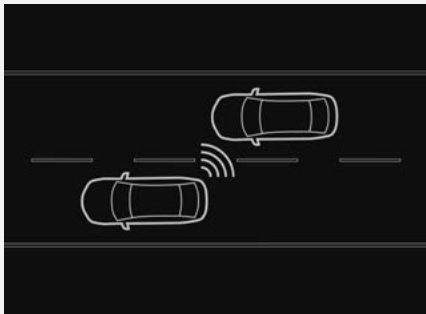
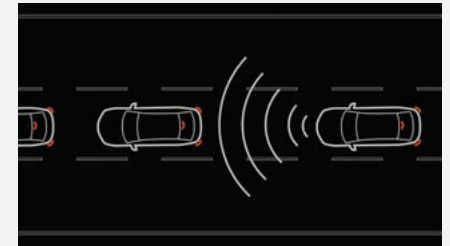
(Standard on GT Sport Tech models only)

ADVANCED TECHNOLOGY

ADVANCED SMART CITY BRAKE SUPPORT – FRONT

Alerts the driver of a possible collision using the warning indications in the display and a warning sound if the front radar sensor and Forward Sensing Camera determine that there is the possibility of a collision with a vehicle ahead, pedestrian, or a bicycle. Furthermore, if a collision is unavoidable, the automatic brake control is performed to reduce damage in the event of a collision. In addition, when the driver depresses the brake pedal, the brakes are applied firmly and quickly to assist.

(Standard on 90ps SE-L and above)



BLIND SPOT MONITORING (BSM) WITH REAR CROSS TRAFFIC ALERT (RCTA)

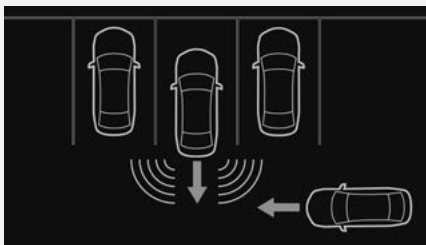
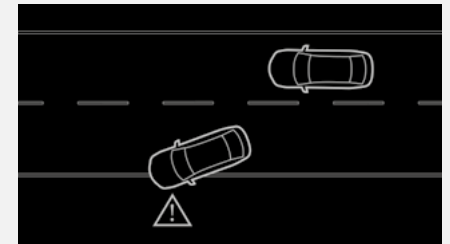
BSM uses radars mounted in the rear bumper to detect vehicles approaching from behind and in the adjacent lane. It alerts the driver to the presence of vehicles in the blind spot on either side by displaying an icon in the appropriate door mirror. If the driver indicates to change lanes with a vehicle in the blind spot, the icon flashes and a warning beep is sounded. RCTA is designed to help you make sure it's safe to start backing up. The system uses the same radars and indicators as BSM to watch for vehicles coming from both sides and alert the driver when they come near.

(Standard on GT Sport Tech only)

LANE KEEP ASSIST SYSTEM WITH LANE DEPARTURE WARNING SYSTEM

Designed to prevent your vehicle from inadvertently straying from its lane. A front view camera monitors the road ahead and calculates the car's position relative to the lane markings. If the system detects the vehicle is moving out of its lane unintentionally, the steering wheel will vibrate and an audible alert will sound. The system will also take corrective action to help you stay within the lanes through assisted steering.

(Standard on 90ps SE-L and above)



SMART CITY BRAKE SUPPORT – REAR

Reduces damage in the event of a collision by operating the brake control when the system's sensors detect an obstruction at the rear.

(Standard on GT Sport Tech models)

MAZDA SERVICES

MAZDA SERVICE PLANS

MODEL	ENGINE	PRICE
Mazda2	SKYACTIV G / e-SKYACTIV G	£599.00

Take the hassle out of servicing your car by opting for a Mazda Service Plan from your Mazda dealer. For a one off payment or manageable monthly sum, your annual Mazda servicing can be covered for up to 3 years. Contact your Mazda dealer for more information on the options available. At participating dealers only.

The maximum service interval for your Mazda is 12,500 miles or 12 months whichever occurs first, however, the servicing intervals may reduce based on the style of driving and the conditions under which your vehicle is operated.



Mazda Service Plans cover parts, labour & fluids at the prevailing VAT rate for the first three scheduled services. You have the choice of paying for your Mazda Service Plan with a one-off payment, or by monthly Direct Debit payments over the duration of the Plan. Please contact your Mazda Authorised Dealer for more information. The servicing for Mazda Service Plans can only be carried out at a Mazda Authorised Dealer. At participating Dealers only and plan must be activated prior to the vehicle's first service.

VEHICLE TAX RATES Tax year 2022-23

CO ₂ EMISSIONS FIGURE (G/KM)	PETROL & RDE2 DIESEL - FIRST YEAR RATE	ALTERNATIVE FUEL CARS - FIRST YEAR RATE	STANDARD RATE (12 months)	
			PETROL/DIESEL CARS	ALTERNATIVE FUEL CARS
0	£0	£0	£165	£155
1-50	£10	£0	£165	£155
51-75	£25	£15	£165	£155
76-90	£120	£110	£165	£155
91-100	£150	£140	£165	£155
101-110	£170	£160	£165	£155
111-130	£190	£180	£165	£155
131-150	£230	£220	£165	£155
151-170	£585	£575	£165	£155
171-190	£945	£935	£165	£155
191-225	£1,420	£1,410	£165	£155
226-255	£2,015	£2,005	£165	£155
Over 255	£2,365	£2,355	£165	£155

First-year rate is paid when first registering a vehicle and is for the first 12 months Vehicle Excise Duty. After the first 12 months, the standard rate applicable at that time is payable. Vehicles with a list price >£40k will be subject to a premium of £355 over the Standard Rate for 5 years. This does not apply to zero-emission vehicles.

MAZDA FINANCIAL SERVICES

Mazda Financial Services offers a variety of finance and insurance products to suit the needs of both private and business customers. With our wide range of plans and services, no-one is more committed to delivering complete motoring confidence and total peace of mind than Mazda and Mazda Financial Services.

MAZDA INSURANCE

When you buy your new Mazda from a Mazda franchised dealer, we'll give you free comprehensive Driveaway Insurance so you can get on the road there and then. Upgrade to our annual cover and benefit from our Mazda Accident Repair Promise all year round. In the event of an accident, unlike most other insurers, we guarantee to repair your Mazda at a Mazda Approved Bodyshop using only Mazda Genuine Parts. This helps to protect your Mazda's safety rating, resale value and manufacturer warranty. Plus, you'll also get windscreen damage cover, EU cover and a complimentary courtesy car. We'll even pay your cancellation fee if you're insured elsewhere*. Eligibility criteria, terms and conditions apply.

Ask your dealer or call Mazda Insurance on 0330 102 7995.

Get a quote online at www.mazdacarinsurance.co.uk

Mazda Insurance is arranged and administered by Verex Insurance Services Ltd which arranges policies from a panel of insurers.

*Offer not available online. Offer conditions apply.

MAZDA EXCESS RETURN VOUCHER

When you apply for Free Driveaway Insurance for your new Mazda, you'll also receive a free 1-year Excess Return voucher which pays back up to £250 of your insurance excess cost, regardless of who you're insured with, if you use our Call Mazda First service. If you have a Mazda Excess Return voucher and need to make an insurance claim, simply Call Mazda First before your insurer on 0800 015 0367.

FREE MAZDA ACCIDENT AFTERCARE

In the event of an accident, Call Mazda First 0800 015 0367 before your insurer for free 24-hour Accident AfterCare and to redeem your £250 Excess Return voucher.

Our dedicated case handlers will liaise with your insurer and arrange Mazda Genuine Parts and repairs at a Mazda Approved Bodyshop, keeping your Mazda 100% Mazda and maintaining your Mazda warranties. We'll also provide accident recovery if your Mazda isn't driveable and a free courtesy car during the repair. Terms and conditions apply.

Save 0800 015 0367 to your mobile phone.

TAX FREE – DIPLOMATIC AND MILITARY SALES

For further information contact your Mazda dealer or contact Mazda on 03457 48 48 48.

MOTABILITY

For all Motability enquiries please contact your Mazda dealer or contact Mazda on 03457 48 48 48.

This price list, dated 1 September 2022, supersedes all previous price lists. It includes changes to Vehicle Excise Duty as confirmed in the October 2018 budget affecting estimated 'On the Road' prices. Final prices shown are estimated 'On the Road' prices and are inclusive of number plates, 12 months' Vehicle Excise Duty and first registration fee. Certain models may be subject to changes in CO₂ emission levels and Vehicle Excise Duty Bands. Due to ongoing updates the specification (including fuel consumption, CO₂ emissions and equipment) of the vehicle you order and receive may be different to that detailed in this guide. Please speak to your dealer for the latest information. Images may not be to UK specification. Finance subject to status. Terms and conditions apply. Applicants must be 18 or over. Guarantee may be required. Mazda Financial Services, RH1 1SR.

DRIVE TOGETHER

Mazda Motors UK reserves the right to introduce changes in specification and equipment due to its ongoing product development. Prices are subject to change without prior notice. Colour and trim samples shown in this digital brochure may vary from the actual colours because of the variations of resolutions and colours found in various screen displays, and if printed, limitations within the printing process. Models shown may not be to UK specification. It is recommended that you consult your Mazda dealer when referring to these. Apple CarPlay®, Android Auto™ and Bose are registered trademarks in the U.S. and other countries. Used with permission. The Bluetooth® word mark and logos are owned by the Bluetooth SIG, Inc. and any use of such marks by Mazda Motor Company is under licence. Other trademarks and trade names are those of their respective owners.

www.mazda.co.uk

Mazda Helpline: 03457 48 48 48

Effective from 1 September 2022