

2022 //  
DODGE CHALLENGER



# DNA



## PERFORMANCE, POWER AND MUSCLE

Now and forever, Dodge is about performance, power and muscle. But that formula isn't simply calculated by the amount of **intense** horsepower and torque our vehicles produce. **Performance** is also measured by the way advanced safety and security features protect passengers. The onboard **technology** that helps keep occupants

connected to the people, places and entertainment that matter most is another gauge of power. **Muscle** can be tracked by the ability to tow hefty loads, seat up to seven passengers and bring **efficiencies** to engines. Every vehicle in the 2022 lineup is designed to live up to the pillars that support the **Dodge Brand**.

## BROTHERHOOD OF MUSCLE

---



.....  
**CHARGER SRT HELLCAT® REDEYE WIDEBODY  
JAILBREAK //**  
shown in Frostbite.



.....  
**DURANGO SRT® //**  
shown in Destroyer Grey with available Flame Red  
dual stripes, Black Package and Cargo Plus Group.



.....  
**CHALLENGER SUPER STOCK //**  
shown in Go Mango.



## CHOOSE YOURS

---

EVERY CHALLENGER IN THE 2022 LINEUP HARNESSSES NOSTALGIC STYLING, AMERICAN MUSCLE, MODERN TECHNOLOGY AND AN ALL-OUT ATTITUDE THAT GIVE THIS LEGEND THE CHOPS TO UPHOLD THE WEIGHT OF ITS STORIED REPUTATION. WHETHER YOU'RE LOOKING FOR THE EFFICIENT SAVVINESS OF A CHALLENGER SXT, THE DRAG RACE PROWESS OF AN SRT® SUPER STOCK OR SOMETHING IN BETWEEN, THERE'S A CHALLENGER WAITING FOR YOU.

////// Challenger R/T shown in White Knuckle with available R/T Classic bodyside stripe.

### SRT HELLCAT® // FAMILY OF LEGENDS

It's been said that there's no rest for the wicked – which is exactly why these vehicles were **born to run**.

Challenger SRT Hellcat, SRT Hellcat Redeye and SRT® Super Stock show up and show out with track-ready prowess and **jaw-dropping** quarter-mile times.

**CHALLENGER SRT HELLCAT** is powered by a **Supercharged** 6.2L HEMI® SRT V8 engine that delivers 717 horsepower and 656 lb-ft of torque. Two fully functional, air-sucking snorkels on the hood and the driver-side illuminated Air-Catcher® headlamp feed cold air to the engine to keep it **cool and efficient**. SRT Hellcat clocks the quarter-mile at 127 mph.

**CHALLENGER SRT HELLCAT REDEYE** houses a high-output version of the Supercharged 6.2L HEMI SRT V8 engine. Combined with 25 major component upgrades, the engine unleashes an unthinkable **797 horsepower and 707 lb-ft of torque**. Redeye reaches a top speed of 203 mph and runs a 10.8-second quarter-mile at 131 mph. A fully functional dual-snorkel hood provides maximum air intake to the powerplant. SRT Hellcat Redeye shows up race-ready with standard Torque Reserve, SRT Power Chiller® and After-Run Chiller, all grabbed from the SRT Demon archives. Two final drive ratios are offered: a standard 2.62:1 or available 3.09:1 for increased launch capability.

The standard SRT Performance Pages brings critical vehicle performance data to the driver's fingertips, while race options give the driver the ability to access Launch Control, Shift Light and Line Lock.

**CHALLENGER SRT SUPER STOCK** uses the same Supercharged 6.2L HEMI high-output V8 engine that powers the SRT Hellcat Redeye, but it takes its **ferocity** further with a revised powertrain and TorqueFlite® 8HP90 8-speed automatic transmission. The result is 807 horsepower (on pump gas), 3.25-second 0 – 60-mph acceleration, elapsed quarter-mile time of 10.5 seconds at 131 mph and a 168-mph top speed. Challenger SRT Super Stock is built on a standard Widebody and features a **competition suspension**, standard lightweight aluminum four-piston Brembo® brakes, and a wheel and drag radial combination designed to give customers better **grip off the line**.

**ALL SRT TRIM LEVELS** feature Drive Modes specific to the vehicle. The available SRT tuned Bilstein® Three-Mode Adaptive Damping Suspension System provides driver-selectable settings including Street (Auto) Mode = **sporty** but compliant ride; Sport Mode = **firm**, maximum handling; and Track Mode = **firm, maximum handling** plus performance shifting and a gear-holding feature to suit any driver's needs. The SRT Drive Modes, accessed via the Uconnect® touchscreen, offer selectable settings for Street (Auto), Sport and Track. A custom setting lets drivers tailor their experience by individually adjusting horsepower, transmission shift speeds, steering effort, paddle shifters, traction and suspension preferences.



**FREAK IN THE STREETS**



**LOOKS THAT THRILL //** It's the performance that curls your toes, but it's the heritage style that takes your senses to the redline. Menacing projector headlamps with quad-halo LED surrounds are a throwback to the famed '71 Challenger. The taillamps embody an old-school, seamless, split design, while the LEDs give it a contemporary twist. A standard performance hood, integrated dual bright exhaust tips and rear spoiler deliver intimidating vibes.

////// Challenger SRT Hellcat® shown in Octane Red with SRT® Black Package.

# 1320



It's named for the quarter-mile distance (1,320 feet), but if you're eying this trim level, you already knew that. While you can certainly drive this beast to work, what you're most excited to do is take it to the drag strip. Challenger R/T Scat Pack 1320 is the drag-oriented, street-legal muscle car for the grassroots drag racer. It's outfitted with everything needed to floor it on the last yellow: TransBrake, drag suspension, Adaptive Damping Suspension, 275/40R20 102Y Drag Radial tires and 20 by 9.5-inch Low-Gloss Black drag wheels with knurled

////// Challenger R/T Scat Pack shown in Pitch Black with available 1320.

bead seats. The unique fender badge lets everyone know you aren't messing around; the badge on the instrument panel reminds you that you're well-equipped for the run. Settle in, select Drag Mode to adjust the traction and stability control settings, grip the Alcantara® wrapped performance steering wheel, wait for double yellow lights, then engage the TransBrake, release when the Christmas tree goes green and move down the quarter-mile with the full force of the 6.4L HEMI® engine and its 485 horses and 475 lb-ft of torque.



**REV IT UP, LAY  
IT DOWN.**

**A BOLDER SLICE OF STYLE** // Outfit your Challenger in the new HEMI® Orange Package. Available exclusively on Challenger Scat Pack and GT trim levels, this package brings race-inspired style to your vehicle. A sporty, offset Orange and Gunmetal stripe runs tip to tail for maximum impact. Orange brake calipers are visible through the spokes of the 20 by 11-inch Carbon Black Warp-Speed aluminum wheels on Scat Pack or the 20 by 9-inch Mid-Gloss Black aluminum wheels on GT. The trim-level badging with pops of Orange does the rest of the talking.

Inside, Desert Orange accent stitching gives a custom feel to the instrument panel (IP), steering wheel, shifter boot, seats and doors. K-Black and Gloss Black accents are found on the three steering-wheel bezels, the cluster mask trim, HVAC rings and the shifter body (automatic transmission only). An Orange-accented "392" instrument panel (IP) badge also sets this package apart.





**CHALLENGER SRT HELLCAT® REDEYE //**  
shown with available real carbon fiber interior  
accents and stitched IP.



**CHALLENGER SRT HELLCAT® REDEYE //**  
shown with Caramel perforated Laguna leather trim  
interior with Redeye logo and Silver accent stitching.



**DECEIVING BY DESIGN** // Challenger SRT® Super Stock gets its name from the “Super Stock” class of vehicle in drag racing. The class is defined by vehicles purposely built to look like an ordinary passenger vehicle but are really highly modified race cars. What this powerhouse lacks in badging, it more than compensates for with the beast under the hood. The only tells are 18 by 11-inch wheels with a Low-Gloss Granite finish and Nitto® Drag Radials.



# SHAKE IT UP

////// Challenger R/T Scat Pack shown in Hellraisin with Shaker Package.





# DUST 'EM.

///// **R/T SCAT PACK** gets its muscle from the legendary 392 HEMI® V8 engine. The numbers tell the rest of the story: 485 horsepower, 475 lb-ft of torque, 0 - 60 mph in the low-4-second range and a quarter-mile in the mid-12-second range. This power is underpinned by four-piston Brembo® brakes, Three-Mode Electronic Stability Control (ESC)™\* with Full-Off Mode, high-performance suspension with Bilstein® shocks and 20 by 9-inch aluminum wheels.

///// **R/T SCAT PACK WIDEBODY** features a beefed-up stance and booming exhaust notes. The available Shaker Package supplies a bigger performance kick through a Mopar® Cold-Air Intake and full-floating, open-element Shaker hood scoop.

///// **ALL R/T SCAT PACK MODELS** include Dodge SRT® Performance Pages, a 7-inch reconfigurable digital display, and race-inspired seats featuring a Scat Pack Bee logo embroidered on either a standard high-performance premium cloth or available Nappa leather trim with Alcantara® suede inserts.



**BORN TO BOLT** // Challenger Widebody configurations bring a different dynamic of performance, boldness and power through a more aggressive stance. Available on R/T Scat Pack, SRT Hellcat® and SRT Hellcat Redeye and standard on SRT® Super Stock, fender flares are wider and add 3.5 inches to overall vehicle width.

The extra room makes way for track-ready 20 by 11-inch forged aluminum wheels riding on sticky 305/35ZR20 Pirelli® P ZERO™ tires on SRT Hellcat and Scat Pack models. SRT Super Stock receives 18 by 11-inch Low-Gloss Granite aluminum drag wheels and P315/40R20 102W Nitto® Street-Legal Drag Radials.

In addition to extra rubber on the road, R/T Scat Pack Widebody includes six-piston Brembo® front brakes and an Adaptive Damping Suspension. All other Widebody models employ a standard Widebody competition suspension.

////// Challenger SRT Scat Pack Widebody shown in Pitch Black.

# ENGINE// TRANSMISSION

3.6L PENTASTAR® VARIABLE VALVE TIMING (VVT) V6 WITH TORQUEFLITE® 8-SPEED AUTOMATIC	303 HORSEPOWER (HP)/268 LB-FT TORQUE
5.7L HEMI® VVT V8 WITH TREMEC® 6-SPEED MANUAL	375 HP/410 LB-FT TORQUE
5.7L HEMI V8 WITH TORQUEFLITE 8-SPEED AUTOMATIC	372 HP/400 LB-FT TORQUE
392 HEMI® V8 WITH TREMEC 6-SPEED MANUAL	485 HP/475 LB-FT TORQUE
392 HEMI V8 WITH TORQUEFLITE 8-SPEED AUTOMATIC	485 HP/475 LB-FT TORQUE
SUPERCHARGED 6.2L SRT HELLCAT® HEMI V8 WITH TREMEC HIGH-PERFORMANCE 6-SPEED MANUAL	717 HP/656 LB-FT TORQUE
SUPERCHARGED 6.2L SRT HELLCAT HEMI V8 WITH TORQUEFLITE HIGH-PERFORMANCE 8-SPEED AUTOMATIC	717 HP/656 LB-FT TORQUE
SUPERCHARGED 6.2L SRT HELLCAT HEMI HIGH-OUTPUT V8 WITH TORQUEFLITE HIGH-PERFORMANCE 8-SPEED AUTOMATIC	797 HP/707 LB-FT TORQUE 807 HP/707* LB-FT TORQUE

\*SRT® Super Stock and the SRT Hellcat Redeye Widebody Jailbreak.



**BE THE ONE  
THAT GOT AWAY**

# 00:20:22

---

**TRACK PROVEN TUNED CHASSIS** // Intense track conditions require tightly engineered hardware. Challenger showcases a high-performance tuned chassis that's ready to go.

**SHOCK ABSORBERS** // Available Bilstein® high-performance shock absorbers are precision-damped to help provide a confident, smooth ride for the typical commute while still being capable for weekend track duty.

**SUSPENSION** // Every Challenger in the lineup is underpinned by a proven suspension. Depending on trim level, options range from sport-tuned to competition to drag-race-specific suspension.

////// Challenger R/T shown in White Knuckle.

## GEOMETRY MAJOR ---

Movement and staying power come from a sophisticated suspension geometry and rear-wheel drive (RWD). The independent five-link rear suspension is finely tuned to help provide remarkable handling and ride comfort. A lower unsprung mass helps maintain optimum tire contact with the ground and minimize road noise.

Models equipped with a 392 HEMI® V8 engine feature unique suspension geometry that helps improve balance, cornering ability and steering responsiveness. Bilstein® shocks and a lowered suspension allow these performers to achieve 0.93 g on the skid pad.

A Bilstein Three-Mode Adaptive Damping Suspension System is available on R/T Scat Pack and standard on all SRT Hellcat® models. It offers different suspension firmness settings: Street Mode (sporty), Sport Mode (firm) and Track Mode (firmest max handling). The standard R/T Scat Pack suspension delivers performance handling through an aggressive front- and rear-camber geometry. Set at -1.2 degrees in the front and -0.75 degrees in the rear, Challenger is set up for high-speed cornering, with its tires leaning inboard at the top relative to the body.





**WEATHER OR *NOT*,  
HERE WE COME**



////// Challenger GT AWD shown in Pitch Black with Blacktop Package.

## ALL-WHEEL DRIVE

---

**FOUR-SEASON ACTION** // When Mother Nature gets sloppy, there's no need to park your ride. Challenger all-wheel drive (AWD) delivers reassuring control exactly when you need it. The advanced automatic front-axle disconnect technologically, intuitively and seamlessly transitions between rear-wheel drive (RWD) and AWD without driver intervention. Under normal driving conditions, the front axle is disengaged and 100 percent of the engine's torque is directed to the rear wheel. When sensors indicate more traction is needed, the system automatically engages the front axle and instantly transitions to AWD Mode. These systems work with the vehicle's Electronic Stability Control (ESC)<sup>1</sup> System to deliver precise front-to-rear torque control while preserving unrelenting drive.



**CHALLENGER GT AWD** //  
shown in White Knuckle with available  
Blacktop Package.



## SAFETY & SECURITY FEATURES

**PARKVIEW® REAR BACK-UP CAMERA<sup>2</sup>** // This system displays the area directly behind your vehicle when the vehicle is in Reverse. Dynamic grid lines adjust with steering input to assist in parking. Standard.

**PARKSENSE® REAR PARK ASSIST SYSTEM<sup>2</sup>** // When your vehicle is in Reverse and moving at a low speed, the system can detect objects in your vehicle's path. When sensors detect objects in the back-up pathway, the system provides an audible and visual warning. Available.

**BLIND SPOT MONITORING (BSM)<sup>3</sup> AND REAR CROSS-PATH DETECTION<sup>2</sup> SYSTEM** // Dual radar sensors constantly monitor driver blind spots, providing notification of an encroaching vehicle via illuminated icons in the sideview mirrors and by an audible chime. The system includes Rear Cross-Path Detection<sup>2</sup> which monitors for vehicles and objects in perpendicular relationships to the vehicle while backing out of, for example, parking spots or driveways. Available.

**ADAPTIVE CRUISE CONTROL (ACC)<sup>4</sup>** // Automatically adjusts vehicle speed to maintain desired distance from the vehicle ahead. Available.

**FULL-SPEED FORWARD COLLISION WARNING (FCW)<sup>5</sup>** // Radar and camera technology combine to alert you when the system senses a potential frontal impact. If you're not able to respond quickly enough, the system will transmit audible and visual warnings. Warning sensitivity can be adjusted to driver preference. Available.

**ELECTRONIC STABILITY CONTROL (ESC)<sup>1</sup>** // This system is designed to assist the driver in maintaining control of the vehicle when a loss of traction is detected. ESC<sup>1</sup> senses when a vehicle loses steering control and attempts to correct the vehicle's course by automatically applying the brakes at individual wheels. Standard.

**RAIN-SENSING WINDSHIELD WIPERS** // System sensors automatically detect moisture on the windshield and activate the wipers. Available.

**READY ALERT BRAKING** // The system anticipates situations when you might initiate an emergency brake stop and uses the ESC<sup>1</sup> pump to pre-charge the brake system in order to decrease the time required for full brake application. Standard.

**RAIN BRAKE SUPPORT** // When your car's windshield wipers have been activated, the system pulses the brake pads closer to the spinning rotors, helping to keep the rotors and pads dry for greater control and operator security. Standard.

**DODGE AIR FILTRATION SYSTEM** // We have enhanced the air filtration system in the Dodge Challenger to provide filtered air for you and your family. The new Dodge Air Filtration System filters 95 percent of air particulates while separating out pollen, allergens and bacteria, making it the cleanest cabin air ever in a Challenger. Standard.

# Uconnect®

## IN TOUCH WHEREVER YOU GO

Uconnect® brings a wide range of interactive features to your vehicle and beyond through a highly intuitive communication experience. Trips are enhanced with informative and entertaining apps. Access them on your Uconnect touchscreen as well as your smartphone.

Listen to your favorite playlist from your connected device, then flip to SiriusXM® Radio<sup>6</sup> and enjoy the best commercial-free music, plus every major sport and the biggest names in entertainment, news and comedy. You'll get over 150 channels, all at the press of a button. With the SiriusXM Platinum Plan<sup>6</sup>, you get every channel available on your satellite radio, and you can also listen wherever you go on your portable devices with the SiriusXM App<sup>6</sup>, which is included with your trial. Available.

Drive worry-free with SiriusXM Guardian™<sup>7</sup> – a premium suite of safety and convenience services that can be accessed in-vehicle or through the Dodge App<sup>8</sup>. Includes a twelve-month trial. Available.

**LEARN MORE ABOUT UCONNECT  
AND RELATED SERVICES AT  
DRIVEUCONNECT.COM OR THE DODGE APP.<sup>8</sup>**



# PICK IT. MAKE IT. JAILBREAK.

**BREAK FREE FROM CONVENTION // Exclusive to the SRT Hellcat® Redeye Widebody, the available Jailbreak Package unlocks 10 additional horsepower and creates a Challenger that's uniquely yours. Jailbreak unleashes more color availability, previously restricted color combinations and, for the first time, a choice of badge colors. Buyers can also choose their wheels, stripes, interior seating and exterior color preferences.**

**GO TO [WWW.DODGE.COM](http://WWW.DODGE.COM) TO CUSTOMIZE YOUR CHALLENGER**

**5 EXTERIOR BADGE COLORS:** BLACK CHROME, RED, BRASS MONKEY, SATIN CHROME, MIDNIGHT METALLIC.



**7 WHEEL CHOICES:** 20 BY 11-INCH CARBON BLACK LIGHTWEIGHT WHEELS, 20 BY 11-INCH BRASS MONKEY WIDEBODY WHEELS, 20 BY 11-INCH CARBON BLACK WHEELS, 20 BY 11-INCH DEVIL'S RIM WHEELS, 20 BY 11-INCH LIGHTWEIGHT GRANITE WHEELS, 20 BY 11-INCH SATIN CARBON WARP-SPEED WHEELS, 20 BY 11-INCH WARP-SPEED GRANITE WHEELS.



**CHALLENGER SEAT MATERIALS AND COLORS:** BLACK HOUNDSTOOTH, BLACK NAPPA/ALCANTARA®, SEPIA LAGUNA, DEMONIC RED LAGUNA, HAMMERHEAD GREY LAGUNA, BLACK LAGUNA/ALCANTARA, BLACK LAGUNA.



**CHALLENGER EXTERIOR GRAPHIC OPTIONS:** BLUE DUAL STRIPE, CARBON DUAL STRIPE, GUNMETAL DUAL STRIPE, RED DUAL STRIPE, SILVER DUAL STRIPE. SHOWN ON PAGE 28: SATIN BLACK-PAINTED HOOD, SATIN BLACK-PAINTED ROOF, SATIN BLACK-PAINTED HOOD/ROOF/DECKLID, SCAT PACK STRIPE, SRT® WIDEBODY STRIPE.



**ADDITIONAL INTERIOR OPTIONS:**

- 2 DRIVER AIR BAG BADGES: RED/LIT, WHITE/LIT
- 5 APPLIQUÉ FINISHES: DUB PLATE, HECTIC MESH, DARK ENGINE TURN, CARBON FIBER, COPPER WEAVE
- 2 IP BADGES: JAILBREAK IP BADGE, BASE REDEYE IP BADGE
- 2 STEERING WHEEL WRAP OPTIONS: LEATHER, ALCANTARA
- 2 HEADLINER/A-PILLAR OPTIONS: TWILL, ALCANTARA
- 4 FLOOR BINDING COLORS: BLACK, SEPIA, DEMONIC RED, HAMMERHEAD GREY
- 4 SEAT BELT COLORS: BLACK, SEPIA, DEMONIC RED, HAMMERHEAD GREY (SHOWN ON PAGE 33)

**ADDITIONAL EXTERIOR OPTIONS:**

- 6 BRAKE CALIPER COLOR OPTIONS: RED, ORANGE, BLACK, GUNMETAL, YELLOW, BLUE (SHOWN ON PAGE 32)
- 2 EXHAUST TIP OPTIONS: CHROME, BLACK
- 2 FUEL DOOR OPTIONS: CHROME, BLACK
- 2 SPOILER OPTIONS: STANDARD, PERFORMANCE

# INTERIOR: SEAT FABRIC CHOICES

## SPORT SEATS



SEDOSO/HOUNDSTOOTH PREMIUM CLOTH – BLACK. STANDARD ON SXT RWD AND SXT AWD



NAPPA LEATHER TRIM WITH NAPPA LEATHER PERFORATED INSERTS AND TUNGSTEN ACCENT STITCHING – BLACK. INCLUDED WITH PLUS PACKAGE ON SXT RWD AND SXT AWD

## PERFORMANCE SEATS



SEDOSO/HOUNDSTOOTH PREMIUM CLOTH – BLACK. STANDARD ON GT RWD, GT AWD, R/T, R/T SCAT PACK WITH BEE LOGO, AND SRT HELLCAT® AND SUPER STOCK WITH HELLCAT LOGO AND SILVER ACCENT STITCHING; PACKAGED WITH T/A ON R/T AND R/T SCAT PACK, AND 1320 ON R/T SCAT PACK

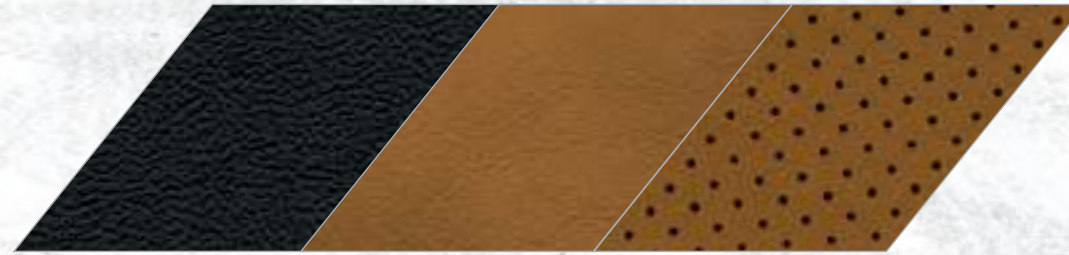


NAPPA LEATHER TRIM WITH ALCANTARA® BOLSTERS, PERFORATED INSERTS AND TUNGSTEN OR SILVER ACCENT STITCHING – BLACK. OPTIONAL ON SRT HELLCAT REDEYE JAILBREAK; INCLUDED WITH PLUS GROUP ON GT RWD, GT AWD, R/T, R/T SCAT PACK WITH BEE LOGO, SRT HELLCAT WITH HELLCAT LOGO AND SILVER ACCENT STITCHING, PLUS GROUP ON T/A AND T/A 392 WITH T/A LOGO, AND 1320 PLUS GROUP ON R/T SCAT PACK; INCLUDED WITH HEMI® ORANGE PACKAGE ON GT AND R/T SCAT PACK WITH ORANGE ACCENT STITCHING AND DODGE RHOMBUS LOGO

# INTERIOR: SEAT FABRIC CHOICES (CONTINUED)



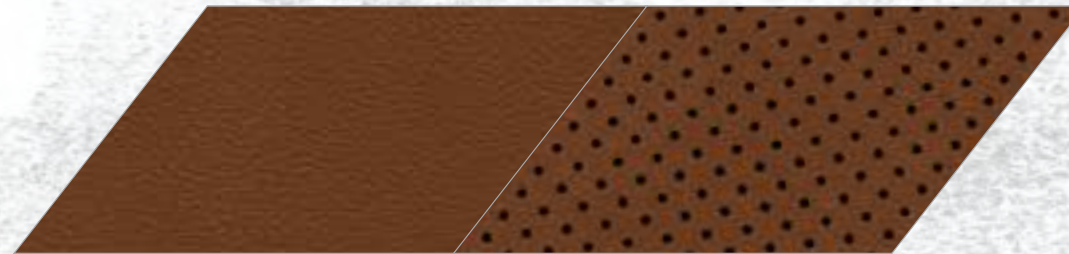
NAPPA LEATHER TRIM WITH ALCANTARA® BOLSTERS, PERFORATED INSERTS AND RUBY RED ACCENT STITCHING – BLACK AND RUBY RED. OPTIONAL WITH PLUS GROUP ON GT RWD, GT AWD, R/T AND R/T SCAT PACK WITH BEE LOGO



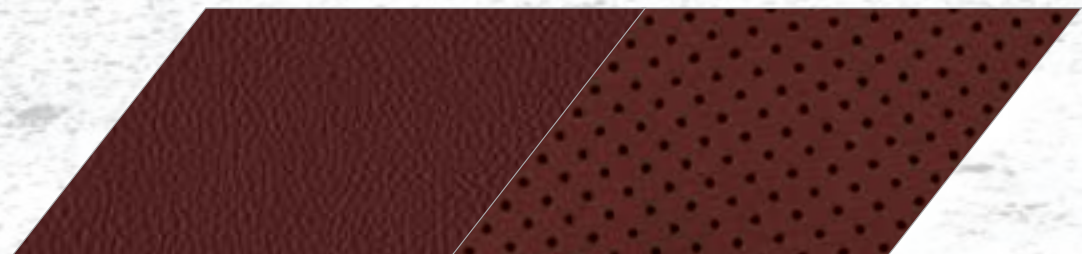
NAPPA LEATHER TRIM WITH ALCANTARA BOLSTERS, PERFORATED INSERTS AND TUNGSTEN ACCENT STITCHING – BLACK AND CARAMEL. OPTIONAL WITH PLUS GROUP ON GT RWD, GT AWD, R/T AND R/T SCAT PACK WITH BEE LOGO



LAGUNA LEATHER TRIM WITH ALCANTARA PERFORATED INSERTS AND SILVER ACCENT STITCHING – BLACK. OPTIONAL ON SRT HELLCAT® REDEYE JAILBREAK; INCLUDED WITH ALCANTARA INTERIOR PACKAGE ON SRT HELLCAT WITH HELLCAT LOGO



LAGUNA LEATHER TRIM WITH LAGUNA LEATHER PERFORATED INSERTS AND SILVER ACCENT STITCHING – SEPIA. OPTIONAL ON SRT HELLCAT REDEYE JAILBREAK; INCLUDED WITH LAGUNA LEATHER PACKAGE ON SRT HELLCAT WITH HELLCAT LOGO



LAGUNA LEATHER TRIM WITH LAGUNA LEATHER PERFORATED INSERTS AND SILVER ACCENT STITCHING – DEMONIC RED. OPTIONAL ON SRT HELLCAT REDEYE JAILBREAK; INCLUDED WITH LAGUNA LEATHER PACKAGE ON SRT HELLCAT WITH HELLCAT LOGO



LAGUNA LEATHER TRIM WITH LAGUNA LEATHER PERFORATED INSERTS AND SILVER ACCENT STITCHING – BLACK. OPTIONAL ON SRT HELLCAT REDEYE JAILBREAK; INCLUDED WITH LAGUNA LEATHER PACKAGE ON SRT HELLCAT WITH HELLCAT LOGO



LAGUNA LEATHER TRIM WITH LAGUNA LEATHER PERFORATED INSERTS AND SILVER ACCENT STITCHING – HAMMERHEAD GREY. OPTIONAL ON SRT HELLCAT REDEYE JAILBREAK WITH HELLCAT LOGO



# //////////////////// STRIPE:CHOICES

1 // SCAT PACK STRIPE

2 // R/T CLASSIC BODYSIDE STRIPE

3 // SRT HELLCAT® DUAL HOOD STRIPES

4 // SRT HELLCAT SATIN BLACK-PAINTED HOOD

5 // SHAKEDOWN GRAPHICS

6 // SHAKER GRAPHICS

7 // BLACKTOP STRIPE

8 // V6 BODYSIDE STRIPE

9 // T/A BODYSIDE STRIPE

10 // PAINTED BLACK SATIN GRAPHICS PACKAGE

11 // SATIN BLACK-PAINTED ROOF

12 // HEMI® ORANGE PACKAGE STRIPE

13 // JAILBREAK WIDEBODY STRIPE

**CHALLENGER WHEELS //**  
Challenger SRT® Super Stock shown in Go Mango.



## ALUMINUM

# WHEEL:CHOICES

**1. 18 BY 7.5-INCH SATIN CARBON** // STANDARD ON SXT (WK1) **2. 18 BY 11-INCH LOW-GLOSS GRANITE** // STANDARD ON SRT® SUPER STOCK (WBB) **3. 19 BY 7.5-INCH SATIN CARBON** // STANDARD ON SXT AWD (WRQ)  
**4. 19 BY 7.5-INCH BLACK NOISE** // INCLUDED WITH BLACKTOP PACKAGE ON SXT AWD (WP4) **5. 20 BY 8-INCH SATIN CARBON** // STANDARD ON GT AWD; INCLUDED WITH PLUS GROUP ON SXT AWD (WHC) **6. 20 BY 8-INCH BLACK NOISE** // INCLUDED WITH BLACKTOP PACKAGE ON SXT AWD AND GT AWD (WH4) **7. 20 BY 8-INCH SATIN CARBON** // STANDARD ON GT; INCLUDED WITH PLUS GROUP ON SXT (WPZ) **8. 20 BY 8-INCH SATIN CARBON** // STANDARD ON R/T; INCLUDED WITH PLUS GROUP ON GT (WHK) **9. 20 BY 8-INCH TINTED POLISH WITH GRANITE POCKETS** // INCLUDED WITH PLUS GROUP ON R/T (WHH) **10. 20 BY 8-INCH BLACK NOISE** // INCLUDED WITH BLACKTOP PACKAGE ON SXT, GT AND R/T (WRE) **11. 20 BY 9-INCH LIGHTS OUT** // INCLUDED WITH PERFORMANCE HANDLING GROUP ON GT AND R/T (WHF) **12. 20 BY 9-INCH LOW-GLOSS GRANITE CRYSTAL** // STANDARD ON R/T SCAT PACK; INCLUDED WITH T/A PACKAGE ON R/T (WRP) **13. 20 BY 9.5-INCH LOW-GLOSS BLACK** // STANDARD ON T/A 392; INCLUDED WITH DYNAMICS PACKAGE ON R/T SCAT PACK; INCLUDED WITH PERFORMANCE PLUS GROUP ON R/T (WRV)



[ 1 ]



[ 2 ]



[ 3 ]



[ 4 ]



[ 5 ]



[ 6 ]



[ 7 ]



[ 8 ]



[ 9 ]



[ 10 ]



[ 11 ]



[ 12 ]



[ 13 ]

## ALUMINUM

# WHEEL:CHOICES (CONTINUED)

1. 20 BY 9.5-INCH LOW-GLOSS BLACK WITH KNURLED BEAD // INCLUDED WITH 1320 ON R/T SCAT PACK (WPJ) 2. 20 BY 9.5-INCH LOW-GLOSS BLACK 5-DEEP LIGHTWEIGHT // STANDARD ON SRT HELLCAT® (WEB) 3. 20 BY 9.5-INCH MATTE VAPOR 5-DEEP LIGHTWEIGHT // OPTIONAL ON SRT HELLCAT AND SRT HELLCAT REDEYE (WSE) 4. 20 BY 9.5-INCH MACHINED-FACE WITH GRANITE POCKETS // OPTIONAL ON SRT HELLCAT AND SRT HELLCAT REDEYE (WFC) 5. 20 BY 9.5-INCH BRASS MONKEY LIGHTWEIGHT // OPTIONAL ON R/T SCAT PACK, SRT HELLCAT AND SRT HELLCAT REDEYE (WRJ) 6. 20 BY 11-INCH DEVIL'S RIM // STANDARD ON R/T SCAT PACK WIDEBODY (WSC) 7. 20 BY 11-INCH CARBON BLACK // STANDARD ON SRT HELLCAT WIDEBODY (WSG) 8. 20 BY 11-INCH WARP-SPEED GRANITE // OPTIONAL ON SRT HELLCAT WIDEBODY (WS5) 9. 20 BY 11-INCH BRASS MONKEY WIDEBODY // OPTIONAL ON SRT HELLCAT WIDEBODY (WDF) 10. 20 BY 11-INCH CARBON BLACK LIGHTWEIGHT // STANDARD ON SRT HELLCAT REDEYE WIDEBODY (WHP) 11. 20 BY 11-INCH CARBON BLACK WARP-SPEED // INCLUDED WITH HEMI® ORANGE PACKAGE ON SCAT PACK (WHW) 12. 20 BY 9-INCH MID-GLOSS BLACK // INCLUDED WITH HEMI ORANGE PACKAGE ON GT (WHT) 13. 20 BY 11-INCH SATIN CARBON WARP-SPEED // AVAILABLE ON SRT HELLCAT REDEYE (WF9) 14. 20 BY 11-INCH LIGHTWEIGHT GRANITE // AVAILABLE ON SRT HELLCAT REDEYE (WHE)



[ 1 ]



[ 2 ]



[ 3 ]



[ 4 ]



[ 5 ]



[ 6 ]



[ 7 ]



[ 8 ]



[ 9 ]



[ 10 ]



[ 11 ]



[ 12 ]



[ 13 ]



[ 14 ]

# SRT<sup>®</sup> BRANDED BREMBO<sup>®</sup> 6-PISTON LIGHTWEIGHT CALIPERS //

**HOLD YOUR HORSES //** Solid stopping power comes from standard 4-wheel antilock disc brakes. Additional stopping power comes from the available Brembo Performance Brake System, featuring vented two-piece front rotors and four-piston front calipers for outstanding heat management and that provide superior braking performance. For superb stopping capabilities, the SRT engineered Brembo Performance Brake System, with six-piston front and four-piston rear calipers, results in improved performance braking when paired with wind-tunnel-designed brake ducts.



.....  
**SHOWN IN RED //**



.....  
**SHOWN IN BLACK //**



.....  
**SHOWN IN GUNMETAL //**



.....  
**SHOWN IN ORANGE //**



.....  
**SHOWN IN BLUE //**



.....  
**SHOWN IN YELLOW //**

# BUCKLE UP, BUTTERCUP



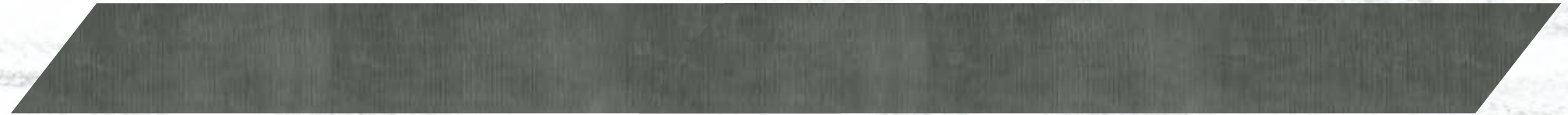
.....  
**SRT® SEAT BELT OPTIONS //**  
available in Red, Sepia\* and Hammerhead Grey\*; standard  
in Black (inset).

\*Jailbreak Package only.

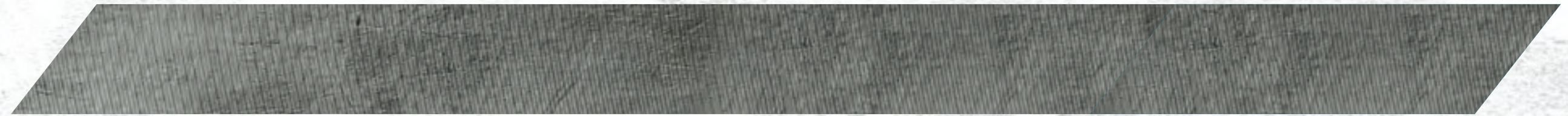


AIRBAG

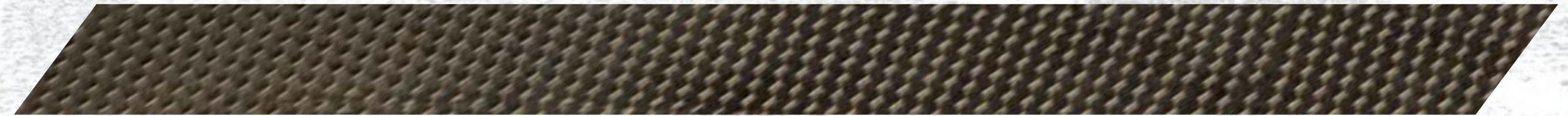
# INTERIOR TRIM ACCENTS



DUB PLATE INTERIOR ACCENTS; STANDARD ON ALL MODELS AND AVAILABLE WITH JAILBREAK PACKAGE



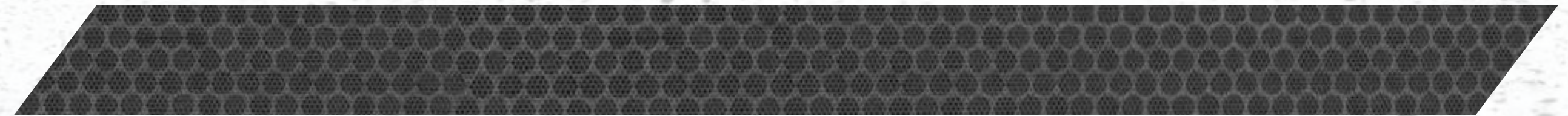
DARK ENGINE TURN INTERIOR ACCENTS; INCLUDED IN PLUS PACKAGE ON SRT HELLCAT®, SRT HELLCAT WIDEBODY, SRT HELLCAT REDEYE, SRT HELLCAT REDEYE WIDEBODY AND SRT® SUPER STOCK; AVAILABLE WITH JAILBREAK PACKAGE



COPPER WEAVE CARBON FIBER INTERIOR ACCENTS; AVAILABLE ON SRT HELLCAT REDEYE JAILBREAK



REAL CARBON FIBER INTERIOR ACCENTS; INCLUDED IN CARBON/SUEDE INTERIOR PACKAGE ON R/T SCAT PACK, R/T SCAT PACK WIDEBODY, SRT HELLCAT, SRT HELLCAT WIDEBODY, SRT REDEYE, SRT REDEYE WIDEBODY AND SRT SUPER STOCK



HECTIC MESH INTERIOR ACCENTS; AVAILABLE ON SRT HELLCAT REDEYE WIDEBODY JAILBREAK

# COLOR:CHOICES

STINGER YELLOW (PYV)  
Late availability.

PITCH BLACK (PX8)

HELLRAISIN (PCD)

GRANITE (PAU)

INDIGO BLUE (PBM)

SINAMON STICK (PEC)

TORRED (PR3)

GO MANGO (PVP)

WHITE KNUCKLE (PW7)

OCTANE RED (PRV)

TRIPLE NICKEL (PSE)

FROSTBITE (PCA)

SMOKE SHOW (PAE)

F8 GREEN (PFQ)

## COLOR CRAZY —

YOU DON'T BUILD FAMILY SEDANS THAT PACK 797 HORSEPOWER, COUPES THAT DOUBLE AS WEEKEND RACERS AND SUVs THAT IMPRESS THE NHRA MORE THAN THE PTA JUST TO GIVE THEM COLOR NAMES LIKE WHITE, BLUE, RED AND GREY. FOR DECADES, DODGE VEHICLES HAVE BEEN COATED IN COLORS WITH NAMES AS FLASHY AS THE VEHICLES THEMSELVES. THE ROSTER HAS INCLUDED PANTHER PINK, HEMI® ORANGE, TOP BANANA, SASSY GRASS, GO MANGO AND PLUM CRAZY. THE REASON FOR THE BRASH NAMES IS SIMPLE – IT'S ABOUT ADDING ATTITUDE AND EDGE TO EVERYTHING WE DO.

# SXT

## STANDARD

- 3.6L Pentastar® V6 engine – 303 hp and 268 lb-ft of torque
- TorqueFlite® 8-speed automatic transmission
- Performance suspension
- Sport Mode
- 4-wheel Antilock Brake System (ABS)
- Electronic Stability Control (ESC)<sup>1</sup>
- 18 by 7.5-inch Satin Carbon aluminum wheels
- Bright fuel-filler door
- Integrated dual bright exhaust tips
- Split LED taillamps
- Body-color rear spoiler with camera<sup>2</sup>
- Automatic headlamps
- Daytime running lamps (DRLs)
- Sedoso/Houndstooth cloth Sport seats
- 10-way power driver's seat, includes 4-way power lumbar adjust
- Dub plate instrument-panel/console bezel finish
- 7-inch Thin Film Transistor (TFT) configurable cluster display
- Uconnect® 4 with 7-inch touchscreen display
- Apple CarPlay®<sup>9</sup>/Android Auto™<sup>10</sup>
- Uconnect Integrated Voice Command with Bluetooth®
- 6-speaker audio
- 6 air bags<sup>11</sup>
- Keyless Enter 'n Go™ with push-button start
- Security alarm<sup>12</sup>

## OPTIONS/PACKAGES

- Uconnect 4C Navigation with 8.4-inch touchscreen display
- SiriusXM® Radio<sup>6</sup> (6-month trial subscription)
- Sunroof
- Nappa leather-trimmed Sport seats
- Compact spare tire
- Alpine® Audio Group
- Blacktop Package
- Blacktop stripe
- Cold Weather Group
- Driver Convenience Group
- Technology Group
- Plus Package
- Mopar® Interior Appearance Group

## SXT ALL-WHEEL DRIVE (AWD)

Adds to SXT

- AWD System with live-axle disconnect
- AWD suspension
- 19 by 7.5-inch Satin Carbon aluminum wheels
- 235 All-Season Performance tires

## OPTIONS/PACKAGES

- Uconnect 4C Navigation with 8.4-inch touchscreen display
- Sunroof
- Alpine Audio Group
- Blacktop Package
- Blacktop stripe
- Cold Weather Group
- Driver Convenience Group
- Technology Group
- Plus Package



GT

#### ADDS TO SXT

- Sport suspension
- Performance brakes
- Performance steering
- 20 by 8-inch Satin Carbon aluminum wheels
- GT bright grille badge
- Performance hood and splitter
- Projector fog lamps
- ParkSense® Rear Park Assist System<sup>2</sup>
- Performance “4-bump” steering wheel
- Paddle shifters
- Sedoso/Houndstooth cloth Performance seats
- Universal garage door opener
- Remote Start System<sup>13</sup>
- Super Track Pack

#### OPTIONS/PACKAGES

- Uconnect® 4C Navigation with 8.4-inch touchscreen display
- SiriusXM® Radio<sup>6</sup> (6-month trial subscription)
- Sunroof
- 3-Season tires
- Compact spare tire
- Alpine® Audio Group
- Blacktop Package
- Cold Weather Group
- Driver Convenience Group
- Harman Kardon® Audio Group
- Mopar® Interior Appearance Group
- Performance Handling Group
- Plus Package
- Technology Group
- Brake calipers – Red
- Blacktop stripe
- HEMI® Orange Package
- Nappa/Alcantara® leather trim Performance seats
- Bodyside stripes

#### GT ALL-WHEEL DRIVE (AWD)

Adds to GT

- AWD System with live-axle disconnect
- AWD suspension
- 20 by 8-inch Satin Carbon aluminum wheels
- 245 All-Season Performance tires

#### OPTIONS/PACKAGES

- Uconnect 4C Navigation with 8.4-inch touchscreen display
- Sunroof
- Alpine Audio Group
- Blacktop Package
- Cold Weather Group
- Driver Convenience Group
- Harman Kardon Audio Group
- Plus Package
- Technology Group
- Compact spare tire
- Nappa/Alcantara leather trim Performance seats
- Bodyside stripes



R/T

#### STANDARD

- 5.7L HEMI® V8 engine – 375 hp and 410 lb-ft of torque (with manual transmission)
- 372 hp and 400 lb-ft of torque (with automatic transmission)
- 6-speed manual transmission
- Antispin differential
- Super Track Pack
- Electronic Stability Control (ESC)<sup>1</sup>
- Sport suspension
- Performance brakes
- Performance steering
- 20 by 8-inch Satin Carbon aluminum wheels
- HEMI fender badges
- R/T badge
- ParkSense® Rear Park Assist System<sup>2</sup>
- Active Exhaust System with bright tips
- Body-color rear spoiler with camera<sup>2</sup>
- Performance hood and front splitter
- Automatic headlamps
- Daytime running lamps (DRLs)
- Projector fog lamps
- Sedoso/Houndstooth cloth Performance seats
- 10-way power driver's seat, includes 4-way power lumbar adjust
- Bright pedals
- Dub plate instrument-panel/console bezel finish
- Performance "4-bump" steering wheel
- 7-inch Thin Film Transistor (TFT) configurable cluster display
- Uconnect® 4 with 7-inch touchscreen display
- Apple CarPlay®<sup>9</sup>/Android Auto™<sup>10</sup>
- 6-speaker audio
- Universal garage door opener
- Keyless Enter 'n Go™ with push-button start
- Security alarm<sup>12</sup>

#### OPTIONS/PACKAGES

- TorqueFlite® 8-speed automatic transmission
- Sunroof
- Dual R/T side stripes
- Mopar® Black Hood Pin Kit
- Brake calipers – Red
- 3-Season tires
- Compact spare tire
- Uconnect 4C Navigation with 8.4-inch touchscreen display
- SiriusXM® Radio<sup>6</sup> (6-month trial subscription)
- Alpine® Audio Group
- Blacktop Package
- Cold Weather Group
- Driver Convenience Group
- Harman Kardon® Audio Group
- Mopar Interior Appearance Group
- Performance Handling Group
- Performance Plus Group
- Plus Package
- Shaker Package
- T/A Package
- Technology Group
- Blacktop stripe
- Mopar Front Strut Tower Brace



# R/T SCAT PACK

## ADDS TO R/T

- 392 HEMI® V8 engine – 485 hp and 475 lb-ft of torque
- 4-piston Brembo® brakes – All corners
- High-performance suspension
- Launch Assist
- Line Lock
- 220-amp alternator
- 20 by 9-inch Low-Gloss Granite Crystal aluminum wheels
- Forward-facing “392 Bee” fender badges
- Satin Black fuel-filler door
- Satin Black rear spoiler with camera<sup>2</sup>
- Aluminum Performance hood with center air inlet and dual heat extractors
- Split Gloss Black grille surround
- “//” illuminated Air-Catcher® headlamps
- Sedoso/Houndstooth cloth Performance seats with Bee logo on seatback
- Uconnect® 4C with 8.4-inch touchscreen display
- SiriusXM® Radio<sup>6</sup> (6-month trial subscription)
- SRT® Performance Pages
- SRT configurable drive modes
- 6 premium Alpine® speakers
- 276-watt amplifier
- Deluxe Security System<sup>12</sup>

## OPTIONS/PACKAGES

- TorqueFlite® 8-speed automatic transmission
- 275 Pirelli® 3-Season tires
- Brake calipers – Red
- 20 by 9.5-inch Brass Monkey lightweight aluminum wheels
- Sunroof
- Mopar® Black Hood Pin Kit
- SRT Performance spoiler
- Dual R/T side stripes
- Scat Pack stripe
- Uconnect 4C Navigation with 8.4-inch touchscreen display
- Alpine Audio Group
- Carbon/Suede Interior Package
- Driver Convenience Group
- Dynamics Package
- Harman Kardon® Audio Group
- Mopar Interior Appearance Group
- Plus Package
- Shaker Package
- Shaker Graphics
- Shakedown Graphics
- T/A Package
- Technology Group
- 1320
- 1320 Plus Package
- HEMI Orange Package
- Mopar Front Strut Tower Brace



# SCAT PACK WIDEBODY

## **ADDS TO R/T SCAT PACK**

- Brembo® 6-piston front brake calipers
- Adaptive Damping Suspension
- 20 by 11-inch Devil's Rim aluminum wheels
- 305 Pirelli® All-Season tires
- 3.09 rear axle ratio
- Widebody fender flares
- Leather flat-bottom steering wheel
- Performance shift indicator

## **OPTIONS/PACKAGES**

- 20 by 11-inch Carbon Black aluminum wheels
- 305/35ZR20 Pirelli P ZERO™ Summer tires
- Brake calipers – Red
- Sunroof
- SRT® Performance spoiler
- Scat Pack stripe
- Uconnect® 4C Navigation with 8.4-inch touchscreen display
- Rear Seat Delete Group
- Alpine® Audio Group
- HEMI® Orange Package
- Carbon/Suede Interior Package
- Driver Convenience Group
- Harman Kardon® Audio Group
- Mopar® Interior Appearance Group
- Plus Package
- Technology Group
- Shaker Package
- Shaker Graphics
- Shakedown Graphics
- T/A Package
- T/A side stripe
- Mopar Black Hood Pin Kit
- Mopar Front Strut Tower Brace



# SRT HELLCAT®

## **ADDS TO R/T SCAT PACK**

- Supercharged 6.2L HEMI® V8 engine – 717 hp and 656 lb-ft of torque
- 6-piston Brembo® front brakes
- Competition Adaptive Damping Suspension
- After-run cooling system
- Brake calipers – Red
- 20 by 9.5-inch Low-Gloss Black 5-Deep lightweight aluminum wheels
- 275 All-Season Performance tires
- SRT Hellcat interior/exterior badges
- Conical cold-air intake
- Aluminum dual-scoop hood
- “Hellcat” illuminated Air-Catcher® headlamp
- SRT Hellcat front fascia
- Sedoso/Houndstooth cloth Performance seats with Hellcat logo
- SRT® Performance leather steering wheel
- Performance shift indicator
- SRT Track Experience

## **OPTIONS/PACKAGES**

- TorqueFlite® 8-speed automatic transmission
- 20 by 9.5-inch machined-face aluminum wheels with Granite pockets
- 20 by 9.5-inch Matte Vapor 5-Deep lightweight aluminum wheels
- 275 Pirelli® Summer tires
- Brake calipers – Black, Gunmetal and Orange
- Sunroof
- 20 by 9.5-inch Brass Monkey lightweight aluminum wheels

- Painted Black Satin Graphics Package
- Satin Black-painted roof
- Satin Black-painted hood
- SRT Performance spoiler
- Uconnect® 4C Navigation with 8.4-inch touchscreen display
- Demonic Red Performance seats
- Red seat belts
- Alcantara® Appearance Package
- Carbon/Suede Interior Package
- Driver Convenience Group
- Harman Kardon® Audio Group
- Laguna Leather Package
- Plus Package
- Technology Group
- Rear Seat Delete Group
- Dual stripe – Carbon
- SRT Black Package



# SRT HELLCAT® WIDEBODY

## **ADDS TO SRT HELLCAT**

- Widebody competition suspension
- 20 by 11-inch Carbon Black aluminum wheels
- 305 Pirelli® All-Season Performance tires
- Widebody fender flares

## **OPTIONS/PACKAGES**

- 20 by 11-inch Brass Monkey Widebody aluminum wheels
- 20 by 11-inch Warp-Speed Granite aluminum wheels
- 305 Pirelli Summer High-Performance tires
- Brake calipers – Black, Gunmetal and Orange
- Sunroof
- Painted Black Satin Graphics Package
- Satin Black-painted hood
- Satin Black-painted roof
- SRT® Performance spoiler
- Demonic Red Performance seats
- Red seat belts
- Rear Seat Delete Group
- Uconnect® 4C Navigation with 8.4-inch touchscreen display
- Alcantara® Appearance Package
- Carbon/Suede Interior Package
- Driver Convenience Group
- Harman Kardon® Audio Group
- Laguna Leather Package
- Plus Package
- Technology Group
- Dual stripe – Carbon
- SRT Black Package
- Mopar® Black Hood Pin Kit



# SRT HELLCAT® REDEYE

## **ADDS TO SRT HELLCAT**

- Supercharged 6.2L high-output engine – 797 hp and 707 lb-ft of torque
- TorqueFlite® 8-speed automatic transmission
- 2.62 axle ratio
- SRT Power Chiller®
- Unique Redeye badging

## **OPTIONS/PACKAGES**

- 20 by 9.5-inch Brass Monkey lightweight aluminum wheels
- 20 by 9.5-inch machined-face aluminum wheels with Granite pockets
- 20 by 9.5-inch Matte Vapor 5-Deep lightweight aluminum wheels
- 275 Pirelli® Summer tires
- 3.09 rear axle ratio
- Brake calipers – Black, Gunmetal and Orange
- Sunroof
- Painted Black Satin Graphics Package
- Satin Black-painted hood
- Satin Black-painted roof
- SRT® Performance spoiler
- Uconnect® 4C Navigation with 8.4-inch touchscreen display
- Demonic Red Performance seats
- Red seat belts
- Rear Seat Delete Group
- Alcantara® Appearance Package
- Carbon/Suede Interior Package
- Driver Convenience Group
- Laguna Leather Package
- Harman Kardon® Audio Group
- Plus Package
- Technology Group
- Dual stripe – Carbon
- SRT Black Package



# SRT HELLCAT® REDEYE WIDEBODY

## **ADDS TO SRT HELLCAT WIDEBODY**

- Supercharged 6.2L high-output engine
- TorqueFlite® 8-speed automatic transmission
- 2.62 axle ratio
- SRT Power Chiller®
- Unique Redeye badging
- 20 by 11-inch Carbon Black lightweight wheels

## **OPTIONS/PACKAGES**

- Sunroof
- Uconnect® 4C Navigation with 8.4-inch touchscreen display
- Driver Convenience Group
- Harman Kardon® Audio Group
- Plus Package
- Technology Group
- SRT® Black Package



# SRT® SUPER STOCK

## **ADDS TO OR DELETES FROM SRT HELLCAT® WIDEBODY**

- Supercharged 6.2L high-output engine – 808 hp and 707 lb-ft of torque
- TorqueFlite® 8-speed automatic transmission
- Performance-tuned asymmetrical limited-slip differential with a 3.09 final drive ratio
- SRT Power Chiller®
- Unique Redeye badging
- 18 by 11-inch Low-Gloss Granite wheels
- 315/40R18 Nitto® NT05R Drag Radials
- Lightweight all-aluminum Brembo® 4-piston brake calipers
- 14.2-inch vented rotors
- Launch Assist
- Launch Control
- Line Lock
- Torque Reserve
- Race Cooldown

## **OPTIONS/PACKAGES**

- Brake calipers – Black
- Sunroof
- Painted Black Satin Graphics Package
- Satin Black-painted roof
- Satin Black-painted hood
- SRT Performance spoiler
- Uconnect® 4C Navigation with 8.4-inch touchscreen display
- Demonic Red Performance seats
- Red seat belts
- Rear Seat Delete Group
- Alcantara® Appearance Package
- Carbon/Suede Interior Package
- Driver Convenience Group
- Laguna Leather Package
- Harman Kardon® Audio Group
- Plus Package
- Technology Group
- Dual stripe – Carbon
- Mopar® Black Hood Pin Kit
- SRT Black Package



# SRT HELLCAT® REDEYE WIDEBODY JAILBREAK

## STANDARD

- 807 hp and 707 lb-ft of torque
- SRT Power Chiller®
- 2.62 rear axle ratio (8-speed)
- 305/35ZR20 All-Season tires
- Widebody competition suspension
- Widebody fender flares
- Redeye decklid badge
- Redeye fender badge
- Redeye grille badge
- Satin Black Challenger decklid badge
- Satin Black Dodge taillamp badge
- 20 by 11-inch Carbon Black lightweight wheels
- 220-mph speedometer
- Black door trim panels
- Black-edged premium floor mats
- High-performance engine controller
- Jailbreak IP badge
- Black seat belts

## OPTIONS/PACKAGES

- 20 by 11-inch Brass Monkey Widebody wheels
- 20 by 11-inch Carbon Black aluminum wheels
- 20 by 11-inch Devil's Rim aluminum wheels
- 20 by 11-inch lightweight Granite wheels
- 20 by 11-inch Satin Carbon Warp-Speed wheels
- 20 by 11-inch Warp-Speed Granite wheels
- 305/35ZR20 Pirelli® P ZERO™ Summer tires
- 3.09 rear axle ratio (8-speed)
- Alcantara® steering wheel with Red lit LED SRT® logo
- Alcantara steering wheel with White lit LED SRT logo
- Wildwood Alcantara steering wheel
- Demonic Red seats
- Brake calipers – Black, Blue, Gunmetal, Orange and Yellow
- Exterior badging – Black, Brass Monkey, Red and Satin Chrome
- Bright fuel-filler door
- Cargo net

- Dual stripes – Blue, Carbon, Gunmetal, Red and Silver
- Scat Pack stripe
- Interior accents – Dub Plate, Hectic Mesh, Dark Engine Turn, real Carbon Fiber and Copper Weave Carbon Fiber
- Floor mat binding – Grey, Red and Sepia
- Gloss Black-painted roof
- Satin Black-painted hood/roof/trunk/spoiler
- Satin Black-painted hood
- Driver Convenience Group
- Harman Kardon® Audio Group
- Navigation & Travel Group
- Technology Group
- Painted hood
- Power sunroof
- SRT Performance spoiler
- Sedoso/Houndstooth cloth seats with Hellcat logo
- Laguna leather trim Performance seats with Hellcat logo
- Alcantara/Laguna leather trim Performance seats with Hellcat logo
- Seat Belts – Demonic Red, Sepia and Hammerhead Grey
- Suede headliner
- Uconnect® 4C Navigation with 8.4-inch touchscreen display





/ A /

## CHALLENGER MOPAR® // // //

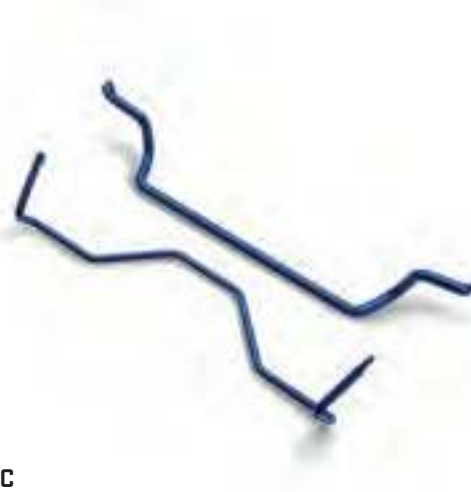
When it comes to Challenger, not all parts and accessories are created equal. As the official service, parts and customer care provider for the Dodge Brand, only Mopar Parts and Accessories can ensure the proper fit, finish and functionality. That's because they're original equipment, engineered by the same people who designed your vehicle, which means you can personalize your ride with complete confidence. Learn more at [mopar.com](http://mopar.com)

### MOPAR ACCESSORIES // // //

A) SRT Hellcat® Graphic; B) Stage 1 Performance Springs<sup>14</sup>; C) Antisway Bar Kit<sup>14</sup>



B



C

AVAILABLE AT  
**DODGE LIFE**

[dodge.com/life](http://dodge.com/life)



**DODGE GOODS** Our brand is fueled by the loyal enthusiasts, the ones who view their vehicles as an extension of themselves. Check out an extensive line of gifts and accessories for the Dodge enthusiast. From authentic apparel to die-cast replica cars for the collector, as well as electronics and office supplies, all lifestyle items are as bold as your Dodge vehicle.

available at  
**amazon**

[amazon.com/dodgestore](http://amazon.com/dodgestore)



## THE DODGE GARAGE // // //

Pull into the Dodge Garage and fill up on the latest muscle car and racing news gathered from hundreds of Web sites and forums. Use the quick links to access the latest from the Dodge Brand's digital and social channels, including YouTube, Facebook, Twitter and Instagram. Shop for must-have Dodge wearables and merchandise and download free iconic-image wallpaper for your devices. Floor it over to [dodgegarage.com](http://dodgegarage.com) and be part of the brotherhood of muscle.



<sup>1 3 5 R</sup>  
**HH** DODGE GARAGE  
<sub>2 4 6</sub>



## RADFORD RACING SCHOOL

Take ownership of a new Dodge//SRT® vehicle and we'll help you learn how to properly handle its power and capabilities with confidence in a safe environment. Included in your purchase is a one-day SRT Experience Class at Radford Racing School. Submit your qualifying VIN within the first 12 months of taking delivery to begin the registration process. See your dealer for more information.



DODGE CHALLENGER // 800-4ADODGE

Dodge is a registered trademark of FCA US LLC. // 74-383-2234 (12/21)

[1] Always drive carefully, consistent with conditions. Always wear your seat belt and obey traffic laws. [2] Always check entire surroundings visually before proceeding. [3] Always check visually for vehicles prior to changing lanes. [4] This system is a driver convenience system, not a substitute for active driver involvement. The driver must remain aware of traffic conditions and be prepared to use the brakes to avoid collisions. [5] This system is solely an alert system for the front of the vehicle that does not take any actions to change vehicle dynamics to avoid a collision, not a substitute for active driver involvement. The driver must remain aware of traffic conditions and be prepared to use the brakes to avoid collisions. [6] Your service will automatically stop at the end of your trial subscription unless you decide to continue service. If you do not wish to enjoy your trial subscription, you can cancel it by calling the number below. **If you decide to continue service after your trial subscription, the subscription plan you choose will automatically renew thereafter and you will be charged according to your chosen payment method at then-current rates.** Fees and taxes apply. Please see our Customer Agreement at [www.siriusxm.com](http://www.siriusxm.com) for complete terms and how to cancel, which includes calling us at 1-866-635-2349. All fees, content and features are subject to change. [7] All SiriusXM Guardian equipped vehicles come with a 6-month complimentary trial effective on the date of purchase or lease of a new vehicle. Enrollment in the trial is required to receive service. Upon expiration of the trial period, purchase of a subscription is required to continue SiriusXM Guardian. SiriusXM Guardian is available only on equipped vehicles purchased within the United States and Puerto Rico. Services can only be used where cellular coverage is available. See Uconnect and SiriusXM Guardian Terms of Service for complete service limitations. [8] You are responsible for using remote features in accordance with any laws, rules or ordinances in effect in your vehicle's location. You must have an active subscription to SiriusXM Guardian in order to use remote services. See Terms of Service for service limitations. [9] Requires compatible iPhone. See dealer for phone compatibility. Data plan rates apply. Vehicle user interface is a product of Apple. Apple CarPlay is a trademark of Apple Inc. iPhone is a trademark of Apple Inc., registered in the US and other countries. Apple terms of use and privacy statements apply. [10] To use Android Auto on your car display, you'll need an Android phone running Android 6 or higher, an active data plan and the Android Auto App. Google, Android, Android Auto, YouTube Music and other related marks are trademarks of Google LLC. [11] Always sit properly in designated seating positions with seat belts securely fastened at all times. [12] Vehicle must be locked and system activated for alarm to sound. [13] Check state and local laws regarding the use of remote start systems. [14] Mopar Performance Parts are sold "as is" unless otherwise noted. [15] Visit [Mopar.com](http://Mopar.com) for complete details and a copy of the Powertrain Limited Warranty.

©2021 FCA US LLC. All Rights Reserved. Dodge, Mopar, SRT, Air-Catcher, Blacktop, Challenger, Charger, the crosshair grille, Durango, HEMI, 392 HEMI, ParkSense, ParkView, Pentastar, R/T, Scat Pack and Scat Pack logo, SRT Hellcat, Hellcat logo, SRT Power Chiller, SXT, TorqueFlite and Uconnect are registered trademarks and Keyless Enter 'n Go is a trademark of FCA US LLC.

Alpine is a registered trademark of Alpine Electronics, Inc. Alcantara is a registered trademark of Alcantara S.p.A. Amazon and all related logos and marks are trademarks of Amazon.com, Inc., or its affiliates. Bilstein is a registered trademark of August-Bilstein GmbH & Co. Bluetooth is a registered trademark of Bluetooth SIG, Inc. Brembo is a registered trademark of Freni Brembo SpA. Harman Kardon is a registered trademark and GreenEdge is a trademark of Harman International Industries, Inc. Pirelli is a registered trademark and P ZERO is a trademark of Pirelli Tyre S.p.A. TREMEC is a registered trademark of Transmisiones Y Equipos Mecánicos, S.A. de C.V. Apple CarPlay is a registered trademark of Apple Inc. Instagram and logo are registered trademarks of Instagram, Inc. SiriusXM Connected Vehicles Services Inc., Sirius XM, SiriusXM, SiriusXM Guardian, and all related marks and logos are registered trademarks of SiriusXM Radio Inc. Facebook and logo are registered trademarks of Facebook, Inc. The Twitter logo is a service mark of Twitter, Inc. YouTube is a registered trademark and Google, Android, Android Auto and other marks are trademarks of Google LLC. Nitto is a registered trademark of Nitto Tire Corporation Inc.

This brochure is a publication of FCA US LLC. All product illustrations and specifications are based upon current information at the time of publication approval. FCA US LLC reserves the right to make changes from time to time, without notice or obligation, in prices, specifications, colors and materials, and to change or discontinue models which are considered necessary to the purpose of product improvement or for reasons of design and/or marketing.

5 YEAR / 60,000 MILE<sup>™</sup>  
POWERTRAIN LIMITED WARRANTY



DODGE.COM