

1996 Dodge Stratus

CAB-FORWARD DESIGN
MODIFIED DOUBLE-
WISHBONE SUSPENSION
CHOICE OF THREE
MULTIVALVE ENGINES
FOUR-SPEED AUTOMATIC TRANSAXLE
RIGID BODY • ABS
DUAL AIR BAGS*
INTEGRATED CHILD SAFETY SEAT
CHILD-PROTECTION
REAR DOOR LOCKS
SIDE-IMPACT PROTECTION
REMOTE KEYLESS ENTRY
FRONT-WHEEL DRIVE
FOLDING REAR SEATBACK
LARGE TRUNK
AIR CONDITIONING



The New Dodge





▲ **Cab-forward design** pushes the wheels out and toward the corners for greater hp and shoulder room and more stable handling. A lengthened wheelbase increases front and rear leg room.



▲ **A choice of three engines.** A 2.0-liter, 16-valve four-cylinder engine is standard on Stratus and Stratus ES. A 2.4-liter, 16-valve four-cylinder engine is optional on Stratus and Stratus ES. A 2.5-liter, 24-valve V6 engine is optional on Stratus ES.

Attitude with a capital "A."

Attitude. It's the mark of a maverick. The sign of an independent thinker who has enough confidence to walk the edge without ever looking down.

Attitude is also a mark of courage and imagination. Courage to change the rules when the old rules no longer make sense. Imagination to think ahead. To develop new rules that make so much sense they quickly become the standard.

This kind of attitude and the innovation it inspires are an integral part of every car and truck Dodge puts on the road.

Take the Dodge Stratus. A hot-handling sport sedan that feeds your desire to push it to the limit without overlooking your need for safety, comfort and reliability.

And the versatile Stratus doesn't overlook your attitude. Its nonthreatening sticker price is designed to provide all the "adjustment" you need.

"Thanks in part to a long, 108.0-inch wheelbase and a nicely tuned, all-independent suspension, the Stratus handles well."

—AUTOMOBILE MAGAZINE

Firm, responsive handling that remains stable through corners and curves is the mark of a well-engineered sport coupe. Or a Dodge Stratus sport sedan.

Stratus hugs corners to deliver stable road response through the tightest of turns. And its fully independent, modified double-wishbone suspension allows ride and handling to be tuned separately, so neither is sacrificed for the other.

Ride is comfortable, yet never too soft. Road response

is solid and smooth, with a well-centered Euro feel.

Stratus' wide stance, dictated by its advanced cab-forward architecture, also contributes to the outstanding stability of this sporty sedan. An extremely rigid, straight-rail underbody design reduces body flex and roll.



■ **Right on track.** As an official partner of the Skip Barber Organization, Dodge is the exclusive supplier of vehicles to the Skip Barber Driving School. This nationally recognized driving school uses Dodge Stratus, Stealth, Neon, Viper and Dakota vehicles to teach defensive driving as well as performance driving techniques. The school is the only one of its kind to offer instruction in front-wheel-drive, rear-wheel-drive and all-wheel-drive applications. To enroll in a memorable one- or two-day Skip Barber Driving School course, call 1-203-435-1300.



About this catalog: Since the time of printing, some of the information you'll find in this catalog may have been updated. Ask your dealer for the latest details.

Some of the equipment shown or described throughout this catalog is available at extra cost.

Stratus ES shown in Light Silver Fern.

“The cab-forward design gives the Stratus a huge interior, which feels like a first-class cabin compared to the competition’s coach class.”

—AUTOWEEK

When it comes to interiors, Stratus has a lot of room to talk. This spacious sport sedan features an interior passenger volume of 95.9 cubic feet.

Stratus’ engineers filled this room with comfort, convenience and visual attractions. Air conditioning is standard, as are rear seat outlets designed to deliver cool air or heat to

passengers in back.

Since even a short trip can seem endless if personal space is compromised, Stratus never loses sight of the fact that those three people in the rear need room to accommodate heads, shoulders, hips, arms and legs. Extra inches translate into extra comfort for all.

“... the controls and switchgear are positioned within the driver’s easy reach.”

—AUTOWEEK

With so many comfort and convenience features, an ergonomic, “easy-going” interior was mandated for Stratus from design day one.

Temperature and sound system controls are in the center of the dash, equally accessible to the driver and front passenger. Operational controls such as headlights, turn signals, panel lights and optional

fog lights are located in a stalk at the left. Large, easily read gauges, amber colored at night, are clearly visible through the steering wheel opening.



▲ A standard center console includes storage, two cup holders and a power outlet. An available Smoker’s Package replaces the left cup holder with an ash receiver and adds a lighter to the power outlet.



▲ Stratus’ large trunk (15.7 cubic feet) features a low liftover for easy loading and unloading. Spring-operated hinges help by positioning the trunk lid up and out of the way.



▲ Optional sunroof. From the closed or vent position, simply touch Stratus’ available power sunroof control once to move it to its full open position. (Sunroof late availability.)



▲ Stratus’ rear seatback folds down, providing increased cargo area.



▲ The Stratus ES driver’s seat (optional on Stratus) can be adjusted up or down for maximum comfort. Manually adjustable lumbar support individualizes the seat even more.



▲ Leather-trimmed seats and an eight-way power driver’s seat are available as a package option on Stratus ES.



▲ An optional AM/FM stereo CD player features 100 watts of power plus eight premium speakers in six locations.



▲ An optional 100-watt AM/FM stereo cassette player offers eight premium speakers and is equipped with controls on the faceplate that operate the optional in-dash mounted CD changer.



Stratus ES cloth interior shown in Silver Fern.



▲ An optional **Integrated Child Safety Seat**,¹ designed for toddlers 20 to 66 pounds and at least one-year old, folds down from the center of the rear seatback. This position provides the greatest protection in the event of a side impact.

¹Not available with leather-trimmed seating or folding rear seatback.

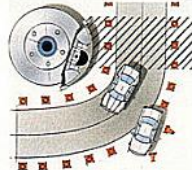


▲ **Side-impact protection.**

Stratus already meets 1997 federal side-impact requirements. Both front and rear doors feature ultra-high-strength steel side-guard door beams that help absorb energy during a side-impact collision.



▲ **Standard child-protection rear door locks** will not allow rear doors to be opened from the inside when the selector lever is engaged.



▲ A standard **antilock brake system** on Stratus ES (optional on Stratus) prevents wheel lockup during emergency stops. Electronic sensors automatically "pump" the brakes, allowing the driver to bring the vehicle to a safe stop and maintain steering control.

"... this new Dodge appears ready, willing and quite able to hold its own against the current benchmark cars in this segment."

— MOTOR TREND

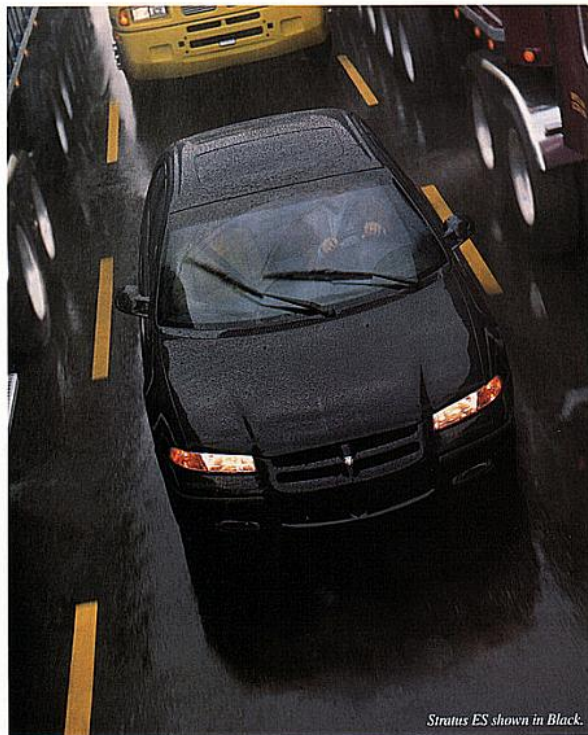
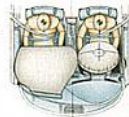
Out of the assurance that a car is safe to drive comes the confidence necessary to enjoy the ride. Stratus' extensive list of advanced safety features provides a feeling of security for both the driver and passengers.

It begins with the assurance that driver and front passenger air bags* are standard equipment on every Dodge Stratus. Also standard are driver and front passenger shoulder

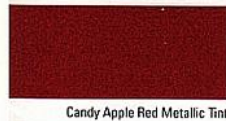
belts that are height-adjustable to five different positions for maximum comfort.

Should a collision prove unavoidable, Stratus' front and rear crush zones are designed to crumple on impact, absorbing energy that otherwise might cause injury.

*Always wear your seat belts.



Stratus ES shown in Black.



Candy Apple Red Metallic Tint



Light Silver Fern Pearl Coat



Light Gold Pearl Coat



Forest Green Pearl Coat



Dark Rosewood Pearl Coat



Black



Light Iris Pearl Coat



Orchid Pearl Coat



Stone White



Medium Fern Pearl Coat

Power Trains				
Engine	Code	Transaxle	Stratus	Stratus ES
2.0-Liter SOHC 16-Valve SMPI 4-Cylinder Horsepower—132 hp @ 6,000 rpm Torque—129 lb-ft @ 5,000 rpm	21	5-Speed Manual with Overdrive	S	S
2.4-Liter DOHC 16-Valve SMPI 4-Cylinder Horsepower—150 hp @ 5,200 rpm Torque—167 lb-ft @ 4,000 rpm	24	4-Speed Electronically Controlled Automatic with Overdrive	O	O
2.5-Liter SOHC 24-Valve SMPI V6 ¹ Horsepower—168 hp @ 5,600 rpm Torque—170 lb-ft @ 4,350 rpm	26	4-Speed Electronically Controlled Automatic with Overdrive	NA	O

S = Standard. O = Optional. NA = Not available.
¹Built by Mitsubishi Motors Corporation.

Color & Trim			
Exterior Colors (Clear Coat)	Interior Colors		
	Mist Gray ¹	Silver Fern	Camel
Candy Apple Red Metallic Tint	*		
Light Silver Fern Pearl Coat		*	
Light Gold Pearl Coat			*
Forest Green Pearl Coat			*
Dark Rosewood Pearl Coat	*		*
Black	*	*	*
Light Iris Pearl Coat	*		
Orchid Pearl Coat	*		
Stone White	*	*	*
Medium Fern Pearl Coat		*	

¹Leather trim only available in Mist Gray.

Exterior Dimensions ¹⁾ Stratus/Stratus ES		Interior Dimensions ¹⁾ Stratus/Stratus ES	
Wheelbase	108.0	Front — Head Room	38.1
Overall Length	186.0	— Shoulder Room	55.2
Overall Width	71.0	— Hip Room	52.8
Overall Height	54.1	— Leg Room	42.3
Track, Front	60.2	Rear — Head Room	36.8
Track, Rear	60.2	— Shoulder Room	54.7
		— Hip Room	52.7
		— Leg Room	38.1

¹Inches unless otherwise specified.

¹Inches unless otherwise specified.

Specifications		Stratus/Stratus ES
Seating Capacity		5
Trunk Volume (cu ft)		15.7
Total Volume Index (cu ft) ¹⁾		111.6
Curb Weight (lb) ²⁾		2,911/2,968
Fuel Tank Capacity (gall)		16.0

¹According to EPA Interior Volume Index.

²Weight with standard engines.



Stratus



Leather trim (ES model only), shown in Mist Gray



Pulsar cloth fabric (ES model only), shown in Mist Gray



Pulsar cloth fabric (ES model only), shown in Silver Fern



Pulsar cloth fabric (ES model only), shown in Camel



Joliett cloth fabric (Stratus model only), shown in Mist Gray



Joliett cloth fabric (Stratus model only), shown in Silver Fern



Joliett cloth fabric (Stratus model only), shown in Camel

We're thinking ahead.

Futuristic design. Innovative engineering. Quality production. All are embodied in the 1996 Dodge Stratus. And in the Dodge vehicles of tomorrow currently under development at our research facilities and on our test tracks.

But to you, the vast resources of the Dodge Division are centered in just one place: the dealership. Here, too, our goal is to ensure continuous improvement.

CustomerOne In our ongoing commitment to customer satisfaction, we've instituted Customer One, a comprehensive process designed to improve the way we do business. As a result, we hope to exceed your expectations — whether you're "just looking," ready to buy, or in for service.

That's the new Dodge culture: new ways to research, design, test and produce world-class cars and trucks — and continuous improvement in the ways we treat the people who buy them.

For more information, call 1-800-4-A-DODGE.

SERVICE/OWNERSHIP EXPERIENCE

3/36 Customer One Care

Dodge Stratus is covered by the Customer One Care Plan,* which includes:

CustomerOne + Care A 3-year or 36,000-mile (whichever comes first) **Bumper-To-Bumper Limited Warranty** which covers the complete vehicle against defects in factory-supplied materials and workmanship. (This 3/36 warranty excludes tires, wiper blades, clutch and brake linings and normal maintenance items.)

CustomerOne + Care **Roadside Assistance for 3 years or 36,000 miles** which provides 24-hour, 7-day-a-week Emergency Road Service, contacted by a 24-hour nationwide toll-free phone number. Roadside Assistance covers many items not included in the 3/36 warranty, such as lockout, jump start, out of gas, flat tire repair and towing.¹

A 7-year or 100,000-mile Outer-Panel Rust-Through Limited Warranty which covers the cost of all parts and labor needed to repair exterior sheet-metal panels perforated by corrosion.

The 3/36 Customer One Care Plan stays with the vehicle and transfers automatically to any subsequent owners at no charge during the warranty period.

* See your dealer for additional details and a copy of the limited warranty.

¹ Tires and optional cellular phones are covered by their respective manufacturers' warranties.

² Roadside Assistance services provided by Cross Country Motor Club, Inc. (In California, Cross Country Motor Club of California, Inc.)

Chrysler Service Contracts

Service Contract Additional peace-of-mind protection for Stratus owners is available through optional Chrysler Service Contracts. These services are available in a variety of time and mileage combinations to meet your particular driving needs.

MOPAR CUSTOMER CARE

There's only one sure way to keep your Dodge Stratus performing at its optimum mile after mile. Just make sure it's serviced regularly at your nearby Dodge dealer. That's where you'll find first-rate mechanics specially trained in the maintenance and repair of your new Dodge Stratus. They've been provided with all the sophisticated equipment today's cars demand. And they have immediate access to a complete stock of authentic Mopar replacement parts that can make the difference between trouble-free driving and the unacceptable alternative.

Purchase Alternatives And Assistance

Many of today's new car prospects are considering leasing as an alternative to buying. Leasing a new Dodge Stratus usually involves a small security deposit and the first month's lease payment. Monthly payments are usually less than financing a new car purchase. Ask your dealer for details.

Chrysler Credit Financing

Chrysler Credit offers a broad range of automotive financing which provides flexible terms for qualified buyers. Many of these plans can be customized to fit your particular budget and lifestyle. Our College Graduate Program is especially attractive if you're just beginning your career. Gold Key Lease is designed to lower your monthly payments while Gold Key Lease One allows you to prepay all monthly payments so you have all the advantages of leasing without the hassle of monthly payments. Gold Key Plus is ideal for short-term financing. Ask your salesperson for details.

Automobility Program (formerly P-CAP)

Cash reimbursement is available for qualified adaptive driving devices on the 1996 Dodge Stratus. Ask your dealer to provide you with more information or call the Automobility Headquarters at 1-800-255-9877.

Chrysler Cellular Systems

For 1996, Chrysler Corporation will be offering a selection of dealer-installed/supplied cellular phones in several models to enhance the available optional equipment list. Ask your dealer for details. Each manufacturer warrants and services these products. Restrictions apply. Ask your dealer for a copy of these limited warranties.

Chrysler Corporation Environmental Programs

Chrysler Corporation is committed to the research and development of technologies for reducing emissions that deteriorate air quality. These include vehicle emissions control devices, and alternative fuels and engines. Chrysler's flexible fuel methanol cars, natural gas vans and electric minivans clearly demonstrate our dedication to the advancement of these technologies in our products. Your Dodge Stratus and all other Chrysler Corporation vehicles are built in manufacturing facilities that use state-of-the-art environmental and assembly controls to conserve resources, prevent pollution and recycle materials.

Always wear your seat belts.

Certain models, packages and options are subject to specific restrictions, requirements or late availability. See your dealer for the latest ordering information.

All product illustrations are based on current information at the time of publication approval. Although descriptions are believed correct, accuracy cannot be guaranteed. Chrysler Corporation reserves the right to make changes from time to time without notice or obligation in prices, specifications, colors and materials, and to change or discontinue models. See your dealer for latest information.



Viper



Stealth



Neon Coupe



Neon Sedan



Avenger



Stratus



Intrepid



Caravan



Grand Caravan



Dakota



Ram Pickup



Ram Van



The New Dodge