

Neon



Loaded
with a t

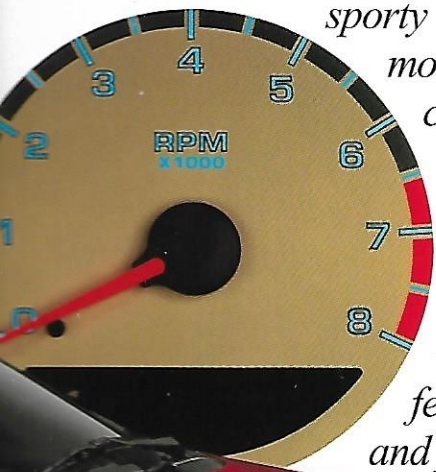


When we redesigned Dodge Neon, we gave it a 132-horsepower 16-valve overhead cam engine and available 15-inch wheels and tires to heavy up your performance. We gave it a longer wheel-base and increased suspension travel to smooth out your road. We gave it available four-wheel antilock disc brakes, Low-Speed Traction Control, and Electronic Variable Brake Proportioning to help keep you firmly in control. We redesigned Neon's interior with increased overall space, more hip room front and rear, generous rear-seat and head room, and a larger trunk. We put in extra-comfortable seats. And we added tons of creature comforts.

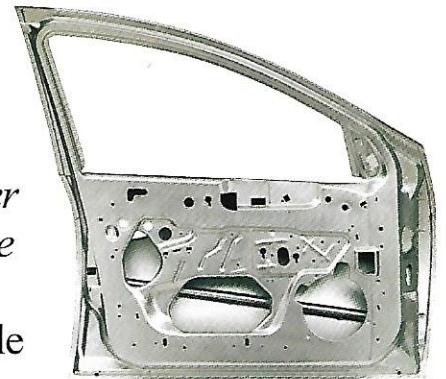


on of fun.

Check out the theater-style lighting and fingertip lighting for available power door locks and exterior rearview mirror-adjusting buttons. Then check out the sporty off-white faces for the instrument panel gauges available on some models. You also have extra places for just about anything. The center console has integrated tissue, CD, and cassette spaces, and four cup holders (one for rear-seat service). We even quieted the cabin by triple-sealing and full-framing the doors, and designing special body welds and engine mounts. All to help you appreciate the superb six-speaker stereo — or your own undisturbed thoughts. Then we loaded it with safety and security features like Next Generation driver and front-passenger air bags,* and height-adjustable front shoulder belts.



Plus an available Sentry Key™ Engine Immobilizer that makes sure no one operates your Neon but you. Automobile Magazine has said,



“...Neon is a real, substantial car, and one of the better deals on the market.” We loaded Dodge Neon with a ton of fun. You can throw in anything else you need.

* Certified to the Federal Regulations that allow less forceful air bags. Always use seat belts. Remember a backseat is the safest place for children.

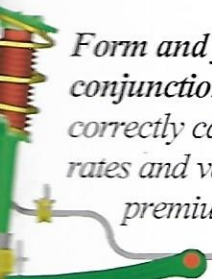


DODGE



Cool, calm and connected

A solid stance. Available 15-inch aluminum wheels, and tires that have a low-profile sidewall provide a composed ride and responsive handling, especially in combination with Neon's wheels-to-the-corners, Next Generation cab-forward design.



Form and function conjunction. Neon's engineers correctly calibrated spring rates and valve rates in the premium strut dampers to allow proper suspension travel.

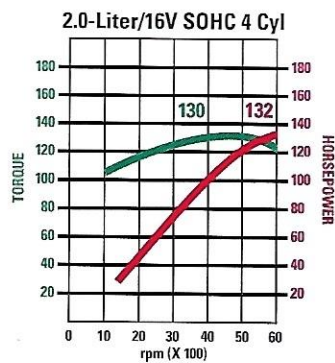
Rack-and-pinion steering gives Neon disciplined cornering. Front and rear stabilizer bars provide roll control, for a smooth, solid ride.



The Dodge/Skip Barber Driving School and the Skip Barber Racing School have chosen Dodge as the exclusive supplier of vehicles and engines for all teaching and racing operations. For information, call 1-800-221-1131, e-mail



m, eed.



Authority figure: 132 horsepower. Neon's 2.0-liter SOHC, 16-valve, four-cylinder engine uses sequential multipoint fuel injection to blend fuel and air in the combustion chambers. Expect efficient operation whether the engine is hot or cold. We modified the engine mounts to reduce engine vibration. And you'll enjoy Neon's enhanced acceleration, responsiveness, and top-end passing capability.

Clean and green.

Neon's available three-speed automatic transaxle and related components, help Neon meet California's strict criteria as an Ultra Low Emission Vehicle (ULEV). With standard five-speed manual transaxle, Neon qualifies as a Low Emission Vehicle (LEV).

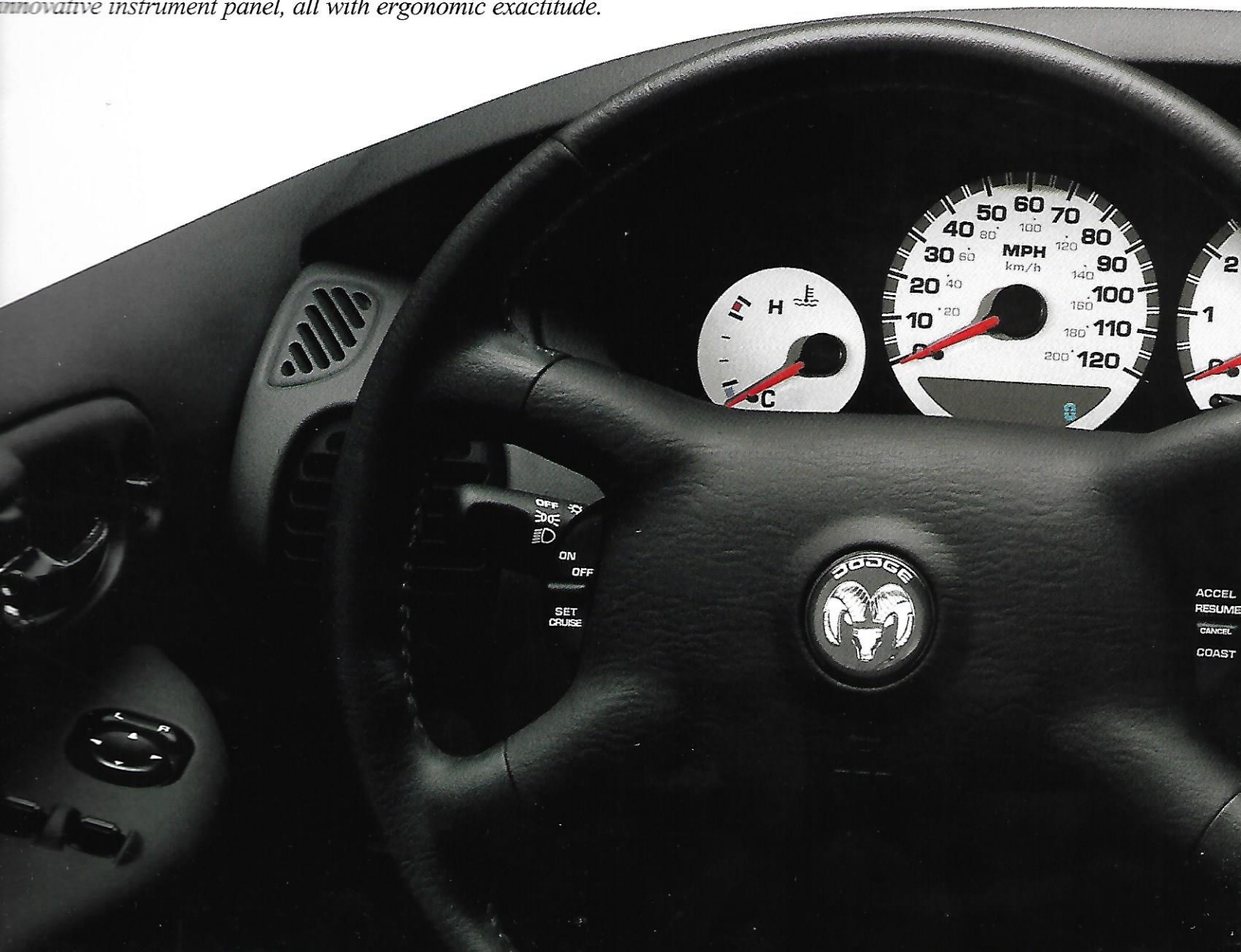




*Wise engineering, super-smart design.
Neon's interior layout was the first from
Dodge to be designed using Virtual*

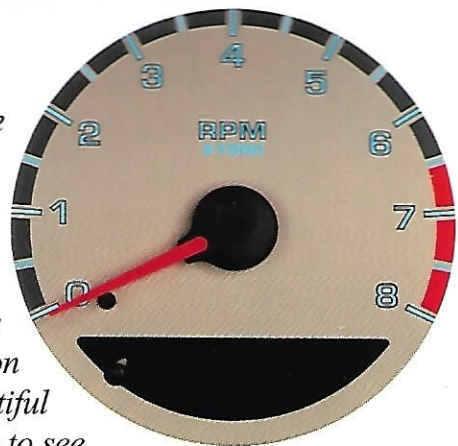
A truly intelligent

First seen on-screen. Through the use of Virtual Reality technology, your experience as a driver inside Neon was previsualized by creating one electronic prototype after another. By accurately duplicating real-world movements, Dodge was able to position switches, seats, console, and an innovative instrument panel, all with ergonomic exactitude.



ity. Dodge used leading-edge computer-
d design technology (CATIA®) to make
n the next big thing in small cars.

*Sophisticated, off-white
gauge faces — including the
tachometer shown here — are
backlit by cool, blue-green
illumination when headlamps
are turned on at night. The
effect is the perfect combination
of form and function: beautiful
to look at and easy to see.*



gent ork station.







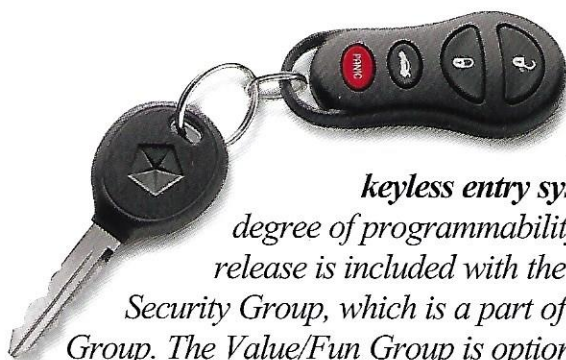


There are plenty of sweet spots in Neon's interior. For example, a large glove box, with designed-in features like pencil and tire gauge holders. This is also an interior that looks as good as it feels, with a handsome array of standard and available fabrics.



Find true happiness, as well as your tapes and CDs. Neon's center console is outfitted with smart moldings that let it hold anything from tissues to tapes, beverages to a litter bag. You can even see how the world sees you, with dual, illuminated vanity mirrors on the sun visors, included with the optional Light Group.

Hip



Neon's remote keyless entry system has a new degree of programmability. A power trunk release is included with the Sentry Key™ Security Group, which is a part of the new Value/Fun Group. The Value/Fun Group is optional on Neon and Neon ES, and includes features such as factory power sunroof, power front windows, power locks, and more.*

**Late availability.*

Space is the place. Neon has a knack for versatility. A standard 60/40 split-folding rear seatback — plus trunk space of 13.1 cubic feet, and a total interior volume of 103.4 cubic feet — lets you slide in your preferred gear for work or pleasure.



Super sonics. Neon's standard AM/FM stereo radio with cassette player and changer controls includes six speakers — including high-range dome tweeters. There's also an optional four-disc CD changer that mounts in the instrument panel, and is controlled by buttons located in the face of the radio.



room.





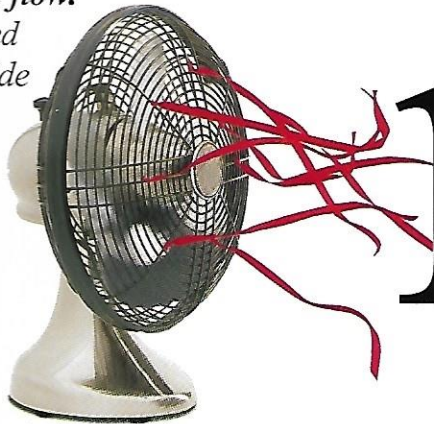
DODGE



You have to

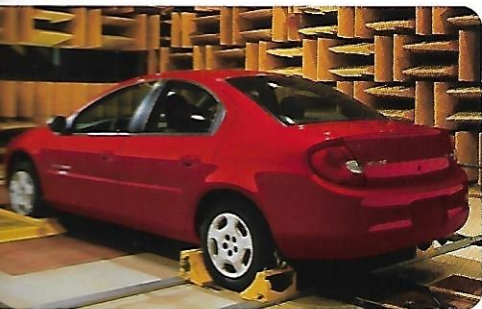
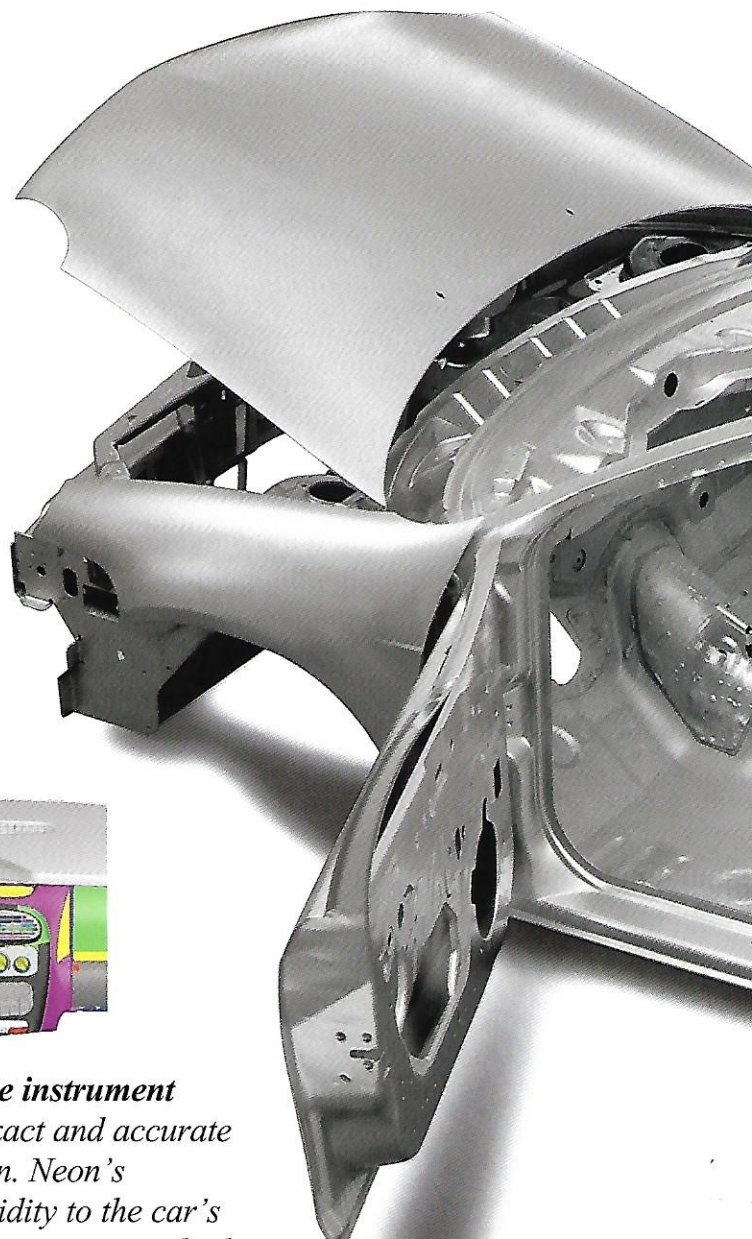
Going with the flow.

Dodge perfected the airflow inside Neon's cabin by performing computer simulations. The result is everything a breeze should be: calm, comfortable, and quiet.



remain

Seen but not heard. Full-framed doors and stamped, u-section door hangers create a tighter, quieter seal, with more precise operation of the windows.



The strong, silent type. Neon's engineers stiffened its structure with innovations inside, outside, and beneath. Then they used an automated process to inject heated, expandable foam into recesses and body cavities, all to make Neon a quieter place to be, no matter what road you're on.



An ingeniously innovative instrument panel was designed for exact and accurate "self-docking" installation. Neon's instrument panel adds rigidity to the car's

ne right to silent.

At the base of the windshield, a specially designed trim piece directs rainwater upward and sideways toward the windshield pillars. Moldings at the pillars then guide the water up and over Neon's roof. That's why you'll still be seeing clearly when Neon slices efficiently through wind and rain.

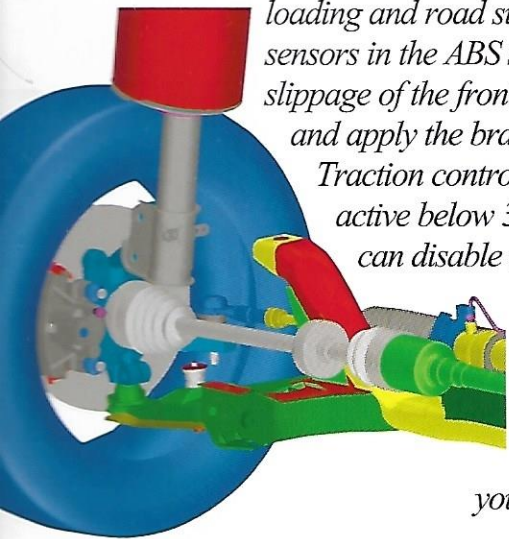


Safety starts from the ground up. Available four-wheel disc antilock brakes (ABS) also have Low-Speed Traction Control and Electronic Variable Brake Proportioning (EVBP) to automatically adapt to variations in vehicle

loading and road surface. Wheel sensors in the ABS system can feel slippage of the front driving wheels and apply the brakes to stop it.

Traction control is automatically active below 35 mph. You can disable it with a switch

on the instrument panel. Indicator lamps in the instrument cluster will tell you whether it's off.



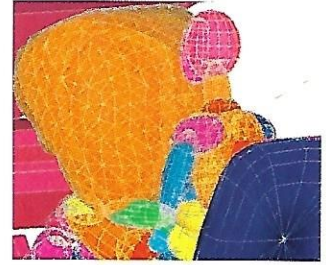
Top S IS NO





Next Generation driver and front-passenger air bags open less forcefully than previous air bags in the event of a frontal collision. In addition, the front-passenger air bag features an environmentally friendly hybrid heated-gas inflator module. If the air bag deploys, the only perceived residual product is water vapor.*

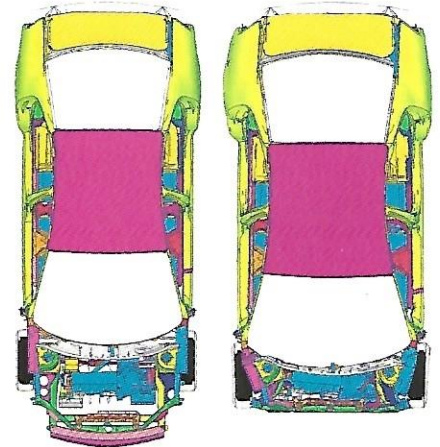
**Certified to the Federal Regulations that allow less forceful air bags. Always use seat belts. Remember a backseat is the safest place for children.*



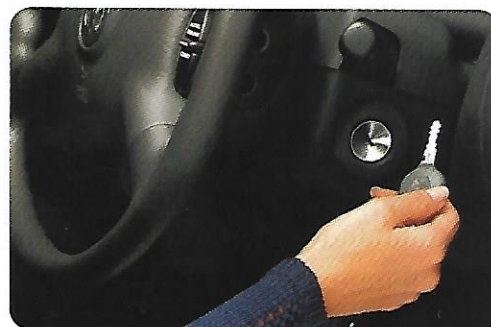
Security Secret.

***Being prepared.** Should Neon ever be involved in a serious accident, the body structure's safety cage and doors quickly help disperse crash energy. Dynamic side-impact intrusion protection is another good reason why Neon rates so highly in safety.*

***Safety first, last, always.** Neon loves children. You'll find user-ready child seat top tether anchors in the rear seats. Height-adjustable front shoulder belts. An automatic transaxle Brake-Park Interlock feature on the gear shift system, and a seat belt warning lamp on the instrument panel. Neon also has a Battery-Saver Feature to shut off the dome lamp. Available speed-sensitive power door locks (programmable by you) automatically lock the doors at 15 mph.*



***"Smart" start.** The Sentry Key™ Engine Immobilizer, part of the available Sentry Key Security Group, makes your ignition key more of an owner-recognition device. Thanks to transponder and encryption algorithm technology, your Neon will start only at the turn of your key. No other key, device or technique will start Neon successfully.*



Standard features and options.

All Neon models include:

Air Bags — Next Generation driver and front-passenger
Body-color Moldings — Body-color
Brakes — Power-assisted front disc/rear drum
Brake-Park Interlock — Cannot shift automatic transaxle out of "PARK" until the brake pedal is depressed
Console — Floor-mounted, includes storage armrest, cup holders, coin holder, front cubby box, cassette and CD storage; and tissue pack holder and integral cup holder for rear-seat passengers
Door Hooks — Rear (2)
Radio — Digital, integral to all radios
Clutch-Starter Interlock — Cannot start engine until manual transaxle clutch is depressed
Cup Holders — Front (3), Rear (1)
Defroster — Electric rear window
Door Handles — Body-color
Home Lamp — With theater dimming feature
Door Locks — Child-protection rear
Dynamic Side-Impact Intrusion Protection — Includes steel side-guard door beams and structural body reinforcements
Fascias — Body-color, painted or molded-in color, front and rear²
Floor Mats — Front and rear, carpeted
Fuel Tank — 12.5-gallon
Glass — Tinted, all windows
Glove Box — Locking with integral pen and tire pressure gauge holder

Instrument Cluster — Analog, includes speedometer, odometer, trip odometer; gauges for fuel level, engine coolant temperature; warning lamps for brake system, low oil pressure, check engine, seat belts, air bags and high-beam headlamps

Map Pockets — Front doors

Mirrors

Exterior — Rearview, driver-side remote, passenger-side manual
 Interior — Day/night rearview
 — Dual non-illuminated visor-mounted vanity mirrors

Power Outlet — Located in front center panel

Seat Belts — Color-keyed, three-point Unibelt for outboard seating positions, front outboard position includes height-adjustable shoulder belts, traveling inboard buckles, lap belt in rear center location

Seat Belt Cluster Lamp — Stays on after engine start until driver buckles up

Steering — Power-assisted rack-and-pinion

Steering Column — Height-adjustable

Sound System — AM/FM stereo radio with cassette player, CD changer controls and six speakers

Suspension — Four-wheel fully independent

Tires — Compact spare with scissors jack

Trunk Lamp — Illuminates trunk space

User-Ready Child Seat Top Tether Anchors¹ — Located on rear window filler panel at each backseat position to minimize movement of after-market child seats

Wiper System — Two-speed with variable intermittent mode and mist

¹ Certified to the Federal Regulations that allow less forceful air bags. Always use seat belts. Remember a backseat is the safest place for children.

² Fascias are molded-in color when ordering Bright White or Flame Red.

Features, options and package groups.

• = Included P = Available within package noted in parentheses O = Optional

Engine	Transaxle	Neon	Neon ES
2.0L SOHC 16V 4-cylinder	5-speed Manual 3-speed Automatic	21D 22D	21G 22G
Air Conditioning — Manually adjustable		O	•
Antilock Brake Group — 4-wheel disc brakes, traction control and tachometer (requires air conditioning)		O	O
Assist Handles — Passenger (4) (Included with Power Sunroof)		P	•
Brakes — 4-wheel disc antilock brakes (included in Antilock Brake Group)		P	P
Door Locks — Power (included in Power Convenience Group)		P	•
Engine Block Heater		O	O
Instrument Panel Trim — Includes diamond weave on center panel and shifter bezel on automatic transaxle; bezel color is coordinated with interior color			•
Lighting			
Exterior — Fog lamps, integral with front fascia			•
Interior — Reading lamps integral with rearview mirror (included in Light Group)		P	P
— Dual illuminated visor vanity mirrors (included in Light Group)		P	P
Mirrors			
Interior — Rearview day/night with integral map/reading lamps (included in Light Group)		P	P
Exterior — Dual power heated foldaway (included in Power Convenience Group)		P	•
Light Group — Lamps for glove box, interior rearview mirror reading day/night, dual illuminated visor-mounted vanity mirrors, underhood and console flood (requires air conditioning)		O	O
Power Convenience Group — Power heated foldaway mirrors, power front windows (requires Sentry Key™ Security Group and air conditioning)		O	•
Remote Keyless Entry — Controls for door locks, alarm, and trunk release (included in Sentry Key Security Group)		P	•
Sentry Key™ Security Group — Engine immobilizer, peripheral alarm, remote keyless entry, power door locks with speed-sensitive central locking, remote power trunk release and tachometer (requires air conditioning)		O	•
Seats — Picasso cloth, front low-back buckets with 2-way adjustable locking head restraints and rear bench with 60/40 split-folding seatback — Shadow cloth, front low-back buckets with 2-way adjustable locking head restraints and driver and front-passenger side seatback map pockets. Rear bench with 2-way adjustable head restraints and a 60/40 split-folding seatback		•	•
Sound Systems — 4-disc Instrument Panel Mounted CD Changer		O	O
Speed Control — Electronic with steering wheel-mounted controls		O	O
Steering Wheel — Leather-wrapped			•
Sunroof — Power with 4 assist handles (Included with Value/Fun Group)		P	P
Tachometer — Includes Smart Fuel, low-fuel warning lamp and off-white instrument cluster gauges (included in Antilock Brake Group, and/or included in Sentry Key Security Group)		P	•
Tires — P185/65R14 BSW all-season touring — P185/60R15 BSW all-season touring (included with 15" Aluminum wheels)		• P	• •
Trunk Lid Release — Electric remote control (included in Sentry Key Security Group)		P	•
Value/Fun Group — Includes Power Convenience Group, Sentry Key Security Group, and Power sunroof		O ¹	O
Wheels — 14" steel wheel with bolt-on wheel covers — 15" steel wheel with bolt-on wheel covers — 15" aluminum wheels		• • O	• • O

Colors, models, accessories, wheels, and trim.



Flame Red



Salsa Red Pearl Coat



Deep Cranberry Pearl Coat



Deep Amethyst Pearl Coat



Patriot Blue Pearl Coat



Black



Bright White



Forest Green Pearl Coat



Bright Silver Metallic



Cinnamon Glaze Metallic

Models



Neon



Neon ES



High-Quality Mopar Accessories are specially designed by Dodge and Mopar engineers to fit your Neon exactly. For information on

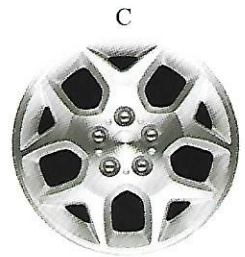
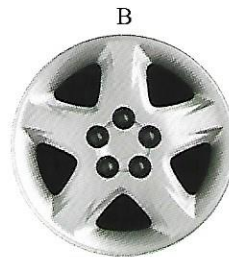
Mopar's full line of accessories, ask your dealer for a copy of the Dodge Car Accessories from Mopar brochure.

Wheels and Wheel Covers

A 14" Bolt-on wheel cover, standard on Neon

B 15" Bolt-on wheel cover, standard on Neon ES

C 15" Aluminum wheel, available on Neon and Neon ES



Fabric and Trim

A Shadow Cloth Included on Neon ES in Agate

B Shadow Cloth Included on Neon ES in Taupe

C Picasso Cloth Included on Neon in Agate

D Picasso Cloth Included on Neon in Taupe



The cars and trucks shown clockwise from bottom left: Viper, Durango R.T., Stratus, Avenger, Neon, Caravan, Ram Conversion Van, Dodge Quad Cab,™ Ram Pickup, and Durango R.T.



We'd like to take you

Dodge can get you there with vehicles that are easy to own and exciting to drive, and with programs that make acquiring and maintaining your new Dodge car or truck a truly satisfying experience. The way is by providing our owners with timely communications that give them important information right in their homes. And when they visit their dealership, Dodge owners get more of what they want, including the fastest, most courteous service possible.

We're honored. Over the last several years, Dodge cars and trucks have received numerous awards from prestigious organizations that track owner satisfaction and vehicle quality. Other honors have come

from publications' editors who evaluate cars and trucks for a living. Although we don't create vehicles to win awards, we're still flattered every time another one finds a home in the Dodge trophy case. To learn about the most recent awards bestowed upon our Dodge vehicles, call 1-888-4-A-DODGE.

Call Us At: 1-888-4-A-DODGE Talk to someone who can tell you what you want to know about the entire Dodge lineup. You can order product literature, get the price of a vehicle equipped the way you like it, and find the Dodge dealer closest to you.

3/36 Customer One Care™ Plan

Your Dodge vehicle is covered by DaimlerChrysler Corporation's

CustomerOne Care

3/36 Bumper-To-Bumper

24-Hour Roadside Assistance

This coverage includes a 3-year or 36,000-

mile Bumper-To-Bumper Limited Warranty as well as Roadside Assistance for 3 years or 36,000 miles. Call 1-800-521-2779 for 24-hour, 7-day-a-week emergency road service.* A 5-year or 100,000-mile Outer-Panel Rust-Through Limited Warranty covers the repair of exterior sheet metal if perforated by corrosion. Restrictions apply. See your dealer for details.

*Excludes wiper blades, clutch and brake linings, brake rotors and drums, normal maintenance items and tires (covered by their own manufacturer's warranty).

† Road service provided by Cross Country Motor Club, Inc. (In California, Cross Country Motor Club of California, Inc.)



ove to home.

Service Contracts

DaimlerChrysler Corporation

Additional protection for Dodge vehicles is available through optional DaimlerChrysler Service Contracts. These service plans are available in a variety of time and mileage combinations to meet your driving needs. Ask your dealer for more information, or call 1-800-442-2666.

Mopar To keep your Dodge vehicle performing at its optimum, make sure it's serviced regularly at your Dodge dealership, where highly trained technicians have access to a complete stock of Mopar replacement parts and the sophisticated

Chrysler Financial Company L.L.C.* offers a full range of automotive financing which provides flexible terms for qualified buyers. Many of these plans can be customized to fit your particular budget and make your new vehicle even more affordable. They include the College Graduate Program and Gold Key Lease short-term financing. Ask your sales consultant for details.

* Chrysler Financial Company L.L.C. programs are offered subject to availability and state and local laws.

Chrysler Lease Plans
Chrysler Financial Company L.L.C. Gold Key Lease has the flexibility to fit your vehicle choice and your lifestyle. If the idea of driving a new vehicle more often without penalties sounds



ON THE JOB

Commercial operators of eligible

Dodge cars, trucks, and vans can learn about our Dodge On The Job program by calling 1-877-ON-THE-JOB.

Commercial Finance Options
Chrysler Financial's Commercial Finance Options Program offers several finance and lease options to small and midsize businesses, municipalities, and small fleet operators. "Line of Credit" financing is also available under this program. Please see your dealer for details.

Cash reimbursement is available for qualified adaptive driving devices on new Dodge vehicles. Ask your dealer or call



Dodge Different.

You won't find the obvious at Dodge. In fact, our designers and engineers pride themselves in exploring previously uncharted territory.

It's a path that began over 10 years ago with the creation of the Viper RT/10 concept car. That concept became a reality. And so did a different approach to the creation of automobiles. Today, all Dodge cars and trucks are created that way. By closely knit teams of talented people from every automotive-related discipline. Their assignment: Find different ways to be better. And drive better. That means producing vehicles that work better, thanks to innovations like minivans that are easier to get into and out of. Pickups that can haul and tow more, in more ways. Sedans that are sleek, yet spacious and exciting to drive. A sport utility that stakes out its own domain. And a sports car that's unrivaled on the road. And on the track. Each one embodies a totally different approach to the tried and true. And, like Dodge, each has become a quickly moving target the competition seeks to emulate.