

2022 GMC

SIERRA HD



GMC

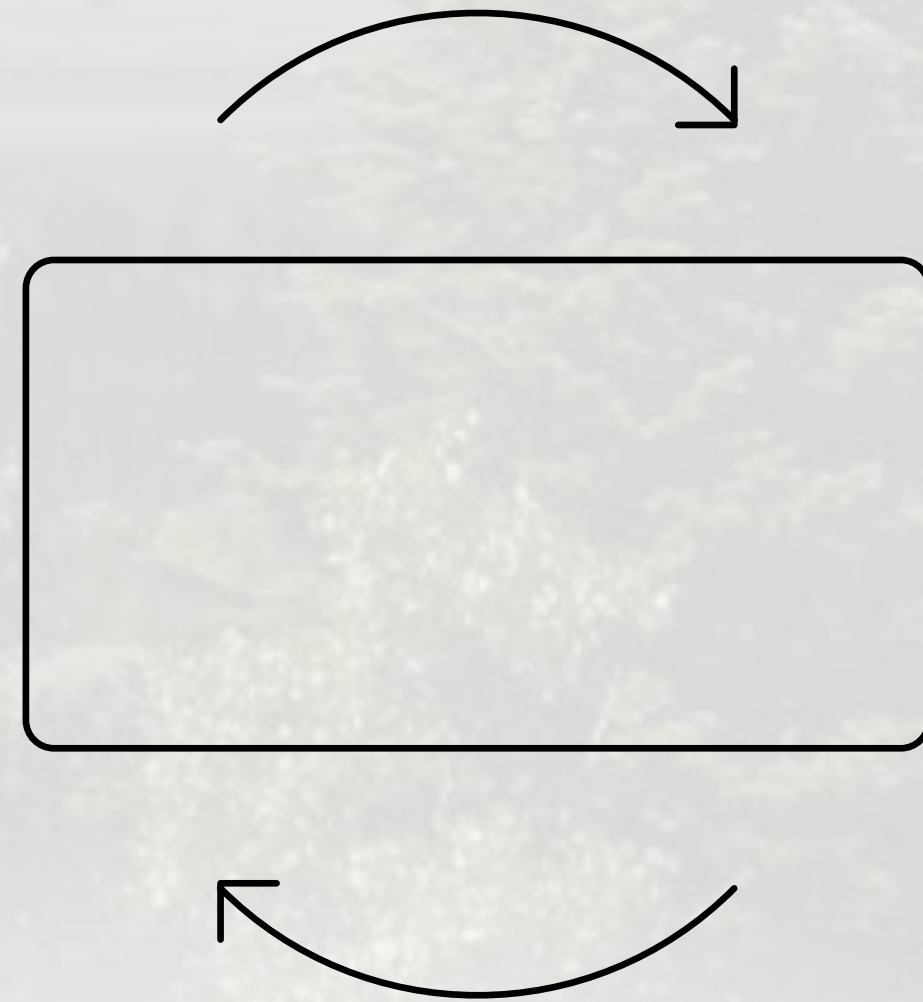
NAVIGATION GUIDE

3

CLICK THE HOME BUTTON TO RETURN TO THE TABLE OF CONTENTS.



1



ROTATE FOR A BETTER VIEWING EXPERIENCE.

— GMC Connected Services¹

2

CLICK ON UNDERLINED TEXT TO REVEAL IMPORTANT LEGAL INFORMATION.

4

CLICK THE X TO CLOSE DISCLAIMERS.

¹Connected services vary by vehicle model and require active service plan, working electrical system, cell reception and GPS signal. Does not include emergency or security services. See onstar.com for details and limitations.





SIERRA HEAVY DUTY CONTENTS

CLICK ANY TITLE TO EXPLORE A SPECIFIC CHAPTER.

3	INTRODUCTION	25	CARGO BED	34	TRAILERING	53	INTERIOR COLORS AND TEXTURES
6	DENALI	27	MULTIPRO	42	SAFETY AND TECHNOLOGY	54	WHEELS
14	AT4	29	CAPABILITY	48	CONNECTIVITY	58	ACCESSORIES
22	PRO, SLE AND SLT	31	PERFORMANCE	52	EXTERIOR COLORS	62	IMPORTANT WORDS AND LEGAL DISCLOSURES

MEET THE 2022 GMC SIERRA HEAVY DUTY

With premium amenities, authentic materials and available intuitive tech, Sierra Heavy Duty has the powerful capability that's made to pull your world.



Due to current supply-chain shortages, certain features shown throughout this catalog, including on the cover, have limited or late availability, or are no longer available. See the window label or a dealer regarding the features on an individual vehicle.



BIG-TIME CAPABILITY TO PULL YOUR WORLD

The 2022 Sierra Heavy Duty has serious power for serious towing. It's made to take on the world—with yours confidently in tow.

- 445 hp and 910 lb-ft of Torque With Available 6.6L Duramax Turbo Diesel Engine
- Up to 36,000 lbs¹ of Max Trailering Capability (30,990 lbs¹ as shown)
- Up to 15 Camera Views,² Including High Definition Surround Vision, Are Available



Due to current supply-chain shortages, certain features shown have limited or late availability, or are no longer available. See the window label or a dealer regarding the features on an individual vehicle.



THERE'S A SIERRA HEAVY DUTY TO POWER YOUR LIFE



Sierra HD Pro is tough and has the robust capability to get the job done and be ready for more.



Sierra HD SLE stylishly provides the power to go from jobsite to weekend without skipping a beat.



Sierra HD SLT can take on your day and all that entails with the perfect blend of premium amenities, stylish design and robust capability.



Sierra HD AT4 is ready to answer the call to adventure and take you beyond the boundaries.



Sierra HD Denali is the pinnacle of premium with the capability to take on life's challenges.



SIERRA HD DENALI IS THE PINNACLE OF PREMIUM POWER

Sierra HD Denali is the heavy-duty road warrior with the premium accommodations of a luxury vehicle, created for those who take on the world in first-class style.

Due to current supply-chain shortages, certain features shown have limited or late availability, or are no longer available. See the window label or a dealer regarding the features on an individual vehicle.



Due to current supply-chain shortages, certain features shown have limited or late availability, or are no longer available. See the window label or a dealer regarding the features on an individual vehicle.

ROBUST CAPABILITY

- 6.6L Duramax Turbo Diesel Engine Delivering 445 hp and 910 lb-ft of Torque Is Available
- Allison® 10-Speed Automatic Transmission Is Available
- Large Grille and Functional Hood Scoop Provide Cool Air to the Available Duramax Turbo Diesel Engine
- Off-Road Suspension With Rancho® Shocks¹ and Skid Plates



TAKE ON THE WORLD IN SIGNATURE DENALI STYLE



- Chrome Vertical Recovery Hooks¹
- Smoked Amber LED Roof Marker Lamps
- 20" Multidimensional Polished Aluminum Wheels (SRW Models)
- High-Intensity LED Headlamps
- LED Taillamps, Wheel Arch Lamps, Fog Lamps and Cargo Bed Lamps
- Power-Retractable Assist Steps With Stainless-Steel Accents and LED Perimeter Lighting Are Available

Due to current supply-chain shortages, certain features shown have limited or late availability, or are no longer available. See the window label or a dealer regarding the features on an individual vehicle.



ENHANCED JOURNEYS AWAIT

Due to current supply-chain shortages, certain features shown have limited or late availability, or are no longer available. See the window label or a dealer regarding the features on an individual vehicle.

WELL-APPOINTED

There's a lot to see out there, and Sierra HD Denali lets you experience it in premium style and comfort.

- More Crew Cab Front Head and Leg Room Than Any Competitor¹
- Perforated Forge Leather Seating Surfaces
- Authentic Open-Pore Wood
- Aluminum Trim and Chrome Accents
- Heated and Ventilated Front Seats



Due to current supply-chain shortages, certain features shown on this spread have limited or late availability, or are no longer available. See the window label or a dealer regarding the features on an individual vehicle.





SIERRA HD DENALI KEEPS YOU INFORMED AND IN COMMAND



Stay in command with advanced technologies such as the available 15" diagonal Head-Up Display that projects key information onto the windshield to help you keep your eyes on the road.

- Multicolor 15" Diagonal Head-Up Display Is Available
- Rear Camera Mirror,¹ a First for a Heavy Duty in Its Class, Is Available
- Up to 15 Camera Views,² Including Transparent Trailer View, Are Available



SIERRA HD DENALI BLACK DIAMOND EDITION

The Sierra HD Denali Black Diamond Edition does the seemingly impossible by taking the Denali Ultimate Package on 2500 and 3500 HD SRW models and adding features to take it to even greater heights.

Due to current supply-chain shortages, certain features shown have limited or late availability, or are no longer available. See the window label or a dealer regarding the features on an individual vehicle.



AN EVEN HIGHER LEVEL OF PREMIUM



- Ebony Twilight Metallic Exterior Color
- Exclusive 20" High-Gloss Black Painted Aluminum Wheels
- Power-Retractable Assist Steps With Stainless-Steel Accents and LED Perimeter Lighting

- 6.6L Duramax Turbo Diesel V8 Engine Paired With the Allison 10-Speed Automatic Transmission
- Premium Floor Liners With Removable Carpet Inserts

- Accessory MultiPro™ Audio System By KICKER®¹
- Multicolor 15" Diagonal Head-Up Display and Rear Camera Mirror²



ANSWER THE CALL TO ADVENTURE IN SIERRA HD AT4

Sierra HD AT4's unique adventure-ready styling and capability are made to take on off-road obstacles.



Due to current supply-chain shortages, certain features shown have limited or late availability, or are no longer available. See the window label or a dealer regarding the features on an individual vehicle.

AT4



SERIOUS CAPABILITY FOR SERIOUS ADVENTURE



Power through even the toughest terrain with the 6.6L V8 direct-injection gasoline engine or the available 6.6L Duramax Turbo Diesel engine paired with the Allison 10-speed automatic transmission and advanced off-road capabilities:

- 2-Speed AutoTrac Transfer Case With Active Automatic 4WD
- Off-Road Suspension With Rancho Shocks and Skid Plates

- Traction Select System With Off-Road and Tow/Haul Modes
- Hill Descent Control and Hill Start Assist
- All-Terrain Tires Are Standard and Mud-Terrain¹ Tires Are Available

Due to current supply-chain shortages, certain features shown have limited or late availability, or are no longer available. See the window label or a dealer regarding the features on an individual vehicle.



Due to current supply-chain shortages, certain features shown have limited or late availability, or are no longer available. See the window label or a dealer regarding the features on an individual vehicle.



MASTER UNFORGIVING COUNTRY

Take on the trail with Rancho shocks, skid plates, an Eaton® automatic locking rear differential and the choice of all-terrain tires or available mud-terrain¹ tires.

CONFIDENTLY CLEAR HARSH TERRAIN

Go off-road with a max ground clearance of more than 10", along with a max front-approach angle of nearly 27 degrees on select models.

IMPROVED TRACTION AND CONTROL ON GRAVEL OR MUD

Easily shift among multiple settings with the Traction Select System, which includes an Off-Road mode.

THE POWER YOU NEED WHERE YOU NEED IT

Seamlessly shift between two- and four-wheel drive based on surface conditions with the 2-speed AutoTrac transfer case with an active automatic 4WD setting.





EXPLORE IN STYLE

Sierra HD AT4's rugged yet refined Jet Black interior with Kalahari accents offers premium materials and advanced technologies to take on the world in comfort and control.

Due to current supply-chain shortages, certain features shown have limited or late availability, or are no longer available. See the window label or a dealer regarding the features on an individual vehicle.

UPGRADE YOUR ADVENTURES

SIERRA HD AT4 OFFERS:

- Leather-Wrapped Heated Steering Wheel¹
- 10-Way Power Front Seats
- Heated and Ventilated Front Leather Seating Surfaces¹



Heated steering wheel feature will not function on certain models without dealer retrofit. See dealer for details.



BE AN ACTION HERO

Stand out with a bold, heroic design and ruggedly functional enhancements:

- World's First Six-Function GMC MultiPro Tailgate
- Red Vertical Recovery Hooks¹
- High-Intensity LED Headlamps and LED Taillamps, Wheel Arch Lamps, Fog Lamps and Cargo Bed Lamps
- Spray-on Bedliner With AT4 Logo



Due to current supply-chain shortages, certain features shown have limited or late availability, or are no longer available. See the window label or a dealer regarding the features on an individual vehicle.



STAY AWARE OF THE ACTION

Get a clear view of key vehicle information projected onto the windshield in your line of sight with the available multicolor 15" diagonal Head-Up Display. Information includes an Off-Road Inclinator that shows the fore-and-aft tilt, front tire angle and left-and-right tilt.

Keep your eyes on the prize with advanced on- and off-road monitoring technology:

- Multicolor 15" Diagonal Head-Up Display (HUD) and Rear Camera Mirror¹ Are Available
- Up to 15 Camera Views,² Including Surround View and Transparent Trailer View, Are Available





DO MORE WITH MORE

Sierra HD Pro, Sierra HD SLE and Sierra HD SLT are premium pickups engineered with the robust capability you need to tow more, get more done or have more fun.

Due to current supply-chain shortages, certain features shown have limited or late availability, or are no longer available. See the window label or a dealer regarding the features on an individual vehicle.



Due to current supply-chain shortages, certain features shown on this spread have limited or late availability, or are no longer available. See the window label or a dealer regarding the features on an individual vehicle.



SIERRA HD PRO, SIERRA HD SLE AND SIERRA HD SLT OFFER:

- 6.6L Gasoline V8 Engine
- Tow/Haul Mode
- 6.6L Duramax Turbo Diesel V8 Engine Paired With the Allison 10-Speed Automatic Transmission Is Available
- World's First Six-Function GMC MultiPro Tailgate Is Standard on SLE and SLT and Available on Pro
- Multiple Camera Views,¹ Including Surround View and Transparent Trailer View, Are Available on SLT Only
- ProGrade™ Trailering System With In-Vehicle Trailering App² Is Standard on SLT and Available on SLE. Not Available on Pro.
- Traction Select System With Off-Road Mode Is Available on SLE and SLT

ROOM WITH A VIEW

Take charge in the roomy, well-appointed cabin—with a tall, commanding view.

Get comfortable with available features such as premium perforated leather-appointed front outboard seats and a heated leather-wrapped steering wheel.¹



Due to current supply-chain shortages, certain features shown have limited or late availability, or are no longer available. See the window label or a dealer regarding the features on an individual vehicle.



CARRY THE LOAD

Sierra Heavy Duty's cargo bed is long and wide and features more cargo bed volume than any competitor in its class.¹ The bed height makes for comfortable lift-in loading and is optimized for gooseneck/fifth-wheel trailer clearance.



- Cargo Volume: Standard Bed, 69.6 cu. ft.¹
Long Bed, 83.5 cu. ft.¹

- Roll-Formed High-Strength Steel Bed Floor

- 12 Cargo Tie-Downs Rated at 500 lbs¹
Per Corner

- CornerStep Rear Bumper With Large Footwells

- Side Bed Steps Are Standard for Easy Access
Even With a Gooseneck or Fifth-Wheel
Trailer Hitch

- Up to Nine Additional Movable Accessory
Upper Tie-Downs Are Available

- LED Cargo Bed Lighting Is Available

- 120-Volt Bed-Mounted Power Outlet Is Available

- Spray-on Bedliner Is Available

- Factory-Installed Gooseneck/Fifth-Wheel Prep
Package Is Available



MULTIPRO TAILGATE

The World's First Six-Function GMC MultiPro Tailgate is now standard on all models, except Sierra HD Pro.

Enjoy your music wherever your Sierra Heavy Duty takes you with the available accessory MultiPro Audio System by KICKER[®],¹ which can be integrated into the MultiPro Tailgate.

And new for 2022, you can easily disable the inner gate to prevent it from being opened when a hitch or other equipment is installed.







HEAVY DUTY IS MORE THAN A NAME

Sierra Heavy Duty is the real deal—with the strength and pulling power to haul the heaviest loads while still delivering a smooth, comfortable ride.

Due to current supply-chain shortages, certain features shown have limited or late availability, or are no longer available. See the window label or a dealer regarding the features on an individual vehicle.



ENGINEERED FOR ACTION

PURPOSE-BUILT FOUNDATION

- Combination of High-Strength and Ultra-High-Strength Steel Used Throughout the Cab and Frame
- Fully Boxed Ladder Frame With Nine High-Strength Steel Cross-Members
- Isolating Cab Mounts

RESPONSIVE SUSPENSION

- Short-/Long-Arm Independent Front Suspension
- X31 Off-Road Suspension Package With Rancho Shocks Is Available
- Digital Variable Steering Assist Is Available

Due to current supply-chain shortages, certain features shown have limited or late availability, or are no longer available. See the window label or a dealer regarding the features on an individual vehicle.



THE PROOF IS IN THE POWER

Sierra Heavy Duty's powerful towing capability begins with robust drivetrain components like the available 6.6L Duramax Turbo Diesel engine with the Dual Path Air Induction System paired with the Allison 10-speed automatic transmission, which delivers optimized gear shifts for maximum power, torque and efficiency.

AVAILABLE 6.6L DURAMAX TURBO DIESEL V8 ENGINE:

- 445 hp With 910 lb-ft of Torque
- Large 28" Variable-Speed Cooling Fan
- Dual Path Air Induction System
- Factory-Installed Diesel After-Run
- Intelligent Diesel Exhaust Brake System
- Up to 36,000-lb¹ Max Trailering Capability Is Available

AVAILABLE ALLISON 10-SPEED AUTOMATIC TRANSMISSION:

- Optimizes Gear Shifts for Maximum Power, Torque and Efficiency
- Right Gear for the Situation Keeps rpm in Ideal Power Band
- Chain-Driven Power Takeoff² Is Available



FUEL YOUR PURSUITS

Get after it with Sierra Heavy Duty's innovative and powerful purpose-built gasoline engine.

6.6L DIRECT-INJECTION GASOLINE V8

- 401 hp and 464 lb-ft of Torque
- First Heavy-Duty Truck in Its Class With a Direct-Injection Gasoline Engine
- Continuously Variable Valve Timing (VVT) for Precise Air Delivery
- Paired With a 6-Speed Automatic Transmission
- 17,370-lb¹ Max Trailering Capability (16,260 lbs¹ as Shown)



Due to current supply-chain shortages, certain features shown have limited or late availability, or are no longer available. See the window label or a dealer regarding the features on an individual vehicle.



POWERED TO PULL YOUR WORLD

36,000 LBS

SERIOUS
CAPABILITY



Achieving an available max trailering capability of up to 36,000 lbs¹ starts with strong, resilient chassis components—frame, axles and prop shaft—and is made possible through powerful advanced engineering.



STOPPING POWER

BRAKING CAPABILITIES INCLUDE:

- Large Disc Brakes With Duralife Rotors
- Brake Pad Life Monitor
- Hill Start Assist
- Electric Parking Brake
- Steep Grade Apply
- Park Grade Hold Assist



SIERRA HEAVY DUTY MEANS TRAILERING

Sierra Heavy Duty is strong and smart, making it the ultimate expression of towing capability and innovation with an advanced suite of intelligent trailering technologies to help you stay in control of your truck and trailer.

The available ProGrade Trailering System streamlines the hitching and trailering process to help give you more control and confidence.

Due to current supply-chain shortages, certain features shown have limited or late availability, or are no longer available. See the window label or a dealer regarding the features on an individual vehicle.



IN-VEHICLE TRAILERING APP

The available in-vehicle Trailing App¹ is integrated with and accessible through Sierra's infotainment system,² with features including defined trailer profiles based on trailer name, trailer type and trailer hitch type. There are also maintenance reminders, predeparture checklists, a Trailer Light Sequence Test, trailer electrical diagnostics and an available Trailer Tire Pressure Monitoring System.³



TRAILER WITH THE myGMC MOBILE APP

The available myGMC mobile [app](#)¹ gives you access to features such as creating and managing trailer profiles (shareable with other compatible Sierra owners), a Trailer Light Sequence Test, predeparture checklists (or create your own) and a Trailer Load Calculator to determine the combined weight of your truck and trailer. You can monitor trailering operations and view and receive alerts on key components of your trailer such as tire pressure [monitoring](#)² and trailer miles.



SMART TRAILER INTEGRATION

Sierra Heavy Duty offers the available ASA Electronics iN•Command® Control System.¹ It lets you monitor and control a range of smart system functions, such as water tank levels, climate controls and even power slide-outs in recreational trailers equipped with GlobalConnect technology. It's integrated with and accessible through the myGMC mobile app² (on compatible iPhone® and Android™ smartphones) or on Sierra Heavy Duty's infotainment system³ via wireless Apple CarPlay®⁴ and wireless Android Auto™⁵





TRACTION SELECT SYSTEM WITH TOW/HAUL MODE

The available Traction Select System lets you switch seamlessly among multiple traction configurations (based on equipment), including Tow/Haul mode and available Off-Road mode, to optimize powertrain calibrations, traction control settings and the stability control system for a variety of terrain and driving conditions. The system retains the tow/haul settings for up to 4 hours after the vehicle is turned off.



TRAILERING MIRRORS

To further heighten the view of your surroundings, Sierra Heavy Duty offers mirrors with available features such as power-extension, -retraction and -folding capabilities, auxiliary spot lamps, amber clearance lamps, auto-dimming upper glass and perimeter lighting.



MORE VIEWS MEAN MORE CONFIDENCE

In Sierra Heavy Duty, your confidence is enhanced by up to 15 available camera views¹—including the industry-first available transparent trailer view, which helps you virtually see right through a compatible conventional trailer.



UP TO
15 AVAILABLE
**CAMERA
VIEWS¹**

1. TRANSPARENT TRAILER VIEW (REQUIRES COMPATIBLE CONVENTIONAL TRAILER)
2. HITCH VIEW
3. BED VIEW (WITH ZOOM VIEW AND HITCH GUIDANCE)
4. FRONT CAMERA VIEW
5. REAR CAMERA VIEW
6. SURROUND VIEW
7. FRONT TOP-DOWN VIEW
8. REAR TOP-DOWN VIEW
9. BOWL VIEW
10. FRONT SIDE VIEW
11. REAR SIDE VIEW (WITH TRAILER BIASING) (REQUIRES COMPATIBLE CONVENTIONAL TRAILER)
12. REAR TRAILER VIEW (WITH GUIDELINES AND TRAILER ANGLE INDICATOR) (REQUIRES COMPATIBLE CONVENTIONAL TRAILER)
13. INSIDE TRAILER VIEW
14. PICTURE-IN-PICTURE SIDE VIEW
15. REAR CAMERA MIRROR



AVAILABLE TRAILERING TECH

JACK-KNIFE ALERT

Available Jack-Knife Alert tracks the position of a compatible trailer in relation to the vehicle. If the front of the trailer approaches the rear of the vehicle, the system displays an alert that you're in a potential jack-knife situation. Jack-Knife Alert is not compatible with gooseneck or fifth-wheel trailers.

REAR TRAILER VIEW (WITH GUIDELINES AND TRAILER ANGLE INDICATOR)

Rear trailer view features guidelines to assist when backing a trailer into place and a Trailer Angle Indicator to show the relationship between the truck and trailer. Rear trailer view requires the customer-installed available GM auxiliary accessory camera.

Safety or driver-assistance features are no substitute for the driver's responsibility to operate the vehicle in a safe manner. The driver should remain attentive to traffic, surroundings and road conditions at all times. Visibility, weather and road conditions may affect feature performance. Read the vehicle Owner's Manual for more important feature limitations and information.



Not compatible with gooseneck or fifth-wheel trailers.



TRAILER LENGTH INDICATOR

When enabled and driving forward with the turn signal activated, the available Trailer Length Indicator displays as a red overlay twice the length of a compatible conventional trailer to help show when other vehicles are present and may interfere with a lane-change maneuver. Trailer Length Indicator is not compatible with gooseneck or fifth-wheel trailers.

Safety or driver-assistance features are no substitute for the driver's responsibility to operate the vehicle in a safe manner. The driver should remain attentive to traffic, surroundings and road conditions at all times. Visibility, weather and road conditions may affect feature performance. Read the vehicle Owner's Manual for more important feature limitations and information.



SAFE PASSAGE

Sierra Heavy Duty offers a number of available active safety and driver-assistance technologies that help while driving and trailering.

Many of these innovations use a combination of cameras, short- and long-range radars and ultrasonic sensors to help you avoid potential collisions and make you and your companions feel safe, secure and confident.

Due to current supply-chain shortages, certain features shown have limited or late availability, or are no longer available. See the window label or a dealer regarding the features on an individual vehicle.





Due to current supply-chain shortages, certain features shown have limited or late availability, or are no longer available. See the window label or a dealer regarding the features on an individual vehicle.



SIERRA HEAVY DUTY OFFERS:

- Lane Change Alert With Side Blind Zone Alert
- Rear Cross Traffic Alert
- Automatic Emergency Braking
- Safety Alert Seat
- Lane Departure Warning
- Forward Collision Alert
- IntelliBeam—Auto High Beams
- Front and Rear Park Assist (Features Will Not Function on Certain Models Without Dealer Retrofit; See Dealer for Details)
- High Definition Surround Vision
- Rear Camera Mirror and Bed View Camera
- Multicolor 15" Diagonal Head-Up Display
- High Definition Rear Vision Camera
- Trailering-Assistance Technologies: Jack-Knife Alert and Trailer Length Indicator for Compatible Conventional Trailers. Not Compatible With Gooseneck or Fifth-Wheel Trailers.

Safety or driver-assistance features are no substitute for the driver's responsibility to operate the vehicle in a safe manner. The driver should remain attentive to traffic, surroundings and road conditions at all times. Visibility, weather and road conditions may affect feature performance. Read the vehicle Owner's Manual for more important feature limitations and information.



KEEP YOUR CONNECTION STRONG

Enjoy the experience of a seamlessly connected drive.
GMC Connected Services¹ elevates your ownership experience.

SIERRA HEAVY DUTY OFFERS:

- GMC Connected Services¹
- myGMC Mobile App²
- Amazon Alexa Built-in Compatibility³
- Wi-Fi® Hotspot⁴
- In-Vehicle Apps⁵ Such as Spotify^{®6}



STAY IN COMMAND WHEREVER THE ACTION LEADS

- Advanced GMC Infotainment System¹
With Navigation² Is Available
- Bose® Premium Seven-Speaker Audio
System Is Available
- Wireless Apple CarPlay® Compatibility³
Is Available
- Wireless Android Auto Compatibility⁴
Is Available
- Wireless Charging⁵ Is Available



Due to current supply-chain shortages, certain features shown have limited or late availability, or are no longer available. See the window label or a dealer regarding the features on an individual vehicle.



Apple CarPlay® shown.



Android Auto shown.



EXPLORE MORE, ALEXA'S ON BOARD

Alexa functionality is fully integrated into your GMC Infotainment System.¹ With available Amazon Alexa Built-in,² you can ask Alexa to stream your favorite music services such as Spotify³ or Amazon Music, get directions, make calls, change your radio station and get routes to the nearest dealership—on the go. Alexa can also make shopping lists, play and resume audiobooks and get the score to last night's game.



HELP WHEN YOU NEED IT

With available OnStar® Safety and Security, you'll have added peace of mind knowing an Emergency-Certified Advisor¹ is ready to help. Whether it's a crash, a vehicle theft or an emergency situation, help is available 24/7.

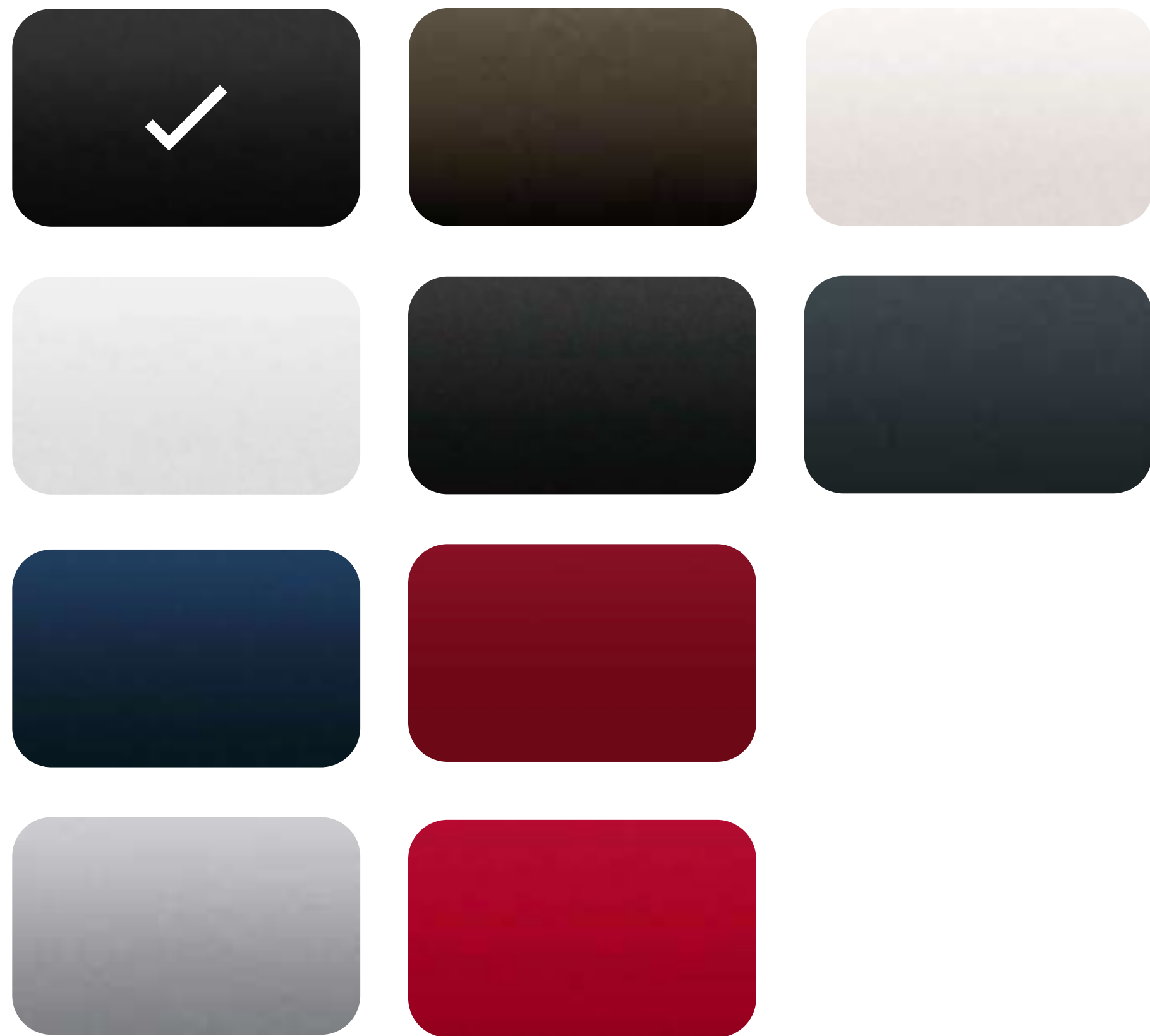
The Safety & Security Plan² includes the OnStar Guardian™ App,³ which lets you bring the key OnStar safety services you depend on into any vehicle. Help in a crash, assistance with a flat tire and more are available through your smartphone. Best of all, you can share OnStar Guardian with up to seven of your loved ones at no additional cost.





FIND YOUR TRUE COLORS

Click the swatches to explore the available vehicle colors.



ONYX BLACK¹

Color available on Pro, SLE, SLT, AT4 and Denali.



SLT shown.

Due to current supply-chain shortages, certain features shown have limited or late availability, or are no longer available. See the window label or a dealer regarding the features on an individual vehicle.

¹Extra-cost color. See your GMC dealer or gmc.com for more exterior color details.



PRO

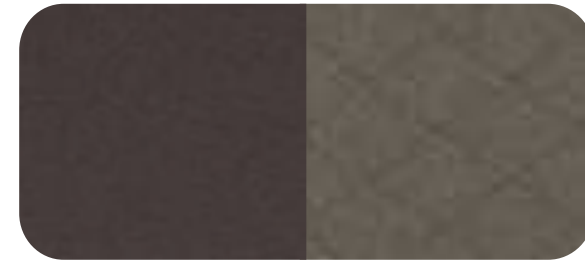


JET BLACK/
JET BLACK CLOTH



JET BLACK/
JET BLACK VINYL

SLE



DARK WALNUT/
SLATE CLOTH



JET BLACK/
JET BLACK CLOTH

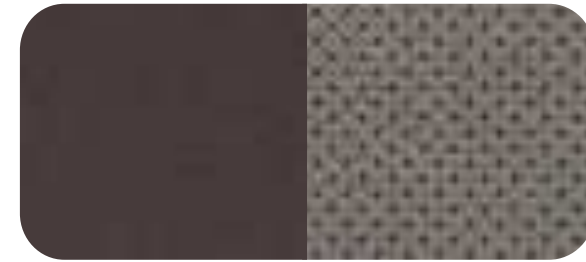


ARENITE TONE



AEGIS PATTERNED ALUMINUM

SLT



DARK WALNUT/
SLATE PERFORATED FRONT
OUTBOARD LEATHER-APPOINTED



JET BLACK/JET BLACK
PERFORATED FRONT
OUTBOARD LEATHER-APPOINTED



CYPRESS WOOD TONE



AEGIS PATTERNED ALUMINUM

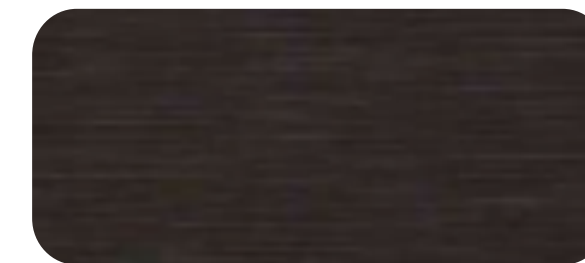
AT4



JET BLACK/JET BLACK PERFORATED
FRONT LEATHER SEATING SURFACES
WITH KALAHARI ACCENTS



TECHNICAL APPEARANCE



DARK BRUSHED ALUMINUM

DENALI



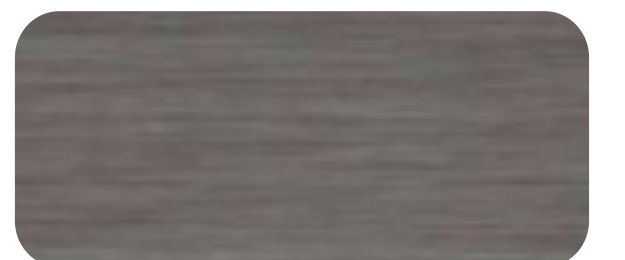
DARK WALNUT/DARK ASH GRAY
FORGE PERFORATED LEATHER
SEATING SURFACES



JET BLACK/JET BLACK FORGE
PERFORATED LEATHER
SEATING SURFACES



ASH WOOD



BRUSHED ALUMINUM



PRECISION-CRAFTED FROM THE GROUND UP

2500 AND 3500 HD SINGLE REAR WHEEL (SRW) MODELS



17"

17" Painted Steel (PYN)
Standard on 2500 HD Pro



17"

17" Machined Aluminum (PYQ)
Standard on 2500 HD SLE;
Available on 2500 HD Pro



18"

18" Painted Steel (PYT)
Standard on 3500 HD Pro;
Available on 2500 HD Pro



18"

**18" 6-Spoke Machined Aluminum
With Dark Gray Metallic Accents (PXD)**
Standard on 3500 HD SLE, 2500/3500
HD SLT and 2500/3500 HD AT4;
Available on 3500 HD Pro and
2500 HD SLE



2500 AND 3500 HD SINGLE REAR WHEEL (SRW) MODELS



20"

20" 6-Spoke Machined Aluminum With Bright Silver Accents (Q7R)
Available on 2500/3500 HD SLE and SLT



20"

20" 6-Spoke Machined Aluminum With High-Gloss Black Accents (PYU)
Available on 2500/3500 HD AT4



20"

20" Multidimensional Polished Aluminum (RQA)
Standard on 2500/3500 HD Denali



20"

20" Multidimensional High-Gloss Black Painted Aluminum (RTJ)
Only Available on 2500/3500 HD Denali Black Diamond Edition



3500 HD DUAL REAR WHEEL (DRW) MODELS



17"

17" Painted Steel (P03)
Standard on 3500 HD Pro



17"

**17" Painted Steel With
Chrome Overlay (P06)**
Standard on 3500 HD SLE and SLT



17"

17" Forged Polished Aluminum (RS7)
Standard on 3500 HD Denali DRW;
Available on 3500 HD Pro Regular Cab
With Max Trailering Package and on
SLT Crew Cab



ACCESSORY WHEELS¹



20"

**20" Chrome
Aluminum (SHL)**

Available on 2500/3500
HD Denali SRW



20"

**20" Multidimensional
Chrome Aluminum (SKW)**

Available on 2500/3500
HD Denali SRW



20"

**20" Black Aluminum
With Machined
Accents (SKX)**

Available on 2500/3500
HD AT4 SRW and
2500/3500 HD
Denali SRW



20"

**20" Machined Aluminum
Bolt Pattern With
High-Gloss Black
Accents (SQ9)**

Available on 2500/3500
HD AT4 SRW and
2500/3500 HD Denali SRW



JUST YOUR STYLE

GMC Accessories are a great way to personalize your Sierra Heavy Duty—inside and out. They're designed and engineered to meet the Professional Grade standards of your Sierra Heavy Duty, as well as your own. We also offer accessories from a lineup of other renowned and proven manufacturers.

Find a full selection of Sierra Heavy Duty accessories at gmc.com/accessories.





PREMIUM ALL-WEATHER FLOOR LINERS IN JET BLACK WITH AT4 LOGO



MOLDED SPLASH GUARDS



HARD TRI-FOLD TONNEAU COVER FOR STANDARD BED



2⁵/₁₆" GOOSENECK TRAILER HITCH BALL ASSEMBLY





POWERED BY PROFESSIONAL GRADE



SIERRA HEAVY DUTY

CANYON

SIERRA 1500 LIMITED

YUKON

TERRAIN

ACADIA

Hunter Metallic color shown on Canyon Denali is limited availability.

Due to current supply-chain shortages, certain features shown have limited or late availability, or are no longer available. See the window label or a dealer regarding the features on an individual vehicle.

DRIVE THE CONVERSATION

#GMCSIERRA HD | #DENALI | #AT4



Share your GMC experience and get in on the action.

Due to current supply-chain shortages, certain features shown on this spread have limited or late availability, or are no longer available. See the window label or a dealer regarding the features on an individual vehicle.





IMPORTANT WORDS AND LEGAL DISCLOSURES



NEW VEHICLE LIMITED WARRANTY

3-YEAR/36,000-MILE BUMPER-TO-BUMPER LIMITED WARRANTY GMC will warrant each 2022 Sierra Heavy Duty from bumper to bumper for 3 years/36,000 miles (whichever comes first; see dealer for details), with no deductible, from the original in-service date of the vehicle, for warrantable repairs that are required as a result of defects due to materials and/or workmanship. Cosmetic corrosion resulting from defects is also covered under the Bumper-to-Bumper Limited Warranty. In addition, rust-through corrosion will be covered for 6 years/100,000 miles (whichever comes first; see dealer for details).

POWERTRAIN LIMITED WARRANTY Every 2022 GMC Sierra Heavy Duty comes with a 5-year/60,000-mile (whichever comes first) transferable Powertrain Limited Warranty. 24/7 Roadside Assistance and Courtesy Transportation are also offered for the duration of the Powertrain Limited Warranty. Sierra 2500 and 3500 Series Heavy Duty (HD) pickups equipped with a 6.6L Duramax Turbo Diesel engine are covered by a 5-year/100,000-mile (whichever comes first) transferable Powertrain Limited Warranty. 24/7 Roadside Assistance and Courtesy Transportation are also offered for the duration of the Powertrain Limited Warranty. Please see your GMC dealer for details.

ONSTAR® AND GMC CONNECTED SERVICES

Connected vehicle services vary by vehicle model and require working electrical system, cell reception and GPS signal. Requires active service plan. OnStar links to emergency services. See onstar.com for details and limitations.

GMC CERTIFIED SERVICE

To help your Sierra Heavy Duty live up to its performance promise, GMC Certified Service—found exclusively at your GMC dealer—is there. With all the engineering excellence in Sierra Heavy Duty, GM-trained technicians have the expertise to help care for it.

ADDITIONAL NOTES

A NOTE ON CHILD SAFETY Always use seat belts and the correct child restraint for your child's age and size, even with airbags. Even in vehicles equipped with the Passenger Sensing System, children are safer when properly secured in a rear seat in the appropriate infant, child or booster seat. Never place a rear-facing infant restraint in the front seat of any vehicle equipped with an active frontal airbag. See the Owner's Manual and the child safety seat instructions for more safety information.

TRAILERING AND OFF-ROAD DRIVING INFORMATION Please go to gmc.com and carefully review the vehicle Owner's Manual for important safety information about trailering or off-road driving in your vehicle.

FLEET ORDERS Some standard content may be deleted on fleet orders. See dealer for details.

ENGINES GMC products are equipped with engines produced by GM Powertrain or other suppliers to GM worldwide. The engines in GMC products may also be used in other GM makes and models.

GMC.COM See more of Sierra Heavy Duty on our website: gmc.com/sierraheavyduty. More photos and information; hot links to related subjects; convenient dealer locator; pricing guide; spec out your own vehicle. Or call 1-800-GMC-8782.

IMPORTANT WORDS ABOUT THIS CATALOG We have tried to make this catalog comprehensive and factual. We reserve the right, however, to make changes at any time, without notice, in prices, colors, materials, equipment, specifications, models and availability. Specifications, dimensions, measurements, ratings and other numbers in this catalog and other printed materials provided at the dealership or affixed to vehicles are approximations based on design and engineering drawings, prototypes and laboratory tests. Your vehicle may differ due to variations in manufacture and equipment. Since some information may have been updated since the time of publication, please check with your GMC dealer for complete details. GMC reserves the right to lengthen or shorten the model year for any product for any reason or to start and end model years at different times. Certain vehicle features may lose their usefulness over time due to obsolescence from technological changes. Unless otherwise noted, all claims based on GM Large Pickup segment and latest available competitive information at time of publication. Excludes other GM vehicles.

AN IMPORTANT NOTE ABOUT ALTERATIONS AND WARRANTIES Installations or alterations to the original equipment vehicle (or chassis) as distributed by General Motors are not covered by the General Motors New Vehicle Limited Warranty. The special body company, assembler, equipment installer or upfitter is solely responsible for warranties on the body or equipment and any alterations (or any effect of the alterations) to any of the parts, components, systems or assemblies installed by GM. General Motors is not responsible for the safety or quality of design, features, materials or workmanship of any alterations by such employers.

ASSEMBLY GMC vehicles and their components are assembled or produced by different operating units of General Motors, its subsidiaries or suppliers to GM worldwide. We sometimes find it necessary to produce GMC vehicles with different or differently sourced components than originally scheduled. Since some options may be unavailable when your vehicle is assembled, we suggest you verify that your vehicle includes the equipment you ordered and that, if there were changes, they are acceptable to you.

GMMOBILITY.COM (1-800-323-9935) GM Mobility offers financial assistance for eligible adaptive equipment to make automotive travel easier for persons with disabilities or special transportation needs. To learn more about special GM Mobility offers, visit gmmobility.com.

©2022 General Motors. All rights reserved. GM, the GM logo, GMC, the slogans, emblems, vehicle model names, vehicle body designs and other marks appearing in this catalog are the trademarks and/or service marks of General Motors, its subsidiaries, affiliates or licensors. Facebook is a registered trademark of Facebook, Inc. Twitter is a registered trademark of Twitter, Inc. Instagram is a registered trademark of Instagram, LLC. Sirius, XM and all related marks and logos are trademarks of SiriusXM Radio, Inc. Google, Android, YouTube, Android Auto and other marks are trademarks of Google LLC. Apple, CarPlay, iPhone and Siri are registered trademarks of Apple, Inc.