

2020
GMC ACADIA



**LIVE
LIKE A PRO**



As a pro, improving on yesterday's accomplishments is what it's all about. Always doing more and doing it better. This uncompromising spirit is why the new Acadia is up to any task. With refined style, up to three rows of versatile configurations and advanced technologies, Acadia is designed to enhance your on-the-go lifestyle.

Experience the SUV as capable as you are—the new 2020 GMC Acadia.



DENALI

ANYWHERE WORTH GOING IS WORTH GOING WELL

- NEW SCULPTED FRONT AND ENHANCED REAR DESIGN
- SIGNATURE DENALI DESIGN, EXCLUSIVE GRILLE AND 20" WHEELS
- LED HEADLAMPS AND TAILLAMPS WITH SIGNATURE C-SHAPE DESIGN
- HANDS-FREE PROGRAMMABLE POWER LIFTGATE WITH GMC LOGO PROJECTION
- ADAPTIVE RIDE CONTROL IS AVAILABLE



GET WELL-ACQUAINTED WITH WELL-APPOINTED

Acadia Denali goes all in with three-row seating, genuine materials—including authentic wood accents and warm-tone burnished aluminum trim—and leather-appointed first- and second-row seats. When it's cold outside, a heated steering wheel and heated front seats can automatically be turned on with remote start. Refinements continue with embroidered Denali front-seat head restraints, ventilated front seats and heated second-row bucket seats accentuated with French seam stitching. You'll also enjoy the convenience of the open center console and its generous storage space.

¹Functionality varies by model. Full functionality requires compatible Bluetooth® and smartphone, and USB connectivity for some devices. ²Map coverage available in the United States, Puerto Rico and Canada. ³Read the vehicle Owner's Manual for important feature limitations and information.



ACADIA DENALI OFFERS AN ARRAY OF PREMIUM MATERIALS AND EQUIPMENT:

- NEW REAL ASH WOOD AND BURNISHED ALUMINUM TRIM
- HEATED AND VENTILATED PERFORATED LEATHER-APPOINTED FRONT SEATS
- 8" DIAGONAL NEXT-GENERATION GMC INFOTAINMENT SYSTEM¹ WITH NAVIGATION² AND BOSE[®] PREMIUM AUDIO SYSTEM
- 6" DIAGONAL COLOR HEAD-UP DISPLAY IS AVAILABLE (LATE AVAILABILITY)
- REAR CAMERA MIRROR³ IS AVAILABLE
- DUAL SKYSCAPE SUNROOF IS AVAILABLE

AT4



GO YOUR OWN WAY: THE FIRST EVER ACADIA AT4



- EXCLUSIVE BLACK CHROME EXTERIOR ACCENTS
- ADVANCED TWIN-CLUTCH AWD SYSTEM
- 3.6L V6 ENGINE WITH 310 HP
- ALL-TERRAIN TIRES WITH 17" GLOSS-BLACK WHEELS
- TRACTION SELECT SYSTEM WITH OFF-ROAD MODE
- HILL START ASSIST AND HILL DESCENT CONTROL

Some of the best routes are the ones you make. That's exactly what the First Ever Acadia AT4 with its advanced twin-clutch AWD system was engineered to help you do. In addition, the Traction Select System allows you to quickly switch among multiple driver modes, including an Off-Road mode, to help improve traction and vehicle control.

AS DISTINCTIVE AS YOUR DESTINATIONS



EXCLUSIVE AT4 INTERIOR OFFERS:

- KALAHARI ACCENTS AND UNIQUE TRIM
- AT4 STITCHING ON FRONT HEAD RESTRAINTS AND AT4-EMBOSSED SILL PLATES
- PREMIUM HEAVY-DUTY FLOOR MATS
- HEATED DRIVER AND FRONT-PASSENGER SEATING
- CARGO MANAGEMENT SYSTEM (STANDARD ON AT4 MODELS WITH TWO-ROW SEATING)
- DUAL SKYSCAPE SUNROOF IS AVAILABLE

Acadia AT4 supports you no matter where your wanderlust takes you. You'll find a unique, athletic interior in cloth or available first- and second-row leather-appointed seats for your active lifestyle. Exclusive trim with Kalahari accents and smart storage compartments await. To accommodate travel companions, choose two-row, 5-person or available three-row, 6- or 7-person seating.





BOLDLY GO ANYWHERE



- LED HEADLAMPS AND TAILLAMPS WITH SIGNATURE C-SHAPE DESIGN
- 18" OR AVAILABLE 20" MACHINED ALUMINUM WHEELS
- NEW 2.0L TURBO OR 3.6L V6 ENGINES ARE AVAILABLE (LATE AVAILABILITY ON THE 2.0L)



- POWER-ADJUSTABLE HEATED MIRRORS WITH INTEGRATED LED TURN SIGNALS
- BRIGHT ROOF RAILS

Celebrate the everyday with Acadia SLT. It delivers everything you want in a midsize SUV: style, versatility, refinement, capability and efficiency. Outside, the front and rear are newly designed and highlighted by LED headlamps, taillamps and an integrated grille.

EQUALLY IMPRESSIVE INSIDE



ACADIA SLT OFFERS PLENTY OF AMENITIES AND STORAGE OPTIONS:

- HEATED LEATHER-APPOINTED FRONT SEATS
- LEATHER-WRAPPED STEERING WHEEL
- KEYLESS OPEN AND START
- FOLD-FLAT SECOND- AND THIRD-ROW SEATS
- APPLE CARPLAY™¹ AND ANDROID AUTO™² COMPATIBILITY
- NEXT-GENERATION 8" DIAGONAL GMC INFOTAINMENT SYSTEM³ WITH AVAILABLE NAVIGATION⁴

¹Vehicle user interface is a product of Apple® and its terms and privacy statements apply. Requires compatible iPhone® and data plan rates apply. Apple CarPlay is a trademark of Apple, Inc. Siri, iPhone and Apple Music are trademarks of Apple, Inc., registered in the U.S. and other countries. ²Vehicle user interface is a product of Google™ and its terms and privacy statements apply. Requires the Android Auto app on Google Play and an Android™-compatible smartphone running Android 5.0 or higher. Data plan rates apply. Android Auto is a trademark of Google LLC. ³Functionality varies by model. Full functionality requires compatible Bluetooth and smartphone, and USB connectivity for some devices. ⁴Map coverage available in the United States, Puerto Rico and Canada.



We've upgraded your accommodations.
You'll enjoy premium materials, convenient
versatility and expanded console storage with
the integration of Electronic Precision Shift.

THREE ROWS. INFINITE OPTIONS.



- THREE ROWS OF SEATING AVAILABLE WITH SMART SLIDE SECOND ROW FOR EASY ACCESS TO THE THIRD ROW
- NEW PASS-THROUGH UNDER-CONSOLE STORAGE AND SIDE-BY-SIDE CUPHOLDERS IN THE FRONT CONSOLE
- TRI-ZONE AUTOMATIC CLIMATE CONTROL WITH THREE-ROW MODELS AND DUAL-ZONE ON TWO-ROW MODELS
- CARGO MANAGEMENT SYSTEM (STANDARD ON AT4 MODELS WITH TWO-ROW SEATING)
- HANDS-FREE PROGRAMMABLE POWER LIFTGATE WITH GMC LOGO PROJECTION IS AVAILABLE

Because your life is full—responsibilities, passions, relationships—Acadia accommodates up to seven in style, comfort and space. Versatility is enabled with second-row Smart Slide seats that provide easy third-row access with just one hand. With the second and third rows folded flat, Acadia gives you 79 cu. ft. of cargo space! When your hands are full, an available hands-free programmable power liftgate is there to help. To find the foot-kick location, simply look for the GMC logo projection.

THE POSSIBILITIES OF POWER



3.6L V6

(SHOWN AT LEFT)

310 HP/271 LB-FT OF TORQUE

STANDARD AT4/DENALI

AVAILABLE SLE/SLT

2.0L TURBO

(LATE AVAILABILITY)

230 HP/258 LB-FT OF TORQUE (GM ESTIMATED)

STANDARD SLE AWD/SLT

2.5L

193 HP/188 LB-FT OF TORQUE

STANDARD SL/SLE FWD

TRACTION SELECT SYSTEM

Acadia's available Traction Select System provides added confidence by allowing you to switch from among up to five specific modes to tailor your ride to differing road conditions and functions such as trailering.

ADAPTIVE RIDE CONTROL

Newly enhanced Adaptive Ride Control, available on Acadia Denali, uses a Continuous Damping Control Suspension system to adjust damping forces every 2 milliseconds—delivering a quiet and comfortable ride.





Safety or driver-assistance features are no substitute for the driver's responsibility to operate the vehicle in a safe manner. The driver should remain attentive to traffic, surroundings and road conditions at all times. Visibility, weather and road conditions may affect feature performance. Read the vehicle Owner's Manual for more important feature limitations and information.

SEE IT, SENSE IT, AVOID IT



STANDARD:

- LANE CHANGE ALERT WITH SIDE BLIND ZONE ALERT
- REAR CROSS TRAFFIC ALERT
- REAR PARK ASSIST
- HIGH DEFINITION REAR VISION CAMERA

AVAILABLE:

- ADAPTIVE CRUISE CONTROL—ADVANCED (DENALI ONLY)
- FORWARD COLLISION ALERT
- AUTOMATIC EMERGENCY BRAKING
- FRONT PEDESTRIAN BRAKING
- FRONT AND REAR PARK ASSIST



Acadia is engineered for road awareness with safety and driver-assistance features that help warn you of potential dangers. Its comprehensive collection of available driver-alert technologies helps you and your companions feel safe and secure. After all, we believe the best way to handle a collision is to avoid it.

Discover more of Acadia's available safety features at gmc.com/acadia/safety.

TECHNOLOGY IS FRONT AND CENTER



- HIGH DEFINITION SURROUND VISION IS AVAILABLE
- 6" DIAGONAL COLOR HEAD-UP DISPLAY IS AVAILABLE (LATE AVAILABILITY)
- REAR CAMERA MIRROR IS AVAILABLE (DENALI ONLY)

Acadia offers available technologies engineered to help keep you aware. High Definition Surround Vision provides a virtual bird's-eye view of Acadia's surroundings. The Head-Up Display projects vehicle data, available active safety information and phone and infotainment sources onto the windshield. And the dual-function Rear Camera Mirror can be used as a conventional rearview mirror or as a camera-based rearview mirror to help you see around potential obstructions, change lanes and check traffic conditions.





ACADIA OFFERS:

- APPLE CARPLAY™ COMPATIBILITY¹ FOR IPHONE® (SHOWN AT LEFT)
- ANDROID AUTO COMPATIBILITY²
- AVAILABLE 4G LTE WI-FI® HOTSPOT³
- AVAILABLE ONSTAR® SAFETY & SECURITY COVERAGE⁴



GMC CONNECTED SERVICES⁵

Your new Acadia offers a host of in-vehicle benefits. Connected Access⁶ offers the latest technology to help you make the most of every drive—and you get standard connectivity for 10 years, giving you access to current features like monthly diagnostic emails and the ability to order and pay for takeout food and purchase fuel through your vehicle's in-dash infotainment system with Marketplace. You can also take your ownership experience to new levels by upgrading to other GMC Connected Services.

myGMC APP⁷

When you download the available myGMC app, you have access to features like scheduling service, getting tips to help improve your driving, instant offers from select nearby merchants and other ways to simplify your ownership experience. When you upgrade to Remote Access,⁸ you can remotely start and stop the engine (if properly equipped), check fuel levels and even set and share notifications for vehicle arrivals and departures with Vehicle Locate.⁹

Discover how to stay connected at gmc.com.



GO FAR, STAY CLOSE



¹Vehicle user interface is a product of Apple® and its terms and privacy statements apply. Requires compatible iPhone® and data plan rates apply. Apple CarPlay is a trademark of Apple, Inc. Siri, iPhone and Apple Music are trademarks of Apple, Inc., registered in the U.S. and other countries. ²Vehicle user interface is a product of Google and its terms and privacy statements apply. Requires the Android Auto app on Google Play and an Android-compatible smartphone running Android 5.0 or higher. Data plan rates apply. Android Auto is a trademark of Google LLC. ³Service varies with conditions and location. Requires active service plan and paid AT&T™ data plan. See onstar.com for details and limitations. ⁴OnStar plan, working electrical system, cell reception and GPS signal required. OnStar links to emergency services. See onstar.com for details and limitations. ⁵Connected services vary by vehicle model and require active service plan, working electrical system, cell reception and GPS signal. Does not include emergency or security services. See onstar.com for details and limitations. ⁶Standard connectivity available only to original purchaser for 10 years. Services enabled by Connected Access are subject to change. Does not include emergency or security services. See onstar.com for details and limitations. ⁷Available on select Apple® and Android devices. Service availability, features and functionality vary by vehicle, device and the plan you are enrolled in. Terms apply. Device data connection required. See onstar.com for details and limitations. ⁸Remote Access Plan does not include emergency or security services. See onstar.com for details and limitations. Lock/unlock feature requires automatic locks. Remote start requires GM factory-installed and enabled remote-start system. U.S., Canada and Mexico only. Requires select paid plan. Service is designed to locate compatible connected vehicles. Eligibility varies by vehicle model. Functionality varies by mobile device. Message and data rates may apply. Requires contact method on file and enrollment to receive alerts. Terms and limitations apply. See onstar.com for details. ⁹Requires select paid plan and compatible smartphone. Locates compatible connected vehicles. Text and data rates apply. Requires contact method on file and enrollment to receive alerts. See onstar.com for details and limitations.

THE QUESTION IS, WHICH ONE?

Choose the Acadia that's right for you at gmc.com/build-and-price.

ACADIA TRIMS



SL/SLE models come with a 2.5L engine on FWD models and a 2.0L Turbo engine (late availability) on SLE AWD models, a 9-speed automatic transmission, LED headlamps and taillamps, cloth seating, the next-generation 8" diagonal infotainment system¹, Smart Slide flat-folding second-row seats, Lane Change Alert with Side Blind Zone Alert², Rear Cross Traffic Alert² and Rear Park Assist² (SLE shown.)



SLT includes most SLE standard content and adds features such as a 2.0L Turbo engine (late availability), perforated leather-appointed first- and second-row seats, LED fog lamps, a hands-free programmable power liftgate with GMC logo projection, an 8-way power-adjustable driver seat, remote start and a Traction Select System.



AT4 includes most SLT standard content and adds a 3.6L V6 engine, cloth or available perforated leather-appointed first- and second-row seats, an advanced twin-clutch AWD system, Hill Descent Control, Hill Start Assist, all-terrain tires, premium heavy-duty floor mats, a Cargo Management System (two-row models) and an Off-Road mode within the Traction Select System.



DENALI includes most SLT standard content and is embellished with premium features such as a 3.6L V6 engine, unique 20" wheels, an automatic heated steering wheel, ventilated front seats, heated second-row outboard seats, Navigation³, Forward Collision Alert², Automatic Emergency Braking² and power-folding mirrors.

¹Functionality varies by model. Full functionality requires compatible Bluetooth[®] and smartphone, and USB connectivity for some devices. ²Read the vehicle Owner's Manual for important feature limitations and information. ³Map coverage available in the United States, Puerto Rico and Canada.



ACADIA SLT IN RED QUARTZ TINTCOAT,
ACADIA DENALI IN CARBON BLACK METALLIC
AND ACADIA AT4 IN SUMMIT WHITE,
ALL SHOWN WITH AVAILABLE EQUIPMENT.

FIND YOUR TRUE COLORS

EXTERIOR

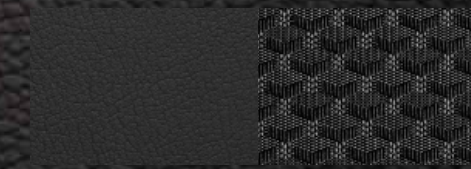


¹Extra-cost color. ²Not available on SL. ³Not available on SLE.

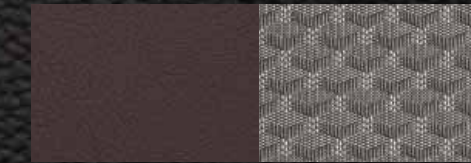
INTERIOR

COLORS

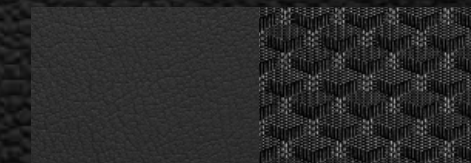
CLOTH



Jet Black/Jet Black — Standard on SL/SLE



Cocoa/Light Ash Gray — Standard on SLE



Jet Black/Jet Black — Standard on AT4

LEATHER APPOINTMENTS



Jet Black/Jet Black Perforated — Standard on SLT



Cocoa/Light Ash Gray Perforated — Standard on SLT



Jet Black/Jet Black Perforated — Available on AT4



Jet Black/Kalahari Perforated — Available on AT4



Jet Black/Jet Black Perforated — Standard on Denali



Dark Galvanized/Light Shale Perforated — Standard on Denali

DETAILS

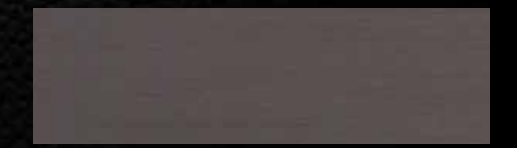
FINISHES



Axiom Aluminum — Standard on SL/SLE/SLT



Combat Aluminum — Standard on AT4



Mortal Aluminum — Standard on AT4



Burnished Aluminum — Standard on Denali

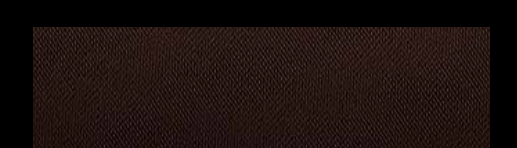
DOOR/CONSOLE ACCENTS



Timberline Wood Tone — Standard on SL/SLE



Luxury Brown Wood Tone — Standard on SLT



Arbiter Appliqué — Standard on AT4



Ash Wood — Standard on Denali

See your GMC dealer or gmc.com for more interior and exterior color details.

DESIGNED FOR DISTINCTION



17" Painted Aluminum (RSC) — Standard on SL



17" Gloss-Black Aluminum (Q7D) — Standard on AT4



18" Machined Aluminum With Dark Accents (5PB) — Standard on SLE



18" Machined Aluminum (RD9) — Standard on SLT



20" Ultra-Bright Machined Aluminum (SHV)¹ — Available on SLT



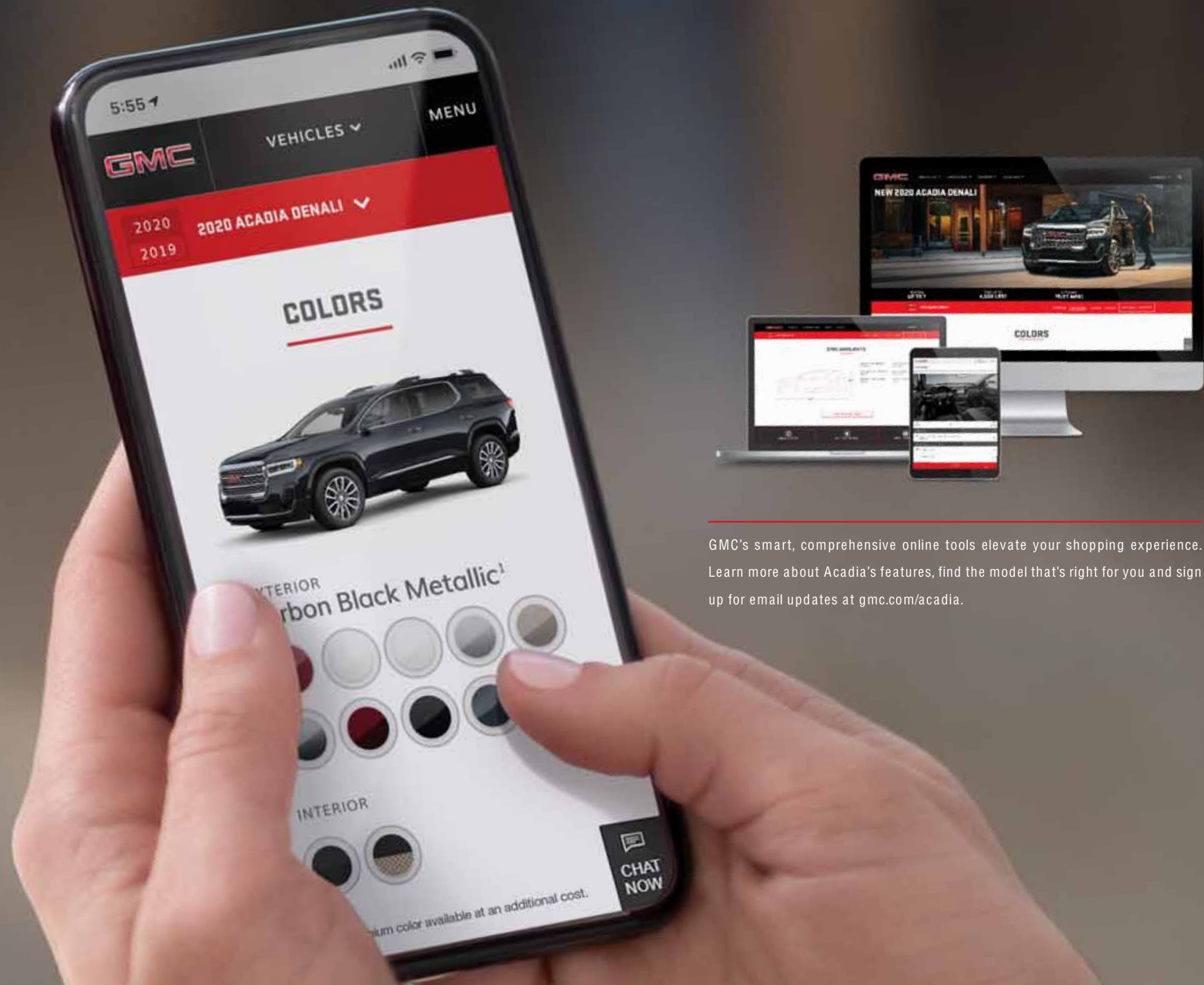
20" Machined Aluminum With Dark Accents (SSZ) — Available on AT4



20" Ultra-Bright Machined Aluminum (SUE) — Standard on Denali

¹Wheel shown throughout available to order through early 2020. Availability may be limited. See dealer for details.

YOUR ACADIA STARTS HERE



GMC's smart, comprehensive online tools elevate your shopping experience. Learn more about Acadia's features, find the model that's right for you and sign up for email updates at gmc.com/acadia.

THE REWARDS OF OWNERSHIP



As rewarding as driving an Acadia is, the rewards start long before getting behind the wheel. With My GMC Rewards,¹ you can earn and redeem points on a wide array of GMC products and services, including the purchase of a new Professional Grade GMC vehicle. To enroll and learn more, visit mygmc.com/rewards or use the myGMC app.² Then once you're behind the wheel, a GMC Certified Service dealer is there to help your Acadia live up to its performance promise. GM-trained technicians build upon their meticulous skill with Vehicle Diagnostics³ and connected technologies to deliver the authentic expertise your GMC deserves.

¹Must be 18 years or older. Points may be earned and redeemed only at participating GM entities, dealers or third-party retailers in the United States (excluding Puerto Rico, the U.S. Virgin Islands or Guam). Points are not earned on taxes or certain fees and expire 5 years from when points are earned. Any unused amount of the voucher will be forfeited. Some restrictions apply. Visit mygmc.com/rewards to view program terms and conditions. ²Available on select Apple® and Android devices. Service availability, features and functionality vary by vehicle, device and the plan you are enrolled in. Terms apply. Device data connection required. See onstar.com for details and limitations. ³Diagnostic capabilities vary by model and plan. Message and data rates may apply. Requires contact method on file and enrollment to receive alerts. Not all issues will deliver alerts. See onstar.com for details and limitations.

DRESS IT UP, TAKE IT EVERYWHERE



GMC Accessories are the only way to fully personalize your entire Acadia—inside and out. They're engineered and tested to meet the Professional Grade standards of your Acadia, as well as your own.

Find a full selection of Acadia accessories at gmc.com/accessories.



PROFESSIONAL GRADE IS OUR DNA



SIERRA HEAVY DUTY



CANYON



SIERRA



YUKON



TERRAIN



ACADIA

DRIVE THE CONVERSATION

NEW VEHICLE LIMITED WARRANTY

3-YEAR/36,000-MILE BUMPER-TO-BUMPER LIMITED WARRANTY GMC will warrant each 2020 Acadia from bumper to bumper for 3 years/36,000 miles (whichever comes first; see dealer for details), with no deductible, from the original in-service date of the vehicle, for warrantable repairs that are required as a result of defects due to materials and/or workmanship. Cosmetic corrosion resulting from defects is also covered under the Bumper-to-Bumper Limited Warranty. In addition, rust-through corrosion will be covered for 6 years/100,000 miles (whichever comes first; see dealer for details).

POWERTRAIN LIMITED WARRANTY Every 2020 GMC Acadia comes with a 5-year/60,000-mile (whichever comes first) transferable Powertrain Limited Warranty. 24/7 Roadside Assistance and Courtesy Transportation are also offered for the duration of the Powertrain Limited Warranty. Please see your GMC dealer for details.

ONSTAR® AND GMC CONNECTED SERVICES

Connected vehicle services require a paid connected vehicle services plan or trial, connected hardware, vehicle electrical system (including battery), wireless service and GPS satellite signal to be available and operating for features to function properly. OnStar acts as a link to existing emergency service providers. Visit onstar.com for coverage map, details and system limitations.

GMC CERTIFIED SERVICE

To help your Acadia live up to its performance promise, GMC Certified Service—found exclusively at your GMC dealer—is there. With all the engineering excellence in Acadia, GM-trained technicians have the expertise to help care for it.

ADDITIONAL NOTES

A NOTE ON CHILD SAFETY Always use seat belts and the correct child restraint for your child's age and size, even with airbags. Even in vehicles equipped with the Passenger Sensing System, children are safer when properly secured in a rear seat in the appropriate infant, child or booster seat. Never place a rear-facing infant restraint in the front seat of any vehicle equipped with an active frontal airbag. See the Owner's Manual and the child safety seat instructions for more safety information.

TRAILERING AND OFF-ROAD DRIVING INFORMATION Please go to gmc.com and carefully review the vehicle Owner's Manual for important safety information about trailering or off-road driving in your vehicle.

FLEET ORDERS Some standard content may be deleted on fleet orders. See dealer for details.

ENGINES GMC products are equipped with engines produced by GM Powertrain or other suppliers to GM worldwide. The engines in GMC products may also be used in other GM makes and models.

GMC.COM See more of Acadia on our website: gmc.com/acadia. More photos and information; hot links to related subjects; convenient dealer locator; pricing guide, spec out your own vehicle. Or call 1-800-GMC-8782.

IMPORTANT WORDS ABOUT THIS CATALOG We have tried to make this catalog comprehensive and factual. We reserve the right, however, to make changes at any time, without notice, in prices, colors, materials, equipment, specifications, models and availability. Specifications, dimensions, measurements, ratings and other numbers in this catalog and other printed materials provided at the dealership or affixed to vehicles are approximations based on design and engineering drawings, prototypes and laboratory tests. Your vehicle may differ due to variations in manufacture and equipment. Since some information may have been updated since the time of printing, please check with your GMC dealer for complete details. GMC reserves the right to lengthen or shorten the model year for any product for any reason or to start and end model years at different times. Certain vehicle features may lose their usefulness over time due to obsolescence from technological changes. Unless otherwise noted, all claims based on GM Mid-SUV segment and latest available competitive information available at the time of printing. Excludes other GM vehicles.

AN IMPORTANT NOTE ABOUT ALTERATIONS AND WARRANTIES Installations or alterations to the original equipment vehicle (or chassis) as distributed by General Motors are not covered by the General Motors New Vehicle Limited Warranty. The special body company, assembler, equipment installer or upfitter is solely responsible for warranties on the body or equipment and any alterations (or any effect of the alterations) to any of the parts, components, systems or assemblies installed by GM. General Motors is not responsible for the safety or quality of design, features, materials or workmanship of any alterations by such employers.

ASSEMBLY GMC vehicles and their components are assembled or produced by different operating units of General Motors, its subsidiaries or suppliers to GM worldwide. We sometimes find it necessary to produce GMC vehicles with different or differently sourced components than originally scheduled. Since some options may be unavailable when your vehicle is assembled, we suggest you verify that your vehicle includes the equipment you ordered and that, if there were changes, they are acceptable to you.

GMMOBILITY.COM (1-800-323-9935) GM Mobility offers financial assistance for eligible adaptive equipment to make automotive travel easier for persons with disabilities or special transportation needs. To learn more about special GM Mobility offers, visit gmmobility.com.

©2019 General Motors. All rights reserved. GM, the GM logo, GMC, the slogans, emblems, vehicle model names, vehicle body designs and other marks appearing in this catalog are the trademarks and/or service marks of General Motors, its subsidiaries, affiliates or licensors. Facebook is a registered trademark of Facebook, Inc. Twitter is a registered trademark of Twitter, Inc. YouTube is a registered trademark of Google LLC. Instagram is a registered trademark of Instagram, LLC. Android Auto is a trademark of Google LLC. Apple, CarPlay, iPhone and Siri are registered trademarks of Apple, Inc.



GMC.COM

LIVE
LIKE A PRO

GMC

WE ARE PROFESSIONAL GRADE