

TERRAIN

2016



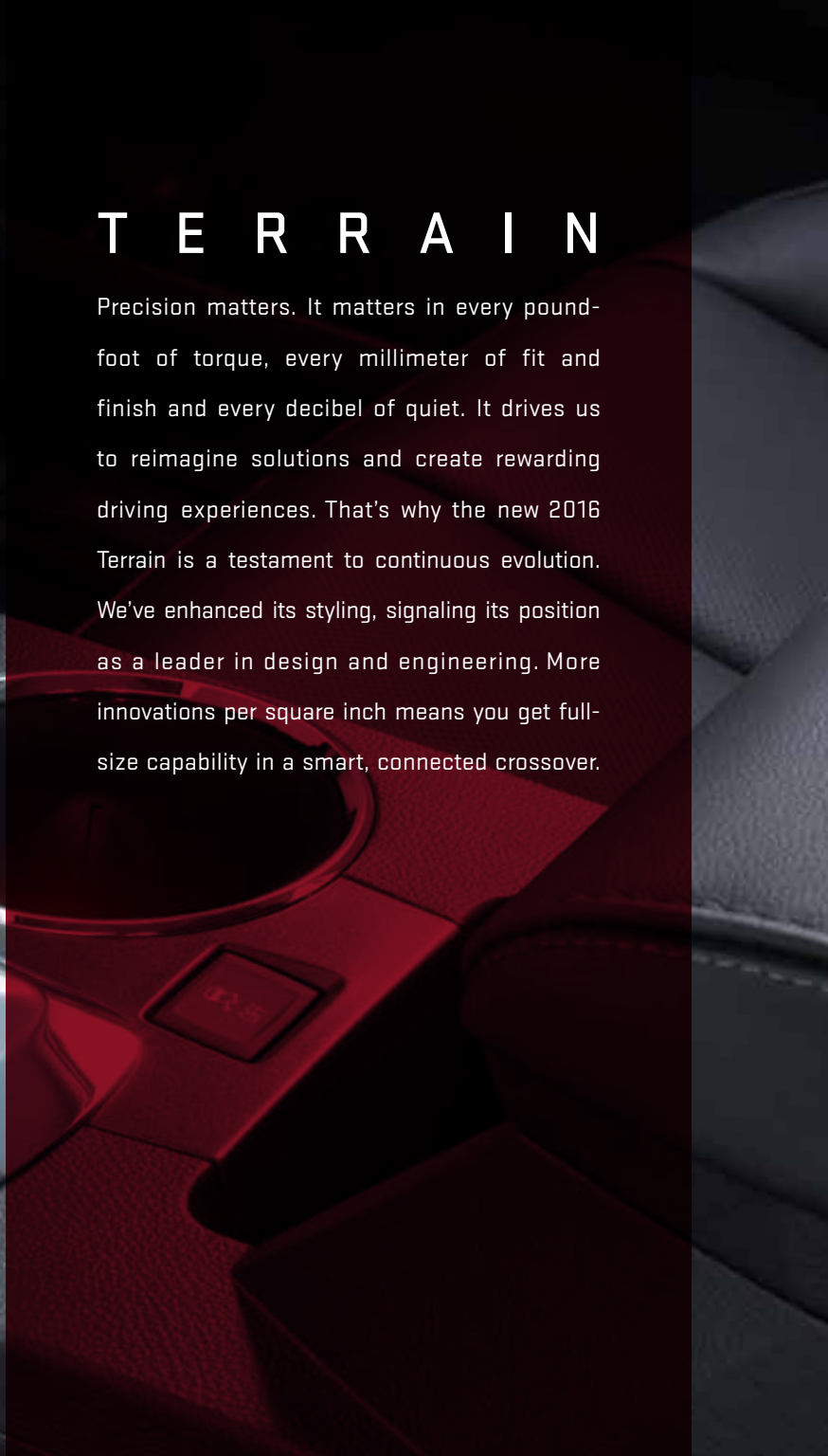
GMC WE ARE PROFESSIONAL GRADE





TERRAIN

Precision matters. It matters in every pound-foot of torque, every millimeter of fit and finish and every decibel of quiet. It drives us to reimagine solutions and create rewarding driving experiences. That's why the new 2016 Terrain is a testament to continuous evolution. We've enhanced its styling, signaling its position as a leader in design and engineering. More innovations per square inch means you get full-size capability in a smart, connected crossover.





EXTERIOR | 2

INTERIOR | 8

PERFORMANCE | 20

SECURITY | 22

SELECTION | 26



SIGNATURE
DENALI GRILLE

NEW EXTERIOR DESIGN

PROJECTOR-BEAM
HEADLAMPS

PROGRAMMABLE
POWER LIFTGATE

TERRAIN DENALI IN EBONY TWILIGHT METALLIC
shown with available equipment.



TERRAIN DENALI: REFINING THE REFINEMENTS.

Looking at the new 2016 Terrain Denali, it's easy to see why it's the ultimate Terrain. With its signature Denali grille and new styling, satin-chrome door handles, mirror caps, bodyside moldings and new Denali-exclusive wheels, it takes the crossover to a new level of premium. After all, at GMC, precision means more than premium refinement—it means precision design, engineering and craftsmanship.

TERRAIN SLT: LOOKING GOOD WAS ONLY A START.

The GMC design philosophy is to create styling that doesn't simply look good, it must also be purposeful. From the angle of the windshield to every line and curve, the whole idea is to disturb less air. That's why Terrain is designed to slice the wind to help create a quiet driving environment. SLT offers additional features that will catch your attention.

DISTINCT SLT GRILLE
AND SLT APPEARANCE
ENHANCEMENTS

TRIPLE DOOR SEALS

STYLISH ARRAY
OF WHEELS

LED DAYTIME
RUNNING LAMPS

TERRAIN SLT IN QUICKSILVER METALLIC
shown with available equipment.



DETAILS. DETAILS. DETAILS.

The proportions of Terrain were crafted with a clear understanding of what you look for in a crossover. This is a design that turns an abundance of bold details into a whole new take on the crossover.



DENALI GRILLE Terrain Denali features a satin-chrome grille with a bright surround, giving it a distinctive appearance.

ALUMINUM WHEELS Terrain Denali models offer two aluminum wheel choices: 18" chrome-clad wheels with the I-4 and 19" ultra-bright machined aluminum wheels with the V-6 engine.

PROJECTOR-BEAM HEADLAMPS Terrain provides bright, focused illumination for confident visibility with integral projector-beam headlamps.

PROGRAMMABLE POWER LIFTGATE Terrain offers a programmable power liftgate. It opens and closes with the touch of a button to the programmed height.



INTEGRATED LED DAYTIME RUNNING LAMPS For daytime illumination, Terrain offers LED daytime running lamps for excellent visibility and durability.

ACOUSTIC LAMINATED GLASS The windshield is engineered with acoustic laminated glass to help keep road noise from entering the cabin.



TRIPLE DOOR SEALS Airtight door seals on all four doors not only baffle unwanted road noise, but also minimize air leaks for a quieter interior.

CHROME BODYSIDE MOLDING Satin-chrome accents, including rocker moldings, accentuate the chiseled, muscular shapes of Terrain Denali.



STYLIZED CHROME EXHAUST TIPS Unique chrome exhaust tips add to Terrain Denali's bold rear profile.

PREMIUM MEASURED IN STITCHES- PER-INCH AND COMFORT-PER-MILE.

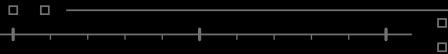
Open the door to Terrain Denali and discover the result of a lot of thinking—about you. To enhance your comfort, convenience and driving experience, GMC designers ensured that style and practicality are equally represented. A generous stitches-per-inch ratio results in a detailed, premium appearance that maintains its shape over time. Denali also means all of your tactile, visual and auditory senses have been elevated. Professional Grade engineering and exacting execution are what we demand of ourselves, because it's what precision demands. Here's proof.

DISTINCTIVE
DENALI SEATING

HEATED FRONT
EIGHT-WAY POWER
SEATS

GENEROUS SECOND-
ROW LEG ROOM

POWER TILT-SLIDING
SUNROOF (AVAILABLE)





TERRAIN DENALI INTERIOR IN JET BLACK
shown with available equipment.



ILLUMINATED CONSOLE
AND INTEGRATED
CONTROL CENTER

REAR VISION
CAMERA SYSTEM

STEERING-WHEEL-
MOUNTED RADIO
CONTROLS

ACOUSTIC NOISE
SUPPRESSION



TUNED TO HEAR WHAT YOU'VE BEEN MISSING.

It's one thing to possess technology that keeps you connected, informed and entertained; it's quite another to be surrounded by an acoustically premium environment, thanks to features such as triple door seals. Options including OnStar 4G LTE Wi-Fi[®] turn Terrain into a mobile hotspot,¹ while the IntelliLink² audio system enables personalized entertainment and an available Navigation System³ provides reliable turn-by-turn guidance. When it comes to solitude, we don't miss a beat, so you never have to. The list of SLT appointments continues at left.

TERRAIN SLT INTERIOR IN LIGHT TITANIUM
shown with available equipment.

¹Devices must be WPA2-compliant with active OnStar service and data plan. Wi-Fi devices manufactured prior to 2006 may not be compatible. Please consult your device manufacturer for information regarding the WPA2 security protocol and Wi-Fi device compatibility. Vehicle must be started or in accessory mode to access Wi-Fi. Visit onstar.com for details and system limitations. ²Full functionality requires compatible Bluetooth[®] and smartphone. Some devices require USB connectivity. ³Map coverage available in the United States, U.S. Virgin Islands, Puerto Rico and Canada.

DRIVING DRIVES EVERYTHING.

From behind the wheel of Terrain you have a direct line of sight to gauges, easy fingertip access to controls and voice command of available entertainment and navigation functions. This allows you to focus on the driving experience.



TERRAIN DENALI INTERIOR IN JET BLACK
shown with available equipment.



VOICE-ACTIVATED
INTELLILINK¹ AND
NAVIGATION² SYSTEM
(AVAILABLE)

COLOR TOUCH
AUDIO SYSTEM

THE CONVENIENCE
OF REMOTE START
(AVAILABLE)

BLUETOOTH³ SMARTPHONE
INTEGRATION

¹Full functionality requires compatible Bluetooth and smartphone. Some devices require USB connectivity. ²Map coverage available in the United States, U.S. Virgin Islands, Puerto Rico and Canada. ³Go to my.gmc.com/learn to find out which phones are compatible with the vehicle.

TAKES THE INTERNET ALONG FOR THE RIDE.

Terrain offers all the technology you need to stay connected, informed and entertained. Terrain offers OnStar 4G LTE capability with an available Wi-Fi hotspot.¹ You can easily connect up to seven devices to the Internet along your travels.



COLOR TOUCH AUDIO SYSTEM A 7" diagonal high-resolution touch-screen makes it easy to find important information quickly. Not only does it include AM/FM/SiriusXM² (with 3-month trial on all models except SL), it also gives you a customizable home page and both USB³ and auxiliary inputs for your MP3 player.

INTELLILINK⁴ Standard on SLE-2, SLT and Denali, IntelliLink provides smartphone integration and voice-activated control of your communication and entertainment selections. This includes making a call, changing the station, streaming Internet radio stations Pandora[®] and Stitcher[™] SmartRadio through your smartphone or accessing your music library.

NAVIGATION SYSTEM⁵ The available NAV system, which includes IntelliLink⁴, adds multiple map views. It also features 3 months of NavTraffic², so you'll get continuously updated traffic information incorporated into the Navigation System.

4G LTE HOTSPOT¹ This available 4G LTE Wi-Fi hotspot means a fast Internet connection for up to seven Web-enabled devices. It's reliably fast and easy to use.

Connected by  4G LTE



REAR VISION CAMERA SYSTEM It displays a real-time image with grid lines in the color touch-screen while in reverse, making it easier and safer when backing up. Shown with available Rear Cross Traffic Alert.

REMOTE VEHICLE START This available feature can start Terrain from up to 200 feet away, so the cabin will begin warming to your preset temperature. SLE-2, SLT and Denali models can begin heating or cooling the interior based on exterior temperature and also turn on heated seats, the rear defroster and outside heated side-view mirrors.



USB CONNECTIVITY³ Plug into the USB port and control most of your MP3 music player's functions with available steering-wheel-mounted radio controls.

PIONEER® PREMIUM SOUND The available Pioneer system allows you to hear your favorite music as the artist intended. With the help of eight strategically placed speakers, this available sound system fills the interior with 250 watts of premium sound.



STEERING-WHEEL-MOUNTED RADIO CONTROLS Change stations, adjust volume or search the audio system with your fingertips.

SIRIUSXM SATELLITE RADIO² Get a 3-month trial subscription to the XM Premier Package on all Terrain models except SL, with 130 channels including commercial-free music, sports, news, talk, comedy and entertainment. With NavTraffic, Travel Link² and the Local Forecast feature, you'll get continuously updated traffic, weather and fuel prices right on your vehicle's available NAV system.

BLUETOOTH FOR PHONE⁵ Keep your eyes on the road by controlling your phone or portable device with your voice. It works through the steering-wheel-mounted controls.

¹Devices must be WPA2-compliant with active OnStar service and data plan. Wi-Fi devices manufactured prior to 2006 may not be compatible. Please consult your device manufacturer for information regarding the WPA2 security protocol and Wi-Fi device compatibility. Vehicle must be started or in accessory mode to access Wi-Fi. Visit onstar.com for details and system limitations. ²If you subscribe after your trial period, *subscriptions are continuous until you call SiriusXM to cancel*. See SiriusXM Customer Agreement for complete terms at siriusxm.com. Other fees and taxes will apply. All fees and programming subject to change. For more information about NavTraffic, visit siriusxm.com/navtraffic. For more information about Travel Link, visit siriusxm.com/travellink. ³Not compatible with all devices. ⁴Full functionality requires compatible Bluetooth and smartphone. Some devices require USB connectivity. Data plan rates apply. ⁵Map coverage available in the United States, U.S. Virgin Islands, Puerto Rico and Canada. ⁶Go to my.gmc.com/learn to find out which phones are compatible with the vehicle.



TERRAIN DENALI INTERIOR IN JET BLACK
shown with available equipment.

PUTS YOU FIRMLY IN CONTROL.

Terrain provides generous space and many ways for you to tailor its comfort and storage to fit your needs and lifestyle.





ILLUMINATED SILL PLATES The two front sill plates are polished aluminum and are another example of Denali's premium materials and finish.

DISTINCTIVE DENALI SEATING Contrasting stitching outlines perforated leather-appointed seating, with an embossed Denali logo on the front seats.

HEATED FRONT SEATS To help warm you up quickly, available front heated seats can be activated when you use the available remote start. Both cushions and seatbacks have heating elements to spread the warmth evenly for added comfort.

AMBIENT LIGHTING The center stack is illuminated with warm, red ambient lighting.

EIGHT-WAY POWER SEAT Standard on Denali and available on SLT, both the driver and front passenger enjoy the comfort of an eight-way power seat with power lumbar.

CONNECTIONS Four 12-volt power ports and a USB port¹ let you charge portable electronics and connect your MP3 player to the audio system.

STORAGE SPACES The interior features an oversized glove box in addition to the center console that's deep enough for a laptop or tablet. There's a new storage shelf under the radio, a smaller compartment under the center armrest and two-tier storage in the door panels.

ACOUSTICS AND NOISE SUPPRESSION The windshield angle, body shape and mirrors are designed to help manage airflow to reduce wind noise. For additional quiet, Terrain is engineered with triple door seals and an acoustic laminated windshield.

LOW LIFT-OVER HEIGHT The load floor is set at a height to make it easy to move large or heavy items in and out, and with the second-row seats folded down, Terrain opens up 63.9 cubic feet of available cargo space.²

LOW STEP-IN HEIGHT While the upper door opening is set high for clearance, the floor is at a lower, car-like height, making it easy for people of all sizes to enter and exit.

¹Not compatible with all devices. ²Cargo and load capacity limited by weight and distribution.

HANDLES CURVES, STRAIGHTAWAYS AND YOUR EXPECTATIONS.

Terrain's chassis and suspension tuning provide nimble maneuvering in and around town. It's the kind of precision you've come to expect. With traction control and available all-wheel drive, even when road and weather conditions turn challenging, you're still comfortably in command. Terrain offers two sources of power. Standard is the 2.4L I-4, and with front-wheel-drive models, it offers 32 hwy mpg,¹ or there's the available 3.6L V-6 that produces the most horsepower in its class, 301 hp with 24 mpg hwy.²

¹EPA-estimated 22 city/32 hwy mpg for Terrain FWD with 2.4L I-4 engine. ²EPA-estimated 17 city/24 hwy mpg for Terrain FWD with 3.6L V-6 engine.



TERRAIN SLT IN QUICKSILVER METALLIC
shown with available equipment.



ENGINE

DIRECT INJECTION (DI) For precise fuel distribution and fast, efficient combustion, both engines feature DI technology. By injecting fuel at more than 2000 psi, the air and fuel mix more completely for crisp throttle response and a lean blend for efficiency at cruise speeds.

VARIABLE VALVE TIMING (VVT) Both engines feature VVT to deliver the power of a high-performance engine with the low-speed response you need for trailering or climbing steep inclines.

ECO-MODE To help optimize efficiency, the 2.4L I-4 engine has an Eco-Mode button that allows the engine to hold gears longer, with only a slight decrease in acceleration.

OIL LIFE MONITOR For long life and durability, the monitor located in the Driver Information Center calculates how much oil life is left, based on when and how you drive.

TRANSMISSION

6-SPEED AUTOMATIC WITH OVERDRIVE For brisk acceleration and reduced highway rpm, this advanced transmission has a wide ratio spread. The gear ratios between first and sixth are appropriately spaced for strong, consistent acceleration at almost any speed.

SUSPENSION

AUTOMATIC GRADE BRAKING To prevent unwanted acceleration and reduce the need for braking during a hill descent, the 6-speed automatic includes this “smart” feature that monitors braking, acceleration, throttle position and even whether a trailer is connected.

RACK-MOUNTED POWER STEERING On 2.4L models, the system delivers assist electronically, eliminating the need for a power-steering pump. It automatically gives you extra steering boost when you need it for parking and tight maneuvers, and less assistance for highway driving.

TRAILER SWAY CONTROL Keep both you and your trailer heading in the proper direction, automatically. The system uses StabiliTrak sensors to detect the rocking of a swaying trailer, then applies the vehicle’s brakes to help bring it back in line.

HILL START BRAKE ASSIST To help prevent your Terrain from rolling back while on a hill or steep incline, it takes over when you lift your foot off the brake. It holds full brake pressure momentarily, giving you time to move your foot to the accelerator.

TRACTION CONTROL To make the most of available traction, the system senses when one or more wheels is starting to spin, such as on a slippery surface, and applies individual brakes and manages engine power to slow the wheel down and maintain traction.

ALL-WHEEL DRIVE (AWD) An intelligent AWD system is available for extra traction and the ability to adapt to changing road conditions.

ADVANCED DUAL-FLOW VALVING This feature in Terrain Denali’s front suspension provides a smoother ride and improved handling across a broad range of driving conditions.

INSTEAD OF WHAT IF, WHAT IF IT DIDN'T HAPPEN?

To help increase your awareness of surrounding traffic, Terrain offers intuitive driver-assist technologies. These include available Forward Collision Alert, Lane Departure Warning and Side Blind Zone and Rear Cross Traffic alerts to help you avoid mishaps. They're constantly on guard, ready to help you through adverse driving conditions.



DRIVER AWARENESS Safety features are no substitute for the driver's responsibility to operate the vehicle in a safe manner. The driver should remain attentive to traffic, surroundings and road conditions at all times. Read the vehicle Owner's Manual for more important safety information.

DUAL-STAGE FRONTAL AIR BAGS¹ To help reduce the risk of injury to the driver and front-seat passenger, Terrain is equipped with two front dual-stage air bags.

HEAD CURTAIN SIDE-IMPACT AIR BAGS¹ These deploy from the roof rail like a protective curtain for outboard passengers and can be activated by either rollover sensors or side-impact sensors.

SIDE-IMPACT AIR BAGS¹ To help protect the thorax and pelvis of the driver and front passenger in a side-impact collision, side-impact air bags are mounted on the driver and front-passenger seats.

REINFORCED STEEL SAFETY CAGE DESIGN A robust body-frame-integral structure is engineered to help maintain the integrity of the passenger compartment in the event of a collision.



STABILITRAK STABILITY CONTROL SYSTEM To help you stay in control when road surfaces are loose, snowy, icy, wet or uneven, StabiliTrak monitors how Terrain is responding to your steering and braking commands.

LATCH CHILD SEAT ANCHORING SYSTEM Lower Anchors and Top tethers for CHildren (or LATCH) enables a child seat top tether strap to be attached to limit movement in a forward crash, helping reduce the chance of injury.



FORWARD COLLISION ALERT AND LANE DEPARTURE WARNING Available Forward Collision Alert provides an audible and visual signal if you are rapidly approaching another vehicle and it appears a collision may be imminent. Available Lane Departure Warning alerts you if you wander from your lane without using your turn signal.



SIDE BLIND ZONE AND REAR CROSS TRAFFIC ALERTS Available radar-equipped sensors monitor side blind spots (shown above), alerting you to help reduce the risk of collisions. While in reverse, the available Rear Cross Traffic Alert monitors your surroundings to provide visual and audible alerts to traffic approaching from outside your field of vision.

TIRE PRESSURE MONITORING SYSTEM² It alerts you to your tires' status and inflation level. If you subscribe to OnStar Vehicle Diagnostics, this information is part of the monthly e-mail. With the available OnStar RemoteLink³ app for your smartphone, you can check this status instantly.

¹Air bag inflation can cause severe injury or death to anyone too close to the air bag when it deploys. Be sure every occupant is properly restrained. See Owner's Manual for more information. Always use safety belts and the correct child restraint for your child's age and size, even with air bags. Even in vehicles equipped with the Passenger Sensing System, children are safer when properly secured in a rear seat in the appropriate infant, child or booster seat. Never place a rear-facing infant restraint in the front seat of any vehicle equipped with an active frontal air bag. See your Owner's Manual and child safety seat instructions for more safety information. ²Does not monitor spare tire. ³Visit onstar.com for coverage map, details and system limitations. Services vary by model and conditions. OnStar acts as a link to existing emergency service providers. Not all vehicles may transmit all crash data. Mobile app available on select iOS, Android,™ BlackBerry® and Windows® devices. Services vary by device, vehicle and conditions. The OnStar Vehicle Locate Service can locate OnStar-equipped vehicles, not people. Requires an active OnStar subscription. OnStar Hands-Free Calling requires an existing OnStar service contract and available minutes. Not available in certain markets. Visit onstar.com for coverage map, details and system limitations. Available 4G LTE Wi-Fi requires compatible mobile device, active OnStar subscription and data plan. Plus tax. Credit card payment required for monthly subscriptions.

PROFESSIONAL GRADE PROTECTION.

Pro Grade Protection is standard on every 2016 Terrain. From maintenance to protecting your entire vehicle, you can drive with confidence.

INCLUDES 2 MAINTENANCE VISITS DURING THE FIRST 2 YEARS/24,000 MILES¹

3-YEAR/36,000-MILE BUMPER-TO-BUMPER LIMITED WARRANTY²

5-YEAR/60,000-MILE POWERTRAIN LIMITED WARRANTY²



WE'RE AS CLOSE AS THE BLUE BUTTON.



Standard for 6 months, the OnStar Guidance Plan³ (trial excludes Hands-Free Calling minutes) lets you connect to a specially trained OnStar Advisor just by pressing the blue OnStar button in your Terrain.

ONSTAR WITH 4G LTE AND BUILT-IN WI-FI[®] HOTSPOT⁴ Now your Terrain has an available built-in Wi-Fi hotspot for connecting up to seven tablets, laptops or mobile devices at 4G LTE speed, so the content you crave is always headed where you are. Requires a data plan after the 3-month trial period (3 months of data or 3GB, whichever comes first).

ONSTAR BASIC PLAN⁵ With the Basic Plan, you've got a powerful connection to your vehicle and the world around you standard for 5 years at no additional cost to you. You'll have access to select services, which include limited features of the OnStar RemoteLink mobile app that lets you remote-start your car (if equipped), pinpoint your vehicle on a map on your smartphone and manage your vehicle's Wi-Fi hotspot (if equipped). Plus, send a destination to your in-vehicle navigation screen and lock or unlock your doors—all from your mobile device. Your vehicle can run diagnostic checks on itself and remind you of servicing needs by e-mail.

AUTOMATIC CRASH RESPONSE In a crash, built-in sensors can automatically alert an OnStar Advisor who is immediately connected into your vehicle to see if you need help—even if you can't ask for it.

EMERGENCY SERVICES One push of the red emergency button gives you a priority connection to a specially trained OnStar Advisor who can direct emergency services to your exact location and offer critical assistance until help arrives. With OnStar, you're never alone.

CRISIS ASSIST During severe weather or other crisis situations, OnStar can provide a quick, central point of contact when you need emergency assistance, navigation help or information.

ROADSIDE ASSISTANCE⁶ If you're stranded, have a flat tire or need a tow truck, just ask an OnStar Advisor to get help to your exact location to get you back on the road quickly.

STOLEN VEHICLE ASSISTANCE⁷ If your vehicle is stolen, OnStar can use GPS to pinpoint and work with authorities to quickly help recover it. On many models, an Advisor can send a signal to slow the vehicle or prevent it from restarting.

TURN-BY-TURN NAVIGATION Getting directions is as easy as pushing a button and telling an Advisor where you want to go. Directions are quickly downloaded to your car, and a voice calls out every turn. An Advisor can also help you with a database of more than 14 million points of interest. To plan routes in advance, you can send directions to your vehicle through Mapquest.com, an Advisor or the RemoteLink mobile app.

ONSTAR WITH 4G LTE CONNECTION³ With powerful 4G LTE connectivity built right into your vehicle, you have your very own mobile command center that provides faster service delivery and lets you stay connected on the go.

ONSTAR REMOTELINK[®] MOBILE APP³ You can remotely start your vehicle, locate your vehicle on a map, lock or unlock your doors, honk your horn and flash your lights. You can also send directions to your vehicle through your smartphone.

REMOTE SERVICES A simple call to an OnStar Advisor can send a signal to unlock your doors or honk the horn and flash the lights. It's technology hard at work to get you back on the road.

HANDS-FREE CALLING³ Your vehicle has built-in Hands-Free Calling to help keep you safely connected when your cell phone isn't available. Choose from minute bundles or a minutes-per-month plan.

ATYOURSERVICE⁹ Life just got easier and more affordable with the personalized connection of AtYourService. Our trusted Advisors can deliver offers for everyday savings from restaurants and retailers on your route, help you locate hotels and even book your room.

ONSTAR VEHICLE DIAGNOSTICS As part of the Basic Plan, every month, your vehicle runs a thorough check of your engine, transmission, antilock brakes and more, and e-mails you the results.

DEALER MAINTENANCE NOTIFICATION Is it time for a tire rotation? An oil change? Or a new air filter? You'll always know because your car can e-mail your Vehicle Diagnostics report to the dealer when it's time, and the dealer will contact you to set up a service appointment.

¹Maintenance visits must occur within 2 years or 24,000 miles of vehicle delivery, whichever comes first. Does not include air filters. See participating dealer for other restrictions and complete details. ²Whichever comes first. See dealer for limited warranty details. ³Visit onstar.com for coverage map, details and system limitations. Services vary by model and conditions. OnStar acts as a link to existing emergency service providers. Not all vehicles may transmit all crash data. Mobile app available on select iOS, Android, BlackBerry and Windows devices. Services vary by device, vehicle and conditions. The OnStar Vehicle Locate Service can locate OnStar-equipped vehicles, not people. Requires an active OnStar subscription. OnStar Hands-Free Calling requires an existing OnStar service contract and available minutes. Not available in certain markets. Visit onstar.com for coverage map, details and system limitations. Available 4G LTE Wi-Fi requires compatible mobile device, active OnStar subscription and data plan. Plus tax. Credit card payment required for monthly subscriptions. ⁴Devices must be WPA2-compliant with active OnStar service and data plan. Wi-Fi devices manufactured prior to 2006 may not be compatible. Please consult your device manufacturer for information regarding the WPA2 security protocol and Wi-Fi device compatibility. Vehicle must be started or in accessory mode to access Wi-Fi. Visit onstar.com for details and system limitations. ⁵The OnStar Basic Plan is available for 5 years from the date of delivery of eligible 2015 model year and newer vehicles and is transferable, including Vehicle Diagnostics, Dealer Maintenance Notification and access to limited OnStar RemoteLink mobile app features. The OnStar Basic Plan does not include emergency, security or navigation services. These and other services are available under a paid plan. Visit onstar.com for vehicle availability, coverage map, details and system limitations. Requires factory-installed remote start. Available 4G LTE Wi-Fi requires compatible mobile device, active OnStar subscription and data plan. Requires factory-equipped vehicle navigation screen. Ability to send a destination to a vehicle's navigation screen through a smartphone is only available on 2016 model year and newer. Currently available to OnStar Guidance Plan subscribers in the U.S. only. ⁶Roadside service provided by Allstate Roadside Services. ⁷Services vary by model and conditions. Visit onstar.com for vehicle availability, details and system limitations. ⁸Third-party trademarks are the property of their respective third-party owners, used under agreement.

ACCENTS



Refined Silver Metallic



Smoked Mahogany Wood Tone

INTERIOR COLORS AND SEATING SURFACES



Jet Black/Light Titanium Premium Cloth¹



Jet Black/Jet Black Premium Cloth

MODELS

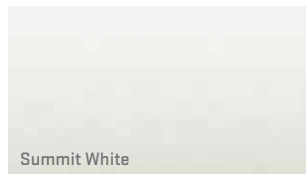
SL	●	—	—	●
SLE	●	—	○	○
SLT	●	—	—	—
DENALI	●	●	—	—

KEY ● STANDARD ○ AVAILABLE — NOT AVAILABLE

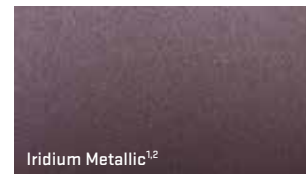
EXTERIOR COLORS



Ebony Twilight Metallic^{1,2}



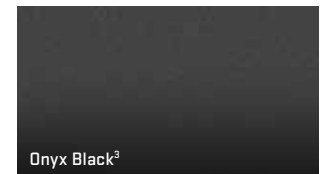
Summit White



Iridium Metallic^{1,2}



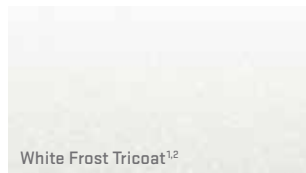
Crimson Red Tintcoat^{1,2}



Onyx Black³



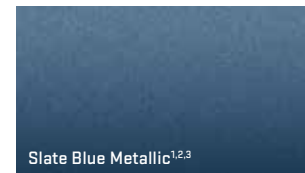
Quicksilver Metallic²



White Frost Tricoat^{1,2}



Dark Sapphire Blue Metallic^{1,2,3}



Slate Blue Metallic^{1,2,3}

All colors are basecoat/clearcoat for high-gloss and durable finish. See dealer for more details.
¹Not available on SL trim. ²Extra-cost color.
³Not available on Denali trim.



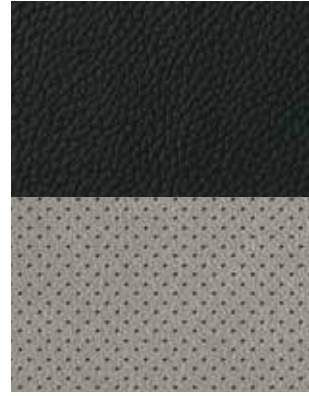
Jet Black/Light Titanium Perforated
Leather-Appointed



Jet Black/Saddle Perforated
Leather-Appointed



Jet Black/Jet Black Perforated
Leather-Appointed



Jet Black/Light Titanium Perforated
Leather-Appointed



Jet Black/Jet Black Perforated
Leather-Appointed

-

-

-

-

-

-

-

-

-

-

○

○

○

-

-

-

-

-

○

○

WHEELS



RTN 17" PAINTED ALUMINUM
STANDARD ON SL, SLE-1 AND SLE-2



REY 18" MACHINED ALUMINUM WITH
PAINTED ACCENTS
STANDARD ON SLT
AVAILABLE ON SLE-2



RBM 19" CHROME-CLAD ALUMINUM
AVAILABLE ON SLT WITH V-6 ENGINE



RV6 18" SATIN-CHROME-CLAD
ALUMINUM
STANDARD ON DENALI WITH I-4 ENGINE



RGB 19" ULTRA-BRIGHT MACHINED
ALUMINUM WITH PAINTED ACCENTS
STANDARD ON DENALI WITH V-6 ENGINE



ROOF RACK CROSS RAIL PACKAGE These cross rails add function and style to the factory roof rack of your Terrain. The cross rails are the base mount for a variety of cargo management accessories.

CARGO SECURITY SHADE Conceal your possessions in the cargo area with this retractable cargo shade.

OUTSIDE REARVIEW MIRROR COVERS Add a stylish look to your Terrain with these chrome mirror covers.

TRAILERING EQUIPMENT PACKAGE This structural welded steel hitch features a standard 1.25" receiver to fit most ball-mount assemblies and includes a wiring harness.

CHROME DOOR HANDLES These outside door handles replace the production handles to give your Terrain a stylish and personalized look.

MOLDED SPLASH GUARDS Custom-molded splash guards fit directly behind the wheels. Rear guards feature the GMC logo.

CHROME FUEL DOOR Help your Terrain stand apart with this distinctive chrome fuel door.

TABLET HOLDER Second-row passengers enjoy the convenience of using tablets on the road with this holder. It securely holds a single tablet against the front seatback in portrait or landscape mode, attaching to the driver- or front-passenger-seat head restraint posts. They're available in Gray or Beige.

PREMIUM ALL-WEATHER FLOOR MATS Their deep-ribbed pattern collects rain, mud, snow and other debris for easy cleaning. Nibs on the back help keep them in place. Available in Jet Black with an embossed GMC logo on front mats only.

CARGO NET It attaches easily to the sides of your cargo area to keep small, light items neat and handy while in transit.

CARGO ORGANIZER This durable, flexible, collapsible cargo organizer has multiple compartments, allowing you to carry lightweight items of various sizes. Can be folded flat or removed from the vehicle as needed.

CARGO AREA CLOSE-OUT PANEL Create a flat, easy-to-load cargo area regardless of the rear-seat position. The panel bridges the gap between the cargo floor and the rear seatback.

PROTECTION PACKAGE (VQG)

- All-weather floor mats
- Custom-molded splash guards

CARGO CONVENIENCE PACKAGE (VQR)

- Cargo organizer
- Cargo security shade
- Cargo net

THE BONUS ROUND.

Available individually or as part of a package, GMC Accessories are the best way to take Terrain's iconic design and add your own personal style. Of course, they're engineered and tested to meet the Professional Grade standards of your Terrain.

TRIM LEVELS

SL
SLE-1
SLE-2
SLT
DENALI

MECHANICAL

ALTERNATORS 120 amps	● ● ● ● ●
155 amps. Included with 3.6L V-6 Variable Valve Timing (VVT) direct-injection engine.	— — ○ ○ ○
BATTERY 525 cold-cranking amps with rundown protection. Included with 2.4L I-4 VVT direct-injection engine.	● ● ● ● ●
615 cold-cranking amps with rundown protection. Included with 3.6L V-6 VVT direct-injection engine.	— — ○ ○ ○
BRAKES 4-wheel antilock, 4-wheel disc	● ● ● ● ●
DRIVETRAINS Front-Wheel Drive (FWD)	● ● ● ● ●
All-Wheel Drive (AWD)	— ○ ○ ○ ○
ENGINES 2.4L I-4 VVT direct injection, 16-valve 4-cylinder; 182 hp, 172 lb-ft of torque	● ● ● ● ●
3.6L V-6 VVT direct injection; 301 hp, 272 lb-ft of torque	— — ○ ○ ○
EXHAUST Single	● ● ● ● ●
Dual with premium tips. Included with 3.6L V-6 VVT direct-injection engine.	— — ○ ○ ○
STABILITRAK Vehicle stability enhancement system. Includes Trailer Sway Control.	● ● ● ● ●
STEERING Power with variable electric assist	● ● ● ● ●
Power with hydraulic assist. Included with 3.6L V-6 VVT direct-injection engine.	— — ○ ○ ○
SOFT RIDE SUSPENSIONS Front independent with strut-type coil springs	● ● ● ● ●
Rear independent trailing arm with 3 lateral locating links, coil springs	● ● ● ● ●
Enhanced ride and handling with dual-flow front dampers	— — — — ●
TRACTION CONTROL	● ● ● ● ●
TRANSMISSION 6-speed automatic	● ● ● ● ●

SEATING

SEATS Premium cloth	● ● ● — —
Ultrasoft perforated leather-appointed	— — — ● —
Ultrasoft perforated leather-appointed with embossed Denali logo on front seats	— — — — —
Front buckets	● ● ● ● ●
60/40 split rear bench, 3-passenger with Multi-Flex manual fore/aft adjustment and recline feature	● ● ● ● ●
Heated driver and front-passenger seats. On SLE-2, requires Convenience Package.	— — ○ ○ ○
Driver 2-way manual fore/aft adjuster, power lumbar and power seat height (up/down)	● ● ● — —
Driver 8-way power seat adjuster and power lumbar	— — ● ● ●
Memory Settings Package for driver seat and outside rearview mirrors. On SLT, includes power passenger seat.	— — — ○ ●
Passenger 8-way power seat adjuster and power lumbar. On SLT, included and only available with Memory Settings Package.	— — — ○ ●

INSTRUMENTATION AND CONTROLS

CRUISE CONTROL	● ● ● ● ●
INSTRUMENTATION Includes speedometer, single trip odometer, fuel level, engine temperature, tachometer and Driver Information Center with compass display. Compass display not included on SL trim.	● ● ● ● ●
REAR VISION CAMERA SYSTEM Integrated into audio system screen. Includes dynamic grid lines.	● ● ● ● ●
STEERING WHEEL Comfort-grip vinyl with integrated audio and cruise controls	● ● — — —
Leather-wrapped with mounted audio and cruise controls	— — ● ● —
Leather-wrapped with smoked mahogany wood tones and mounted audio and cruise controls	— — — ● ●
Tilt and telescopic steering column	● ● ● ● ●
UNIVERSAL HOME REMOTE Includes garage-door opener, programmable. On SLT, requires available power liftgate.	— — — ○ ●

KEY ● STANDARD ○ AVAILABLE — NOT AVAILABLE

TRIM LEVELS

SL
SLE-1
SLE-2
SLT
DENALI

INTERIOR DETAILS

ASSIST HANDLES Front passenger and rear outboard	● ● ● ● ●
AUXILIARY POWER OUTLETS 4 12-volt with covers	● ● ● ● ●
CLIMATE CONTROL Single-zone manual air conditioning with climate control	● ● — — —
Single-zone automatic air conditioning with climate control	— — ● ● ●
CONSOLE Front center with armrest and concealed storage	● ● ● ● ●
CUPHOLDERS 4 front, 4 rear, including 2 in center armrest	● ● ● ● ●
DEFOGGER Rear-window electric	● ● ● ● ●
FLOOR MATS Carpeted front and rear. Rear mats not included on SL trim.	● ● ● ● ●
LIGHTING Theater dimming, center-mounted dome, rear cargo area and dual front map lights	● ● ● ● ●
Ambient lighting on integrated center stack. On SLT and Denali, includes door pulls, cupholders and door storage.	● ● ● ● ●
MIRRORS Inside rearview, auto-dimming	● ● ● ● ●
SILL PLATES Polished aluminum with front illumination	— — — — ●
SUNROOF Power, tilt-sliding with express-open and wind deflector. On SLT, included with Open Road Package.	— — ○ ○ ○
VISORS Driver and front-passenger with illuminated vanity mirrors	● ● ● ● ●
WINDOWS Power with driver and front-passenger express-down	● ● ● ● ●

ENTERTAINMENT/COMMUNICATION/NAVIGATION

COLOR TOUCH AUDIO SYSTEM AM/FM stereo, 7" diagonal touch-screen Color Interface Display, USB port, ¹ MP3 playback capability, Radio Data System (RDS) ² speed-compensated volume, auxiliary input jack and outside temperature display	● ● ● ● ●
COLOR TOUCH NAVIGATION SYSTEM³ WITH INTELLILINK⁴ AM/FM stereo, 7" diagonal touch-screen Color Interface Display, GPS navigation system, USB port, ¹ MP3 playback capability, RDS ² speed-compensated volume, auxiliary input jack and outside temperature display	— — ○ ○ ○
INTELLILINK⁴ Includes Bluetooth ^{®5} streaming audio for music and select phones; hands-free smartphone integration with Pandora [®] and Stitcher [™] SmartRadio integrated radio apps and voice-activated technology for radio and phone. IntelliLink functionality varies by model.	— — ● ● ●
AUDIO 6-speaker system	● ● — — —
Pioneer [®] premium 8-speaker system with subwoofer and amplifier	— — ● ● ●
SIRIUSXM SATELLITE RADIO⁶ Includes 3 trial months of service	— ● ● ● ●
NAVTRAFFIC⁶ Includes 3 trial months of service and only available with Color Touch Navigation ³	— — ○ ○ ○
SIRIUSXM TRAVEL LINK⁶ Includes 3 trial months of service and only included with Color Touch Sound System with IntelliLink ⁴	— — ● ● ●
BLUETOOTH⁵ For phone, personal cell phone connectivity to vehicle audio system and Human Machine Interface	● ● ● ● ●
ONSTAR 4G LTE⁷ 5-year Basic Plan ⁸ and 6-month Guidance Plan ⁹	● ● ● ● ●
OnStar 4G LTE Wi-Fi [®] hotspot ⁷ capability (with 3-month/3GB trial, whichever comes first)	● ● ● ● ●

¹Not compatible with all devices. ²RDS functions only where stations broadcast RDS information. ³Map coverage available in the United States, U.S. Virgin Islands, Puerto Rico and Canada. ⁴Full functionality requires compatible Bluetooth and smartphone. Some devices require USB connectivity. Data plan rates apply. ⁵Go to my.gmc.com/learn to find out which phones are compatible with the vehicle. ⁶If you subscribe after your trial period, subscriptions are continuous until you call SiriusXM to cancel. See SiriusXM Customer Agreement for complete terms and geographic limitations at siriusxm.com. Other fees and taxes will apply. All fees and programming subject to change. For more information about NavTraffic, visit siriusxm.com/navtraffic. For more information about Travel Link, visit siriusxm.com/travellink. XM satellite service is available only in the 48 contiguous United States and Washington, D.C. Sirius, XM and all related marks and logos are trademarks of SiriusXM Radio, Inc. ⁷Devices must be WPA2-compliant with active OnStar service and data plan. Wi-Fi devices manufactured prior to 2006 may not be compatible. Please consult your device manufacturer for information regarding the WPA2 security protocol and Wi-Fi device compatibility. Vehicle must be started or in accessory mode to access Wi-Fi. Visit onstar.com for details and system limitations. ⁸The OnStar Basic Plan is available for 5 years from the date of delivery of eligible 2015 model year and newer vehicles and is transferable, including Vehicle Diagnostics, Dealer Maintenance Notification and access to limited OnStar RemoteLink mobile app features. The OnStar Basic Plan does not include emergency, security or navigation services. These and other services are available under a paid plan. Visit onstar.com for vehicle availability, coverage map, details and system limitations. Requires factory-installed remote start. Available 4G LTE Wi-Fi requires compatible mobile device, active OnStar subscription and data plan. Requires factory-equipped vehicle navigation screen. Ability to send a destination to a vehicle's navigation screen through a smartphone is only available on 2016 model year and newer. Currently available to OnStar Guidance Plan subscribers in the U.S. only. ⁹Visit onstar.com for coverage map, details and system limitations. Services vary by model and conditions. OnStar acts as a link to existing emergency service providers. Not all vehicles may transmit all crash data. Mobile app available on select iOS, Android,™ BlackBerry[®] and Windows[®] devices. Services vary by device, vehicle and conditions. The OnStar Vehicle Locate Service can locate OnStar-equipped vehicles, not people. Requires an active OnStar subscription. OnStar Hands-Free Calling requires an existing OnStar service contract and available minutes. Not available in certain markets. Visit onstar.com for coverage map, details and system limitations. Available 4G LTE Wi-Fi requires compatible mobile device, active OnStar subscription and data plan. Plus tax. Credit card payment required for monthly subscriptions.

TRIM LEVELS

SL
SLE-1
SLE-2
SLT
DENALI

CONVENIENCE FEATURES

REMOTE KEYLESS ENTRY	● ● ● ● ●
REMOTE VEHICLE START Includes extended-range Remote Keyless Entry. On SLE-2, requires Convenience Package.	— — ○ ● ●
CONVENIENCE PACKAGE Includes remote vehicle start and heated driver and front-passenger cloth seats. Included with Chrome Edition.	— — ○ — —
CARGO MANAGEMENT PACKAGE Includes cargo cover, cargo convenience net and luggage crossbars	— — ○ ○ ○

EXTERIOR STYLING AND FUNCTIONALITY

DOOR HANDLES Body-color	● ● ● — —
Bright chrome (satin chrome on Denali). On SLE-2, requires Appearance Package.	— — ○ ● ●
FRONT AND REAR BUMPERS Body-color	● ● ● ● —
Body-color with silver painted rear skid plate	— — — ● ●
GLASS Solar-Ray deep-tinted. All windows except light-tinted glass on windshield and driver and front-passenger side.	● ● ● ● ●
GRILLE Charcoal with chrome surround	● ● ● — —
Charcoal with chrome surround and accents	— — — ● —
Denali-specific with chrome surround	— — — ● ●
LAMPS Halogen projector-beam headlamps	● ● ● ● ●
Daytime running lamps	● ● — — —
Daytime running lamps, LED	— — ● ● ●
LIFTGATE Manual with fixed glass	● ● ● ● —
Power with programmable height control and fixed glass. Includes Universal Home Remote. On SLT, included and only available with Driver Alert Package 1.	— — — ○ ●
LUGGAGE FEATURES Rails, Charcoal	— — ● — —
Rails, chrome inserts (satin-chrome inserts on Denali)	— — — ● ●
Luggage crossbars. Requires Cargo Management Package.	— — ○ ○ ○
OUTSIDE MIRRORS Power-adjustable, manual-folding, black	● — — — —
Heated, power-adjustable, manual-folding, body-color	— ● ● — —
Heated, power-adjustable, manual-folding, chrome. On SLE-2, requires Appearance Package.	— — ○ ● —
Heated, power-adjustable, manual-folding, satin chrome	— — — ● ●
SPARE Tire and wheel	● ● ● ● ●
WIPERS Front and rear intermittent with washers	● ● ● ● ●
CHROME EDITION Includes Appearance Package and Convenience Package	— — ○ — —
APPEARANCE PACKAGE Includes chrome door handles, outside power-adjustable heated, manual-folding chrome mirrors and 18" REY aluminum wheels. Included and only available as part of Chrome Edition.	— — ○ — —
OPEN ROAD PACKAGE Includes Sunroof, Color Touch Navigation ¹ with IntelliLink ² Power Programmable Liftgate, Universal Home Remote and Driver Alert Package 1	— — — ○ —

SAFETY AND SECURITY

AIR BAGS³ Frontal dual-stage with Passenger Sensing System and side-impact, driver and front passenger plus head curtain side-impact with rollover protection, front and rear outboard seating positions	● ● ● ● ●
CHILD SAFETY LOCKS	● ● ● ● ●
LATCH (Lower Anchors and Top tethers for Children) system	● ● ● ● ●
POWER DOOR LOCKS Programmable with lockout protection	● ● ● ● ●
SAFETY BELTS 3-point, all seating positions	● ● ● ● ●
DRIVER ALERT PACKAGE 1 Includes Side Blind Zone Alert, Rear Cross Traffic Alert and Ultrasonic Rear Parking Assist. On SLT, includes power programmable liftgate and Universal Home Remote.	— — ○ ○ ●
DRIVER ALERT PACKAGE 2 Includes Forward Collision Alert and Lane Departure Warning. On SLE-2, requires Driver Alert Package 1.	— — ○ ○ ●
THEFT-DETERRENT SYSTEM Includes PASS-Key III	● ● ● ● ●
TIRE PRESSURE MONITORING SYSTEM Does not monitor spare tire	● ● ● ● ●

KEY ● STANDARD ○ AVAILABLE — NOT AVAILABLE

STANDARD TECHNICAL DATA

FUEL TANK CAPACITY

2.4L I-4 VVT direct injection	18.8 gallons (approx.)
3.6L V-6 VVT direct injection	20.9 gallons (approx.)

EPA-ESTIMATED MILEAGE

2.4L I-4 VVT direct injection	FWD 22 city/32 highway AWD 20 city/29 highway
3.6L V-6 VVT direct injection	FWD 17 city/24 highway AWD 16 city/23 highway

TRAILERING DATA

Maximum Trailer Weight ⁴	1500 lbs, requires 2.4L I-4 VVT direct-injection engine 3500 lbs, requires 3.6L V-6 VVT direct-injection engine
-------------------------------------	--

EXTERIOR DIMENSIONS (IN)

Overall Height	66.3 without luggage rack
Overall Width	72.8
Overall Length	185.5
Wheelbase	112.5

INTERIOR DIMENSIONS

Head Room	Front 39.8/Rear 39.2 in
Leg Room	Front 41.2/Rear (max) 39.9 in
Shoulder Room	Front 55.7/Rear 55.3 in
Hip Room	Front 55.1/Rear 51.3 in
Passenger Volume	99.6 cu. ft.
Interior Volume	130.7 cu. ft.

CARGO AREA DIMENSIONS (CU. FT.)⁵

Behind 1st Row	63.9
Behind 2nd Row	31.6

¹Map coverage available in the United States, U.S. Virgin Islands, Puerto Rico and Canada. ²Full functionality requires compatible Bluetooth and smartphone. Some devices require USB connectivity. Data plan rates apply. ³A NOTE ON CHILD SAFETY: Always use safety belts and the correct child restraint for your child's age and size, even with air bags. Even in vehicles equipped with the Passenger Sensing System, children are safer when properly secured in a rear seat in the appropriate infant, child or booster seat. Never place a rear-facing infant restraint in the front seat of any vehicle equipped with an active frontal air bag. See your vehicle Owner's Manual and child safety seat instructions for more safety information.

⁴Before you buy a vehicle or use it for trailering, carefully review the trailering section of the Owner's Manual. The weight of passengers, cargo and options or accessories may reduce the amount you can tow. ⁵Cargo and load capacity limited by weight and distribution.

IMPORTANT WORDS

PRO GRADE PROTECTION

For 2016, Terrain comes with the Pro Grade Protection Plan, which includes two maintenance visits,¹ 3-year/36,000-mile bumper-to-bumper limited warranty² and 5-year/60,000-mile powertrain limited warranty,² Roadside Assistance and Courtesy Transportation.

Starting with the owner orientation—and full tank of gas—you receive when you take possession of your Terrain to the **24-Hour Roadside Assistance, Courtesy Transportation and Travel Benefits**, you receive a portfolio of owner privileges that lasts throughout your warranty. For expert product information, Roadside Assistance or other services, call 1-800-GMC-8782.

TRAVEL BENEFITS AND ROADSIDE ASSISTANCE Available around the clock: trip routing service, a program for reimbursement for trip interruption due to necessary warranty repairs, towing, flat tire change, jump-starts and more for 5 years or 60,000 miles (whichever comes first).

COURTESY TRANSPORTATION Available at participating dealers: shuttle service, reimbursement of certain public transportation or fuel expenses for overnight warranty repairs and courtesy rental for overnight work repairs. See your dealer for details.

GMC OWNER CENTER A complimentary, one-stop resource to enhance your GMC ownership experience. It's easy to sign up. Just go to gm.com/gmownercenter/gmc.

ONSTAR



Your Terrain includes the OnStar Guidance Plan³ (trial does not include Hands-Free Calling minutes) for 6 months. OnStar services require vehicle electrical system (including battery), wireless service and GPS satellite signals to be available and operating for features to function properly. OnStar service required. OnStar acts as a link to existing emergency service providers. Not all vehicles may transmit all crash data. Visit onstar.com for coverage maps, details and system limitations. Services vary by model and conditions.

SIRIUSXM SATELLITE RADIO



SiriusXM Satellite Radio⁴ is standard on most Terrain models. It includes 3 trial months of service. SiriusXM Satellite Radio makes your drive come alive with commercial-free music channels from virtually every genre, artist-dedicated channels, live performances and more. Tune in to live play-by-play from the biggest sports, exclusive entertainment from top personalities, compelling talk, hilarious comedy, world-class news, local traffic and weather and family-friendly programming. Welcome to the world of satellite radio. Visit siriusxm.com for details.

GMC CERTIFIED SERVICE

GMC Certified Service To help your Terrain live up to its performance promise, GMC Certified Service—found exclusively at your GMC dealer—is there. With all the engineering excellence in Terrain, GM-trained technicians have the expertise to care for all of it.

ADDITIONAL NOTES

A NOTE ON CHILD SAFETY Always use safety belts and the correct child restraint for your child's age and size, even with air bags. Even in vehicles equipped with the Passenger Sensing System, children are safer when properly secured in a rear seat in the appropriate infant, child or booster seat. Never place a rear-facing infant restraint in the front seat of any vehicle equipped with an active frontal air bag. See your vehicle Owner's Manual and child safety seat instructions for more safety information.

TRAILERING AND OFF-ROAD INFORMATION Please carefully review the Owner's Manual for important safety information about trailering or off-road driving in your vehicle.

FLEET ORDERS Some standard content may be deleted with fleet orders. See dealer for details.

ENGINES GMC products are equipped with engines produced by GM Powertrain or other suppliers to GM worldwide. The engines in GMC products may also be used in other GM makes and models.

GMC.COM See more of Terrain on our Web site: gmc.com/terrain. More photos and information; hot links to related subjects; convenient dealer locator; pricing guide, spec out your own vehicle. Or call 1-800-GMC-8782.

BUYPOWER CARD[™] Now it's even easier to get into the GMC of your dreams. Every purchase gives you

Earnings redeemable toward part or even all of a new GMC, Chevrolet, Buick or Cadillac.

Every year, enjoy 5 percent Earnings on your first \$5,000 in purchases and 2 percent

unlimited Earnings after that. No expiration on Earnings and no limit on how much you

can earn or redeem. Learn more at gmcbuypowercard.com/catalogs. YOUR CARD IS THE KEY.[™]



IMPORTANT WORDS ABOUT THIS CATALOG We have tried to make this catalog comprehensive and factual. We reserve the right, however, to make changes at any time, without notice, in prices, colors, materials, equipment, specifications, models and availability. Specifications, dimensions, measurements, ratings and other numbers in this catalog and other printed materials provided at the dealership or affixed to vehicles are approximates based upon design and engineering drawings and prototypes and laboratory tests. Your vehicle may differ due to variations in manufacture and equipment. Since some information may have been updated since the time of printing, please check with your GMC dealer for complete details. GMC reserves the right to lengthen or shorten the model year for any product for any reason, or to start and end model years at different times. All competitive claims are based on the latest information available at the time of printing and GM Compact Utility segment.

AN IMPORTANT NOTE ABOUT ALTERATIONS AND WARRANTIES Installations or alterations to the original equipment vehicle (or chassis) as distributed by General Motors are not covered by the General Motors New-Vehicle Limited Warranty. The special body company, assembler, equipment installer or upfitter is solely responsible for warranties on the body or equipment and any alterations (or any effect of the alterations) to any of the parts, components, systems or assemblies installed by GM. General Motors is not responsible for the safety or quality of design features, materials or workmanship of any alterations by such suppliers.

NEW-VEHICLE LIMITED WARRANTY All GMC light-duty vehicles come with a fully transferable, no-deductible 5-year/60,000-mile (whichever comes first) Powertrain Limited Warranty. GM vehicles registered in the USA are also covered for 3 years or 36,000 miles (whichever comes first). Coverage includes tires and towing to your nearest GMC dealership. Repairs will be made to correct any vehicle defect and most warranty repairs will be made at no charge. In addition, rust-through corrosion will be covered for 6 years or 100,000 miles (whichever comes first). Terrain also comes with two maintenance visits within the first 2 years/24,000 miles (whichever comes first).¹ See dealer for details.

ASSEMBLY GMC vehicles and their components are assembled or produced by different operating units of General Motors, its subsidiaries or suppliers to GM worldwide. We sometimes find it necessary to produce GMC vehicles with different or differently sourced components than originally scheduled. Since some options may be unavailable when your vehicle is assembled, we suggest that you verify that your vehicle includes the equipment you ordered or, if there are changes, that they are acceptable to you.

GMMOBILITY.COM (1-800-323-9935) GM Mobility offers financial assistance for eligible adaptive equipment to make automotive travel easier for persons with disabilities or special transportation needs. To learn more about special GM Mobility offers, visit gmmobility.com.

¹Maintenance visits must occur within 2 years or 24,000 miles of vehicle delivery, whichever comes first. Does not include air filters. See participating dealer for other restrictions and complete details. ²Whichever comes first. See dealer for limited warranty details. ³Visit onstar.com for coverage map, details and system limitations. Services vary by model and conditions. OnStar acts as a link to existing emergency service providers. Not all vehicles may transmit all crash data. Mobile app available on select iOS, Android,[™] BlackBerry[®] and Windows[®] devices. Services vary by device, vehicle and conditions. The OnStar Vehicle Locate Service can locate OnStar-equipped vehicles, not people. Requires an active OnStar subscription. OnStar Hands-Free Calling requires an existing OnStar service contract and available minutes. Not available in certain markets. Visit onstar.com for coverage map, details and system limitations. Available 4G LTE Wi-Fi requires compatible mobile device, active OnStar subscription and data plan. Plus tax. Credit card payment required for monthly subscriptions. ⁴If you subscribe after your trial period, *subscriptions are continuous until you call SiriusXM to cancel*. See SiriusXM Customer Agreement for complete terms at siriusxm.com. Other fees and taxes will apply. All fees and programming subject to change. For more information about NavTraffic, visit siriusxm.com/navtraffic. XM satellite service is available only to those in the 48 contiguous USA and D.C.

©2015 General Motors. All rights reserved. GM, the GM logo, GMC, the slogans, emblems, vehicle model names, vehicle body designs and other marks appearing in this catalog are the trademarks and/or service marks of General Motors, its subsidiaries, affiliates or licensors. Facebook is a registered trademark of Facebook, Inc. Twitter is a registered trademark of Twitter, Inc. YouTube is a registered trademark of Google, Inc. Sirius, XM and all related marks and logos are trademarks of SiriusXM Radio, Inc.



FACEBOOK.COM/GMC



TWITTER.COM/THISISGMC



YOUTUBE.COM/GMC

VISIT US AT GMC.COM

