

2022 GMC

TERRAIN



GMC

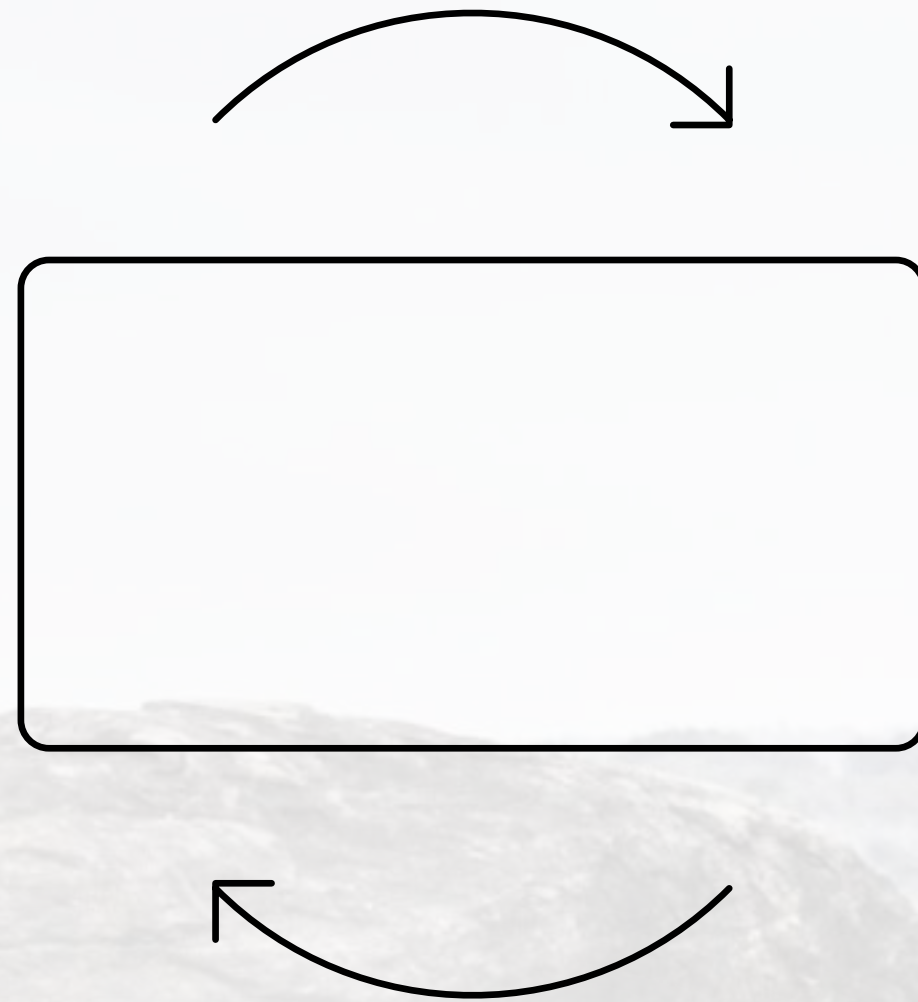
NAVIGATION GUIDE

3

CLICK THE HOME BUTTON TO RETURN TO THE TABLE OF CONTENTS.



1



ROTATE FOR A BETTER VIEWING EXPERIENCE.

— GMC Connected Services¹

2

CLICK ON UNDERLINED TEXT TO REVEAL IMPORTANT LEGAL INFORMATION.

4

CLICK THE X TO CLOSE DISCLAIMERS.

¹Connected services vary by vehicle model and require active service plan, working electrical system, cell reception and GPS signal. Does not include emergency or security services. See onstar.com for details and limitations.



TERRAIN CONTENTS

CLICK ANY TITLE TO EXPLORE A SPECIFIC CHAPTER.

3

INTRODUCTION

17

ELEVATION EDITION

25

VERSATILITY

33

WHEELS

6

AT4

20

GMC PRO SAFETY

27

CONNECTIVITY

34

ACCESSORIES

10

DENALI

22

TECHNOLOGY

31

EXTERIOR COLORS

38

IMPORTANT WORDS
AND LEGAL DISCLOSURES

15

SLE AND SLT

23

CAPABILITY

32

INTERIOR COLORS
AND TEXTURES



MEET THE 2022 GMC TERRAIN

Impressive on every level, the Terrain compact SUV is perfectly equipped for the way you live—and the places you're heading.





BUILT TO TAKE ON LIFE'S BIG ADVENTURES

The 2022 Terrain is made for getting the most from today. Stylish updates such as the redesigned front end and taillamps help Terrain stand out everywhere you go.



WHEREVER LIFE LEADS, THERE'S A TERRAIN TO TAKE YOU THERE



SLT shown.

Terrain SLE and SLT stand out from the crowd with striking design and turbocharged capability.



The First Ever Terrain AT4 is confidently capable and ready to get you into the heart of the action.



Terrain Denali is premium in every way. It is the embodiment of Terrain's true potential.



EMBRACE YOUR SPIRIT OF ADVENTURE IN TERRAIN AT4



AT4

Take on the day in the rugged and ready, boldly styled Terrain AT4.



HIT THE TRAILS

Go beyond with capability features such as:

- Goodyear® Sport Terrain Tires
- Front Steel Skid Plate
- Traction Select System With Off-Road Mode
- Hill Descent Control





INTUITIVE TECHNOLOGY

Stay connected and informed even off the beaten path thanks to these technology features:

- Wireless Apple CarPlay® [Compatibility](#)¹
- Wireless Android Auto™ [Compatibility](#)²
- Amazon Alexa [Built-In](#)³ Is Available
- New Head-Up Display Is Available
- High Definition Surround [Vision](#)⁴ Is Available





Stand out anywhere the action takes you with distinctive design features such as:

- AT4 Grille and Badging
- LED Headlamps and Taillamps
- AT4-Embroidered Front Head Restraints
- Heated Steering Wheel
- Unique 17" Gloss-Black Painted Wheels
- Leather-Appointed Front-Row Seats With Unique Accents
- Leather-Appointed Second-Row Outboard Seats
- Heated Front Seats¹ Are Available



RISE ABOVE WITH TERRAIN DENALI

Signature Denali style and performance take Terrain to the next level, exceeding even the highest expectations.





LET THEM KNOW YOU'VE TRULY ARRIVED

- Denali-Exclusive Multidimensional Grille
- LED Headlamps With GMC Signature C-Shape Design
- 19" Machined Aluminum Wheels With Premium Gray Painted Accents
- Ultra-Bright Roof Rails
- Chrome Accents



DENALI

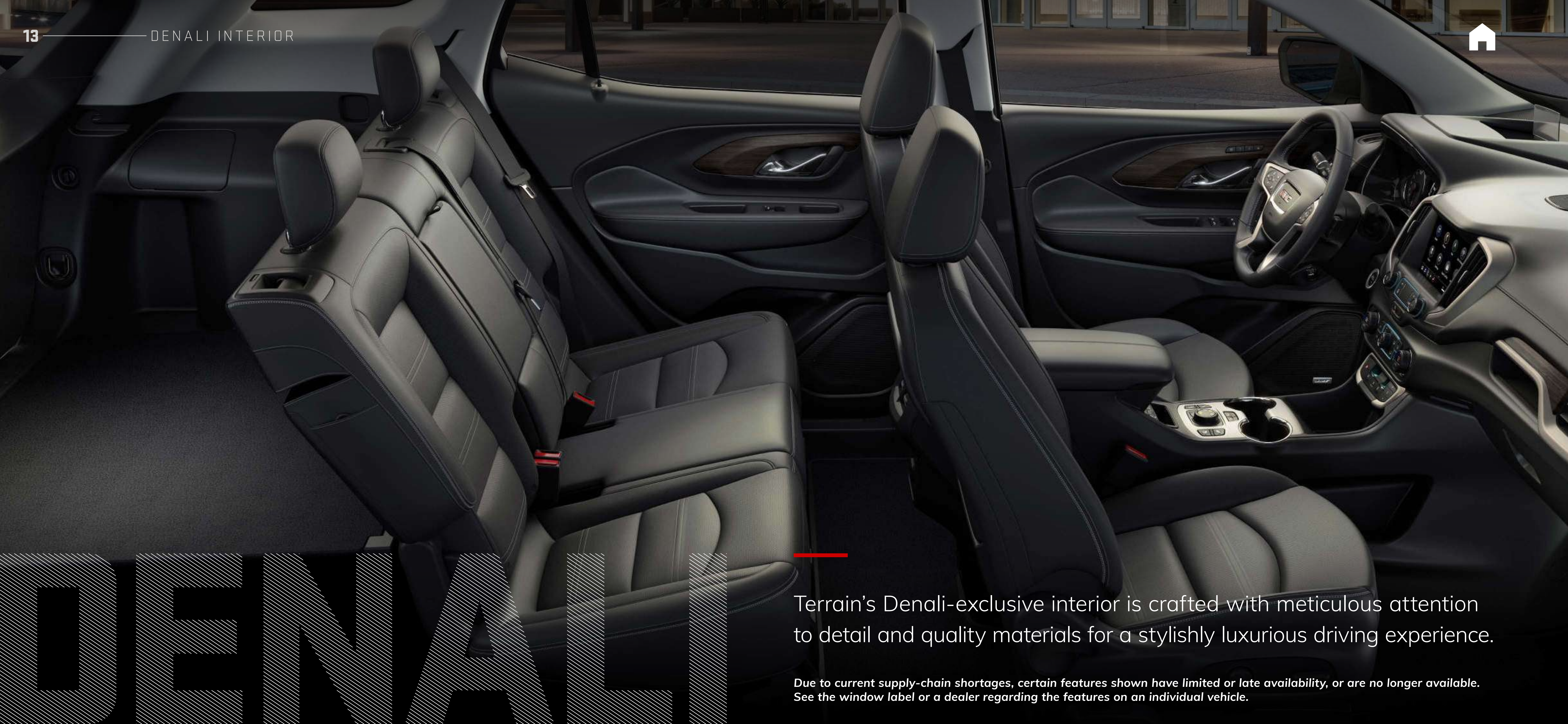


EXCEPTIONAL TECH

Get the most from every drive with features such as:

- GMC Pro Safety Plus¹
- New Head-Up Display
- New 8" Diagonal Driver Information Center
- Wireless Charging²





Terrain's Denali-exclusive interior is crafted with meticulous attention to detail and quality materials for a stylishly luxurious driving experience.

Due to current supply-chain shortages, certain features shown have limited or late availability, or are no longer available. See the window label or a dealer regarding the features on an individual vehicle.



SETTLE IN, BUT NEVER SETTLE



Due to current supply-chain shortages, certain features shown have limited or late availability, or are no longer available. See the window label or a dealer regarding the features on an individual vehicle.

DENALI

TERRAIN DENALI OFFERS:

- Heated Leather-Wrapped Steering Wheel
- Authentic Aluminum Trim
- Soft-Touch Instrument Panel
- Bose® Premium Seven-Speaker Audio System
- Heated Front Seats¹ Are Available
- Ventilated Leather-Appointed Front Seats¹ Are Available
- Heated Second-Row Outboard Seats¹ Are Available



TERRAIN SLE AND SLT

Capability, premium appointments and eye-catching good looks come together in perfect harmony.





REIMAGINE WHAT A COMPACT SUV HAS TO OFFER



Next-level driver comfort and available intuitive tech provide an elevated driving experience.

TERRAIN SLE AND SLT

- GMC Pro Safety¹
- Traction Select System
- Fold-Flat Seats
- Wireless Apple CarPlay® Compatibility²
- Wireless Android Auto Compatibility³
- GMC Pro Safety Plus⁴ Is Available
- Heated Front Seats⁵ and Heated Steering Wheel Are Available
- High Definition Rear Vision Camera⁶ Is Available



TERRAIN ELEVATION EDITION

Set yourself apart with Terrain Elevation Edition's arresting presence that announces something truly unique has arrived.

Late availability.





STRIKING DETAILS

ELEVATION EDITION AVAILABLE ON TERRAIN SLE AND TERRAIN SLT

- 19" Gloss-Black Painted Aluminum Wheels
- Darkened Front Grille
- Black Roof Side Rails
- Black GMC Center Caps With Red GMC Lettering
- Black Exterior Accents
- Black Mirror Caps and Black Exterior Badging





GET THERE WITH CONFIDENCE

Terrain is engineered with advanced standard safety and driver-assistance features and available technologies to help you travel more confidently.





GMC PRO SAFETY

ENHANCE YOUR AWARENESS WITH COLLISION-AVOIDANCE AND DRIVER-ASSISTANCE TECHNOLOGIES:

- Automatic Emergency Braking
- Forward Collision Alert
- Lane Keep Assist With Lane Departure Warning
- Following Distance Indicator
- Front Pedestrian Braking
- IntelliBeam—Auto High Beams

Safety or driver-assistance features are no substitute for the driver's responsibility to operate the vehicle in a safe manner. The driver should remain attentive to traffic, surroundings and road conditions at all times. Visibility, weather and road conditions may affect feature performance. Read the vehicle Owner's Manual for more important feature limitations and information.

Discover more of Terrain's safety technologies at gmc.com/terrain/safety.





GMC PRO SAFETY PLUS

INCLUDES ALL GMC PRO SAFETY FEATURES PLUS:

- Lane Change Alert With Side Blind Zone Alert
- Rear Cross Traffic Alert
- Rear Park Assist

GMC Pro Safety Plus is standard on Denali and available on SLE, SLT and AT4.

Safety or driver-assistance features are no substitute for the driver's responsibility to operate the vehicle in a safe manner. The driver should remain attentive to traffic, surroundings and road conditions at all times. Visibility, weather and road conditions may affect feature performance. Read the vehicle Owner's Manual for more important feature limitations and information.

Discover more of Terrain's safety technologies at gmc.com/terrain/safety.





STAY CONNECTED WITH WHERE YOU'RE HEADED NEXT



Terrain keeps you and your companions connected, informed and entertained. With these standard and available technologies, your favorite tunes, podcasts and more travel with you.

- [Bluetooth](#)^{®1} Connectivity
- Head-Up Display Is Available
- Amazon Alexa [Built-In](#)² Is Available
- Connected [Navigation](#)³ With Real-Time Updates on Traffic, Road Closures and Points of Interest Is Available
- Wi-Fi[®] [Hotspot](#)⁴ Is Available
- Up to Six USB [Ports](#)⁵ Are Available



MAKE EVERY ROAD A ROAD WELL-TRAVELED

Transfer the power to the pavement with a smooth-shifting 9-speed automatic transmission. Terrain also offers a Traction Select System, allowing you to make real-time adjustments to changing driving conditions. FWD models include Snow mode, which lessens the chance of wheel slippage in low-traction driving conditions.

AWD models, standard on Terrain AT4 and Denali, offer Off-Road mode as well as an AWD Disconnect mode engineered to optimize fuel economy¹ in everyday driving conditions. Experience Terrain Denali's refined ride with reduced noise over rough roads thanks to the Premium Suspension with Enhanced Shock Control.



Due to current supply-chain shortages, certain features shown have limited or late availability, or are no longer available. See the window label or a dealer regarding the features on an individual vehicle.



HIGHLY CAPABLE

1.5L TURBO

170 HP/203 LB-FT OF TORQUE

HILL DESCENT CONTROL

PROVIDES A SMOOTH,
CONTROLLED DESCENT
OVER UNEVEN SURFACES

TRACTION SELECT SYSTEM

WITH UP TO THREE MODES TO
HELP MASTER THE CONDITIONS





ROOM FOR YOUR LIFE

To help you access all of its space, Terrain offers an available hands-free programmable power liftgate with LED logo projection.





Terrain comfortably accommodates up to five people and easily allows you to maximize cargo space.

- Fold-Flat Front-Passenger Seat
- 60/40 Split-Folding Second-Row Seats

— Fold-Flat Seats Accommodate Objects up to 8 Feet Long¹



READY FOR THE ROAD AHEAD

Enjoy the experience of a seamlessly connected drive.
GMC Connected Services¹ elevates your ownership experience.

TERRAIN OFFERS:

- GMC Connected Services¹
- myGMC Mobile App²
- Amazon Alexa Built-In³
- Wi-Fi® Hotspot⁴
- In-Vehicle Apps⁵ Such as Spotify^{®6}



STAY IN COMMAND WHEREVER THE ACTION LEADS

- Wireless Apple CarPlay® Compatibility¹
- Wireless Android Auto Compatibility²
- GMC Infotainment System³ With Navigation⁴ Is Available
- Bose Premium Seven-Speaker Audio System Is Available
- Wireless Charging⁵ Is Available



Due to current supply-chain shortages, certain features shown have limited or late availability, or are no longer available. See the window label or a dealer regarding the features on an individual vehicle.



EXPLORE MORE, ALEXA'S ON BOARD

Alexa functionality is fully integrated into your GMC Infotainment System.¹ With available Amazon Alexa Built-In,² you can ask Alexa to stream your favorite music services such as Spotify³ or Amazon Music, get directions, make calls, change your radio station and get routes to the nearest dealership—on the go. Alexa can also make shopping lists, play and resume audiobooks and get the score to last night's game.

HELP WHEN YOU NEED IT

With available OnStar® Safety and Security, you'll have added peace of mind knowing an Emergency-Certified Advisor¹ is ready to help. Whether it's a crash, a vehicle theft or an emergency situation, help is available 24/7.

The Safety & Security Plan² includes the OnStar Guardian™ App,³ which lets you bring the key OnStar safety services you depend on into any vehicle. Help in a crash, assistance with a flat tire and more are available through your smartphone. Best of all, you can share OnStar Guardian with up to seven of your loved ones at no additional cost.





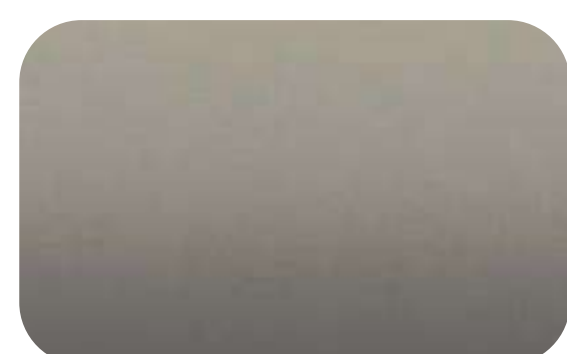
FIND YOUR TRUE COLORS



SUMMIT
WHITE



WHITE FROST
TRICOAT^{1,2}



DESERT SAND
METALLIC^{1,3}



QUICKSILVER
METALLIC¹



CAYENNE RED
TINTCOAT¹



HUNTER
METALLIC^{1,4}



EBONY TWILIGHT
METALLIC¹



MARINE
METALLIC^{1,5}



See your GMC dealer or [gmc.com](https://www.gmc.com) for more exterior color details.

Denali shown in Hunter Metallic.



SLE



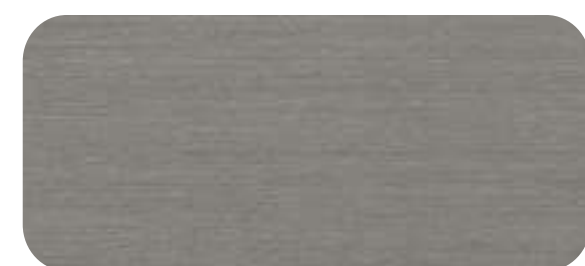
JET BLACK/MEDIUM
ASH GRAY CLOTH



JET BLACK/
JET BLACK CLOTH

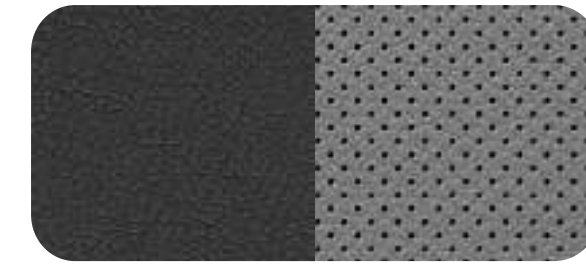


LUXURY BROWN
WOOD TONE



AXIOM ALUMINUM

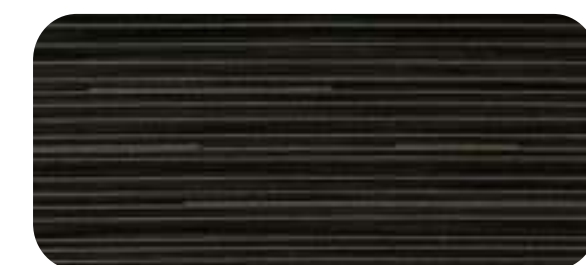
SLT



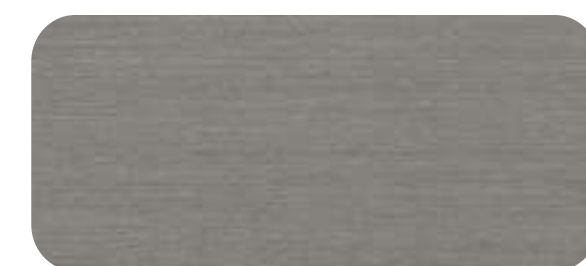
JET BLACK/MEDIUM
ASH GRAY PERFORATED
LEATHER-APPOINTED



JET BLACK/
JET BLACK PERFORATED
LEATHER-APPOINTED



LUXURY BROWN
WOOD TONE



AXIOM ALUMINUM

AT4



JET BLACK/JET BLACK
PERFORATED LEATHER-APPOINTED



AXINITE APPLIQUÉ

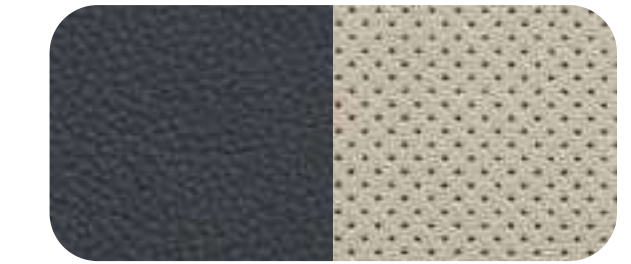


COMBAT ALUMINUM



DARK ALUMINUM

DENALI



DARK GALVANIZED/
LIGHT PLATINUM PERFORATED
LEATHER-APPOINTED



JET BLACK/
JET BLACK PERFORATED
LEATHER-APPOINTED



SKYLINE TIMBER
WOOD TONE



BURNISHED ALUMINUM



PRECISION-CRAFTED FROM THE GROUND UP



17"

**17" SILVER
PAINTED ALUMINUM (RSB)**
Standard on SLE



17"

**17" GLOSS-BLACK
PAINTED ALUMINUM (PJE)**
Standard on AT4



18"

**18" SILVER PAINTED
ALUMINUM (RSX)**
Standard on SLT



19"

**19" GLOSS-BLACK
PAINTED ALUMINUM (PJM)**
Standard on Elevation Edition



19"

**19" MACHINED ALUMINUM
WITH GRAY PAINTED
ACCENTS (PJH)**
Available on SLT



19"

**19" MACHINED ALUMINUM
WITH PREMIUM GRAY
PAINTED ACCENTS (RT7)**
Standard on Denali



PERSONALIZE YOUR TERRAIN—INSIDE AND OUT

GMC Accessories are a great way to personalize your Terrain—inside and out. They're designed and engineered to meet the Professional Grade standards of your Terrain, as well as your own.

We also offer accessories from a lineup of other renowned and proven manufacturers.

Find a full selection of Terrain accessories at gmc.com/accessories.





**VERTICAL CARGO NET
WITH STORAGE BAG**



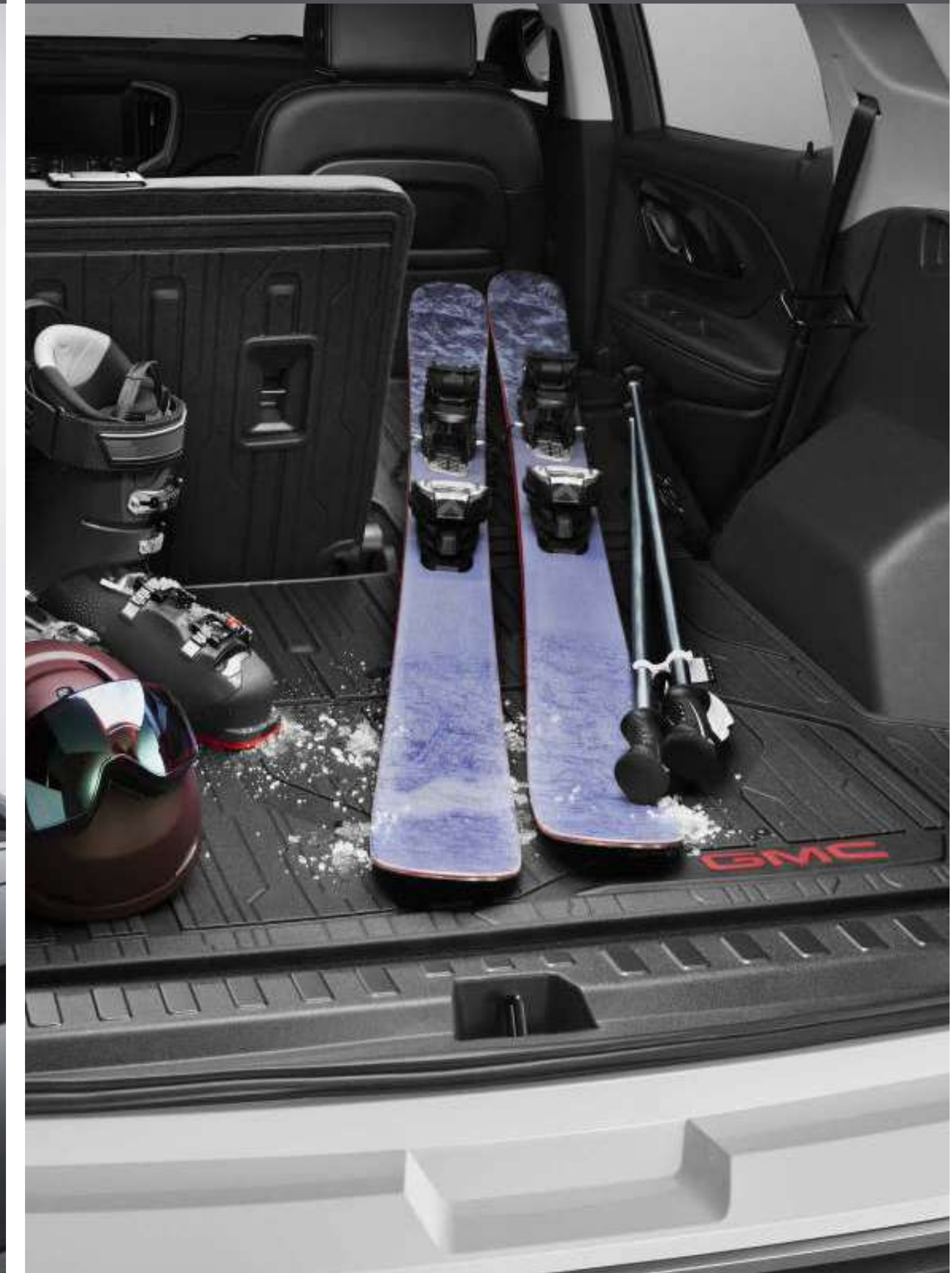
**FIRST-ROW PREMIUM
ALL-WEATHER FLOOR LINERS**



**ROOF RACK CROSSRAILS
WITH THULE® BIKE CARRIER**



INTEGRATED CARGO AREA LINER



Find a full selection of Terrain accessories at gmc.com/accessories.



POWERED BY PROFESSIONAL GRADE



SIERRA HEAVY DUTY

CANYON

SIERRA 1500 LIMITED

YUKON

TERRAIN

ACADIA

Hunter Metallic color shown on Canyon Denali is limited availability.

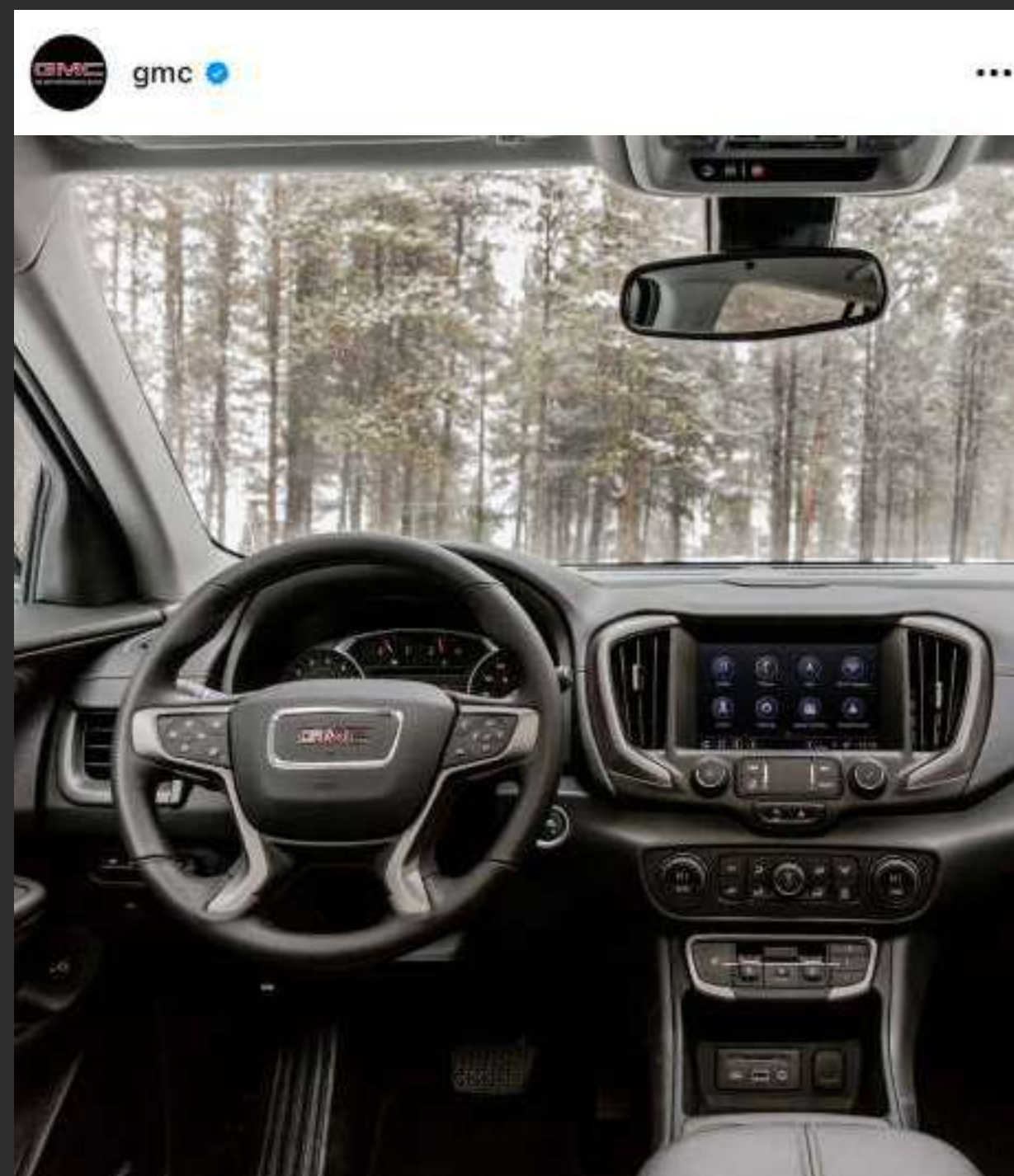
Due to current supply-chain shortages, certain features shown have limited or late availability, or are no longer available. See the window label or a dealer regarding the features on an individual vehicle.

DRIVE THE CONVERSATION

#GMCTERRAIN | #DENALI | #AT4



Share your GMC experience and get in on the action.



Due to current supply-chain shortages, certain features shown have limited or late availability, or are no longer available. See the window label or a dealer regarding the features on an individual vehicle.





IMPORTANT WORDS AND LEGAL DISCLOSURES



NEW VEHICLE LIMITED WARRANTY

3-YEAR/36,000-MILE BUMPER-TO-BUMPER LIMITED WARRANTY GMC will warrant each 2022 Terrain from bumper to bumper for 3 years/36,000 miles (whichever comes first; see dealer for details), with no deductible, from the original in-service date of the vehicle, for warrantable repairs that are required as a result of defects due to materials and/or workmanship. Cosmetic corrosion resulting from defects is also covered under the Bumper-to-Bumper Limited Warranty. In addition, rust-through corrosion will be covered for 6 years/100,000 miles (whichever comes first; see dealer for details).

POWERTRAIN LIMITED WARRANTY Every 2022 GMC Terrain comes with a 5-year/60,000-mile (whichever comes first) transferable Powertrain Limited Warranty. 24/7 Roadside Assistance and Courtesy Transportation are also offered for the duration of the Powertrain Limited Warranty. Please see your GMC dealer for details.

ONSTAR® AND GMC CONNECTED SERVICES

Connected vehicle services vary by vehicle model and require working electrical system, cell reception and GPS signal. Requires active service plan. OnStar links to emergency services. See onstar.com for details and limitations.

GMC CERTIFIED SERVICE

To help your Terrain live up to its performance promise, GMC Certified Service—found exclusively at your GMC dealer—is there. With all the engineering excellence in Terrain, GM-trained technicians have the expertise to help care for it.

ADDITIONAL NOTES

A NOTE ON CHILD SAFETY Always use seat belts and the correct child restraint for your child's age and size, even with airbags. Even in vehicles equipped with the Passenger Sensing System, children are safer when properly secured in a rear seat in the appropriate infant, child or booster seat. Never place a rear-facing infant restraint in the front seat of any vehicle equipped with an active frontal airbag. See the Owner's Manual and the child safety seat instructions for more safety information.

TRAILERING AND OFF-ROAD DRIVING INFORMATION Please go to gmc.com and carefully review the vehicle Owner's Manual for important safety information about trailering or off-road driving in your vehicle.

FLEET ORDERS Some standard content may be deleted on fleet orders. See dealer for details.

ENGINES GMC products are equipped with engines produced by GM Powertrain or other suppliers to GM worldwide. The engines in GMC products may also be used in other GM makes and models.

GMC.COM See more of Terrain on our website: gmc.com/terrain. More photos and information; hot links to related subjects; convenient dealer locator; pricing guide; spec out your own vehicle. Or call 1-800-GMC-8782.

IMPORTANT WORDS ABOUT THIS CATALOG We have tried to make this catalog comprehensive and factual. We reserve the right, however, to make changes at any time, without notice, in prices, colors, materials, equipment, specifications, models and availability. Specifications, dimensions, measurements, ratings and other numbers in this catalog and other printed materials provided at the dealership or affixed to vehicles are approximations based on design and engineering drawings, prototypes and laboratory tests. Your vehicle may differ due to variations in manufacture and equipment. Since some information may have been updated since the time of publication, please check with your GMC dealer for complete details. GMC reserves the right to lengthen or shorten the model year for any product for any reason or to start and end model years at different times. Certain vehicle features may lose their usefulness over time due to obsolescence from technological changes. Unless otherwise noted, all claims based on GM Compact SUV segment and latest available competitive information available at time of publication. Excludes other GM vehicles.

AN IMPORTANT NOTE ABOUT ALTERATIONS AND WARRANTIES Installations or alterations to the original equipment vehicle (or chassis) as distributed by General Motors are not covered by the General Motors New Vehicle Limited Warranty. The special body company, assembler, equipment installer or upfitter is solely responsible for warranties on the body or equipment and any alterations (or any effect of the alterations) to any of the parts, components, systems or assemblies installed by GM. General Motors is not responsible for the safety or quality of design, features, materials or workmanship of any alterations by such employers.

ASSEMBLY GMC vehicles and their components are assembled or produced by different operating units of General Motors, its subsidiaries or suppliers to GM worldwide. We sometimes find it necessary to produce GMC vehicles with different or differently sourced components than originally scheduled. Since some options may be unavailable when your vehicle is assembled, we suggest you verify that your vehicle includes the equipment you ordered and that, if there were changes, they are acceptable to you.

GMMOBILITY.COM (1-800-323-9935) GM Mobility offers financial assistance for eligible adaptive equipment to make automotive travel easier for persons with disabilities or special transportation needs. To learn more about special GM Mobility offers, visit gmmobility.com.

©2022 General Motors. All rights reserved. GM, the GM logo, GMC, the slogans, emblems, vehicle model names, vehicle body designs and other marks appearing in this catalog are the trademarks and/or service marks of General Motors, its subsidiaries, affiliates or licensors. Facebook is a registered trademark of Facebook, Inc. Twitter is a registered trademark of Twitter, Inc. Instagram is a registered trademark of Instagram, LLC. Sirius, XM and all related marks and logos are trademarks of SiriusXM Radio, Inc. Google, Android, YouTube, Android Auto and other marks are trademarks of Google LLC. Apple, CarPlay, iPhone and Siri are registered trademarks of Apple, Inc.



INTUITIVE TECHNOLOGY

Stay connected and informed even off the beaten path thanks to these technology features:

- Wireless Apple CarPlay® [Compatibility](#)¹
- Wireless Android Auto™ [Compatibility](#)²
- Amazon Alexa [Built-In](#)³ Is Available
- New Head-Up Display Is Available
- High Definition Surround [Vision](#)⁴ Is Available



¹Vehicle user interface is a product of Apple® and its terms and privacy statements apply. Requires compatible iPhone® and data plan rates apply. Apple CarPlay, Siri, iPhone and Apple Music are trademarks of Apple, Inc., registered in the U.S. and other countries. ²Vehicle user interface is a product of Google and its terms and privacy statements apply. Requires the Android Auto app on Google Play and a compatible Android smartphone. Data plan rates apply. You can check which smartphones are compatible at g.co/androidauto/requirements. Android, Google Play and Android Auto are trademarks of Google LLC. ³Functionality is subject to limitations and varies by vehicle, infotainment system and location. Select service plan required. Certain Alexa Skills require account linking to use. Amazon, Alexa and all related marks are trademarks of Amazon.com, Inc., or its affiliates. See onstar.com for additional details. ⁴Safety or driver-assistance features are no substitute for the driver's responsibility to operate the vehicle in a safe manner. Read the vehicle Owner's Manual for important feature limitations and information.





Stand out anywhere the action takes you with distinctive design features such as:

- AT4 Grille and Badging
- LED Headlamps and Taillamps
- AT4-Embroidered Front Head Restraints
- Heated Steering Wheel
- Unique 17" Gloss-Black Painted Wheels
- Leather-Appointed Front-Row Seats With Unique Accents
- Leather-Appointed Second-Row Outboard Seats
- Heated Front Seats¹ Are Available

¹Feature will not function on certain models without dealer retrofit. See dealer for details.





EXCEPTIONAL TECH

Get the most from every drive with features such as:

- GMC Pro Safety Plus¹
- New Head-Up Display
- New 8" Diagonal Driver Information Center
- Wireless Charging²



¹GMC Pro Safety Plus: Automatic Emergency Braking, Lane Keep Assist with Lane Departure Warning, Forward Collision Alert, Front Pedestrian Braking, Following Distance Indicator, IntelliBeam, Lane Change Alert with Side Blind Zone Alert, Rear Cross Traffic Alert and Rear Park Assist. Safety or driver-assistance features are no substitute for the driver's responsibility to operate the vehicle in a safe manner. Read the vehicle Owner's Manual for important feature limitations and information. ²The system wirelessly charges one compatible mobile device. Some phones have built-in wireless charging technology and others require a special adapter/back cover. To check for phone or other device compatibility, see my.gmc.com/learn or consult your carrier.





SETTLE IN, BUT NEVER SETTLE



¹Feature will not function on certain models without dealer retrofit. See dealer for details. ✖

Due to current supply-chain shortages, certain features shown have limited or late availability, or are no longer available. See the window label or a dealer regarding the features on an individual vehicle.

DENALI

TERRAIN DENALI OFFERS:

- Heated Leather-Wrapped Steering Wheel
- Authentic Aluminum Trim
- Soft-Touch Instrument Panel
- Bose® Premium Seven-Speaker Audio System

- Heated Front Seats¹ Are Available
- Ventilated Leather-Appointed Front Seats¹ Are Available
- Heated Second-Row Outboard Seats¹ Are Available



REIMAGINE WHAT A COMPACT SUV HAS TO OFFER



Next-level driver comfort and available intuitive tech provide an elevated driving experience.

TERRAIN SLE AND SLT

- GMC Pro Safety¹
- Traction Select System
- Fold-Flat Seats
- Wireless Apple CarPlay® Compatibility²
- Wireless Android Auto Compatibility³
- GMC Pro Safety Plus⁴ Is Available
- Heated Front Seats⁵ and Heated Steering Wheel Are Available
- High Definition Rear Vision Camera⁶ Is Available

¹GMC Pro Safety: Automatic Emergency Braking, Lane Keep Assist with Lane Departure Warning, Forward Collision Alert, Front Pedestrian Braking, Following Distance Indicator and IntelliBeam. Safety or driver-assistance features are no substitute for the driver's responsibility to operate the vehicle in a safe manner. Read the vehicle Owner's Manual for important feature limitations and information. ²Vehicle user interface is a product of Apple® and its terms and privacy statements apply. Requires compatible iPhone® and data plan rates apply. Apple CarPlay, Siri, iPhone and Apple Music are trademarks of Apple, Inc., registered in the U.S. and other countries. ³Vehicle user interface is a product of Google and its terms and privacy statements apply. Requires the Android Auto app on Google Play and a compatible Android smartphone. Data plan rates apply. You can check which smartphones are compatible at g.co/androidauto/requirements. Android, Google Play and Android Auto are trademarks of Google LLC. ⁴GMC Pro Safety Plus: Automatic Emergency Braking, Lane Keep Assist with Lane Departure Warning, Forward Collision Alert, Front Pedestrian Braking, Following Distance Indicator, IntelliBeam, Lane Change Alert with Side Blind Zone Alert, Rear Cross Traffic Alert and Rear Park Assist. Safety or driver-assistance features are no substitute for the driver's responsibility to operate the vehicle in a safe manner. Read the vehicle Owner's Manual for important feature limitations and information. ⁵Feature will not function on certain models without dealer retrofit. See dealer for details. ⁶Safety or driver-assistance features are no substitute for the driver's responsibility to operate the vehicle in a safe manner. Read the vehicle Owner's Manual for important feature limitations and information.



STAY CONNECTED WITH WHERE YOU'RE HEADED NEXT



Terrain keeps you and your companions connected, informed and entertained. With these standard and available technologies, your favorite tunes, podcasts and more travel with you.

- Bluetooth^{®1} Connectivity
- Head-Up Display Is Available
- Amazon Alexa Built-In² Is Available
- Connected Navigation³ With Real-Time Updates on Traffic, Road Closures and Points of Interest Is Available
- Wi-Fi[®] Hotspot⁴ Is Available
- Up to Six USB Ports⁵ Are Available

¹Go to my.gmc.com/learnabout/bluetooth to find out which phones are compatible with the vehicle. Full Bluetooth feature functionality varies by device, model and software version. ²Functionality is subject to limitations and varies by vehicle, infotainment system and location. Select service plan required. Certain Alexa Skills require account linking to use. Amazon, Alexa and all related marks are trademarks of Amazon.com, Inc., or its affiliates. See onstar.com for additional details. ³Connected Navigation and real-time Points of Interest (POI) only available on properly equipped vehicles. Requires paid plan or trial. Map coverage available in the U.S., Puerto Rico and Canada. See onstar.com for details and limitations. ⁴Service varies with conditions and location. Requires active service plan and paid AT&T[®] data plan. See onstar.com for details and limitations. ⁵Not compatible with all devices.





MAKE EVERY ROAD A ROAD WELL-TRAVELED

Transfer the power to the pavement with a smooth-shifting 9-speed automatic transmission. Terrain also offers a Traction Select System, allowing you to make real-time adjustments to changing driving conditions. FWD models include Snow mode, which lessens the chance of wheel slippage in low-traction driving conditions.

AWD models, standard on Terrain AT4 and Denali, offer Off-Road mode as well as an AWD Disconnect mode engineered to optimize fuel economy¹ in everyday driving conditions. Experience Terrain Denali's refined ride with reduced noise over rough roads thanks to the Premium Suspension with Enhanced Shock Control.



Due to current supply-chain shortages, certain features shown have limited or late availability, or are no longer available. See the window label or a dealer regarding the features on an individual vehicle.

¹EPA-estimated 25 city/30 hwy mpg (FWD); 25 city/28 hwy (AWD).





Terrain comfortably accommodates up to five people and easily allows you to maximize cargo space.

- Fold-Flat Front-Passenger Seat
- 60/40 Split-Folding Second-Row Seats

— Fold-Flat Seats Accommodate Objects up to 8 Feet Long¹

¹Cargo and load capacity limited by weight and distribution.





READY FOR THE ROAD AHEAD

Enjoy the experience of a seamlessly connected drive.
GMC Connected Services¹ elevates your ownership experience.

TERRAIN OFFERS:

- GMC Connected Services¹
- myGMC Mobile App²
- Amazon Alexa Built-In³
- Wi-Fi® Hotspot⁴
- In-Vehicle Apps⁵ Such as Spotify⁶



¹Connected services vary by vehicle model and require active service plan, working electrical system, cell reception and GPS signal. Does not include emergency or security services. See onstar.com for details and limitations. ²Available on select Apple® and Android™ devices. Service availability, features and functionality vary by vehicle, device and the plan you are enrolled in. Terms apply. Device data connection required. See onstar.com for details and limitations. ³Functionality is subject to limitations and varies by vehicle, infotainment system and location. Select service plan required. Certain Alexa Skills require account linking to use. Amazon, Alexa and all related marks are trademarks of Amazon.com, Inc., or its affiliates. See onstar.com for additional details. ⁴Service varies with conditions and location. Requires active service plan and paid AT&T® data plan. See onstar.com for details and limitations. ⁵Available on select 2017 model year and newer GM vehicles with compatible hardware. Third-party trademarks are the property of their respective third-party owners and used under agreement. Requires active service plan and paid AT&T vehicle data plan. See onstar.com for details and limitations. ⁶Spotify app requires active Spotify account. Visit spotify.com/auto on your smartphone, tablet or computer for terms and to set up an account. Available on select model year 2018 and newer infotainment systems with compatible hardware. Select service plan required.



STAY IN COMMAND WHEREVER THE ACTION LEADS

- Wireless Apple CarPlay® Compatibility¹
- Wireless Android Auto Compatibility²
- GMC Infotainment System³ With Navigation⁴ Is Available
- Bose Premium Seven-Speaker Audio System Is Available
- Wireless Charging⁵ Is Available



¹Vehicle user interface is a product of Apple® and its terms and privacy statements apply. Requires compatible iPhone® and data plan rates apply. Apple CarPlay, Siri, iPhone and Apple Music are trademarks of Apple, Inc., registered in the U.S. and other countries. ²Vehicle user interface is a product of Google and its terms and privacy statements apply. Requires the Android Auto app on Google Play and a compatible Android smartphone. Data plan rates apply. You can check which smartphones are compatible at [g.co/androidauto/requirements](https://www.google.com/androidauto/requirements). Android, Google Play and Android Auto are trademarks of Google LLC. ³Functionality varies by model. Full functionality requires compatible Bluetooth® and smartphone, and USB connectivity for some devices. ⁴Map coverage available in the United States, Puerto Rico and Canada. ⁵The system wirelessly charges one compatible mobile device. Some phones have built-in wireless charging technology and others require a special adapter/back cover. To check for phone or other device compatibility, see [my.gmc.com/learn](https://www.gmc.com/learn) or consult your carrier.



Due to current supply-chain shortages, certain features shown have limited or late availability, or are no longer available. See the window label or a dealer regarding the features on an individual vehicle.



EXPLORE MORE, ALEXA'S ON BOARD

Alexa functionality is fully integrated into your GMC Infotainment System.¹ With available Amazon Alexa Built-In,² you can ask Alexa to stream your favorite music services such as Spotify³ or Amazon Music, get directions, make calls, change your radio station and get routes to the nearest dealership—on the go. Alexa can also make shopping lists, play and resume audiobooks and get the score to last night's game.

¹Functionality varies by model. Full functionality requires compatible Bluetooth® and smartphone, and USB connectivity for some devices. ²Functionality is subject to limitations and varies by vehicle, infotainment system and location. Select service plan required. Certain Alexa Skills require account linking to use. Amazon, Alexa, Amazon Music and all related marks are trademarks of Amazon.com, Inc., or its affiliates. See onstar.com for additional details. ³Spotify app requires active Spotify account. Visit spotify.com/auto on your smartphone, tablet or computer for terms and to set up an account. Available on select model year 2018 and newer infotainment systems with compatible hardware. Select service plan required.





HELP WHEN YOU NEED IT

With available OnStar® Safety and Security, you'll have added peace of mind knowing an Emergency-Certified Advisor¹ is ready to help. Whether it's a crash, a vehicle theft or an emergency situation, help is available 24/7.

The Safety & Security Plan² includes the OnStar Guardian™ App,³ which lets you bring the key OnStar safety services you depend on into any vehicle. Help in a crash, assistance with a flat tire and more are available through your smartphone. Best of all, you can share OnStar Guardian with up to seven of your loved ones at no additional cost.



¹OnStar Emergency Advisors are certified by the International Academies of Emergency Dispatch.

²OnStar plan, working electrical system, cell reception and GPS signal required. OnStar links to emergency services. Not all vehicles may transmit all crash data. See onstar.com for details and limitations. ³U.S. and Canada only. Available on select Apple® and Android devices. Mobile Crash Response services are intended for use in select vehicles only and can connect automatically on Android devices only. Service coverage varies with conditions and location. Service availability, features and functionality vary by device and software version. OnStar Guardian service plan (stand-alone plan, add-on plan or plan that includes the service), cell reception, GPS signal and device data connection required. Terms apply. Device permissions are required for app to operate properly. OnStar links to emergency services. Device and app may not transmit all crash data. See onstar.com for details and limitations. Pricing and availability subject to change. You may cancel at any time by calling 1-888-4ONSTAR (1-888-466-7827).





FIND YOUR TRUE COLORS



SUMMIT
WHITE



WHITE FROST
TRICOAT^{1,2}



DESERT SAND
METALLIC^{1,3}



QUICKSILVER
METALLIC¹



CAYENNE RED
TINTCOAT¹




HUNTER
METALLIC^{1,4}



EBONY TWILIGHT
METALLIC¹



MARINE
METALLIC^{1,5}



¹Extra-cost color.
²Not available on SLE or Elevation Edition.
³Only available on AT4.
⁴Only available on Denali.
⁵Not available on AT4.

