

GMC

ACADIA

2015

WE ARE PROFESSIONAL GRADE





ACADIA SLT IN CRIMSON RED TINTCOAT
shown with available equipment.



ACADIA DENALI IN CARBON BLACK METALLIC
shown with available equipment.

2015 GMC ACADIA. We've given a lot of thought to creating a crossover without compromises. Acadia is the crossover engineered to help you handle your life's always-changing demands. With models designed to accommodate up to eight, it easily adapts to offer more max cargo capacity than any competitor in its class.¹ It also offers advanced technology to keep you alert, connected, entertained and, with an available industry-first Front Centre Air Bag,² safer. These are but a few of the ways incredible thinking elevates your driving life.

¹Comparison based on wardsauto.com 2014 Large Cross/Utility Vehicle segment and latest competitive information available at the time of printing. Excludes other GM vehicles. ²Always use safety belts and the correct child restraint for your child's age and size, even with air bags. Even in vehicles equipped with the Passenger Sensing System, children are safer when properly secured in a rear seat in the appropriate infant, child or booster seat. Never place a rear-facing infant restraint in the front seat of any vehicle equipped with an active frontal air bag. See your Owner's Manual and child safety seat Instructions for more safety information.

EXTERIOR | 2

INTERIOR | 8

PERFORMANCE | 20

SECURITY | 22

SELECTION | 26

ACADIA DENALI: THE HEIGHT OF STYLE.

Acadia Denali combines premium materials, signature styling and advanced technologies to make it the premier choice among crossovers. Its distinctive design is the result of smooth, flowing lines running uninterrupted from front to rear. It all culminates in signature chrome appointments and the features below, leaving little doubt that this crossover is every inch a Denali.

HIGH-INTENSITY DISCHARGE (HID)
PROJECTOR-BEAM HEADLAMPS AND
LED DAYTIME RUNNING LAMPS.

ICONIC DENALI GRILLE.

MACHINED ALUMINUM 20" WHEELS OR
AVAILABLE CHROME-CLAD ALUMINUM
20" WHEELS.

DUAL FLOW-THROUGH CHROME
EXHAUST OUTLETS.





ACADIA SLT: OUR SCULPTORS WORK IN SHEET METAL.

GMC designers crafted the high-roof, five-door design of Acadia SLT with a clear understanding of what you demand in a premium crossover without sacrificing one ounce of artful style. The low height of the rear bumper makes loading easier, while the low step-in door height allows people to enter with ease. You'll quickly find SLT offers many details that combine art and function, like the ones below.

POWER LIFTGATE.

PROJECTOR-BEAM FOG LAMPS.

HEATED POWER-FOLDING MIRRORS
[AVAILABLE].

19" ALUMINUM WHEELS.

A REFLECTION OF PREMIUM.

Acadia's sculpted surfaces are where form elegantly meets function, highlighted by chrome accents for good measure.

Its design brings aerodynamics into play to help you achieve more in your daily travels without all the resistance.



DENALI GRILLE The distinctive pattern of its 3-D chrome grille is a signature detail unique to the top-of-the-line Denali series.



WRAPAROUND REAR GLASS The wraparound rear glass design provides a clean, streamlined look.

POWER LIFTGATE This available feature opens with a touch of your key fob for easy access to the cargo area. Close it the same way, or use the button on the liftgate or the centre console.



HEATED POWER-FOLDING MIRRORS Helping remove snow, frost and fogging, these available power mirrors offer excellent visibility and extra clearance. Shown with optional Side Blind Zone Alert.



PROJECTOR-BEAM HEADLAMPS Available High-Intensity Discharge (HID) headlamps, LED daytime running lamps and LED taillamps increase visibility, giving Denali a necklace of illumination.

PROVIDES A WARM WELCOME, AND A COOL ONE, TOO.

Acadia Denali is designed with an inviting level of comfort, thanks to refinements like heated and cooled front seats, quiet surroundings and the craftsmanship expected from the height of GMC engineering. It combines premium materials and refinements like perforated leather-appointed first- and second-row seats with the precise detailing of contrasting French seam stitching. Denali greets you with even more comforting amenities.

NEW HEATED STEERING WHEEL.

HEAD-UP DISPLAY.

BOSE® 10-SPEAKER SOUND SYSTEM.

DENALI ACOUSTIC PACKAGE.





YOU SPEND A LOT OF TIME ON THE ROAD. MAKE IT SPECIAL.

Every seat in Acadia SLT provides a premium ride. Up front, you'll find leather-appointed seats in the first two rows as well as surrounding appointments that let you know you're in for something unexpected. SLT also offers a second-row bench seat to accommodate up to eight adults, or choose your second row with a pair of captain's chairs for seven-passenger seating. You'll also find a host of additional comfort and convenience features.

DRIVER INFORMATION CENTRE.

STEERING-WHEEL-MOUNTED CONTROLS.

REAR VISION CAMERA.

TRI-ZONE CLIMATE CONTROL.

EASY ON THE EYES.

We understand that you're most comfortable when you're informed and in full command. This is apparent from how available driver alert technologies, the available navigation system,¹ entertainment and climate controls are positioned in clear view and close at hand. That's why when you're in the driver's seat in Acadia, you're clearly in the driver's seat. Yet, of course, Acadia offers several more ways to help you stay in control.

VOICE-ACTIVATED INTELLILINK
[AVAILABLE].²

BLUETOOTH® CONNECTIVITY.³

TILT AND TELESCOPING STEERING
WHEEL.

HEAD-UP DISPLAY [AVAILABLE].



¹At time of printing, detailed map coverage is available for most major urban areas of the United States and for certain metropolitan areas of Canada (Vancouver, Calgary, Edmonton, Winnipeg, Windsor, London, Toronto, Ottawa, Montreal, Quebec City and Halifax). Coverage is significantly limited outside these areas. ²Full functionality requires compatible Bluetooth and smartphone, and USB connectivity for some devices. Visit intellilink.gmc.gm.ca for more details. ³Not compatible with all devices.



TECHNOLOGY WHERE IT BELONGS. AT YOUR FINGERTIPS.

Since technology is supposed to improve your life, Acadia makes sure it does just that by placing smart, intuitive, easy-to-use features all within reach.

COLOUR TOUCH AUDIO SYSTEM This standard system uses an intuitive 165 mm (6.5") diagonal high-definition touch-screen, making it easy to find important information. It includes AM/FM/CD radio/SiriusXM¹ capabilities (standard 3-month trial period) and gives you a customizable home page and USB² and auxiliary inputs for your MP3 player.

INTELLILINK³ Standard on most Colour Touch Audio systems and included with available Colour Touch Navigation,⁴ IntelliLink provides smartphone integration and voice-activated control of your communication and entertainment selections, including placing a call, changing stations, streaming Internet radio stations like Stitcher SmartRadio⁵ or accessing your music library. It also converts text messages into voice messages.

COLOUR TOUCH NAVIGATION⁴ WITH INTELLILINK³ The available NAV system, which includes IntelliLink, adds multiple map views. It also features 3 months of NavTraffic,⁶ so you'll get continuously updated traffic information incorporated into the navigation system.

USB CONNECTIVITY Plug into the USB port² and control most of your MP3 music player's functions, including playlists and song selection, with available steering-wheel-mounted radio controls.

SIRIUSXM SATELLITE RADIO¹ Enjoy SiriusXM Satellite Radio with a 3-month trial subscription.

MP3 PLAYBACK Bring the music and entertainment you love to your Acadia from most MP3 devices, including many smartphones.

HEAD-UP DISPLAY This available system projects important driving information at eye level on your windshield, such as speedometer and rpm readings, outside air temperature and more.

DENALI ACOUSTIC PACKAGE Denser sound-absorbing materials add to Acadia's already quiet environment.

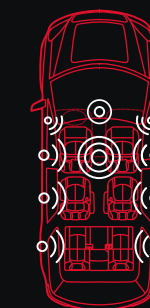
BLUETOOTH² FOR PHONE Keep your eyes on the road by activating Bluetooth on your phone or portable device.

120-VOLT AC POWER OUTLET An available 150-watt/120-volt AC household-current grounded power outlet is included with the Rear-Seat Entertainment System.

IN-CONSOLE POWER PORT A 12-volt DC power outlet is located in the centre console.

REAR VISION CAMERA It displays a real-time image in the Colour Touch Screen when Acadia is in reverse, making it easier to back up to a trailer or negotiate a tight space.

REAR-SEAT ENTERTAINMENT SYSTEM This available system offers gaming and DVD playback for rear-seat passengers. It includes a remote and two sets of wireless infrared headphones (batteries included).

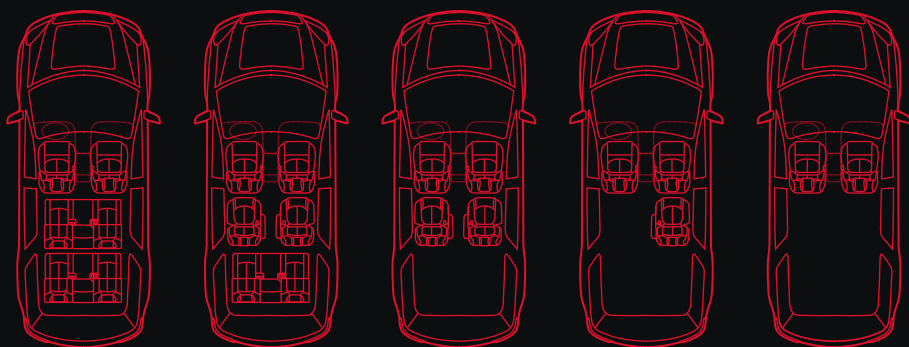


10-SPEAKER BOSE AUDIO SYSTEM The available premium 10-speaker Bose system creates the virtual realism of a live performance. Add available 5.1 Surround Sound when you choose the Rear-Seat Entertainment System.

¹Available in 10 Canadian provinces and the 48 contiguous United States. Subscription sold separately after trial period. If you decide to continue your service at the end of your trial subscription, the plan you choose will automatically renew and bill at then-current rates until you call 1-877-209-0079 to cancel. Other fees and taxes will apply. All fees and programming subject to change. See SiriusXM "Terms and Conditions" and complete details at siriusxm.ca. ²Not compatible with all devices. ³Full functionality requires compatible Bluetooth and smartphone, and USB connectivity for some devices. Visit intellilink.gmc.com for more details. ⁴At time of printing, detailed map coverage is available for most major urban areas of the United States and for certain metropolitan areas of Canada (Vancouver, Calgary, Edmonton, Winnipeg, Windsor, London, Toronto, Ottawa, Montreal, Quebec City and Halifax). Coverage is significantly limited outside these areas. ⁵Data plan rates apply.

PEOPLE? CARGO? BOTH? YES. YES. AND YES.

Acadia is designed to quickly and easily offer multiple seating and cargo configurations. Choose eight-passenger seating and get a sliding second-row bench seat that fits three adults comfortably. Select the available seven-passenger configuration, and the second row has two captain's chairs. To make third-row entry and exit easier, Acadia features Smart Slide second-row seats that slide forward with just one hand.



FOLD-FLAT FUNCTIONALITY FOR THE IMPRESSIVE CAPACITY OF A FULL-SIZE SUV, THE SECOND- AND THIRD-ROW SEATS FOLD FORWARD TO CREATE A FLAT LOAD FLOOR. THIS FLEXIBILITY GIVES YOU UP TO 3288 LITRES (116.1 CU. FT.)¹ OF CARGO CAPACITY.

¹Cargo and load capacity limited by weight and distribution.



IT'S ALL ABOUT CONTROLLING YOUR ENVIRONMENT.

Acadia surrounds you with a quiet environment, premium materials and convenience to elevate your travelling experience.

You'll also find controls conveniently located in the vehicle and on the key fob in the palm of your hand.



CENTRE CONSOLE This convenient and spacious centre console gives you multiple storage compartments. The padded armrest is movable to keep you comfortable in any seating position.

DRIVER INFORMATION CENTRE It includes the odometer and A/B trip odometers, as well as a message centre to keep you informed about vital vehicle functions and driving conditions.

CUPHOLDERS There are two console-mounted cupholders and two in the front doors for driver and passenger. Additional holders are in the second row, with one in each door, plus two more moulded into the third-row side panels.

NOISE SUPPRESSION To reduce road noise and control wind noise, Acadia uses sound-blocking and -deadening materials to fill even the most minute gaps and sound paths.



SILL PLATE Step through the driver's or front passenger's door of Acadia Denali and its illuminated, satin-chrome sill plates let you know you've entered luxury.

DENALI ACOUSTIC PACKAGE Additional sound-absorbing materials add to Acadia's already quiet environment.



TILT AND TELESCOPING STEERING WHEEL On Denali models, the power tilt and telescoping steering wheel moves up/down and in/out to make it easy to set the precise driving position.

HEATED STEERING WHEEL This new leather-wrapped, heated wheel adds warmth whenever you demand it (standard on SLT-2 and Denali).

REMOTE KEYLESS ENTRY At a range of up to 59 metres (195'), one touch will lock or unlock your Acadia or flash its lights and sound the horn to help you locate it in a parking lot.

TRI-ZONE CLIMATE CONTROL The available tri-zone climate control allows the driver and front-seat passenger to set separate temperatures.

STEERING-WHEEL-MOUNTED CONTROLS Access the audio system and your phone with your fingertips. Depending on the model, this feature controls most music search features of compatible MP3 players, as well as phone calls.

REMOTE VEHICLE STARTER SYSTEM Warm up—or cool off—your Acadia for up to 10 minutes without leaving the house. It's available to start Acadia up to 59 metres (195') away. With tri-zone climate control, the system automatically heats or cools the cabin.



REAR CONTROLS Second-row passengers get their own controls included with the available tri-zone climate control system, so they're able to set the temperature and fan speed to their liking.

REMOTE POWER LIFTGATE This available liftgate opens with a touch of your key fob for easier access to the cargo area. Close it the same way, or use the button on the liftgate or the centre console.

DUAL-PANEL SUNROOF The available dual-panel sunroof lets people seated in the second and third rows enjoy the outdoors, too.



HANDLES SITUATIONS LIKE A PRO.

Acadia's powertrain and handling more than live up to their Professional Grade status. Its 3.6L V6 engine is the ideal expression of what GMC engineering is all about—powerful yet efficient performance. The foundation of Acadia's premium character is a strong chassis and sophisticated suspension.

ENGINE

3.6L V6 VVT Engineered for responsiveness at all speeds, the 3.6L is the ideal blend of power and efficiency. With a direct-injected 24-valve, dual-overhead-cam design, it accelerates smoothly and quickly for confident highway passing and merging.

VARIABLE VALVE TIMING This provides the power of a high-performance engine with the low-speed response you need for situations such as trailering or climbing steep inclines.

OIL LIFE MONITOR For long life and durability, few things are more important than changing your oil at the right time. The Oil Life Monitor updates you with a message in the Driver Information Centre.



ONSTAR VEHICLE DIAGNOSTICS¹ The Vehicle Diagnostics service that comes with your 6-month trial subscription to OnStar runs hundreds of checks of the engine, transmission, anti-lock brakes and more, organizing it into an easy-to-read monthly e-mail.

TRANSMISSION

6-SPEED AUTOMATIC OVERDRIVE TRANSMISSION Designed to work seamlessly with the 3.6L, the transmission chooses the best gear for efficiency or power based on your driving style. It features Driver Shift Control, allowing you to manually shift gears for optimal control.

HANDLING

ALL-WHEEL DRIVE (AWD) Gain sure-footed traction and control in wet or dry weather with an available fully automatic AWD system (standard on SLT-2 and Denali).

WIDE STANCE/LONG WHEELBASE Acadia's long wheelbase produces a smooth ride at highway speeds, along with stability and confident cornering.

FULLY INDEPENDENT SUSPENSION Engineered for precise control and premium refinement, even on poorly maintained roads, is a four-wheel independent suspension.

POWER RACK-AND-PINION STEERING Power steering provides accurate response and a positive on-centre feel at highway speeds, as well as low-speed assist for manoeuvring in tight spaces.

ADVANCED DUAL-FLOW VALVING This feature in Acadia Denali's front suspension delivers a smoother ride and improved handling across a broad range of driving conditions.

ANTI-LOCK BRAKING SYSTEM (ABS) Confident stopping in a variety of conditions comes from four-channel anti-lock brakes.

TRACTION CONTROL SYSTEM To make the most of available traction on many road surfaces, the system sends power to the wheels with the most grip, so you can move forward with better control.

POWER FOUR-WHEEL DISC BRAKES For outstanding braking performance in most conditions, power four-wheel disc brakes are standard on every model.

TRAILERING PACKAGE Acadia achieves a maximum trailer weight rating of up to 2359 kg (5200 lb.).² This available package includes a heavy-duty cooling system, a factory-installed trailer hitch with a standard 51 mm (2") receiver, attaching points for safety chains and a seven-pin trailer harness with a built-in universal adapter.

¹Visit onstar.ca for coverage map, details and system limitations. Services vary by model and conditions. OnStar acts as a link to existing emergency service providers. Not all vehicles may transmit all crash data. After complimentary trial period, an active OnStar service plan is required. ²Maximum trailer weight ratings are calculated assuming a base vehicle, except for any option(s) necessary to achieve the rating, plus driver. The weight of other optional equipment, passengers and cargo will reduce the maximum trailer weight your vehicle can tow. See your GMC dealer for additional details.



YOUR WELL-BEING IS FIRST AND FOREMOST.

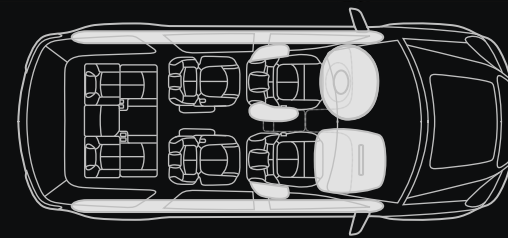
The industry-first and GM-exclusive Front Centre Air Bag¹ is designed to help protect you in a collision. Acadia offers a reassuring level of safety features—including the available Front Centre Air Bag, Forward Collision Alert and Lane Departure Warning. For 2014, Acadia received a 5-Star Overall Vehicle Score² for safety. Safety features are no substitute for the driver's responsibility to operate the vehicle in a safe manner. The driver should remain attentive to traffic, surroundings and road conditions at all times. Read the vehicle Owner's Manual for more important safety information.

¹Air bag inflation can cause severe injury or death to anyone too close to the air bag when it deploys. Be sure every occupant is properly restrained. Always use safety belts and the correct child restraint for your child's age and size, even with air bags. Even in vehicles equipped with the Passenger Sensing System, children are safer when properly secured in a rear seat in the appropriate infant, child or booster seat. Never place a rear-facing infant restraint in the front seat of any vehicle equipped with an active frontal air bag. See your Owner's Manual and child safety seat instructions for more safety information. ²U.S. government 5-Star Safety Ratings are part of the National Highway Traffic Safety Administration's (NHTSA) New Car Assessment Program (www.SaferCar.gov).

REAR CROSS TRAFFIC ALERT Monitoring your surroundings and working through the Rear Vision Camera, it sends audio and visual warnings, alerting you to cross traffic while backing up (standard on SLT-2 and Denali models).

DRIVER ALERT SYSTEMS Forward Collision Alert produces audible and visual signals if you are rapidly approaching another vehicle and a collision may be imminent. Lane Departure Warning alerts you if you wander from your lane without using your turn signal. They're standard on Denali and available on SLT-1 and SLT-2.

SIDE BLIND ZONE ALERT Available radar-equipped sensors monitor blind spots, alerting the driver via audio and visual warnings to help reduce the risk of collisions (standard on SLT-2 and Denali models).



FRONT CENTRE AIR BAG¹ The available Front Centre Air Bag is designed to help protect drivers and front-seat passengers in far-side crashes where the affected occupant is on the opposite, non-struck side of the vehicle.

SIDE-IMPACT AIR BAGS¹ They are mounted on the driver and front-passenger seats to help protect the thorax and pelvic regions of the driver and front passenger in a side-impact collision.

HEAD CURTAIN SIDE-IMPACT AIR BAGS¹ They unfurl from the roof rail like a protective curtain for outboard passengers and can be activated by either rollover or side-impact sensors.

FRONTAL AIR BAGS¹ To help reduce the risk of injury to driver and front passengers, the dual-stage frontal air bags gauge crash severity, then employ one or two levels of inflation.

LATCH CHILD SEAT ANCHORING SYSTEM Lower Anchors and Top tethers for CHildren (or LATCH) enables a child seat top tether strap to be attached to limit movement in a forward crash, helping reduce the chance of injury.

THEFT DETERRENT SYSTEM A tiny chip found in your ignition key prevents unauthorized starting attempts.

REINFORCED STEEL SAFETY CAGE DESIGN A robust body-frame-integral structure is engineered to help maintain the integrity of the passenger compartment in the event of a collision.

STABILITRAK STABILITY CONTROL SYSTEM To help you stay in control when road surfaces are loose, snowy, icy, wet or uneven, StabiliTrak monitors how Acadia is responding to your steering and braking commands.

LED DAYTIME RUNNING LAMPS By running the LED lamps in the daytime, you gain recognition by other drivers from a greater distance, giving you an extra measure of security.



GMC PRO GRADE PROTECTION. PROFESSIONAL GRADE COVERAGE.

Pro Grade Protection is standard on every 2015 Acadia. From scheduled maintenance to protecting your entire vehicle, you can drive with confidence.

2-YEAR/40,000 KM RECOMMENDED SCHEDULED MAINTENANCE¹

3-YEAR/60,000 KM NEW-VEHICLE LIMITED WARRANTY²

5-YEAR/160,000 KM POWERTRAIN LIMITED WARRANTY²

THERE WHEN YOU NEED US.



Standard for 6 months on most models, the OnStar Directions & Connections Plan³ lets you speak to a live OnStar Advisor just by pressing the blue OnStar button in your vehicle.

AUTOMATIC CRASH RESPONSE³ In many crashes, built-in sensors can automatically alert an OnStar Advisor who is immediately connected into your vehicle to see if you need help—even if you can't respond.

CRISIS ASSIST During severe weather or other crisis situations, OnStar can provide a quick, central point of contact when you need emergency assistance, navigation help or information.

EMERGENCY SERVICES One push of the red emergency button gives you a priority connection to an Advisor who can direct emergency service providers to your exact location—it's all a part of your OnStar subscription.

ROADSIDE ASSISTANCE⁴ If you need an emergency tow, lockout service or help with a flat tire, just push the blue OnStar button and an Advisor can direct help to your exact location—it's all a part of your OnStar subscription.

SECURITY FEATURES⁵ Remote Door Unlock, Remote Horn and Lights and Stolen Vehicle Assistance provide help when you need it.

HANDS-FREE CALLING⁶ WITH VOICE COMMAND Available OnStar Hands-Free Calling is a built-in service in case your cellphone is unavailable, out of range or has a low battery. Just push a button and say the number to make a call.

TURN-BY-TURN NAVIGATION Push your blue OnStar button and tell the Advisor where you want to go, and directions will be downloaded to your Acadia.

ONSTAR eNAV WITH MAPQUEST.CATM Get a head start on a trip by checking out your destination on mapquest.ca and then clicking the "Send" link. Directions will be sent to your Acadia.

DESTINATION DOWNLOAD With the optional Navigation System, an Advisor can download directions to your Acadia's navigation screen.

ONSTAR BASIC PLAN³ The 2015 Acadia comes with a 5-year OnStar Basic Plan.³ This standard service gives you access to the available RemoteLink Mobile App,⁷ which lets you lock, unlock and even start your Acadia remotely from your smartphone or tablet. You'll also be able to stay tuned in to your vehicle's health with OnStar Vehicle Diagnostics and Dealer Maintenance Notification.

¹The 2-Year Scheduled Lube-Oil-Filter Maintenance Program provides eligible customers in Canada who have purchased, leased or financed a new eligible 2015 MY Chevrolet, Buick or GMC vehicle (excluding Spark EV) with an ACDelco oil and filter change, in accordance with the Oil Life Monitor system and the Owner's Manual, for 2 years or 40,000 km, whichever occurs first, with a limit of four Lube-Oil-Filter services in total, performed at participating GM dealers. Fluid top-offs, inspections, tire rotations, wheel alignments and balancing, etc. are not covered. This offer may not be redeemed for cash and may not be combined with certain other consumer incentives available on GM vehicles. General Motors of Canada Limited reserves the right to amend or terminate this offer, in whole or in part, at any time without prior notice. Additional conditions and limitations apply. See dealer for details. ²Whichever comes first. See dealer for limited warranty details. ³Visit onstar.ca for coverage map, details and system limitations. Services vary by model and conditions. OnStar acts as a link to existing emergency service providers. Not all vehicles may transmit all crash data. After complimentary trial period, an active OnStar service plan is required. ⁴Roadside service provided by Allstate Roadside Services. ⁵Services vary by model and conditions. ⁶OnStar Hands-Free Calling requires existing OnStar service plan and prepaid minutes. Not available in certain markets. Visit onstar.ca for coverage map, details and system limitations. ⁷Remote features will only work if vehicle has started within 5 days. Available on select Apple,[®] Android,[™] BlackBerry[®] and Windows[®] devices. Services vary by device, vehicle and conditions. Requires an active OnStar service plan.

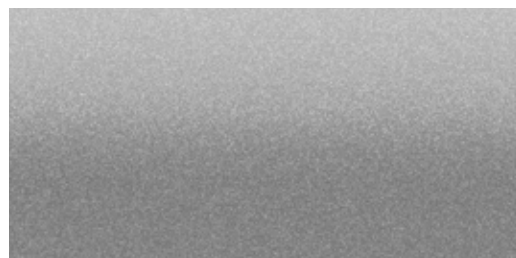
EXTERIOR COLOURS



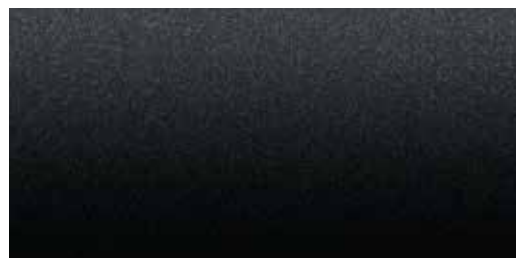
Midnight Amethyst Metallic¹



Champagne Silver Metallic²



Quicksilver Metallic



Carbon Black Metallic¹



Crimson Red Tintcoat¹



Iridium Metallic



Dark Sapphire Blue Metallic²



White Diamond Tricoat¹



Summit White²

All colours are basecoat/clearcoat for high-gloss and durable finish. See dealer for more details. ¹Extra-cost colour. ²Not available on Denali.

WHEELS



18" ALUMINUM (RSZ)
STANDARD ON SLE



19" ALUMINUM (RZA)
STANDARD ON SLT



20" MACHINED ALUMINUM (PEP)
STANDARD ON DENALI



20" CHROME-CLAD ALUMINUM (PPE)
AVAILABLE ON DENALI

INTERIOR COLOURS AND SEATING SURFACES

PREMIUM CLOTH Standard on SLE



Light Titanium



Ebony

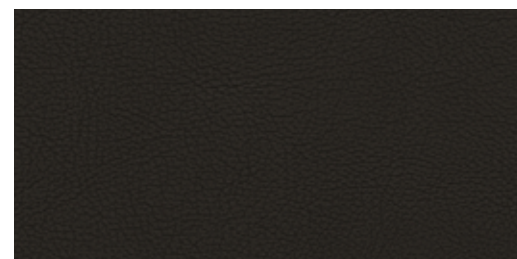
LEATHER-APPOINTED Standard on SLT



Dark Cashmere³



Light Titanium



Ebony

PERFORATED LEATHER-APPOINTED Available on SLT



Dark Cashmere³



Light Titanium



Ebony

PERFORATED LEATHER-APPOINTED Standard on Denali



Cocoa/Dune³



Ebony

³Not available with eight-passenger seating.

ADD YOUR OWN STYLE.

GMC Accessories are engineered and tested to meet the Professional Grade standards of your Acadia. Available individually or as part of a package, they allow you to further personalize your Acadia.



SIDE-WINDOW WEATHER DEFLECTORS Let fresh air in and keep rain, sleet and snow out. Available in Smoke.

ASSIST STEPS They make it easier to get into and out of your Acadia. Constructed of high-strength aluminum, these 152 mm [6"] chrome steps are topped with full-length black traction pads.

DUAL-HEAD-RESTRAINT DVD SYSTEM Rear-seat passengers will enjoy dual LCD monitors and DVD players built into the back of the front-seat head restraints. Includes wireless headphones and a remote control.

ROOF RACK CROSS RAIL PACKAGE Carry up to a 91 kg [200-lb.]¹ load on the roof of your Acadia.

CARGO SHADE Keep the cargo area hidden with this Ebony fabric cargo shade. It easily attaches and folds or rolls for easy storage.

CARGO NET Enhance the efficiency of your Acadia with this black cargo net. It attaches easily to the sides of your cargo area to secure small, light items while in transit.

CARGO ORGANIZER This durable, flexible, collapsible organizer has multiple compartments, allowing you to carry lightweight items of various sizes. Can be folded flat and is black with GMC logo.

DISTINCTIVE WHEELS Choose from several styles designed to further enhance the appearance of your Acadia.

HITCH BALL ASSEMBLY This standard-size assembly comes complete with a chrome-finish tow ball, washer and retaining nut. Designed to fit standard ball mount assemblies (sold separately).

PREMIUM ALL-WEATHER FLOOR MATS Fits the floor configuration and a deep-ribbed pattern collects debris. Nibs on the back keep them in place. Available in Ebony, Light Titanium and Dune to match your interior.

TRIM LEVELS

MECHANICAL

DISC BRAKES 4-wheel anti-lock, 4-wheel disc

DRIVETRAIN Front-wheel drive

All-wheel drive

ENGINE 3.6L direct-injection V6 VVT; 281 hp and 266 lb.-ft. of torque (288 hp and 270 lb.-ft. of torque on Denali)

ENGINE BLOCK HEATER

ENGINE OIL LIFE MONITOR

EXHAUST Single with downturned outlet

Dual with flow-through fascia design

STABILITRAK Stability control system and traction control

STEERING Power

Variable effort

SUSPENSION Front and rear independent

TRAILERING EQUIPMENT Includes heavy-duty cooling and factory-installed trailer hitch

TRANSMISSION 6-speed automatic electronically controlled with overdrive

SEATING

SEAT TRIM Premium Cloth

Leather-appointed, first and second rows

Perforated leather-appointed seating, first and second rows

SEATS 4-way driver (includes lumbar control) and 2-way front-passenger buckets, manual adjustment
8-way power driver with power recline and lumbar control. Includes 2-way power front-passenger seat with manual recline and lumbar control on SLE-2 models.

8-way power driver with power recline and lumbar control, 2-position memory for driver's seat and exterior rearview mirrors

8-way power front-passenger seat

Heated front seats

Heated and cooled front seats. Included with perforated leather-appointed seating surfaces.

60/40 split-folding 3-passenger third-row bench

8-passenger seating (2-3-3 configuration). Includes second-row 60/40 split flat-folding bench seat with Smart Slide.

7-passenger seating (2-2-3 configuration). Includes second-row flat-folding captain's chairs with Smart Slide.

INSTRUMENTATION AND CONTROLS

ELECTRONIC CRUISE CONTROL

HEAD-UP DISPLAY Includes digital multifunction readouts. Requires Technology Package on SLT-2.

INSTRUMENTATION 5-gauge, outside temperature indicator and Driver Information Centre

Enhanced Driver Information Centre includes outside temperature indicator, digital compass display, trip odometer, oil life, average speed, distance and time to go, average fuel used, tire pressure monitor and Help menu

REAR VISION CAMERA With dynamic guidelines

STEERING WHEEL Tilt-Wheel and telescoping

Power tilt and telescoping

Leather-wrapped with audio controls

Heated leather-wrapped with audio controls. Includes mahogany wood trim on Denali models.

REAR PARK ASSIST

SLE-1
SLE-2
SLT-1
SLT-2
DENALI

INTERIOR DETAILS

CARGO STORAGE Under rear floor

CLIMATE CONTROL Air conditioning, single-zone manual

Tri-zone air conditioning with individual climate settings for driver and front passenger and second-/third-row controls

CONSOLES Overhead console with map lights. On SLT-1, SLT-2 and Denali models, includes Universal Home Remote.

Front centre console with storage

CUPHOLDERS 10 (12 with 8-passenger seating)

DEFOGGER Rear window electric

FLOOR MATS Colour-keyed, carpeted for all 3 rows, removable

Premium, Denali-specific, carpeted for all 3 rows

INSULATION Acoustical package

Premium acoustical package

LIGHTING Interior ambient light in instrument panel

MIRRORS Interior rearview, manual

Interior rearview, auto-dimming

POWER DOOR LOCKS

POWER OUTLET 3-prong, 120-volt, household-style. Included and only available with Rear-Seat Entertainment System.

POWER WINDOWS With driver express-down

With driver express-up and -down and passenger express-down

REMOTE KEYLESS ENTRY Programmable with 2 transmitters, panic button and extended range

REMOTE VEHICLE STARTER SYSTEM

SILL PLATE Illuminated, front

SUNROOF 2-panel Dual Skyscape. Tilt-sliding, front and fixed rear with sunscreen.

TECHNOLOGY PACKAGE Includes Head-Up Display, cargo-area audio system controls and High-Intensity Discharge projector low-beam headlamps. Requires Forward Collision Alert and Lane Departure Warning on SLT-2 trim.

TIRE PRESSURE MONITORING SYSTEM Does not monitor spare tire

UNIVERSAL HOME REMOTE 3-channel programmable. Includes garage-door opener.

ENTERTAINMENT/COMMUNICATION/NAVIGATION

COLOUR TOUCH RADIO AM/FM/SiriusXM² (standard 3-month trial period) capable with CD player, 165 mm [6.5"] diagonal touch-screen display, USB port³ and auxiliary input jack

COLOUR TOUCH RADIO IntelliLink,⁴ AM/FM/SiriusXM² (standard 3-month trial period) capable with CD player, 165 mm [6.5"] diagonal touch-screen display, USB port³ and auxiliary input jack

COLOUR TOUCH NAVIGATION⁵ With IntelliLink,⁴ AM/FM/SiriusXM² (standard 3-month trial period) capable with CD player, 165 mm [6.5"] diagonal touch-screen display, USB port³ and auxiliary input jack

REAR-SEAT ENTERTAINMENT SYSTEM Includes DVD player with remote control, overhead display, 2 sets of 2-channel wireless infrared headphones, auxiliary audio/video input jacks, 3-prong household-style power outlet and 10-speaker Bose[®] sound system supporting discrete 5.1 recorded material

REAR-SEAT USB PORTS³ Dual charge-only. Located rear of centre console.

²Available in 10 Canadian provinces and the 48 contiguous United States. Subscription sold separately after trial period. If you decide to continue your service at the end of your trial subscription, the plan you choose will automatically renew and bill at then-current rates until you call 1-877-209-0079 to cancel. Other fees and taxes will apply. All fees and programming subject to change. See SiriusXM "Terms & Conditions" and complete details at siriusxm.ca. ³Not compatible with all devices. ⁴Full functionality requires compatible Bluetooth and smartphone, and USB connectivity for some devices. Visit intellilink.gmc.gm.ca for more details. ⁵At time of printing, detailed map coverage is available for most major urban areas of the United States and for certain metropolitan areas of Canada (Vancouver, Calgary, Edmonton, Winnipeg, Windsor, London, Toronto, Ottawa, Montreal, Quebec City and Halifax). Coverage is significantly limited outside these areas.

SLE-1
SLE-2
SLT-1
SLT-2
DENALI

KEY ● STANDARD ○ AVAILABLE – NOT AVAILABLE

¹Cargo and load capacity limited by weight and distribution.

TRIM LEVELS	SLE-1	SLE-2	SLT-1	SLT-2	DENALI
ENTERTAINMENT/COMMUNICATION/NAVIGATION, continued					
AUDIO 6-speaker system	●	●	–	–	–
10-speaker Bose premium sound system with subwoofer	–	–	●	●	●
With 5.1 Surround Sound. Requires Rear-Seat Entertainment System.	–	–	○	○	○
Audio controls located in cargo area. Requires Technology Package on SLT-2.	–	–	–	○	●
SIRIUSXM SATELLITE RADIO ¹ Standard on all Acadia sound systems, including 3 trial months of service	●	●	●	●	●
NAVTRAFIC ¹ Included and only available with Colour Touch Navigation System ²	–	–	○	○	○
BLUETOOTH ^{®3} For phone, personal cellphone connectivity to vehicle audio system	●	●	●	●	●
ONSTAR ⁴ 6 months of Directions & Connections Plan	●	●	●	●	●
EXTERIOR STYLING AND FUNCTIONALITY					
DOOR HANDLES Chrome. On SLE models, includes black beltline moulding; on SLT and Denali models, includes bright beltline moulding.	●	●	●	●	●
FASCIAS Front and rear body-colour, Denali-specific	–	–	–	–	●
GLASS Privacy Solar-Ray except windshield and driver and front-passenger-side glass	●	●	●	●	●
GRILLE Signature Denali	–	–	–	–	●
LIGHTS Dual halogen projector-beam headlamps	●	●	●	●	–
High-Intensity Discharge projector low-beam headlamps, with halogen projector high beams. Requires Technology Package on SLT-2.	–	–	–	○	●
Daytime running lamps, LED	●	●	●	●	●
Front halogen fog lamps	–	–	●	●	●
MOULDINGS Body-colour bodyside	●	●	●	●	–
Denali-specific, body-colour bodyside with chrome insert and body-colour rocker moulding	–	–	–	–	●
EXTERIOR MIRRORS Power-adjustable, manual-folding, black	●	●	–	–	–
Heated, power-adjustable, manual-folding with integrated turn-signal indicators, body-colour	–	–	●	–	–
Heated, power-adjustable, power-folding and driver-side auto-dimming, with integrated turn-signal indicators and driver-side memory, body-colour	–	–	–	●	●
REAR LIFTGATE Manual	●	–	–	–	–
Power	–	●	●	●	●
WIPERS Front and rear intermittent with washers	●	●	●	●	●
ROOF RAILS	●	●	●	●	–
Bright, Denali-specific	–	–	–	–	●
SAFETY AND SECURITY					
AIR BAGS ⁵ Includes driver and front-passenger frontal air bags with Passenger Sensing System, front-row side-impact air bags and head curtain side-impact air bags with rollover protection in all 3 rows	●	●	●	●	●
Driver inboard seat-mounted front centre side-impact air bag	–	●	●	●	●
FORWARD COLLISION ALERT AND LANE DEPARTURE WARNING	–	–	○	○	●
REAR CROSS TRAFFIC ALERT	–	–	–	●	●
SIDE BLIND ZONE ALERT	–	–	–	●	●
VEHICLE THEFT-DETERRENT SYSTEM With engine immobilizer	●	●	●	●	●

KEY ● STANDARD ○ AVAILABLE – NOT AVAILABLE

STANDARD TECHNICAL DATA	
3.6L V6 VVT DI ENGINE	
Bore and stroke (mm)	94.0 x 85.6
Horsepower @ rpm	281 @ 6300 (288 on Denali)
Torque @ rpm (lb.-ft.)	266 @ 3400 (270 on Denali)
Compression ratio	11.3:1
Valvetrain	Dual-overhead cam with 4 valves per cylinder
Fuel delivery	Spark-ignited direct fuel injection
TRANSMISSION	6-speed automatic Hydra-Matic 6T75
STANDARD FRONT-WHEEL DRIVE (FWD)	
AVAILABLE ALL-WHEEL DRIVE (AWD) Standard on SLT-2 and Denali models	Active Intelligent AWD
BRAKES	4-wheel disc with anti-lock braking system
STEERING	Hydraulic rack-and-pinion system
BATTERY	690 cold-cranking amps
ALTERNATOR	170 amps
FUEL TANK CAPACITY	83 litres (18.3 imp. gal.) [approx.]
ESTIMATED FUEL-CONSUMPTION RATING ⁶ L/100 km (mpg)	
FWD	14.2 (20) city/9.9 (29) hwy
AWD	14.6 (19) city/10.2 (28) hwy
TRAILERING DATA	
FWD/AWD	Axle ratio: 3.16, Maximum Trailer Weight: ⁷ 2359 kg (5200 lb.)
GROSS VEHICLE WEIGHT RATING ⁸ (GVWR), kg (lb.)	
FWD/AWD	2908/2930 (6411/6459)
EXTERIOR DIMENSIONS , mm (in.)	
Overall Height	1844 (72.6) with roof rails
Overall Width	2004 (78.9)
Overall Length	5100 (200.8)
Wheelbase	3020 (118.9)
INTERIOR DIMENSIONS	
Head Room, mm (in.)	First row 1024 (40.3)/second row 1006 (39.6)/third row 975 (38.4)
Leg Room, mm (in.)	First row 1049 (41.3)/second row (max) 935 (36.8)/third row 843 (33.2)
Shoulder Room, mm (in.)	First row 1565 (61.6)/second row 1549 (61.0)/third row 1468 (57.8)
Hip Room, mm (in.)	First row 1473 (58.0)/second row 1468 (57.8)/third row 1227 (48.3)
Interior Volume, litres (cu. ft.)	4851 (171.3)
CARGO AREA DIMENSIONS , litres (cu. ft.) ⁹	
Second and third rows folded	3288 (116.1)
Second row up/third row folded	1985 (70.1)
Behind third row	682 (24.1)

¹Available in 10 Canadian provinces and the 48 contiguous United States. Subscription sold separately after trial period. If you decide to continue your service at the end of your trial subscription, the plan you choose will automatically renew and bill at then-current rates until you call 1-877-209-0079 to cancel. Other fees and taxes will apply. All fees and programming subject to change. See SiriusXM "Terms & Conditions" and complete details at siriusxm.ca. ²At time of printing, detailed map coverage is available for most major urban areas of the United States and for certain metropolitan areas of Canada (Vancouver, Calgary, Edmonton, Winnipeg, Windsor, London, Toronto, Ottawa, Montreal, Quebec City and Halifax). Coverage is significantly limited outside these areas. ³Not compatible with all devices. ⁴Visit onstar.ca for coverage map, details and system limitations. Services vary by model and conditions. OnStar acts as a link to existing emergency service providers. Not all vehicles may transmit all crash data. After complimentary trial period, an active OnStar service plan is required. ⁵A NOTE ON CHILD SAFETY: Always use safety belts and the correct child restraint for your child's age and size, even with air bags. Even in vehicles equipped with the Passenger Sensing System, children are safer when properly secured in a rear seat in the appropriate infant, child or booster seat. Never place a rear-facing infant restraint in the front seat of any vehicle equipped with an active frontal air bag. See your vehicle Owner's Manual and child safety seat instructions for more safety information. ⁶Fuel-consumption estimates based on GM preliminary testing in accordance with new 2015 model-year Government of Canada approved test methods. Refer to vehicles.nrcan.gc.ca for details. Your actual fuel consumption may vary. ⁷Maximum trailer weight ratings are calculated assuming a base vehicle, except for any option(s) necessary to achieve the rating, plus driver. The weight of other optional equipment, passengers and cargo will reduce the maximum trailer weight your vehicle can tow. See your dealer for details. ⁸When properly equipped, includes weight of vehicle, passengers, cargo and equipment. ⁹Cargo and load capacity limited by weight and distribution.

PEACE OF MIND, STANDARD WITH EVERY GMC MODEL

When you build them with quality, you can back them with confidence. That's why General Motors of Canada backs every GMC model with the best coverage in Canada. Program highlights include:

- 2-year/40,000 km Recommended Scheduled Maintenance¹
- 3-year/60,000 km New-Vehicle Limited Warranty²
- 5-year/160,000 km Powertrain Component Limited Warranty, with \$0 deductible on repairs and the warranty is fully transferable at no charge²
- 5-year/160,000 km Courtesy Transportation²
- 5-year/160,000 km 24/7 Roadside Assistance²
- 6-year/160,000 km rust-through perforation coverage²
- 8-year/130,000 km coverage on catalytic converters and Powertrain Control Modules (PCMs)²

OTHER OWNERSHIP PRIVILEGES AND PROGRAMS:³

- **GM Protection Plan (GMPP)**—The only extended service plan backed by the resources and commitment of General Motors, GMPP may be purchased at the time of sale or subsequently during the New-Vehicle Limited Warranty period.
- **Certified Service**—With GM-certified technicians and GM-approved parts, nobody knows your GM vehicle better.
- **GMC Owner Centre**—As an owner, take advantage of the GMC Owner Centre. This online owner's destination gives you access to coupons, contests, current offers and the latest driving and maintenance tips. Find out more at [gmcowner.ca](#).

TO HELP YOU PURCHASE OR LEASE A NEW VEHICLE:

- **Purchase Financing and Leasing**—On-the-spot financing, see dealer for full details.⁴
- **GM Student Bonus Program**—Students or recent graduates of high school, college or university⁵ may be eligible to receive a Student Bonus vehicle redemption allowance of \$500 or \$750⁵ (tax inclusive) (purchased vehicle dependant) to use toward the purchase, lease or finance of one eligible new GMC vehicle.
- **The GM Card**—GM cardholders may redeem up to \$2500 GM Card[®] Earnings (subject to Vehicle Redemption Allowances) toward the Total Purchase Price on eligible new GM vehicles.⁵ For full program details, please visit [thegmcard.ca](#).

INFORMATION RESOURCES:

You can find more information about these programs from your GMC dealer, or at these information centres:

- The GM Web site at [gm.ca](#)
- The GM Customer Care Centre at **1-800-GM-DRIVE (1-800-463-7483 or 1-800-263-3830** for TDD users)

A WORD ABOUT THIS BROCHURE

Some of the equipment shown or described throughout this brochure may be available at extra cost. We have tried to make this brochure comprehensive and factual. We reserve the right, however, to make changes at any time, without notice, in prices, colours, materials, equipment, specifications, models and availability. Specifications, dimensions, measurements, ratings and other numbers in this brochure and other printed materials provided at the dealership or affixed to vehicles are approximates based upon design and engineering drawings and prototypes and laboratory tests. Your vehicle may differ due to variations in manufacture and equipment. Since some information may have been adapted since the time of printing, please check with your GMC dealer for complete details. General Motors of Canada Limited reserves the right to lengthen or shorten the model year for any product, for any reason, or to start and end model years at different times.

A WORD ABOUT ASSEMBLY

GMC vehicles are equipped with engines and components produced and assembled by different operating units of General Motors, its subsidiaries and suppliers to GM worldwide. We sometimes find it necessary to produce GMC vehicles with different or differently sourced components than originally scheduled. Since some options may be unavailable when your vehicle is assembled, we suggest that you verify that your vehicle includes the equipment you ordered or, if there are changes, that they are acceptable to you.

TRADEMARKS

©2014 General Motors of Canada Limited. All rights reserved. The marks appearing in this brochure, including but not limited to: General Motors, GM, GMC, Acadia, Denali and their respective logos, emblems, slogans and vehicle model names and body designs; and other marks such as Solar-Ray and StabiliTrak are trademarks of General Motors and/or General Motors of Canada Limited, its subsidiaries, affiliates or licensors. OnStar, the OnStar emblem and Directions & Connections are registered trademarks of OnStar, LLC. The SiriusXM name and related logos are trademarks of SiriusXM Canada, Canadian Satellite Radio, Inc. Bluetooth is a registered trademark of Bluetooth SIG, Inc. AudioPilot, Bose, Centerpoint and SurroundStage are registered trademarks of the Bose Corporation. Apple is a registered trademark of Apple, Inc. Android is a trademark of Google, Inc. BlackBerry is a registered trademark of Research In Motion, Inc. Windows is a registered trademark of Microsoft Corporation.

¹The 2-Year Scheduled LDF Maintenance Program provides eligible customers in Canada who have purchased, leased or financed a new eligible 2015 MY Chevrolet, Buick or GMC vehicle (excluding Spark EV) with an ACDelco oil and filter change, in accordance with the Oil Life Monitoring System and the Owner's Manual, for 2 years or 40,000 km, whichever occurs first, with a limit of four lube-oil-filter services in total, performed at participating GM dealers. Fluid top-offs, inspections, tire rotations, wheel alignments and balancing, etc., are not covered. This offer may not be redeemed for cash and may not be combined with certain other consumer incentives available on GM vehicles. General Motors of Canada Limited reserves the right to amend or terminate this offer, in whole or in part, at any time without prior notice. Additional conditions and limitations apply. See dealer for details. ²Whichever comes first. Conditions and limitations apply, see dealer for details. ³Conditions and limitations apply. ⁴Subject to eligibility. ⁵Program subject to change.

VISIT US AT [GM.CA](#)



191-15-B-009E