

THE HOLDEN COMMODORE.
EXECUTIVE, ACCLAIM, BERLINA, S AND SS.





THE COMMODORE THAT WILL RESHAPE AUSTRALIAN MOTORING.

This is the Holden Commodore you've always wanted.

It's obvious from just one look that Holden's huge investment in design and quality manufacturing has paid dividends.

There's no question this smoother, quieter Commodore has it all.

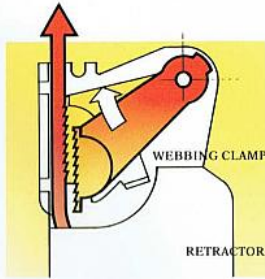
To help avoid an accident or survive one, Holden's Total Safety Systems (TSS) incorporate over fifty safety & security features with the life saving technology of an Airbag, a first for an Australian built car.

Feel secure with a combination of safety features never seen in an Australian built car before.

Admire the distinctive shape that reflects a classic, European style and feel the improved V6 power.

Experience a standard of handling that is offered by the availability of Independent Rear Suspension and ABS on Commodore.

A totally revised front suspension with a wider track front and rear, helping reduce Noise Vibration Harshness (NVH), leaving a lot of big reputations struggling for



Seat belt webbing clamps standard on front seats.



breath, as they attempt to catch up.

And relax with a sound system incorporating four six inch speakers, two located in the front and two in the rear, for improved sound.

All complemented by some of the most sophisticated computer technology in the world.

But Holden hasn't simply borrowed that technology.

It's technology that's been

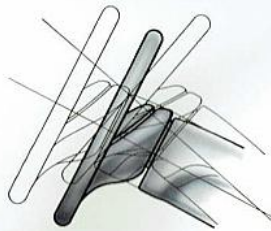


Refined, quieter, more powerful V6, that delivers improved economy.

modified, and in many cases improved, by Australians for Australian conditions.

And no-one knows more than Holden what's needed for driving in one of the harshest environments in the world.

The quieter Holden Commodore V6 continues to perform with improved towing capacity, better fuel economy and lower running costs.



A high degree of driver comfort, with telescopic and tilt steering wheel.

The Federal Government's 1992 Fuel Consumption Guide shows that Holden Commodore has the best AS2877 fuel economy of any passenger car on sale in Australia over 3.0 litres engine capacity.

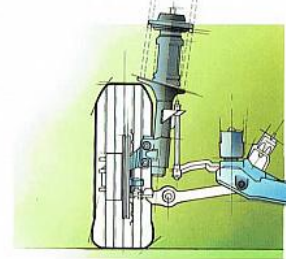
A lower fuel consumption also means a lower level of exhaust emissions, another high priority at Holden and something General Motors has pioneered.



One of the world's most sophisticated security systems, conveniently located in the key, no longer making it a two piece security system.

For example, Holden's catalytic converter has reduced hydrocarbons and carbon monoxide exhaust emissions by over 90%.

It goes without saying the Holden Commodore is a very tempting value packed choice, with 15" wheels, door deadlocks, auto headlamps off and the availability of the 4 speed electronic automatic transmission with power/economy mode control.



New front suspension and wider track, with 15" wheels make the Commodore even more of a driver's car and still great value.

And fortunately it has one of the most advanced security systems available anywhere in the world, that conveniently locates your own personal computer code within the key.

Press the button on top of the key and the code is transmitted.

This code, which changes constantly, tells the central co-ordinating body computer to unlock the doors, which in turn, tells the engine control module to enable the ignition to operate.

We may never be able to eliminate car theft, but this vehicle immobilisation system goes a long way towards achieving that goal.

While so much has changed, you'll appreciate some things haven't.

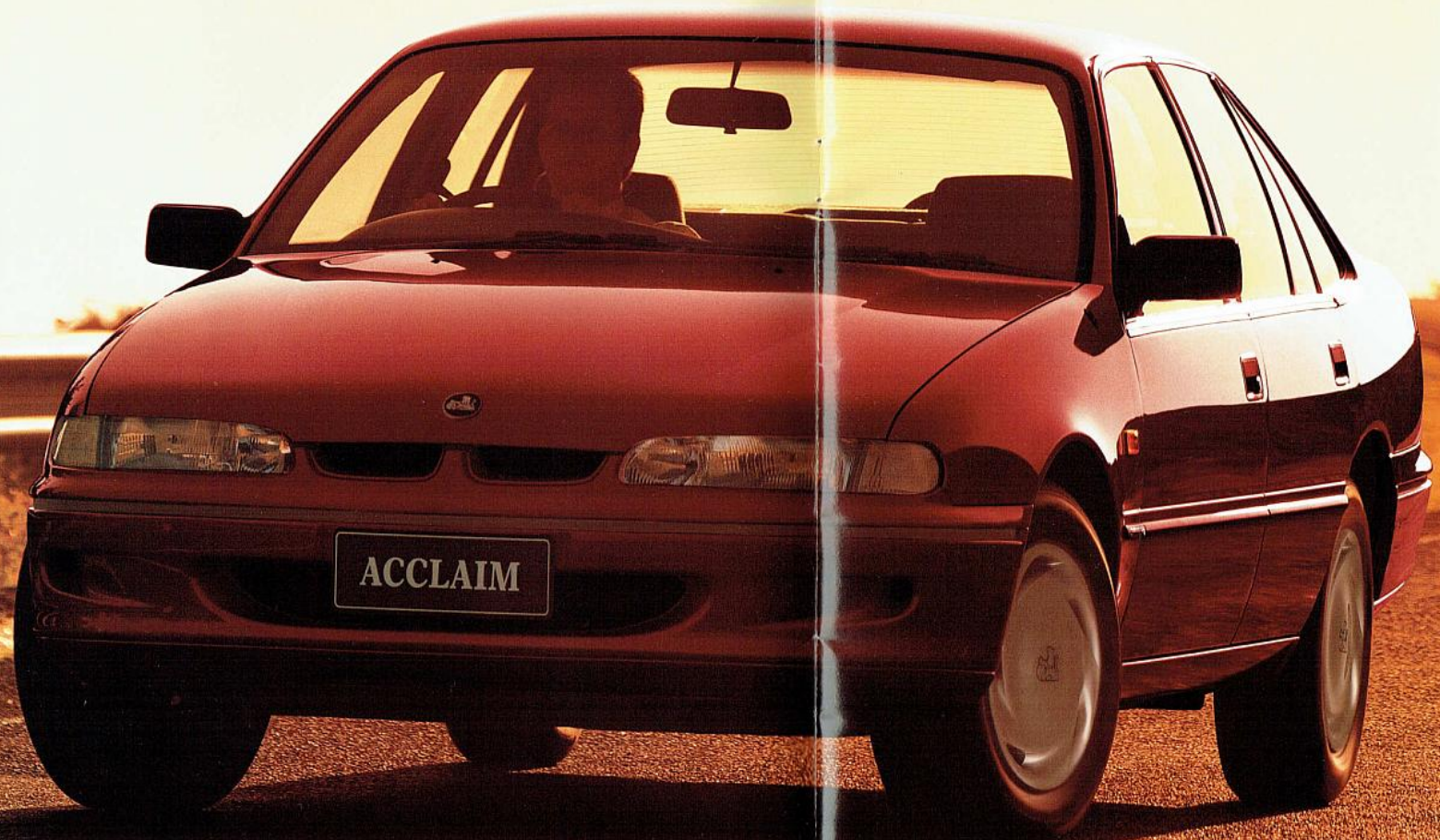
Holden Commodore's reputation for reliability, dependability and toughness goes on and on and on.

As does the biggest range of Commodore family sedans and wagons, with the availability of our own legendary Holden 5 litre V8.

So don't wait any longer, because how much longer can a family car continue to offer so much.



A rear centre lap sash seat belt is standard in the sedan.



THE SAFEST AUSTRALIAN FAMILY CAR EVER.

At Holden, safety has never been relegated to second or third place.

It's very much safety first.

And no Holden Commodore demonstrates that commitment and focus more than the all new Holden Commodore Acclaim.

In fact, the Commodore Acclaim is the safest Australian family car, with Airbag, Anti-lock Braking (ABS), Independent Rear Suspension (IRS), new electronic 4 speed automatic transmission and Cruise Control all standard.

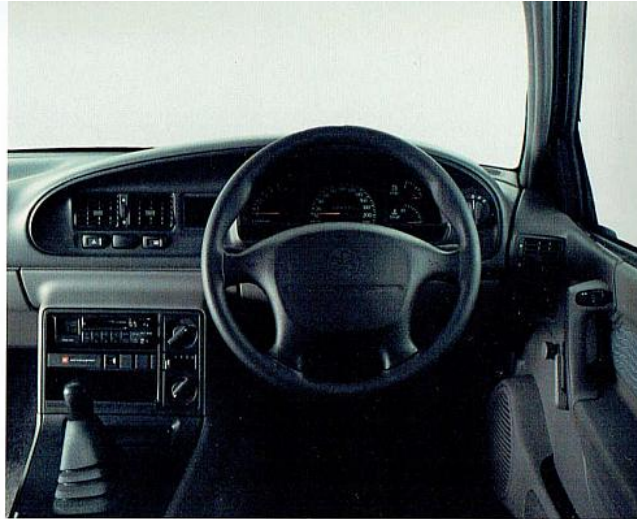
With its big V6 and low running costs the Commodore Acclaim also proves it's not necessary to sacrifice power and economy for safety.

Of course, the key to safe motoring is avoiding an accident.

That doesn't mean never venturing out onto the road.

It means driving a car that's equipped with features to keep you out of harm's way.

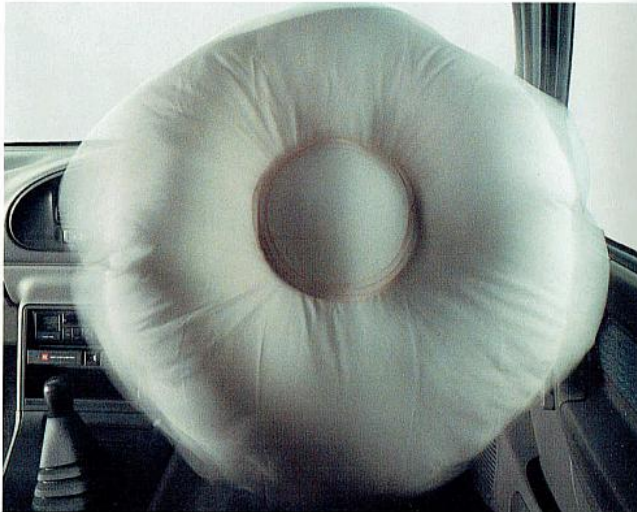
And in 99% of cases, that's the critical issue, which is where the combination of Anti-lock Braking and Independent Rear Suspension is so effective.



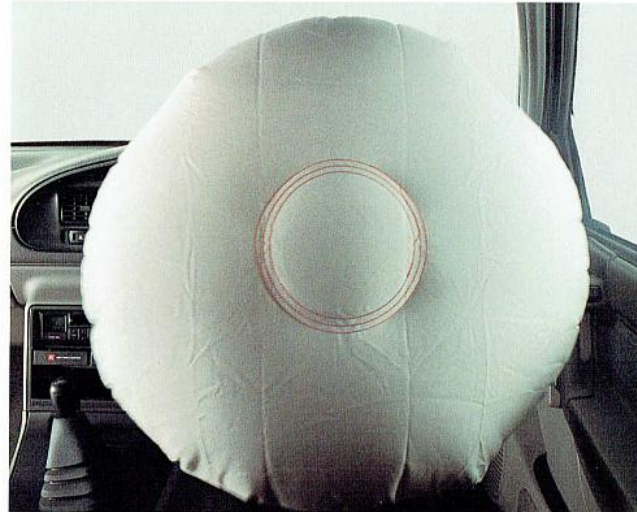
A. The Airbag is triggered by a crash sensor, which is a self-contained, electronic sensing, microprocessor-controlled system.



B. 25 Milliseconds. Burst out occurs. The Airbag, housed in the centre of the steering wheel, splits its covering pad in predetermined places and inflates rapidly.



C. 35 Milliseconds. As the Airbag inflates the unique tethers ensure correct positioning.



D. 45 Milliseconds. The Airbag is fully inflated and waiting for the driver who has moved less than 50mm in the seat. Total preparation time is less than an eye blink.

designed driver's side Airbag is standard in the Commodore Acclaim sedan and wagon.

Not an Airbag designed for Americans, where seat belts are not compulsory. Not a European "face bag". But an Airbag Holden has spent a lot of time and money refining and perfecting for Australians.

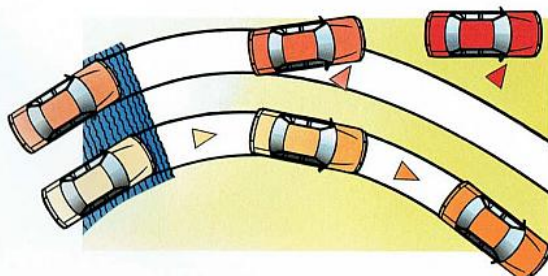
Part of that time has involved testing at the Holden test facilities at Lang Lang - the best equipped safety test facilities in Australia.

Holden's unique Airbag is designed to reduce facial damage, neck, head, chest and leg injuries.

Other safety features that make up Holden's Total Safety Systems, over sixty of them, also include a safety cage that provides improved protection during collisions and rollover accidents.



So when it comes to protecting Australians and their families, the development of the Commodore Acclaim has been no accident.



Anti-lock Braking (ABS) assists the driver (lower track) in an emergency situation by maintaining steering control, even under full braking.

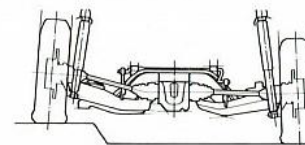
In an emergency braking situation, the ABS will ensure you have full steering control, so the car goes where you point it, even in adverse conditions.

While the IRS gives greater rear wheel traction, helping the vehicle to stay in contact with the road surface.

Remember, a few metres can

be the difference between a serious accident and one that never happens.

However, the reality is, some



Independent Rear Suspension (IRS) irons out corrugations, ensuring better traction.

accidents are simply unavoidable.

To keep you firmly in place, all Commodores now incorporate front seat belt webbing clamps as standard, and in the sedans, a centre lap sash seat belt in the rear.

And for the first time in an Australian built car, the life saving technology of Holden's uniquely



Smoother, electronic automatic transmission is standard on Acclaim.

The Holden Commodore automatic wagon really carries the day with its generous amount of space and increased towing capacity up to 2100kg. That's over 2 tonnes, a 30% increase.

It also drives better and smoother, with its ample power and refined 4 speed electronic automatic transmission, offered on the Commodore wagon and sedan. But don't let its good looks deceive you.

The Commodore is loaded with practical features.

There's even room for the kitchen sink, with class leading width between the wheel arches. Combined with the tailgate style it allows the Commodore wagon to take the single biggest rectangular object in its class.

The Commodore wagon can also be converted into a genuine '8 seater'.

The Holden Plus 2 accessory accommodates 2 extra kids in the rear.

And in the front, a bench/bucket is available in combination with a 4 speed electronic auto column shift.

The wider track allows for greater



THE WAGON WITH REAL SPACE AND HORSEPOWER.

stability on bends and corners, while a 5-link coil spring suspension smooths out the bumps.

With its 3.8 litres of V6 power and 5 speed manual gearbox the Commodore wagon makes molehills out of mountains. There's also the availability of 2 gutsy

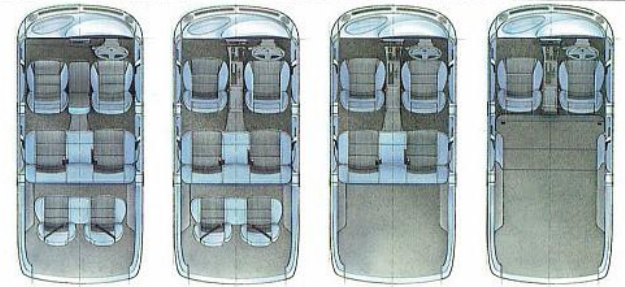
Holden V8s, Anti-lock Braking, Cruise Control and the Holden Airbag.

Both the V6 and V8 Commodore wagons incorporate a smoother, optional 4 speed electronic automatic transmission, making gear shifts almost undetectable.

Versatility is another feature

of the transmission, with a choice of power and economy modes.

The power mode, in particular, is ideal for towing and makes the automatic gearbox more responsive whilst the economy mode conserves fuel around town.



Seating configurations to suit any occasion.

Made to load up.

THE FINAL CONQUEST OF SPACE.



**Optional SRS Airbag fitted.*

Australia has a vast interior and so does the Holden Commodore.

The Commodore's expansive interior dimensions allow you to sit down and really stretch out, so long distances can be consumed effortlessly, with the minimum of fatigue.

While passengers are accommodated generously, drivers are spoiled with the smooth, flowing lines of the

all new wrap around dash, giving improved ventilation and an instrument panel that caters to almost every need.

Everyone may be talking about ergonomics and function, but the Holden Commodore provides a brilliant, practical demonstration with a tilt/telescopic steering column.

Not just an ordinary adjustment that tilts at the head of the column,

but one that tilts from a point at floor level, so that the steering wheel is maintained at a similar angle to the driver.

If that isn't enough to find the perfect driving position, the Holden Commodore also includes a vertical seat adjustment for total driver comfort. Nothing has been overlooked in the interior design of the Commodore.

As a quick look shows.

Everything is at your fingertips with improved instrumentation. Most switches are conveniently located on stalks, either side of the steering column.

For example, all wiper control functions for front and rear wipers, including intermittent, are located in a single stalk on the left hand side.

While the Cruise Control switches are on the end of the turn signal stalk.

So your eyes don't have to leave the road and search for switches, all lamp controls, headlamp, park and dome are nestled together on the dash fascia.

It's also comforting to know the front seat cushions provide even more support with body

hugging contours.

Finally, the stylish look of the interior is complemented by the sporty four spoke steering wheel with the availability of an Airbag and a three spoke wheel, standard on Executive and Berlina.

The Holden Commodore. With so much space, it's light years ahead.



A security system designed to baffle and deter even the most determined thief.



In power mode, the driver now has later upshifts for more engine power.



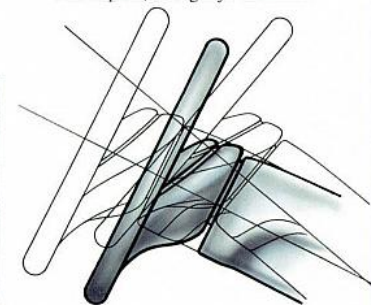
Electronics have created a revolution in transmission technology.



Instant relief from extreme heat from a powerful air conditioning system.



The convenience of a seat pocket for maps and magazines.



Tilt/Telescopic steering column allows every driver to find the perfect driving position.

DON'T DRIVE PAST THESE LITTLE LUXURIES.



For a little extra you can enjoy a lot of extra luxuries in a Holden Commodore Berlina.

They're immediately obvious, from the inviting, rich velour seat trim, to the superb sound system with a CD input jack, which provides a sound definition from the large speakers that music lovers will applaud.

First impressions are enhanced by the stylish, big alloy wheels and

subtle body side mouldings.

The level of sophistication continues the moment you enter the car and are welcomed by beautifully contoured seats, designed for long distances only Australians can appreciate.

Once you're comfortable, which will just take a second or two, you'll have time to admire the sweeping interior and superb appointments

that make driving the Holden Commodore Berlina a pleasure.

Like the Climate Control System which won't lose its cool unlike some Europeans, trying to cope with the extremes of the Australian climate.

It's also refreshing to know the Climate Control System doesn't rely on ozone depleting CFC gases.

Another thoughtful feature that makes motoring down the highway

a breeze is Cruise Control, conveniently located at your fingertips.

Other creature comforts that put the Berlina in a class of its own include power windows front and rear, a power antenna, standard 4 speed electronic automatic transmission, a comprehensive trip computer and alarm.

Each key, which has the power of a small microprocessor,

is programmed with the owner's personal computer security/alarm code. The central body computer is not only security conscious, it's thoughtful.

For example, the moment the remote key unlocks the doors and boot, the interior light comes on, perfect where there's no street light.

If you don't deserve the luxury of a Holden Berlina, who does?



The luxurious interior is enhanced with rich, velour seat trim.



Comprehensive trip computer calculates everything from average speed to distance to empty.



Set the Cruise Control, sit back and enjoy the open road. (On automatic transmissions only)



Power windows for both driver and passengers.



For summer or winter comfort, one of the country's most effective and environmentally friendly Climate Control systems with twin rear ducts as standard.



If you want show and go, don't go past the Holden Commodore S.

With its powerful V6 engine and five speed gear box, hardly anyone

engine to deliver, you'll appreciate the increased compression ratio, up to 9:1, which translates into a real lift in power.

All this, and still one of the best engine warranties in the country.

sporty alloy wheels with radials all round.

Inside there's a tachometer to keep in touch with your V6 and an electronic cruise control, standard on the automatic for when you're

turbine style, 7" wide alloy wheels, matched with high performance rubber, that literally invite you to push them right to the speed limit.

From the front, the Commodore SS looks like it means business with



The hot looks aren't restricted to the outside. Inside the SS is all style, with its new sports trim.



FOR THOSE WHO ENJOY POWER.

else will go past you on the road.

Put the big V6 through its paces. It's not only gutsy, it's tougher than ever with stronger conrods, which were actually developed by General Motors for a supercharged engine in the U.S.A., so it's built to last.

And when you do ask the

To match its impressive performance, power discs are fitted all round that'll cope with just about any emergency.

But since the Holden Commodore S is a car you really want to straighten corners with, it's fitted with Holden's FE2 suspension and

humming along the open road.

You'll hum to the high fidelity sound system that literally fills the interior with music.

On the outside, the red grille inserts will turn heads as will the red bodyside mouldings.

If you want a real position of power, get behind the wheel of a Holden Commodore SS. One thing SS doesn't mean is Standing Still.

Holden's racing heritage is written all over it. And that's not just the special graphics on the side of this sports saloon.

It starts right at the ground level, with its own individual 5 spoke,



AND THOSE WHO LIKE TO FLAUNT IT.

a bumper that extends down to create an air dam. While the leading edges of the grille are distinctive 'fast' red.

Nestled in the air dam are a stylish pair of fog lamps - the perfect functional sports touch.

But to really get down to business, lift the bonnet and admire the formidable V8 engine.

Its 165kW demands respect, while the 185kW V8 option delivers all the extra grunt you're likely to need, especially when towing.

As you would expect from a quality saloon with such enhanced performance, Anti-lock Braking and Independent Rear Suspension

are standard on the Commodore SS.

Which means the wheels stay in constant contact with the road, so all the power gets to the ground. A fact that will leave a lot of big European reputations struggling to keep up.

The SS also gets its share of good looks with a rear body colour decor panel and a wing spoiler that looks like you're flying when you're idling.

Inside, the attention to detail continues with seats that provide all the necessary support and comfort, even on the tightest hairpin corner.

There's also the availability of a driver's side Airbag on both the S and SS models.

What final point needs to be made about the exciting and stylish Holden Commodore SS?

Only that, point to point, it takes an awful lot of beating.



A big six with high torque for rapid acceleration, yet slow engine speeds while cruising.



A choice of two big V8's that literally eat up the kilometres, while delivering heaps of grunt.



Unique sporty alloys are standard on the SS.

A SECURITY SYSTEM THAT LEADS THE WORLD.

lock/unlock control is now contained in the head of the ignition key, no longer making it a two piece security system, and is powered by a 5 year lithium battery.

And the system is waterproof.

Each owner has their electronic

code. But the key does not stay with the code it is given on day one.

Each time the power key is used the code changes.

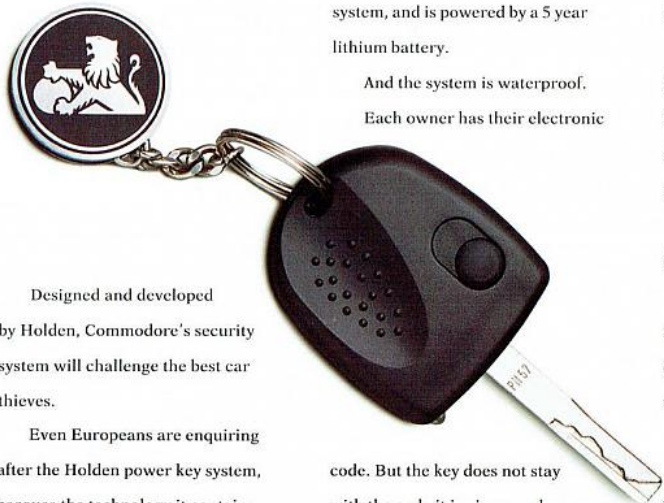
So if a waiting thief records a code and re-transmits it when you are away, it's already out of date and fails.

The code unlocks the power door locks, turns on the interior lighting, activates the ignition circuits, mobilises the car and disarms the alarm where standard.

All before you reach for the door handle.

The new VR Commodore also memorises the last code, so if the car has a flat battery, the anti-theft unit never forgets that code.

And thanks to the coded communication between the ignition key and the engine control module, hot wiring is now just an unpleasant memory.



Designed and developed by Holden, Commodore's security system will challenge the best car thieves.

Even Europeans are enquiring after the Holden power key system, because the technology it contains leads the world.

For starters, the remote door

ONE STEP AHEAD WITH THE SMARTEST FINANCE OPTIONS.

Among Commodore's many luxuries is a new and very smart one. The luxury of choice with finance as well. Now you can choose smart, factory-backed finance that can be tailored exactly to your needs. For example, Holden's SMARTDRIVE

**HOLDEN
SMARTDRIVE
FINANCE BY GMAC**

Lease Plan from General Motors Acceptance Corporation A.R.B.N. 007 480 382 offers approved buyers a smart way to save money.

With SMARTDRIVE you only pay for the years that you drive your new Commodore, instead of being obliged to pay for the whole vehicle. There's no deposit, payments are less during the term and a maintenance option is available. Ownership remains with GMAC at all times. When you return your Commodore to your Holden Dealer at the end of the lease term you have no obligations, other than excess charges that may apply.

With SMARTBUY, approved buyers can enjoy flexible payment terms tailored to meet your needs.

At the end of your SMARTBUY

**HOLDEN
SMARTBUY
FINANCE BY GMAC**

contract you have three choices.

You can pay out your final balloon payment, re-finance this amount (subject to credit approval at the time and the current terms and conditions.) or simply return your Commodore to GMAC, via your Holden Dealer, with a disposal fee of \$350, plus excess charges which may apply.

Your Holden Dealer has all the details.

SOME OF THE BEST WARRANTIES IN THE COUNTRY.



**2 Year or 50,000km
New Vehicle Warranty.**

Like all Holden's passenger and commercial vehicles, every new Holden Commodore is now covered by a 2 Year or 50,000km Warranty whichever comes first.

So peace of mind is now standard with every new Holden Commodore.

**3 Year or 100,000km
Powertrain Warranty.**

To give you even more protection and added security, your New Commodore will also be covered by a 3 Year or 100,000km (whichever comes first) Powertrain Warranty on the engine, transmission, clutch, axles and safety restraints.

**3 Year/24 Hour HoldenWise
Roadside Service.**

HoldenWise Roadside Service covers you in your driveway or on the road, as far as you can drive, all day, all night, on weekends, in fact, the whole year through.

You are covered for 3 years complimentary service, so in case of an emergency, you simply phone our central HoldenWise 24 hour toll free number 008 817 100.

It's all part of Holden's commitment to offering you the best motor vehicles and customer care in Australia.



HNL

Many other fleet companies

have the use or support of a dealer network. But Holden Dealers have put their money where their mouth is by investing in their own fleet leasing company.

By dealing direct, Holden National Leasing is best placed to offer the most flexible fleet financing deals available for new Commodores and other Holden products.

HNL can even build Commodores to your specifications (to approved fleets only).

What's more, your fleet can be delivered through any one of over 350 Holden Dealerships nationwide.

Unlike other fleet companies, you get to choose.

Most importantly, wherever you do choose to go, all service and maintenance work is charged to HNL at pre-negotiated rates.

They would gladly welcome a chance to submit a proposition for your consideration.

So if you'd like to deal direct and cut out the middleman, consult your Holden Dealer or contact Holden National Leasing toll free on 008 226 772.

GMAC

Factory backed finance

from General Motors Acceptance Corporation can be tailored to suit the individual needs of the buyer.

HOLDEN  SPECIAL VEHICLES

At HSV, through various aesthetic and engineering modifications, Commodore's world class design is enhanced to build some rather special vehicles, as their name suggests.

It's an organisation dedicated to producing, in very limited numbers, a range of Holdens with an indelible sporting character.

HOLDEN WISE

When it comes to properly maintaining your Holden, you have the technical expertise and convenience of HoldenWise service at your nearest Holden Dealer.

So when it comes to servicing your new Commodore, it pays to be HoldenWise.

At participating Holden Dealers, they offer the assurance of dealer fixed prices on scheduled services, so you can plan your routine maintenance costs.

And with extensively trained technicians they stand behind their workmanship with a 6 month/10,000km Warranty.

Naturally when fitted by a dealer, there's also a Holden Parts Warranty of 2 years or 50,000km.

With HoldenWise, you're always in safe hands.



COMMODORE'S PERFECT FINISH.

Commodore's bold, smooth-flowing styling now reflects even greater quality with a special high gloss enamel finish, the equal of any car in the world. The technology of Holden's new \$150 million paint system is the most modern in Australia.



ALASKAN WHITE



STRATOS BLUE



KIRA AQUA



DIABLO RED



TORQUAY BLUE



SHERBROOKE GREEN



SATIN GOLD



GENESIS BLUE



MASAI RED



SILVER ICE



GENESIS BLUE



HERMITAGE GREY

This colour chart illustrates the exterior colours. As these are printed colours and not actual paint samples, variations between those illustrated and actual paint colours may occur. See your local Holden Dealer for colour and trim combinations.

Automatic application ensures consistent depth and finish.

A polyester basecoat and acrylic clear coat make Commodore glisten with an extraordinary lustre and sheer depth of colour.

PERSONALISE YOUR COMMODORE WITH HOLDEN ACCESSORIES.

No other Australian built car says so much about you as the new Holden VR Commodore. It says you have style, a concern for safe motoring and a desire for real space and comfort.

But if you really want to stamp your personality on a new Commodore, consider the great range of Holden Accessories.

No matter which accessory you choose, it will reflect your individual flair and driving needs. It also reflects your desire for quality. Each accessory has been developed to complement your new VR Commodore and is manufactured to the highest engineering standards. And they are all covered by Holden's 2 Year or 50,000km Dealer Fitted Parts and Accessories Warranty.

What's more, particularly with towing accessories they meet stringent Australian Design Rule standards.

So, arrange for accessories to be fitted as part of your personalised Commodore package.



Holden Tow Bars specifically for Commodore have towing capacities up to 2100kg.



Hood and headlamp guards prevent stone chips and stop headlamp damage.



Venetian shades for sedan and wagon to reduce glare and heat.



Front and rear styled mudflaps protect paintwork and reduces spray to following vehicles.



Weatherstripping for driver and passenger doors keeps rain out and reduces wind in the cabin.



"Plus 2" seat for kids up to 8 years.

VR COMMODORE SPECIFICATIONS

	V6	V8	185kW V8
Engine:	"V" configuration, OHV design with cross flow cylinder heads. Multipoint, grouped fuel-injection. Engine Control Module, or Powertrain Control Module (with auto trans). Computer diagnostics. 91 octane fuel.		
	Low friction technology. High energy distributorless, ignition fired by magnetic pulse from crankshaft, via computer. Triple coils. Electric cooling fan.	Breakerless high energy electronic ignition system	Large air intake. High flow air cleaner. Extractor, and low-restriction dual exhaust. Recalibrated engine management. Knock sensor.
Bore (mm):	97	102	
Stroke (mm):	86	77	
Capacity (cm ³):	3791	4987	
Compression Ratio:	8.5:1	8.4:1	
Power Din (kW):	130@4800 rpm	165@4400	185@4600
Torque Din (Nm):	295@3200 rpm	385@3600	400@3800
Transmission Ratios:	5-Speed Manual: First: 3.25 Second: 1.99 Third: 1.29 Fourth: 1.00 Fifth: 0.72 4-Speed auto: First: 3.06 Second: 1.63 Third: 1.00 Fourth: 0.70	First: 2.95 Second: 1.94 Third: 1.34 Fourth: 1.00 Fifth: 0.73	
Driver:	Rear, through hypoid differential. Ratio 3.08:1		
Fuel Economy: (litres/100km)*	Executive Sedan & Wagon. 5-Speed manual: City cycle: 11.0 (26mpg) Hwy cycle: 7.0 (40mpg) 4-Speed auto: City cycle: 12.0 (24mpg) Hwy cycle: 7.6 (37mpg)	Executive Sedan & Wagon. 5-Speed manual: City cycle: 14.0 (20mpg) Hwy cycle: 8.5 (33mpg) 4-Speed auto: City cycle: 15.0 (19mpg) Hwy cycle: 9.0 (31mpg) Hwy cycle wag: 9.5 (30mpg)	
Fuel tank Capacity (litres)	Sedan: 63 Wagon: 68	Sedan: 80 Wagon: 68	
Brakes:	Four wheel disc. Heavy duty system with larger, ventilated front disc and finned caliper. Anti-lock Braking System (ABS) (Avail: see feature list). When wheel speed sensors and computer detect imminent lock-up, brake cylinder pressure is adjusted front & rear to prevent braking skid.		

	V6	V8	185kW V8
Suspension	5-link suspension: Front: MacPherson Strut, incorporating wet sleeve shock absorbers. Direct acting stabiliser bar. Progressive rate coil springs. Rear: Trailing arm with 5-link location. Panhard rod. Progressive rate coil springs. Double acting shock absorbers. Stabiliser bar. Country Pack: (Avail: 5-link, excluding Sports). Front: Revised spring and shock absorber rate. Revised stabiliser bar diameter. Increased ground clearance. Engine sump guard. Rear: Revised spring rate. Larger shock absorbers. Revised stabiliser bar diameter. Increased ground clearance. Fuel tank guard. Independent Rear Suspension (IRS), sedan: (Avail: see feature list). Independent, semi-trailing arm. Progressive rate miniblock coil springs. Double-acting shock absorbers. Stabiliser bar. Sports Suspension sedan or wagon: (Avail: 5-link or IRS, excluding Country Pack. See feature list). Front: Firmer spring rate. Revised stabiliser bar diameter. Reduced ride height. Rear: Firmer spring rate. Revised stabiliser bar diameter. Gas pressure shock absorbers.		
Steering	Variable ratio rack and pinion. Power assisted with variable assist.		
Track (mm)	Sedan: Front & Rear: 1491 Wagon: Front/Rear: 1491/1478		
Turn Circle (kerb/kerb, m)	Sedan: 11.0 Wagon: 11.1		
Wheelbase (mm)	Sedan: 2731 Wagon: 2822		
Wheels & Tyres	Executive: 6.00Jx15 & P205/65 R15 95H		
Dimensions (mm)	Executive:	Length	Width
	Sedan:	4861	1794
	Wagon:	4903	1794
Ground Clearance (mm)	143		
Towing Capacity (kg)	Holden approved 1200kg, 1500kg & 2100kg towing equipment is available. See your Holden Dealer for details.		
Luggage Capacity (litres)	Sedan: 443 Wagon: 2491 (Rear seat folded down).		
Kerb Weight (Est, kg)	Executive sedan: 1462 Executive wagon: 1398		
Routine Service Intervals (km)	1500km, 10,000km, then every 10,000km or 6 months, whichever comes first.		

A word about this catalogue. We have tried to make this catalogue as comprehensive and factual as possible. However, since the time of printing some of the information you'll find here may have been updated. Also, some of the equipment shown or described through this catalogue may have been changed and/or is available at extra cost. And the right is reserved to make changes at anytime without notice, in prices, colours, materials, equipment and models. Your Holden Dealer has details, and before ordering, you should ask him to bring you up to date. No Holden Dealer or other person is authorised or permitted to give or make any statement, assertion or undertaking in relation to the quality, performance characteristics, descriptions or fitness for any purpose of any Holden product which is at variance with any written statement, assertion or undertaking on any of these subjects given or made by General Motors-Holden's Automotive Ltd. A.C.N. 006 893 232 or General Motors-Holden's Sales Pty. Ltd. A.C.N. 004 668 831 in its published sales literature, and neither company accepts any liability for any such unauthorised action. General Motors-Holden's Automotive Ltd and General Motors-Holden's Sales Pty. Ltd. have franchised dealers in many parts of Australia for the sale of service parts and the provision of service to owners of Holden's products. Every endeavour is made to ensure that such dealers carry adequate stocks of service parts, but neither General Motors-Holden's Automotive Ltd. nor General Motors-Holden's Sales Pty. Ltd. makes any promise other than that contained in the New Vehicle Warranty given by General Motors-Holden's Automotive Ltd. that such parts or service facilities will be available at any specific location or at any particular time. *Fuel consumption figures based on AS 2877 tests. These figures are provided to assist you in comparing the fuel consumption of Commodore with other vehicles. The actual fuel consumption will depend, however, on many factors, including your driving habits, the prevailing conditions and your vehicle's equipment, condition and use. Copyright General Motors-Holden's Automotive Limited. Printed by: Incolour Printing Pty. Ltd., 195 Chesterville Road, Moorabbin, Vic. 3189, March 1994, AD10508.



Recycled

YOUR COMMODORE IN DETAIL.

S=Standard Feature A=Dealer Fitted Accessory

	Sedans					Wagons		
	Exec	Acclaim	'S'	'SS'	Berlina	Exec	Acclaim	Berlina
Powertrain								
3.8 litre V6 engine	S	S	S		S	S	S	S
5 litre 165kW V8 engine				S				
Multipoint fuel-injection & engine management computer	S	S	S	S	S	S	S	S
5-speed manual transmission	S		S	S		S		
4-speed electronic control auto, with overdrive & lock-up torque converter		S			S		S	S
-power or economy mode		S			S		S	S
Limited slip differential					S			
Long range fuel tank					S			
Mechanical								
Power steering, rack & pinion	S	S	S	S	S	S	S	S
Stabiliser bars front & rear	S	S	S	S	S	S	S	S
Coil springs front & rear	S	S	S	S	S	S	S	S
Independent Rear Suspension (IRS)	S			S				
FE2 Sports suspension tuning (Includes gas pressure rear shock absorbers)			S	S				
Four-wheel power disc brakes	S	S	S	S	S	S	S	S
Anti-lock Braking System (ABS)		S		S		S		
Engine hood gas strut assist	S	S	S	S	S	S	S	S
Wheels								
Steel wheels, 6.00x15 & P205/65 R15 95H tyres	S	S			S	S		
Alloy wheels, 6.00x15 & P205/65 R15 95H tyres			S				S	
Alloy wheels, 7.00x15 & P205/65 R15 95H tyres				S				
Full wheel covers	S	S			S	S		
Exterior								
Grille in body color	S	S			S	S	S	S
Grille black inserts with red leading edge			S	S				
Bumpers in body color	S	S	S	S	S	S	S	S
Front bumper air dam			S	S				
Exterior mirrors in body color		S	S	S	S	S	S	S
Bodyside mouldings (Berlina with chrome)	S	S	S	S	S	S	S	S
Side skirts			S	S				
Decklid spoiler, wing type, with high-mounted stop lamp				S				
Twinn exhaust outlets				S				
Chromed exhaust outlet styling	A	A	A		S	A	A	S
Formula styling pack. Includes: side skirts, rear spoiler, formula decals	A	A			A			
License plate frames	A	A	A	A	A	A	A	A
Driver								
Supplemental Restraint System - driver Airbag		S				S		
Steering wheel height telescopic adjust (fitted with bucket seats)	S	S	S	S	S	S	S	S
Three spoke soft feel steering wheel	S				S	S		S
Four spoke soft feel steering wheel		S	S	S		S		
Illuminated ignition	S	S	S	S	S	S	S	S
Remote boot release lever	S	S	S	S				
-electric operation					S			
Remote electric tailgate lock/unlock					S	S	S	
Remote fuel door release	S	S	S	S	S	S	S	S
Remote exterior mirrors, power	S	S	S	S	S	S	S	S
Intermittent windscreen wipers	S	S	S	S	S	S	S	S
-variable intermittent, road speed sensitive					S			
Tailgate window wiper/washer					S	S	S	
Electric rear window demister	S	S	S	S	S	S	S	S
-auto-off timer					S			
Electronic cruise control (Fitted only on auto transmission)	A	S	S	S	S	A	S	S
Digital clock, in radio	S	S	S	S	S	S	S	S
Headlamps auto-off	S	S	S	S	S	S	S	S
-programmable auto off delay					S			

	Sedans					Wagons		
	Exec	Acclaim	'S'	'SS'	Berlina	Exec	Acclaim	Berlina
Fog lamps				S				S
Trip computer including: odometer, trip distance, speed warning (setting adjustable), instantaneous fuel consumption, distance to empty, average speed, average fuel consumption, elapsed trip time, fuel used, calibration (fuel & distance)					S			
Tachometer	S	S	S	S	S	S	S	S
Variable instrument dimming					S			S
Warning lamps include: oil pressure, alternator, check engine, brake failure, parking brake 'on'	S	S	S	S	S	S	S	S
-rear demister on	S	S	S	S	S	S	S	S
-fog lamps on				S				
Lamp & chime warning for: parking brake 'on', vehicle over speed, engine temperature, low fuel					S			S
Body computer, for co-ordination of electrics, with self diagnosis	S	S	S	S	S	S	S	S
Holden dealer "Tech 1" diagnosis of all major electronic control systems.	S	S	S	S	S	S	S	S
Sound System								
AM/FM stereo electronic tune radio with local/distant selector switch, automatic station store memory, cassette player with auto reverse, four twin cone speakers, total 30 Watts.	S	S	S	S	S	S	S	S
Dolby noise reduction, separate bass & treble controls, music search, metal tape equalisation, front/rear fader control.		S	S	S	S		S	S
Compact disc input socket		S	S	S	S		S	S
Compact disc player	A	A	A	A	A	A	A	A
Power antenna, auto, full up/down	A	A	A	A	A	A	A	A
Power antenna, auto with height adjust					S			S
Driver adjustable pre-setting for variable height, auto retract with remote control key					S			S
Seating								
Woven cloth	S	S	S	S		S	S	
-sports design			S	S				
Seat trim in velour					S			S
Sheepskin bucket seat covers	A	A	A	A	A	A	A	A
Bucket seats	S	S	S	S	S	S	S	S
-extra support in seat cushion				S	S			S
High rise centre console armrest	S	S	S	S	S	S	S	S
Front seat headrests, padded, with height adjust	S	S	S	S	S	S	S	S
Driver's seat height adjustable, and left footrest adjustable	S	S	S	S	S	S	S	S
Driver's seat adjustable lumbar support	S	S	S	S	S	S	S	S
Passenger seat lumbar support					S			S
Front lap sash seat belts with webbing clamps	S	S	S	S	S	S	S	S
Rear centre seat lap sash belt	S	S	S	S	S			
Folding 3rd row "Plus 2" seat						A	A	A
Rear seat centre fold-away tray	S	S	S	S	S			
Rear seat bolster headrests				S	S			
Rear seat centre armrest					S			
Children								
Child seat anchor points	S	S	S	S	S	S	S	S
Childproof rear door locks	S	S	S	S	S	S	S	S
Power window override switch					S			S
Cabin Comfort								
Electric sunroof	A	A	A	A	A	A	A	A
Air conditioning	A	A	A	A	A	A	A	A
Electronic Climate Control (air-conditioning) with auto/manual mode					S			S
Rear outlet vents					S			S
Power windows front & rear					S			S
-express down driver's window & time delay					S			S
-power supply 'on/off' when unlocking/locking with remote control key					S			S
Front cigarette lighter, illuminated	S	S	S	S	S	S	S	S
Vanity mirror on passenger side		S			S			S
Centre dome lamp, time delay on entry	S	S	S	S	S	S	S	S

	Sedans					Wagons		
	Exec	Acclaim	'S'	'SS'	Berlina	Exec	Acclaim	Berlina
-instant 'on/off' when unlocking or locking with remote control key	S	S	S	S	S	S	S	S
-auto 'off' after 2 hours					S			S
Front reading lamps					S			S
Rear reading lamps					S			S
Front footwell lamps					S			S
Carpet cut pile	S	S	S	S	S	S	S	S
Carpet floor mats, standard or deluxe	A	A	A	A	A	A	A	A
Padded fabric insert on door trim	S	S	S	S	S	S	S	S
Carpet on lower doors	S	S	S	S	S	S	S	S
Passenger overhead assist handles, folding front & rear	S	S	S	S	S	S	S	S
Windscreen sunshade, front	A	A	A	A	A	A	A	A
Weathershield, driver & front passenger window in standard width or slimline	A	A	A	A	A	A	A	A
-rear windows, slimline	A	A	A	A	A	A	A	A
Venetian shades, side windows	A	A	A	A	A	A	A	A
Venetian shades, rear window	A	A	A	A	A	A	A	A
Rear sunguard	A	A	A	A	A			
Rear louvre	A	A	A	A	A			
Tailgate dust deflector						A	A	A
Storage, Cargo, Towing								
Glove box with lamp	S	S	S	S	S	S	S	S
Centre console compartment, with carpet	S	S	S	S	S	S	S	S
Front door storage bins, full length	S	S	S	S	S	S	S	S
Storage pocket rear of driver & passenger seats	S	S	S	S	S	S	S	S
Rear seat centre access to boot	S	S	S	S	S			
Fold-down rear seatback						S	S	S
Decklid, or wagon tailgate gas strut assist	S	S	S	S	S	S	S	S
Carpeted boot floor & spare wheel	S	S	S	S	S			
Carpeted cargo area						S	S	S
Cargo cover						A	A	A
Lamp in boot, or wagon cargo area	S	S	S	S	S	S	S	S
Carry rack	A	A	A	A	A			
Roof rack, gutter mounted	A	A	A	A	A			
Aero style roof luggage rack						A	A	S
Towing equipment: (see specifications)	A	A	A	A	A	A	A	A
Protection								
Key-operated deadlocks	S	S	S	S	S	S	S	S
Remote control key with security code enables ignition	S	S	S	S	S	S	S	S
-arms/disarms alarm system					S			S
-operates power door locks	S	S	S	S	S	S	S	S
-opens boot					S			
-unlocks/locks tailgate					S	S	S	S
Ignition disabled automatically after engine switch-off	S	S	S	S	S	S	S	S
-flashing interior lamp shows vehicle is protected	S	S	S	S	S	S	S	S
Theft attempt memory, audible warning & report, including after battery disconnection						S		S
Locking glove box	S	S	S	S	S	S	S	S
Radio/cassette security electronics using PIN	S	S	S	S	S	S	S	S
Headlamp guards	A	A	A	A	A	A	A	A
Hood guard	A	A	A	A	A	A	A	A
Radiator insect screen	A	A	A	A	A	A	A	A
Mudflaps (flexible) front & rear	A	A	A	A	A	A	A	A
Full immersion body corrosion protection	S	S	S	S	S	S	S	S

See your Holden Dealer about: 5 litre 165kW V8 engine, 185kW V8 engine, 4-speed electronic control automatic transmission, 4-speed electronic control auto column shift, Air conditioning, Power antenna, auto, with height adjust, Electronic cruise control, Power windows, front and rear, Limited slip differential, Independent Rear Suspension, Sports suspension, Country Pack suspension, Anti-lock Braking System (ABS), Metallic paintwork, Supplemental Restraint System - driver Airbag, Bucket/bench seating system.



Holden Commodore



There's nothing quite like a Holden.

