



# THE ALL NEW MAHINDRA GENIO

NOW WITH IMPROVED EURO 5 COMPLIANT  
TURBO DIESEL ENGINE WITH LOWER CO<sub>2</sub>  
AND IMPROVED FUEL ECONOMY

Matthew Hayden  
Mahindra Brand Ambassador



**Mahindra**  
*GENIO*

**Mahindra**  
*Rise.*

# Driving Business Class

The new Mahindra Genio is our next step in redefining convenience and comfort in the commercial transport space.

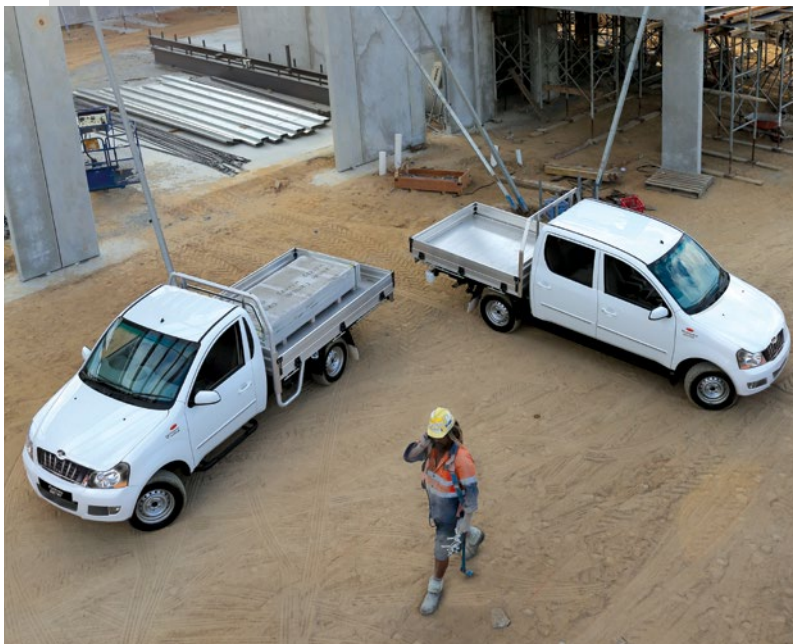
Born of ideas to take your business places, more than a modern transport solution, the aerodynamic bodied Genio delivers a payload up to 1.2 tonne (Single Cab 2WD).

Powered by the mHAWK turbo diesel engine, which is a joint development between Mahindra and Austrian diesel powertrain engineering specialists, AVL.

A product of modern engineering, this utility is filled with big ideas. Ideas that boast its efficiency and reliability, making it the perfect choice for businesses.

As well as ideas that make travelling in its spacious cabin, a truly business-class experience.

After all, tradesmen deserve business-class.



## Safety at work

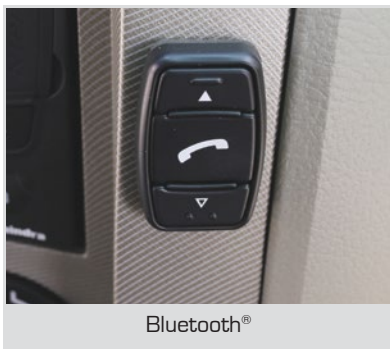
**ABS** - Anti-lock braking system (ABS) ensures that the wheels don't lock up on you for maximum grip on slippery surfaces.

**Driver & co-passenger front airbags** - In the event of a collision, these airbags inflate instantly, protecting you from serious injury.

**Immobiliser** - An encrypted key recognition system that rejects duplicated keys and cuts off fuel supply to the engine, preventing theft.

**Crumple zones** - Located at key points, they absorb most of the impact in case of collision. The unyielding steel bars in the doors minimise impact from the sides.

## Optional Accessories



## Standard Features

- Turbo Diesel engine
- Air conditioning
- Extra spacious cabin
- Electric windows and mirrors
- Power steering
- Tilttable steering
- Infinitely Variable Intermittent Wipers
- Drink holders & mobile charging
- 2-Din stereo with MP3/CD/SD/USB
- Stylish instrument cluster
- Semi-bucket seats with multi-adjust
- Ergonomic seating
- Rear demister
- Large map pockets
- Digital Drive Assist System (DDAS)  
(DDAS display on Dual Cab only, Single Cab displays clock)

## Space and Comfort

A plush interior designed for a premium feel for both driver and passengers alike.

With a car like ride and interior you will be surprised that it's actually a work ute.

A stylish instrument cluster with trip meter, DDAS (Dual Cab only) to help you stay updated on everything from current speed, temperature, humidity & fuel consumption.

2-DIN Audio System supporting MP3, CD, SD Cards and even USB Drives.










# CARRY UP TO 1.2 TONNE IN OUR 2.7 METRE (ALMOST 9FT) STANDARD TRAY

(Single Cab)

## FEATURES

<b>Technology</b> 	<ul style="list-style-type: none"> <li>• mHAWK diesel engine</li> <li>• Immobiliser</li> <li>• 2-DIN audio system with CD/MP3 player &amp; USB/SD Slot</li> </ul>	<ul style="list-style-type: none"> <li>• Cruise control</li> <li>• Audio control on steering wheel</li> <li>• Roll over mitigation</li> <li>• Diesel Start/Stop feature to reduce fuel usage at traffic lights</li> </ul>
<b>Safety</b> 	<ul style="list-style-type: none"> <li>• SRS Airbag (driver &amp; front passenger)</li> <li>• Side intrusion beams</li> <li>• Crash protection crumple zone &amp; child locks</li> <li>• Electronic Stability Control (ESC)</li> </ul>	<ul style="list-style-type: none"> <li>• Anti-lock Braking System (ABS)</li> <li>• Fire retardant upholstery</li> <li>• Collapsible steering column</li> <li>• Hill Hold &amp; Descent Control</li> </ul>
<b>Style</b> 	<ul style="list-style-type: none"> <li>• Modern front grille</li> <li>• New styled headlamps</li> <li>• Large drop side tray</li> </ul>	<ul style="list-style-type: none"> <li>• Aerodynamic Body</li> <li>• Front fog lamps</li> <li>• Bigger doors for easy entry &amp; exit</li> </ul>
<b>Comfort</b> 	<ul style="list-style-type: none"> <li>• Full fabric seats</li> <li>• Tiltable steering</li> <li>• Powered mirrors</li> <li>• Benchmark cabin interior space</li> </ul>	<ul style="list-style-type: none"> <li>• Centre armrest on 2nd row seats for double cab</li> <li>• Heating, ventilation &amp; 2 speed AC with rear vents</li> <li>• Front seat armrests</li> <li>• Higher riding position than standard ute</li> </ul>
<b>Convenience</b> 	<ul style="list-style-type: none"> <li>• Power steering</li> <li>• Central locking</li> <li>• Follow me home headlamps</li> <li>• Door handle integrated lock</li> </ul>	<ul style="list-style-type: none"> <li>• Power windows with anti-pinch smart window (driver)</li> <li>• Auto down/up on front windows (on driver's control)</li> <li>• Auto down on rear windows (Dual cab only)</li> <li>• Steel wheels with full size spare</li> </ul>



## Here's to taking the **HARD** out of **HARD WORK**

It's hard to beat value for money and it's hard to beat good quality for a price, but when you combine both in equal measure what you get is a package that is celebrated for its easy approach to work, with additional capability up its sleeve.

That's what you want in a work vehicle. A no-nonsense approach, that you can trust time and time again. That's Dependable. That's Honest.

That's truly capable of surprising you in its determination and its durability.

That's what you get with the new 2018 model year Mahindra Genio. A tough no nonsense work ute that you can trust, time and time again.

## Improved Safety on the Road



### **ELECTRONIC STABILITY CONTROL - ESC**

Provides controlled braking & power transmission in individual wheels. ESC detects if the driver is losing directional control and applies a combination of braking at some wheels and power at others to regain control.



### **HILL HOLD CONTROL**

Making it easy for the driver to go uphill by applying brakes for 2-3 secs before driver takes control of accelerator.



### **HILL DESCENT CONTROL**

Vehicle will descend at a pre-determined speed from the hill using intelligent hill descent control.



### **ROLL OVER MITIGATION**

Minimises head toss and body roll keeping the vehicle stable on the road.

White

### Genio Colours

The Genio range is available in 3 colours. White, Silver and Black.

### Engine

Type	mHAWK, CRDe, DOHC, 16v, VGT
Cubic Capacity	2179 CC
Max Gross Power	120bhp (88kW) @ 4000 RPM
Max Gross Torque	280Nm @ 1800 - 2800 RPM
Gearbox	5 Speed manual
Tyres	215/70 R15
Fuel tank	74 litres



### Suspension

Front	Independent, coil springs, double wishbone type
Rear	Progressively rated multi leaf spring & double acting shock absorber

### Brakes

Front	Disc and caliper type
Rear	Drum type
Turning circle radius	6.15m

### Dimensions (mm)

Wheel base	3200
Overall width	1850
Overall length	5185
Overall height	1890

### Weight & Payload (kg)

	Single Cab	Double Cab
Kerb weight	1720	1880
Payload	1260	1100
GVW	2980	2980

### Cargo Dimensions (mm)

	Single Cab	Double Cab
Length	2700	1950
Width	1777	1777
Height	490	490

Silver

Black

# Mahindra GENIO

### Dealer Details:

[www.mahindra.com.au](http://www.mahindra.com.au)

**Mahindra Automotive Australia, 4/20 Buttonwood Pl, Willawong Brisbane QLD 4110 Australia.  
Phone: (07) 3213 1211 Fax: (07) 3213 1215 Email: [info@mahindra.com.au](mailto:info@mahindra.com.au)**

• All features and colours mentioned are not available on all models at all times. • Accessories shown are not part of standard equipment. • Performance figures may differ in conditions other than test conditions. • Vehicle body colour may differ from the printed photographs. • In view of our policy of continuously improving our products, we reserve the right to alter specifications or designs without prior notice and without liability. • Please check model details with our nearest dealer. \*Vehicle tested in accordance with ADR81/02. Actual fuel consumption and CO<sub>2</sub> emission depend on factors such as traffic conditions, vehicle condition and how you drive. ^1.2 tonne payload for Single Cab 2WD Genio with standard light truck tyres at 60psi. Max GVM 2980 kgs for all models.