

WHY DRIVE
JUST A CAR,
WHEN YOU
CAN DRIVE
THE FUTURE
OF MOBILITY?



e20
Future of Mobility

THE FUTURE OF MOBILITY BEGINS HERE.

Welcome to the Mahindra e₂o. It is electric, automatic and can run on clean energy. It is very convenient to drive and is always connected to its user. Above all, it is clever and cost-effective. Explore further to know why the e₂o is the first step towards the Future of Mobility.



WHY JUST REDUCE EMISSION, WHY NOT ZERO EMISSION?

The electric technology that is used in the e₂o makes sure it runs on clean energy*, which in turn makes emissions obsolete. The Mahindra e₂o experience is a liberating one, may we say.

*When used on solar power from Sun₂Car technology



WHY CAN'T YOUR CAR THINK AND BE SMART?

With the Intelligent Energy Management System and 10 on-board computers, the Mahindra e₂o gives you real-time drive information for an exciting and safe journey. Its self diagnostics sends you alerts in case of any fault. The versatile Infotainment system offers a host of media options to choose from and helps you plan your daily trips.



WHY DOES YOUR CAR NEED FUEL TO RUN?

With e₂o, you are free from ever increasing fuel prices and pollution.
You can now safely bid goodbye to fuel pump queues too. Simply
refuel your Mahindra e₂o by plugging in at home or office.



WHY CAN'T YOUR CAR TALK TO YOU?

Wherever you are, you are always connected to your e₂o. Cooling, locking, unlocking and a whole lot of other things can be done with your smartphone* while you are at home or office. Moreover, with our unique patented REVive® technology, in case your e₂o is low on energy, you can use the app to activate a reserve charge that can get you going again. Experience convenience at your fingertips.

- ◉ Remote AC
- ◉ Lock-Unlock
- ◉ Locate nearest Charge Ports
- ◉ Plan your trip
- ◉ Car charge status
- ◉ Vacation mode

*Available on most Apple, Blackberry & Android smartphones



WHY CAN'T A DRIVE BE GREAT EVEN IN BUMPER TO BUMPER TRAFFIC?

The Mahindra e₂o comes with an automatic transmission, which means no gear, no clutch and no inconvenience even in the worst of traffic jams. Its small 3.9m turning radius makes every sharp turn a delight. With e₂o's unique 'Hill Hold' feature, you are free from any anxiety while going up on inclines. Just few endeavours to make sure that every drive of yours is an absolutely enjoyable one.

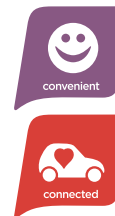
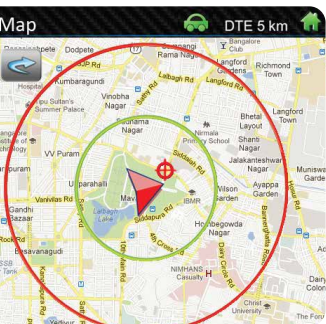


WHY CAN'T A CAR BE SMALL YET BIG ON FEATURES?

Way beyond stunning looks and eco-friendliness, a great balance of form and function gives you the Mahindra e₂o experience.

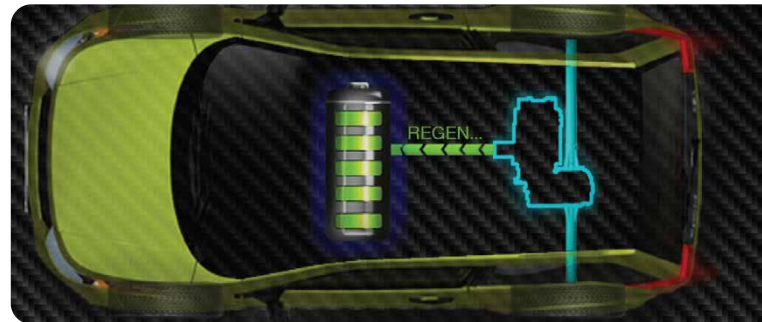
- ◉ Hill Hold
- ◉ Courtesy Lights
- ◉ Follow-me-home Headlamps
- ◉ Reverse Camera
- ◉ Digital User Manual
- ◉ GPS Navigation
- ◉ Integrated Maps
- ◉ Bluetooth
- ◉ iPod connectivity
- ◉ One-touch Foldable Seats
- ◉ Projector Headlamps
- ◉ LED Tail Lamps
- ◉ Scissor Wipers
- ◉ Rear Defogger
- ◉ Electric Wing Mirrors
- ◉ Keyless Entry & Start/Stop
- ◉ 4 JBL Speakers & 2 Tweeters
- ◉ Dual-damping Glove Box
- ◉ CD/DVD/USB/AUX/ MicroSD
- ◉ Smallest 3.9m Turning Radius
- ◉ 6.2" Touch Screen Infotainment System
- ◉ Your car's Personal Web Page
- ◉ Driver Information System

Also available in base model without Touchscreen Infotainment System and Reverse Camera.



WHY CAN'T YOUR CAR CHARGE ITSELF WHILE SLOWING DOWN?

With the advanced Regenerative Braking System, energy gets back into the battery while you slow down or brake. Which means you're actually saving power and recharging the batteries every time you brake. The Mahindra e₂o is as thoughtful about you, as it is about the environment.



WHY CAN'T YOUR CAR BE SILENT AND YET MAKE A STATEMENT?

You'll be pleasantly surprised to know that the Mahindra e₂o comes with no engine. Which means no noise and vibrations. We call this a 'Silent Revolution'. And you are driving it.



WHY CAN'T YOUR CAR BE SCRATCH AND DENT RESISTANT?

The Mahindra e₂o's special ABS body panel formulation ensures it is dent resistant. As the body is colour impregnated and not painted, the chances of it getting scratched are minimized.



WHY CAN'T EVERY DRIVE BE A SAFE ONE?

The Mahindra e₂o has been designed keeping 'safety first' in mind. It has a unique high strength steel space frame that cocoons you and your family. This, along with several advanced safety features make every drive a safe one.

- ◉ **3 Crumple Zones**
- ◉ **Side impact dual beams**
- ◉ **Gear Shift & Charge interlocks**
- ◉ **Immobilizer**
- ◉ **ISOFIX Child Seat mounts with ALR rear seat belts for added child safety**
- ◉ **6 Energy absorbing structures in the front**
- ◉ **Adjustable headrest on all seats**



WHY SHOULD YOUR CAR KEEP GOING TO THE SERVICE STATION?

How often have you complained about sending your car to the service station and then about the huge bills for oil & filter change? With daily heartbeat check through Mahindra Reva's remote & self diagnostics, the e₂o needs to be serviced only once a year and that too at your doorstep.



VEHICLE SPECIFICATION

Type	Two door hatchback
Seating Capacity	Four adults
Motor	3 Phase Induction Motor
Power	19 kW @ 3750 rpm
Torque	53 N-m @ [0-3400 rpm]
Battery	48V maintenance-free Lithium-ion
Steering Mechanism	Rack & Pinion
Transmission	Fully Automatic
Suspension: Front	MacPherson strut - Gas filled
Suspension: Rear	Gas filled shock absorber with coil springs
Brake: Front	Disc: 215 mm
Brake: Rear	Drum: 180mm
Tyre (Front & Rear)	155 / 70 R 13, Tubeless Low Resistance

DIMENSIONS

Length x Width x Height	3280 mm x 1514 mm x 1560 mm
Wheelbase	1958 mm
Ground Clearance	180 mm
Turning Radius	3.9 m
Kerb Weight	830 kg

BODY

Panels & Bumpers	Color Impregnated and Dent resistance body panel
Frame/Chassis	Welded Tubular structure & 3-crumple zones complying to European safety norms

PERFORMANCE

Top Speed	81 kmph
Range	100 km in one full charge under test conditions
Charging time	5 hours to full charge; 1 hr for 20 km range from a standard 220V 15 A socket

e₂ COLOURS



Arctic Silver



Coral Blue



Eco Green



Oceanic White



Spanish Red



Sunfire Yellow

KEY FEATURES IN THE e₂0

CLEAN

1. **Born Green** - Manufactured at India's 1st IGBC* platinum rated eco-friendly automobile facility in Bengaluru.
2. **No tailpipe emission** - No engine. No petrol. No combustion. No exhaust. Totally Pollution free.
3. **Regenerative braking** - Puts back energy in the Li-ion battery whenever you slow down or brake.
4. **Pre-coloured body panels** - Avoids painting of body panels and reduces pollution.

* Indian Green Building Council

CONVENIENT

1. **Automatic drive** - Fully automatic which makes driving in bumper to bumper traffic a breeze.
2. **Easy Home charging** - Charge at home using any 15 Ampere plug point.
3. **Driving range using GPS navigation** - Plan each trip smartly and know your driving range using GPS navigation system with 6.2" touchscreen.
4. **Home Service** - Once a year servicing and that too at your home. * *
5. **Hill Hold** - Prevents your e₂0 from rolling backwards on inclines.

**Conditions apply

CONNECTED

1. **Remote Lock/Unlock** - Use your smartphone to lock/unlock your e₂0 from anywhere.
2. **Remote AC operation** - Use smartphone to remotely start/stop and schedule AC for your daily routine.
3. **REVive®** - If you were to ever run out of charge, this patented technology remotely activates a reserve and lets you continue.
4. **Remote Diagnostics** - Know your vehicle performance. Receive sms & email if any fault is detected.
5. **Reva Apps Store** - Access to traffic updates, tweets, facebook updates and lots more.

CLEVER

1. **Regenerative Braking** - Reduce maintenance while putting back energy while you drive.
2. **Intelligent iEMS System** - 10 on-board computers monitor every part to ensure smooth functioning.
3. **Driver Information System** - Makes every drive informative and interesting.
4. **Safe Mode** - Activated to save power, if battery charge is less than 10%.
5. **Ready for the Future** - Charge from Solar energy (Sun₂Car).

COST EFFECTIVE

1. **Low running cost** - No petrol. No Diesel. Freedom from ever increasing prices of oil.
2. **Lithium Ion Batteries** - Next generation maintenance free batteries that give long range & life.
3. **High impact body panels** - Dent & scratch resistant body panels, ideal for congested traffic.
4. **Low maintenance** - No clutch. No gears. Minimum moving parts. Hence low maintenance.

Disclaimer: All features and colours mentioned are not available on all models • Colours and accessories shown in some images may not be available as standard specification • Performance figures may differ in conditions other than test conditions • Vehicle body colour may differ from the printed photographs • In view of our policy of continuously improving our products, we reserve the right to alter specifications or designs without prior notice or liability • Please check model details at your nearest dealer.



Mahindra *REVA*

For more information, call us at 1800 - 267 - 6000 or SMS 'e2o' to 5757577

Mahindra Reva Electric Vehicles Pvt. Ltd. Lakshmi Arcade, 484, 27th Main,

17th Cross, HSR layout, Sector II Bangalore 560 102, India.

www.mahindrae2o.com

 facebook.com/mahindrae2o

 twitter.com/mahindrae2o

 youtube.com/mahindrae2o

Mahindra
Rise.