

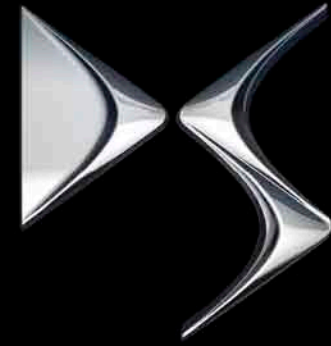
CITROËN DS4





CUSTOMERS TOLD US THEY WANTED
A DIFFERENT KIND OF CAR.

THOMAS D'HAUSSY
RANGE MANAGER



D S L I N E

IT STARTED WITH A BLANK PAGE.

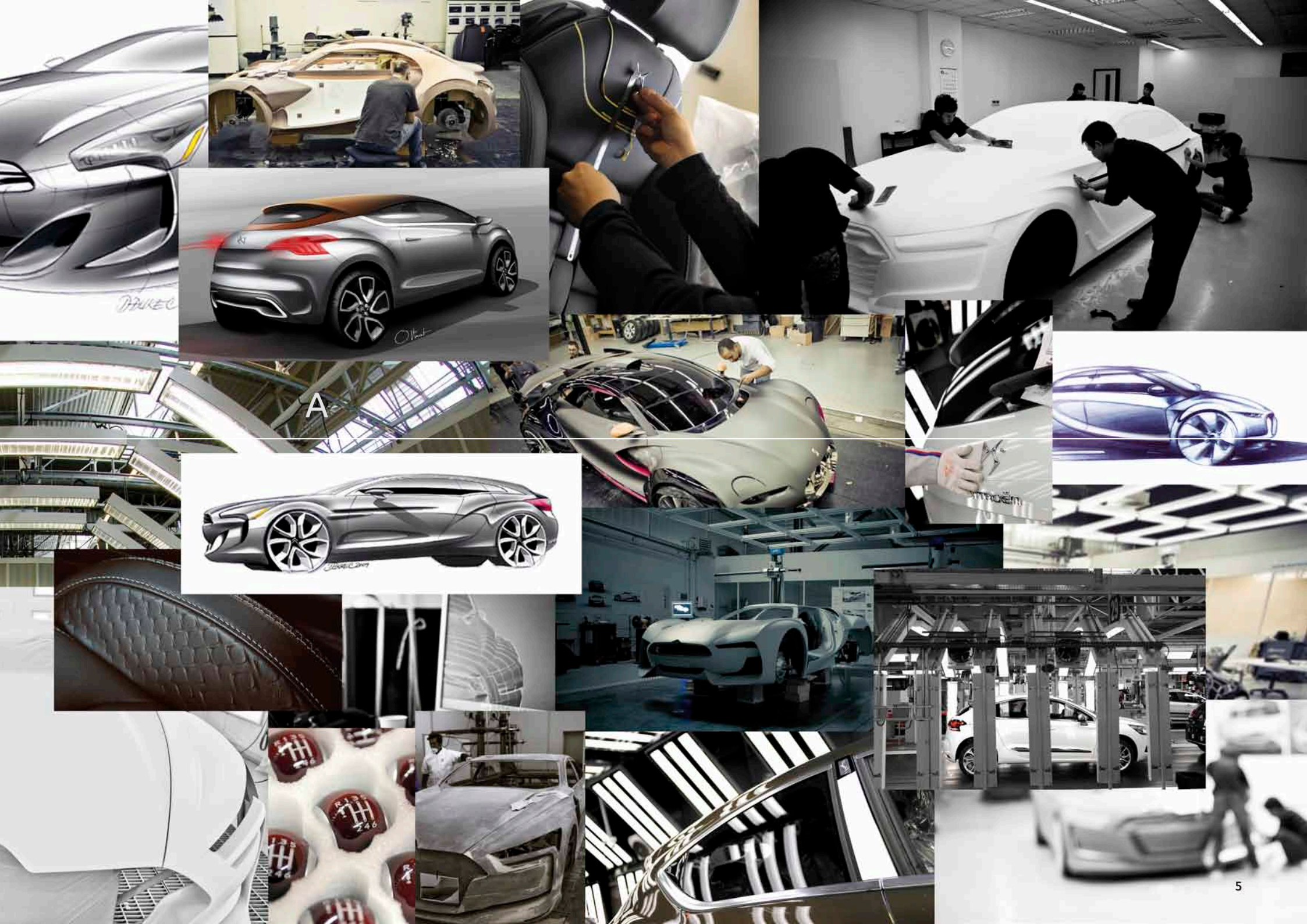
WITH A FEW PENCIL LINES ON THE PAPER,
I KNEW IT WAS GOING TO BE A BEAUTIFUL CAR.

OLIVIER VINCENT
DESIGNER



D

N





D E S I G N

A



OLIVIER VINCENT
EXTERIOR DESIGNER

UNIQUE



We really wanted to give it the look of an urban vehicle, able to tackle obstacles, but also agile.

The quarter lines are sharp and attractive.

Flowing lines around the windscreen.

An expressive front and an expressive rear.

The forms are pleasant to look and to touch.

We've really launched a unique vehicle. And on top of that it goes and wins Most Beautiful Car of the Year.

SEAN JOHNSON
INTERIOR DESIGNER

SPACE



It's not like a German car, it's not like an Italian car. It's unique. Typically French. It's like a coupé but still you've got all the space necessary for five occupants. Very spacious.

We've put a lot of attention into the detail and to the modelling to make it really feel quite sophisticated.

A great place to be. It's a car where you feel very involved. Cocooned. Very protected. It's a cockpit. It's a car that you really want to drive.

THOMAS LERET
COLOURS AND MATERIALS STYLIST

LUXURY



The aim with Citroën DS4 was to make a luxury object. We took inspiration from leatherwork, from haute couture, jewellery and clock making.

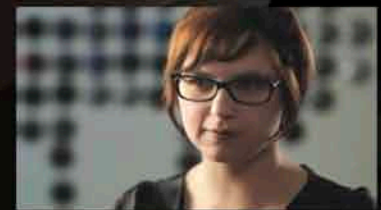
When you get inside, you really get a feeling of class, a sense of style. This car is a really unique object – you haven't seen anything like it before.

I think every designer deserves the chance to work on a project like Citroën DS4.



MAGALIE HALEY
COLOURS AND MATERIALS STYLIST

HARMONY



The design is very precise. Almost chiselled and plays with the light. The light slides over it. And in the matt parts, it's absorbed. It's about finding the colour in complete harmony with the interior.

When I open the door of Citroën DS4 the thing I'm most proud of is the refinement and luxury which is very present.

When I got out on the street I thought, 'Yep, this car is going to turn heads'. I think that was the idea, you know? I can really see myself driving it.

THOMAS D'HAUSSY
RANGE MANAGER

REFINEMENT



At project inception customers told us they wanted a different kind of car. The object has to be refined, each detail carefully worked.

We invented new mixes for the suspension. New approaches to springing and damping. The road is at your fingertips. You feel like you dominate the road. You feel like you're sitting high up, and protected by the body-hugging seats.

THIERRY METROZ
DESIGN DIRECTOR


POWER



It's true that Citroën DS4 is different, not something you've seen before. When you get into Citroën DS4 you get the real measure of all this refinement. I'm looking at the road, and I'm also looking into the door mirror just to see the side of the car.

You have the power of a coupé, exceptional body lines that make you want to take the wheel. And at the same time, we placed the emphasis on rear space, which is exceptional.





INNOVATION ALWAYS COMES FIRST. LIKE EVERY CAR IN THE DS LINEAGE, CITROËN DS4 STARTS WITH A SPARK OF INNOVATION. UNIQUELY NON CONFORMIST, IT MIXES URBAN PRESENCE WITH COUPÉ GRACE, LUXURIOUS QUALITY WITH SMART FLEXIBILITY.

SO WHILE THE CITROËN DS4 IS NOT AN SUV OR A HATCHBACK, IT DISTILLS WHAT'S BEST ABOUT ALL OF THESE GENRES AND CREATES SOMETHING GENUINELY FRESH. IT'S A STRIKING, SOPHISTICATED 5-DOOR COUPÉ THAT HAS THE BALANCE AND FINE-TUNED ENGINEERING TO INSPIRE KEEN DRIVERS WITH QUICK RESPONSES AND NIMBLE HANDLING. IT'S A LUXURIOUS WAY TO TRAVEL FOR FIVE AND IT'S A CREATIVE DESIGN STATEMENT. THIS IS WHAT HAPPENS WHEN YOU BEGIN WITH INNOVATION.

› **CONTENTS:** 14 INTRODUCTION 16 DEFYING DEFINITIONS 18 DRIVING EXPERIENCE 20 INTERIOR DESIGN
22 TECHNOLOGY & INNOVATION 24 ENVIRONMENTAL 26 SAFETY 28 RANGE OVERVIEW 30 OPTIONS
31 COLOUR, TRIM & WHEEL OPTIONS 32 EQUIPMENT SPECIFICATION 34 TECHNICAL SPECIFICATION
36 ACCESSORIES 37 ENVIRONMENTAL COMMITMENT 38 FINANCE, CARE & INSURANCE 39 GLOSSARY & DIMENSIONS

DEFYING DEFINITIONS. CITROËN DS4 PROVES THAT THERE'S NO CONTRADICTION BETWEEN SPORTY AND PURPOSEFUL, ELEGANT AND CURVACEOUS. THE ESTABLISHED DEFINITIONS SIMPLY DON'T COUNT.

WALK AROUND THE OUTSIDE AND YOU'LL FIND SWEEPING LINES, EXCITING DETAILS AND A PROFILE THAT IS BOTH COMPACT AND BOLD. STEP INSIDE AND YOU'LL DISCOVER A WELCOMING COMBINATION: STYLISH SPACE, LIGHT, INTUITIVE TECHNOLOGY AND HIGH QUALITY MATERIALS. NOW FIVE PEOPLE CAN TRAVEL COMFORTABLY IN COUPÉ STYLE, WHILE HIGH PROFILE ROAD PRESENCE AND SLEEK EFFICIENCY GO HAND IN HAND.

› HANDLE WITH FLAIR

Rear door handles are smoothly integrated into the window surround, leaving the side profile's organic curves uninterrupted.

› REAR REVELATION

The ultra-stylish, tough body-coloured rear bumper, beautifully formed lights, steeply raked tailgate and roof spoiler surround a luggage area of real versatility. Compromise is not included.

› ACCESS ALL AREAS

Citroën DS4 is a proper 5-door coupé. It just looks and drives like something far more stimulating...





POWER AND POISE. BENEATH CITROËN DS4'S SCULPTED BONNET YOU CAN SPECIFY ONE OF SIX ADVANCED ENGINES. BUT A GREAT DRIVING CAR NEEDS MORE THAN POWER...

CITROËN ENGINEERS HAVE USED THEIR IMAGINATION AND EXPERIENCE TO CREATE A CAR THAT HANDLES, RIDES AND RESPONDS WITH BALANCE AND FLUIDITY. DYNAMICALLY, CITROËN DS4 OFFERS BOTH INSPIRATION AND SUREFOOTED SAFETY – IT'S A PERFECT PLATFORM FOR ADDING YOUR CHOSEN EURO 5 ENGINE. THERE ARE TWO EURO 5 DIESELS, THE POWERFUL, FLEXIBLE HDi 160 AND THE SUPER-EFFICIENT e-HDi 115. SELECT PETROL AND THERE ARE THREE ENGINES TO CHOOSE FROM, THE VTi 120 WITH INGENUOUS VARIABLE VALVE TIMING, THE INCREDIBLY TORQUEY THP 160, OR THE ALL-NEW THP 200 FOR ULTIMATE PERFORMANCE. AGILITY AND STABILITY, POWER AND EFFICIENCY... CITROËN DS4 LEAVES NOTHING OUT.



› STAND OUT

Powerful fog lamps and stylish daytime-running LEDs ensure Citroën DS4 stands out, even in the most treacherous driving conditions.

› DRIVER FOCUSED

Cool, clear main instruments are right in the centre of your vision when you take the wheel, providing a perfect mix of analogue and digital information from the three chrome-rimmed dials.







ADVANCED LUXURY. IN EVERY SENSE, CITROËN DS4'S INTERIOR IS A SPECIAL PLACE. NATURALLY LIGHT AND ROOMY, IT IS MADE WITH METICULOUS CARE, COMBINING CRAFTSMANSHIP WITH HIGH TECHNOLOGY.

BEGINNING WITH THE FUNDAMENTALS, THE WHOLE INTERIOR IS THOROUGHLY SOUNDPROOFED, USING CAREFULLY CHOSEN MATERIALS THAT ABSORB NOISE AND VIBRATION. THIS RESTFUL SPACE IS THEN SHAPED FOR FIVE PEOPLE, BRINGING THEM AN ENVIRONMENT THAT CAN BE FINE-TUNED IN NUMEROUS WAYS. BACKLIGHTING CAN BE CHANGED FROM WHITE TO BLUE, AUTOMATIC DIGITAL AIR CONDITIONING, STANDARD ON DSTYLE AND DSPORT OR OPTIONAL ON DSIGN, HAS A SPECIAL 'REST' FUNCTION THAT MAINTAINS ITS TEMPERATURE SETTING FOR A FEW MINUTES AFTER THE ENGINE STOPS. FRONT SPORTS SEATS WITH LUMBAR ADJUSTMENT EVEN INCLUDE A MASSAGE FUNCTION FROM DSTYLE UPWARDS AND SUMPTUOUS LEATHER TOUCHES CREATE AN ALL ENCOMPASSING FEEL OF REFINEMENT AND QUALITY.

> 2 + 3 + DS4

Even with its flowing coupé profile, Citroën DS4's interior presents beautifully shaped and trimmed seating for three in the back – it's one definition of advanced luxury.



INNOVATION FOR LIFE. CITROËN DS4 IS PACKED WITH ADVANCED TECHNOLOGY AND NEW IDEAS, BUT NEVER JUST FOR THE SAKE OF IT. THEY ARE EACH CREATED TO ENTERTAIN, INSPIRE AND INFORM YOU AND YOUR PASSENGERS.



OPTIONAL EMYWAY IS A GREAT EXAMPLE. THIS IS YOUR ROUTE INTO THE LATEST GENERATION TECHNOLOGY, USING BIRDVIEW MODE AND EUROPEAN MAPS STORED ON INTERNAL MEMORY. IT ALSO ALLOWS EASY NAVIGATION OF YOUR MUSIC PLAYLISTS ON A 7" SCREEN AND INTEGRATES WITH THE BLUETOOTH® SYSTEM FOR YOUR MOBILE. TO PUT YOU IN THE MIDDLE OF THE MUSIC WHEREVER YOU GO, CITROËN DS4 USES A DIGITAL SOUND PROCESSOR TO CREATE LIFELIKE DEPTH AND SPACE. FOR THE ULTIMATE PERFORMANCE YOU CAN SELECT THE DENON HI-FI WITH BOOT MOUNTED SUBWOOFER, OPTIONAL ON DSTYLE AND DSPORT.



> DIGITAL ON THE GO

Relax and immerse your senses in a whole new audio driving experience with the state-of-the-art digital radio. Enjoy many digital radio channels not available on FM, improved station selection and the outstanding digital reception, optional as part of eMyWay DAB.

> PLUG AND PLAY

The centre console discreetly sorts the connectivity, thanks to its USB and auxiliary sockets, standard on DStyle and DSport, optional on DSign models.





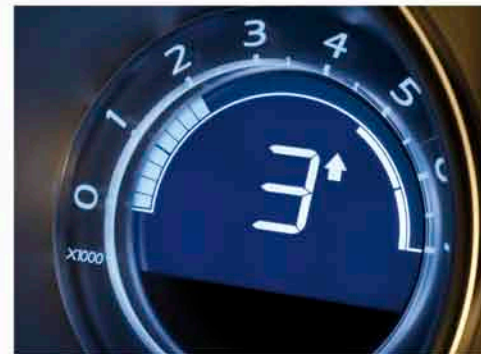


GUILT-FREE PLEASURE. DRIVING PLEASURE AND ENVIRONMENTAL EFFICIENCY BLEND HAPPILY IN CITROËN DS4. IT'S THE BALANCE THAT MAKES IT SUCH AN INSPIRING CAR AND A GENUINE PIONEER.

THE EXTRAORDINARY MICRO-HYBRID TECHNOLOGY OF e-HDi REDUCES BOTH FUEL CONSUMPTION AND CO₂ EMISSIONS BY UP TO 15% AROUND TOWN, THANKS TO A COMBINATION OF EFFICIENT HDi ENGINEERING AND INGENUOUS ADVANCES. REGENERATIVE BRAKING RECOVERS ENERGY USED DURING DECELERATION AND SECOND GENERATION STOP & START CUTS THE ENGINE AS YOU ROLL TO A HALT. WHEN YOU RELEASE THE BRAKE PEDAL AND MOVE OFF, IT SEAMLESSLY RESTARTS, SO YOU CAN SAY GOODBYE TO POINTLESS IDLING IN TRAFFIC.

› PERFECT SHIFT WORK

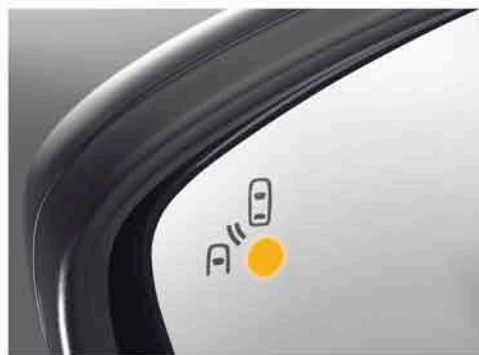
Citroën DS4 incorporates a Gear Efficiency Indicator, on manual models (excluding THP 200), which helps you to shift at just the right moment for optimum fuel consumption. The ideal gear ratio appears in the centre of the rev counter.





SAFETY MOVES ON. PIONEERING PROTECTION IS ENGINEERED IN TO EVERY PART OF CITROËN DS4. IT'S WHERE CREATIVE DESIGN AND NEW TECHNOLOGY PLAY A VITAL ROLE.

OUT ON THE ROAD, WHEN YOU NEED TO CHANGE LANES, THE BLIND SPOT MONITORING SYSTEM, STANDARD ON DSPORT AND OPTIONAL ON DSTYLE MODELS, IS LOOKING OUT FOR YOU. IT GIVES A VISIBLE WARNING IN YOUR DOOR MIRROR IF IT DETECTS A HIDDEN VEHICLE. CRUISE CONTROL AND A PROGRAMMABLE SPEED LIMITER MAINTAIN HASSLE-FREE AND SAFE PROGRESS. A PURE EXAMPLE OF CITROËN INNOVATION ON YOUR SIDE IS ETOUCH WHICH BRINGS YOU KEY SERVICES BY HARNESSING TECHNOLOGY. ON DSPORT MODELS CITROËN ETOUCH EMERGENCY AND ASSISTANCE SYSTEM USES YOUR CAR'S GPS AND MAP INTEGRATED SIM TO IDENTIFY AND LOCATE YOU. IN THE EVENT OF AN INCIDENT AN OPERATOR WILL IMMEDIATELY SEND TECHNICAL SUPPORT OR HELP WHEREVER YOU NEED IT. THIS SERVICE IS FREE AND AVAILABLE 24 HOURS EVERY DAY.



> GOODBYE TO BUMPS

For safe manoeuvres without bumps and scuffs, Citroën DS4 has rear parking sensors, standard on DStyle and DSport and optional on DSign models. For further, pinpoint accuracy, front parking sensors are standard on DSport and optional on DStyle models.



> YOUR PARKING PARTNER

When you see what looks like a space with your name on it, the parking space 'gap' measurement system standard on DSport and optional on DStyle models will measure it and let you know if there's room – it takes the guesswork and the hassle out of urban parking.



> SUREFOOTED EVERYWHERE

Citroën DS4 has intelligent traction control that continuously monitors grip levels at each driven wheel. If it detects slip, it fine-tunes power delivery to ensure complete stability. Integrated with this system is an automatic electric parking brake, standard on DStyle (excluding THP 160 6-speed automatic) and DSport models. Also the Hill Start Assist, standard on all models, holds you securely in place on steep inclines without rolling backwards.

THREE ORIGINALS. CITROËN DS4 NEATLY DRIVES AROUND PREDICTABLE CATEGORIES, BUT YOU WILL KNOW WHICH MODEL SUITS YOU BEST.

DSIGN, DSTYLE AND DSPORT EACH COME WITH A HUGE ARRAY OF INTELLIGENT,
ENTERTAINING AND LUXURIOUS FEATURES – THERE IS NO 'STANDARD' VERSION.
IT'S MORE A MATTER OF EMPHASIS, STYLE AND PERSONALITY...



DSIGN

MAKE YOUR OWN RULES

FROM ITS FULL SPECTRUM OF SAFETY TECHNOLOGY TO THE 17" 'CANBERRA' ALLOY WHEELS, SURROUND SOUND 6-SPEAKER STEREO AND DAYTIME-RUNNING LEDS, THIS IS WHERE THE UNIQUE CITROËN DS4 STORY BEGINS.

> CITROËN DS4 **DSIGN** SPECIFICATION INCLUDES:

- ABS with Electronic Brakeforce Distribution (EBD)
- Emergency Braking Assistance (EBA)
- Electronic Stability Programme (ESP) with traction control
- Driver's, front passenger's and front lateral airbags
- Front and rear curtain airbags
- Hill Start Assist function
- High-frequency multi-function plip remote control central locking with deadlocks
- Daytime-running LEDs
- Halogen headlamps
- Leather steering wheel with chrome inserts
- Body colour door handles and door mirrors
- Body colour front and rear bumpers
- 17" 'Canberra' alloy wheels (set of four)
- Cruise control with speed limiter and memory settings
- Electrically adjustable and heated door mirrors
- Front electric windows with 'one-touch' operation and anti-pinch
- Air conditioning
- Multi-functional steering wheel
- RDS stereo radio/CD player with 6 loudspeakers, surround sound and auxiliary socket
- Sliding front armrest with storage
- Front fog lights with cornering function
- Lumbar adjustment on front seats
- Dark tinted rear side and tailgate windows
- Perimetric and volumetric anti-theft alarm

DSTYLE

TURN HEADS, FREE MINDS

CITROËN DS4 DSTYLE IS FULL OF EYE-CATCHING DESIGN DETAILS BUT IT'S ALSO PACKED WITH FRESH IDEAS. FOR EXAMPLE FRONT SPORTS SEATS WITH ELECTRIC LUMBAR ADJUSTMENT AND MASSAGE FUNCTION CAN DELIGHT YOU AND YOUR PASSENGERS.

> CITROËN DS4 **DSTYLE** SPECIFICATION IN ADDITION TO DSIGN INCLUDES:

- Automatic electric parking brake (excludes THP 160)
- Electrically adjustable, foldable and heated door mirrors with integrated kerb side LED
- Automatic rain-sensitive windscreen wipers, automatic illumination of headlamps and electrochromic rear view mirror
- Front sports seats with electric lumbar adjustment and massage function
- Lower front grille chrome surround
- Chrome strip on rear bumper
- Brushed aluminium effect front door sill protectors
- 18" 'Brisbane' alloy wheels (set of four)
- Aluminium drilled pedals (excludes VTi 120)
- Rechargeable torch and 12V socket in boot
- Rear centre armrest with ski flap
- Sliding height-adjustable front armrest with storage
- Rear parking sensors
- Automatic digital air conditioning with dual-zone temperature setting
- **Connecting Box** – Bluetooth® system with USB socket
- Mistral 'Claudia' leather and 'Sao' cloth upholstery

DSport

THE ULTIMATE EXPRESSION

SETTLE INTO THE MISTRAL 'CLAUDIA' LEATHER INTERIOR AND START UP THE MOST COMPLETE EXPRESSION OF CITROËN DS4. THIS IS WHERE INNOVATION, REFINEMENT, STYLE AND VERSATILITY CREATE A CLASS OF ONE.

> CITROËN DS4 **DSport** SPECIFICATION IN ADDITION TO DSTYLE INCLUDES:

- Front heated sports seats
- Citroën eTouch Emergency & Assistance system
- Mistral 'Claudia' leather upholstery
- 19" 'Cairns' alloy wheels (set of four)
- Front parking sensors with parking space 'gap' measurement system
- Blind spot monitoring system
- Body colour or black side rubbing strips with chrome insert

	CO ₂ EMISSIONS (G/KM)		
	DSign	DStyle	DSport
PETROL ENGINE AVAILABILITY			
VTi 120 manual	144	144	
THP 160 6-speed automatic		178	
THP 200 6-speed manual			149
DIESEL ENGINE AVAILABILITY			
e-HDi 115 6-speed manual	113	113	
e-HDi 115 Airdream EGS6		114	
HDi 135 6-speed manual		130	
HDi 160 6-speed manual		130	130
HDi 160 6-speed automatic		149	149

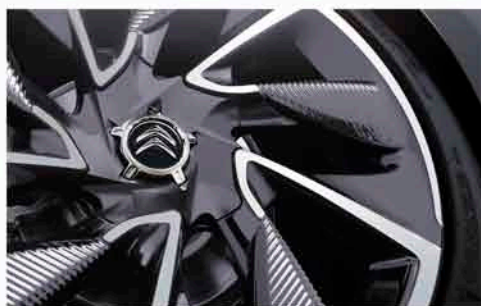
All diesel engines are fitted with Diesel Particulate Filter System.

YOUR DEFINITION OF DS4. CITROËN DS4 BRINGS OUT THE INDIVIDUAL AND THE NON CONFORMIST, SO THE RANGE OF OPTIONS IS INSPIRING AND DIVERSE.

FROM ESSENTIAL TECHNOLOGY TO SENSUAL LUXURY, YOUR OPTIONS ARE WIDE OPEN. EXPLORE THE FULL LIST TO SEE WHAT YOU CAN ADD TO YOUR CHOSEN MODEL.

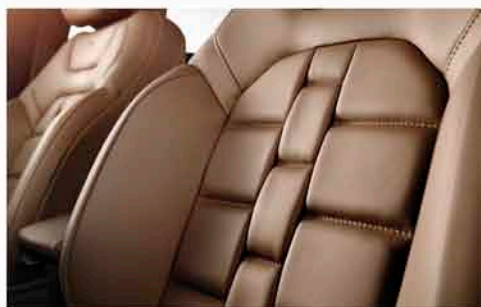
› MOVING STYLE AND SUBSTANCE

Choose the stunning 19" 'Cairns' alloy wheels and combined with the upgraded suspension, it makes for a perfect blend of aesthetics and dynamics.



› HABANA LEATHER

The tradition of fine luxury is alive and well in this most advanced interior. Habana 'Club' leather touches provide an all-encompassing sense of quality and comfort.



	DSign	DStyle	DSport
OPTION SUMMARY			
eMyWay DAB – digital radio, CD, colour satellite navigation, live traffic information, European mapping, Bluetooth® system and USB connectivity	○ ¹	○ ^{1/2}	○ ^{1/2}
eMyWay DAB Hi-Fi Signature – digital radio, CD, eMyWay and premium Denon Hi-Fi including digital amplifier, 4 woofers, 4 tweeters and a subwoofer mounted in the boot		○	○
Denon Hi-Fi system		○	○
Full size spare wheel	○		
Space saver spare wheel		○ ³	
Automatic Signature – automatic digital air conditioning with dualzone temperature setting, automatic rain-sensitive windscreen wipers, automatic illumination of headlamps, electrochrome rear view mirror, 'guide-me-home' headlamp function and polyphonic, customisable sound alerts	○	●	●
City Signature – rear parking sensors, electrically foldable door mirrors with integrated kerb side LED, chrome strip on rear bumper, rechargeable torch and 12V socket in boot	○	●	●
Style and Technology Signature – Connecting Box (Bluetooth® system with USB socket) and invisible aerial, brushed aluminium effect front door sill protectors	○ ¹	● ¹	● ¹
19" 'Cairns' alloy wheels		○ ^{3/4}	●
Body colour side rubbing strips with chrome insert		○ ⁵	● ⁵
Perla Nera Black side rubbing strips with chrome insert		○ ⁶	● ⁶
Security Signature – blind spot monitoring system, front parking sensors with parking space 'gap' measurement system and tyre pressure monitor		○ ⁷	
Security Xenon Signature – blind spot monitoring system, front parking sensors with parking space 'gap' measurement system, tyre pressure monitor and Xenon Dual-Function Directional headlamps with washer jets		○ ⁸	
Xenon Dual-Function Directional headlamps with washer jets and tyre pressure monitor			○
Mistral 'Claudia' leather and 'Sao' cloth upholstery. Front heated sports seats with electric lumbar adjustment and massage function and rear centre armrest with ski flap	○	●	
Mistral 'Claudia' leather upholstery. Front heated sports seats with electric lumbar adjustment and massage function and rear centre armrest with ski flap	○	○ ⁹	●
Mistral and red 'Claudia' leather upholstery. Front heated sports seats with electric lumbar adjustment and massage function, red detailed serigraphy on brushed aluminium effect front door sill protectors and red leather EGS selector or gear knob		○ ¹⁰	○ ^{10/11}
Mistral and white 'Claudia' leather upholstery. Front heated sports seats with electric lumbar adjustment and massage function, white detailed serigraphy on brushed aluminium effect front door sill protectors and Mistral leather EGS selector or gear knob		○ ¹²	○ ^{11/12}
Habana 'Club' leather upholstery. Front heated sports seats with electric lumbar adjustment and massage function and Mistral leather EGS selector or gear knob		○ ¹³	○ ^{11/13}
Metallic/Pearlescent paint	○	○	○

- Standard equipment
- Optional factory fitted equipment

- Mobile phone compatibility can vary by phone manufacturer. Please consult your Dealer for further compatibility information.
- Connecting Box (Bluetooth® system with USB socket) is standard on DStyle and DSport models.
- Space saver spare wheel and 19" 'Cairns' alloy wheels are not compatible.
- HDi 160 and HDi 135 models only.
- Available with Perla Nera Black, Hickory Brown, Bourrasque Blue or Shark Grey.
- Available with Polar White, White, Arctic Steel or Babylon Red.
- Excludes THP 160 model.

- Tyre pressure monitor not available on THP 160 model.
- Front sports seats with electric lumbar adjustment and massage function and rear centre armrest with ski flap are standard on DStyle models.
- Available with Perla Nera Black, Shark Grey or Babylon Red.
- Front heated sports seats with electric lumbar adjustment and massage function are standard on DSport models.
- Available with Polar White, Perla Nera Black, Shark Grey, Arctic Steel or White.
- Not available with Babylon Red.

ART OF THE PERSONAL. EIGHT BODY COLOURS FROM COOL AND SUBTLE TO BRIGHT AND VIBRANT, STUNNING INTERIOR MATERIALS AND THREE BOLDLY SCULPTED ALLOY WHEEL DESIGNS... THESE ARE THE ELEMENTS TO GUIDE YOUR INDIVIDUAL TASTE.

BODY COLOURS



TRIMS



(P) Pearlescent
(M) Metallic

• Standard equipment
○ Optional factory fitted equipment

¹ Available with Perla Nera Black, Shark Grey or Babylon Red.
² Available with Polar White, Perla Nera Black, Shark Grey, Arctic Steel or White.

³ Not available with Babylon Red.
⁴ HDi 135, 160 and 160 automatic models only.

Please note: Colours and pictures shown are for illustration purposes only. Please consult your Dealer for definitive colour and trim/upholstery details.

17" 'CANBERRA' ALLOY WHEELS Set of four Tyres: 215/55 R17			18" 'BRISBANE' ALLOY WHEELS Set of four Tyres: 225/45 R18		
DSign	DStyle	DSport	DSign	DStyle	DSport
•				•	



19" 'CAIRNS' ALLOY WHEELS Set of four Tyres: 225/40 R19		
DSign	DStyle	DSport
	○ ⁴	•



EQUIPMENT SPECIFICATION

- Standard equipment
- Optional factory fitted equipment

- ¹ Diesel models only.
- ² Excludes THP 160 6-speed automatic model.
- ³ Available only when optional Mistral 'Claudia' leather and 'Sao' cloth or Mistral 'Claudia' leather is ordered.
- ⁴ Available only when optional Mistral 'Claudia' leather is ordered.
- ⁵ Available only when optional Mistral 'Claudia', Mistral and red 'Claudia', Mistral and white 'Claudia' or habana 'Club' leather is ordered.
- ⁶ Not present if optional Xenon Dual-Function Directional headlamps or Security Xenon Signature is ordered.
- ⁷ Available only as part of optional Automatic Signature.
- ⁸ Available only as part of optional City Signature.
- ⁹ Available only as part of optional Security Signature or Security Xenon Signature.
- ¹⁰ Available with Perla Nera Black, Hickory Brown, Bourrasque Blue or Shark Grey.
- ¹¹ Available with Polar White, White, Arctic Steel, or Babylon Red.

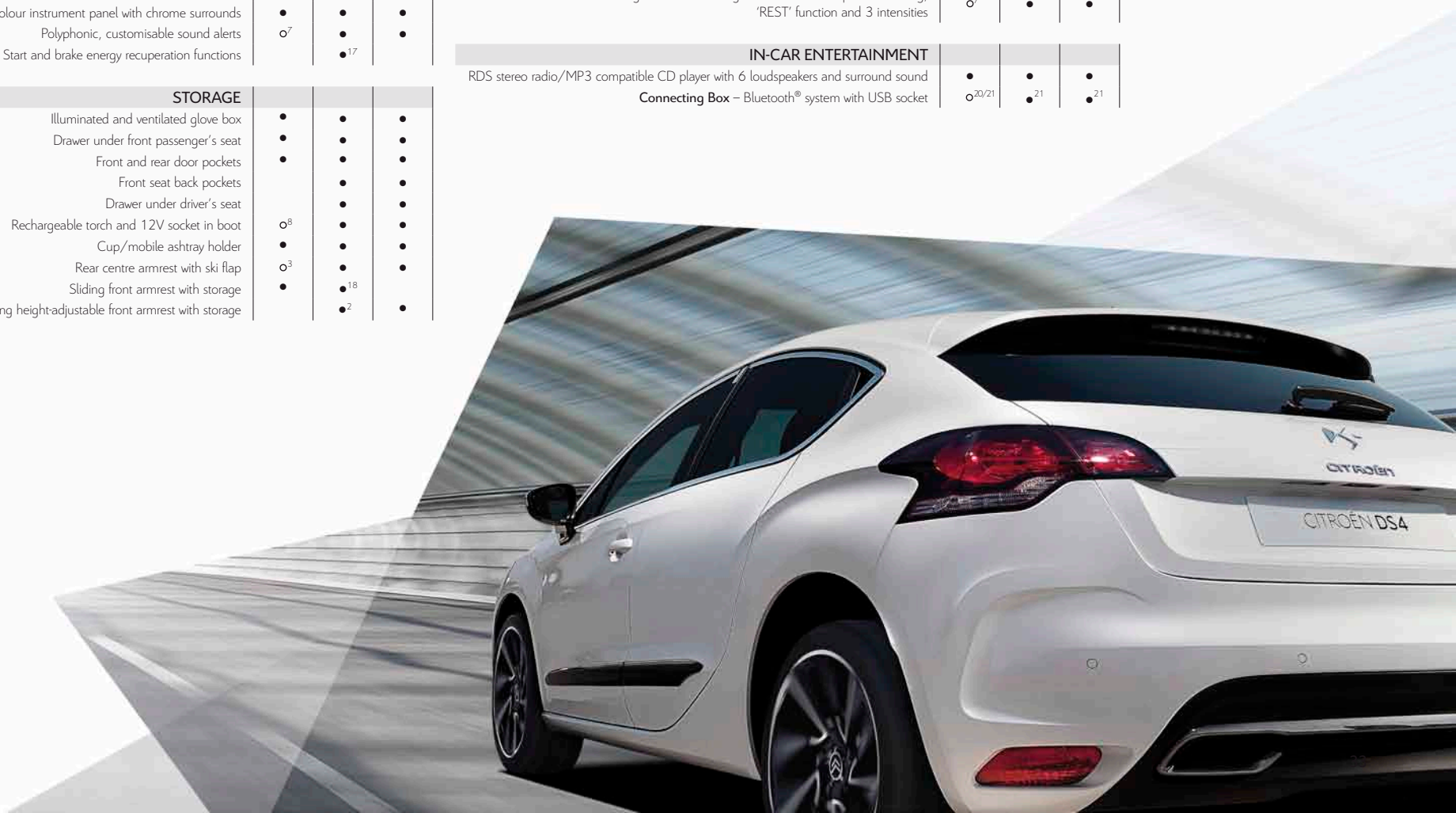
- ¹² Available only as part of optional Style and Technology Signature.
- ¹³ HDi 135, 160 and 160 automatic models only.
- ¹⁴ Manual models only.
- ¹⁵ Excludes VTi 120 model.
- ¹⁶ Excludes THP 200 and automatic models.
- ¹⁷ e-HDi models only.
- ¹⁸ THP 160 model only.
- ¹⁹ Available only as part of optional Security Signature or Security Xenon Signature.
- ²⁰ Available only as part of optional eMyWay or Style and Technology Signature.
- ²¹ Mobile phone compatibility can vary by phone manufacturer. Please consult your Dealer for further compatibility information.

	DSign	DStyle	DSport
SAFETY & SECURITY			
ABS with Electronic Brakeforce Distribution (EBD)	●	●	●
Emergency Braking Assistance (EBA)	●	●	●
Electronic Stability Programme (ESP) with traction control	●	●	●
Intelligent Traction Control	●	●	●
Driver's airbag	●	●	●
Front passenger's airbag with cut-off device	●	●	●
Front lateral airbags	●	●	●
Front and rear curtain airbags	●	●	●
Hill Start Assist function	●	●	●
High-frequency multi-function plip remote control central locking with deadlocks	●	●	●
Front seat belt pre-tensioners with force-limiters	●	●	●
Seat belt force limiter on two outer rear seats	●	●	●
Five 3-point inertia reel seat belts	●	●	●
Height-adjustable front seat belts	●	●	●
Two outer rear seats Isofix child seat anchorage points	●	●	●
Child lock indicator	●	●	●
Transponder immobiliser	●	●	●
Automatic re-locking after 30 seconds (when using the plip – if doors and boot remain unopened)	●	●	●
Automatic activation of hazard warning lights (in case of rapid deceleration or impact)	●	●	●
Automatic door and boot locking (when car in motion and unlocking in case of impact)	●	●	●
Warning lights and audible warning system for all 'unfastened' seat belts	●	●	●
Perimetric and volumetric anti-theft alarm	●	●	●
Anti-misfuelling device	● ¹	● ¹	● ¹
Automatic electric parking brake	●	● ²	●
Citroën eTouch Emergency & Assistance system	●	●	●
SEATING			
Front and rear head restraints	●	●	●
Height-adjustable front seats	●	●	●
Rear 1/3-2/3 split/folding seats	●	●	●
Lumbar adjustment on front seats	●	●	●
Front sports seats with electric lumbar adjustment and massage function	○ ³	●	●
Front leather heated sports seats	○ ⁴	○ ⁵	●

	DSign	DStyle	DSport
LIGHTING & VISIBILITY			
Panoramic windscreen	●	●	●
Heated rear hatchback window	●	●	●
Height-adjustable headlamps	●	● ⁶	● ⁶
Daytime-running LEDs	●	●	●
Halogen headlamps	●	●	●
High level third brake light	●	●	●
'Guide-me-home' headlamp function	○ ⁷	●	●
Electrically adjustable and heated door mirrors	●	●	●
Electrically foldable door mirrors with integrated kerb side LED	○ ⁸	●	●
Blind spot monitoring system	●	○ ⁹	●
Front fog lights with cornering function	●	●	●
Automatic rear wiper (when reverse gear is engaged)	●	●	●
Automatic rain-sensitive windscreen wipers, automatic illumination of headlamps and electrochrome rear view mirror	○ ⁷	●	●
Front and rear courtesy and reading lights	●	●	●
Front and rear courtesy and LED reading lights	●	●	●
STYLE			
EXTERIOR			
Dark tinted rear side and tailgate windows	●	●	●
Chrome side window surrounds	●	●	●
Body colour door handles and door mirrors	●	●	●
Body colour front and rear bumpers	●	●	●
Body colour rear spoiler	●	●	●
Body colour side rubbing strips with chrome insert	●	○ ¹⁰	● ¹⁰
Perla Nera Black side rubbing strips with chrome insert	●	○ ¹¹	● ¹¹
Lower front grille chrome surround	●	●	●
Chrome strip on rear bumper	○ ⁸	●	●
Brushed aluminium effect front door sill protectors	○ ¹²	●	●
17" 'Canberra' alloy wheels (set of four)	●	●	●
18" 'Brisbane' alloy wheels (set of four)	●	●	●
19" 'Cairns' alloy wheels (set of four)	●	○ ¹³	●
INTERIOR			
Leather steering wheel with chrome inserts	●	●	●
Leather gear knob	●	● ¹⁴	● ¹⁴
Leather parking brake handgrip	●	●	●
Aluminium drilled pedals	●	● ¹⁵	●

	DSign	DStyle	DSport
DRIVER INFORMATION			
Gear Efficiency Indicator (GEI)	•	• ¹⁴	• ¹⁶
Multi-function on-board trip computer (current fuel consumption, average fuel consumption, distance covered, average speed and range on remaining fuel)	•	•	•
Puncture repair kit	•	•	•
Maintenance indicator	•	•	•
Oil level indicator	•	•	•
Exterior temperature display with frost alert	•	•	•
Audible lights-on and key-in-ignition warning	•	•	•
Automatic fuel cap (operated from inside the cabin)	•	•	•
'Black panel' night-time instrument lighting	•	•	•
Customisable colour instrument panel with chrome surrounds	•	•	•
Polyphonic, customisable sound alerts	o ⁷	•	•
Second generation Stop & Start and brake energy recuperation functions		• ¹⁷	
STORAGE			
Illuminated and ventilated glove box	•	•	•
Drawer under front passenger's seat	•	•	•
Front and rear door pockets	•	•	•
Front seat back pockets		•	•
Drawer under driver's seat		•	•
Rechargeable torch and 12V socket in boot	o ⁸	•	•
Cup/mobile ashtray holder	•	•	•
Rear centre armrest with ski flap	o ³	•	•
Sliding front armrest with storage	•	• ¹⁸	
Sliding height-adjustable front armrest with storage		• ²	•

	DSign	DStyle	DSport
COMFORT & CONVENIENCE			
Variable power assisted steering	•	•	•
Height and reach adjustable steering wheel	•	•	•
Multi-functional steering wheel	•	•	•
Cruise control with speed limiter and memory settings	•	•	•
Mobile ashtray and cigarette lighter	•	•	•
Front electric windows with 'one-touch' operation and anti-pinch	•	•	•
Rear parking sensors	o ⁸	•	•
Front parking sensors with parking space 'gap' measurement system		o ¹⁹	•
Air conditioning	•		
Automatic digital air conditioning with dual-zone temperature setting, 'REST' function and 3 intensities	o ⁷	•	•
IN-CAR ENTERTAINMENT			
RDS stereo radio/MP3 compatible CD player with 6 loudspeakers and surround sound	•	•	•
Connecting Box – Bluetooth® system with USB socket	o ^{20/21}	• ²¹	• ²¹



TECHNICAL SPECIFICATION



64.2mpg
on e-HDi 115 Airdream
EGS6 models



114g/km CO₂
on e-HDi 115 Airdream
EGS6 models

MPG figures are achieved under official EU test conditions, intended as a guide for comparative purposes only, and may not reflect actual on-the-road driving conditions.

	PETROL MODELS		
	VTi 120 manual	THP 160 6-speed automatic	THP 200 6-speed manual
ENGINE			
Capacity (cc)	1598	1598	1598
Cylinders	4 in line	4 in line	4 in line
Bore and stroke (mm)	77.0 x 85.8	77.0 x 85.8	77.0 x 85.8
Max power CEE (kW/rpm)	88/6000	120/6000	147/5800
Max torque CEE (Nm/rpm)	160/4250	240/1400	275/1700
Fuel system	Multi-point electronic fuel injection	Multi-point electronic turbocharged fuel injection	Multi-point electronic turbocharged fuel injection
Euro status	Euro 5	Euro 5	Euro 5
TRANSMISSION			
Transmission type	Five speed manual	Six speed automatic	Six speed manual
Clutch type	Dry single plate	N/A	Dry single plate
(All figures driver alone) PERFORMANCE			
Max speed (mph)	120	132	146
0-62mph (secs)	12.2	9.3	8.5
Standing 1000m (secs)	33.4	30.4	28.9
(Official Government test fuel consumption figures) ECONOMY Litres/100km (mpg)			
Urban cycle	8.3 (34.0)	10.6 (26.6)	8.4 (33.6)
Extra urban	5.0 (56.5)	6.0 (47.1)	5.2 (54.3)
Combined	6.2 (45.6)	7.7 (36.7)	6.4 (44.1)
CO₂ EMISSIONS (g/km)			
	144	178	149
Please note: the maximum plated weights must not be exceeded WEIGHTS (kg)			
Mass in service	1360	1466	1431
Max laden weight	1755	1835	1820
Gross train weight	2955	2635	2820
Max towing weight braked	1450	1000	1250
Max towing weight unbraked	640	715	695
Max tow hitch download	75	75	75
BRAKES			
ABS with EBD and EBA as standard on all models. Front ventilated discs, rear discs.			
STEERING			
Variable power assisted steering			
Turning circle between kerbs (m)	10.7		
Number of turns lock to lock	2.75		
SUSPENSION			
Anti-roll bars front and rear. Front: MacPherson strut/coil springs/hydraulic dampers. Rear: independent trailing arms/coil springs/hydraulic dampers.			
FUEL TANK CAPACITY Litres (gallons)			
60 (13.2)			
EXTERIOR DIMENSIONS (mm)			
Length/width/height/wheelbase			
4275/1810/1523/2612			
BOOT VOLUMES & DIMENSIONS			
Seats up – below parcel shelf min/max (litres VDA)	359/385		
Seats down – up to roof (litres VDA)	1021		
Depth under parcel shelf (mm)	598		

DIESEL MODELS

e-HDi 115 6-speed manual	e-HDi 115 Airdream EGS6	HDi 135 6-speed manual	HDi 160 6-speed manual	HDi 160 6-speed automatic
1560 4 in line 75.0 x 88.3 84/3600 270/1750 High pressure direct diesel injection Euro 5	1560 4 in line 75.0 x 88.3 84/3600 270/1750 High pressure direct diesel injection Euro 5	1997 4 in line 85.0 x 88.0 100/4000 320/2000 High pressure direct diesel injection Euro 5	1997 4 in line 85.0 x 88.0 120/3750 340/2000 High pressure direct diesel injection Euro 5	1997 4 in line 85.0 x 88.0 120/3750 340/2000 High pressure direct diesel injection Euro 5
Six speed manual Dry single plate	Six speed Electronic Gearbox System Dry single plate	Six speed manual Dry single plate	Six speed manual Dry single plate	Six speed sequential auto-adaptive automatic Dry single plate
118 12.4 33.7	118 12.4 33.7	127 9.4 31.1	132 9.3 30.6	129 9.9 31.8
5.1 (55.4) 3.9 (72.4) 4.3 (65.7)	4.8 (58.9) 4.1 (68.9) 4.4 (64.2)	6.1 (46.3) 4.2 (67.3) 4.9 (57.6)	6.1 (46.3) 4.2 (67.3) 4.9 (57.6)	7.4 (38.2) 4.7 (60.1) 5.7 (49.6)
113	114	130	130	149
1417 1805 3105 1550 680 75	1428 1815 3115 1550 680 75	1496 1880 3180 1550 695 75	1496 1880 3180 1550 695 75	1540 1940 3140 1450 695 75
ABS with EBD and EBA as standard on all models. Front ventilated discs, rear discs.				
Variable power assisted steering				
10.7				
2.75				
Anti-roll bars front and rear. Front: MacPherson strut/coil springs/hydraulic dampers. Rear: independent trailing arms/coil springs/hydraulic dampers.				
60 (13.2)				
4275/1810/1523/2612				
359/385				
1021				
598				



THE FUTURE OF FINE TUNING.

ACCESSORIES FOR CITROËN DS4 CAN ENHANCE EVERY ASPECT, FROM COMMUNICATION, ENTERTAINMENT AND ROUTE FINDING, TO HASSLE-FREE PARKING, DESIGN FLAIR AND OUTDOOR PURSUITS.

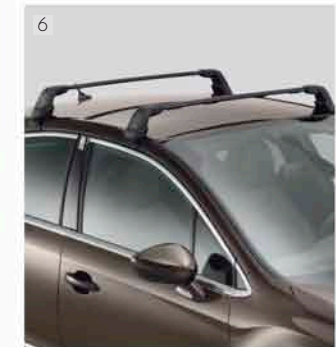
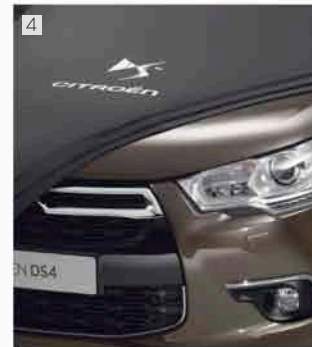
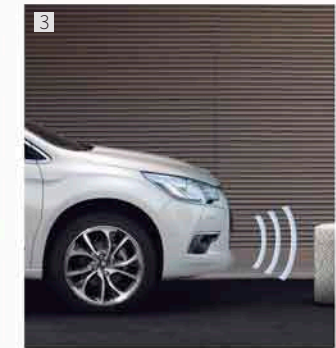
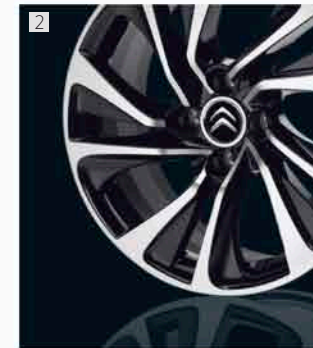
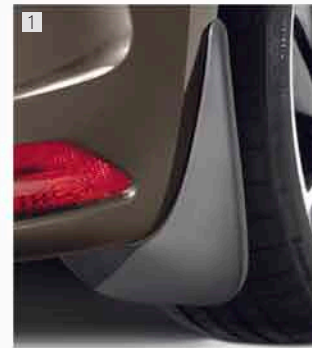
NATURALLY ALL ACCESSORIES ARE ENGINEERED TO CITROËN'S NO-COMPROMISE STANDARDS AND ARE A PERFECT MATCH FOR CITROËN DS4.



> WIFI ON BOARD

Citroën's new 'WiFi on Board' system creates an in-car wireless network, allowing simultaneous internet connection for multiple WiFi devices such as laptops, smartphones and game consoles.

Requires a 3G/3G+ SIM, which is not included.



> 1 MUDFLAPS

Contoured front and rear mudflaps protect bodywork and enhance safety in poor weather.

> 2 ALLOY WHEELS

Add your personal touch with our alloy wheel range. These alloys have been designed and developed featuring a bold design with clean lines. Alloy wheels are one of the few parts that can profoundly affect a vehicle's appearance.

> 3 PARKING SENSORS (FRONT & REAR)

Parking becomes stress-free with Citroën's front and rear parking sensors, which are subtly integrated into your new Citroën DS4's bumpers.

> 4 BODY COVER

Keep your new Citroën DS4 as clean and new as the day it left the showroom.

> 5 TOWBARS

Citroën towbars have been developed to ensure the highest standards of safety and strength.

> 6 ROOF BARS

Citroën traversing roofbars are designed to match the contours of your new Citroën DS4 and can be used with Citroën bicycle carriers, ski/snowboard carriers and roof boxes for quick and easy transport and storage solutions.

EFFICIENCY MINUS COMPROMISE. CITROËN HAS CREATED FUELEFFICIENT VEHICLES WITHOUT SACRIFICING DRIVER ENJOYMENT FOR SOME TIME. THE LATEST ADVANCES TAKE THIS FINE BALANCE FURTHER STILL...

WITH THE PROVEN CREDENTIALS AND ENVIRONMENTAL PERFORMANCE OF CITROËN HDi DIRECT INJECTION ENGINES AS INSPIRATION, e-HDi ADDS NEW TECHNOLOGY, SUCH AS A SMOOTH, SIMPLE STOP & START SYSTEM AND EGS GEARBOX. STOP & START PUTS THE ENGINE INTO IDLE MODE AS YOU DECELERATE AND STOPS ALTOGETHER AS YOU COME TO A HALT. THE MOMENT YOU TAKE YOUR FOOT OFF THE BRAKE, IT RESTARTS SILENTLY AND WITHOUT VIBRATION. THE RESULTS ARE A DRAMATIC REDUCTION IN BOTH FUEL CONSUMPTION AND CO₂ EMISSIONS, COMBINED WITH RESPONSIVE PERFORMANCE WHEREVER YOU GO.

We've also been equipping more of our vehicles with more environmentally friendly breakthroughs, such as our Electronic Gearbox System (EGS), which boasts impressively greener credentials, with less pollution and up to 5% more economy than a conventional manual gearbox system. In addition, Citroën has expanded the use of the exceptionally efficient, self-regenerating Diesel Particulate Filter System in our models. Cleaner, greener driving without taking away from the drive – that's what you can continue to expect from Citroën.



› PURE TECHNOLOGY

Demonstrating Citroën's commitment to Créative Technologie, PureTech engines provide increased power with lower fuel consumption and emissions by adopting a smaller and lighter three cylinder configuration constructed of pressure-cast aluminium. In conjunction with low friction component coatings, improved air and fuel flow and optimised combustion, this allows engines to offer more power, better fuel economy and significantly lower CO₂ emissions.

› AIRDREAM – A BENCHMARK

Citroën's environmental commitment and advanced efficiency are perfectly illustrated by Airdream. It's a benchmarking scheme that has three demanding criteria which a vehicle must achieve before it can wear the name. Firstly it must emit no more than 140g/km CO₂. Secondly it must be produced at a plant that meets the rigorous ISO 14001 certification and also it must be 95% recoverable. Only e-HDi, electric or Hybrid4 engined Citroëns currently qualify. It's no surprise that Citroën is one of the leaders in Europe for low CO₂ emissions.

› ELECTRIFYING. HOWEVER YOU LOOK AT IT

Forget what you know about electric cars. Citroën Survolt concept combines undiluted glamour with advanced sporting dynamics, then adds a 100% electric drivetrain. Outside, LED lights, voluptuous curves, two-tone charcoal and fuchsia paintwork, and a race-inspired rear spoiler meet your gaze. Inside, a stunning blend of curved chrome, swooping glass, high technology and organic forms welcomes you to an entirely new place. But this is no simple styling exercise. At heart, Survolt is even more radical, because although it is designed to thrill, it is powered purely by silent, efficient, clean electricity.



DRIVE YOUR WAY. GET BEHIND THE WHEEL OF YOUR NEW CITROËN DS4, WITH CITROËN'S RANGE OF FINANCE AND INSURANCE PRODUCTS.

CITROËN FINANCIAL SERVICES

PURCHASE PLAN

Own your vehicle with this flexible package designed to fit your budget.

ELECT 3

A new Citroën car every two or three years with monthly payments structured to suit your budget.

ELECT 4

Enjoy the convenience of a new car without the stress and hassle of ownership.

TO FIND OUT MORE ABOUT CITROËN PRODUCTS AND SERVICES, GO TO WWW.CITROEN.CO.UK OR CONTACT YOUR CITROËN DEALER.

FOR BUSINESS USERS

CITROËN CONTRACT MOTORING

HIRE PURCHASE

A tried and tested finance package that allows you to own your vehicle.

BUSINESS LEASE

An alternative to vehicle ownership that allows you to control your business cash flow and gain tax efficiencies.

LEASE PURCHASE

Own a vehicle with a finance solution that offers ultimate flexibility to complement your business cash flow.

CONTRACT HIRE

A non-ownership finance solution that keeps costs fixed and risks low.

FOR MORE INFORMATION ON CITROËN FLEET AND BUSINESS SALES, PLEASE CALL CITROËN FLEET CONNECT ON 08457 940 940 OR LOOK US UP AT WWW.CITROEN.CO.UK/FLEET

CITROËN INSURANCE

INSTANT COVER

To help you drive away your new car without delay, we offer Instant Cover insurance, providing you with 7 days comprehensive car insurance, for free!

MOTOR INSURANCE

Citroën Insurance has been designed specifically for our vehicles. You don't just get repairs you get Citroën expertise, service, quality and parts. So, when the time comes to renew your insurance cover, call Citroën Insurance on 0870 024 2725.

Lines open 8am - 8pm weekdays, 9am - 5pm Saturdays. Max call charge from a BT landline is 8p per minute. Calls from other networks may vary. Alternatively, visit www.citroen.co.uk for more information or to apply online.

Citroën Insurance is underwritten by UK Insurance Ltd which is authorised and regulated by the Financial Conduct Authority. Citroën Insurance is a trading style of Banque PSA Finance UK of Quadrant House, Princess Way, Redhill, Surrey, RH1 1QA.

ESSENTIAL CARE. CITROËNS ARE RENOWNED FOR THEIR RELIABILITY – AND CITROËN DS4 IS NO EXCEPTION.

WITH THE ADDED REASSURANCE OF A WARRANTY, ROUTINE SERVICING AND MAINTENANCE, AS WELL AS 24-HOUR ROADSIDE ASSISTANCE, YOU ARE PROTECTED.

CITROËN WARRANTY

Every new Citroën car has the benefit of a 3 year* warranty package, plus a 12 year anti-perforation** warranty and a 3 year paint warranty.

* 2 years' unlimited warranty. No-fee customer option of 1 year's Dealer provided warranty, only on cars sourced from Citroën UK Limited. Note: Dealer provided warranty is limited to 60,000 miles for cars.

** Against all internal to external perforation to bodywork or underbody.

CITROËN ASSISTANCE

In response to a free telephone call in the UK, Citroën Assistance brings rapid expert roadside assistance to you in an emergency. It comes free of charge for a full year and operates 24 hours a day in all parts of the UK and Europe. Services include nationwide recovery for both car and passengers, a home call service, replacement vehicle, hotel accommodation and vehicle storage if required. Please note, Citroën Assistance only applies to incidents covered by the new vehicle warranty, and excludes non-vehicle faults, such as running out of fuel, mis-fuelling, loss of keys, lock-ins, road traffic accidents and punctures/wheel changes.

Full details are available on request from Citroën UK via cuk_contactcentre@citroen.com

CITROËN MAINTENANCE

From roadside assistance to replacing wear and tear parts or regular servicing, with Citroën Maintenance you have total peace of mind. For a one-off fee or low monthly payment, our experienced engineers will take care of your Citroën, whatever happens.

To find out more, contact your Citroën Dealer or Citroën Authorised Repairer.

CITROËN SERVICING

Available up to 1 year from your vehicle's registration date, but before its first chargeable service, a Citroën Servicing Package enables you to pay in advance for your vehicle's servicing needs for 3 years/35,000 miles.

For further information, please contact your Citroën Dealer.

GLOSSARY

> e-HDi DIESEL ENGINE

The e-HDi 115 Airdream EGS6 engine is capable of 64.2 mpg and CO₂ emissions of just 114g/km combined with the EGS gearbox. It has a reversible starter-alternator that works in tandem with an e-boosters to provide a seamless Stop & Start function. Going further than other similar systems, the e-HDi's Stop & Start puts the engine into idle mode while decelerating before coming to a complete standstill. This reduces consumption by 15% in urban driving.

> HIGH-PRESSURE DIRECT INJECTION DIESEL ENGINE

Citroën's HDi diesel engines operate with the fuel under extremely high pressure, enabling microscopically precise injection control. With this level of management it's possible to inject at different times during the same engine stroke allowing total control over the combustion process. This has allowed our engineers to reduce carbon monoxide emissions by 40%, unburned hydrocarbons by 50% and engine particulates by 60%. Fuel consumption is 20% lower than a prechamber diesel engine, resulting in an equivalent reduction in CO₂ emissions.

> PETROL ENGINES

Part of Citroën's range of state-of-the-art engines, VTi and THP petrol powertrains are friction optimised and benefit from an inlet camshaft variable valve timing system that constantly measures the pressure on the accelerator and precisely regulates the quantity of air entering the cylinders. VTi engines boast advanced variable inlet valve lift and exhaust camshaft variable valve timing systems whilst THP engines are turbocharged. This guarantees outstanding efficiency and allows for immediate response with plenty of low range torque available.

> CITROËN ETOUCH EMERGENCY AND ASSISTANCE SYSTEM

In the event of an accident or sudden health problem, one push of the 'SOS' button will instantly contact the emergency services. If there's a more serious incident, SOS activates automatically. After a breakdown, one push on the 'chevron' button will alert Citroën Assistance, sending both location details and an initial fault report.

> CONNECTING BOX

Integrated Bluetooth® hands-free phone function with USB socket and jack to plug in a portable MP3 player.

> EMYWAY SATELLITE NAVIGATION SYSTEM

The eMyWay satellite navigation system features a 7" screen and covers UK and Europe. Its in-built memory provides information about speed limits and lets you know which lane to use when reaching complex intersections. The system also lets you adapt your route based on traffic conditions, with data provided by Trafficmaster and ViaMichelin in the UK and France.

> ANTI-LOCK BRAKING SYSTEM (ABS)

Computer-controlled braking assistance designed to prevent the wheels from locking under extreme braking. This enables the car to continue being steered and therefore controlled during this braking incident. Citroën DS4's ABS system is further enhanced with EBA and EBD.

> ELECTRONIC BRAKEFORCE DISTRIBUTION (EBD)

A conventional ABS system cannot account for any of the four wheels wanting to lock more quickly than the others (for example, two of the wheels may be on snow and two on tarmac). EBD reads the deceleration rate of each wheel individually and applies the ABS principles accordingly.

> EMERGENCY BRAKING ASSISTANCE (EBA)

As drivers we find it difficult to instinctively brake very hard, but this is often what is needed in those rare emergency situations. The EBA system recognises our 'attempt' to brake hard and in combination with the ABS and EBD systems instantly applies the maximum stopping power possible.

> ELECTRONIC STABILITY PROGRAMME (ESP)

This is computer-controlled traction assistance and is provided primarily through the braking systems. The ESP's control unit constantly compares where the driver intends going (through the position of the steering wheel) with where the vehicle is actually going and, if necessary, makes speed corrections to each wheel individually through braking or engine torque to keep the vehicle 'in line'.

> ON-BOARD TRIP COMPUTER

Citroën DS4's multi-function on-board trip computer provides you with information at your fingertips. At the touch of a button you can view a range of data like fuel consumption, average speed and mileage possible at your current fuel level.

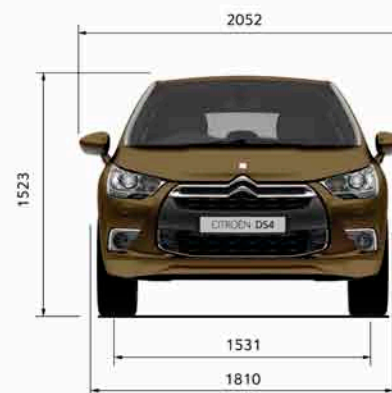
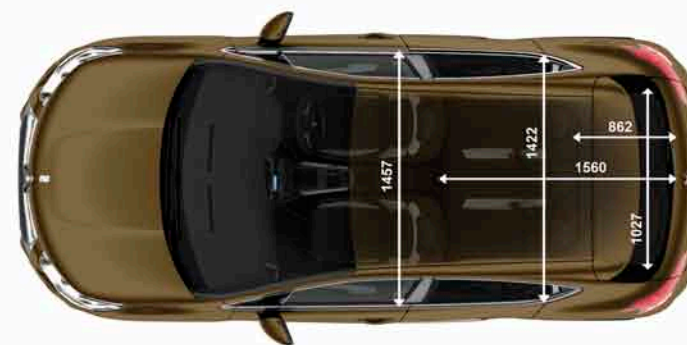
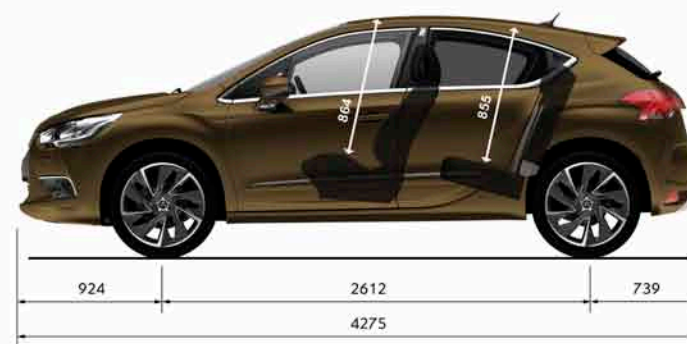
> FRONT SEAT BELT PRE-TENSIONERS

In the event of a crash, a pre-tensioner will tighten the seat belt almost instantaneously. This reduces the load on the occupant in a violent crash. Like airbags, pre-tensioners are triggered by sensors in the car's body, and use explosively expanding gas to drive a piston that retracts the belt. Seat belt pre-tensioners also lower the risk of 'submarining', which is when a passenger slides forward under a loosely worn seat belt.

> ISOFIX

A standardised and more simple method for installing child seats, each seat is 'clicked' into place via a three point system. On Citroën DS4, Isofix is installed on the outer rear seats.

DIMENSIONS



All measurements are in millimetres.



This brochure is made from paper from a well-managed forest. Citroën support responsible use of forest resources.

Please don't throw me away, give me to a friend or recycle me.

NOTE: Every endeavour has been made to ensure that the information and details contained in this brochure were accurate at the time of going to press August 2013. However the company reserves the right, whilst preserving the essential characteristics of the models described, to introduce at any time modifications, changes of details, equipment or accessories. Every effort will be made to bring this brochure up to date, but in order to avoid any misunderstandings please consult your Dealer. For full details of Citroën Care for Car and Driver, please see the full manufacturer's price list. The Citroën Website contains full information on all Citroën products and offers available in the UK, together with details of our environmental and recycling policies. The site address is: www.citroen.co.uk or you can contact Citroën directly via cuk_contactcentre@citroen.com

CITROËN prefers **TOTAL**

CITROËN UK Ltd. 221 Bath Road, Slough SL1 4BA.

www.citroen.co.uk

Designed and produced by Acuity

www.weareacuity.com

K12273 August 2013