



**ANOTHER DAY. ANOTHER ADVENTURE.
THE NEW MINI ROADSTER.**

MAKING EVERY CORNER A BREATH OF FRESH AIR.

Now every corner is an experience to remember. Laid-back styling, smart technology and the trademark MINI driving experience make this two-seater a stimulating companion on any road trip. The punchy engine of the MINI Roadster powers it on towards its next adventure. And if you'd rather face that with the roof up, all it takes is a matter of seconds.







STYLE AND PRACTICALITY? CHECK.

Packed with good ideas: the roll-over bar in polished stainless steel, an automatically extending active rear spoiler and a through-loading hatch between the cabin and the 240-litre luggage compartment. Features designed with the head, so you can follow your heart, and enjoy motoring unplugged.

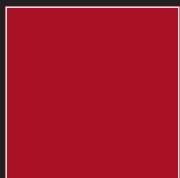


SHOW YOUR TRUE COLOURS.

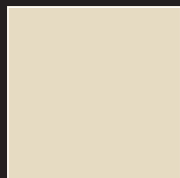
The MINI Roadster is available in two non-metallic and six metallic paint finishes. Pepper White? Chili Red? Or Spice Orange, maybe? Whichever you choose, you're guaranteed to look good. And in the great tradition of British headwear, there's a fabric soft-top in Black to top it all off. The armrest in the door and the knee roll are available in five Colour Line colours, while there is a choice of seven different options for the interior surfaces. And then there's the 13 different upholsteries on offer for the seats. Good luck choosing!

EXTERIOR COLOURS.

NON-METALLIC COLOURS.

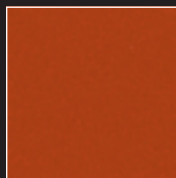


851
Chili Red

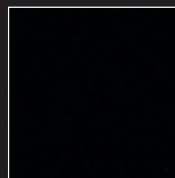


850
Pepper White

METALLIC COLOURS.



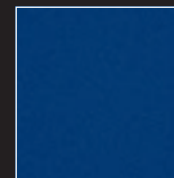
B23
Spice Orange
Metallic



A94
Midnight Black
Metallic

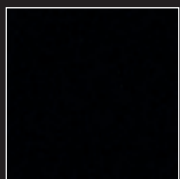


B22
British Racing Green II
Metallic

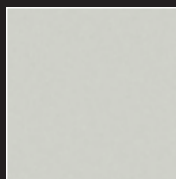


A63
Lightning Blue
Metallic

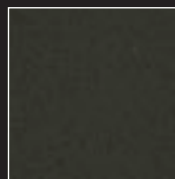
SOFT-TOP COLOUR.



Black



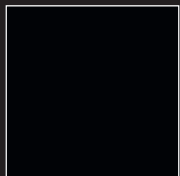
A62
White Silver
Metallic



B24
Eclipse Grey
Metallic

INTERIOR EQUIPMENT.

INTERIOR SURFACES.

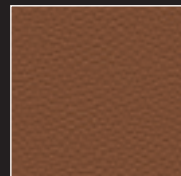


4BD
Piano Black

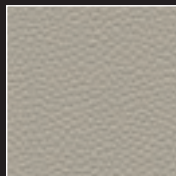


4DA
Striped Alloy

COLOUR LINE.

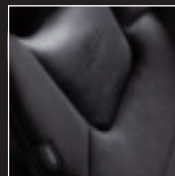


4CN
Toffee

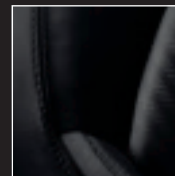


4C3
Satellite Grey

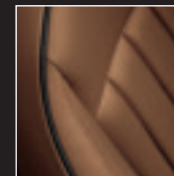
UPHOLSTERY AND SEATS.



4FA
Recaro sport seat
in Dinamica/leather³
Carbon Black



T8FP
Punch leather^{1,2}
Carbon Black/Beige



T9DT
Lounge leather^{1,2}
Toffee

MINI.CO.UK/CONFIGURATOR

MINI.co.uk



<http://www.facebook.com/MINI.uk>

This page shows just a small selection of the available interior equipment. The full range of upholsteries, surface finishes and Colour Lines can be found in the MINI Configurator.

¹ Only for sport seat.

² Leather upholstery includes seats (base and backrest), and front and rear headrests.

³ Expected to be available from end of 2011.



ROCK 'N' ROADSTER.

Following in the tyre tracks of a legend: the first MINI John Cooper Works Roadster has a rich tradition of driving fun to live up to. For extra excitement, it comes with a Sport button and an overboost function. An exciting range of interior equipment and the exclusive optional Recaro sport seats are sure to get hearts beating even faster. So climb in, and get ready to rock.



ENGINE ^{1,2}		MINI COOPER ROADSTER	MINI COOPER S ROADSTER	MINI COOPER SD ROADSTER	MINI JOHN COOPER WORKS ROADSTER
Cylinders/layout/valves per cylinder		4/in-line/4	4/in-line/4	4/in-line/4	4/in-line/4
Displacement	cm ³	1598	1598	1995	1598
Stroke/bore	mm	85.8/77.0	85.8/77.0	90.0/84.0	85.8/77.0
Max. output/max. revs	hp (kW)/rpm	122 (90)/6000	184 (135)/5500	143 (105)/4000	211 (155)/6000
Max. torque/revs	Nm/rpm	160/4250	240/1600–5000 (260/1730–4500) ³	305/1750–2700	260/1850–5600 (280/2000–5100) ³
Compression ratio/recommended fuel	:1	11.0/91–98 RON	10.5/91–98 RON	16.5/diesel	10.0/91–98 RON
PERFORMANCE¹					
Max. speed	mph km/h	124 [119] 199 [192]	141 [138] 227 [222]	132 [127] 212 [204]	147 237
Acceleration 0–62 mph (0–100 km/h)	sec.	9.2 [10.5]	7.0 [7.2]	8.1 [8.3]	6.5
Acceleration 50–75 mph (80–120 km/h) (4th/5th gear)	sec.	9.8/12.4	5.8/7.2	6.7/8.0	5.3/6.3
FUEL CONSUMPTION^{1,2}					
Urban	mpg l/100 km	39.2 [31.7] 7.2 [8.9]	37.7 [31.0] 7.5 [9.1]	53.3 [39.8] 5.3 [7.1]	29.4 9.6
Extra-urban	mpg l/100 km	57.6 [53.3] 4.9 [5.3]	55.4 [55.4] 5.1 [5.1]	70.6 [64.2] 4.0 [4.4]	47.9 5.9
Combined	mpg l/100 km	49.6 [42.8] 5.7 [6.6]	47.1 [42.8] 6.0 [6.6]	62.8 [52.3] 4.5 [5.4]	38.7 7.3
CO ₂ emissions (combined)	g/km	133 [154]	139 [153]	118 [143]	169
Tank capacity, approx.	litres	40	50	40	50
Range	miles km	436 [377] 702 [606]	519 [472] 835 [760]	553 [460] 890 [740]	426 685
WEIGHT¹/LUGGAGE CAPACITY¹					
Unladen weight (EU) ⁴	kg	1195 [1235]	1260 [1280]	1275 [1290]	1260
Max. permitted weight	kg	1410 [1450]	1475 [1495]	1490 [1505]	1475
Max. permitted load	kg	290	290	290	290
Max. permitted axle load, front/rear	kg	820/610 [855/610]	870/620 [895/620]	890/620 [905/620]	865/630
Length/width/height	mm	3728/1683/1384	3734/1683/1390	3734/1683/1390	3758/1683/1391
Luggage capacity	litres	240	240	240	240
WHEELS					
Tyre dimensions, front/rear		175/65 R 15 84H	195/55 R 16 87V	195/55 R 16 87V	205/45 R 17 84W
Wheel dimensions, front/rear		5.5 J x 15 light-alloy	6.5 J x 16 light-alloy	6.5 J x 16 light-alloy	7.0 J x 17 light-alloy

¹ Preliminary figures at time of going to print, subject to change. All figures relate to vehicles with the standard six-speed manual transmission. Figures in square brackets relate to vehicles with six-speed Automatic Transmission Steptronic.

² All MINI models comply with the EU5 exhaust emissions standard. Fuel consumption is determined in accordance with the ECE driving cycle (as defined in directive 80/1268/EEC), made up of approximately one third urban and two thirds extra-urban driving (based on the distance covered). CO₂ emissions are measured separately from fuel consumption. Figures relate to standard-specification vehicles, and may vary significantly where optional equipment (including wider tyres) is fitted.

³ With overboost function.

⁴ Assuming car is fuelled to 90% of usable tank capacity, and allowing 68 kilograms for the driver and 7 kilograms for luggage. Figure quoted is for standard-specification vehicles. Optional equipment may increase this figure.