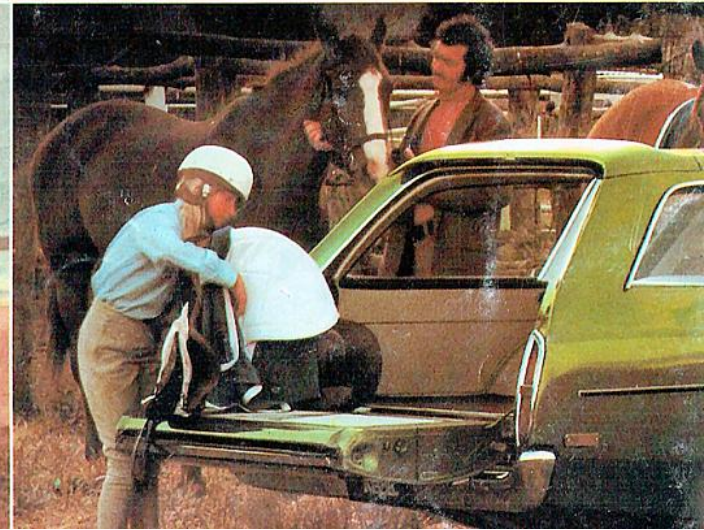
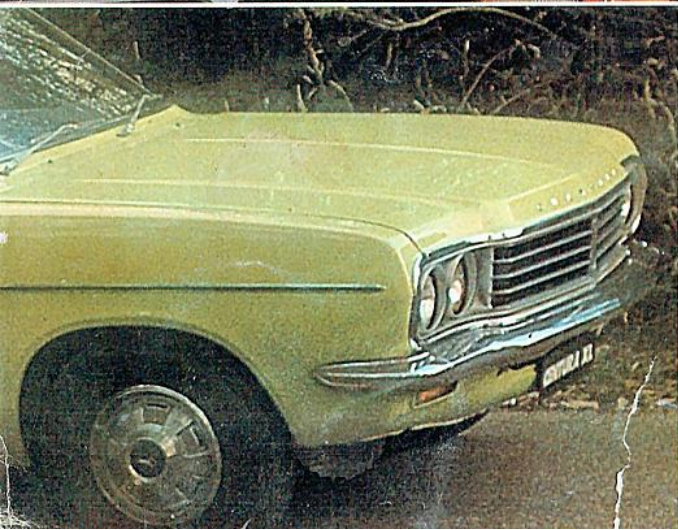


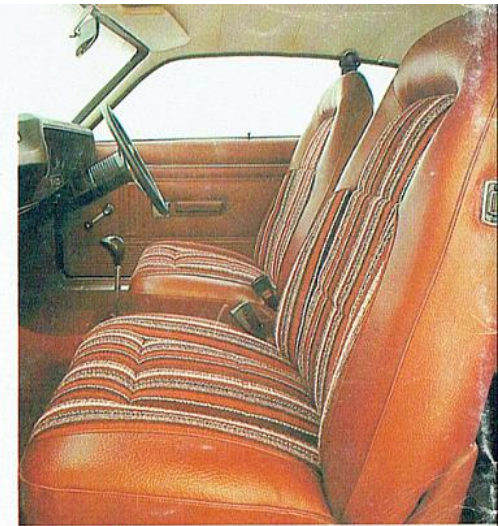
CHRYSLER CARS





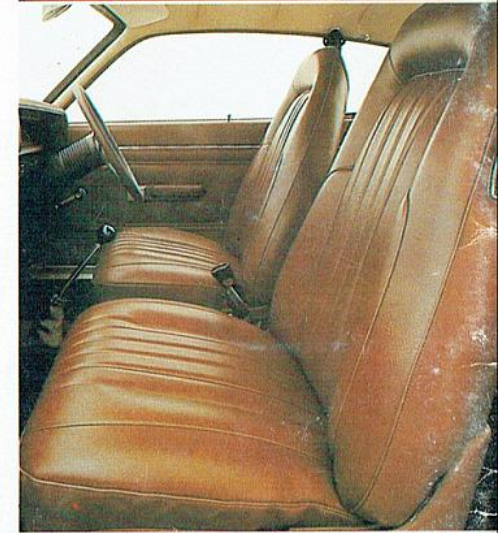
Getaway from the dull life with the Charger 770 escape machine. A 4.0 litre Hemi 6 with dual throat carburettor and three on the floor keeps you out in front.

Cloth seat trim and tachometer set in woodgrain dash puts you in command.



Get that sporty feeling with the Charger XL. Fastback styling with power to spare from Chrysler's hemi engine and dual throat carburettor.

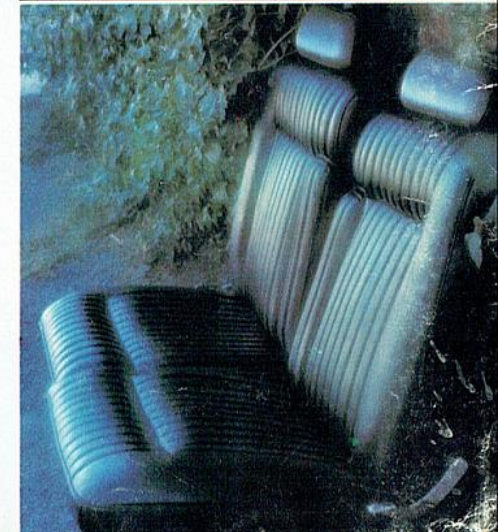
Inside—reclining bucket seats, 3 spoke sports steering wheel, full carpeting and rear quarter flip out windows.



The Chrysler, with deep pile carpet, woodgrain instrument panel and richly padded seats is Australia's ultimate luxury car.

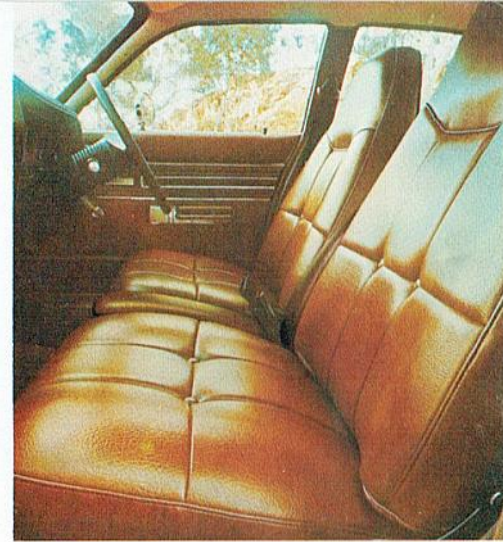
Features you'd expect in a motor car of this breed include radio, electric clock, rear compartment reading lamps and heated rear window.

Airconditioning and power windows, power driver's seat and cloth seating are available options.



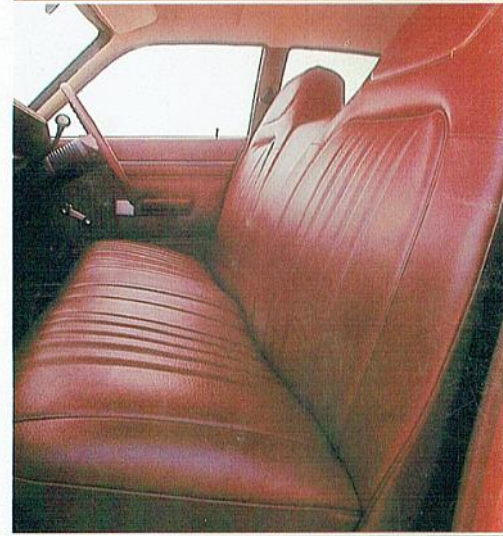


The Valiant Regal has standard features that are anything but standard. Automatic transmission, reclining bucket seats, heated rear window, radial tyres. Pushbutton radio and electric clock are set into a handsome woodgrain instrument panel.

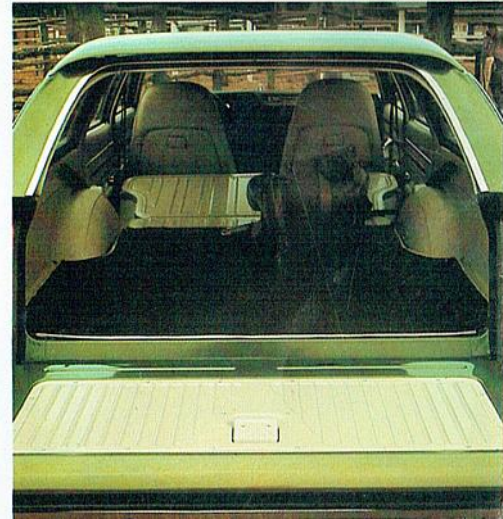


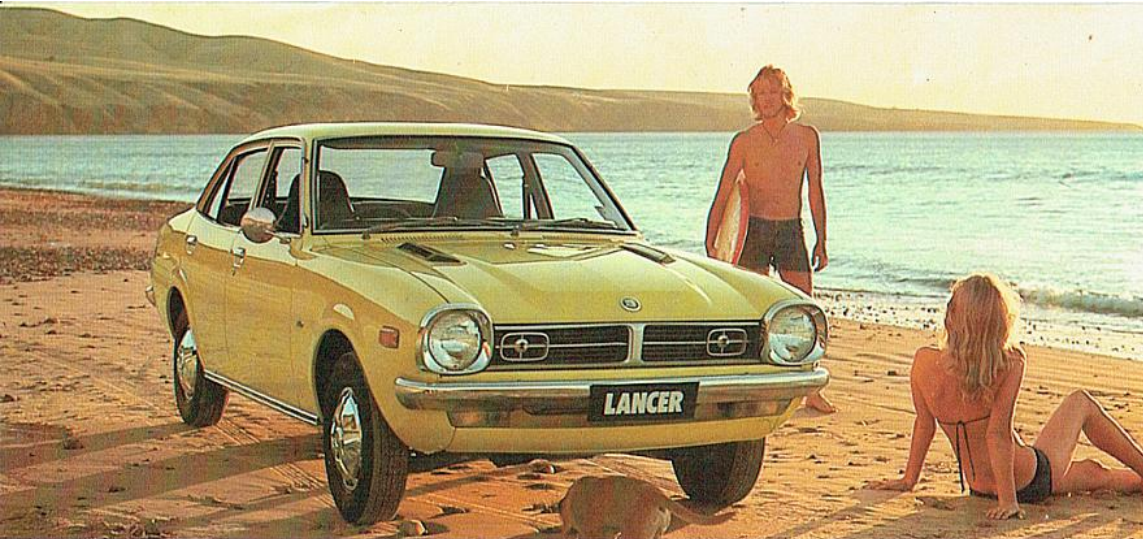
For all the good times it's the Valiant Ranger. The family car with power and comfort.

Power assisted front disc brakes and rear drums, plus pressure sensitive proportioning valve braking put safety first on family vacations. Plus there's a new towing package option that gives you everything from heavy duty suspension to large capacity radiator.



The Valiant station wagon is available in both a Ranger or Regal version. You get all the features and comfort of the sedans plus the largest load capacity in its class. Including nice little features like electrically operated tailgate window and cargo compartment light on the Regal.





Lancer from Japan. A proven performer with three Southern Cross Rally wins. Powered by a 1400 OHC Saturn engine. Luxury features include reclining bucket seats, woodgrain instrument panel, adjustable tilt steering wheel plus electric clock and radio.



For the connoisseur of fine cars it's the Galant Hardtop. Limited edition, fully imported from Japan. Loaded with style and features inside and out. Reclining cloth/vinyl bucket seats, adjustable tilt steering, heated rear window. Clock, radio and tachometer are set off in woodgrain finish instrument panel and centre console.



The Galant sport pack is available on XL or GL with all the features of the four door plus sportstripe, sports road wheels, Boca raton cloth seats, 3-spoke sports steering wheel, tachometer, radial ply tyres, and centre console.





Galant XL. The Japanese favourite from Mitsubishi. A 1600 Saturn engine with a four speed box is backed up by disc brakes, plus MacPherson strut front suspension.

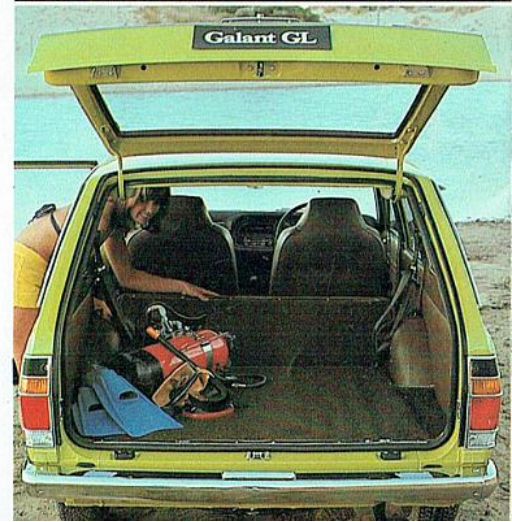
With adjustable tilt steering, flow through ventilation and reclining bucket seats, it's big comfort with small car economy.



The Galant GL adds a further touch of luxury with the addition of centre console, push button radio, electric clock and handsome woodgrain instrument panel.



Galant station wagon. All the features of an XL or GL Galant plus loads of room for family, friends, and vacations. Seats fold down quick and easy for a load capacity of 68.8 cu. ft.





In the long stretch the Centura XL beats all the competitors in both front and back seat measurements. And to add to that comfort, front bucket seats are reclining.

There's radial tyres with front disc brakes, backed up by load sensitive proportioning valve braking. Choice of 4 and 6 cylinder engines.



Additional features make the Centura GL one of Australia's finest medium range motor cars. Vinyl roof and side protection moulding set the Centura GL apart from the pack. Tachometer, electric clock and centre console add to the overall feeling of driver comfort.



Whichever you choose: Centura XL or GL, the Centura sportspack will put you ahead. Styled road wheels (6 cylinder only) and stripe treatment give you that sporty look on the outside, and a good-looking inside with Boca raton cloth seat trim inserts and tachometer.

