

CHRYSLER CHARGER



THE CHARGER 770 COMMITMENT.

The world is routine enough without choosing a car that adds to it.

And while there are dozens of dull, wishy-washy cars only too willing to turn your driving into a chore, there is one fully committed to the exhilaration of escape.

The new Charger 770.

This year it adds to the excitement generated when Charger was first introduced.

A new white-out grille lets you bare your teeth and bold new colours once again make Charger the styling innovator.

A new rear-end treatment lets you show the good life to a grey world you've left behind.

Styled road wheels add both beauty and function.

And when it comes to your safety, again there are no maybe's.

Radial tyres are standard.

And a braking system that combines power-assisted disc-brakes up the front and drums at the rear coupled to a special Pressure Proportioning Valve that controls the distribution of brake pedal pressure to the rear wheels.

A system that minimises rear wheel lock-up to stop you safely in a straight line.

Retractable seat belts and hazard warning lights add further to your safety and convenience.



Inside, Charger 770 asks you to indulge yourself in a life of luxury.

Floor level cabin lighting makes you feel welcome. (There's even a light in the boot.)

Those high backed bucket seats are fully reclining.

For added seating comfort, bold pattern cloth inserts keep you cool on the hottest days. And cosy on the coldest.

Rich loop-pile carpet is of course underfoot.

Now glance across the new woodgrain finish instrument panel.

Like a Hi-Fi, it's designed to be both functional and elegant.

A tachometer is standard equipment in keeping with a performance that is far from standard.

Vital controls such as wipers, washers, headlight flashers and dipper are grouped on a steering column stalk to be close at hand.

And repeater lights neatly mounted on each wing let you know at a glance that turn indicators are in operation.

Now, all that remains is to experience the machinery that makes 770 one of the most agile and athletic sports coupes on the road.

THE CHARGER XL COMMITMENT.

The Charger XL is for the man who wants the Charger commitment.

But at a smaller financial commitment.

Outside, the XL is the perfect blend of sports and sophistication.

Bodyside mouldings highlight the unmistakable Charger lines.

A new White-Out grille and re-vamped rear-end shows that Charger once again is the styling innovator.

Now, step inside to a new interior treatment that will have the competitors checking out for ideas.

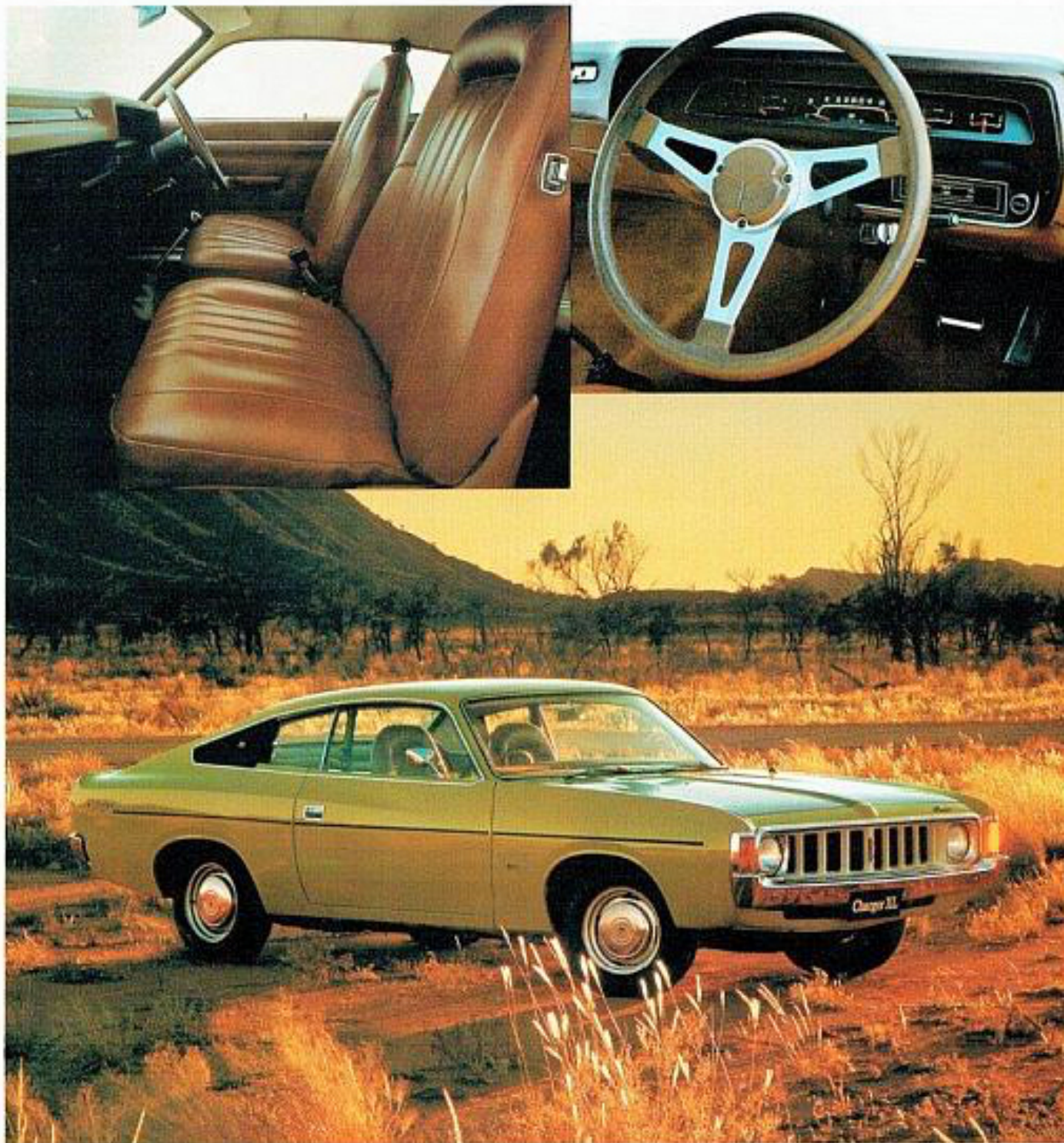
The high backed bucket seats are fully reclining, so you can adjust to the long arm, or short arm driving technique.

The standard 3-speed floor shift falls easily to hand.

Vital controls are grouped on a steering column stalk for ease of use.

A chunky 3-spoke padded steering wheel is new.

Ventilation on both left and right hand sides of the car is adjustable in motion by the driver for convenience.



And like the 770, there's nothing wishy-washy about XL safety.

For shorter, straight line stops, brakes are a combination of power-assisted disc brakes up front, and drum brakes at rear coupled to a Pressure Proportioning Valve.

Power comes from either the standard Hemi 3.5 litre or the optional 4 litre and 4.3 litre Hemi sixes. All fed by a new 2 barrel carburettor.

All featuring the engineering innovations of Electronic Ignition and Hot Air Intake for a sparkling performance, with energy in reserve, plus faster engine warm-ups from cold starts.

CHARGER OPTIONS.

Charger options let you make the commitment, in your own way.

Both the Charger 770 and XL are committed to your driving pleasure.

In addition, Charger options are available to let you make your own personal statement as well.

Shown here are some of the more popular ones.

The chart overleaf gives you the full list with the availability of each model.

From body stripes to a stereo cassette unit; from air conditioning to a choice of axles.



To give a sporty car even more dash 7" wide-track mag wheels fitted with ER 70 H14 radial ply tyres.

A sports stripe finishes off the package. Three-speed automatic console for the 770.

The final touch to an already beautiful interior.

The console not only neatly houses the auto gear shift, but also provides a handy flip up compartment.

Perfect for keeping small items or your cassettes within easy reach.

Optional 4 speed floor shift manual transmission.

Push button radio.

Puts music at your fingertips.

Radio/stereo unit.

It lets you take your favourite choice of music wherever you drive.

To help pass the miles on a long trip, or the time in traffic.

Dress-up wheel covers for your XL.

6.0" silver styled road wheels fitted with 185 SR radials puts your XL on equal footing with the 770.

A Fuel Pacer to watch your fuel economy.

This is a warning light which tells you when you are not driving economically.



In building Chargers, Chrysler go one better.

First, Electronic Ignition.

Ignition points and condensers have always had the problem of eventually wearing out.

But now, all Chargers are fitted with an exclusive electronic ignition system.

The condenser and points have been eliminated. So they'll never need to be replaced.

Spark plug life is extended. And the tuning won't have to be touched for 80,000 kilometres.

But most importantly, the electronic ignition delivers 35% more starting voltage for sure starts in wet and cold.

And helps to ensure efficient combustion.

Next, Torsion Bar suspension, and Unibody construction.

Torsion bar suspension has been a feature of Charger since it was first introduced. And so has Unibody construction.

The two systems complement each other.

Torsion bars capture the energy of road shock with a twisting action.

In the event of a bad pothole causing a violent shock, any vibration runs up against unitized construction.

There are no body bolts to shake loose or rattle.

Thousands of welds form an incredibly strong unit. Like an air-frame.

Hot Air Intake.

This device simply pre-heats air before being mixed with fuel in the carburettor.

If you combine this Hot Air Intake with Charger's Hemispherical combustion chambers, and electronic ignition it results in more efficient combustion and a minimisation of exhaust emission.

Painting with Electricity.

The Electrophoretic dip is the process used to prime all Charger bodies.

The body is placed in a tank-full of primer which has an electric current running through it.

It greatly improves rust resistance because the primer bonds with the body and penetrates into every little crevice.

Dimensions, Weights and Capacities.

Overall Length: XL—4559 mm (179.5"), 770—5600 mm (181.0"). Overall Width: 1901 mm (74.8"). Overall Height: 1374 mm (54.1"). Wheelbase: 2667 mm (105.0"). Track: Front XL—1481 mm (58.32"), 770—1494 mm (58.82"). Track: Rear XL 1492 mm (58.72"), 770 1504 mm (59.22"). Turning

Circle: 11.3 metres (37.0 ft.). Trunk Capacity: 0.623 m (22.0 cu. ft.) Kerb Weight: XL—1352 kg (2981 lb), 770 1402 kg (3091 lb) 6 cylinder, 1460 kg (3219 lb) 8 cylinder. Fuel Tank Capacity: 68.2 litres (45.0 galls).

Transmissions.

Manual 3-speed floor shift standard. Automatic 3-speed column shift optional XL; Floor shift with console optional on 770. Manual 4-speed floor shift optional.

Clutch.

Type: Single dry plate with Diaphragm. Pressure plate. Size: 241 mm (9.5") diameter.

Rear Axle.

Type: Semi-floating Hypoid gear drive.

Suspension.

Front: Independent with Torsion Bar and dual action hydraulic telescopic shock absorbers. Anti-sway bar on 770. Rear: Leaf springs with dual acting hydraulic telescopic shock absorbers.

Steering.

Manual Steering: Recirculating ball and nut. Turn lock to lock—4.5. Power Steering: Constant control (Co-axial). Turn lock to lock—3.5.

Brakes.

Power booster with Pressure Sensitive Proportioning Valve. Front: 279 mm (11.0") diameter disc. Rear 229 mm (9.0") diameter drum. Tandem Master Cylinder.

Wheels and Tyres.

Wheels: XL—14" x 5.5" JJ. 770 14" x 6.0" JJ styled road wheels. Tyres: XL—6.95S14 x 4 Ply BSW. 770—485SR14 x 4 Ply BSW Radials.

Instrumentation.

Speedometer. Odometer. Ammeter. Tachometer (770). Fuel gauge. Oil pressure warning light. Water temperature gauge. Braking system and hand brake warning light. High beam warning light. Turn signal indicators.

Colour Information.

Separate literature is available.

Comfort/Convenience Items.

Carpets. Reclining high backed bucket seats. 3-spoke steering wheel with centre horn pad. Reversible keys for doors and steering column/ignition locks. Ash trays front and rear. Fresh flow ventilation left and right hand sides with driver control tabs. Interior courtesy light. Coat hooks. Cigar lighter. Door courtesy light switches. Quiet door locks. Padded armrests, front only. Multi-operations stalk control switch. Extensive sound insulation. Heater/demister. Rear quarter "flip-out" windows. Boot lamp. Lockable glove box. Bodyside moulding. Additional features on 770. Woodgrain instrument panel with tachometer. Cloth seat trim. Floor level, glove box, ash receiver and engine compartment lighting. Dual horns. Vanity mirror.

Safety Features.

Retractable front seat belts. Integral head restraints. 360° energy absorbing steering column. Dual master cylinder braking system—front discs and braking pressure proportioning valve. Cable-operated hand brake, floor mounted with warning light. Flush fitting door handles—side impact protected—non override. Padded steering wheel hub. Power-operated windscreen washers. Anti-lift wipers. Safety padded sunvisors, armrest and door handles with soft knob window regulators. Cushioned instrument panel. Break away interior rear-view mirror. Reversing lamps. Anti-glare instrument panel. Double engine hood latch with interior release. Safety-zone toughened windshield. Double-sided safety wheel rims. Fusible link wiring. Variable instrument lighting. Solid unibody construction. Hazard warning system. Door reflectors. Additional features on 770—anti-sway bar, radial ply tyres.

Options	XL	770
Centre Cushion Armrest (Auto only)	○	N/A
Tinted Graduated Laminated Windscreen	○	○
Heated Rear Window	○	○
Air Conditioning (N/A with 3.5 litre engine)	○	○
Radio Stereo Cassette Player	○	○
Radio—Push Button	○	○
185 SR 14 BSW Radial Tyres	○	X
ER70H14 BSW Radial Tyres	○	○
Wheel Covers	○	N/A
Sports Stripe	○	○
Cast Alloy Road Wheels—7.0" Rim (Requires ER70H14 BSW Radial Tyres)	○	○
Styled Road Wheels—6.0" Rim (Requires 185SR14 BSW or ER70H14 BSW Radial Tyres)	○	X
Power Steering	N/A	○
Heavy Duty Suspension	○	○
4 Speed Manual Floor Transmission	○	○
Automatic Transmission—Column Shift	○	N/A
Automatic Transmission—Floor Console Shift	N/A	○
Fuel Pacer—to watch fuel economy	○	○
2.92:1 Sure Grip Rear Axle (N/A with 3.5 or 5.9 litre engines)	○	○
4.0 litre (245 cu. in.) 6 cylinder engine	○	X
4.3 litre (265 cu. in.) 6 cylinder engine	○	○
5.2 litre (318 cu. in.) V8 engine	N/A	○
5.9 litre (360 cu. in.) V8 engine	N/A	○

N/A = Not Available ○ = Optional X = Standard

Our 12 month/unlimited mileage warranty.

Chrysler are always out to build better cars.

And now there's further proof. All Chargers are now covered by a 12 months/unlimited mileage warranty.

So you can drive as far as you want in the first year with full warranty protection.

We're the first Australian car manufacturer to show this kind of confidence in its products.

It just goes to show how deeply Charger is committed to your driving pleasure.



All product illustrations and specification are based on authorized information. Although descriptions are believed correct at publication approval, accuracy cannot be guaranteed. Some of the equipment shown on product illustrations is optional, at extra cost. Chrysler Australia Limited reserves the right to make changes from time to time without notice or obligation, in prices, specifications, colours and materials, and to change or discontinue models.

ENGINE DETAILS	6 cylinder 3.5 litre (Standard on XL only)	6 cylinder 4.0 litre (Standard on 770 and Optional on XL)	6 cylinder 4.3 litre (Optional)	8 cylinder 5.2 litre (Optional on 770 only)	8 cylinder 5.9 litre (optional on 770 only)
Type	6 cyl. OHV	6 cyl. OHV	6 cyl. OHV	8 cyl. "Vee" OHV	8 cyl. "Vee" OHV
Capacity	3523 cc (215 cu. in.)	4015 cc (245 cu. in.)	4345 cc (265 cu. in.)	5211 cc (318 cu. in.)	5898 cc (360 cu. in.)
Compression Ratio	8.0:1	9.5:1	9.5:1	9.2:1	8.8:1
Carburettor	Two barrel with automatic choke	Two barrel with automatic choke	Two barrel with automatic choke	Two barrel with automatic choke	Two barrel with automatic choke
Ignition System	Electronic	Electronic	Electronic	Electronic	Electronic
Fuel	Standard	Premium	Premium	Premium	Premium