



1 9 9 7 C H R Y S L E R C I R R U S



The Cirrus Balance.

So well balanced is the luxurious Cirrus that its Chrysler engineers have succeeded in fusing the appearance and feel of a sporty two-door with the cultivated amenities and comforting safety of a four-door, thereby setting a whole new standard for the class.

Cirrus, whether a top-of-the-line LXi or the nicely equipped LX. It's not just a step above. It's the new plateau.

SPORTY IS THE MOST APT DESCRIPTION. Like premium

Lexus models, Cirrus is built around **rail-through** construction — two continuous underbody rails of high-strength steel running uninterrupted from the front of the car

straight to the rear — giving Cirrus **best-in-class** body stiffness. The stiffer a car's framework the less

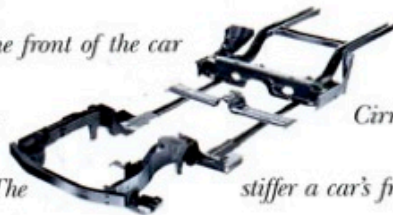
it will shake. Add a modified double-wishbone suspension to the mix, and you have an exceptionally sporty and quiet ride.

Cirrus' four-wheel **antilock brakes** prevent lockup during hard braking, allowing you to maintain steering control.

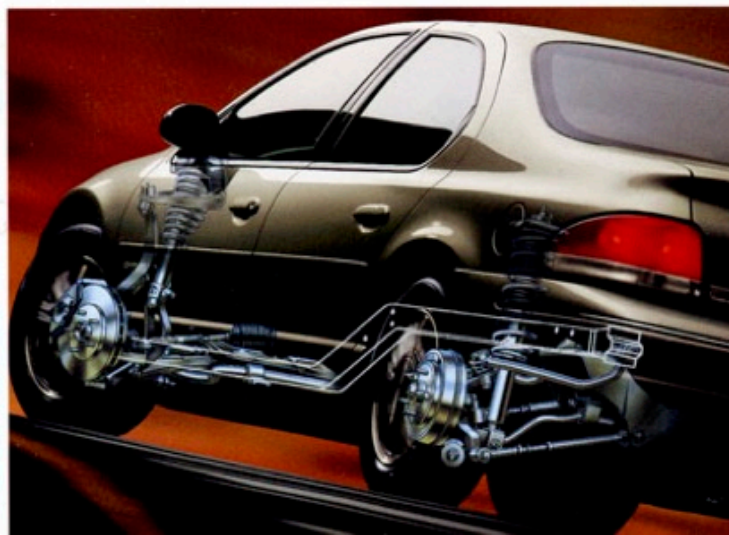
Controlled electronically for optimum shift points, the four-speed automatic "learns" your driving mannerisms. Speed-sensitive power steering provides low effort for slow speeds and parking, and a sports-car feel at highway speeds. Highway merges

are a cinch with the twin counterbalance shaft smooth **2.4-liter DOHC SMPI 16-valve four-**

cylinder engine that generates 150 hp at 5,200 rpm.



A 168-horsepower 2.5-liter SOHC SMPI 24-valve V6 power plant is available on LX and LXi.



Cirrus' four-wheel fully independent modified double-wishbone suspension handles with precision.



LXi is equipped with a sport suspension, 15-inch chrome aluminum wheels and a Vehicle Theft Alarm.

CAB FORWARD MAKES WAY FOR MORE LUXURY

INSIDE. *Cirrus' cab-forward innovations create a sleek, aerodynamic appearance; an incredibly spacious interior; and a stable, ultra-quiet ride.*

The sound of silence  *can be broken by turning on LXi's* **100-watt premium**

audio system that boasts a cassette player, eight speakers in six locations and an independent amplifier tucked neatly under the front-passenger seat. Seating on LXi features the luxury of supple



Nearly 96 cubic feet of interior volume makes Cirrus roomier than Accord, Altima, Contour and Mystique.



leather trim and an eight-way power driver seat. The HomeLink® Universal Transmitter replaces the hand-held garage door opener.

Power windows and door locks are close at hand, while a handy folding rear seatback makes way for bulky goods.

The award-winning Integrated Child Safety Seat® option provides foldaway security. Security also comes



in the form of driver and front-passenger air bags,¹ dynamic side-impact protection, remote keyless entry, illuminated entry and a panic alarm.

Air conditioning, electronic speed control and a Personal Security Group are standard.



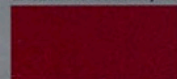
^{*}Includes fixed rear seatback. Not available on LXi.
¹Always wear your seat belts.



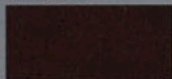
Cirrus LXi

Since the time of printing, some of the information you'll find in this catalog may have been updated. Ask your dealer for details. Some of the equipment shown or described throughout this catalog is available at extra cost.

EXTERIOR COLORS/INTERIOR COLORS



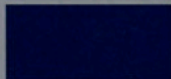
Candy Apple Red Metallic Tint
Interior: Camel



Dark Chestnut Pearl Coat
Interior: Camel



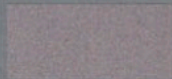
Light Driftwood Pearl Coat*
Interior: Mist Gray (LX only), Camel



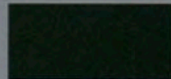
Deep Amethyst Pearl Coat
Interior: Mist Gray (LX only)



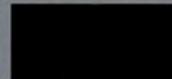
Medium Fern Pearl Coat
Interior: Silver Fern



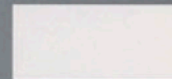
Light Silver Pearl Coat
Interior: Silver Fern



Forest Green Pearl Coat
Interior: Camel



Black
Interior: Mist Gray (LX only), Camel



Stone White
Interior: Mist Gray (LX only), Silver Fern, Camel

*Late availability



Cirrus LXi leather-trimmed interior

FABRICS



Silver Fern leather-trimmed seating



Camel premium cloth seat



Mist Gray premium cloth seat

See dealer for available color and fabric combinations.

Luxury is in the details. Like the new center floor console. Two front and two stowable rear cup holders, an antinattle cubby bin and a handy new armrest are built in. The armrest cover opens to reveal a coin carrier, pen holder and cassette/CD storage rack underneath. The perfect companion for the available AM/FM stereo radio with a cassette player and accompanying in-dash six-disc CD changer.

Go for the Gold Package: Camel interior; Gold accents on Finale cast aluminum wheels; a Gold rear door LX badge; Gold Chrysler front door nameplates; Gold front and rear fascia accent moldings;* and a Gold Chrysler emblem on the special body-color painted front grille. The Gold Package is available only on LX. Not available on Dark Rosewood or Light Iris.



SELECT STANDARD FEATURES

CIRRUS LX

- 2.4-liter DOHC four-cylinder engine
- Four-speed automatic transaxle
- Front-wheel drive
- Four-wheel antilock brakes
- Speed-sensitive rack-and-pinion power steering
- Four-wheel fully independent modified double-wishbone suspension
- Driver and front-passenger air bags[†]
- Dynamic side-impact protection
- Child-protection rear door locks
- Height-adjustable front shoulder belts
- Fog lights
- Air conditioning with rear-seat climate control outlets
- NEW center console and armrest with covered storage that includes coin, pen, CD and cassette holders
- Electronic speed control with steering wheel-mounted controls
- Personal Security Group with remote keyless entry, illuminated entry and panic alarm
- Height-adjustable steering column
- Driver and front-passenger illuminated visor vanity mirrors
- Remote power heated twin-post mirrors
- Power windows with driver's one-touch-down feature
- Power door locks
- AM/FM stereo radio with cassette player
- HomeLink[®] Universal Transmitter
- Premium cloth bucket seats with manual driver-seat height adjuster

- Premium cloth rear bench seat with folding seatback
- Dual front cup holders
- Two rear stowable cup holders
- Assist handles for front and rear passengers
- Speed-sensitive intermittent windshield wipers
- Electric rear window defroster
- Accessory power outlet
- 15-inch tires and wheels
- Body-color front and rear fascias with bright accent strip
- Tinted glass with Solar-Control windshield
- Chrome grille with Gold Chrysler badge

CIRRUS LXI

- Includes all LX features plus these differences ...
- Leather-trimmed seating with rear-seat head restraints and eight-way power driver's seat
 - Leather-wrapped steering wheel and shift knob
 - Sport suspension with sport-tuned shocks and spring valvings
 - Premium AM/FM stereo radio with cassette, CD changer controls, 100 watts of amplification and eight speakers in six locations
 - 15-inch chrome aluminum wheels
 - 15-inch all-season touring tires
 - Vehicle Theft Alarm
 - Trunk cargo net
 - Body-color grille*

SPECIFICATIONS STANDARD OPTIONAL

	2.4-Liter DOHC 16V SMPI 4-Cylinder	2.5-Liter SOHC 24V SMPI V6 ^{††}
Engine		
Displacement	148.2 CID	152 CID
Compression Ratio	9.4:1	9.4:1
Bore and Stroke	3.44" x 3.98"	3.29" x 3.00"
Fuel System	Sequential Multipoint Electronic Fuel Injection	
Horsepower (SAE net)	150 @ 5,200 rpm	168 @ 5,800 rpm
Torque (lb ft)	167 @ 4,000 rpm	170 @ 4,350 rpm

WEIGHT AND CAPACITIES

Base Curb Weight (lb)	3,099
Fuel Tank (gal)	16
Turning Diameter — Curb-to-curb (ft)	37.0
Maximum Towing Capacity (lb)	1,000

EXTERIOR DIMENSIONS⁽²⁾

Wheelbase	108.0
Overall Length	186.0
Overall Width	71.0
Overall Height	54.1
Track — Front	60.2
— Rear	60.2
Coefficient of Drag (Cd)	0.31

INTERIOR DIMENSIONS⁽²⁾

Head Room — Front	38.1
— Rear	36.8
Leg Room — Front	42.3
— Rear	38.1
Hip Room — Front	52.8
— Rear	52.7
Shoulder Room — Front	55.2
— Rear	54.7
Seating Capacity	5
Passenger Interior Volume (cu ft)	95.9
Cargo Volume (cu ft)	15.7

^{††}Built by Mitsubishi Motors Corporation. ⁽²⁾Dimensions shown in inches unless otherwise specified.
*Chrome on Light Silver Fern and Stone White exterior colors.
[†]Always wear your seat belts. Chrysler is a registered trademark, and Cirrus is a trademark of Chrysler Corporation. HomeLink is a registered trademark of the Prince Corporation.

**FOR MORE INFORMATION
ON PRODUCTS OR LEASING:
1-800-4A-CHRYSLER
<http://www.chryslercars.com>**

What's new in your world?

