

Cadillac



ALL NEW 2015

ATS COUPE



ATS COUPE



NO ONE HAS EVER STOOD OUT
STANDING STILL.



ATS Coupe Premium Collection / Crystal White Tricoat

The look. The feel. Each line tailored to you like a fine suit. With every component designed to thrill. From its glistening form and precise engineering to exceptional handling, ATS stokes the passion of the real driver. So sit back and put the pedal to the metal because ATS was born to go.

THE SPEED

This is the love that goes with the labor. Precise in design. Exact in execution. Flash and substance – all in one package. This is the all new Cadillac ATS Coupe.





ATS Coupe Premium Collection / Opulent Blue Metallic

IT'S NOT ONLY WHERE YOU GO,
BUT HOW YOU GET THERE.



1. Manual transmission available on 2.0L Turbo RWD. 2. Based on EPA-estimated fuel economy for RWD models with automatic transmission: 21 MPG city/30 highway for 2.0L Turbo engine and 18 MPG city/28 highway for 3.6L V6 engine.

Two engine choices let you tailor your ATS Coupe to fit your driving needs. The standard **272-HP 2.0L TURBO** produces an impressive 295 lb.-ft. of torque that you feel every time you press the pedal. Or up the ante with a commanding **321-HP 3.6L V6** engine that powers ATS Coupe from 0 to 60 in just 5.5 seconds.

ATS Coupe includes several performance features that help enhance its overall responsiveness. Choose between a quick-shifting manual transmission¹ or an automatic with steering wheel-mounted **MAGNESIUM PADDLE SHIFTERS**. Both offer a true sense of the drive as you shift gears for optimal performance, while the **ZF PREMIUM STEERING SYSTEM** is speed-sensitive to give you precisely measured responsiveness and electric assist helps save fuel.²



ATS Coupe is boosted by innovative features such as the available class-exclusive **MAGNETIC RIDE CONTROL** suspension – which speed-reads surface conditions up to 1,000 times per second – adjusting the damping for exceptional ride, handling and control. The standard race-inspired **BREMBO® FRONT BRAKES** produce impressive stopping power to help counteract the incredible thrust of the ATS Coupe's engine.



THE FEEL

Crafted and cut to form. It's the kind of refined artistry that not only creates a stunning cabin but is both indulgent and functional.



PREMIUM MATERIALS

Exceptional materials blend with impressive artistry to create a sophisticated cabin with your choice of available supple leathers, including semi-aniline leather, combined with premium available woods, aluminum or carbon fiber trim.



CUT-AND-SEWN INTERIOR

Each interior. Every stitch. Crafted meticulously to create an environment as individual as the driver. Available in five distinct interior themes: Kona Brown with natural finish Sapele wood trim, Jet Black with brushed Aluminum or Okapi Stripe designer wood trim, Light Platinum with high-gloss Sapele wood trim, or Morello Red with Carbon Fiber trim.



ATS Coupe Premium Collection / Kona Brown with Jet Black Accents and Natural Finish Sapele Wood Trim

PROOF LOVE AT FIRST SIGHT
ISN'T A MYTH.



2023 Cadillac Premium Collection / Kona Brown with Jet Black Accents and Natural Finish Sapele Wood Trim



THE LOOKS

Desire starts with a lean, powerful form. Every angle sculpted. Lines flowing seamlessly to create a low profile with a distinctive expression of motion – even when standing still.





ATS Coupe Premium Collection / Crystal White Tricoat



PERFORMANCE DUAL EXHAUST OUTLETS complement the exceptional capability of the ATS Coupe, while **AERO PROFILE MIRRORS** slice through the wind, delivering a stylish appearance with integrated turn signals. Vertical light signatures in the **TAILLAMPS**, as well as an **INTEGRATED BRAKE LAMP**, feature brilliant LEDs, creating a striking look from behind.

Features on the ATS Coupe were designed with both function and form in mind. Like available **ILLUMINATING DOOR HANDLES**, which cast a warm, soft glow at night, providing better handle visibility. Available **HIGH-INTENSITY DISCHARGE HEADLAMPS** feature LED vertical light signatures that give ATS Coupe a look that's pure Cadillac, while **ADAPTIVE FORWARD LIGHTING** swivels those headlamps as the vehicle turns, directing light precisely where you're going. And available **INTELLIBEAM HEADLAMPS** respond to vehicles in front, turning high beams on and off automatically as needed.



MORE THAN JUST GOOD LOOKS
RUNS IN THE FAMILY.



ATS Sedan Premium Collection / Phantom Gray Metallic | ATS Coupe Premium Collection / Black Diamond Tricoat

THE ARCHITECTURE

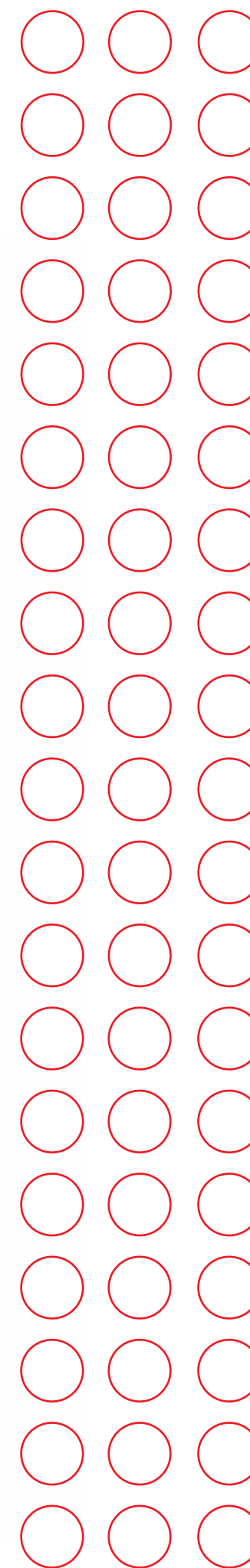
A higher number isn't always an indicator of better performance. When it comes to weight, less is more. Engineers applied an innovative scalloping technique and used lightening holes to lessen the overall vehicle weight – while providing incredible strength and rigidity – helping to make ATS light on its wheels and exceptionally fun to drive.



“EVERY GRAM,
EVERY ENGINEER,
EVERY DAY.”

– David Masch, ATS Chief Engineer

Creating a light yet strong structure is a delicate balancing act. In fact, the closer a vehicle's weight balance is to 50/50, the better the handling and control. So when designing the ATS Coupe and Sedan, it was important to build not just vehicles that are strong and light, but ones with a near-perfect **50/50 FRONT-TO-REAR WEIGHT RATIO**. The result? ATS is as comfortable in hairpin turns as it is cruising the highways.



ADVANCED AERODYNAMIC components, found in the taillamps of ATS, direct airflow around the vehicle, while the decklid design, featuring an integrated brake lamp, keeps ATS firmly planted to the road.

HIGH-TECH MATERIALS such as aluminum, ultra-high-strength steel and innovative structural adhesives help make the ATS one of Cadillac's strongest, lightest structures.



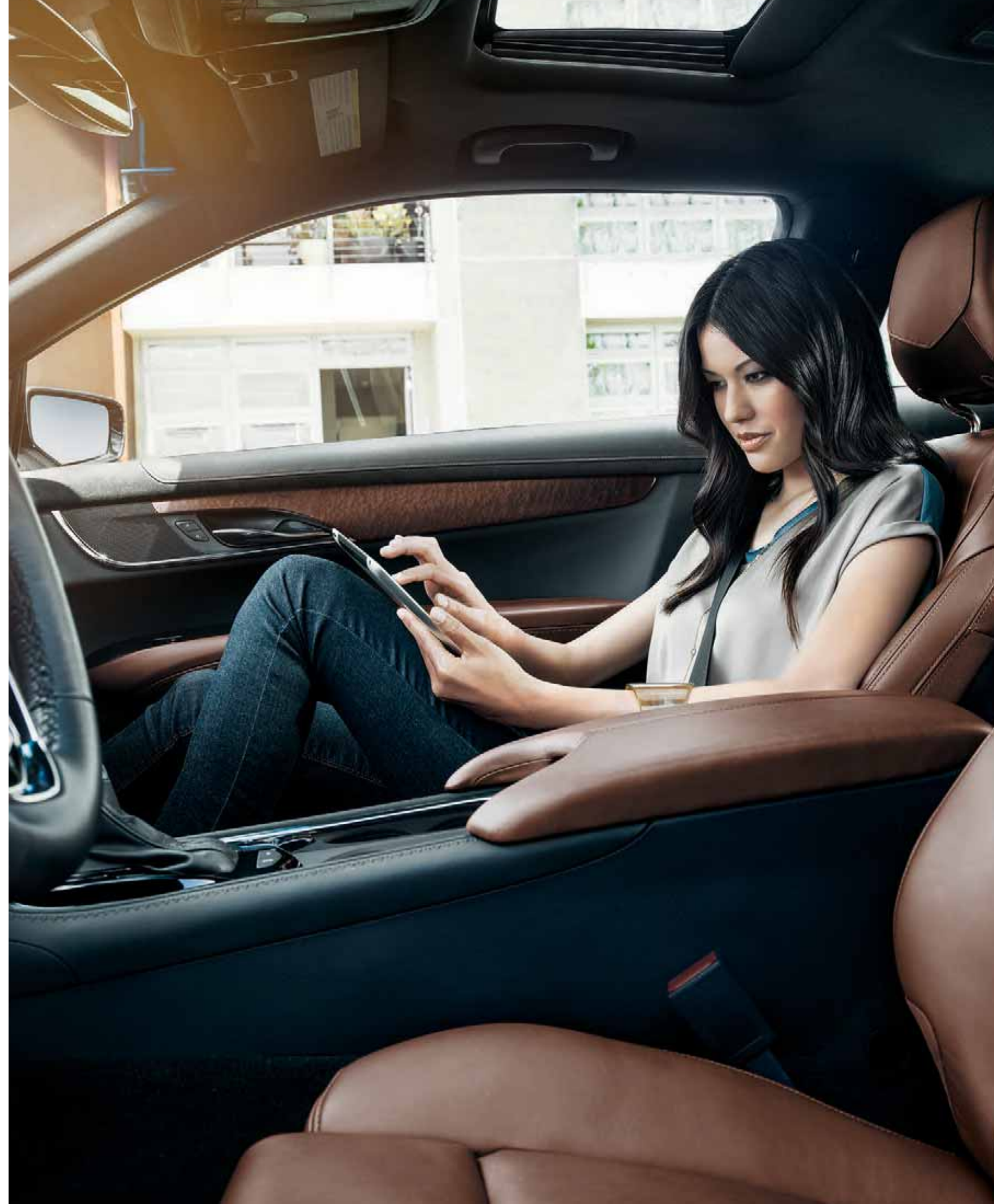
THE GADGETS



The ultimate in convenience. The **KEYLESS ACCESS AND PUSH-BUTTON START SYSTEMS** allow you to enter and start your vehicle without your key leaving your pocket or purse. You can lock and unlock your vehicle with a touch of the door handle, and even start an ATS remotely¹ with your smartphone and available OnStar RemoteLink[®] mobile app². Available **BOSE[®] PREMIUM SURROUND SOUND SYSTEM** delivers crystal clear acoustics. It features Centerpoint[®] Surround Sound and a digital amplifier. **BOSE ACTIVE NOISE CANCELLATION** actively monitors and measures undesirable cabin noise and sends a canceling frequency through the speakers to reduce powertrain noise.

The available **CADILLAC USER EXPERIENCE (CUE)³** is a fully comprehensive system with an intuitive touch screen and innovative controls – such as haptic feedback, Natural Voice Recognition and proximity sensing technology – that elevates your connection to your vehicle and the world around you. CUE impeccably combines vehicle controls, safety, navigation and communication – all into one system. ATS even allows you to inductively charge select compatible smartphones with segment-exclusive **WIRELESS CHARGING⁴** housed behind the CUE control panel. Available **ONSTAR WITH 4G LTE** and built-in Wi-Fi[®] hotspot⁵ provides a fast, reliable Wi-Fi connection. Passengers can connect their mobile devices to the OnStar Wi-Fi hotspot and get a connection up to 50 feet from the vehicle. It's the Internet at the speed of ATS. The three-window, full-color reconfigurable **DRIVER INFORMATION CENTER** allows you to customize how you see your vehicle's most important information.

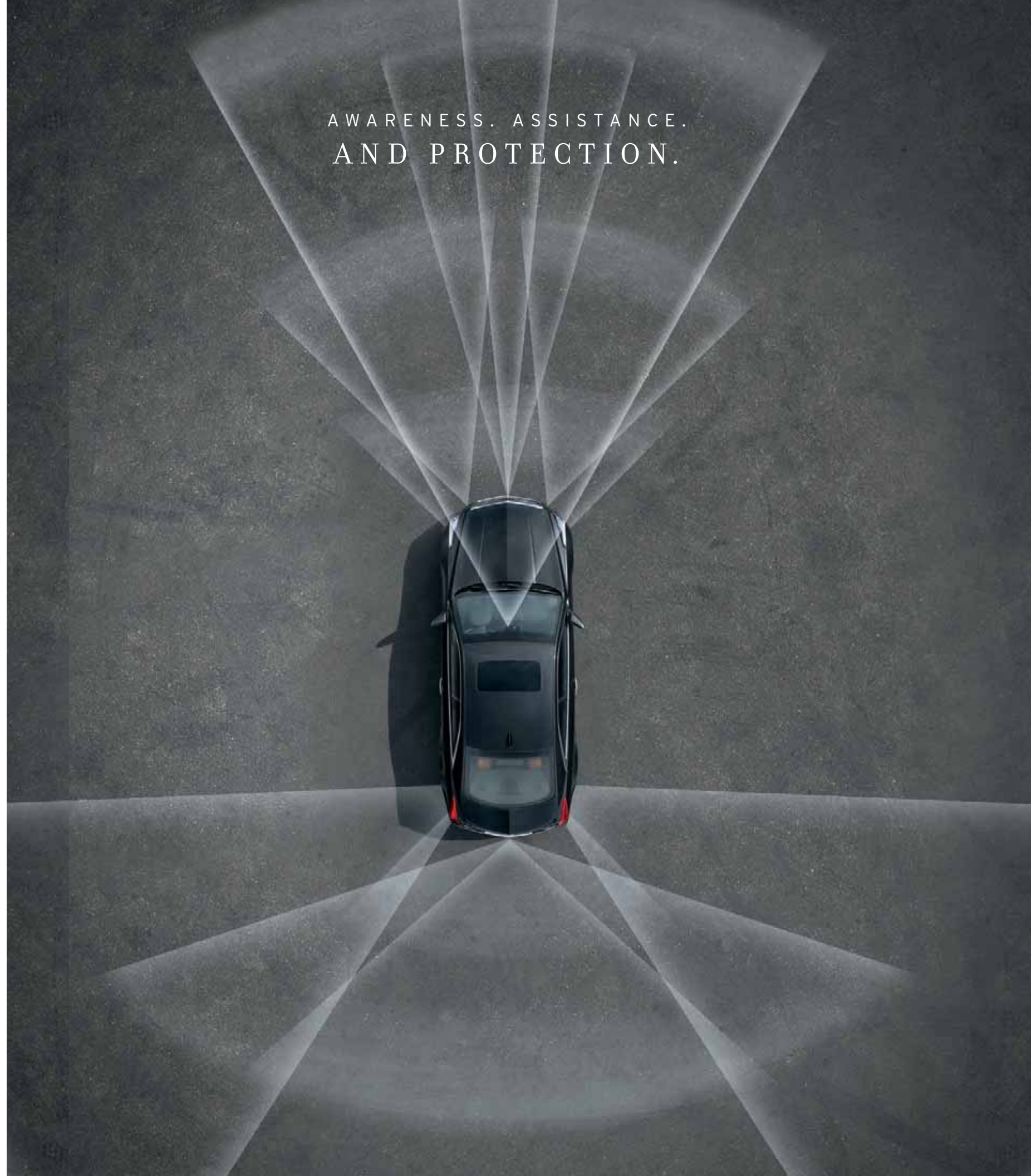
1. Automatic transmission-equipped only. 2. Available on select Apple[®], Android[™], BlackBerry[®] and Windows[®] devices. Services vary by device and conditions. Requires active OnStar subscription. 3. Full functionality requires compatible Bluetooth[®] and smartphone. Some devices require USB connectivity. 4. Late availability on ATS Sedan. The system wirelessly charges one PMA- or Qi-compatible mobile device. To check for phone or other device compatibility, see www.gmtotalconnect.com. 5. Devices must be WPA2-compliant with active OnStar service and data plan. Wi-Fi devices manufactured prior to 2006 may not be compatible. Please consult your device manufacturer for information regarding the WPA2 security protocol and Wi-Fi device compatibility. Visit onstar.com for details and system limitations.



AWARENESS. ASSISTANCE.
AND PROTECTION.

THE DEFENSE

ATS takes care of you with comprehensive available technology that includes two cameras, eight ultrasonic sensors and six radars to identify and alert you to a number of potential hazards, helping you avoid them before they happen.



The available **DRIVER AWARENESS PACKAGE** features a class-exclusive **SAFETY ALERT SEAT**, which discreetly sends pulses through the seat cushion on the left, right or simultaneously, directionally alerting you to a variety of potential hazards. **FORWARD COLLISION ALERT** uses a forward-facing camera to detect when a forward impact may be imminent. **LANE KEEP ASSIST** subtly engages the electric power steering to help keep your ATS within the lane if an unintended lane change is detected. And **LANE DEPARTURE WARNING** monitors road lines and warns you when the vehicle begins to drift from an observed lane into another without the use of a turn signal. Also included are **RAINSENSE WIPERS**, which sense moisture and automatically clear the windshield, adjusting wiper speed based on the intensity of the rain.



The available **DRIVER ASSIST PACKAGE** (late availability) includes several features to help keep you safe. **REAR CROSS-TRAFFIC ALERT** warns you of any detected rear cross-traffic, providing added confidence when backing up. **ADAPTIVE CRUISE CONTROL** uses forward-facing radar and camera technology to automatically adjust speed, helping maintain the driver-selected distance from the vehicle in front of you. In potential collision situations, **FRONT AND REAR AUTOMATIC BRAKING** systems can detect vehicles in front or objects in the rear and, in certain situations, automatically apply braking to lessen impact severity or perhaps to avoid the collision altogether. **SIDE BLIND ZONE ALERT** provides a visual alert in your side mirrors if vehicles are in your blind spots. To assist in a lane change, **LANE CHANGE ALERT** senses beyond the side blind zones, alerting you to rapidly approaching vehicles. **AUTOMATIC SAFETY BELT TIGHTENING** removes excess slack in the front belts to keep you securely in your seat during initial acceleration and spirited maneuvers.



Display your vehicle information in full color on the windshield with the available configurable Head-Up Display. Get navigation prompts, vehicle speed, audio information and more.



Safety features are no substitute for the driver's responsibility to operate the vehicle in a safe manner. The driver should remain attentive to traffic, surroundings and road conditions at all times.

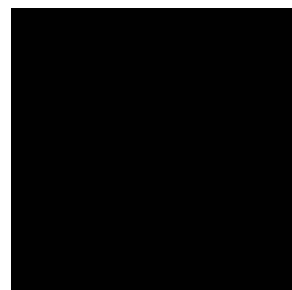
EXTERIOR COLORS

TRICOAT | A meticulous 3-layer process that results in a dramatic hue-shifting color.

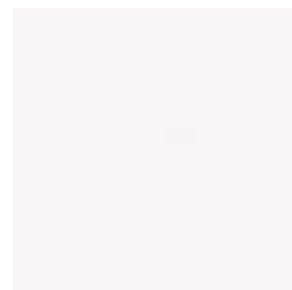
TINTCOAT | A premium 2-layer paint application with the addition of a tinted clearcoat, lending the finish an extra depth and brightness.



ATS Coupe Premium Collection / Black Diamond Tricoat | ATS Sedan Premium Collection / Phantom Gray Metallic



Black Raven



Crystal White Tricoat*



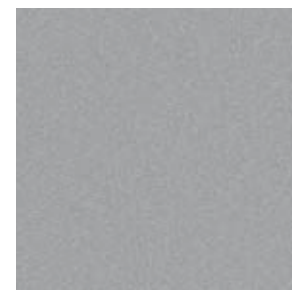
Opulent Blue Metallic



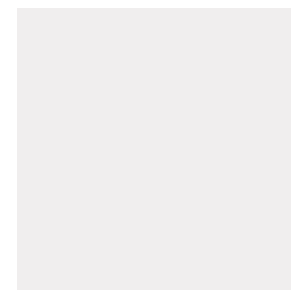
Phantom Gray Metallic



Majestic Plum Metallic*



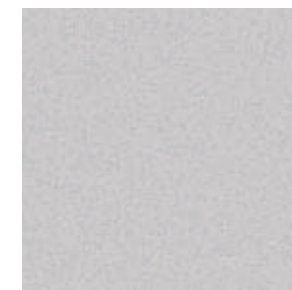
Radiant Silver Metallic



Silver Coast Metallic



Red Obsession Tintcoat*



Black Diamond Tricoat*

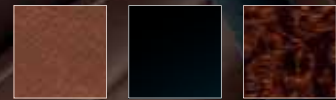


Dark Adriatic Blue Metallic*

INTERIOR THEMES



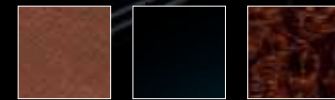
ATS COUPE



KONA BROWN¹ Semi-Aniline Leather Seating Surfaces with Sueded Microfiber Back Panels / Jet Black and Sueded Microfiber Accents / Natural Finish Sapele Wood Trim



ATS SEDAN



KONA BROWN¹ Semi-Aniline Leather Seating Surfaces with Sueded Microfiber Back Panels / Jet Black and Sueded Microfiber Accents / Natural Finish Sapele Wood Trim



JET BLACK
Leatherette Seating Surfaces
Jet Black Accents
Okapi Stripe Wood Trim



JET BLACK¹
Leather Seating Surfaces
Jet Black Accents
Brushed Aluminum Trim



JET BLACK
Leatherette Seating Surfaces
Jet Black Accents
Oil-Rubbed Bronze Appearance Trim



LIGHT NEUTRAL¹
Leather Seating Surfaces
Medium Cashmere and Sueded Microfiber Accents
Dark Olive Ash Wood Trim



JET BLACK¹
Leather Seating Surfaces
Jet Black Accents
Brushed Aluminum Trim



LIGHT PLATINUM¹
Leather Seating Surfaces
Jet Black Accents
High-Gloss Sapele Wood Trim



MORELLO RED¹
Semi-Aniline Leather Seating Surfaces
with Sueded Microfiber Back Panels
Jet Black and Sueded Microfiber Accents
Carbon Fiber Trim



LIGHT PLATINUM
Leatherette Seating Surfaces
Jet Black Accents
Oil-Rubbed Bronze Appearance Trim



MORELLO RED¹
Semi-Aniline Leather Seating Surfaces
with Sueded Microfiber Back Panels
Jet Black and Sueded Microfiber Accents
Carbon Fiber Trim



LIGHT PLATINUM¹
Leather Seating Surfaces
Jet Black Accents
High-Gloss Sapele Wood Trim

ATS COUPE



18" FORGED-ALUMINUM WHEELS WITH PREMIUM PAINTED FINISH

Standard on ATS Coupe Standard model and ATS Luxury Collection; includes P225/40R18 front and P255/35R18 rear all-season run-flat tires. Size: 18" x 8" front and 18" x 9" rear.

18" FORGED-ALUMINUM WHEELS WITH POLISHED FINISH

Standard on ATS Coupe Performance Collection and available on ATS Standard model; includes P225/40R18 front and P255/35R18 rear all-season run-flat tires. Size: 18" x 8" front and 18" x 9" rear.



18" FORGED-ALUMINUM WHEELS WITH ULTRA-BRIGHT MACHINED FINISH

Standard on ATS Coupe Premium Collection and available on Luxury and Performance Collections; includes P225/40R18 front and P255/35R18 rear all-season run-flat tires, except Premium Collection RWD models, which include performance summer-only¹ run-flat tires. Size: 18" x 8" front and 18" x 9" rear.



ATS SEDAN



17" ALUMINUM WHEELS WITH PREMIUM PAINTED FINISH

Standard on ATS Sedan 2.5L Standard model; includes P225/45R17 all-season tires. Size: 17" x 8" front and rear.

17" ALUMINUM WHEELS WITH PREMIUM PAINTED FINISH

Standard on ATS Sedan 2.0L Turbo Standard model and Performance Collection; includes P225/45R17 all-season run-flat tires. Size: 17" x 8" front and rear.



17" ALUMINUM WHEELS WITH POLISHED FINISH

Standard on ATS Sedan Luxury Collection and available on ATS Sedan Standard model; includes P225/45R17 all-season run-flat tires. Size: 17" x 8" front and rear.

18" FORGED-ALUMINUM WHEELS WITH POLISHED FINISH

Available on ATS Sedan Luxury and Premium Collections.

Luxury and Premium Collection AWD size: 18" x 8" front and rear; includes P225/40R18 all-season run-flat tires.

Premium Collection RWD size: 18" x 8" front and 18" x 9" rear; includes performance summer-only¹ run-flat tires, P225/40R18 front and P255/35R18 rear.



18" FORGED-ALUMINUM WHEELS WITH ULTRA-BRIGHT MACHINED FINISH

Standard on ATS Sedan Premium Collection and available on ATS Sedan Performance Collection.

Performance and Premium Collection AWD size: 18" x 8" front and rear; includes P225/40R18 all-season run-flat tires.

Premium Collection RWD size: 18" x 8" front and 18" x 9" rear; includes performance summer-only¹ run-flat tires, P225/40R18 front and P255/35R18 rear.

¹ Do not use summer-only tires in winter conditions, as it would adversely affect vehicle safety, performance and durability. Use only GM-approved tire and wheel combinations. Unapproved combinations may change the vehicle's performance characteristics. For important tire and wheel information, go to cadillac.com/owners/accessories.html or see your dealer.

ATS COUPE FEATURES AND OPTIONS

DIMENSIONS (IN.)	FRONT	REAR
Head room	37.6	35.1
Hip room	54.1	44.5
Leg room	42.3	33.5
Shoulder room	54.1	51.1

CAPACITIES	
Cargo volume	10.4 cu. ft.
Seating	4
Fuel (gal., approx.)	16.0



	STANDARD	LUXURY	PERFORMANCE	PREMIUM
DRIVETRAIN				
2.0L TURBO DIRECT-INJECTION, VVT 4-CYLINDER ENGINE	272 hp and 295 lb.-ft. of torque	Std	Std	Std
3.6L DIRECT-INJECTION, VVT V6 ENGINE	321 hp and 275 lb.-ft. of torque		Opt	Opt
ENGINE BLOCK HEATER		Opt	Opt	Opt
REAR-WHEEL DRIVE		Std	Std	Std
ALL-WHEEL DRIVE		Opt	Opt	Opt
TRANSMISSION				
6-speed automatic with Performance Algorithm Shifting	Std	Std	Std	Std
6-speed manual (2.0L Turbo RWD only; includes electric parking brake)	Opt	Opt	Opt	Opt
DIFFERENTIAL, REAR	Mechanical limited-slip included with manual transmission; RWD only on Premium Collection	Opt	Opt	Std
CHASSIS AND SUSPENSION				
BRAKES, 4-WHEEL DISC	Brembo® high-performance front, antilock braking system (ABS), Auto-Dry and DuraLife rotors	Std	Std	Std
STEERING, RACK-AND-PINION	ZF premium electric with variable assist	Std	Std	Std
SUSPENSION, 4-WHEEL INDEPENDENT				
Double-pivot front and 5-link rear, with driver-selectable Mode Control	Std	Std	Std	Std
Sport (included with AWD on Premium Collection)	Std	Std	Std	Opt
Performance, with driver-selectable Magnetic Ride Control (RWD only)				Std
TRACK PERFORMANCE PACKAGE	High-capacity engine cooling, supplemental engine oil cooler and high-performance brake pads (3.6L RWD models)			Opt
EXTERIOR				
GRILLE, WITH NEW CADILLAC CREST		Std	Std	Std
ILLUMINATING DOOR HANDLES			Std	Std
LIGHTING				
Daytime Running Lamps	Std	Std	Std	Std
Projector halogen headlamps	Std			
HID headlamps with LED vertical light signatures and Adaptive Forward Lighting		Std	Std	Std
MIRRORS, EXTERIOR, BODY COLOR				
Power, heated, with integrated turn signal indicators and puddle lamps	Std			
Power, heated, driver-side auto-dimming, with integrated turn signal indicators and puddle lamps		Std	Std	Std
WHEELS, FORGED-ALUMINUM 18"	See page 38 for more information	Std	Std	Std
WINDSHIELD WIPERS	Automatic Rainsense wipers with moisture detection		Opt	Std
INTERIOR				
ADAPTIVE REMOTE START				
Activates heated seats (if equipped), climate control system and rear defroster (automatic transmission only)	Std	Std	Std	Std
AIR FILTRATION SYSTEM	Automatic air circulation and air quality	Std	Std	Std
ALUMINUM SPORT PEDALS				
			Std	Std
AUDIO SYSTEM				
4.2" full-color LCD radio screen	Std			
Bose® premium 9-speaker sound system	Std	Std		
Bose premium 12-speaker Centerpoint® Surround Sound system	Opt	Opt	Std	Std
Multiple USB ¹ ports, SD card reader and auxiliary audio connectivity	Std	Std	Std	Std
HD radio (included with CUE)	Opt	Std	Std	Std
SiriusXM Satellite Radio with three-month trial ²	Std	Std	Std	Std
BLUETOOTH®				
Hands-free calling for Bluetooth-enabled cell phones with voice-prompt recognition ³	Std			
Hands-free calling and data-service streaming with Natural Voice Recognition ³	Opt	Std	Std	Std
CLIMATE CONTROL				
Dual-zone automatic with individual settings for driver and front passenger	Std	Std	Std	Std
COLD WEATHER PACKAGE	Includes heated front seats and heated steering wheel (included with AWD; available with RWD)		Opt	Opt
CONSOLE				
Front center, with integrated shifter, storage and two cupholders	Std	Std	Std	Std
Rear center, with dual cupholders	Std	Std	Std	Std
CRUISE CONTROL				
Electronic, with set and resume speed	Std	Std	Std	Std
Adaptive, with full-speed range (included with Driver Assistance Package; automatic transmission only) ⁴			Opt	Opt
CADILLAC CUE (CADILLAC USER EXPERIENCE)⁵				
Information and media control system with 8"-diagonal full-color LCD capacitive touch screen	Opt	Std	Std	Std

	STANDARD	LUXURY	PERFORMANCE	PREMIUM
INTERIOR (continued)				
DRIVER INFORMATION CENTER (DIC)	5.7" three-window configurable color display for vehicle information	Std	Std	Std
EZ KEY FULL KEYLESS ACCESS	With keyless entry to doors and trunk; includes two transmitters	Std	Std	Std
KEYLESS IGNITION WITH PUSH-BUTTON START				
		Std	Std	Std
LIGHTING				
Interior ambient accent lighting on the doors and front center console	Std	Std	Std	Std
Front and rear reading lamps and cargo area lamp	Std	Std	Std	Std
MEMORY PACKAGE	Two position and one exit preset for driver seat, outside mirrors and power steering column (if equipped)		Std	Std
MIRROR	Frameless automatic dimming rearview		Std	Std
NAVIGATION⁶	Integrated with CUE and includes voice and text guidance		Opt	Std
REAR POWER OUTLET	110V household-style power outlet located on rear face of center console		Opt	Std
SEATING, 2+2				
Front bucket	Std	Std	Std	Std
Rear, 60/40 split-folding seatback	Std	Std	Std	Std
Head restraints, 4-way adjustable front and 2-way adjustable outboard rear	Std	Std	Std	Std
Heated driver and front passenger seats (included with AWD)	Opt	Opt	Std	Std
Leatherette seating with driver and front passenger 6-way adjustments, plus 2-way lumbar adjustments	Std			
Leather seating surfaces with driver and front passenger 12-way adjustments, plus 2-way lumbar adjustments		Std	Std	Std
Semi-aniline leather seating with sueded microfiber back panels with driver and front passenger 12-way adjustments, plus 2-way lumbar adjustments		Opt	Opt	Opt
STEERING WHEEL AND COLUMN				
Audio, cruise control and DIC controls	Std	Std	Std	Std
Heated steering wheel rim (included with AWD)		Opt	Std	Std
Leather-wrapped rim with manual-adjustable tilt and telescope	Std	Std	Std	
Leather-wrapped rim with power-adjustable tilt and telescope				Std
Magnesium paddle-shift controls on sport rim steering wheel (automatic transmission only)	Std	Std	Std	Std
SUNROOF	Power retractable and tilt with sunshade	Opt	Opt	Opt
UNIVERSAL HOME REMOTE	Three-channel		Std	Std
WI-FI⁹⁷ HOTSPOT CAPABILITY	Includes a three-month or three-gigabyte data trial, whichever comes first	Std	Std	Std
WINDOWS	Power, with express-up/down	Std	Std	Std
WIRELESS CHARGING	Inductive charging system for compatible portable devices ⁸ (included with CUE)	Opt	Std	Std
SAFETY AND SECURITY				
AIRBAGS⁹	Driver and front passenger frontal, knee and side; front and rear head curtain	Std	Std	Std
ADVANCED SECURITY PACKAGE	Includes a dedicated and shielded theft-deterrent alarm, tilt sensor, steering column lock and locking wheel lugs (included in Safety and Security Package on Luxury Collection)		Opt	Std
DRIVER AWARENESS PACKAGE	Safety Alert Seat, Forward Collision Alert, Lane Keep Assist, Lane Departure Warning, IntelliBeam headlamps and Rainsense wipers (included in Safety and Security Package on Luxury Collection)		Opt	Std
SAFETY AND SECURITY PACKAGE	Includes Driver Awareness Package and Advanced Security Package content		Opt	Std
DRIVER ASSIST PACKAGE	Includes all Driver Awareness Package content plus Adaptive Cruise Control, Front and Rear Automatic Braking, electric parking brake, Rear Cross-Traffic Alert, Side Blind Zone Alert, ¹⁰ Lane Change Alert, full-color Head-Up Display (if not already equipped), Automatic Safety Belt Tightening, and power-adjustable tilt and telescope steering column (if not already equipped)			Opt
HEAD-UP DISPLAY	Full-color, configurable (included with Driver Assist Package on Performance Collection)			Opt
ONSTAR WITH 4G LTE¹¹	Includes one-year Directions & Connections [®] Plan	Std	Std	Std
PARK ASSIST, FRONT AND REAR				
		Std	Std	Std
REAR VISION CAMERA				
		Std	Std	Std
SAFETY BELTS	Lap and shoulder belts for all positions and pretensioners for driver and front passenger, rear outboard comfort guides	Std	Std	Std
STABILITRAK ELECTRONIC STABILITY CONTROL SYSTEM				
		Std	Std	Std
THEFT-DETERRENT SYSTEM				
Alarm and engine immobilizer	Std	Std	Std	Std
TIRE PRESSURE MONITORING SYSTEM				
		Std	Std	Std
TRACTION CONTROL				
All-speed, with brake and engine intervention	Std	Std	Std	Std

1. Not compatible with all devices. 2. Requires a subscription, sold separately by SiriusXM after the trial period. SiriusXM Satellite Radio service only available in the 48 contiguous United States and the District of Columbia. For more information and to view Customer Agreement, visit siriusxm.com. 3. Go to gmttotalconnect.com to find out which Bluetooth® phones are compatible with this vehicle. 4. Adaptive Cruise Control is no substitute for the driver's personal responsibility to operate the vehicle in a safe manner. The driver needs to remain attentive to traffic and road conditions and provide the steering, braking or other inputs necessary to retain control of the vehicle. 5. Full functionality requires compatible Bluetooth and smartphone. Some devices require USB connectivity. 6. Map coverage available in the United States, U.S. Virgin Islands, Puerto Rico and Canada. 7. Devices must be WPA2-compliant with active OnStar service and data plan. Wi-Fi devices manufactured prior to 2006 may not be compatible. Please consult your device manufacturer for information regarding the WPA2 security protocol and Wi-Fi device compatibility. Visit onstar.com for details and system limitations. 8. Requires Cadillac CUE. The system wirelessly charges one PMA- or Qi-compatible mobile device. To check for phone or other device compatibility, see www.gmttotalconnect.com. 9. Always use safety belts and child restraints. Children are safer when properly secured in a rear seat in the appropriate child restraint. See the Owner's Manual for more safety information. 10. Before making a lane change, always check the Side Blind Zone Alert display and the side and inside mirrors, look over your shoulder for vehicles and hazards, and activate the turn signal. 11. Visit onstar.com for vehicle availability, details and system limitations. Services and connectivity may vary by model and conditions. 4G LTE service available in select markets. Some services require data plan.

ATS SEDAN FEATURES AND OPTIONS

DIMENSIONS (IN.)	FRONT	REAR	CAPACITIES	
Head room	38.6	36.8	Cargo volume	10.4 cu. ft.
Hip room	53.0	52.3	Seating	5
Leg room	42.5	33.5	Fuel (gal., approx.)	16.0
Shoulder room	55.2	53.9		



	STANDARD	LUXURY	PERFORMANCE	PREMIUM
DRIVETRAIN				
2.5L DIRECT-INJECTION, VVT 4-CYLINDER ENGINE 202 hp and 191 lb.-ft. of torque	Std	Std		
2.0L TURBO DIRECT-INJECTION, VVT 4-CYLINDER ENGINE 272 hp and 295 lb.-ft. of torque	Opt	Opt	Std	Std
3.6L DIRECT-INJECTION, VVT V6 ENGINE 321 hp and 275 lb.-ft. of torque		Opt	Opt	Opt
ENGINE BLOCK HEATER	Opt	Opt	Opt	Opt
REAR-WHEEL DRIVE	Std	Std	Std	Std
ALL-WHEEL DRIVE (2.0L Turbo and 3.6L engines)	Opt	Opt	Opt	Opt
TRANSMISSION				
6-speed automatic with Performance Algorithm Shifting	Std	Std	Std	Std
6-speed manual (2.0L Turbo RWD only; includes electric parking brake)	Opt	Opt	Opt	Opt
DIFFERENTIAL, REAR Mechanical limited-slip included with manual transmission; RWD only on Premium Collection	Opt	Opt	Opt	Std
CHASSIS AND SUSPENSION				
BRAKES, 4-WHEEL DISC				
Antilock braking system (ABS), Auto-Dry and DuraLife rotors	Std	Std	Std	Std
Brembo® high-performance front	Opt	Std	Std	Std
STEERING, RACK-AND-PINION ZF premium electric with variable assist	Std	Std	Std	Std
SUSPENSION, 4-WHEEL INDEPENDENT				
Double-pivot front and 5-link rear, with driver-selectable Mode Control	Std	Std	Std	Std
Sport (included with AWD on Premium Collection)	Std	Std	Std	Opt
Performance, with driver-selectable Magnetic Ride Control (RWD)				Std
TRACK PERFORMANCE PACKAGE High-capacity engine cooling, supplemental engine oil cooler and high-performance brake pads (3.6L RWD only)				Opt
EXTERIOR				
ACTIVE AERO GRILLE SHUTTERS With 2.0L Turbo and 3.6L engines	Opt	Opt	Std	Std
GRILLE, WITH NEW CADILLAC CREST	Std	Std	Std	Std
ILLUMINATING DOOR HANDLES			Std	Std
LIGHTING				
Daytime Running Lamps	Std	Std	Std	Std
Projector halogen headlamps	Std	Std		
HID headlamps with LED vertical light signatures and Adaptive Forward Lighting			Std	Std
MIRRORS, EXTERIOR, BODY COLOR				
Power, heated	Std			
Power, heated, driver-side auto-dimming, with integrated turn signal indicators and puddle lamps		Std	Std	Std
SPOILER, REAR DECKLID Integrated with LED center high-mounted stop lamp (CHMSL)	Std	Std	Std	Std
WHEELS, ALUMINUM 17" See page 39 for more information	Std	Std	Std	
WHEELS, FORGED-ALUMINUM 18" See page 39 for more information		Opt	Opt	Std
WINDSHIELD WIPERS Automatic Rainsense wipers with moisture detection		Opt	Std	Std
INTERIOR				
ADAPTIVE REMOTE START				
Activates heated seats (if equipped), climate control system and rear defroster (automatic transmission only)		Std	Std	Std
AIR FILTRATION SYSTEM Automatic air circulation and air quality	Std	Std	Std	Std
ALUMINUM SPORT PEDALS			Std	Std
AUDIO SYSTEM				
4.2" full-color LCD radio screen	Std			
Bose® premium 7-speaker sound system	Std	Std		
Bose premium 10-speaker Centerpoint® Surround Sound system	Opt	Opt	Std	Std
Multiple USB ¹ ports, SD card reader and auxiliary audio connectivity	Std	Std	Std	Std
HD radio (included with CUE)	Opt	Std	Std	Std
SiriusXM Satellite Radio with three-month trial ²	Std	Std	Std	Std
BLUETOOTH®				
Hands-free calling for Bluetooth-enabled cell phones with voice-prompt recognition ³	Std			
Hands-free calling and data service streaming with Natural Voice Recognition ³	Opt	Std	Std	Std
CLIMATE CONTROL Dual-zone automatic with individual settings for driver and front passenger	Std	Std	Std	Std
COLD WEATHER PACKAGE Includes heated driver and front passenger seats and heated steering wheel		Opt	Opt	Opt
CONSOLE Front center with integrated shifter, storage and two cupholders	Std	Std	Std	Std
CRUISE CONTROL				
Electronic, with set and resume speed	Std	Std	Std	Std
Adaptive, with full-speed range ⁴ (included with Driver Assist Package)			Opt	Opt
CADILLAC CUE (CADILLAC USER EXPERIENCE)®				
Information and media control system with 8"-diagonal full-color LCD capacitive touch screen	Opt	Std	Std	Std
DRIVER INFORMATION CENTER (DIC) 5.7" three-window configurable color display for vehicle information	Std	Std	Std	Std

	STANDARD	LUXURY	PERFORMANCE	PREMIUM
INTERIOR (continued)				
EZ KEY FULL KEYLESS ACCESS With keyless entry to all doors and trunk; includes two transmitters	Std	Std	Std	Std
KEYLESS IGNITION WITH PUSH-BUTTON START	Std	Std	Std	Std
LIGHTING				
Interior ambient accent lighting on the doors and center console	Std	Std	Std	Std
Front and rear reading lamps and cargo area lamp	Std	Std	Std	Std
MEMORY PACKAGE Two position and one exit preset for driver seat, outside mirrors and power steering column (if equipped)		Std	Std	Std
MIRROR Frameless automatic dimming rearview		Std	Std	Std
NAVIGATION® Integrated with CUE and includes voice and text guidance		Opt	Opt	Std
REAR POWER OUTLET 110V household-style power outlet located on rear face of center console		Opt	Opt	Std
SEATING, FIVE-PASSENGER				
Front bucket	Std	Std	Std	Std
Rear, fixed seatback includes fold-down center armrest, integrated storage and dual cupholders		Std	Std	Std
Rear, 60/40 split-folding seatback includes fold-down center armrest, integrated storage, dual cupholders and trunk access door	Std			
Head restraints, 4-way adjustable front and 2-way adjustable outboard rear	Std	Std	Std	Std
Heated driver and front passenger seats	Opt	Opt	Opt	Opt
Leatherette seating with driver and front passenger 6-way adjustments, plus 2-way lumbar adjustments	Std			
Leather seating surfaces with driver and front passenger 8-way adjustments, plus 2-way lumbar adjustments		Std		
Leather seating surfaces with driver 12-way and front passenger 10-way adjustments, plus 2-way lumbar adjustments			Std	Std
Semi-aniline leather seating with sueded microfiber back panels with driver 12-way and front passenger 10-way adjustments, plus 2-way lumbar adjustments		Opt	Opt	Opt
STEERING WHEEL AND COLUMN				
Audio, cruise control and DIC controls	Std	Std	Std	Std
Heated steering wheel rim		Opt	Opt	Opt
Leather-wrapped rim with manual-adjustable tilt and telescope	Std	Std	Std	
Leather-wrapped rim with power-adjustable tilt and telescope				Std
Magnesium paddle-shift controls on sport rim steering wheel (automatic transmission only)			Std	Std
SUNROOF Power retractable and tilt with sunshade	Opt	Opt	Opt	Opt
UNIVERSAL HOME REMOTE Three-channel		Std	Std	Std
WI-FI® HOTSPOT CAPABILITY⁷ Includes a three-month or three-gigabyte data trial, whichever comes first (late availability)	Std	Std	Std	Std
WINDOWS Power, with express-up/down in front and express-down in rear; includes rear passenger lockout	Std	Std	Std	Std
WIRELESS CHARGING Inductive charging system for compatible portable devices (included with CUE) ⁸	Opt	Std	Std	Std
SAFETY AND SECURITY				
AIRBAGS⁹ Driver and front passenger frontal, knee and side; front and rear head curtain	Std	Std	Std	Std
ADVANCED SECURITY PACKAGE Includes a dedicated and shielded theft-deterrent alarm, tilt sensor, steering column lock and locking wheel lugs (included in Safety and Security Package on Luxury Collection)		Opt	Std	Std
DRIVER AWARENESS PACKAGE Safety Alert Seat, Forward Collision Alert, Lane Departure Warning, Lane Keep Assist, IntelliBeam headlamps, Rainsense wipers and rear side airbags		Opt	Std	Std
SAFETY AND SECURITY PACKAGE Includes Driver Awareness Package and Advanced Security Package content		Opt		
DRIVER ASSIST PACKAGE Includes all Driver Awareness Package content plus Adaptive Cruise Control, Front and Rear Automatic Braking, electric parking brake, Rear Cross-Traffic Alert, Side Blind Zone Alert, ¹⁰ Lane Change Alert, full-color Head-Up Display (if not already equipped), Automatic Safety Belt Tightening, and power-adjustable tilt and telescope steering column (if not already equipped)			Opt	Opt
HEAD-UP DISPLAY Full-color, configurable			Opt	Std
ONSTAR WITH 4G LTE¹¹ Standard one-year Directions & Connections® Plan	Std	Std	Std	Std
PARK ASSIST, FRONT AND REAR		Std	Std	Std
REAR VISION CAMERA Includes "guidelines" indicating the vehicle's projected path when vehicle is put in Reverse	Opt	Std	Std	Std
SAFETY BELTS Lap and shoulder belts for all positions and pretensioners for driver and front passenger, rear outboard comfort guides	Std	Std	Std	Std
STABILITRAK ELECTRONIC STABILITY CONTROL SYSTEM	Std	Std	Std	Std
THEFT-DETERRENT SYSTEM Alarm and engine immobilizer	Std	Std	Std	Std
TIRE INFLATION KIT			Std	
TIRE PRESSURE MONITORING SYSTEM	Std	Std	Std	Std
TRACTION CONTROL All-speed with brake and engine intervention	Std	Std	Std	Std

1. Not compatible with all devices. 2. Requires a subscription, sold separately by SiriusXM after the trial period. SiriusXM Satellite Radio service only available in the 48 contiguous United States and the District of Columbia. For more information and to view Customer Agreement, visit siriusxm.com. 3. Go to gmtotalconnect.com to find out which Bluetooth® phones are compatible with this vehicle. 4. Adaptive Cruise Control is no substitute for the driver's personal responsibility to operate the vehicle in a safe manner. The driver needs to remain attentive to traffic and road conditions and provide the steering, braking or other inputs necessary to retain control of the vehicle. 5. Full functionality requires compatible Bluetooth and smartphone. Some devices require USB connectivity. 6. Map coverage available in the United States, U.S. Virgin Islands, Puerto Rico and Canada. 7. Devices must be WPA2-compliant with active OnStar service and data plan. Wi-Fi devices manufactured prior to 2006 may not be compatible. Please consult your device manufacturer for information regarding the WPA2 security protocol and Wi-Fi device compatibility. Visit onstar.com for details and system limitations. 8. Late availability. Requires Cadillac CUE. The system wirelessly charges one PMA- or Qi-compatible mobile device. To check for phone or other device compatibility, see www.gmtotalconnect.com. 9. Always use safety belts and child restraints. Children are safer when properly secured in a rear seat in the appropriate child restraint. See the Owner's Manual for more safety information. 10. Before making a lane change, always check the Side Blind Zone Alert display and the side and inside mirrors, look over your shoulder for vehicles and hazards, and activate the turn signal. 11. Visit onstar.com for vehicle availability, details and system limitations. Services and connectivity may vary by model and conditions. 4G LTE service available in select markets. Some services require data plan.

Cadillac

OWNER BENEFITS

We have created the most comprehensive suite of owner benefits offered by any luxury automotive brand in the world, providing everything our Cadillac owners need and everything they deserve.



PREMIUM CARE MAINTENANCE

The Cadillac Premium Care Maintenance program¹ covers routine oil changes, tire rotations, certain air filter replacements and a thorough multipoint vehicle inspection for 4 years or 50,000 miles.²



WARRANTY PROTECTION

The Cadillac 6-year or 70,000-mile³ Powertrain Warranty offers more years and miles standard than BMW, Mercedes-Benz and Audi. In addition, our 4-year or 50,000-mile³ Bumper-to-Bumper Warranty covers repairs on your entire vehicle, including parts and labor, to correct any concerns in materials or workmanship.



COURTESY TRANSPORTATION

This program provides alternative transportation and/or reimbursement of certain transportation expenses if your Cadillac requires warranty repairs for 6 years or 70,000 miles.⁴ That is more years of service standard than any leading luxury automaker.



ROADSIDE ASSISTANCE

Cadillac offers more years of standard Roadside Assistance than any leading luxury automaker, with services for 6 years or 70,000 miles.⁴ This 24/7 program provides lockout, towing, refueling, Dealer Technician Roadside services and more.



The OnStar[®] Directions & Connections[®] Plan allows you to push one button to connect with a specially trained Advisor to find the things and places you need. Get directions or a diagnostics check while you drive. Make calls with both hands on the wheel, and control your vehicle with the OnStar RemoteLink[®] mobile app.⁵ And, as always, get help immediately in a crash or an emergency. ATS comes standard with one year of the OnStar Directions & Connections Plan.



EMERGENCY BY ONSTAR

With Automatic Crash Response,⁷ in a crash, built-in sensors can automatically alert a specially trained OnStar Advisor who is immediately connected into your Cadillac to see if you need help sent to your exact location. Other OnStar emergency services include Injury Severity Prediction and First Assist, which ensure you quickly get the help you need when seconds matter most.



SECURITY BY ONSTAR

If you've reported your Cadillac stolen, OnStar can use GPS technology to help authorities quickly locate and recover it. An OnStar Advisor can further assist authorities by sending a remote signal to activate Stolen Vehicle Slowdown,⁸ which can gradually slow the vehicle to a stop to aid in its recovery. Advisors can also enable a Remote Ignition Block,⁹ making it impossible to restart a stolen vehicle once it has been turned off.



NAVIGATION BY ONSTAR

Just push the blue OnStar button, and an Advisor can download turn-by-turn directions⁵ to your Cadillac. A voice will then call out every turn, or the directions will be sent to your navigation system, if equipped. You can also plan routes using MapQuest.com[®] and send them to your Cadillac.



CONNECTIONS BY ONSTAR

Available OnStar Hands-Free Calling⁹ allows you to make and receive calls safely from your Cadillac. With the OnStar RemoteLink mobile app, you can access real-time information and control your vehicle from anywhere you have cell phone service. With a few simple steps, you can find a destination using the RemoteLink app and send directions right to your vehicle.

Available OnStar with 4G LTE and built-in Wi-Fi¹⁰ hotspot¹⁰ can help you stay better connected to the world around you. The content and connections you crave throughout your day have moved inside your Cadillac, with a hotspot capable of supporting up to seven mobile devices at once, along with a high-speed, highly reliable 4G LTE connection – making it an easy way to access data on the go. You'll also see an enhancement to current OnStar services, including shorter response times and faster service delivery. This is the most powerful OnStar ever, empowering you and your passengers to create a highly connected world inside your car.



DIAGNOSTICS BY ONSTAR

With the most comprehensive vehicle diagnostics¹¹ from OnStar, maintaining your Cadillac can be as simple as checking your email or your OnStar RemoteLink mobile app. Every month, you can receive an email with the status of key operating systems, or push your blue OnStar button for a real-time diagnostics check on demand!¹¹



MYCADILLAC APP¹²



The ingenuity of the ATS doesn't stop with the vehicle. As a Cadillac owner, an advanced app is available for your new car. From virtually anywhere at any time, a few taps of your finger on your iPhone[®] or Android[™] smartphone let you access features such as parking reminders, Roadside Assistance and more. Plus, in conjunction with the OnStar RemoteLink app, you'll have the ability to remotely start your vehicle (when factory-equipped with remote start) and lock and unlock your doors from any place you have cell service. In addition, you can access key diagnostic information, including fuel tank level and range and remaining oil life.

1. Standard on all 2011 and newer vehicles. 2. Whichever comes first. See dealer for select scheduled maintenance details. 3. Whichever comes first. See dealer for limited warranty details. 4. Whichever comes first. 5. Visit onstar.com for coverage map, details and system limitations. Services vary by conditions. 6. Available on select Apple[®], Android[™], BlackBerry[®] and Windows[®] devices. Services vary by device and conditions. Requires active OnStar subscription. 7. Visit onstar.com for details and system limitations. OnStar acts as a link to existing emergency service providers. Not all vehicles may transmit all crash data. 8. Service varies with conditions. 9. Requires an existing OnStar service contract and prepaid minutes. Visit onstar.com for coverage map, details and system limitations. 10. Devices must be WPA2-compliant with active OnStar service and data plan. Wi-Fi devices manufactured prior to 2006 may not be compatible. Please consult your device manufacturer for information regarding the WPA2 security protocol and Wi-Fi device compatibility. Visit onstar.com for details and system limitations. 11. Capabilities vary by model. Visit onstar.com for details and system limitations. 12. Requires iPhone[®] or Android[™] mobile device.



ABOUT THIS CATALOG

We have tried to make this catalog comprehensive and factual. We reserve the right, however, to make changes at any time, without notice, in prices, colors, materials, equipment, specifications, models and availability. Specifications, dimensions, measurements, ratings and other numbers in this catalog and other printed materials provided at the dealership or affixed to vehicles are approximates based upon design and engineering drawings and prototypes and laboratory tests. Your vehicle may differ due to variations in manufacture and equipment. Since some information may have been updated since the time of printing (August 2014), please check with your Cadillac dealer for complete details. Any variations in colors shown are due to reproduction variation in the printing process. Cadillac reserves the right to lengthen or shorten the model year for any product for any reason, or start and end model years at different times. Note: Some photographs in this catalog show vehicles with optional equipment.

ONSTAR[®] OnStar services require vehicle electrical system (including battery), wireless service and GPS satellite signals to be available and operating for features to function properly. OnStar acts as a link to existing emergency service providers. Subscription Service Agreement required. Call 1-888-4ONSTAR (466-7827) or visit onstar.com for OnStar's Terms and Conditions, Privacy Policy, and details and system limitations.

ENGINES Cadillac products are equipped with engines produced by GM Powertrain or suppliers to GM worldwide. The engines in Cadillac products may also be used in other GM makes or models.

TIRE SEALANT AND COMPRESSOR KIT If your vehicle has a tire sealant and compressor kit, it uses a liquid tire sealant to temporarily seal up to a 1/4-inch puncture in the tread area of the tire. After using the inflator kit, it is recommended that you take the tire to an authorized dealer for inspection and repair as soon as possible but at least within 100 miles of driving. The tire sealant cannot seal and inflate sidewall damage, punctures larger than 1/4 inch, or a tire that has unseated from the wheel. The sealant can only be used on one tire one time before its expiration date.

ASSEMBLY Cadillac vehicles and their components are assembled or produced by different operating units of General Motors, its subsidiaries or suppliers to GM worldwide. We sometimes find it necessary to produce Cadillac vehicles with different or differently sourced components than originally scheduled. Since some options may be unavailable when your vehicle is assembled, we suggest that you verify that your vehicle includes the equipment you ordered or, if there are changes, that they are acceptable to you.

UPDATED SERVICE INFORMATION Cadillac dealers receive useful service bulletins about Cadillac products. You may purchase them from Helm Incorporated by calling 1-800-551-4123 or by visiting helminc.com.

NEW VEHICLE LIMITED WARRANTY World-class coverage comes standard on every 2015 Cadillac. This warranty is for Cadillac vehicles registered in the U.S.A. See your Cadillac dealer for terms and conditions.

COVERED FOR 6 YEARS/70,000 MILES (WHICHEVER COMES FIRST) Powertrain Limited Warranty with no deductible, Roadside Assistance Program¹ and Courtesy Transportation Program¹.

COVERED FOR 4 YEARS/50,000 MILES (WHICHEVER COMES FIRST) Bumper-to-Bumper coverage; tires – defects in material and workmanship; repairs made to correct any vehicle defect; corrosion on body sheet metal panels.

RUST-THROUGH COVERAGE Cadillac vehicles are designed and built to resist corrosion and rust-through corrosion. Any body sheet metal that rusts through (in the form of an actual hole in the sheet metal) is covered for 6 years unlimited mileage. Cosmetic or surface corrosion, resulting from stone chips or scratches in the paint, for example, is not included in the rust-through coverage. Application of additional rust-inhibiting materials is not required under the rust-through coverage and none is recommended. See your Cadillac dealer for terms of this limited warranty.

FLEET ORDERS Some standard content may be deleted with fleet orders. See dealer for details.

1. Roadside Assistance Program and Courtesy Transportation Program are not part of the New Vehicle Limited Warranty. A separate booklet titled "Warranty and Owner Assistance Information" furnished with each new vehicle provides detailed warranty coverage information.

GM, the GM emblem, Cadillac, the Cadillac Crest, OnStar, the OnStar emblem and the slogans, emblems, vehicle model names, vehicle body designs and other marks appearing in this catalog are the trademarks and/or service marks of General Motors, its subsidiaries, affiliates or licensors. Apple and iPhone are trademarks of Apple Inc., registered in the U.S. and other countries. Android is a trademark of Google, Inc. The trademark BlackBerry is owned by Research In Motion Limited and is registered in the United States and may be pending or registered in other countries. General Motors is not endorsed, sponsored, affiliated with or otherwise authorized by Research In Motion Limited. Bose and Centerpoint are registered trademarks of Bose Corporation. Windows is a registered trademark of Microsoft, Inc. Pandora is a registered trademark of Pandora Media, Inc. SiriusXM Satellite Radio is a registered trademark of Sirius XM Radio Inc. MapQuest.com is a registered trademark of AOL, Inc. Wi-Fi is a registered trademark of Wi-Fi Alliance. ©2014 General Motors. All rights reserved.