



XLR



Cadillac

CADILLAC, THE NAME EVOKES A CENTURY'S HISTORY OF INNOVATION IN AUTOMOTIVE TECHNOLOGY AND STYLING.

FULFILLING THE PHILOSOPHY OF ART & SCIENCE IT STANDS TODAY FOR THE UNDERLYING SPIRIT THAT HAS GUIDED CADILLAC'S NOTABLE ACHIEVEMENTS: A COMMITMENT TO APPLY THE SUPERIOR DESIGNS AND SOPHISTICATED TECHNOLOGIES TO THE AUTOMOBILE.

THIS MARRIAGE OF DESIGN AND INNOVATION IS AT THE CORE OF CADILLAC'S PRODUCT PORTFOLIO.

XLR – THREE BOLD LETTERS THAT STAND FOR THIS NEW ERA OF CADILLAC.

THIS EXCITING NEW TWO-SEATER ROADSTER MARKS A RETURN TO THE ELEMENTAL – THE AIR, THE WOODS, THE BOUNDLESS WATERS, THE INHERENT FACTORS AND FORCES OF THE EARTH.

CAREFULLY INTEGRATED, SUCH NATURAL PROPERTIES BECAME THE BEDROCK OF XLR:
A ROADSTER THAT COMBINES AMERICAN DESIGN, BREAKTHROUGH STYLING, EXHILARATING PERFORMANCE, PURPOSEFUL TECHNOLOGY, AND CONTEMPORARY LUXURY.



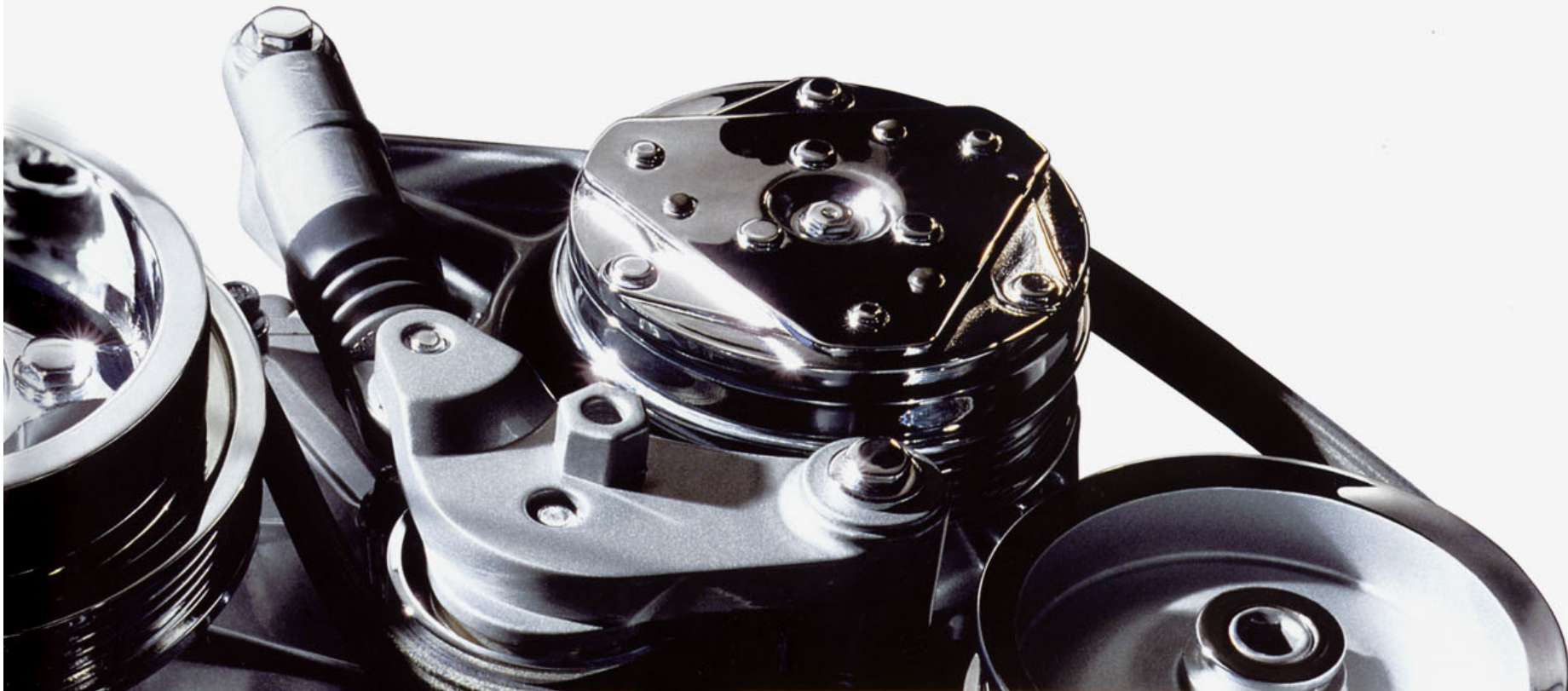


WAITING TO EXHALE

The induction of air into the 4.6-liter Northstar 32-valve V8 VVT translates into a blistering 240 kW/326 hp at 6,450 rpm and 423 Nm of torque @ 4,400 rpm. VVT – short for variable-valve timing – precisely controls fuel injection and combustion efficiency



meaning zero compromise between low-speed torque and pedal-down XLR performance. And perform it does. Just press the starter button, let the engine take a deep breath, and wait for it to exhale!



RIDE WITH THE WIND

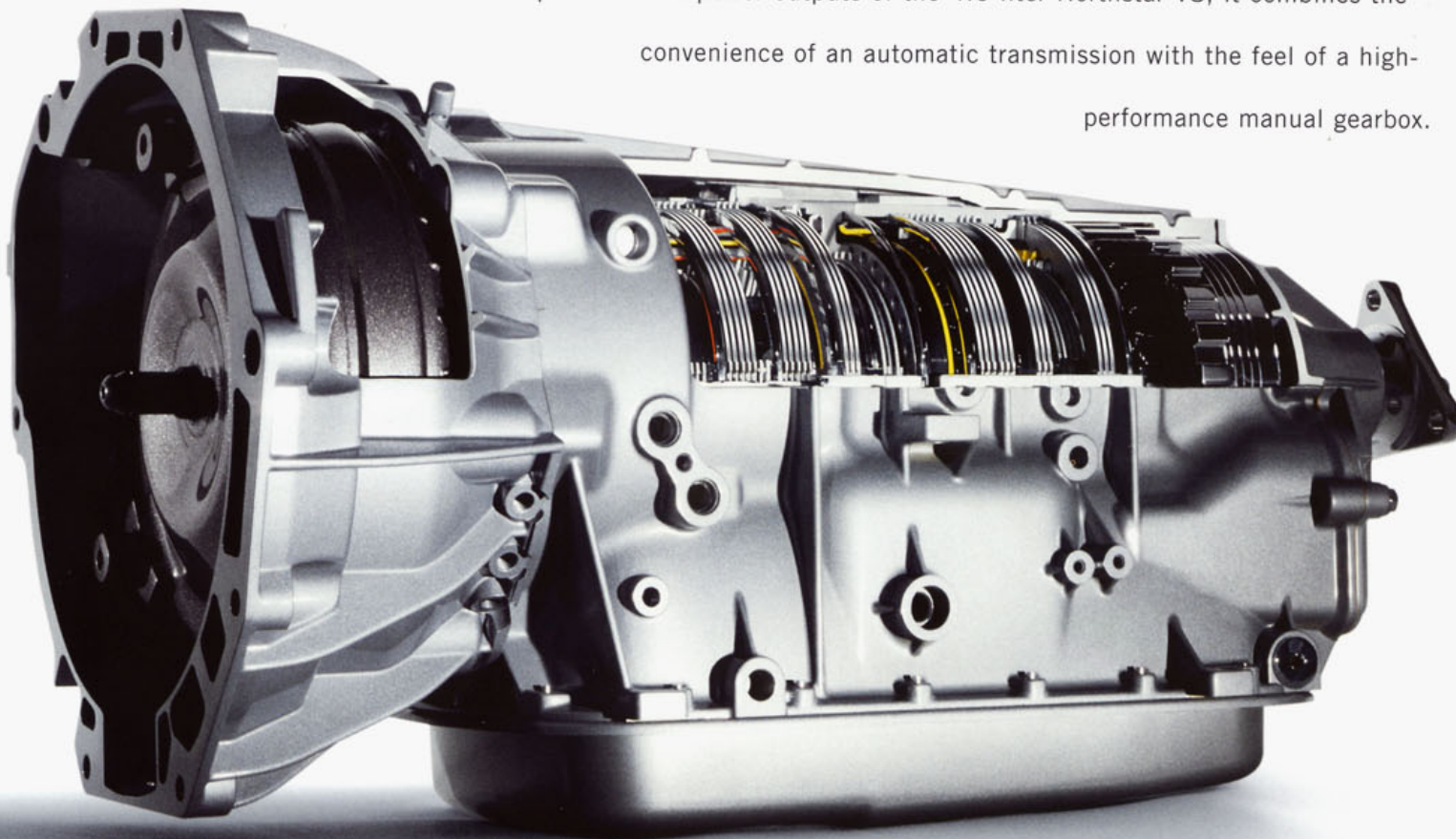
Supercomputers digitized the XLR's design and its wind tunnel characteristics into more than five million discrete elements. In addition 300 hours of wind tunnel testing and clay model refinements lead to the XLR's wind-splitting 0.31 drag coefficient. Add to that a wide stance plus sharp linear surfaces and you'll achieve outstanding on-road stability and reduced wind noise at highway speeds.





AN AIR OF IMPORTANCE

The purity of air can greatly affect a gearbox during manufacture. The 5-speed Hydra-Matic transmission for the XLR is crafted in a clean-room atmosphere, leading to impeccable quality. Designed specifically to manage the higher torque and horsepower outputs of the 4.6-liter Northstar V8, it combines the convenience of an automatic transmission with the feel of a high-performance manual gearbox.

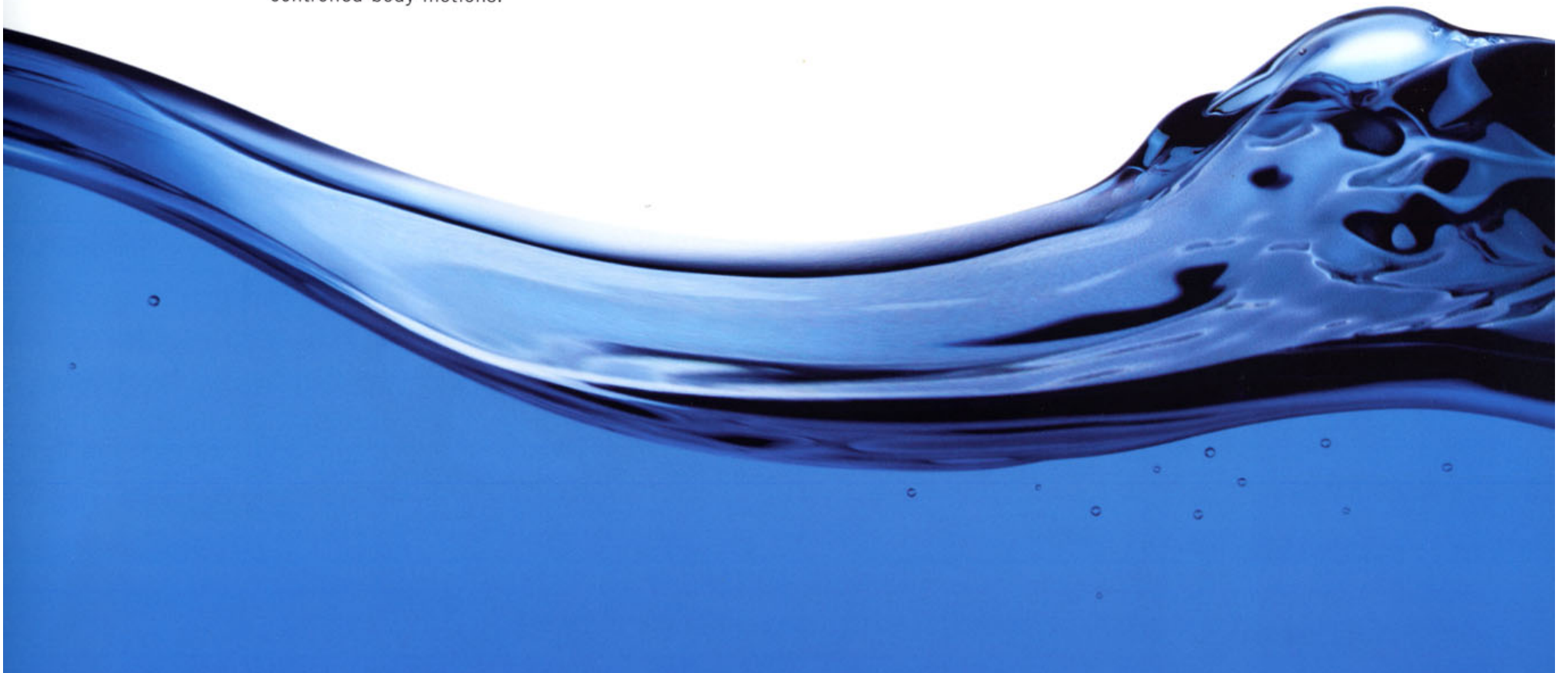




MAGNETIC RIDE CONTROL

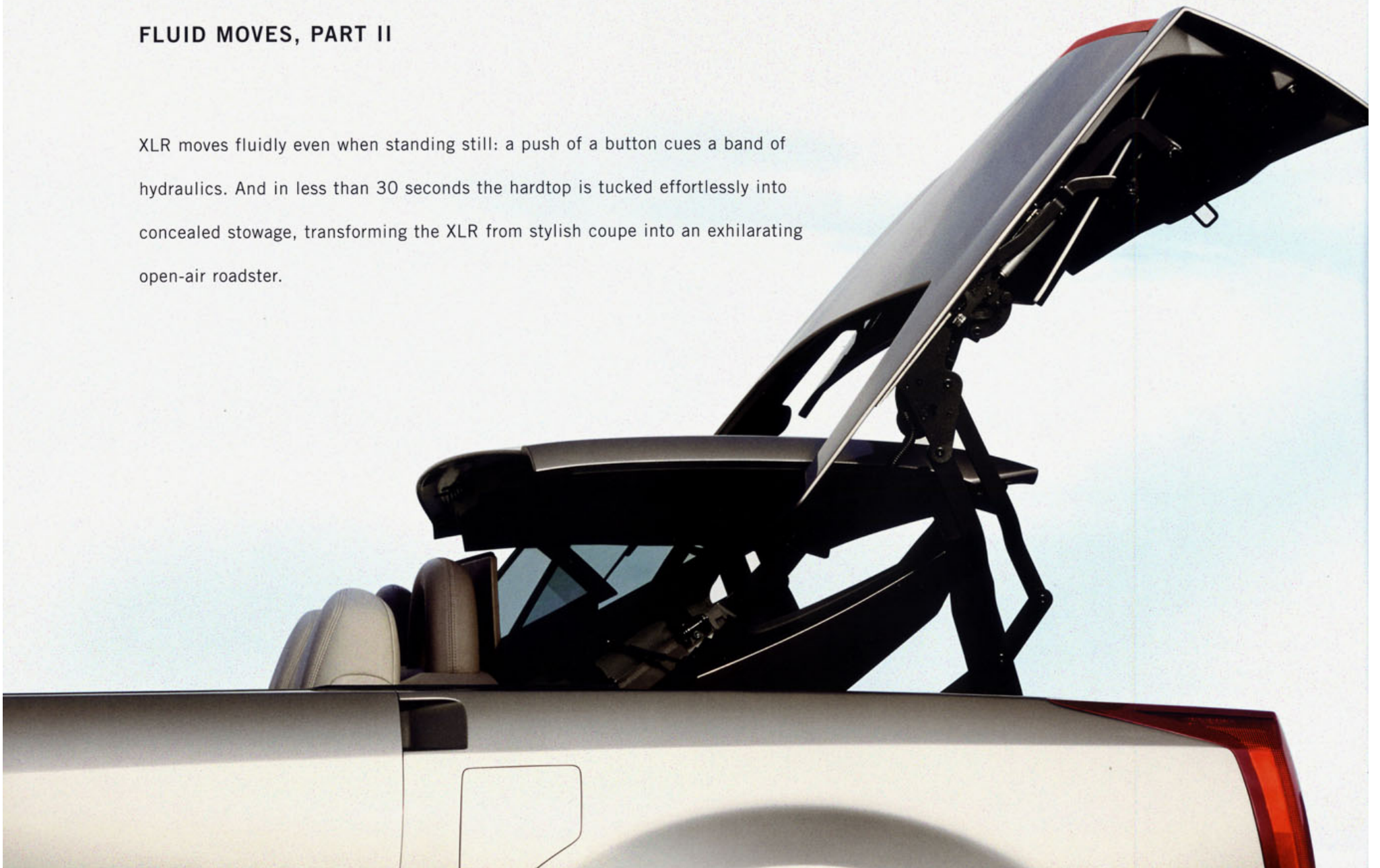
FLUID MOVES, PART I

The fluid-filled struts of the Magnetic Ride Control system offer the world's fastest-reacting suspension system. The fluid responds to an electric current which is then adapted by the Magnetic Ride Control system as it reads the road pavement up to 1,000 times per second. And all that while you are enjoying the XLR's smooth, well-controlled body motions.



FLUID MOVES, PART II

XLR moves fluidly even when standing still: a push of a button cues a band of hydraulics. And in less than 30 seconds the hardtop is tucked effortlessly into concealed stowage, transforming the XLR from stylish coupe into an exhilarating open-air roadster.





IN CLIMATE CHAMBERS THAT SIMULATE INTENSE HEAT, COLD, AND HUMIDITY, THE XLR DECKLID WAS TORTURE-TESTED. IT EFFORTLESSLY OPENED AND CLOSED 22,800 TIMES – THE EQUIVALENT OF OPENING AND CLOSING IT TWICE A DAY UNTIL THE YEAR 2035.



WATERPROOF

Blasted by 18,000 liters of water for eight grueling minutes, or doused with water and left for hours, simulating parking after a storm – the retractable roof had to withstand punishing tests like these, before being allowed atop the XLR.



GRAVITY DEFIED

Driver Shift Control combines the convenience of an automatic transmission with the feel of a clutchless manual, crisply down or up-shifting with just a twitch of the shift knob. Performance Algorithm Shifting uses vehicle sensors to program the transmission to respond intuitively. To seemingly defy the notion of gravity is one of the exhilarations of being behind the wheel of the XLR.



TECHNOLOGY TRANSFER

1 4.6 L NORTHSTAR V8 VTI

A sophisticated, technologically advanced power plant that establishes a new benchmark for ultra-luxury roadsters, offering a peak output of 240 kW/326 hp at 6,450 rpm, 423 Nm of torque at 4,400 rpm, and a 10.5:1 compression ratio. Variable valve timing phasers are controlled electronically and actuated hydraulically, not mechanically, so intake and exhaust valves operate independently. Or in other words: fast warm-ups, maximum refinement of idle, and uncompromised performance.

2 ELECTRONIC THROTTLE CONTROL

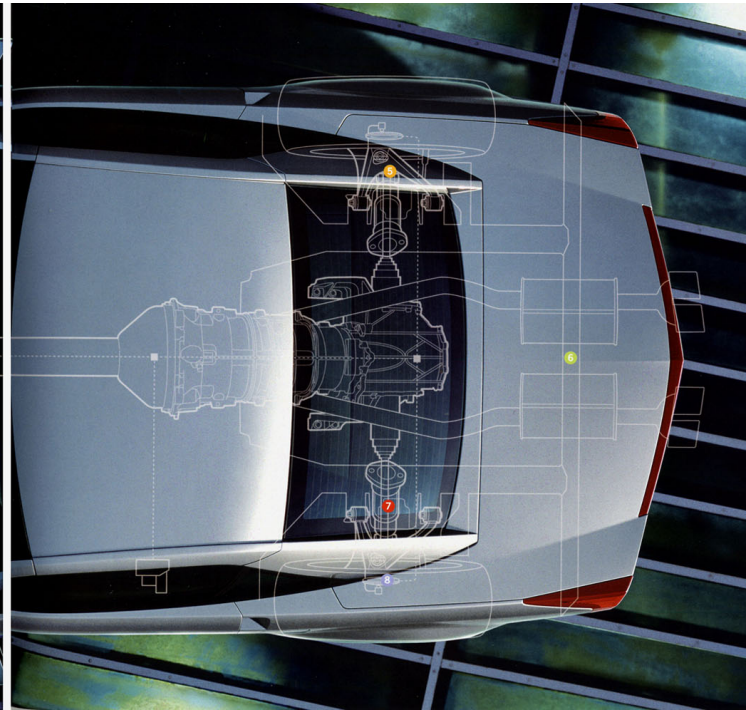
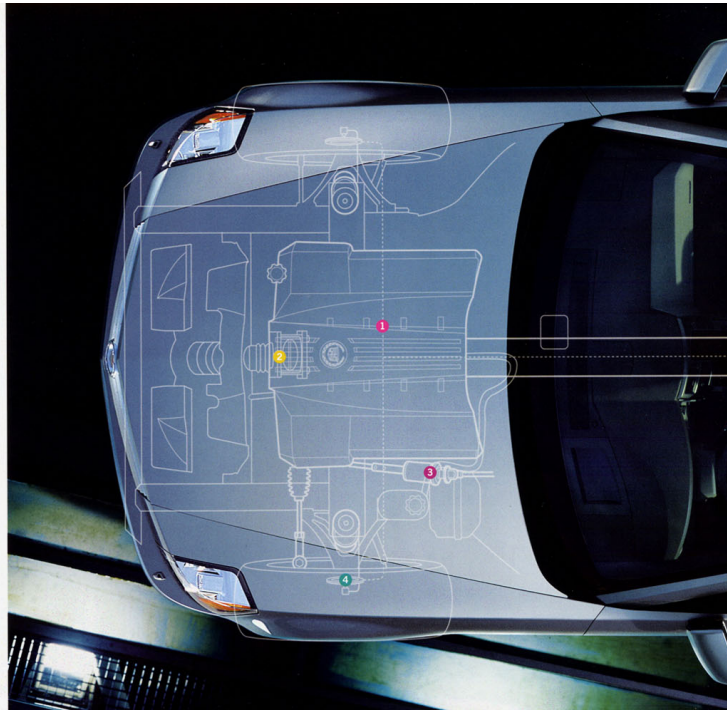
This drive-by-wire system allows the transmission to react quickly to driver input – and with pinpoint accuracy – thus altering the XLR's behavior as conditions demand. At lower speeds, such as on driveways, the throttle provides a composed, gentle response; at highway speeds, throttle pressure is met with a performance-tuned response from the XLR.

3 MAGNASTEER

Courtesy of a computer-controlled electromagnet, the XLR's variable front-effort power rack-and-pinion steering is adjusted as speed necessitates. While seemingly effortless when maneuvering into a parallel parking space, at high speeds the steering feels taut, precise, and controlled.

4 STABILITRAK

The stability enhancement system seamlessly integrates braking, traction control, steering, and suspension systems. Without over-governing your driving style, it analyzes input from a series of sensors, applying brake force at the appropriate wheel (or wheels) to help keep the XLR on its driver-intended path. If necessary, it can even activate the brakes at all four wheels to help sustain control.



5 DOUBLE-WISHBONE SUSPENSION

Exhibiting outstanding road holding powers, the XLR's suspension system is poised to deliver a composed, compliant ride. Lightweight, transverse-mounted composite front and rear leaf springs are rubber-isolated to the chassis to absorb oscillation; low spring rates enhance ride quality and wheel control.

6 WORLD-CLASS STRUCTURE

The foundation for the XLR's stellar ride characteristics and handling remains its patented structure. Composed of aluminum, magnesium, and other advanced materials these elements help maintain the XLR's low weight while providing resistance to torsion and bending forces.

7 MAGNETIC RIDE CONTROL (MRC)

A duo of advanced electronics and inventive magneto-rheological fluid-based struts, the Magnetic Ride Control system reads every three centimeters of road at 96 km/h to adjust shock absorber damping.

8 FULL-FUNCTION TRACTION CONTROL

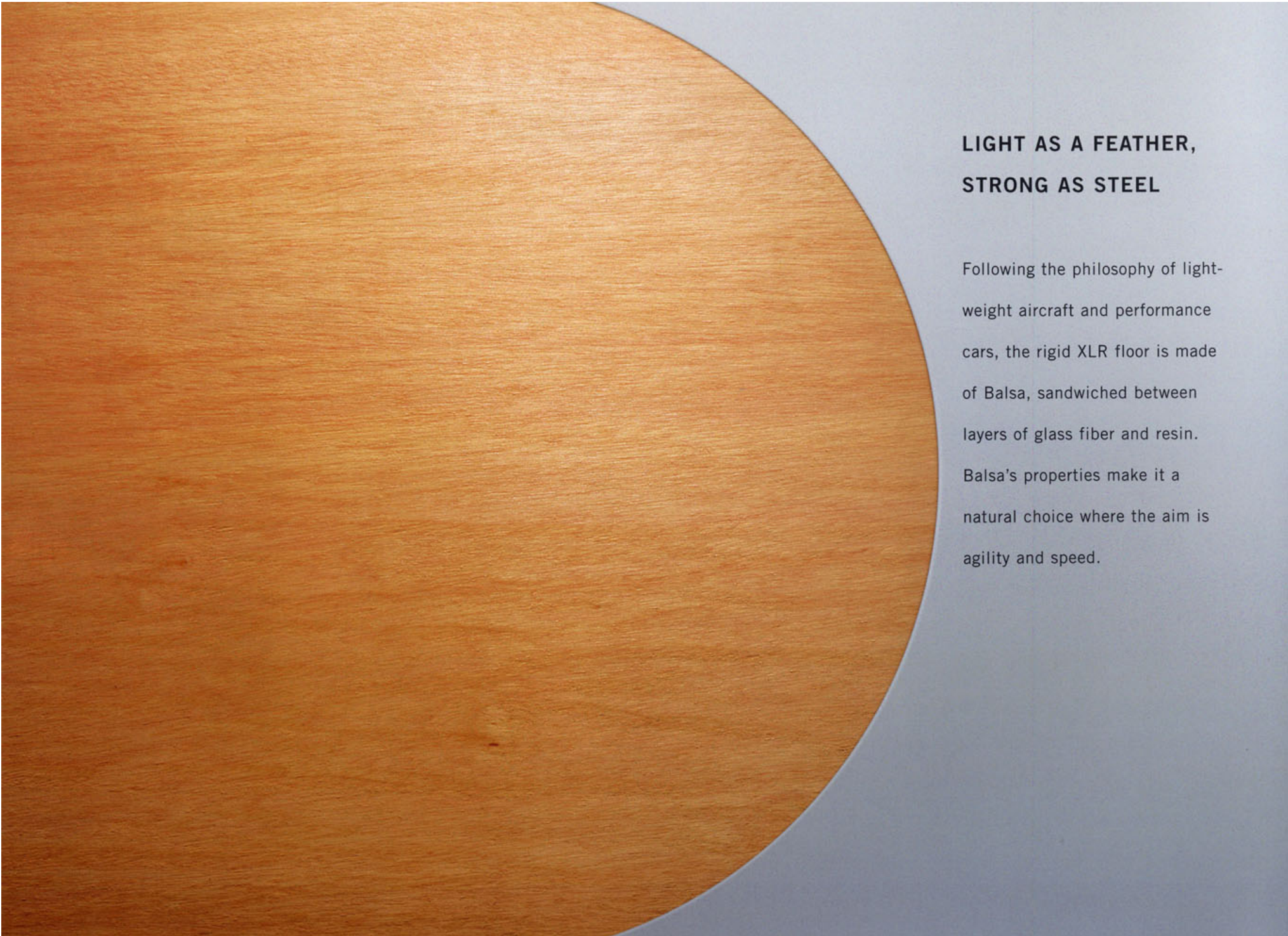
Full-function, all-speed Traction Control combines both torque and brake control to regulate wheel spin for maximum driver control regardless of road texture or driving conditions.

SIMPLY THE BEST

The wood, tastefully integrated into shift knob, console, doors, and cup holder compartment, is eucalyptus. Imported from Spain, chosen for its distinctive character, warm cast, and three-dimensional grain. The seating surfaces, door trim panels, armrests, center console, and steering wheel are trimmed with supple, French-seamed leather. Together with true metallic accents these materials create a luxuriously warm and inviting interior environment.

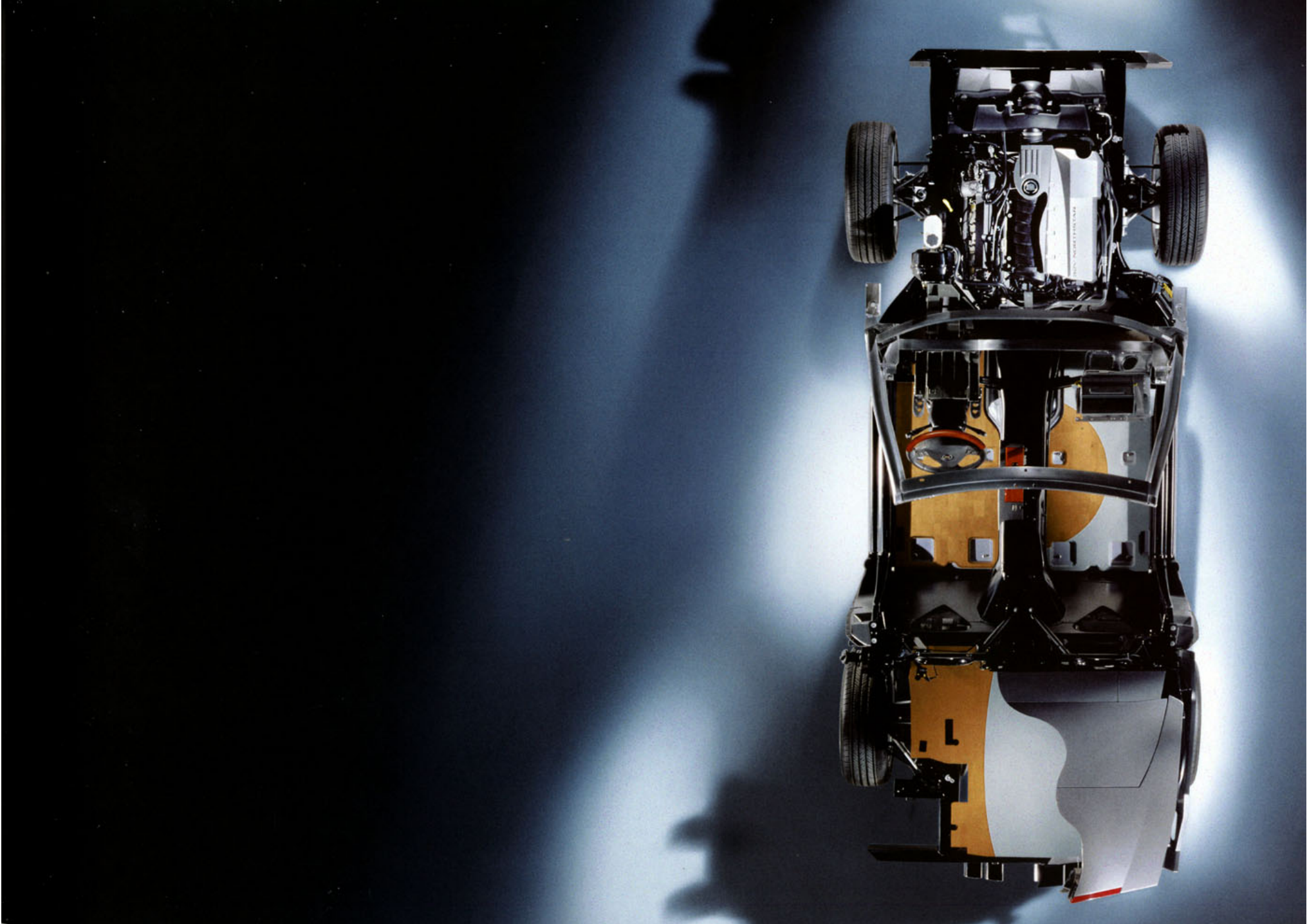






**LIGHT AS A FEATHER,
STRONG AS STEEL**

Following the philosophy of lightweight aircraft and performance cars, the rigid XLR floor is made of Balsa, sandwiched between layers of glass fiber and resin. Balsa's properties make it a natural choice where the aim is agility and speed.

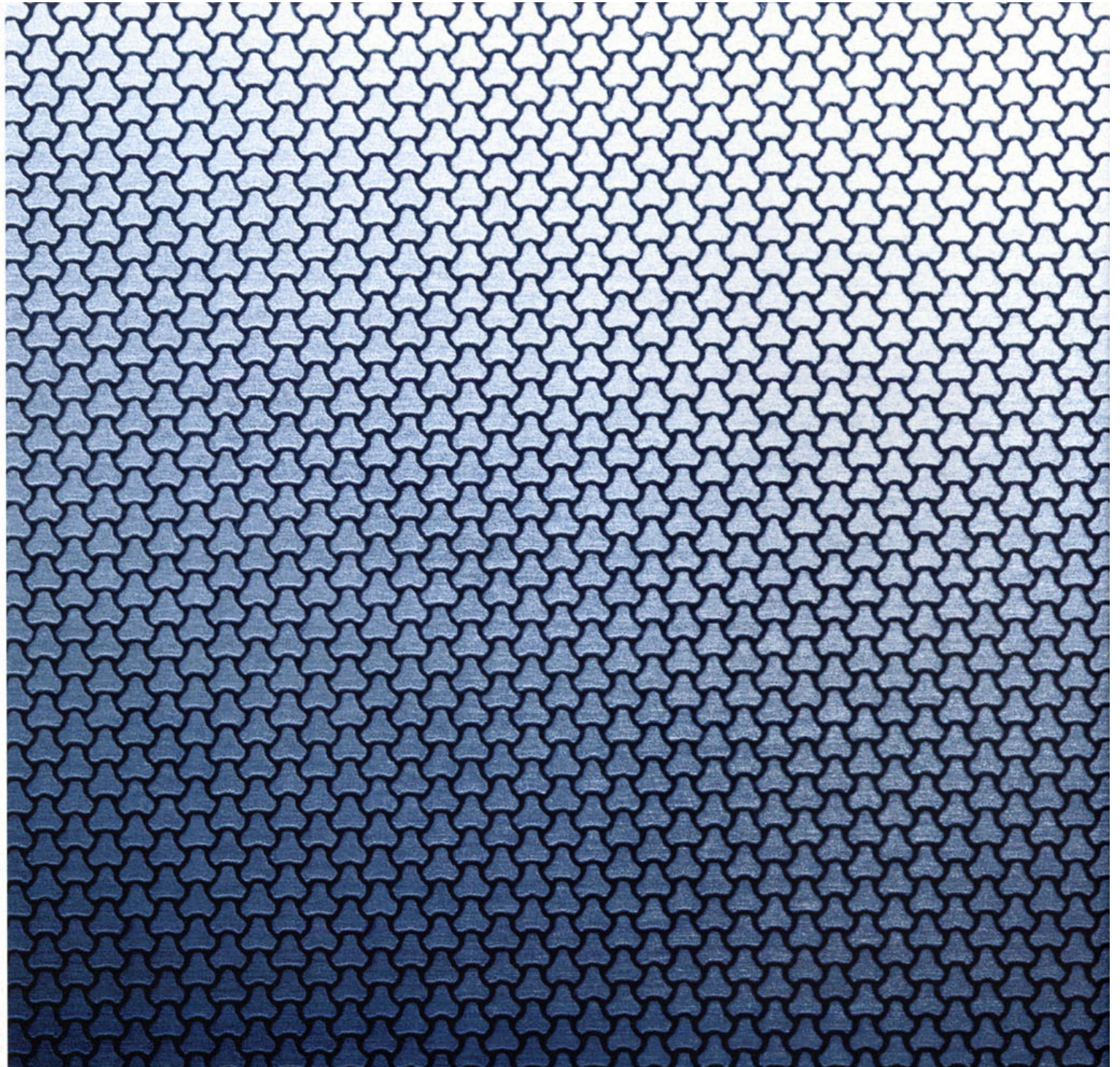


YES, IT IS BVLGARI

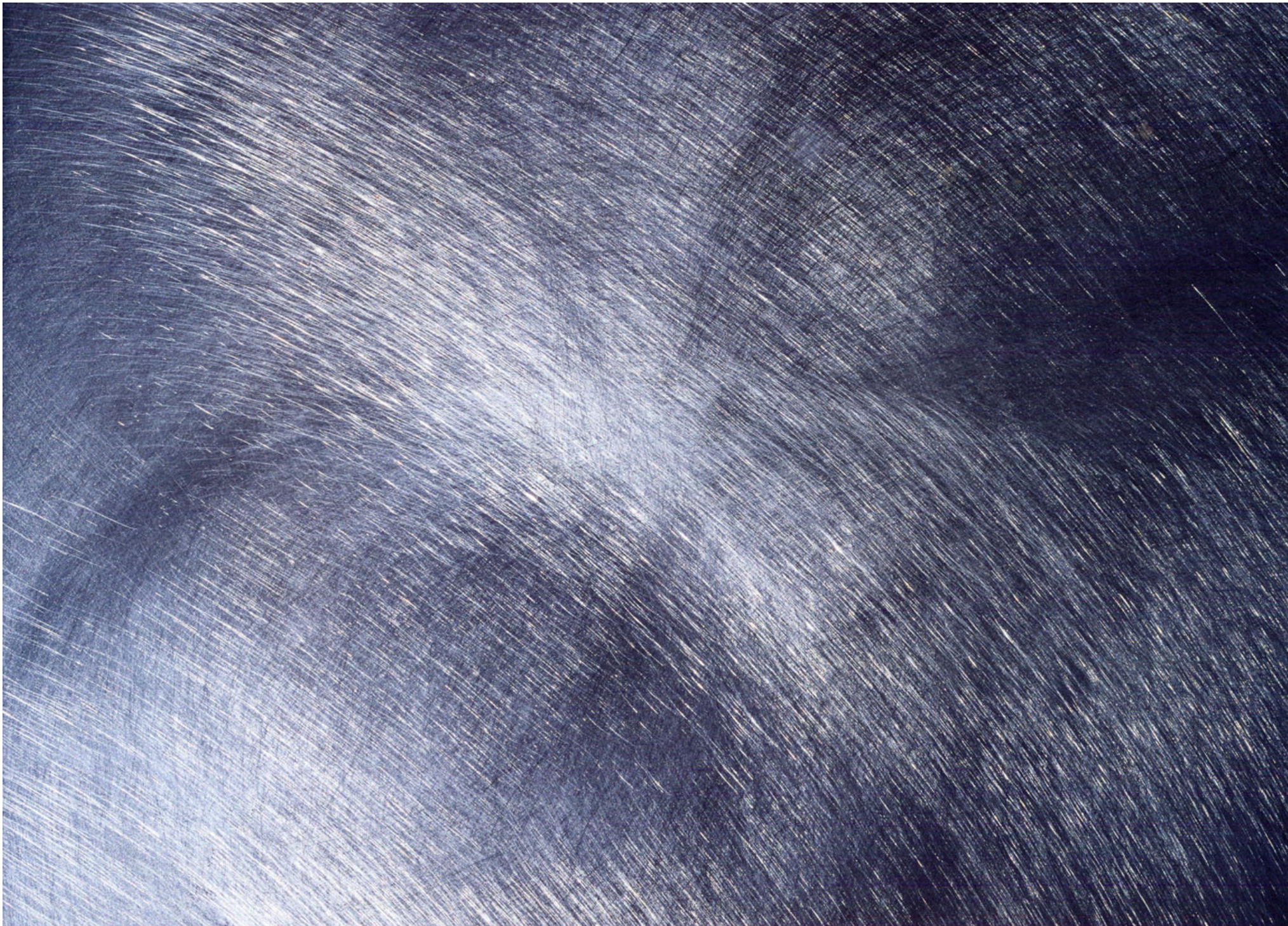
The famed Italian jeweler created the metal-dipped instruments.

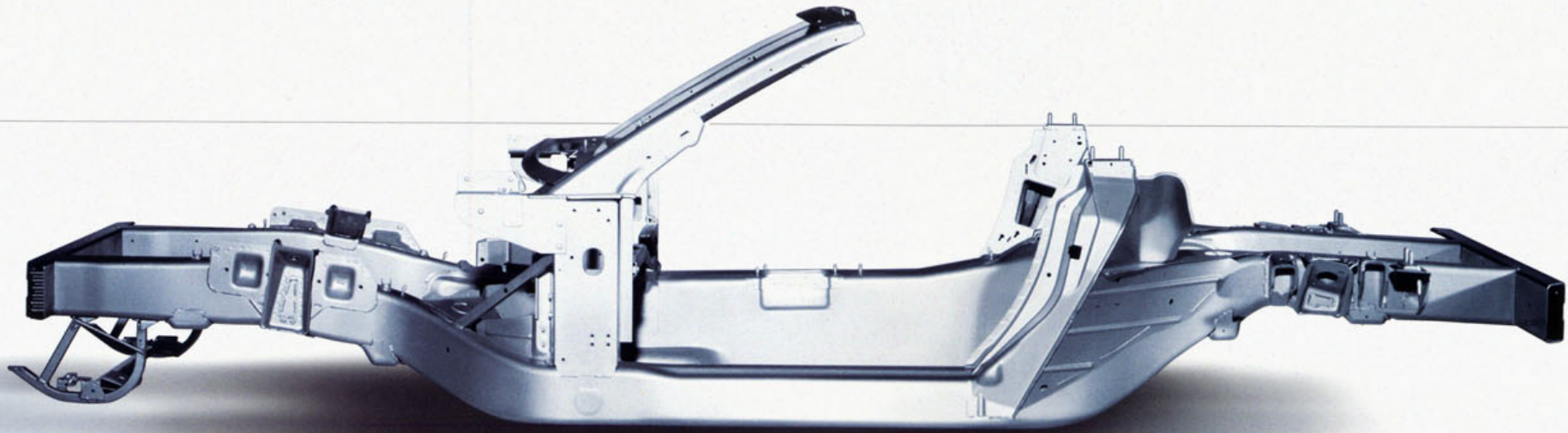
Their matte finish of anodized aluminum is a harmonious match with the roadster's eucalyptus wood interior.

The clean, subtle functionality of the instruments also resists glare in the sunlight, whenever a top-down opportunity arises.









NO SHAKES, NO RATTLES, NO SQUEAKS

The structure of the XLR is truly impressive. Strongly integrated into the chassis, its aluminum cockpit is light yet staggeringly rigid (thus, the impressive power-to-weight ratio). Aluminum's purposeful characteristics underline its use in the sliding-style calipers, double-wishbone fuel lines, suspension cross-members and brake pedal – as well as the gleaming incarnation of 18-inch wheels.

SENSE AND SENSIBILITY

Adaptive Cruise Control allows you to set a cruising speed, and, courtesy of radar sensor, gives you freedom to choose a headway distance from vehicles in front of you. Should the system detect you approaching another vehicle, it slows you down to keep you at your selected distance. When traffic clears, it conveniently accelerates your XLR back to your set speed.





RAISE YOUR VOICE

If you speak to your XLR, it will understand 170 commands and allow you to operate key entertainment and navigation systems.

You can also tuck away the Bvlgari-designed remote quietly in your pocket. While parked you can even enjoy DVD movies on the 6.5" liquid crystal display screen.

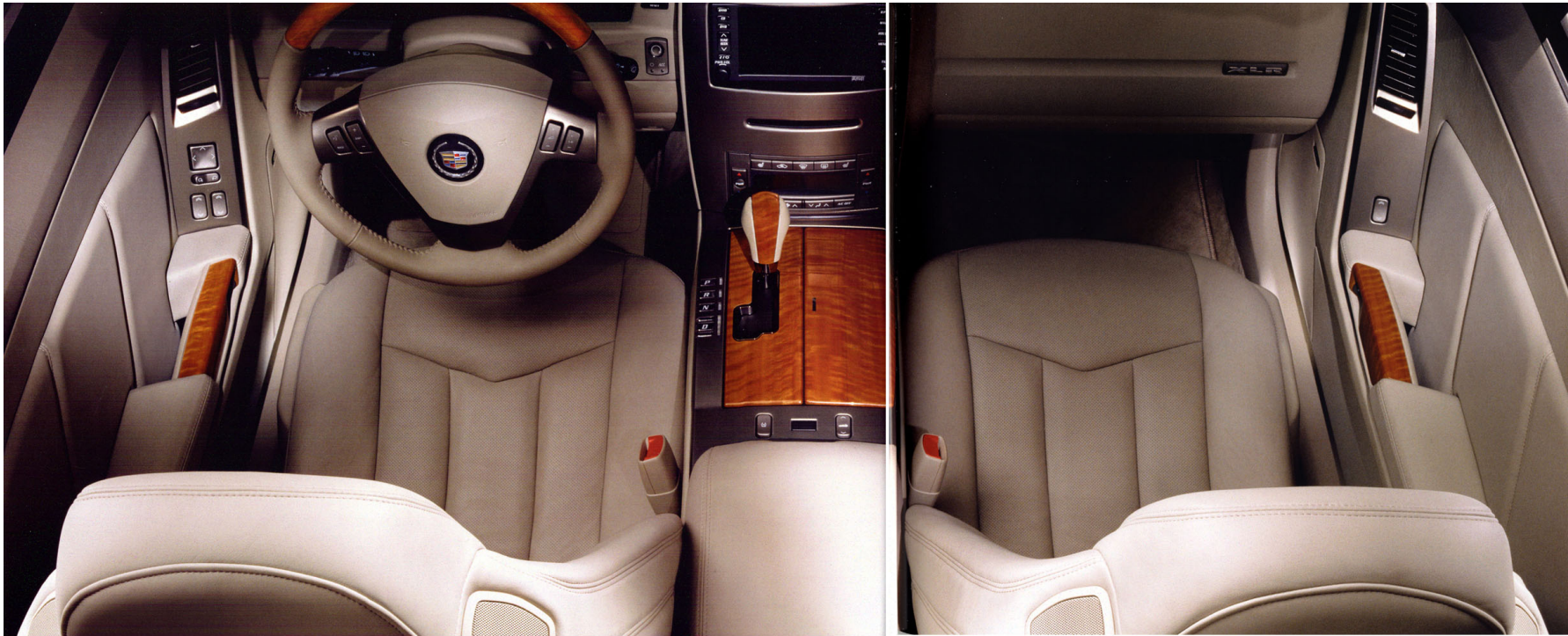




BAND
CD
DVD
TUNE SEEK
PWR

RPT
MAP
ROUTE
MENU
TILT

5:27PM 76°F
VINCENTO'S RESTAURANT
Info.
Return
OFF
N
JEFFERSON ST
CLAY ST
WASHINGTON ST
BROADWAY
4TH ST
2ND ST
3RD ST
7th St
Enter



SOUND CHECK

For true "hardtop-down" stereo, speakers with TrueSpace circuitry are mounted into either side of the head restraints. This lets you enjoy your sound system with AM/FM stereo radio, 6-disc CD-changer and 9 Bose premium speakers. A DVD-based navigation system comes as standard.



FINAL TOUCHES

"Head-Up" Display projects your speed, gear engaged, Adaptive Cruise Control selection, turn signal, headlamp beam, and audio settings on the XLR's windshield, so your eyes can stay focused on the road.

Conceived with simplicity and thoughtfully integrated, even the XLR's handleless doors beckon: an exterior touch membrane gives you clearance after sensing you possess the Bvlgari remote; from inside the doors open at the press of a button.

The XLR remains the only roadster to blow pre-cooled air rather than just merely ventilate its seats. Ceramic discs, embedded within the contours of the XLR's seatbacks and seat cushions continuously adjust surface temperature.



FULL-GRAIN, FRENCH-SEAMED
LEATHER SEATING SURFACES

DUAL-ZONE
LUMBAR
CONTROL

CERAMIC DISCS FOR CLIMATE CONTROL
IN SEATBACKS AND CUSHIONS

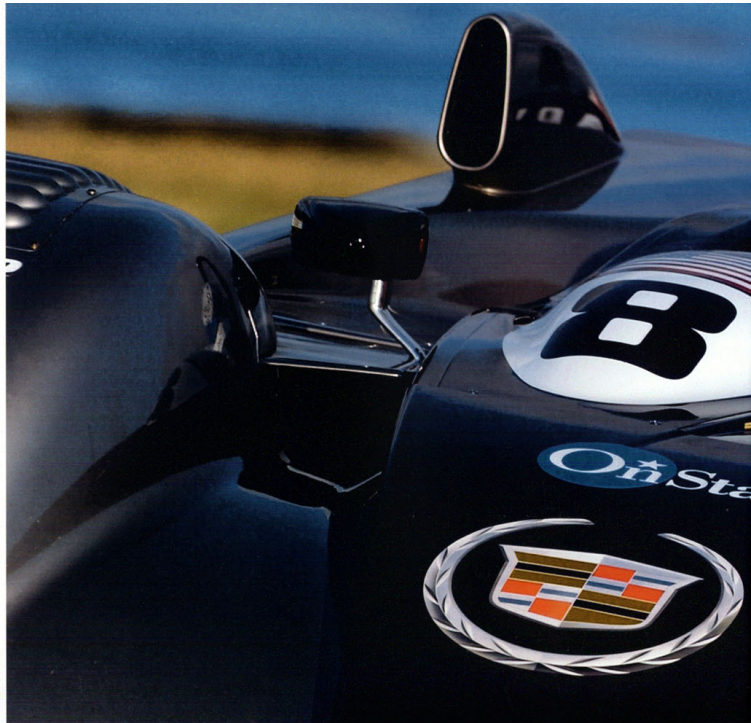
EIGHT-WAY POWER SETTINGS

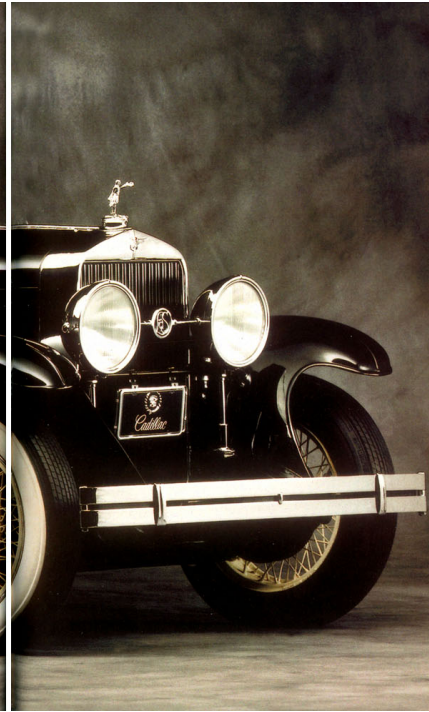
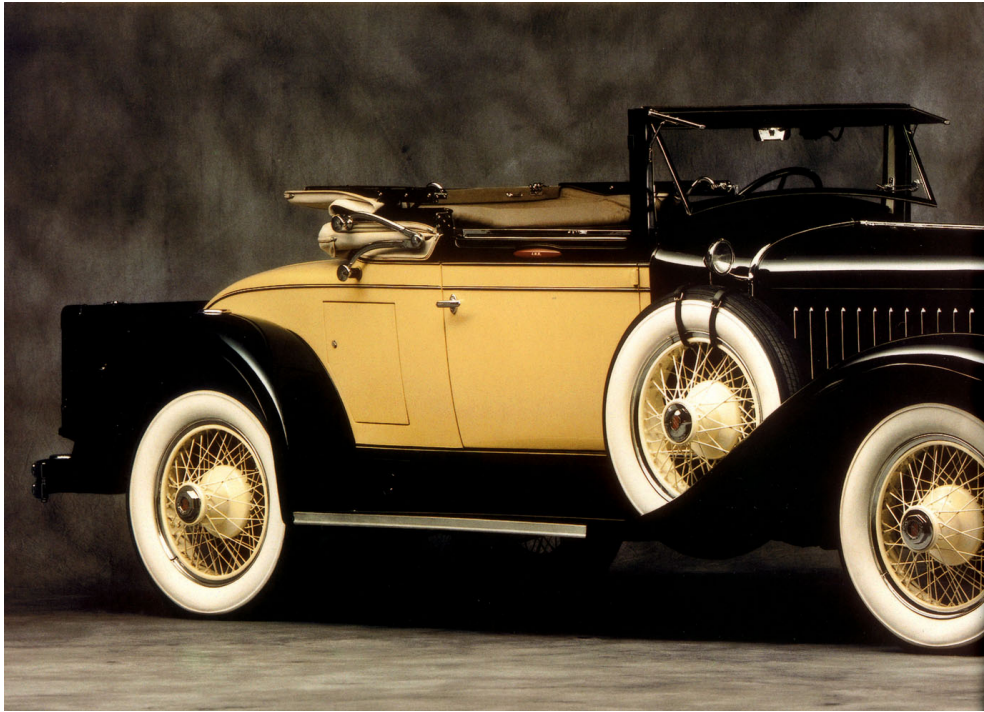
**AND NOW
IT'S UP TO YOU
TO PUSH
THE STARTER BUTTON.**



A RACING LEGEND

Exactly 50 years after entering and successfully racing two Cadillacs at Le Mans, Cadillac returned to the fabled turns of Le Mans to compete in the 2000 and 2001 24-hour endurance race. These intensive learning experiences gained there led to an impressive result in 2002: the powerful Cadillac Northstar LMP 02. A car that embodied the knowledge acquired. It led to new ideas and visions of an adequate performance in racing which will become reality in the near future.





A PASSION FOR STYLE

From 1902 onwards, Cadillac grew its reputation on quality, performance and innovation. But as quality became a given, what really separated Cadillac from the crowd were bold, leading-edge designs. With features that not only spoke of luxury but also set design trends: Harley Earls 1927 LaSalle, the tail fins from 1948 to 1964, the egg-crate grille made famous in 1957, to name just a few design breakthroughs. It was clearly design that drove and still drives Cadillac the most.



BLACK RAVEN



CRIMSON PEARL



LIGHT PLATINUM



SATIN NICKEL



THUNDER GRAY



XENON BLUE



EBONY-INTERIOR



SHALE-INTERIOR





CAPACITIES AND DIMENSIONS

Length (mm)	4514
Width (mm)	1836
Height (mm)	1280
Wheelbase (mm)	2685
Min. ground clearance (mm)	168
Track width (mm)	1580
Seating Capacity (Front/rear)	2/0
Head room (mm)	955
Leg room (mm)	1082
Cargo volume (l), Top up/top down	329/125
Curb weight (kg)	1654
Max. allowable weight (kg)	1825
Fuel tank capacity (l)	69

ENGINE AND TRANSMISSION

	Northstar 4.6-I-V8 VVT (variable valve timing)
Engine	4.6l DOHC V-8
Valve train	DOHC, 4 valves per cylinder, 4-cam continuously variable valve timing
Drive system	Rear wheel drive
Engine block/cylinder heads	Cast aluminum
Bore & stroke (mm)	93 x 84
Displacement (cc)	4565
Compression ratio	10.5:1
Fuel feed system	Sequential electronic fuel injection
Fuel type	Unleaded premium
Performance (kw/hp/rpm)	240/326/6450
Max. torque (Nm/rpm)	423/4400
Transmission	Rear mounted Hydra-Matic, electronically-controlled 5-speed automatic with torque converter clutch and Driver Shift Control
Top speed (km/h)	250
Acceleration 0-100km/h (sec.)	5.9
Fuel consumption 99/100/EC (l/100km urban/extra-urban/mix)	18,2/9,0/12,3
CO2 emission (g/km)	291

CHASSIS AND SUSPENSION

Front/rear suspension	Short/long arm (SLA) double wishbone, cast aluminum upper & lower control arms, transverse-mounted composite leaf spring, monotube shock absorber
Suspension	Magnetic Ride Control
Steering type	Magnasteer power-assisted rack-and pinion
Wheels	8" x 18" spun-cast aluminum
Tires (Front/rear)	Michelin ZP Extended Mobility P235/50R18
Braking system	Power-assisted disc with 4-channel ABS, front and rear

STANDARD EQUIPMENT INTERIOR

Dual zone climate control
Adaptive Cruise Control
Head-up display
Heated and cooled seats, front bucket leather
Steering wheel, wood/leather
Sound system, BOSE premium
Rear view mirror, light sensitive
Instrumentation, BVLGARI design
Keyless entry system
Advanced DVD navigation & DVD entertainment system

STANDARD EQUIPMENT SAFETY

Anti-lock braking system, ABS
Airbags, front side impact
Tire pressure monitor system
Rear Parking Assist

STANDARD EQUIPMENT EXTERIOR

Electrically adjustable, power folding, heated rearview mirrors
Retractable hardtop



Every Cadillac purchased from an authorized Retailer comes with General Motors Warranty protection for the first three years or 100,000 km from the date of initial registration. All metal panels are guaranteed against rust through perforation for 72 months, regardless of the number of kilometers driven. The General Motors Customer Protection System gives you around-the-clock Roadside Assistance 7 days a week, 365 days a year throughout. For the latest updates of the technical specifications check www.cadillac europe.com.



www.cadillaceurope.com

Every Cadillac carries a 3-year or 100,000-km (whichever comes first) guarantee. It has a 6-year anticorrosion guarantee, and does not need a major tune-up for 165,000 km. Cadillac Assistance gives you reassurance for a period of 36 months starting on the registration date, 24 hours a day, 365 days a year. Service points throughout Europe will organize and pay for the resulting costs of all services (prior approval pending). Some illustrations in this brochure feature special equipment that is not included in standard delivery. The information contained in this brochure was accurate at the time of going to press. We reserve the right to make changes in design and equipment. The colors printed in the brochure only approximate actual colors. Illustrated optional equipment is available at extra charge. Availability, technical features and equipment provided on our vehicles can vary from one market to another and may change without prior notice. Information on recycling design, recycling End of Life Vehicles (ELV) and the return locations of ELVs can be found on the website www.cadillaceurope.com. For precise information on the equipment provided on our vehicles, please contact your Cadillac retailer.