

CADILLAC

Allanté

STYLE



STYLÉ



CADILLAC



C A D I L L A C

S T Y L E



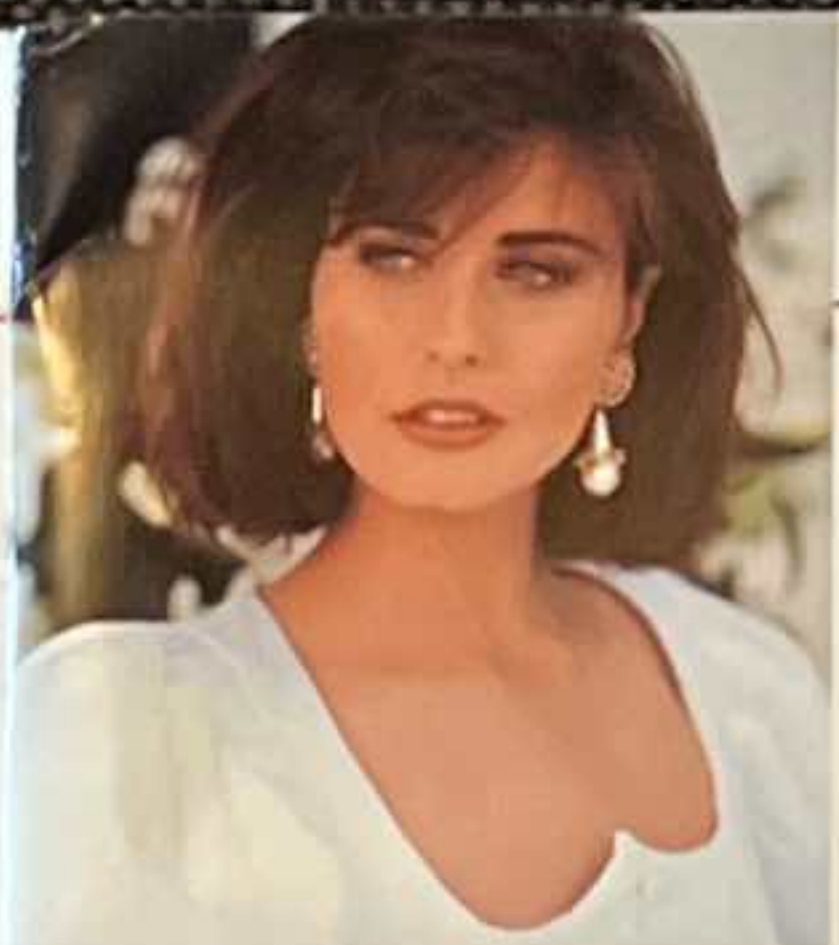
C A D I L L A C

S T Y L E

Allanté

An ultra-luxury roadster from Cadillac for those with the most discriminating standards. Allanté. Designed and handcrafted by the world's foremost automotive designer. The most sophisticated technology in its class.

Unequaled comfort and unmatched convenience. And Cadillac's protocol to make you the most cared-for owner in the world.







Allanté's final assembly facilities include an adjacent test track where a 25-mile evaluation helps assure flawless operation.

Crafted like no other car in the world.

To satisfy the most discriminating taste in world-class automobiles, Cadillac began by commissioning Pininfarina, Europe's most renowned and respected automotive designer. His past creations include the Ferrari Testarossa and Rolls-Royce Camargue. The coachwork of Allanté is crafted in the Italian studios of Pininfarina and then flown to the United States for final assembly.



The Allanté Airbridge. A fleet of specially modified Boeing 747's transports the hand-crafted Allanté bodies from Italy to America.



Doors, hood, rear deck lid and fenders are handfitted by skilled Italian craftsmen.

Pininfarina's wind tunnel is a design tool that has helped Allanté engineers reduce traditional convertible wind noise from Allanté. So that at 55 mph, driver and passenger can hold a normal conversation with the top down.







With hands firmly planted on the wheel, there exists a natural harmony between Allanté and its driver.

A most advanced ultra-luxury roadster.

The exhilaration of open-air driving has always held a certain allure to the true driving enthusiast. The sophisticated engineering of Allanté expands the parameters of its performance. For with its spirited 200 horsepower engine with sequential-port fuel injection, a Speed Dependent Damping suspension system, Variable Assist Steering, and exclusive high-performance tires, Allanté possesses the precise handling and crisp response that characterize a car with European road manners. Yet it accomplishes this feat without relinquishing any of the comfort and convenience for which Cadillac is world renowned.



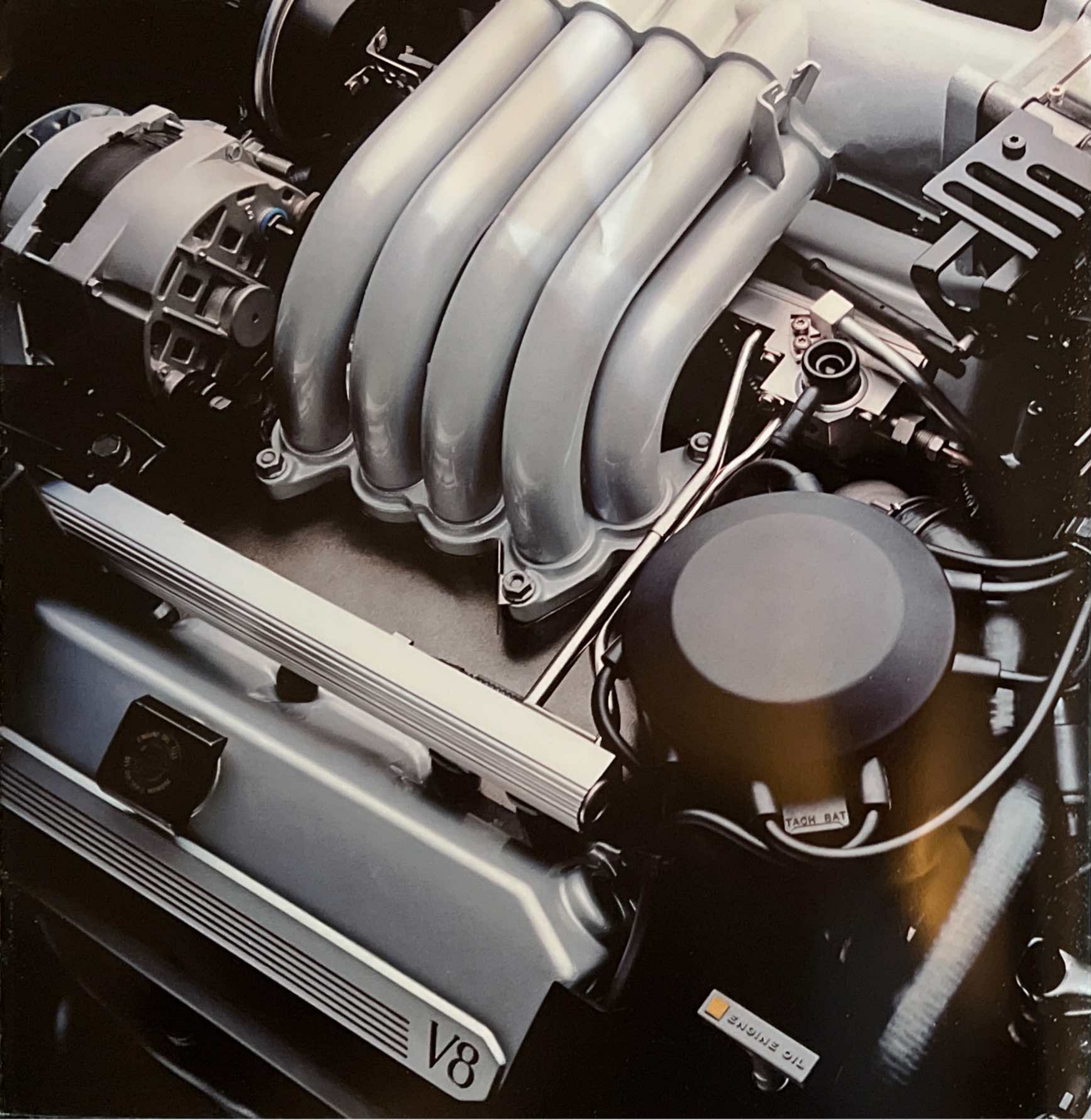
Allanté's Speed Dependent Damping feature electronically provides additional ride control at higher speeds while protecting occupants from jarring bumps at lower speeds.



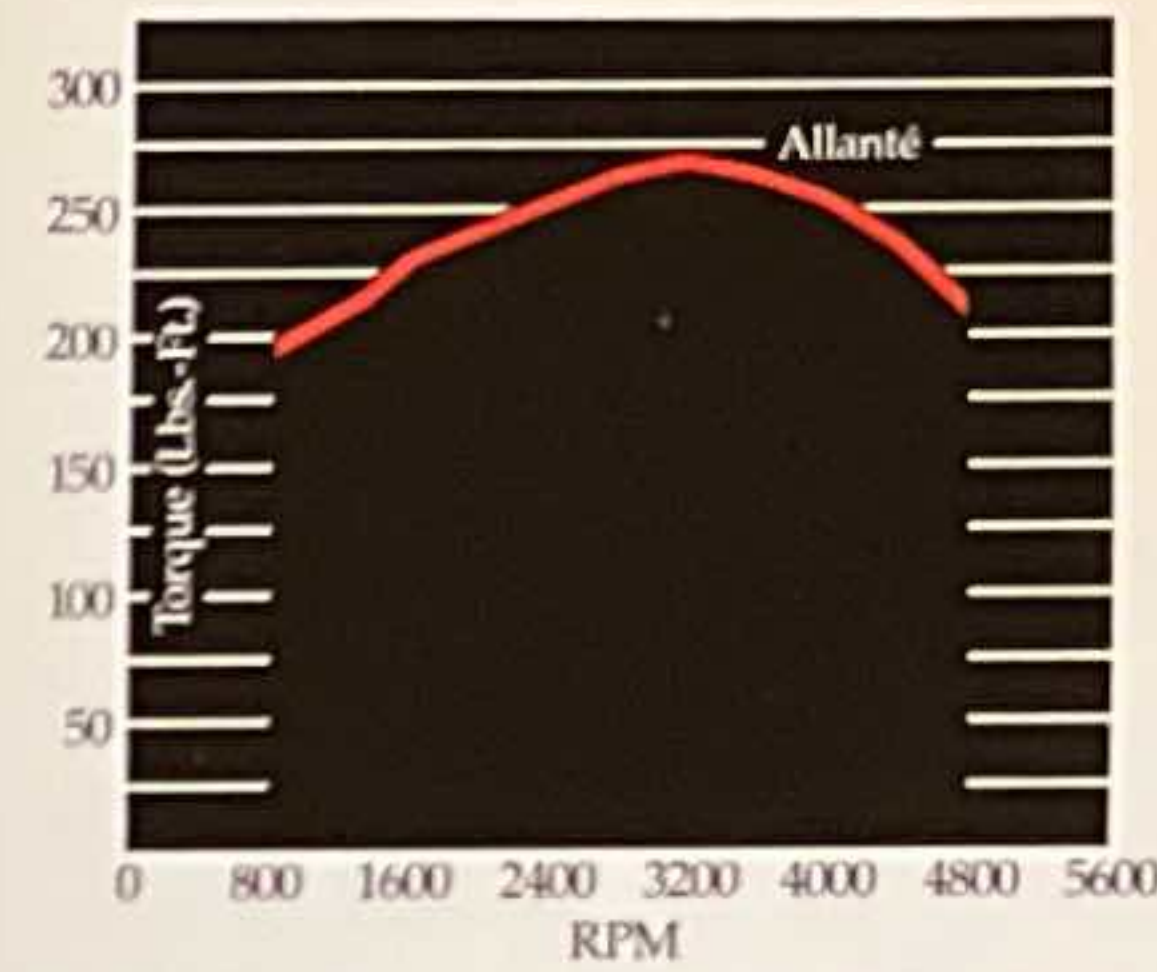
Allanté's exclusive 16" x 7" wheels and Goodyear Eagle V-rated P225/55VR16 tires help assure responsive handling.

Variable Assist Steering helps assure Allanté stability and on-center feel on the highway and provides full assist, making Allanté easy to maneuver in tight parking spaces.





Although Allanté has been engineered to produce outstanding power, it also attends to the needs of those who require more than just top-end performance.



Allanté's 4.5 liter engine creates 270 lbs.-ft. of torque at 3200 rpm—more torque than any other front-drive automobile.

Power where you need it the most. Allanté's 200 horsepower, 4.5 liter V8 engine with sequential-port fuel injection includes tuned intake runners that help boost power and torque. Together with an improved-flow air cleaner, new cylinder heads, a 9.0:1 compression ratio and low-restriction exhaust manifolds, this high-spirited engine produces abundant torque for sharper mid-range performance and lively response.



A staged, twin-throat throttle body with sequential-port fuel injection assures precise fuel delivery timing.

Engineers also redesigned the staged twin-throat throttle-body secondary opening rate that further contributes to Allanté's power. Equally significant refinements were given to its computerized powertrain management system, which simultaneously regulates the engine, transaxle and cruise control to produce the most coordinated operation possible.

Speed Dependent Damping for ideal ride and handling at any speed.

Speed dependent damping, exclusive to Allanté, provides remarkable ride and handling by automatically adjust-



Strut damping is adjusted automatically based on vehicle speed and brake input to help provide optimum ride and handling at any speed.

ing the firmness of the suspension in relation to vehicle speed. This electro-mechanical system uses a computerized control module to adjust an electric motor at each strut to automatically select one of three damping level positions, "comfort," "normal," or "sport." Damping level selection occurs automatically in 3/10 of a second and is based primarily on vehicle speed. As the vehicle speed increases, the firmness of the suspension increases for additional ride control at higher speeds.

The shocks are also shifted into their firmest mode when the brakes are applied above 35 mph to limit brake dive, and the system stays in the firmest mode between 0 and 5 mph to limit acceleration lift.

Variable Assist Steering. For stability at highway speeds and maneuverability around town.

Since a vehicle requires less power steering assist at highway speeds than during parking maneuvers, Cadillac implemented a flow-regulated system that not only offers enhanced steering



As vehicle speed increases, the flow of hydraulic fluid to the steering mechanism decreases for a firmer, more stable steering feel at highway speeds and easy, minimum effort maneuverability at lower speeds, it also reduces steering system temperatures and engine power consumption. The variable assist steering pump reduces the flow rate as a function of engine speed. This is accomplished through a variable orifice located within the pump. At engine idle, the variable orifice remains in the full open position to provide full assist. As engine speed increases, however, the orifice decreases in area, resulting in a reduction in flow and assist levels. With reduced power steering assist at high speeds, steering effort increases, helping maintain stability and on-center feel.

A new oil change indicator. A convenient way to protect your engine.



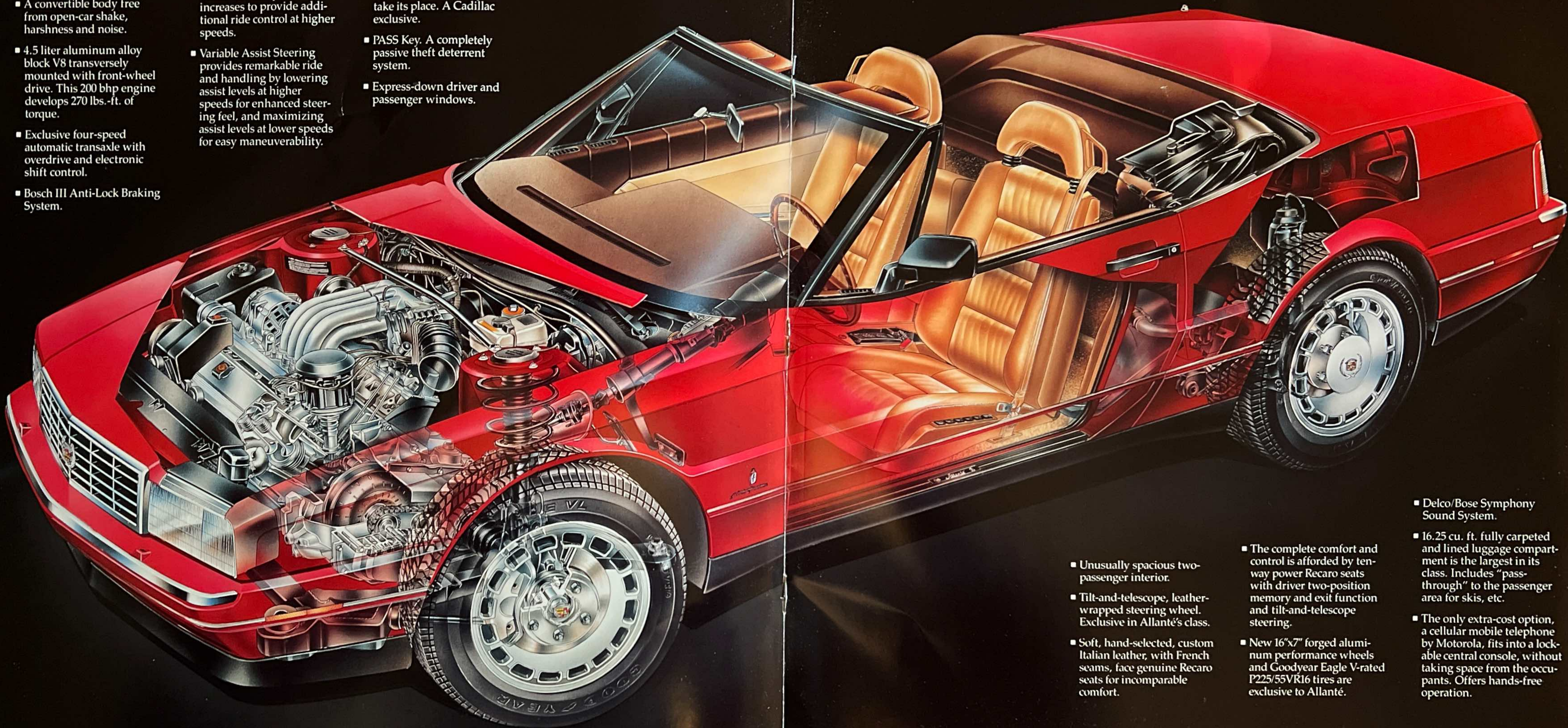
An oil life indicator suggests optimal oil change intervals.

The new engine oil change indicator monitors the life of the car's oil based on a maximum of 7500 miles or factors such as climate and driving habits. When the oil life index reaches zero on the driver information center, oil replacement is recommended within two weeks or 300 miles.

- Coachwork styled, engineered and built by Pininfarina of Italy.
- A convertible body free from open-car shake, harshness and noise.
- 4.5 liter aluminum alloy block V8 transversely mounted with front-wheel drive. This 200 bhp engine develops 270 lbs.-ft. of torque.
- Exclusive four-speed automatic transaxle with overdrive and electronic shift control.
- Bosch III Anti-Lock Braking System.

- Speed Dependent Damping electronically increases the firmness of the suspension as the vehicle speed increases to provide additional ride control at higher speeds.
- Variable Assist Steering provides remarkable ride and handling by lowering assist levels at higher speeds for enhanced steering feel, and maximizing assist levels at lower speeds for easy maneuverability.

- If a lamp burns out, a unique multiplex wiring system automatically substitutes a related lamp to take its place. A Cadillac exclusive.
- PASS Key. A completely passive theft deterrent system.
- Express-down driver and passenger windows.



- Unusually spacious two-passenger interior.
- Tilt-and-telescope, leather-wrapped steering wheel. Exclusive in Allanté's class.
- Soft, hand-selected, custom Italian leather, with French seams, face genuine Recaro seats for incomparable comfort.

- The complete comfort and control is afforded by ten-way power Recaro seats with driver two-position memory and exit function and tilt-and-telescope steering.
- New 16"x7" forged aluminum performance wheels and Goodyear Eagle V-rated P225/55VR16 tires are exclusive to Allanté.

- Delco/Bose Symphony Sound System.
- 16.25 cu. ft. fully carpeted and lined luggage compartment is the largest in its class. Includes "pass-through" to the passenger area for skis, etc.
- The only extra-cost option, a cellular mobile telephone by Motorola, fits into a lockable central console, without taking space from the occupants. Offers hands-free operation.



The express-down window feature allows you to spend less time activating the window control and more time in control of the car.

Comfort with a purpose.

Allanté's reason for being is to take the "pleasure of motoring" philosophy farther than any car maker has ever taken it before.

Thus, Allanté is instilled with some of the most thoughtful conveniences of any automobile in the world. You'll notice this immediately as Allanté integrates you within its environment. Controls are designed to be reached quickly and comfortably. So you can concentrate on what's most important. The driving experience itself. One intended to be the best you've ever had.



Allanté's ten-way power adjustable Recaro seats.



Anatomically designed Recaro seats utilize a soft foam cushion and hand-selected, custom Italian leather seating areas for remarkable comfort.



Allanté's cockpit features a tilt-and-telescope, leather-wrapped steering wheel and digital or all-analog instrumentation at your request.







Unsurpassed luggage space. Allanté has the largest luggage compartment of any roadster sold in America. A full 16.25 cubic feet. And



its versatility includes a "pass-through" to the passenger compartment that allows you to transport such items as skis.

All locks unlock both doors. Central Door Unlocking is a feature that enables you to unlock both doors by turning the key twice in any lock, including the luggage compartment.

Dimensions of comfort never before available in an ultra-luxury roadster. Passengers are also treated to a spacious environment with nearly five feet of shoulder room in the cabin area.

Allanté hardtop fastens quickly into place without tools.

And the comfort continues with European-built Recaro seats that are the benchmark in support and comfort. They are designed to adjust ten different ways, and the driver's memory seat can be programmed to remember two separate seat adjustments plus an



Custom leather-covered articulating headrest. "exit" position. It should also be noted that Allanté's seating areas are finished in a hand-selected custom Italian leather with French seams, making them as inviting as they are durable.

A lightweight roof that's easy to remove. Allanté's stylish hardtop weighs a scant 58 lbs. It fastens quickly into

place without tools and features glass quarter windows and rear window glass with electric defogger.

Allanté compensates for less than ideal climates—even with the top down.

Comfort in an open-air roadster can sometimes be subject to the whims of Mother Nature, but Cadillac has prepared for this as well. Allanté has an Electronic Climate Control system with a special setting that emits a comfortable flow of air during top-down motoring.



Allanté's Delco/Bose Symphony Sound System offers the sound balancing capabilities of a 32-band equalizer—automatically.

An audio system befitting an ultra-luxury roadster.

Even Allanté's sound system is unique. It's a premium Delco/Bose Symphony Sound System that's been specifically tuned and acoustically matched to Allanté's interior. By optimizing performance for each seating position, the system offers the sound balancing capabilities equivalent to a 32-band graphic equalizer—automatically. The system features a separate AM/FM stereo tuner-pre-amplifier and individual power amplifiers for each of the four 4" full-range Bose-patented speakers. There's also a superb auto-reverse cassette deck with automatic tape equalization and Dolby® noise reduction.

Allanté has but one extra-cost option. A cellular mobile phone by Motorola. Everything else comes standard.

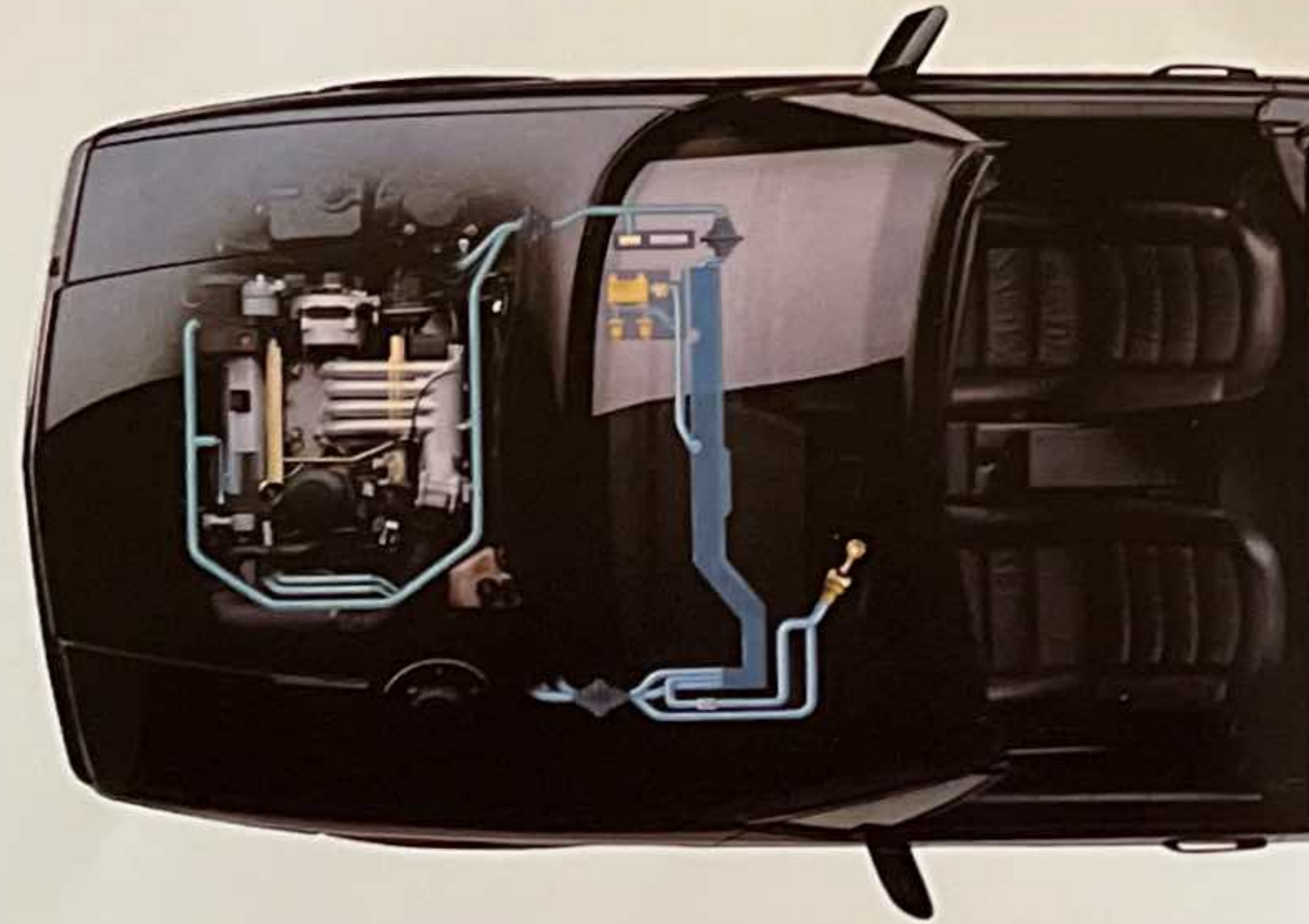


Safety as an integral component.

The most comforting aspect of Allanté may well be the knowledge of its safety-conscious design. Conceived as an open-air roadster, Allanté was designed to incorporate a state-of-the-art braking system. Allanté was the first car in the world equipped with the Bosch III Anti-Lock Braking System. Anti-lock braking will reduce the chance of locking any wheel during hard braking and will help maintain steering control. This is made possible when the system's computer reacts to impending wheel lockup signals sent from any wheel. The anti-lock computer begins adjusting braking pressure to each front wheel independently. And to the rear wheels as a pair. The computer adjusts braking even if the individual wheels are on different road surfaces. The result: brake modulations up to 15 times per second—faster and more accurate than is humanly possible.



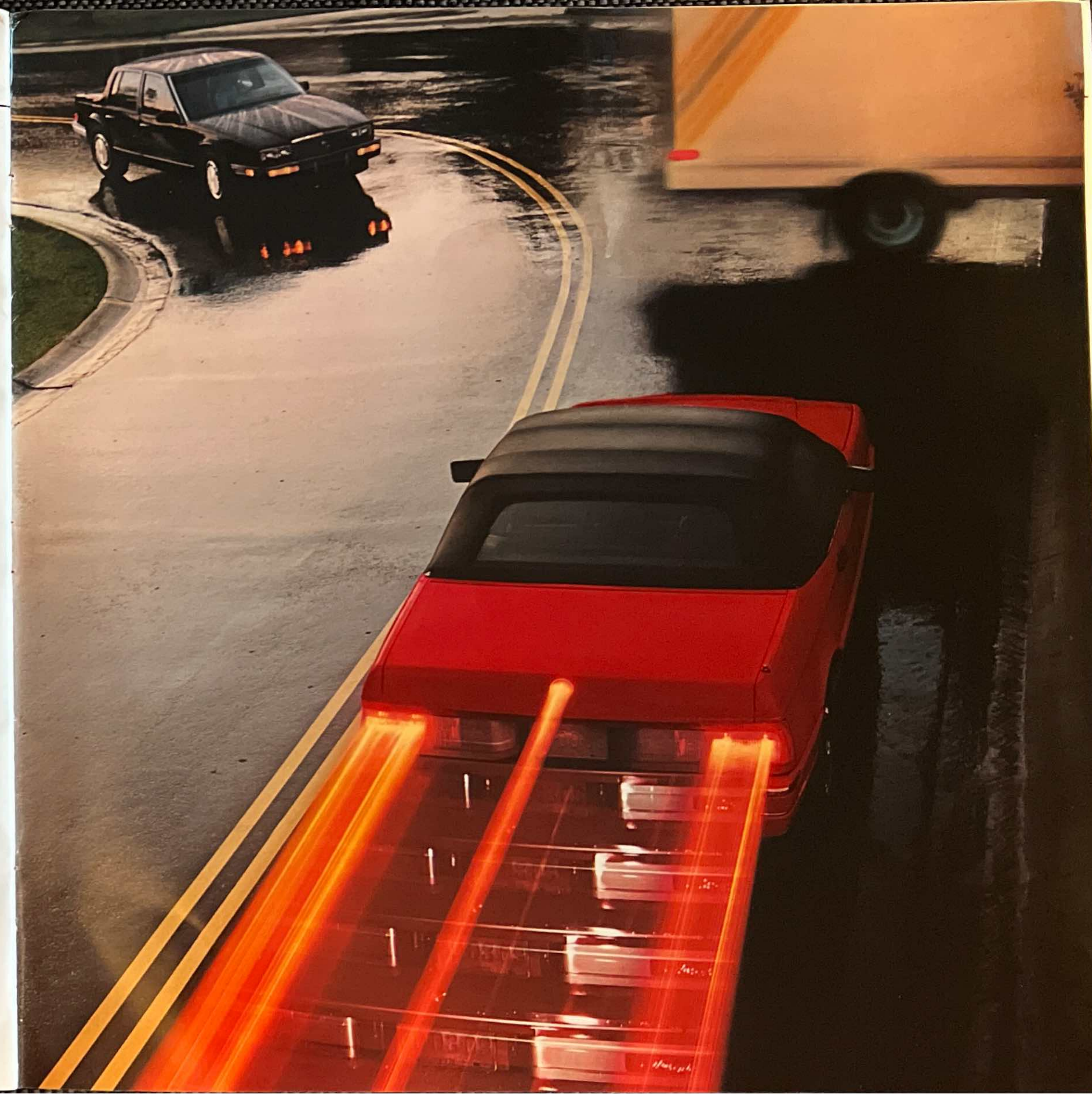
To protect itself from unwarranted operation, Allanté features PASS Key—a completely passive theft-deterrent system that does not require any action to arm or disarm the system other than your normal starting operation. See page 29 for further detail.



Power-operated washer system for headlamps and foglamps.



Allanté's exclusive multiplex wiring acts as a back-up system. It allows a non-functioning lamp to be substituted by a nearby lamp until replaced.



The most cared-for owner in the world.

Owning an Allanté entitles you to the finest coverage available on any car you can buy in America, foreign or domestic. You'll receive the Allanté Assurance Plan that accords you a number of assurances and courtesies unavailable to other owners of prestigious automobiles. And these assurances receive added impetus through Cadillac's Roadside Service program.

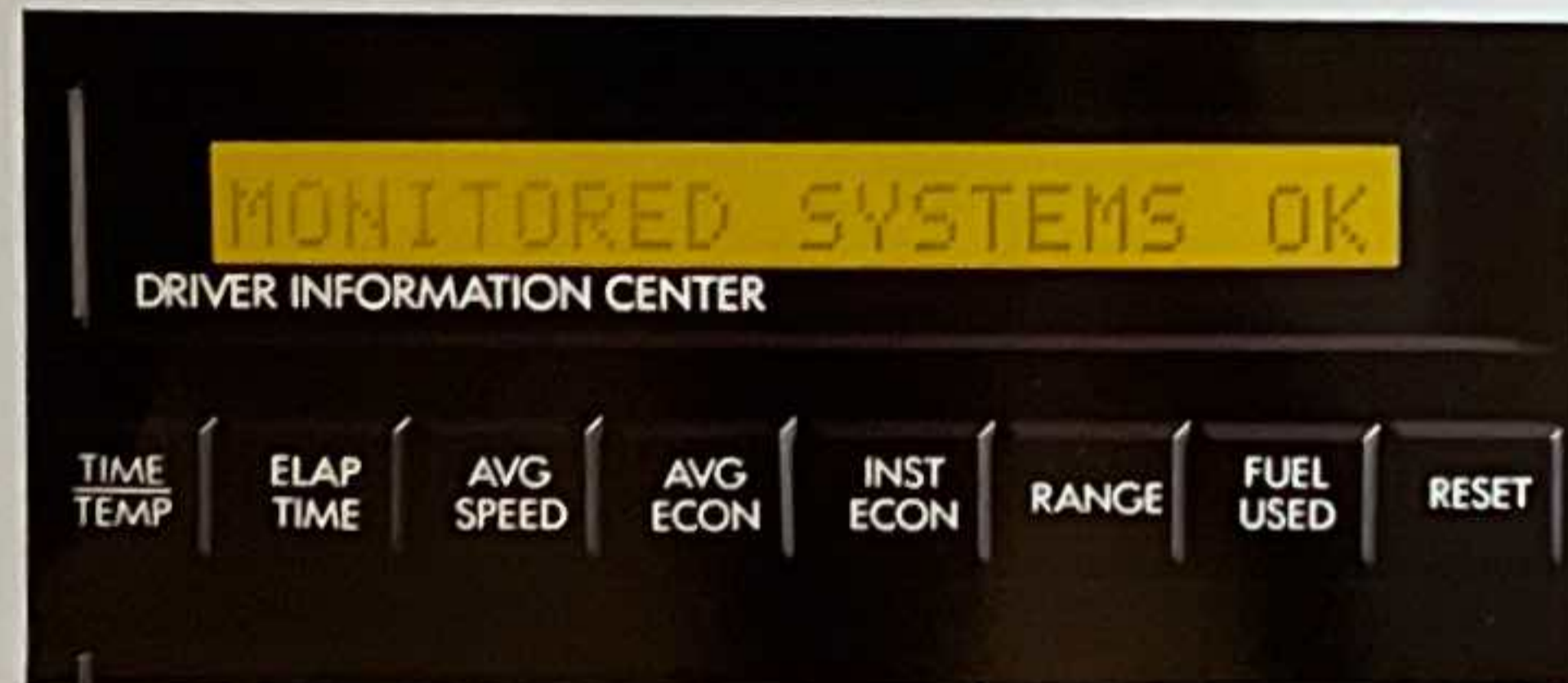
Cadillac is so confident in the inherent quality of Allanté that they guarantee the resale value of the automobile. No other ultra-luxury automobile offers that.

It's Cadillac's way of demonstrating their philosophy on quality—that an automobile built with such attention to detail and meticulous craftsmanship as Allanté should be protected with coverage of equal merit.

An exclusive toll-free number, 1-800-Allanté, is available for information and assistance.



Using the most advanced communications system of its kind, Cadillac Roadside Service can pinpoint your exact location—and the nearest Cadillac dealer—from your roadside phone number.



The on-board computer on Allanté can help a service technician find a problem quickly and verify that it was repaired properly.



Cadillac service advisors are always on call for you 24 hours a day, 365 days a year at 1-800-882-1112.



The Allanté Assurance Plan protects your Allanté for the first 100,000 miles.

Allanté Assurance Plan

COVERAGE	1 Yr./ 12,000 Mi.	2 Yrs./ 24,000 Mi.	4 Yrs./ 50,000 Mi.	5 Yrs./ 50,000 Mi.	7 Yrs./ 100,000 Mi.
• Complete Car (\$25 Deductible Per Repair Visit After 1/12)	■	■	■	■	■
• Supplemental (\$25 Deductible Per Repair Visit)				■	■
• Corrosion (Rust-Through) (No Deductible)	■	■	■	■	■

The world's first seven-year/100,000-mile assurance plan.

The Allanté Assurance Plan—the world's first 7-year/100,000-mile assurance plan.

Allanté is built like no other car and backed like no other car. This unique protection is the most comprehensive and exclusive in the ultra-luxury market. See your dealer for terms of this limited warranty.

Your unique privileges include free checkups and oil changes. This all-inclusive Allanté Assurance Plan is designed to make you the most cared-for owner in the world with thoughtful enhancements like rental vehicle provisions should your Allanté require more than two hours' service or overnight work. Three Gold Key inspections including oil and filter changes and unique electronics checks at no added charge. If possible, Cadillac will even fly a factory engineer to your Allanté to assist in a particularly difficult problem.

Cadillac Roadside Service. An unprecedented program.

And as an Allanté owner, you can avail yourself of Cadillac's Roadside Service. The first program of its kind offered by any domestic manufacturer.

In the unlikely event your Allanté needs unscheduled service, your Cadillac Roadside Service advisor is a free phone call away—24 hours a day, 365 days a year. The advisor will ask specific questions to help diagnose the problem and, in many cases, give you instructions over the phone to get you back on the road.

The Cadillac service advisors provide their problem-solving expertise around the clock. They will even help with arrangements for a tow service, a locksmith, hotel accommodations or other vital services—wherever you are in the U.S.

In addition, Cadillac-authorized on-site repair service is available to you every weekend from 5 p.m. to midnight and every weekend and holiday from 8 a.m. to midnight within a 30-mile radius of one of the hundreds of participating Cadillac dealers. A Cadillac-authorized dealer technician will come to your assistance in a specially equipped vehicle, well stocked with special tools and genuine GM parts to help get you on your way. The dealer technician will even provide you and your passenger with courtesy transportation to a local destination if more extensive service is required.

It's our way of demonstrating that Cadillac takes quality service as seriously as it takes building an ultra-luxury roadster unlike any other.

Guaranteed Resale Value

Allanté is the only ultra-luxury automobile in the world that guarantees its resale value. It means you'll receive a guaranteed percentage of Allanté's purchase price in trade on any new Cadillac, as long as your Allanté is at least two, and not more than five, model years old and has not been driven more than 60,000 miles. Ask your dealer for details.



Your 1989 Allanté is completely covered through 1995.

1989 ALLANTÉ SELECTED STANDARD FEATURES; AVAILABLE FEATURE

■ INDICATES NEW STANDARD FEATURES

STANDARD FEATURES

COMFORT AND CONVENIENCE

- Express-down electrically powered windows, driver and passenger
- Electrically powered door locks with central door unlocking from doors and luggage compartment
- Recaro leather seating areas with French seams and ten-way power adjusters. Driver's seat includes three memory settings
- Electronic climate control
- Fully carpeted and lined luggage compartment—opens into passenger compartment through pass-through door; total capacity, 16.25 cubic feet
- Luggage compartment lid remote power release and power pull-down
- Cruise control
- Twilight sentinel
- Illuminated entry system
- Illuminated visor vanity mirrors—driver and passenger
- Leather-trimmed tilt-and-telescope steering wheel
- Leather-trimmed console—includes armrest, ash receiver, cigaret lighter, storage compartment with coin holder, release buttons for fuel filler door and luggage compartment, shift selector
- Leather-trimmed door armrests
- Leather-trimmed two-way adjustable headrests
- Power luggage compartment lid release and pull-down
- Body computer module
- Clock, digital display, in driver information center
- Computer diagnostics, on-board
- Digital instrument cluster (all-analog cluster available at no extra charge)
- Driver information center
- Electric rear window defogger in both convertible top and hardtop
- Electrically powered and heated outside rearview mirrors (collapsible)
- Front side window defoggers
- Fuel filler door with remote power release
- Garage door opener transmitter retainer in windshield header
- High-performance controlled-cycle windshield wiper system with wet-arm design washer
- Lamps, exterior—including fog, low- and high-beam composite headlamps with unique lamp-out substitution
- Lamps, interior—including foot well, stowage pass-through, overhead courtesy/map, door-mounted warning/courtesy, underhood, luggage compartment
- Padded dual sun visors
- Shoulder belts with comfort release feature

APPEARANCE AND PROTECTION

- Cadillac Roadside Service
- PASS Key (Personal Automotive Security System)
- Carpeted reversible machine-washable floor mats—with improved retention device
- Cadillac's 7-year/100,000-mile limited warranty. Plus, 7-year/100,000-mile rust-through warranty. See your dealer for terms and conditions of these limited warranties
- Accent molding
- Body-color taillamps (silver with red or gray exterior)
- Body panels—100% galvanized steel on both sides
- Center high-mounted stop lamp
- Clearcoat finish for a deep, rich luster
- One-piece wraparound bumper fascias, front and rear
- Power headlamp washers with independent control
- Specific Allanté ornamentation
- Theft-deterrent system
- Theft-deterrent VIN tags
- Tiffany floor carpet

MUSIC SYSTEMS

Delco/Bose Symphony Sound System: AM/FM stereo radio with auto-reverse cassette tape player; custom-equalized for Allanté interior

Rear-mounted power antenna

ENGINE/CHASSIS

- 4.5 liter, 200-horsepower, high-output V8 engine with sequential-port fuel injection
- Oil-life indicator
- Speed Dependent Damping; independent four-wheel suspension
- Variable-assist power rack and pinion steering
- Bosch III anti-lock braking system
- Unique F-7 four-speed automatic transmission with overdrive and viscous converter clutch
- Front-wheel drive
- Automatic parking brake release, multi-stroke apply
- Alternator, 120-amp
- Body-frame integral construction
- Delco Freedom® III heavy-duty battery
- Low brake fluid warning indicator
- Low engine coolant level monitor
- Low engine oil level monitor
- Low fuel warning indicator
- Low-restriction exhaust system—tuned for free flow and pleasing sound
- Low windshield washer fluid indicator
- Luggage compartment mat
- Multiplexed wiring
- Spare tire, T125/70D16 compact high-pressure type, laydown
- Spare tire cover



A cellular mobile telephone by Motorola is Allanté's only extra-cost option.

WHEEL TREATMENT



New 16" x 7" forged aluminum performance wheels with Goodyear Eagle V-rated P225/55VR16 tires are exclusive to Allanté.

ALLANTÉ'S ONLY EXTRA-COST OPTION

Cellular mobile telephone by Motorola

AVAILABLE FEATURES AT NO EXTRA COST

- Analog instrumentation
- Front license plate mounting provisions

ALLANTÉ STANDARD ROOF TREATMENTS: HARDTOP, SOFT-TOP AND CONVERTIBLE.



The aluminum hardtop weighs only 58 lbs. and fastens quickly into place without tools. Includes heated rear window and glass quarter windows.



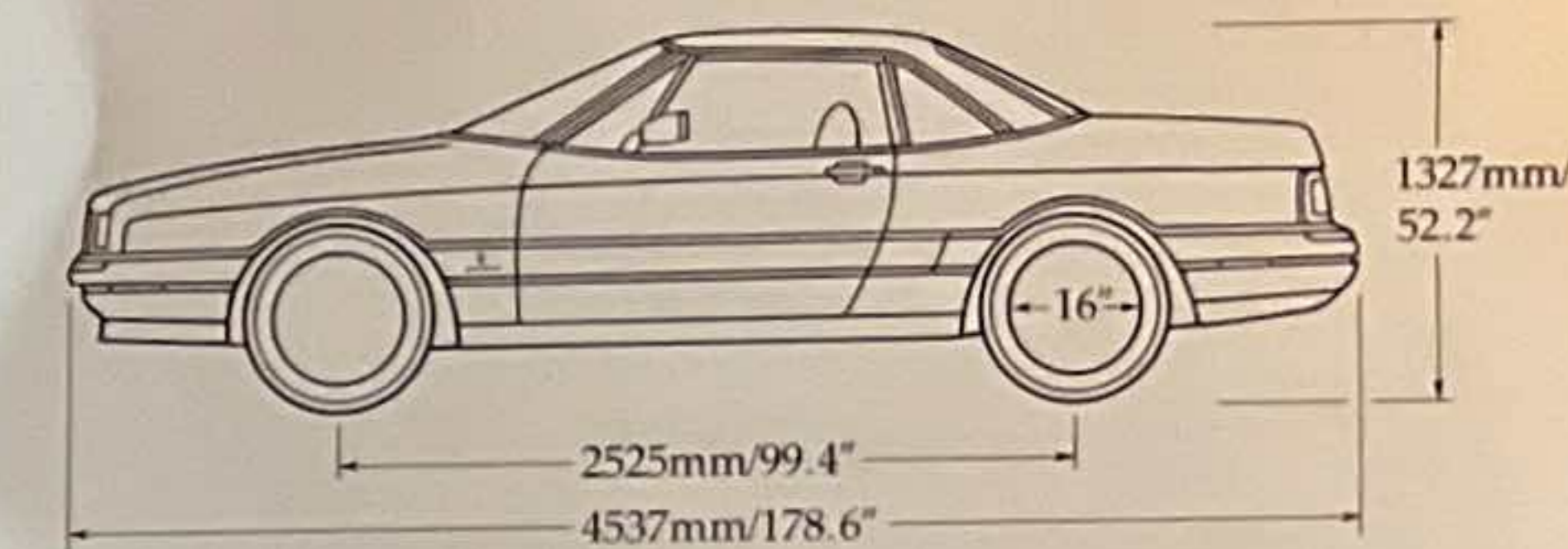
Allanté's exclusive soft-top design features an electrically heated glass rear window and glass quarter windows. The only convertible roadster available with both in the world.



The open-car aerodynamics of Allanté turn the wind into a whisper, allowing you to have a normal conversation at highway speeds with the top down.

ALLANTÉ COLOR INFORMATION

Exterior	Interior	Accent molding
Silver Metallic	Charcoal Saddle Maroon	Bright Red
Burgundy Metallic	Charcoal Saddle Maroon	Silver
Red	Charcoal Saddle Maroon	Silver
Black	Charcoal Saddle Maroon	Bright Red
Light Blue Metallic	Charcoal	Bright Red
Pearl White	Charcoal Saddle Maroon	Dark Red
Gray Metallic	Charcoal Maroon	Dark Red



SPECIFICATIONS

1989 ALLANTÉ

ENGINE	4.5 liter SFI (sequential-port fuel injection) V8
Horsepower	200 @ 4400 rpm
Torque	270 lbs.-ft. @ 3200 rpm
Fuel tank capacity	82.9L/22.0 gallons usable
Transmission	Unique F7 four-speed automatic with electronic torque management, overdrive and viscous converter clutch
Final drive ratio	3.21:1 effective
Suspension	Fully independent with electronic Speed Dependent Damping, struts with dual-path mounts and deflected-disc valving, coil springs and stabilizer bars
Brakes	Bosch III anti-lock power four-wheel disc
Steering	Variable Assist Steering with 15.6:1 ratio
Wheels and tires	
Wheels	Forged aluminum alloy, 16"x7"
Tires	P225/55VR16 Goodyear Eagle V-rated, low rolling resistance, low-profile steel-belted blackwall radials
Additional dimensions	
Body width	1866mm/73.5"
Tread width	Front 1533mm/60.4" Rear 1533mm/60.4"
Turning diameter (curb-to-curb)	11.7M/38.5'
Curb weight	1583.8 kg/3491.6 lbs.
Seating capacity	2
Headroom	944mm/37.2"
Legroom	1097mm/43.2"
Hip room	1383mm/54.4"
Shoulder room	1466mm/57.7"
Luggage capacity	.38 cu. m/13.25 cu. ft. (including passenger compartment "pass-through"; .46 cu. m/16.25 cu. ft.)

Specifications as of 8-88



■ Allanté's PASS Key (Personal Automotive Security System) utilizes a resistance-coded ignition key which must match on-board security electronics to start the engine.

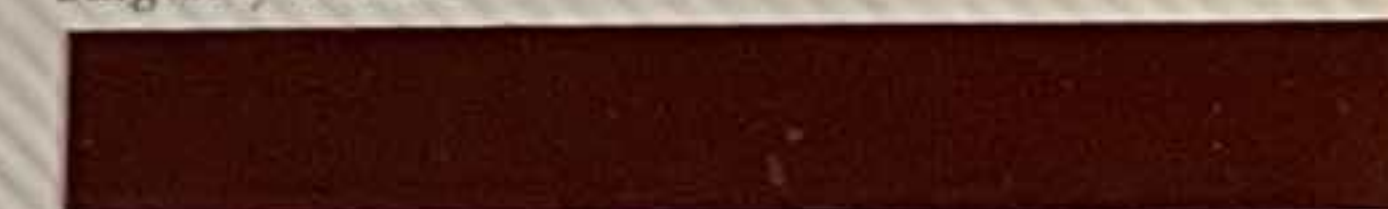


Exterior Clearcoat Colors

Silver Metallic



Burgundy Metallic



Red



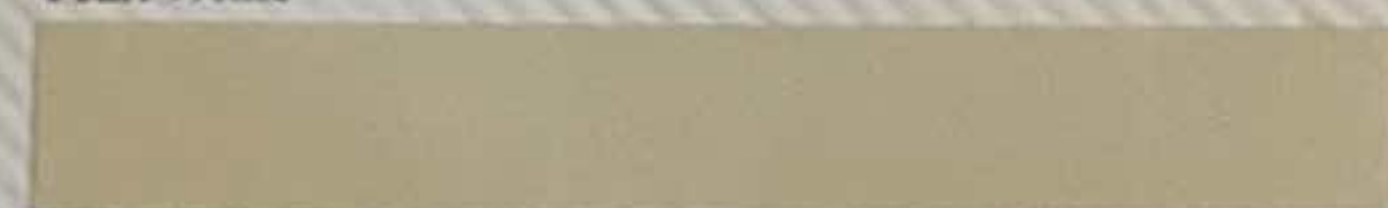
Black



Light Blue Metallic



Pearl White



Gray Metallic



SAFETY FEATURES

OCCUPANT PROTECTION

- Manual lap/shoulder safety belts for driver and passenger; driver side includes visual and audible warning system
- Energy-absorbing steering column
- Energy-absorbing instrument panel
- Laminated safety windshield glass
- Safety interlocking door latch
- Side-guard door beam
- Passenger-guard inside door lock handles
- Safety armrests
- Head restraints, driver and passenger (adjustable)
- Tempered safety glass, side and all rear windows
- Pressure-lock radiator cap
- Dual sun visors

ACCIDENT AVOIDANCE

- Side marker lights and reflectors
- Parking lamps that illuminate with headlamps
- Four-way hazard warning flasher
- Back-up lights
- Center high-mounted stop lamp
- Directional signal control with lane-change feature
- Windshield defroster, washer and controlled-cycle wipers
- Inside rearview mirror
- Outside left and right rearview mirrors
- Brake system with dual master cylinder and warning light
- Starter safety switch

- Dual-action hood latch
- Low-glare finish on inside windshield moldings, wiper arms and blades
- Illuminated heater and defroster controls
- Illuminated windshield wiper and washer controls
- Tires with built-in tread wear indicators
- Safety road wheel rims
- Audible brake lining wear indicators, disc brakes
- Self-adjusting feature, brakes
- Pressure relief fuel system

THEFT DETERRENCE

- PASS Key (Personal Automotive Security System)
- Audible reminder for ignition key removal
- Theft-deterrent steering column lock
- Visible vehicle identification number
- Remote inside hood release
- Theft-deterrent key system (separate ignition key)

IMPORTANT: A WORD ABOUT THIS CATALOG

We have tried to make this catalog as comprehensive and factual as possible. We reserve the right, however, to make changes at any time, without notice, in prices, colors, materials, equipment, specifications, models and availability. Since some information may have been updated since the time of printing, please check with your Cadillac dealer for complete details.

A WORD ABOUT ENGINES

Cadillacs are equipped with engines produced by different operating units of GM, its subsidiaries or suppliers to GM worldwide.

A WORD ABOUT ASSEMBLY

Cadillacs are assembled by different operating units of General Motors and Pininfarina. Cadillacs incorporate thousands of components produced by different operating units of GM and Pininfarina. We sometimes find it necessary to produce Cadillacs with different or differently sourced components than originally scheduled. All such components have been approved for use in Cadillacs and will provide the quality performance associated with the Cadillac name. Since some options may be unavailable when your vehicle is assembled, we suggest that you verify that your vehicle includes the equipment you ordered or, if there are changes, that they are acceptable to you.

A WORD ABOUT UPDATED SERVICE INFORMATION

Cadillac regularly sends its dealers useful service bulletins about Cadillac products. Cadillac monitors product performance in the field. We then prepare bulletins for servicing our products better. Now you can get these bulletins, too. Ask your dealer. To get ordering information, call toll-free [1-800-551-4123](tel:1-800-551-4123).

FINANCING OR LEASING, IT'S AS EASY AS GMAC

Financing is done right in the showroom. Terms are tailored to suit your personal needs. You can choose your monthly payment date. And be sure to ask about the Allanté Ultra-SmartLease Program.

Let's Get It Together...Buckle Up.

