

Cadillac



2015 XTS





# XTS

A TESTAMENT TO  
EXCEPTIONAL LUXURY.

The 2015 XTS is a tribute to enticing comfort, spacious design, performance with a tenacious purpose and intuitive technology. It exudes the indulgent feeling of a limousine – so much so, you almost expect it to include a chauffeur. Then again – why let a chauffeur have all the fun?



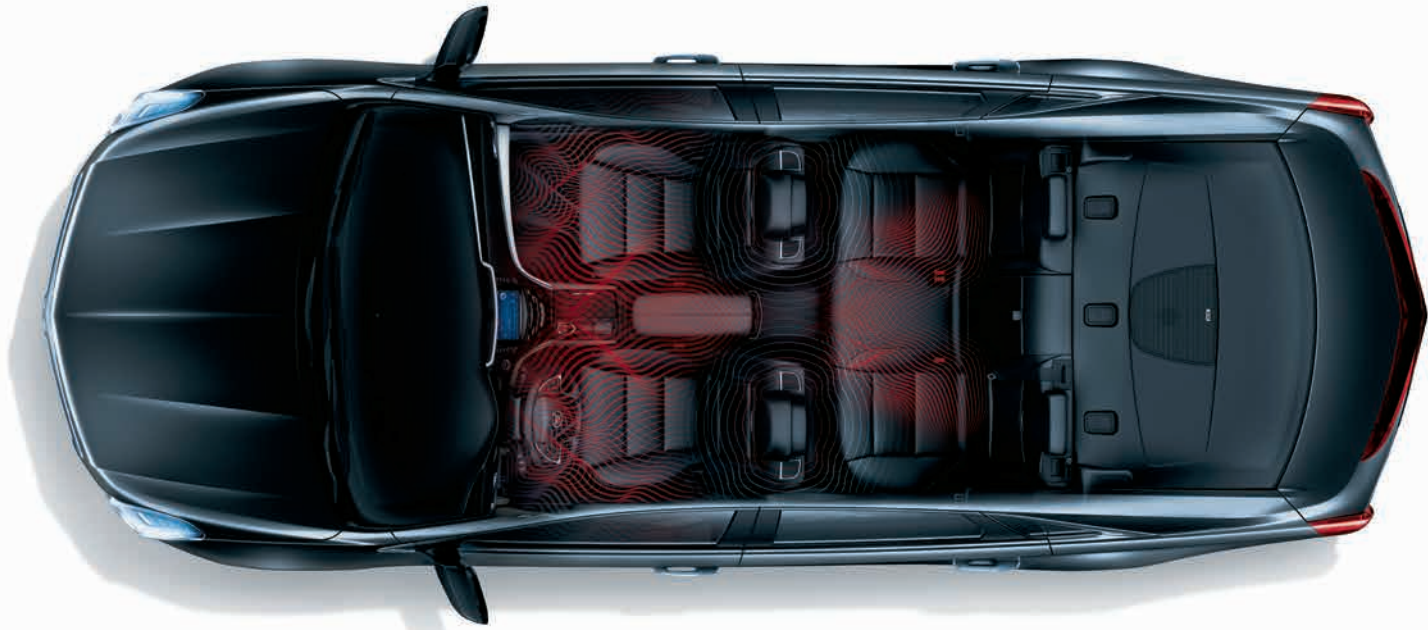
XTS Premium Collection / Kona Brown with Jet Black Accents

THE CROWNING  
ACHIEVEMENT.



Reigning supreme, the **SPACIOUS INTERIOR** of the XTS is a marvel. The **LUXURIOUS LEATHER** seating surfaces are ultrasoft to the touch and boast a refined appearance that is complemented by beautifully grained woods and finely brushed metals. Rear passengers enjoy 1016 mm of legroom, while the available **ULTRA VIEW® SUNROOF**, which stretches over both rows of seats, further enhances the roomy feel. The **STORAGE SPACES** are intelligent, to say the least – from the smartly designed mobile device holders and compartment behind the climate controls to the deceptively spacious trunk.

AN AUDITORY  
EXPERIENCE.



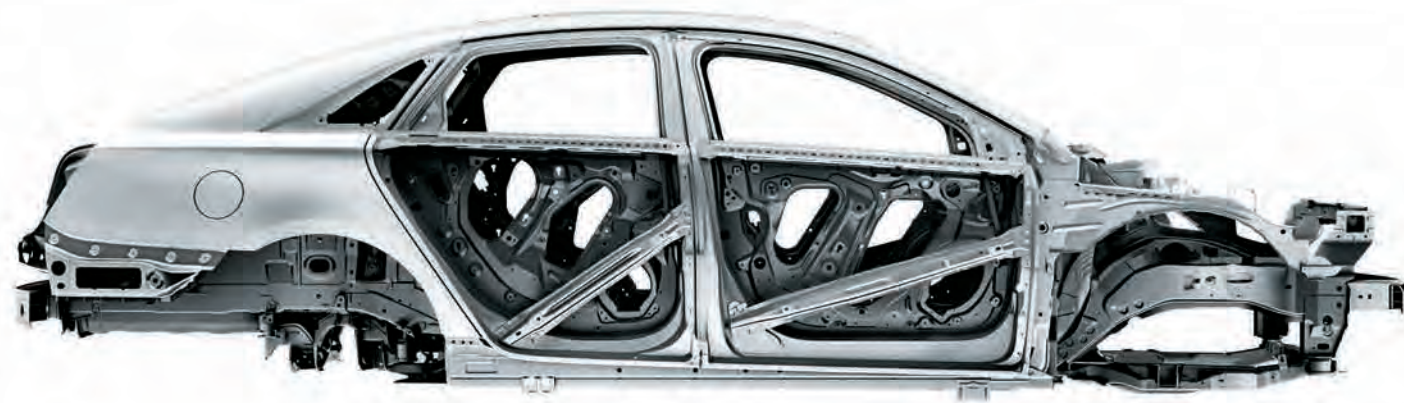
Customized for the unique acoustic environment of the XTS, the **14-SPEAKER BOSE® Studio Surround®** sound system in the Premium and Platinum Collections washes over you in sonic waves. The system uses two **PERSONAL® SURROUND SPEAKERS** placed on the top of each front seat to provide an immersive and individual experience, while proprietary speakers and a powerful amplifier enhance the rich, detailed sound. **AUDIOPILOT® NOISE COMPENSATION TECHNOLOGY** continuously adjusts the music to compensate for background noise and vehicle speed.

CONVENIENCE, CONTROL,  
CONNECTIVITY.



These are the three principles guiding the technology present in the XTS. **CUE®<sup>1</sup>** brings today's intuitive technology to your fingertips – all with the simple swipe of your hand or sound of your voice. Available **ONSTAR 4G LTE<sup>2</sup>** with Wi-Fi® provides a fast, reliable connection. Passengers can connect up to seven mobile devices<sup>3</sup> allowing them to browse the web, update their status and even stream videos right from the vehicle. Also available on select models is the **RECONFIGURABLE GAUGE CLUSTER**, a customizable feature that allows you to arrange your gauges to display the information you desire the most.

1. CUE functionality varies by model. Full functionality requires compatible Bluetooth® and smartphone, and USB connectivity for some devices. Visit CUE.Cadillac.ca for more details. 2. Visit onstar.ca for coverage maps, details and system limitations. Services and connectivity may vary by model and conditions. OnStar with 4G LTE connectivity is available on select vehicle models and in select markets. Customers will be able to access OnStar services only if they accept the OnStar User Terms and Privacy Statement (including software terms). OnStar acts as a link to existing emergency service providers. After the trial period (if applicable), an active OnStar service plan is required. 3. Devices must be WPA2-compliant with active OnStar service and data plan. Wi-Fi devices manufactured prior to 2006 may not be compatible. Please consult your device manufacturer for information regarding the WPA2 security protocol and Wi-Fi device compatibility. Vehicle must be started or in accessory mode to access Wi-Fi. Visit onstar.ca for system details and limitations.



The **SAFETY CAGE** on the XTS is constructed with high-strength steel alloys and strategically placed crumple zones and incorporates 10 standard airbags<sup>1</sup>. **PREVENTIVE SAFETY FEATURES** include Electronic Brake Force Distribution, which helps stopping power between the front and rear brakes stay balanced, and the **STABILITRAK**<sup>®</sup> Electronic Stability Control System. Additionally, the Auto-Dry brakes position the brake pads closer to the rotors to sweep away moisture, keeping the brakes drier and helping to provide optimal braking performance.

1. Always use safety belts and the correct restraint for your child's age and size. Even in vehicles equipped with the Passenger Sensing System, children are safer when properly secured in a rear seat in the appropriate infant, child or booster seat. Never place a rear-facing infant restraint in the front seat of any vehicle equipped with a passenger airbag. See the Owner's Manual and child safety seat instructions for more safety information.

Available on the XTS Luxury Collection and included on the Premium and Platinum Collections is the **DRIVER AWARENESS PACKAGE**. It contains such features as **FORWARD COLLISION ALERT**, which uses a camera to detect and warn you when an impact may be imminent, and **LANE KEEP ASSIST** (FWD models only), which subtly engages the Electric Power Steering to help keep your XTS within the lane if an unintended lane change is detected. Other features included in the Driver Awareness Package are **REAR CROSS TRAFFIC ALERT**, which uses sensors to sweep the left and right sides of your XTS when you're backing out of parking spots, alerting you to approaching vehicles, and **SIDE BLIND ZONE ALERT**, which provides a seat vibration and visual alert in your side mirrors if vehicles are in your blind spot. The **DRIVER ASSIST PACKAGE**, available on the Premium and included in the Platinum Collections, features **ADAPTIVE CRUISE CONTROL**, which uses forward-looking radar and camera technology to naturally maintain a driver-selected following distance from the vehicle ahead, even in stop-and-go traffic. **FRONT AND REAR AUTOMATIC BRAKING** detects when a frontal or rear collision is imminent and automatically applies the brakes to lessen impact severity, helping the driver avoid certain low speed impacts altogether.



Safety features are no substitute for the driver's responsibility to operate the vehicle in a safe manner. The driver should remain attentive to traffic, surroundings and road conditions at all times.

An available patented Safety Alert Seat sends pulses through the seat cushion on the left or right side or simultaneously, alerting you to a variety of potential hazards as well as the direction they're coming from.



THE EXQUISITE  
SHAPE OF LUXURY.

With a chiseled body and a striking grille, the exterior of the XTS is the embodiment of elegance, modeled with meticulous details to attract the rare connoisseurs who appreciate them.

BRILLIANT  
ILLUMINATION.



Approaching the XTS with the key fob in your pocket or purse sets off a beautifully **CHOREOGRAPHED LIGHTING** system designed to enhance visibility at night. Elements in the headlamps and outside mirrors, along with available illuminating accents on the door handles, acknowledge your presence and emit a soft glow to brighten the area around the vehicle. The High-Intensity Discharge (HID) headlamps are available with **INTELLIBEAM™ TECHNOLOGY**, which automatically switches between low and high beams when either tail lamps or oncoming headlamps are sensed. In addition, the available **ADAPTIVE FORWARD LIGHTING** system allows you to keep your eyes on the curve by peering around corners as you turn the steering wheel.



## A SMOOTH OPERATOR.

Fitted with advanced suspension technology and a 304-hp 3.6L direct-injected V6, the XTS is a powerful yet smooth drive. Dual-mode **MAGNETIC RIDE CONTROL™ SUSPENSION** assesses the road up to 1,000 times per second, adjusting to provide responsive handling.



The HiPer Strut technology helps the tires grip the surface, delivering a comfortable ride. Additionally, the engine is coupled to an automatic transmission that provides crisp, clean shifts. Upgrade to either of the XTS **VSPORT MODELS**, and you'll get an exhilarating 410-hp 3.6L Twin Turbo direct-injected V6 with 369 lb.-ft. of torque that is complemented by 20" wheels, an exclusive sleek grille and unique rear Vsport badging.

## THE IDEAL COMPLEMENT.

Cast-aluminum. Chrome inserts. The wheels on the XTS proceed smoothly from artful design to stunning practicality.



**19" CAST-ALUMINUM WITH POLISHED FINISH**  
PREMIUM COLLECTION;  
INCLUDES P245/45R19 ALL-SEASON TIRES<sup>1</sup>



**19" CAST-ALUMINUM WITH PREMIUM MULTI-COAT PAINTED FINISH AND CHROME INSERTS**  
STANDARD;  
INCLUDES P245/45R19 ALL-SEASON TIRES<sup>1</sup>



**20" CAST-ALUMINUM WITH POLISHED FINISH AND CHROME INSERTS**  
PLATINUM COLLECTION AND VSPORT PLATINUM;  
INCLUDES P245/40R20 ALL-SEASON TIRES<sup>1</sup>



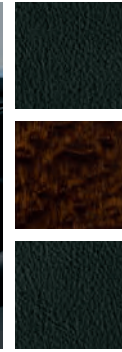
**20" CAST-ALUMINUM WITH PREMIUM MULTI-COAT PAINTED FINISH**  
PREMIUM COLLECTION OPTION  
(INCLUDED ON VSPORT PREMIUM);  
INCLUDES P245/40R20 ALL-SEASON TIRES<sup>1</sup>



**19" CAST-ALUMINUM WITH STERLING SILVER PREMIUM PAINTED FINISH**  
LUXURY COLLECTION;  
INCLUDES P245/45R19 ALL-SEASON TIRES<sup>1</sup>

1. All-season tires may not satisfy winter tire requirements in all regions of the country. Tires specifically designed for severe winter conditions and marked with the "winter tire" symbol may be required during certain months or in certain regions. Contact your Provincial, Municipal or local road authority for information regarding which tires are required in your particular area.

# INTERIOR THEMES



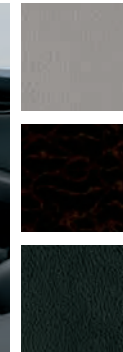
Jet Black Leather Seating Surfaces<sup>1</sup>  
Nutella Sapele Wood Trim  
Jet Black Accents



Shale Leather Seating Surfaces<sup>4</sup>  
Nutella Sapele Wood Trim  
Cocoa Accents



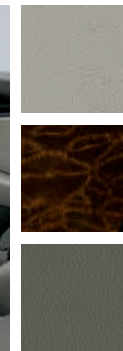
Kona Brown Full-Leather Seating<sup>2</sup>  
Natural Finish Wood Trim  
Jet Black Accents



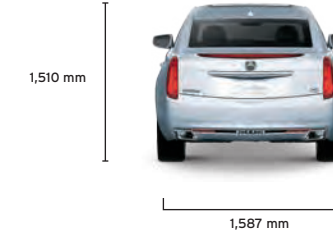
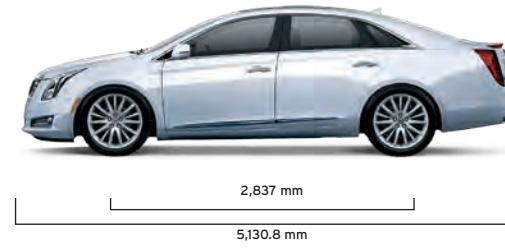
Medium Titanium Leather Seating Surfaces<sup>5</sup>  
Raven Sapele Wood Trim  
Jet Black Accents



Jet Black Semi-Aniline Full Leather Seating<sup>3</sup>  
Lineate Wood Trim  
Light Wheat Accents



Light Platinum Semi-Aniline Full Leather Seating<sup>6</sup>  
Nutella Sapele Wood Trim with Lineate Wood Inlay  
Dark Urban/Cocoa Accents



XTS DIMENSIONS (mm)	FRONT	REAR
Headroom	990.60	960.12
Hip room	1,399.54	1,379.22
Legroom	1,069.34	1,016.00
Shoulder room	1,470.66	1,431.00

CAPACITIES	
Cargo volume	509.80 litres
Seating	5
Fuel, FWD (litres, approx.)	70.41
Fuel, AWD (litres, approx.)	73.82

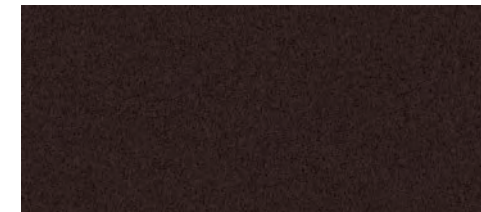
## PAINT FINISHES

### TINTCOAT

A premium two-layer paint application with the addition of a tinted clearcoat, lending the finish an extra depth and brightness.

### TRICOAT

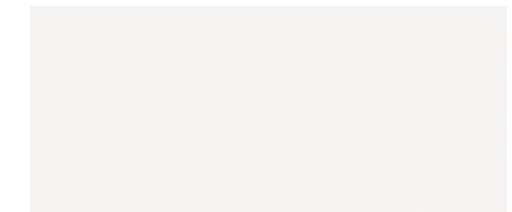
A meticulous three-layer process that results in a dramatic hue-shifting colour.



Cocoa Bronze Metallic<sup>1,2</sup>



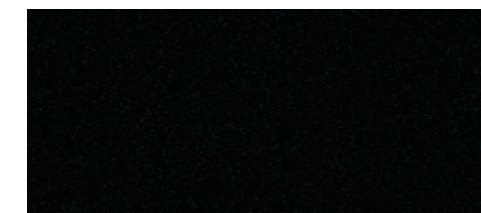
Black Raven



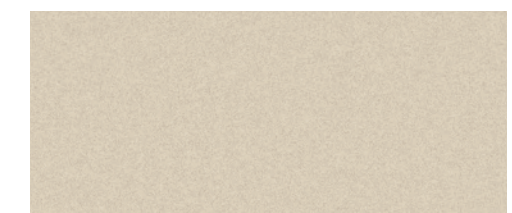
White Diamond Tricoat<sup>1</sup>



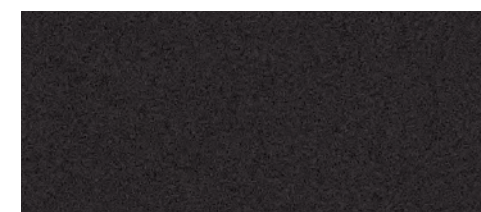
Radiant Silver Metallic



Black Diamond Tricoat<sup>1</sup>



Silver Coast Metallic<sup>3</sup>



Graphite Metallic



Dark Adriatic Blue Metallic<sup>1,2</sup>



Crystal Red Tintcoat<sup>1</sup>

1. Jet Black available on XTS, XTS Luxury, XTS Premium and Vsport Premium models. 2. Kona Brown with Jet Black accents available at extra cost on XTS Luxury, XTS Premium and Vsport Premium models. 3. Jet Black with Light Wheat accents available on XTS Platinum and Vsport Platinum models. 4. Shale with Cocoa accents available on XTS, XTS Luxury, XTS Premium and Vsport Premium models. 5. Medium Titanium with Jet Black accents available on XTS Luxury, XTS Premium and Vsport Premium models. 6. Light Platinum with Dark Urban/Cocoa accents available on Platinum and Vsport Platinum models.

1. Available at extra cost. 2. Late availability. 3. Not available with Medium Titanium/Jet Black interior.



## OWNER PRIVILEGES

We have created the most comprehensive suite of owner privileges offered by any luxury automotive brand in the world, providing everything our Cadillac owners need and everything they deserve.



### PREMIUM CARE MAINTENANCE

The Cadillac Premium Care Maintenance program covers routine oil changes, tire rotations, certain air filter replacements and a thorough multipoint vehicle inspection for 4 years or 80,000 kilometres!



### WARRANTY PROTECTION

The Cadillac 6-year or 110,000-kilometre<sup>1</sup> Powertrain Component Limited Warranty offers more years and kilometres standard than BMW, Mercedes-Benz and Audi. In addition, our 4-year or 80,000-kilometre<sup>1</sup> New Vehicle Limited Warranty covers most repairs on your vehicle, including parts and labour, to correct any concerns in materials or workmanship.



### COURTESY TRANSPORTATION

This program provides alternative transportation and/or reimbursement of certain transportation expenses if your Cadillac requires warranty repairs for 6 years or 110,000 kilometres!



### COURTESY TRANSPORTATION

Cadillac offers more years of standard Roadside Assistance than any leading luxury automaker, with services for 6 years or 110,000 kilometres<sup>1</sup> – the same years and kilometres you'll enjoy with our Powertrain Component Limited Warranty. This 24/7 program provides lock-out, towing and refuelling services and more.



The OnStar<sup>®2</sup> Directions & Connections Plan allows you to push one button to find the things and places you need. Get directions or a diagnostics check while you drive. Make calls with both hands on the wheel, and control your vehicle with the OnStar RemoteLink<sup>®</sup> mobile app<sup>3</sup> And, as always, get help immediately in a crash or an emergency. XTS comes standard with one year of the OnStar Directions & Connections Plan.



### EMERGENCY BY ONSTAR

With Automatic Crash Response<sup>4</sup> in a crash, built-in sensors can automatically alert a specially trained OnStar Advisor who is immediately connected into your Cadillac to see if you need help sent to your exact location. Other OnStar emergency services include Injury Severity Prediction and First Assist, which ensure you quickly get the help you need when seconds matter most.



### SECURITY BY ONSTAR

If you've reported your Cadillac stolen, OnStar can use GPS technology to help authorities quickly locate and recover it. An OnStar Advisor can further assist authorities by sending a remote signal to activate Stolen Vehicle Slowdown<sup>5</sup>, which can gradually slow the vehicle to a stop to aid in its recovery. Advisors can also enable a Remote Ignition Block<sup>5</sup>, making it impossible to restart a stolen vehicle once it has been turned off.



### NAVIGATION BY ONSTAR

Just push the blue OnStar button, and an Advisor can download turn-by-turn directions<sup>6</sup> to your Cadillac. A voice will then call out every turn, or the directions will be sent to your navigation system, if equipped.



### CONNECTIONS BY ONSTAR

Available OnStar Hands-Free Calling<sup>7</sup> allows you to make and receive calls safely from your Cadillac. With the OnStar RemoteLink mobile app, you can access real-time information and control your vehicle from anywhere you have cellphone service. With a few simple steps, you can find a destination using the RemoteLink app and send directions right to your vehicle.

Available OnStar 4G LTE<sup>8</sup> with Wi-Fi<sup>®</sup> can help you stay better connected to the world around you. The content and connections you crave throughout your day have moved inside your Cadillac with a hotspot capable of supporting up to seven compatible mobile devices<sup>9</sup> at once, along with a reliable 4G LTE connection – making it an easy way to access data on the go. You'll also see an enhancement to current OnStar services, including shorter response times and faster service delivery. This is the most powerful OnStar ever, empowering you and your passengers to create a highly connected world inside your car.



### DIAGNOSTICS BY ONSTAR

With the most comprehensive vehicle diagnostics<sup>2</sup> from OnStar, maintaining your Cadillac can be as simple as checking your email or your OnStar RemoteLink mobile app. Every month, you can receive an email with the status of key operating systems, or push your blue OnStar button for a real-time diagnostics check on demand.<sup>2</sup>



### MYCADILLAC APP<sup>10</sup>



The ingenuity of the XTS doesn't stop with the vehicle. As a Cadillac owner, an advanced app is available for your new car. From virtually anywhere at any time, a few taps of your finger on your iPhone<sup>®</sup> or Android<sup>™</sup> smartphone let you access features such as parking reminders, Roadside Assistance and more. Plus, in conjunction with the OnStar RemoteLink app, you'll have the ability to remotely start your vehicle (when factory-equipped with remote start) and lock and unlock your doors from any place you have cell service. In addition, you can access key diagnostic information, including fuel tank level and range and remaining oil life.

1. Whichever comes first; fully transferable. 2. Visit onstar.ca for details and system limitations. OnStar acts as a link to existing emergency service providers. Services vary by model and conditions. After the complimentary period, an active OnStar service plan is required. 3. Available on select iOS, Android, BlackBerry and Windows devices. Requires an active OnStar service plan. Services vary by device, vehicle, conditions and the type of service plan you have. Please visit onstar.ca/mobile for vehicle availability, system limitations and further details. 4. OnStar acts as a link to existing emergency service providers. Not all vehicles can transmit all crash data. 5. Service varies by model and conditions. Visit onstar.ca for details and system limitations. Stolen Vehicle Slowdown and Remote Ignition Block are available on select 2009 and newer GM vehicles. 6. Requires ABS and Directions & Connections Plan. Visit onstar.ca for coverage map. Services vary by model. 7. OnStar Hands-Free Calling requires an existing OnStar service plan and prepaid minutes. Not available in certain markets. Calls may be made to the U.S. and Canada only. 8. Visit onstar.ca for coverage maps, details and system limitations. Services and connectivity may vary by model and conditions. OnStar with 4G LTE connectivity is available on select vehicle models and in select markets. Customers will be able to access OnStar services only if they accept the OnStar User Terms and Privacy Statement (including software terms). OnStar acts as a link to existing emergency service providers. After the trial period (if applicable), an active OnStar service plan is required. 9. Devices must be WPA2-compliant with active OnStar service and data plan. Wi-Fi devices manufactured prior to 2006 may not be compatible. Please consult your device manufacturer for information regarding the WPA2 security protocol and Wi-Fi device compatibility. Vehicle must be started or in accessory mode to access Wi-Fi. Visit onstar.ca for system details and limitations. 10. Requires iPhone or Android mobile device. 11. Subject to eligibility. 12. Conditions and limitations apply. 13. Program subject to change.

### ACQUISITION OPTIONS

In addition to the many exclusive privileges of Cadillac ownership, General Motors of Canada has created a range of supplementary support programs to enhance your ownership experience. Some of these programs assist you in purchasing the Cadillac of your choice. Others help protect you and your new Cadillac over the long term.

### PURCHASING OR LEASING

- **GM Student Bonus Program** – Students or recent graduates of high school, college or university<sup>11</sup> may be entitled to receive a Student Bonus Vehicle Redemption Allowance of \$500 or \$750<sup>12</sup> (tax inclusive; purchased vehicle dependent) to use toward the purchase, lease or finance of one eligible new Cadillac vehicle.
- **Purchase Financing or Leasing** – On-the-spot financing at your GM dealership!<sup>13</sup>
- **The GM Card** – GM cardholders may redeem up to \$3,500 GM Card<sup>®</sup> Earnings (subject to Vehicle Redemption Allowances) toward the Total Purchase Price on eligible new GM vehicles.<sup>14</sup> For full program details, please visit [thegmcard.ca](http://thegmcard.ca).

### ADDITIONAL OWNERSHIP PROGRAMS

- **Cadillac Owner Centre** – As an owner, take advantage of the Cadillac Owner Centre. The online owner's destination gives you access to contests, current offers and the latest driving and maintenance tips. Find out more at [cadillacowner.ca](http://cadillacowner.ca).
- **GM Protection Plan (GMPP)** – The only extended service plan backed by the resources and commitment of General Motors. GMPP may be purchased at the time of sale or subsequently during the New Vehicle Limited Warranty period.<sup>12</sup>

### INFORMATION RESOURCES

- You can obtain more information about Cadillac vehicles and programs from your Cadillac dealer, or at these information centres:
- The Cadillac website at [cadillac.ca](http://cadillac.ca).
  - The Cadillac Contact Centre at 1-888-446-2000 (1-800-263-3830 for TDD users).

### A WORD ABOUT THIS BROCHURE

Some of the equipment shown or described throughout this brochure may be available at extra cost. We have tried to make this brochure comprehensive and factual. We reserve the right, however, to make changes at any time, without notice, in prices, colours, materials, equipment, specifications, models and availability. Specifications, dimensions, measurements, ratings and other numbers in this brochure and other printed materials provided at the dealership or affixed to vehicles are approximates based upon design and engineering drawings and prototypes and laboratory tests. Your vehicle may differ due to variations in manufacture and equipment. Since some information may have been adapted since the time of printing, please check with your Cadillac dealer for complete details. General Motors of Canada Limited reserves the right to lengthen or shorten the model year for a product, for any reason, or to start and end model years at different times.

### A WORD ABOUT ASSEMBLY

Cadillac vehicles are equipped with engines and components produced and assembled by different operating units of General Motors, its subsidiaries and suppliers, and these engines and components may change or be obtained from different sources from time to time. All such engines and components are approved for use in Cadillac vehicles. Certain equipment ordered may be unavailable at the time of assembly, and we suggest that you verify that your vehicle includes the equipment you ordered, or if there are changes, that they are acceptable to you.

### A WORD ABOUT CORROSION

Cadillacs are designed and built to resist corrosion. All body sheet-metal components are warranted against rust-through corrosion for 6 years. There is no deductible for rust-through repairs. Application of additional rust-inhibiting materials is not required under the corrosion coverage and none is recommended.

### TRADEMARKS

The marks appearing in the Cadillac brochure including, but not limited to, General Motors, GM, Cadillac, the Cadillac Crest, and respective logos, emblems, slogans and vehicle model names and body designs; and other marks such as Cadillac User Experience, IntelliBeam and StabiliTrak are trademarks of General Motors and/or General Motors of Canada Limited, its subsidiaries, affiliates or licensors. OnStar, the OnStar emblem and OnStar RemoteLink are registered trademarks of OnStar, LLC. Bose is a registered trademark of the Bose Corporation. App Store is a service mark of Apple, Inc. Apple and iPhone are registered trademarks of Apple, Inc., registered in the U.S. and other countries. Android is a trademark of Google Inc. BlackBerry is a registered trademark of Research In Motion, Limited. Windows is a registered trademark of Microsoft, Inc. Bluetooth is a registered trademark of Bluetooth SIG Inc. Google Play is a trademark of Google Inc. SiriusXM, the SiriusXM logo, channel names and logos are trademarks of SiriusXM Radio Inc. Wi-Fi is a registered trademark of Wi-Fi Alliance.<sup>®</sup> Brembo is a registered trademark of Brembo S.p.A.

© 2014 General Motors of Canada Limited. All Rights Reserved. All text, images, graphics and other materials in the Cadillac brochure are subject to the copyright and other intellectual property rights of General Motors and/or General Motors of Canada Limited. These materials may not be reproduced, distributed or modified without the express written permission of General Motors and/or General Motors of Canada Limited. Printed in Canada. December 2014.

# XTS FEATURES AND OPTIONS

	STANDARD	LUXURY	PREMIUM	PLATINUM	VSPORT PREMIUM	VSPORT PLATINUM
<b>DRIVETRAIN</b>						
<b>3.6L DIRECT-INJECTED V6 VVT ENGINE</b> With 304 hp @ 6800 rpm and 264 lb.-ft. of torque @ 5200 rpm	Std	Std	Std	Std		
<b>3.6L TWIN TURBO DIRECT-INJECTED V6 VVT ENGINE</b> With 410 hp @ 6000 rpm and 369 lb.-ft. of torque @ 1900 rpm					Std	Std
<b>FRONT-WHEEL DRIVE</b>	Std	Std	Std	Std		
<b>ALL-WHEEL DRIVE, ADVANCED WITH TORQUE VECTORING</b> Includes electronic limited-slip differential (eLSD)		Opt	Opt	Opt	Std	Std
<b>6-SPEED AUTOMATIC TRANSMISSION</b> Includes steering wheel-mounted paddle shifting	Std	Std	Std	Std	Std	Std
<b>ENGINE BLOCK HEATER</b>	Std	Std	Std	Std	Std	Std
<b>CHASSIS AND SUSPENSION</b>						
<b>BRAKES</b>						
Brembo® front, 4-wheel vented disc with anti-lock braking system (ABS) and Duralife™ rotors; featuring Auto-Dry and Intelligent Brake Assist	Std	Std	Std	Std	Std	Std
Premium-finish calipers				Std		Std
<b>EXHAUST</b>						
Dual stainless steel, hidden, turn-down	Std					
Integrated outlet design		Std	Std	Std	Std	Std
<b>MAGNETIC RIDE CONTROL™</b> Dual-mode, featuring Tour and Sport modes	Std	Std	Std	Std	Std	Std
<b>STABILITRAK® ELECTRONIC STABILITY CONTROL SYSTEM</b>	Std	Std	Std	Std	Std	Std
<b>STEERING</b>						
Speed-sensitive, variable-effort power rack-and-pinion	Std	Std	Std	Std	Std	Std
Electric (requires FWD)	Std	Std	Std	Std		
<b>SUSPENSION, 4-WHEEL INDEPENDENT</b>						
Front: HiPer Strut, direct-acting stabilizer bar; rear: independent linked H-arm with air springs	Std	Std	Std	Std	Std	Std
<b>EXTERIOR FEATURES</b>						
<b>CAPLESS FUELING</b>						
<b>KEYLESS ACCESS</b> Passive entry on both front and rear doors	Std	Std	Std	Std	Std	Std
<b>LIGHTING</b>						
High-Intensity Discharge (HID) headlamps, Twilight Sentinel® automatic operation, flash-to-pass and cornering lamps	Std	Std	Std	Std	Std	Std
IntelliBeam™			Std	Std	Std	Std
Adaptive Forward Lighting			Std	Std	Std	Std
Daytime running lamps (DRL)	Std	Std	Std	Std	Std	Std
Auxiliary daytime running lamps, on lower fascia		Std	Std	Std	Std	Std
LED tail lamps, centre high-mounted stop lamp (CHMSL)	Std	Std	Std	Std	Std	Std
Illuminated door handles		Std	Std	Std	Std	Std
Puddle lamps	Std	Std	Std	Std	Std	Std
<b>MIRRORS</b>						
Driver and passenger, heated, power-adjustable, manual-folding, turn signal indicator	Std					
Driver and passenger, heated, power-adjustable, driver-side auto-dimming, power-folding, turn signal indicator		Std	Std	Std	Std	Std
<b>TIRE, COMPACT SPARE</b>	Opt	Opt	Opt	Opt	Opt	Opt
<b>TIRE INFLATION KIT</b>	Std	Std	Std	Std	Std	Std
<b>WHEELS</b>						
19" cast-aluminum with premium multi-coat painted finish and chrome inserts	Std					
19" cast-aluminum with painted Sterling Silver premium finish		Std				
19" cast-aluminum with polished finish			Std			
20" cast-aluminum with premium multi-coat painted finish			Opt		Std	
20" cast-aluminum with polished finish and chrome inserts				Std		Std
<b>WINDSHIELD WIPERS, AUTOMATIC RAINSENSE™</b> With moisture detection		Std	Std	Std	Std	Std
<b>INTERIOR FEATURES</b>						
<b>ADAPTIVE REMOTE START</b> Activates heated/ventilated seats (if equipped), climate control system and rear defogger	Std	Std	Std	Std	Std	Std
<b>AIR FILTRATION SYSTEM</b> Automatic air circulation/air quality	Std	Std	Std	Std	Std	Std
<b>ARMREST</b>						
Centre front	Std	Std	Std	Std	Std	Std
Rear with lockable pass-through, dual cupholders and storage	Std	Std	Std	Std	Std	Std
Rear with audio controls				Std		Std
Rear with rear sunshade control				Std		Std
<b>AUDIO</b>						
8-speaker Bose® sound system	Std	Std				
14-speaker Bose Studio Surround® sound system			Std	Std	Std	Std
SiriusXM™ with three-month trial <sup>1</sup>	Std	Std	Std	Std	Std	Std
<b>CADILLAC USER EXPERIENCE® (CUE)²</b> Information and media control system	Std	Std	Std	Std	Std	Std
<b>CARGO NET</b>		Std	Std	Std	Std	Std
<b>CLIMATE CONTROL</b>						
Electronic, automatic with individual climate settings	Std	Std	Std	Std	Std	Std
Dual-zone for driver and front passenger	Std	Std				
Tri-zone for driver, front passenger and rear seating areas			Std	Std	Std	Std
Rear-window defogger	Std	Std	Std	Std	Std	Std
<b>CONNECTIVITY</b>						
110-volt power outlet			Std	Std	Std	Std
3 USB <sup>3</sup> ports	Std	Std	Std	Std	Std	Std
Auxiliary audio input jack	Std	Std	Std	Std	Std	Std
Bluetooth® recognizes up to 10 Bluetooth-enabled smartphones	Std	Std	Std	Std	Std	Std
SD card slot	Std	Std	Std	Std	Std	Std
Wi-Fi® hotspot capability <sup>4</sup> including a three-month or three-gigabyte-data trial, whichever comes first	Std	Std	Std	Std	Std	Std
<b>CONSOLE, FRONT CENTRE</b> With shifter, storage bins, storage tray, dual hidden cupholders	Std	Std	Std	Std	Std	Std
<b>CRUISE CONTROL</b> Electronic, with set and resume speed	Std	Std	Std	Std	Std	Std
<b>DOOR LOCKS</b> Power-programmable, with lock-out protection	Std	Std	Std	Std	Std	Std
<b>ELECTRONIC PARKING BRAKE</b>	Std	Std	Std	Std	Std	Std
<b>ENTERTAINMENT SYSTEM, REAR SEAT</b> Dual DVD players with wireless headphones and remote control			Opt	Opt	Opt	Opt

	STANDARD	LUXURY	PREMIUM	PLATINUM	VSPORT PREMIUM	VSPORT PLATINUM
<b>INTERIOR FEATURES (continued)</b>						
<b>FLOOR MATS</b>						
Carpeted front and rear	Std	Std	Std	Std	Std	Std
Premium				Std		Std
<b>GAUGE CLUSTER</b>						
With full-colour Driver Information Centre display	Std	Std	Std	Std	Std	Std
Reconfigurable, with four themes: Balanced, Enhanced, Performance or Simple			Std	Std	Std	Std
<b>GLOVEBOX</b> Electronic push-button opening	Std	Std	Std	Std	Std	Std
<b>HEADLINER</b> Microfibre sueded, including sail panels and pillars				Std		Std
<b>LEATHER-WRAPPED INSTRUMENT PANEL, DOOR TRIM UPPER AND FLOOR CONSOLE</b>						
				Std		Std
<b>LIGHTING</b>						
Illuminated entry and courtesy	Std	Std	Std	Std	Std	Std
Ambient interior, LED-based instrument panel and front door light pipes; accent spotlights		Std	Std	Std	Std	Std
<b>MEMORY PACKAGE</b> Two presets for driver and front-passenger seat position, outside mirrors, power rake and telescoping wheel		Std	Std	Std	Std	Std
<b>MIRROR</b> Frameless, automatic-dimming rear-view	Std	Std	Std	Std	Std	Std
<b>NAVIGATION<sup>5</sup></b> With voice and text guidance		Std	Std	Std	Std	Std
<b>POWER OUTLET</b> 110-volt, located on rear of front centre console			Std	Std	Std	Std
<b>PUSH-BUTTON START</b> Includes two remote transmitters	Std	Std	Std	Std	Std	Std
<b>RETAINED ACCESSORY POWER</b> Power windows, audio system, mirrors, Ultra View® sunroof (if equipped) and climate control remain operational after ignition is switched off for 10 minutes or until a door is opened	Std	Std	Std	Std	Std	Std
<b>SEATING</b>						
5-passenger; front bucket	Std	Std	Std	Std	Std	Std
Leather seating surfaces	Std	Std	Std	Std	Std	Std
Semi-aniline full leather seats				Std		Std
8-way power driver and front-passenger seat adjusters, 4-way manual head restraint adjust, 4-way power lumbar control	Std	Std	Std	Std	Std	Std
22-way power driver and front-seat adjusters, massaging feature (late availability)				Opt	Opt	Opt
Thigh adjuster, driver and front-passenger			Std	Std	Std	Std
Heated and ventilated front seats	Std	Std	Std	Std	Std	Std
Heated rear outboard seats		Std	Std	Std	Std	Std
Rear 60/40 split-folding, with rear pass-through, lockable	Std	Std	Std	Std	Std	Std
<b>SHIFT LEVER</b>						
Leather-wrapped	Std					
Leather-wrapped with wood-accented knob		Std	Std	Std	Std	Std
<b>STEERING COLUMN</b> Power-rake wheel, telescoping	Std	Std	Std	Std	Std	Std
<b>STEERING WHEEL</b>						
Heated		Std	Std	Std	Std	Std
Leather-trimmed with wood accents; includes fingertip controls for CUE, audio, Bluetooth for phone interface and cruise control	Std	Std	Std	Std	Std	Std
<b>SUNSHADE</b>						
Power, rear window				Opt	Std	Opt
Manual on each rear side-door window				Opt	Std	Opt
<b>TIRE PRESSURE MONITORING SYSTEM</b>						
	Std	Std	Std	Std	Std	Std
<b>ULTRA VIEW® SUNROOF</b> Power, tilt-sliding, electric with express-open/-close over front-row seating, and power sunshade		Opt	Opt	Std	Opt	Std
<b>UNIVERSAL HOME REMOTE, 3-CHANNEL</b>	Std	Std	Std	Std	Std	Std
<b>VISORS</b> Driver and front-passenger illuminated vanity mirrors	Std	Std	Std	Std	Std	Std
<b>WINDOWS</b> Power, with express-up/-down; includes rear passenger lock-out	Std	Std	Std	Std	Std	Std
<b>WOOD TRIM</b>						
Includes real wood on steering wheel, console and centre stack	Std	Std	Std	Std	Std	Std
On instrument panel and door trim		Std	Std	Std	Std	Std
<b>SAFETY AND SECURITY</b>						
<b>AIRBAGS<sup>6</sup></b> Dual-stage frontal, side-impact; knee and head-curtain side-impact for driver and front-passenger; head-curtain and seat side-impact for outboard rear passengers						
	Std	Std	Std	Std	Std	Std
Passenger Sensing System, front-passenger seat	Std	Std	Std	Std	Std	Std
<b>DRIVER ASSIST PACKAGE</b> Adaptive Cruise Control <sup>7</sup> and Automatic Front and Rear Braking			Opt	Std	Opt	Std
<b>DRIVER AWARENESS PACKAGE</b> Lane Departure Warning, Lane Keep Assist (requires FWD), Side Blind Zone Alert (SBZA) <sup>8</sup>		Opt	Std	Std	Std	Std
Rear Cross Traffic Alert, Forward Collision Alert and Safety Alert Seat						
<b>HEAD-UP DISPLAY</b> Full-colour, reconfigurable			Std	Std	Std	Std
<b>ONSTAR 4G LTE<sup>9</sup></b> Standard one-year Directions & Connections Plan	Std	Std	Std	Std	Std	Std
<b>PARK ASSIST</b>						
Rear	Std	Std	Std	Std	Std	Std
Front and Rear		Std	Std	Std	Std	Std
Automatic parallel and perpendicular assist (FWD only)		Std	Std	Std		
<b>REAR VISION CAMERA</b> Includes rear-view camera with automatic operation that provides a panoramic rear view with "guidelines" indicating the vehicle's projected path when vehicle is put in Reverse		Std	Std	Std	Std	Std
<b>SAFETY BELTS</b> Lap and shoulder belts for all positions with belt-to-seat mounting and pretensioners for driver and front passenger, rear outboard comfort guides	Std	Std	Std	Std	Std	Std
<b>THEFT-DETERRENT SYSTEM</b>						
Engine immobilizer	Std	Std	Std	Std	Std	Std
Audible content theft-deterrent system	Std	Std	Std	Std	Std	Std
<b>TRACTION CONTROL</b> All-speed with brake and engine intervention	Std	Std	Std	Std	Std	Std

1. Available in 10 Canadian provinces, 3 territories and the 48 contiguous United States. Basic monthly subscription required and sold separately after trial period. All fees and programming are subject to change. Subscription subject to customer agreement at [siriusxm.ca/terms](http://siriusxm.ca/terms). 2. CUE functionality varies by model. Full functionality requires compatible Bluetooth and smartphone, and USB connectivity for some devices. Visit [CUE.Cadillac.ca](http://CUE.Cadillac.ca) for more details. 3. Not compatible with all devices. 4. Devices must be WPA2-compliant with active OnStar service and data plan. Wi-Fi devices manufactured prior to 2006 may not be compatible. Please consult your device manufacturer for information regarding the WPA2 security protocol and Wi-Fi device compatibility. Vehicle must be started or in accessory mode to access Wi-Fi. Visit [onstar.ca](http://onstar.ca) for system details and limitations. 5. At time of printing, detailed map coverage is available for most major urban areas of the United States and for certain metropolitan areas of Canada (Vancouver, Calgary, Edmonton, Winnipeg, Windsor, London, Toronto, Ottawa, Montreal, Quebec City and Halifax). Coverage is significantly limited outside these areas. 6. Always use safety belts and the correct restraint for your child's age and size. Even in vehicles equipped with the Passenger Sensing System, children are safer when properly secured in a rear seat in the appropriate infant, child or booster seat. Never place a rear-facing infant restraint in the front seat of any vehicle equipped with a passenger airbag. See the Owner's Manual and child safety seat instructions for more safety information. 7. Adaptive Cruise Control is no substitute for the driver's personal responsibility to operate the vehicle in a safe manner. The driver needs to remain attentive to traffic and road conditions and provide the steering, braking or other inputs necessary to retain control of the vehicle. The Front Automatic Braking feature may help reduce crash damage under certain conditions discussed in the Owner's Manual. Never rely on this feature to brake the vehicle. 8. Before making a lane change, always check the Side Blind Zone Alert display, check the exterior and interior rear-view mirrors, look over your shoulder for vehicles and hazards, and start the turn signal. 9. Visit [onstar.ca](http://onstar.ca) for coverage maps, details and system limitations. Services and connectivity may vary by model and conditions. OnStar with 4G LTE connectivity is available on select vehicle models and in select markets. Customers will be able to access OnStar services only if they accept the OnStar User Terms and Privacy Statement (including software terms). OnStar acts as a link to existing emergency service providers. After the trial period (if applicable), an active OnStar service plan is required.



[cadillac.ca](http://cadillac.ca)