

2013

CADILLAC SRX



FOLLOW NO ONE.

In a world of lookalike crossovers, the captivating SRX stands deliberately, daringly apart. Visually, SRX is a uniquely joyful expression of Cadillac's industry-leading design philosophy. Its direct-injection 3.6L V6 – the most powerful standard engine in any luxury crossover* – is muscular yet efficient, while its available torque-vectoring Haldex All-Wheel-Drive system seamlessly and brilliantly masters changing road conditions. SRX is also designed to open up new worlds of possibility with its versatile, reconfigurable cabin. And it comes with the reassurance of an overall five-star safety rating.** Bold, potent, refined and ingenious, the SRX is a crossover that steadfastly refuses to follow.

* Based on the latest competitive information available at the time of printing.

** 2012 model year tested. U.S. Government 5-Star Safety Ratings are part of the National Highway Traffic Safety Administration's (NHTSA's) New Car Assessment Program (safercar.gov).

At Left: SRX, shown in Black Raven with available features.



IT'S ART, OPTIMIZED FOR THE ROAD.

When it comes to style, Cadillac's SRX is simply beyond comparison. The profile is fresh and contemporary and the lines and intersections, crisp. The stance is powerful, with large-diameter alloy wheels pushed out towards the corners of the vehicle for greater stability and a smoother ride. Bold details, like those glittering, oversize headlights, reward closer scrutiny. And, perhaps best of all, while its looks are unmistakably modern, SRX honours its proud Cadillac heritage with a variety of subtle styling touches, including the suggestion of tailfins in the tail light design. The result is nothing less than automotive sculpture.

1 SRX's tail lights come alive with advanced LED technology, giving an unmistakable Cadillac presence. LEDs react more quickly and use less energy than traditional bulbs while providing enhanced illumination.

2 The available UltraView sunroof is a perfect example of the kind of thoughtful design featured throughout SRX. Spanning both the front and rear seats, it gives the cabin an even more spacious feel. When the sun gets more intense, a convenient power sunshade blocks the glare and helps keep things cool.

3 Signature vertical light pipes frame SRX's available High-Intensity Discharge (HID) headlights, which include headlight washers and Adaptive Forward Lighting. This feature employs sensors to determine the car's speed and steering, then precisely swivels the headlights to illuminate your path.

4 The memory height adjuster for the power liftgate allows you to program a liftgate height of your choosing. Besides opening to its full height, it can also be set for a lower opening to avoid contact with a garage ceiling. Operation requires just the touch of a button.

Opposite page: SRX, shown in Grey Flannel Metallic with available features.





7^b
Elevators



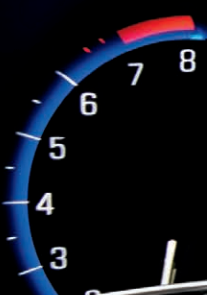


IN THE BIG PICTURE, IT'S THE LITTLE THINGS THAT MATTER MOST.

In the SRX interior, premium details make all the difference. Step inside, and your eye is drawn immediately toward the precise cut-and-sewn accents and such premium available touches as supple leather seating surfaces and deeply grained Sapele wood accents. SRX's focus on quality is also apparent in the things you can't see, like new Bose® Active Noise Cancellation technology, which works to eliminate unwanted sounds. Triple door seals, a laminated windshield and front-side window glass further contribute to SRX's quiet ride. Along with all of this luxury and technology, the SRX also offers ingenious practicality. With the rear seats folded, there is a massive 1730 litres (61.1 cu. ft.) of usable cargo space, which is more than you'll find in competitors like the 2013 Audi Q5, Infiniti EX and Mercedes GLK350.* There's more storage in the front and rear doors and in the backs of the front seats, and standard side rails on the roof make it a simple matter to mount a variety of racks and cargo boxes. SRX even provides you with the unexpected luxury of an air-conditioned glove compartment.

* Based on the latest competitive information available at the time of printing.

- 1 Cooling air is gently circulated throughout the front seatbacks and cushions. It's a welcome rejuvenation on hot days and during extended journeys.
- 2 With dual DVD players integrated into the front seat head restraints, this available entertainment system lets rear passengers watch movies, hook up portable gaming consoles and more. The system is Blu-ray™ compatible and includes two sets of headphones and remote control.
- 3 Your rear passengers have full control of the temperature of their riding environment, thanks to climate controls conveniently positioned at the rear of the centre console.
- 4 Because everyone has their own idea of comfort, SRX offers 3 distinct climate zones. The driver, front passenger and rear passengers all enjoy their own settings. The system also automatically adjusts humidity for optimal air quality.



Speed 31 The Coffee House Ben Taylor (iXM) Oil Life 87



AIRBAG



THE CUTTING EDGE OF TECHNOLOGY, NOW SHARPER THAN EVER.

The ingenious Cadillac User Experience – CUE for short – revolutionizes mobile infotainment. Standard on every 2013 SRX, CUE blends smartphone technology with highly intelligent design to create an experience that's as effortless and intuitive as it is advanced. Simple and unobtrusive, its stunning 203 mm (8 in.) LCD touch screen becomes active with a wave of your hand. There's full Bluetooth® integration* that allows pairing of up to ten devices, plus multiple USB ports** for connecting your non-Bluetooth® devices. When an icon is touched, the screen pulses to acknowledge the command, letting you keep your attention focused on the road ahead. CUE also offers intelligent predictive text that provides an added shortcut for typing locations, contacts and songs. With CUE, the customization and content possibilities are not only endless, but right at your fingertips.

* Full functionality requires compatible Bluetooth® and smartphone. Some devices require USB connectivity.

** Not compatible with all devices.



IT NEVER BLINKS.

With a host of advanced newly available safety innovations that incorporate radar technology, driving SRX is like having a second set of eyes. Available Forward Collision Alert, Lane Departure Warning, Side Blind Zone Alert,* Rear Cross-Traffic Alert, and Front and Rear Park Assist help alert you to potential hazards you might not otherwise be aware of. SRX also offers available Adaptive Cruise Control,** which uses radar to maintain a preset distance between you and the vehicle in front. With so many visual and auditory signals vying for your attention, we invented a warning you can feel – the available, patented Safety Alert Seat. As an alternative to warning chimes, it subtly pulses to alert you of select dangers.

* Before making a lane change, always check the Side Blind Zone Alert display, check the exterior and interior rearview mirrors, look over your shoulder for vehicles and hazards and activate your turn signal.

** Adaptive Cruise Control is no substitute for the driver's personal responsibility to operate the vehicle in a safe manner. The driver needs to remain attentive to traffic and road conditions and provide the steering, braking or other inputs as necessary to retain control of the vehicle.

† Based on WardsAuto.com 2012 Middle Luxury Cross/Utility Vehicle segment and latest competitive information available at time of printing.



1 Offering the latest innovation in driver awareness, available Lane Departure Warning issues both visual and audible warnings if the vehicle begins to drift out of its intended lane without the driver first activating the turn signal.



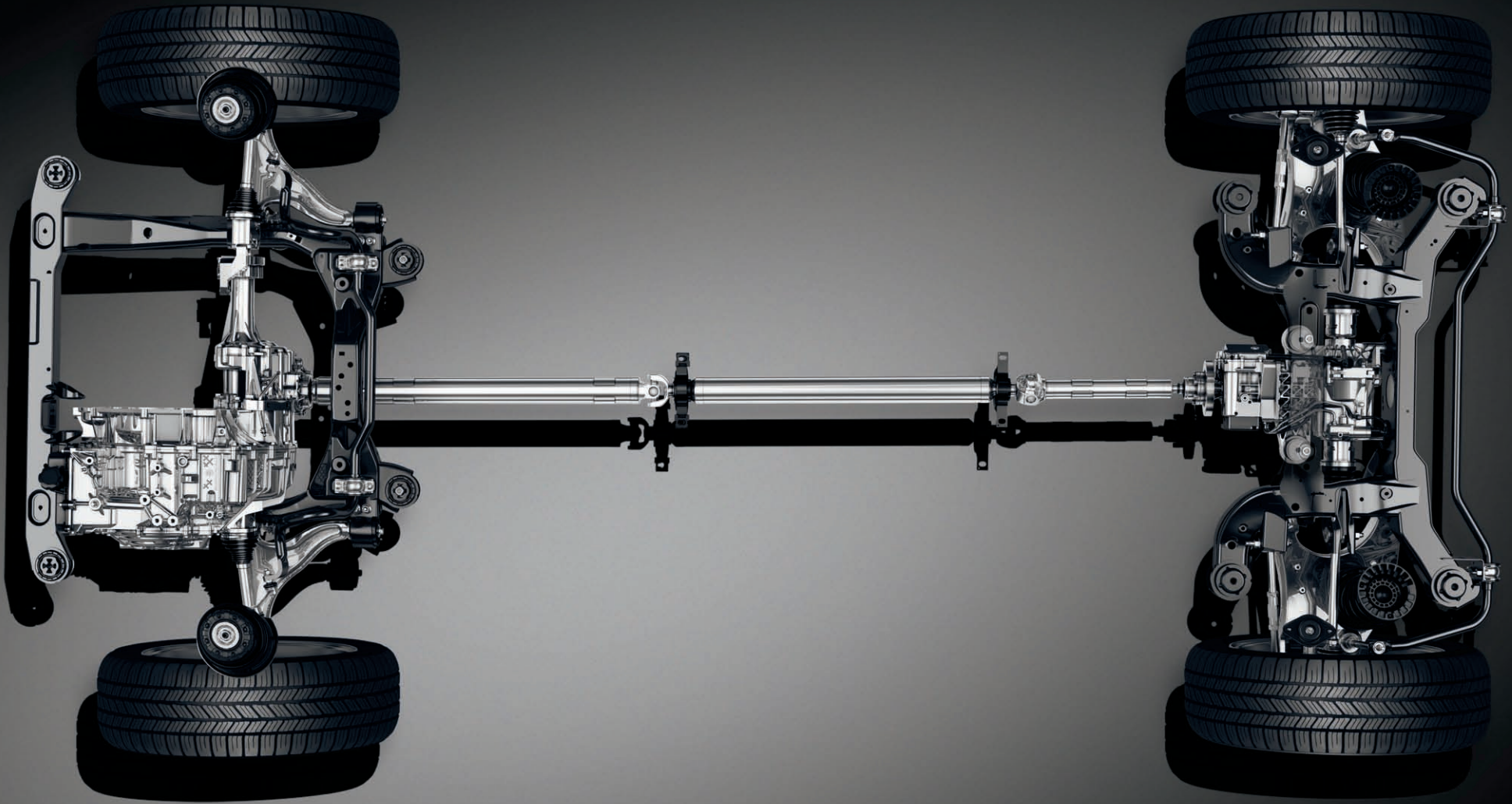
2 New and exclusive to SRX in its class,† the available Safety Alert Seat sends subtle pulses through the seat cushion, left or right or simultaneously, alerting you to a variety of potential hazards on the road.



3 Available Side Blind Zone Alert* uses radar-based technology to monitor for vehicles beside your SRX. If your turn signal is activated and a vehicle enters one of your blind spots, an alert warns you of its presence.

At Right: SRX, shown in Grey Flannel Metallic with available features.





ENGINEERING THAT ADAPTS TO THE UNEXPECTED.

SRX instills unwavering driving confidence, thanks to its precisely tuned suspension that delivers both comfort and control. Complementing this advanced suspension is available torque-vectoring Haldex All-Wheel Drive (AWD), which monitors both road conditions and your driving input to direct power where it's most effective. The AWD system and rear electronic Limited Slip Differential (eLSD) work in tandem to provide enhanced control while cornering. SRX also offers the agile responsiveness of an available Continuously Variable Real-Time Damping suspension. It seamlessly adjusts to road conditions, reading the road and adjusting damping forces every two milliseconds. Combined with AWD, the result is a refined ride, confident cornering and enhanced acceleration, whether it's snowing and minus six or twenty-seven and sunny.



1 The electronically controlled six-speed automatic transmission incorporates Driver Shift Control that allows clutchless manual shifting. A quick tap is all that's required for a smooth, crisp upshift or downshift.



2 Wet brakes mean longer stopping distances. SRX's standard Auto-Dry Brakes activate after rain is detected to help improve braking performance.



GIVE IT AN OPPORTUNITY TO DEMONSTRATE ITS POWER AND IT WON'T HESITATE.

Effortless power, impeccably delivered – that's the 308-horsepower, direct-injection V6 engine in the SRX. Whether it's a soaring mountain pass, a busy highway on-ramp or the instant allure of a winding curve, you'll appreciate the 3.6 litres of superior motivation – the most powerful standard engine in any luxury crossover.* And, because torque is what matters most in day-to-day driving, you'll appreciate its exceptionally wide torque band every time you press the accelerator. Yet, despite its brawn, this sophisticated power plant is remarkably efficient and requires only regular fuel, so it's as responsible as it is exhilarating.

* Based on the latest competitive information available at the time of printing.



For outstanding real-world responsiveness, SRX's 3.6L V6 engine puts well over 200 lb.-ft. of torque at your disposal across almost its entire operating range.

At Right: SRX, shown in Grey Flannel Metallic with available features.

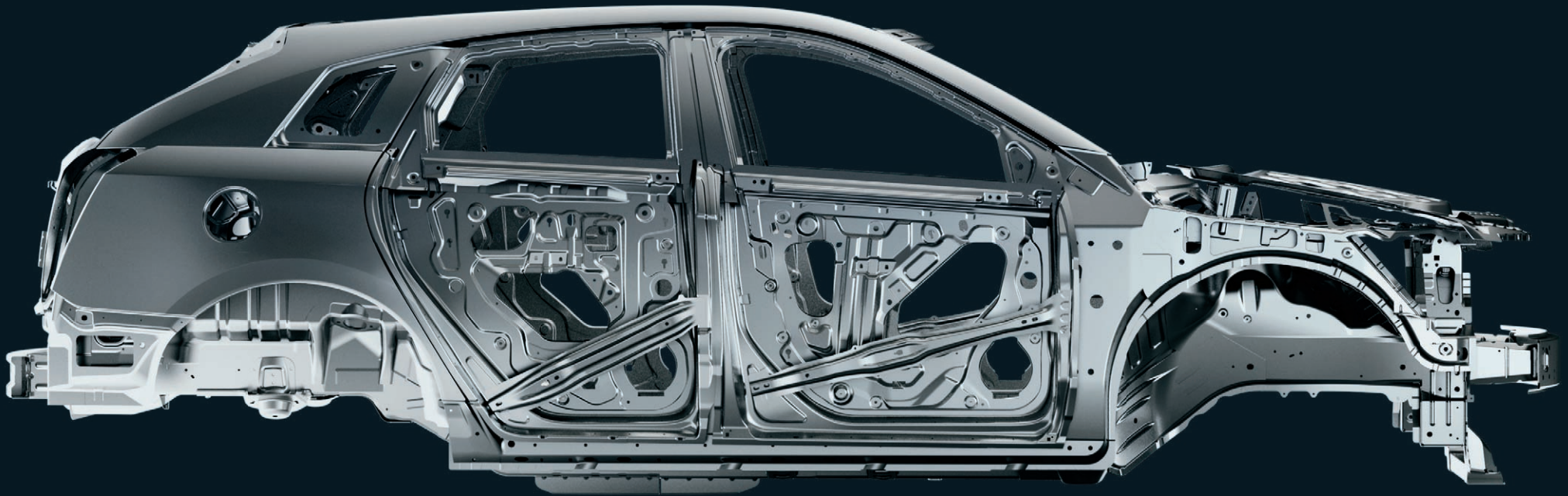


PROTECTIVE TO ITS CORE.

The SRX has been engineered with a network of protective features, like energy-absorbing crumple zones and a safety cage constructed with ultra-high-strength steel and other advanced materials to provide exceptional occupant protection. Of course, SRX is also equipped with an array of accident avoidance features, like the StabiliTrak® Electronic Stability Control System and full-function traction control, that help keep collisions from happening in the first place. The sophisticated all-disc

Anti-lock Braking System (ABS) incorporates Electronic Brake Force Distribution, which helps shorten braking distances by balancing stopping power between the front and rear brakes. There's also the confidence that comes with rollover mitigation sensors, front safety-belt pretensioners and load limiters, eight standard airbags and OnStar®* Automatic Crash Response. In a crash, your SRX can automatically alert an OnStar® Advisor who can send the emergency services you need.

* Visit onstar.ca for coverage map, details and system limitations. Services vary by model and conditions.
OnStar® acts as a link to existing emergency service providers.





CADILLAC SHIELD: THE NEW STANDARD OF LUXURY.

At Cadillac, we believe our owners deserve the very best. That's why when we set out to create the ultimate customer experience, designing and engineering great vehicles was just the beginning; we were also looking to create an experience comparable with those provided by the world's greatest luxury brands. Every vehicle we sell is backed by the Cadillac Shield, the most comprehensive suite of owner benefits offered by any luxury automotive brand in the world. From innovations like Remote Vehicle Diagnostics and advanced mobile apps to the extraordinary value of our no-charge Premium Care Maintenance Program, Cadillac Shield establishes a new standard of luxury ownership.



WARRANTY PROTECTION

Every Cadillac is covered by a 4-year/80,000 km Limited Warranty* which covers repairs on your entire vehicle, including parts and labour, to correct problems in materials and workmanship. A 6-year/110,000 km Powertrain Component Limited Warranty* is also included that covers select powertrain components.



PREMIUM CARE MAINTENANCE

Standard on every new Cadillac is the no-charge Cadillac Premium Care Maintenance Program, which covers select required maintenance services for the first 4 years or 80,000 km** of ownership.



The standard one-year Directions & Connections Plan allows you to push one button to connect with a live Advisor to find the things and places you want. Get directions or a diagnostics check while you drive. Make calls safely with both hands on the wheel and control your vehicle with the OnStar RemoteLink™ mobile app. And as always, get help immediately in a crash or an emergency. These are just a few examples of the level of personal service we think you deserve as a Cadillac owner.



SECURITY BY ONSTAR®

If you've reported your Cadillac stolen, OnStar®†† can use GPS technology to help authorities quickly locate and recover it. On most Cadillac models, an Advisor can send a Stolen Vehicle Slowdown® or Remote Ignition Block signal to help authorities safely recover it.



DIAGNOSTICS BY ONSTAR®

With best-in-class diagnostics from OnStar®,†† maintaining your Cadillac can be as simple as checking your email or your OnStar RemoteLink™ mobile app. Every month, you can receive an email with the status of key operating systems or push your OnStar® button for a real-time diagnostics check on demand.



ROADSIDE ASSISTANCE

Any time you require assistance during the 6-year/110,000 km Powertrain Component Limited Warranty period,* whether you are in Canada or the contiguous United States, Roadside Assistance is at your disposal 24 hours a day, 7 days a week, 365 days a year.



COURTESY TRANSPORTATION

Whenever your Cadillac requires scheduled maintenance or warranty repair service during the warranty period, your dealer will provide you with shuttle transportation for daily service or an alternate car (or reimbursement for rental or other transportation expenses) for overnight service.



NAVIGATION BY ONSTAR®

Just push the OnStar®†† button and an Advisor can download voice-guided turn-by-turn directions to your Cadillac, and a voice will call out every turn or send them to your navigation system, if so equipped.



CONNECTIONS BY ONSTAR®

Available Hands-Free Calling‡ capability from OnStar® allows you to make and receive calls safely from your Cadillac. With the OnStar RemoteLink™ mobile app, you can access real-time information and control your Cadillac from anywhere you have cell phone service. Now you can even find a destination with OnStar RemoteLink™ and send directions right to your vehicle.



EMERGENCY BY ONSTAR®

In most crashes, built-in sensors can automatically alert an OnStar®†† Advisor who is immediately connected into your Cadillac to see if you need help sent to your exact location. Other OnStar®†† emergency services include First Assist. All Cadillac models come with 1 year of OnStar® service standard.



MYCADILLAC APP

The ingenuity of the SRX doesn't stop with the vehicle. As a Cadillac owner, an advanced complimentary app is available for your new vehicle. From virtually anywhere at anytime, a few taps of your finger on your iPhone® or Android™ smartphone let you access features like parking reminders, the Owner's Manual, and more. Plus, in conjunction with the OnStar RemoteLink™ mobile app, you'll have the ability† to remotely start your vehicle (when factory equipped) from any place you have cell service, and lock and unlock your doors. As well, you can access key diagnostic information, including fuel tank level and range, and remaining oil life. In addition, you can select a destination and have directions sent right to your SRX.



* Whichever comes first, fully transferable. See dealer for limited warranty details. ** Whichever comes first, fully transferable. See dealer for select scheduled maintenance details. † Available on select iPhone®, Android™ and BlackBerry® (interim availability) devices. Services vary by phone, vehicle and conditions. Requires active OnStar® subscription. †† Visit onstar.ca for coverage map, details and system limitations. Services vary by model and conditions. OnStar® acts as a link to existing emergency service providers. ‡ Requires iPhone® or Android™ platform and active OnStar® subscription.

COLLECTIONS

To help you equip your new luxury crossover precisely the way that you want it, Cadillac offers the 2013 SRX in your choice of four Collections.

LEATHER COLLECTION

On the outside, the Leather Collection is distinguished by 7-spoke aluminum wheels with a bright machined finish. In the cabin, you and your front passenger both enjoy heated, power-adjustable seats with supple leather seating surfaces. There's also a memory function which stores 2 sets of preferences for the driver's seat position, exterior mirror positions and driver personalization features. Other features of the Leather Collection include an E-Z Key passive entry system, a universal home remote, an auto-dimming interior rear-view mirror and heated, power-adjustable, power-folding exterior mirrors with a driver-side auto-dimming function. The Leather Collection is available on both Front-Wheel Drive and All-Wheel Drive models.



1 CUE, a comprehensive in-vehicle experience, merges intuitive design with auto-industry-first controls and commands for information and entertainment data. As intuitive as it is advanced, CUE connects you and your vehicle like never before.*

2 The steering wheel's elegant, multifunctional new design incorporates intuitive controls for the CUE system as well as switches for audio and cruise control.

3 Select surfaces you touch inside SRX are wrapped in soft leather and meticulously accented with French-stitched seams that add a handcrafted look.

LUXURY COLLECTION

Luxury is front and centre with this available collection. Adaptive Remote Start does more than just conveniently turn on your ignition from up to 60 m (200 ft.) away; it also activates interior climate controls so the cabin is at the perfect temperature. Once inside, you're greeted with soft leather that adds impeccable detail to the seating surfaces. Technology like a rear vision camera helps safely guide you when the vehicle is in reverse, while rainsense windshield wipers automatically vary wiper speed depending on rainfall. The Luxury Collection even includes an UltraView power glass sunroof that extends over both the front and second-row seats to provide a brighter riding environment for all passengers. The Luxury Collection is available exclusively with All-Wheel Drive.



1 The available UltraView sunroof is a perfect example of the kind of thoughtful design featured throughout the SRX, spanning both front and rear seats, giving the vehicle an even more spacious feel. When the sun gets more intense, a convenient power sunshade blocks the light and keeps things cool.

2 The Luxury Collection includes the rich, warm glow of genuine Sapele wood trim on the doors, centre console, shift knob and heated steering wheel.

3 To help you keep smaller loads of cargo safely in place, the Luxury Collection features a U-Rail Cargo Management System with an adjustable cargo fence firmly mounted to a U-Rail track embedded in the floor.

* Full functionality requires compatible Bluetooth® and smartphone. Some devices require USB connectivity.

PERFORMANCE COLLECTION

The available Performance Collection adds a subtle, sporting edge to the SRX's refined, yet exhilarating demeanour. At its heart is performance-oriented ZF Servotronic® speed-sensitive variable-effort steering, calibrated for a crisp, responsive feel. When bringing the vehicle around tight curves and corners, this electro-hydraulic steering system responds almost telepathically to each turn of the wheel. With 20" wheels and tires and a Nürburgring-tuned suspension system with continuously variable real-time shock damping, this SRX delivers a harmonious balance of ride comfort and confident handling. The Performance Collection is available exclusively with All-Wheel Drive.



1 With Adaptive Forward Lighting, sensors read your speed and steering angle, swivelling the High-Intensity Discharge (HID) headlights up to 15 degrees to improve illumination, especially around corners. Also aiding visibility are fog lights and headlight washers.

2 Make a stand-out vehicle stand out even more with the Performance Collection's bright machined aluminum 20" wheels. They're a stunning design that makes the ideal complement to your new SRX.

3 Stylish and practical front fog lights are an integral part of every Performance Collection. Xenon High-Intensity Discharge (HID) headlights with adaptive forward lighting are also included.

PREMIUM COLLECTION

The available Premium Collection was developed to elevate the technology and exceptional comfort of SRX to an even higher level. At the forefront is the intuitive brilliance of CUE and its 3D GPS Navigation System.** Heated and ventilated front bucket seats with leather seating surfaces, coupled with tri-zone automatic climate control, offer the ultimate in luxury. Plus, there's the peace of mind that comes with the Driver Awareness Package that features Forward Collision Alert, Lane Departure Warning and the Safety Alert Seat. Available exclusively with All-Wheel Drive, the Premium Collection offers an extraordinary blend of luxury, technology and convenience, all exquisitely packaged for your comfort.



1 Cooling air is gently circulated throughout the front seatbacks and cushions. It's a welcome rejuvenation on hot days and during extended journeys.

2 Because everyone has their own personal idea of comfort, the SRX offers three distinct climate zones. The driver, front passenger, and rear passengers enjoy their own climate controls. The system also senses humidity in the air and adjusts automatically to provide optimal air quality.

3 Convenience is within easy reach, thanks to the Navigation System.** Featuring voice guidance, 3D GPS and more, it's your on-the-road control centre.

** At time of print, detailed map coverage is available for most major urban areas of the United States and for certain metropolitan areas of Canada (Vancouver, Calgary, Edmonton, Winnipeg, Windsor, London, Toronto, Ottawa, Montreal, Quebec City and Halifax). Coverage is significantly limited outside these areas.



2013 SRX FEATURES & OPTIONS

	SRX FWD	SRX LEATHER COLLECTION FWD/AWD	SRX LUXURY COLLECTION AWD	SRX PERFORMANCE COLLECTION AWD	SRX PREMIUM COLLECTION AWD
SAFETY AND SECURITY					
AIRBAGS					
Driver and front-passenger, dual-stage, frontal with passenger detecting system and automatic passenger airbag suppression	S	S	S	S	S
Driver and front-passenger, seat-mounted side-impact	S	S	S	S	S
Front-to-rear, head curtain side-impact	S	S	S	S	S
DOOR LOCKS					
Rear-door, child-security, power	S	S	S	S	S
FORWARD COLLISION ALERT					
Radar-based system detects possible collision threats and alerts the driver using audible/visual cues	-	-	0 ¹	0 ¹	S
LANE DEPARTURE WARNING					
Camera-based detection system warns driver of unsignalled lane changes using audible cues or Safety Alert Seat pulses	-	-	0 ¹	0 ¹	S
ONSTAR® SYSTEM					
OnStar® In-Vehicle Communications and Assistance Service, includes 1 year of the Directions & Connections Plan* with Turn-by-Turn Navigation and OnStar RemoteLink™	S	S	S	S	S
REAR CROSS-TRAFFIC ALERT					
Radar-based system alerts driver of oncoming traffic with visual and audible cues when in reverse	-	-	S	S	S
SAFETY ALERT SEAT					
Warns driver to potential hazard with pulses through seat cushion either left, right or simultaneously (corresponding to the location of the hazard)	-	-	0 ¹	0 ¹	S
SAFETY RESTRAINTS					
LATCH (Lower Anchors and top Tethers for Children), in all rear seating positions	S	S	S	S	S
3-point belts for all seating positions, front safety belt pre-tensioners	S	S	S	S	S
SECURITY SYSTEM					
Content theft alarm, audible/visible, programmable	S	S	S	S	S
SIDE BLIND ZONE ALERT²					
Alerts driver with visual cues on exterior rear-view mirrors if a vehicle is detected entering into your blind spots	-	-	S	S	S
STABILITRAK®					
Electronic stability control system with trailer sway control	S	S	S	S	S
THEFT-DETERRENT SYSTEM					
Electronic immobilizer	S	S	S	S	S
TRACTION CONTROL					
Electronic, full-function, all-speed with on/off switch	S	S	S	S	S
DRIVER AWARENESS PACKAGE					
Includes Lane Departure Warning, Forward Collision Alert and Safety Alert Seat	-	-	0	0	S
DRIVER ASSIST PACKAGE					
Includes Adaptive Cruise Control, Automatic Collision Preparation and front and rear automatic braking	-	-	0 ³	0 ³	0 ³

	SRX FWD	SRX LEATHER COLLECTION FWD/AWD	SRX LUXURY COLLECTION AWD	SRX PERFORMANCE COLLECTION AWD	SRX PREMIUM COLLECTION AWD
MECHANICAL					
BRAKES					
Power, 4-wheel vented discs	S	S	S	S	S
4-wheel, 4-channel Anti-lock Braking System (ABS) with Panic Brake Assist, Dynamic Rear Brake Proportioning, Hill Start Assist and Auto-Dry Activation	S	S	S	S	S
DIFFERENTIAL					
Rear, limited-slip, electronic	-	-/S	S	S	S
DRIVE					
Front-Wheel Drive	S	S/-	-	-	-
All-Wheel Drive	-	-/S	S	S	S
ENGINE					
3.6L V6 VVT with Direct Injection 308 horsepower @ 6800 rpm and 265 lb.-ft. of torque @ 2400 rpm	S	S	S	S	S
Block heater	0	0	0	0	0
EXHAUST SYSTEM					
Dual, stainless steel with chrome tips	S	S	S	S	S
STEERING					
Power, hydraulic, rack-and-pinion	S	S	S	-	-
Power-assisted, hydraulic, rack-and-pinion ZF Servotronic® steering gear system, speed-sensitive	-	-	-	S	S
SUSPENSION					
4-wheel independent	S	S	S	S	S
Sport, with computer-controlled continuously variable real-time damping	-	-	-	S	S
TRANSMISSION					
6-speed automatic with Driver Shift Control	S	S	S	S	S
VEHICLE STARTER SYSTEM					
Remote, adaptive	-	-	S	S	S
TRAILERING PACKAGE					
Includes engine oil cooler, trailer hitch receiver, trailer hitch close out and wiring – maximum capacity 1588 kg (3500 lb.)	0	0	0	0	0
INTERIOR					
CARGO AREA					
Retractable cargo security shade	0	0	S	S	S
Cargo mat	S	S	S	S	S
U-Rail rear cargo system	-	-	S	S	S
Pet guard and luggage barrier net	0	0	0	0	0
CLIMATE CONTROL					
Automatic, dual-zone electronic climate control	S	S	S	S	-
Automatic, tri-zone electronic climate control	-	-	-	-	S
Air filtration system	S	S	S	S	S
Automatic air circulation/quality and humidity sensor	-	-	S	S	S
CONSOLE					
Front centre floor console with storage and dual cupholders	S	S	S	S	S
Overhead	S	S	S	S	S
CRUISE CONTROL					
Electronic, steering wheel-mounted controls	S	S	S	S	S

	SRX FWD	SRX LEATHER COLLECTION FWD/AWD	SRX LUXURY COLLECTION AWD	SRX PERFORMANCE COLLECTION AWD	SRX PREMIUM COLLECTION AWD
INTERIOR (CONTINUED)					
INSTRUMENTATION					
Analogue gauges (includes speedometer, tachometer, coolant temperature, fuel efficiency and fuel gauges)	S	S	S	S	S
Driver Information Centre with multi-colour graphics (includes odometer, 2 trip odometers, instantaneous fuel consumption, average fuel consumption, exterior temperature display, GM Oil Life Monitoring System, programmable features and message centre)	S	S	S	S	S
Tire pressure monitoring system	S	S	S	S	S
KEYLESS IGNITION					
Push-button start	S	S	S	S	S
LIGHTING					
Illuminated entry/exit, front map and cargo area	S	S	S	S	S
Ambient lighting with LED light pipes, spotlights	S	S	S	S	S
LOCKS					
Automatic power, programmable with lock-out protection	S	S	S	S	S
Remote keyless entry system	S	-	-	-	-
E-Z Key passive entry system, lock/unlock passive entry and personalization with activation notification and panic feature	-	S	S	S	S
MIRROR					
Rear-view mirror with OnStar® controls	S	-	-	-	-
Auto-dimming rear-view mirror with OnStar® controls	-	S	S	S	S
PEDALS					
Power adjustable brake and accelerator with memory	-	-	S	S	S
POWER OUTLETS					
12-volt auxiliary outlets, 4, 1 in instrument panel, 1 in front centre console, 1 in rear of centre console and 1 in rear cargo area	S	S	S	S	S
STEERING WHEEL					
Leather-wrapped	S	S	S	S	S
Leather-wrapped, heated with wood insert (includes wood shifter)	-	-	S	S	S
Audio system, cruise, OnStar® and Bluetooth® voice recognition controls	S	S	S	S	S
Manual tilt and telescopic adjustable column	S	S	S	S	S
SUNSHADES					
Driver and front-passenger extendable with illuminated vanity mirrors	S	S	S	S	S
UNIVERSAL HOME REMOTE					
3-channel programmable remote transmitter	-	S	S	S	S
WINDOWS					
Power with express-up and down on front windows with pinchguard and express-down feature on rear windows with rear passenger lock-out	S	S	S	S	S
MEMORY/PERSONALIZATION PACKAGE					
Automatically recalls settings for 2 drivers; the recall function remembers the position of the driver's seat and power adjustable pedals (if equipped), exterior rear-view mirror preferences and driver personalization features	-	S	S	S	S

	SRX FWD	SRX LEATHER COLLECTION FWD/AWD	SRX LUXURY COLLECTION AWD	SRX PERFORMANCE COLLECTION AWD	SRX PREMIUM COLLECTION AWD
--	---------	--------------------------------	---------------------------	--------------------------------	----------------------------

INTERIOR (CONTINUED)

WOOD TRIM PACKAGE

Includes heated steering wheel and genuine Sapele Pommele wood trim inserts on steering wheel, shifter, centre console and doors

	–	–	S	S	S
--	---	---	---	---	---

EXTERIOR

GLASS

Solar-Ray, tinted, deep-tinted, all windows behind front doors

	S	S	S	S	S
--	---	---	---	---	---

LIFTGATE

Power programmable liftgate, height adjustable

	–	–	S	S	S
--	---	---	---	---	---

LIGHTS

Daytime running lights, automatic light control with Twilight Sentinel®

	S	S	S	S	S
--	---	---	---	---	---

Headlights, tungsten halogen, projector beam

	S	S	S	–	–
--	---	---	---	---	---

Headlights, Xenon High-Intensity Discharge (HID) with adaptive forward lighting, auto-levelling and headlight washers

	–	–	–	S	S
--	---	---	---	---	---

Windshield wiper activated

	S	S	S	S	S
--	---	---	---	---	---

Fog lights

	–	–	–	S	S
--	---	---	---	---	---

Tail lights, LED

	S	S	S	S	S
--	---	---	---	---	---

Side vent light pipe accents, LED

	S	S	S	S	S
--	---	---	---	---	---

MIRRORS

Heated, power remote control, manual folding with driver-side auto-dimming feature, body-colour

	S	–	–	–	–
--	---	---	---	---	---

Heated, power remote control, power folding with driver-side auto-dimming feature, body-colour

	–	S	S	S	S
--	---	---	---	---	---

PARKING ASSIST

Ultrasonic front and rear obstacle detection system with audible/visible warning

	–	–	S	S	S
--	---	---	---	---	---

REAR VISION CAMERA

Reverse assist for parking or trailer towing hook-up (LCD display is located in interior rear-view mirror if Navigation System is not specified)

	–	–	S	S	S
--	---	---	---	---	---

ROOF RACK

Black roof rails

	S	S	–	–	–
--	---	---	---	---	---

Silver roof rails

	–	–	S	S	S
--	---	---	---	---	---

SUNROOF

UltraView roof with power tilt and sliding glass panel, power sunshade over front and rear seats and express-open feature

	–	0/–	S	S	S
--	---	-----	---	---	---

TIRES

P235/65R18 H-rated, all-season**

	S	S	S	–	–
--	---	---	---	---	---

P235/55R20 H-rated, all-season**

	–	–	–	S	S
--	---	---	---	---	---

WHEELS

18" x 8" 7-spoke aluminum with painted finish, RT4 (A)

	S	–	–	–	–
--	---	---	---	---	---

18" x 8" 7-spoke aluminum with bright machined finish RV1 (B)

	–	S	S	–	–
--	---	---	---	---	---

20" x 8" 7-spoke aluminum with bright machined finish and premium painted accents RTG (C)

	–	–	–	S	S
--	---	---	---	---	---

20" x 8" 7-spoke aluminum with polished finish RTU (D)

	–	–	–	0	0
--	---	---	---	---	---

20" x 8" 6-spoke aluminum with bright chrome finish SKB (E)

	–	–	–	0	0
--	---	---	---	---	---

EXTERIOR (CONTINUED)

WIPER/WASHER SYSTEM

Front, 2-speed with variable delay (intermittent)

	S	S	–	–	–
--	---	---	---	---	---

Front, rainsense with automatic variable control

	–	–	S	S	S
--	---	---	---	---	---

Rear, window wiper/washer with fixed delay

	S	S	S	S	S
--	---	---	---	---	---

SEATING

Front buckets with leatherette seating surfaces, power 8-way driver seat adjuster, manual 4-way front-passenger seat adjuster and manual lumbar adjusters

	S	–	–	–	–
--	---	---	---	---	---

Front buckets with leather seating surfaces, power 8-way driver seat adjuster with manual adjustable thigh support, power 8-way front-passenger seat adjuster and power lumbar adjusters

	–	S	S	S	S
--	---	---	---	---	---

Heated front bucket seats

	S	S	S	S	–
--	---	---	---	---	---

Heated and ventilated front bucket seats

	–	–	–	–	S
--	---	---	---	---	---

Heated rear seats, outboard

	–	–	–	–	S
--	---	---	---	---	---

Rear seatbacks, 60/40 split-folding with recliners, adjustable fore/aft with armrest, cupholders and pass-through

	S	S	S	S	S
--	---	---	---	---	---

ENTERTAINMENT

AM/FM stereo with single CD player, MP3 compatibility, Radio Data System® (RDS) and TheftLock®

	S	S	S	S	–
--	---	---	---	---	---

Cadillac User Experience (CUE) infotainment system, includes 8" LCD touch screen with haptic feedback and proximity sensing, interactive gesture control, voice recognition, enhanced USB¹ music playback and iPod® control, 60 "favourite" presets, smartphone apps integration² and SMS text messaging read-back³

	S	S	S	S	S
--	---	---	---	---	---

Same as above plus SD-based Navigation System⁴ and 10-speaker Bose® 5.1 surround sound audio system, AM/FM stereo with single CD player, MP3 compatibility, Radio Data System® (RDS) and TheftLock®, Cadillac User Experience (CUE)

	–	–	0 ⁶	0 ⁶	S
--	---	---	----------------	----------------	---

Same as above plus Rear Seat Entertainment System with rear-seat dual DVD/Blu-ray™ player, 2 seatback-mounted LCD screens, wireless headphones, remote control, audio/video input jacks, playback capability from USB⁴ SD or personal media player, and individual playback on either screen of audio or video files from the same flash device

	–	–	0	0	0
--	---	---	---	---	---

8-speaker Bose® premium audio system

	S	S	S	S	–
--	---	---	---	---	---

10-speaker Bose® 5.1 surround sound audio system

	–	–	0 ⁷	0 ⁷	S
--	---	---	----------------	----------------	---

Motorized flip-up/down screen for access to hidden instrument panel storage area

	S	S	S	S	S
--	---	---	---	---	---

USB ports, 2 – 1 in centre console storage area and 1 in instrument panel storage area⁴

	S	S	S	S	S
--	---	---	---	---	---

Auxiliary audio input jack, in instrument panel storage area

	S	S	S	S	S
--	---	---	---	---	---

Bluetooth® 3.0 hands-free phone and wireless audio streaming connectivity recognizes up to 10 Bluetooth®-enabled smartphones

	S	S	S	S	S
--	---	---	---	---	---

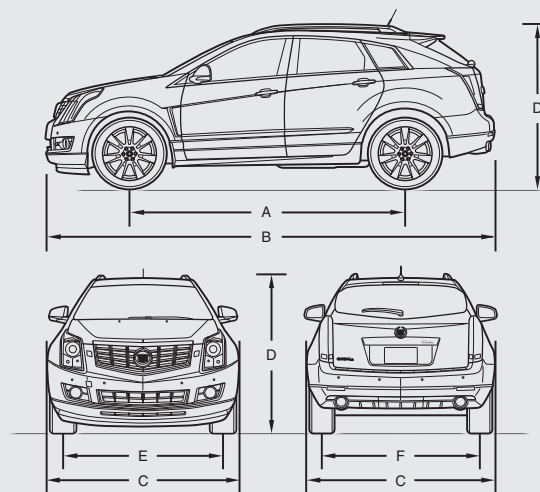
SD memory card slot with full song indexing, centre console-mounted

	S	S	S	S	S
--	---	---	---	---	---

SiriusXM Satellite Radio™††

	S	S	S	S	S
--	---	---	---	---	---

DIMENSIONS



EXTERIOR DIMENSIONS mm (in.)

Wheelbase (A)	2807 (110.5)
Length (B)	4834 (190.3)
Width (C)	1910 (75.2)
Height with roof rack (D)	1669 (65.7)
Front Track (E)	1621 (63.8)
Rear Track (F)	1610 (63.4)

INTERIOR DIMENSIONS mm (in.)

Headroom front/rear	1008/975 (39.7/38.4)
Legroom front/rear	1046/922 (41.2/36.3)
Shoulder room front/rear	1481/1430 (58.3/56.3)
Hip room front/rear	1407/1389 (55.4/54.7)
Seating capacity	5

CAPACITIES

Fuel	79.5 L (17.5 imp. gal.)
Cargo volume	
– rear seat up	844 L (29.8 cu. ft.)
– rear seat down	1730 L (61.1 cu. ft.)
Towing†	
– standard	1134 kg (2500 lb.)
– with available Towing Package	1588 kg (3500 lb.)

CURB WEIGHT, ESTIMATED kg (lb.)

3.6L FWD	1940 (4277)
3.6L AWD	2015 (4442)

† Includes weight of trailer, cargo, passengers and equipment. All towing recommendations are subject to change. Trailer tongue should be 10% of the maximum trailer weight but should not exceed the load rating specified for that vehicle, engine or hitch combination. See your dealer or refer to the SRX Owner's Manual for details.

S – Standard. 0 – Optional individually or in combination with other optional equipment.

- Included with available Driver Awareness Package.
- Before making a lane change, always check the Side Blind Zone Alert display, check the exterior and interior rear-view mirrors, look over your shoulder for vehicles and hazards, and activate your turn signal.
- Requires available Driver Awareness Package.
- Not compatible with all devices.
- Interim availability.
- Includes 10-speaker Bose® 5.1 Studio Surround® audio system.
- Included with available Navigation System.

* Visit onstar.ca for coverage map, details and system limitations. Services vary by model and conditions.

** All-season tires may not satisfy winter tire requirements in all regions of the country. Tires specifically designed for severe winter conditions and marked with the "winter tire" symbol ❄️ may be required during certain months or in certain regions. Contact your Provincial, Municipal or local road authority for information regarding which tires are required in your particular area.

† At time of print, detailed map coverage is available for most major urban areas of the United States and for certain metropolitan areas of Canada (Vancouver, Calgary, Edmonton, Winnipeg, Windsor, London, Toronto, Ottawa, Montreal, Quebec City and Halifax). Coverage is significantly limited outside these areas.

†† Available in 10 Canadian provinces and the 48 contiguous United States. Subscription sold separately after trial period. Visit siriusxm.ca for details.

2013 SRX INTERIOR COLOURS

Ebony with Ebony Accents¹



Titanium with Ebony Accents¹



Shale with Ebony Accents²



Shale with Brownstone Accents^{2,3}



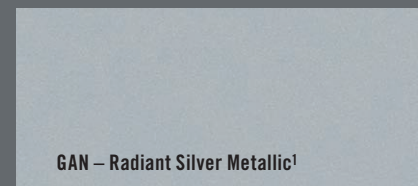
1 – Shown with leatherette seating surfaces.

2 – Shown with leather-appointed seating surfaces.

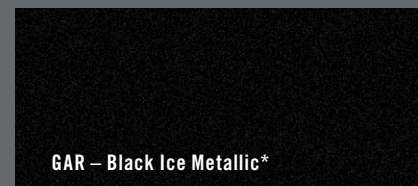
3 – Not available with Radiant Silver Metallic or Grey Flannel Metallic exterior colour.



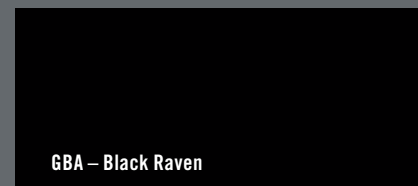
2013 SRX EXTERIOR COLOURS



GAN – Radiant Silver Metallic¹



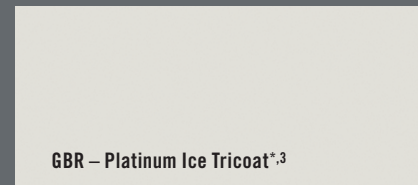
GAR – Black Ice Metallic*



GBA – Black Raven



GBE – Crystal Red Tintcoat* 2



GBR – Platinum Ice Tricoat* 3



GBV – Grey Flannel Metallic¹



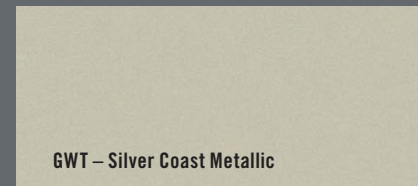
GGU – Evolution Green Metallic



GTS – Xenon Blue Metallic



GWS – Glacier Blue Metallic



GWT – Silver Coast Metallic

Exterior colours in this brochure are as close to the actual vehicle production colours as the printing process allows. For a more accurate colour sample, ask your Cadillac sales consultant to see the dealer showroom vehicle colour display.

* Available at extra cost.

1 – Not available with Shale/Brownstone interior.

2 – Tintcoat is a premium two-layer paint application with the addition of a tinted clearcoat, lending the finish an extra depth and brightness.

3 – Tricoat is a meticulous three-layer process that results in a dramatic hue-shifting colour reminiscent of a show-car finish.

WHEELS



A – 18" x 8" 7-spoke aluminum with painted finish (RT4)



B – 18" x 8" 7-spoke aluminum with bright machined finish (RV1)



C – 20" x 8" 7-spoke aluminum with bright machined finish and premium painted accents (RTG)



D – 20" x 8" 7-spoke aluminum with polished finish (RTU)



E – 20" x 8" 6-spoke aluminum with bright chrome finish (SKB)

ACQUISITION OPTIONS

In addition to the many exclusive privileges of Cadillac ownership, General Motors of Canada has created a range of supplementary support programs to enhance your ownership experience. Some of these programs assist you in purchasing the Cadillac of your choice. Others help protect you and your new Cadillac over the long term.

PURCHASING:

- **Purchase Financing or Leasing** – on-the-spot financing at your GM dealership[†]
- **The GM Card** – GM cardholders may redeem up to \$3500 GM Card[®] Earnings (subject to Vehicle Redemption Allowances) toward the Total Purchase Price on eligible new GM vehicles.^{††} For full program details please visit thegmcard.ca

[†] Subject to eligibility. ^{††} Program subject to change.

ADDITIONAL OWNERSHIP PROGRAMS:

- **GM Protection Plan (GMPP)** – the only extended service plan backed by the resources and commitment of General Motors. GMPP may be purchased at the time of sale or subsequently during the New Vehicle Limited Warranty period.[‡]

[‡] Conditions and limitations apply.

INFORMATION RESOURCES:

You can obtain more information about Cadillac vehicles and programs from your Cadillac dealer, or at these information centres:

- The Cadillac website at cadillac.ca
- The Cadillac Contact Centre at 1-888-446-2000 (1-800-263-3830 for TDD users).

A WORD ABOUT THIS BROCHURE

Some of the equipment shown or described throughout this brochure may be available at extra cost. We have tried to make this brochure comprehensive and factual. We reserve the right, however, to make changes at any time, without notice, in prices, colours, materials, equipment, specifications, models and availability. Specifications, dimensions, measurements, ratings and other numbers in this brochure and other printed materials provided at the dealership or affixed to vehicles are approximate based upon design and engineering drawings and prototypes and laboratory tests. Your vehicle may differ due to variations in manufacture and equipment. Since some information may have been adapted since the time of printing, please check with your Cadillac dealer for complete details. General Motors of Canada Limited reserves the right to lengthen or shorten the model year for any product, for any reason, or to start and end model years at different times.

A WORD ABOUT ASSEMBLY

Cadillac vehicles are equipped with engines and components produced and assembled by different operating units of General Motors, its subsidiaries and suppliers and these engines and components may change or be obtained from different sources from time to time. All such engines and components are approved for use in Cadillac vehicles. Certain equipment ordered may be unavailable at the time of assembly and we suggest that you verify that your vehicle includes the equipment you ordered, or if there are changes, that they are acceptable to you.

A WORD ABOUT CORROSION

Cadillacs are designed and built to resist corrosion. All body sheet metal components are warranted against rust-through corrosion for 6 years. There is no deductible for rust-through repairs. Application of additional rust-inhibiting materials is not required under the corrosion coverage and none is recommended.

TRADEMARKS

The marks appearing in this Cadillac brochure including, but not limited to: General Motors, GM, Cadillac, the Cadillac badge, SRX and their respective logos, emblems, slogans and vehicle model names and body designs; and other marks such as Cadillac User Experience, CUE, StabiliTrak and Twilight Sentinel are trademarks of General Motors and/or General Motors of Canada Limited, its subsidiaries, affiliates or licensors.

OnStar and the OnStar emblem are registered trademarks and OnStar RemoteLink is a trademark of OnStar, LLC.

TheftLock is a registered trademark of Delphi Technologies, Inc.

Radio Data System (RDS) is a registered trademark of the U.S. National Association of Broadcasters.

SiriusXM, the SiriusXM logo, channel names and logos are trademarks of SiriusXM Radio Inc.

Bose, Centerpoint and Surround Sound are registered trademarks of the Bose Corporation.

App Store, iPhone and iPod are trademarks of Apple Computer, Inc., registered in the U.S. and other countries.

Android is a trademark of Google Inc.

BlackBerry is a registered trademark of Research In Motion, Limited.

Bluetooth is a registered trademark of Bluetooth SIG Inc.

Blu-ray Disc is a trademark owned by Blu-ray Disc Association.

Servotronic is a registered trademark of ZF Lenksysteme GmbH.

Stitcher is a trademark of Stitcher SmartRadio.

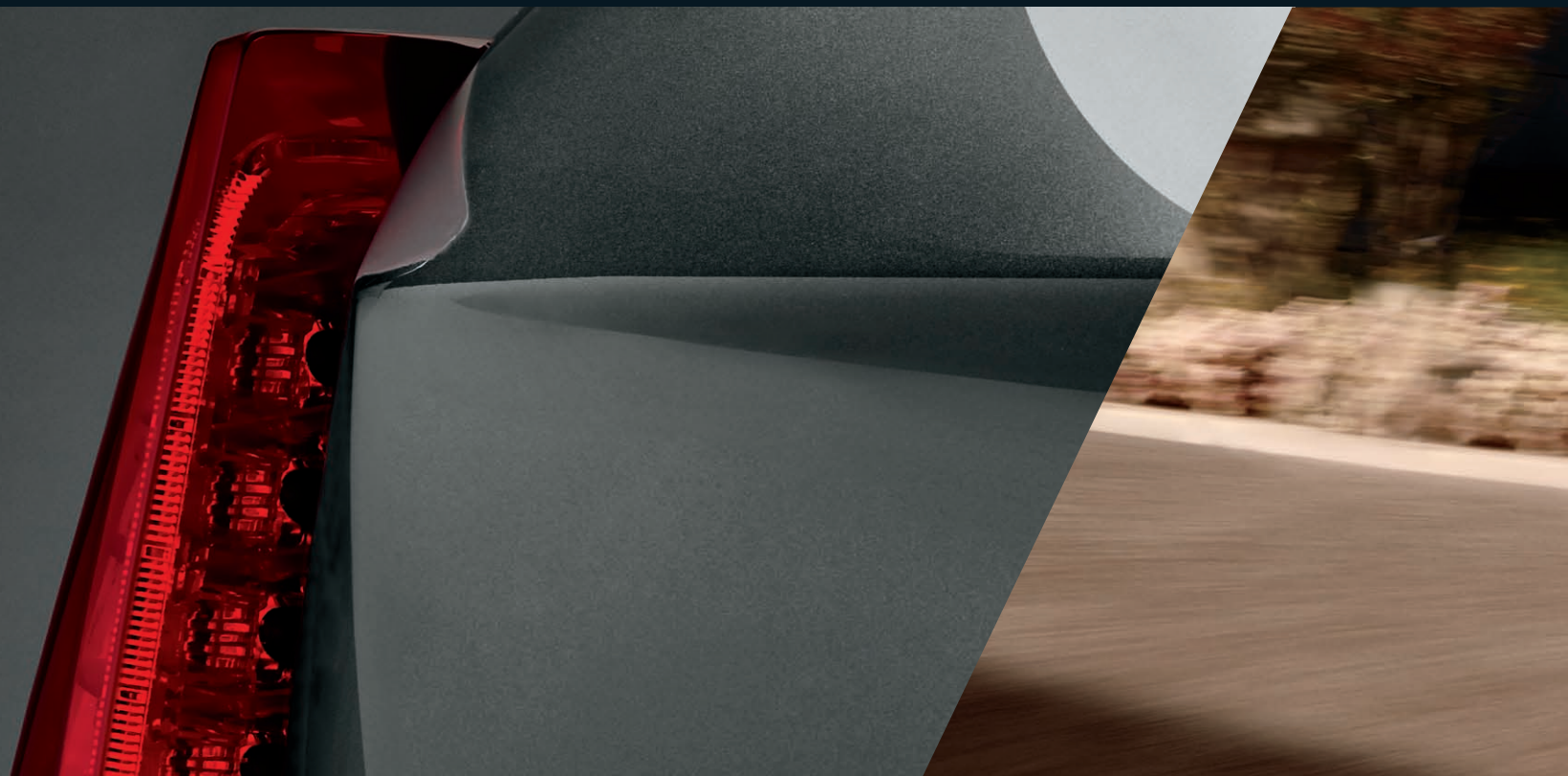
Gracenote is a registered trademark of Sony Corporation of America.

© Copyright 2012 General Motors of Canada Limited. All Rights Reserved. All text, images, graphics, and other materials in this Cadillac brochure are subject to the copyright and other intellectual property rights of General Motors and/or General Motors of Canada Limited. These materials may not be reproduced, distributed or modified without the express written permission of General Motors and/or General Motors of Canada Limited.

Printed in Canada, October 2012.



Cadillac



cadillac.ca



192-13-B-004E