

CADILLAC DTS





CADILLAC DTS

Spacious, luxurious and possessed of a unique presence, full-size Cadillac sedans have long been the cars of choice for celebrities, heads of state and high achievers everywhere. The latest in that long line of elite automobiles, DTS embodies the spirit of today's Cadillac in its crisp styling, cutting-edge technology, refined V8 performance and a vast array of premium amenities. At the same time, DTS carries on the finest of Cadillac traditions, with the roomiest interior of any Cadillac sedan and a driving feel that's at once relaxing and invigorating. DTS. It's the large luxury sedan at its most evolved.

For more information about DTS visit our website at dts.gmcanada.com



CADILLAC DTS





AN EXTRAORDINARY PRESENCE.
AND AN EXTRAORDINARY
PERFORMANCE.



EVEN THE WIND IS SEDUCED.

From the moment you first see DTS, its presence is unmistakable. Measuring well over five metres from bumper to bumper, DTS is one of the largest sedans on the road today. This impressive stature is accentuated by elegant geometric shapes, sweeping horizontal lines and crisp intersections. DTS is also replete with bold details that reward closer inspection, including such Cadillac trademark touches as vertical headlights, fast-illuminating LED tail lights, a full-width LED centre high-mounted stop light and sculpted alloy wheels. It's worth noting, too, that the DTS body is as seductive to the wind as it is to the eye. Its aerodynamic drag measures a low 0.32, which results in improvements in performance, fuel efficiency and interior peace and quiet.

Extraordinarily close tolerances help reduce wind noise, as do structureless wiper blades. Laminated front and rear movable side glass also helps tame unwanted disturbances by keeping residual high-frequency whistling from entering the cabin.



Inside the DTS cabin, the watchwords are quality and precision. Premium materials are utilized throughout and a craftsman's touch is evident. Case in point: assembly quality so exacting that when you tug the driver's door closed behind you, the gap between the instrument panel and door trim is so small it's barely perceptible.



While the standard steering-wheel mounted switches make the DTS audio system easy and convenient to adjust, a host of sophisticated features make it a delight to listen to. Highlights include a CD player, no fewer than eight premium speakers and an auxiliary audio input jack that allows you to entertain your passengers with music stored on your MP3 player. It all adds up to a system that reproduces your favourite sounds with rare dimension and clarity.

DELIGHT YOUR SENSES.

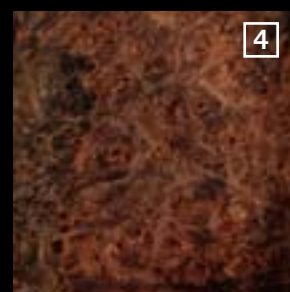
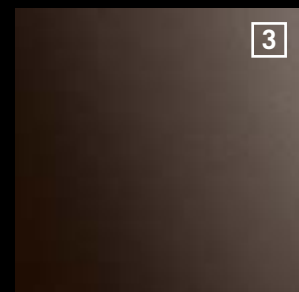
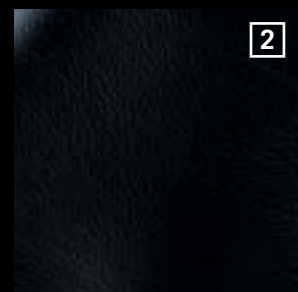
Beneath the fine leather, DTS's seats are engineered for a superior level of driving enjoyment. The front buckets are power adjustable eight ways. For optimal support for your lower back, power lumbar adjusters are standard on the front seats and available in the rear – a DTS exclusive in its class. The seat padding uses a dual firmness strategy, combining soft cushioning in the head and shoulder area with firm support in the cushion and lower seatback area, for optimal long-distance support. Heated front and rear seats are available, as are front seats that are both heated and cooled internally, assuring your comfort in every season.





ALL AROUND YOU, THE FEEL OF QUALITY.

Fine materials make the DTS passenger compartment a delight for you, your family, your friends and your colleagues. Chrome and aluminum accents abound. Natural Burled Walnut trim is available to adorn the instrument panel, console and doors. DTS also offers a choice of three different premium leathers – the most in any full-size luxury sedan – including available Teháma aniline skins so supple, they're typically found only on the most exclusive home furniture.



1. STANDARD NUANCE LEATHER – Incorporates a soft-to-the-touch feel with a sandstone finish.
2. AVAILABLE TUSCANY LEATHER – Semi-aniline, specially selected and tanned skins provide a rich feel.
3. AVAILABLE TEHÁMA LEATHER – Automotive aniline, naturally finished for a premium glove-like texture.
4. AVAILABLE NATURAL BURLED WALNUT WOOD – With a distinctive grain and a warm natural colour.



THE ONGOING EVOLUTION OF DRIVING PLEASURE AND CONVENIENCE.

Innovative new systems in your DTS will allow you to enjoy highway driving like never before. Take the available Adaptive Cruise Control (ACC), for example. It's a radar-based system that can actually sense when traffic appears ahead. Should a slower vehicle block your progress, the ACC will automatically slow your DTS and maintain a pre-set following distance. When the vehicle ahead turns off, or when you change to an open lane, the ACC will return your DTS to your preferred cruising speed. The available IntelliBeam headlight system offers a similarly advanced level of convenience. In traffic, it turns your high beams down, to avoid dazzling other drivers, and turns them up again when appropriate, to provide maximum illumination and safety.

*Adaptive Cruise Control is no substitute for the driver's personal responsibility to operate the vehicle in a safe manner. The driver needs to remain attentive to traffic and road conditions and provide the steering, braking or other inputs necessary to retain control of the vehicle.

Why interrupt the pleasure of the drive to ask directions or pore over a map, especially when DTS's available DVD navigation system can act as your personal travel guide? With roughly 11 million kilometres of roadway stored in memory, it can guide you to destinations across Canada and the U.S.* For your convenience, the system includes a voice recognition feature that responds to your spoken commands. It can talk back, too, to provide you with detailed, turn-by-turn directions.

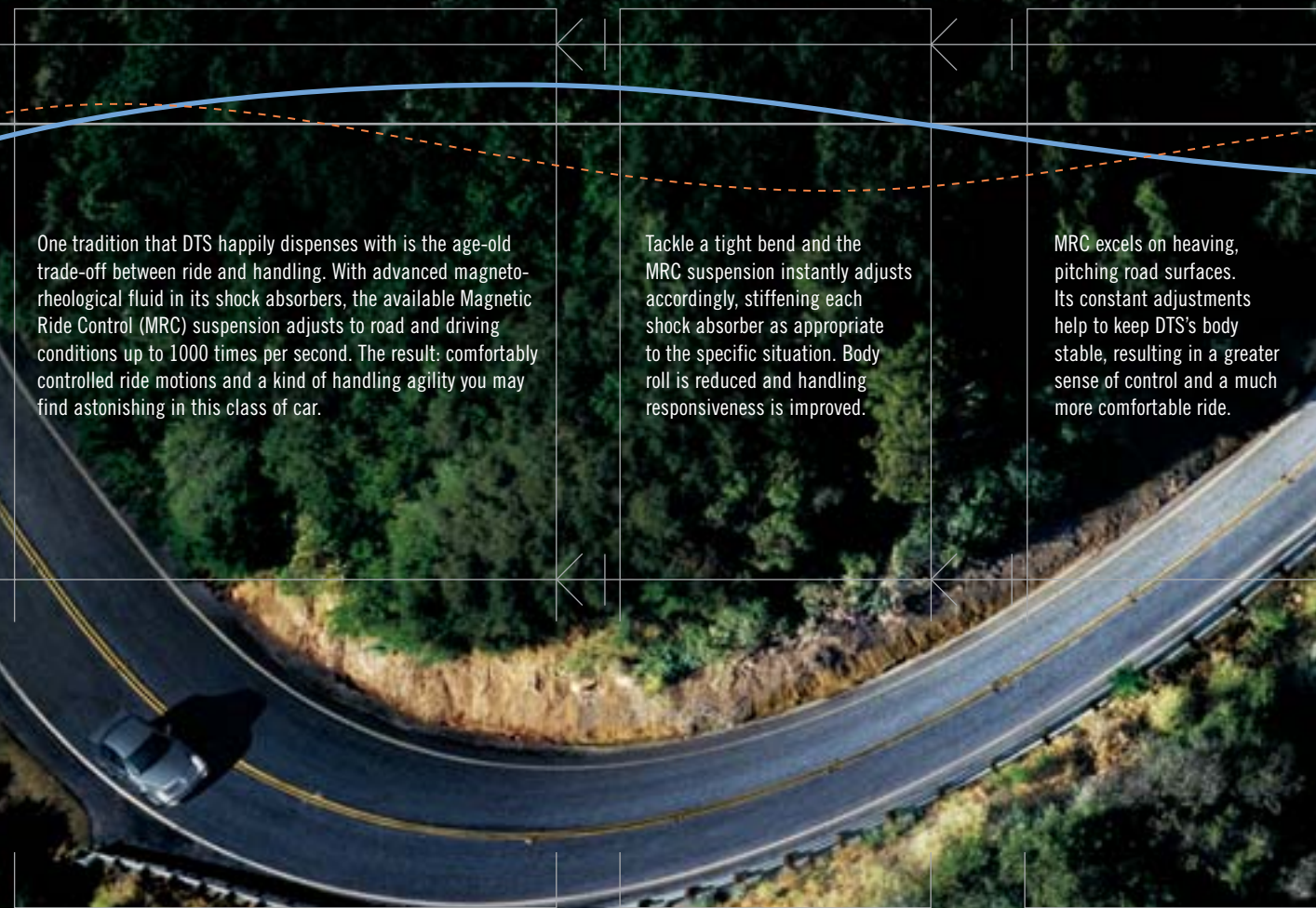
*At time of print, detailed map coverage is available for most major urban areas of the United States and for certain metropolitan areas of Canada (Vancouver, Calgary, Edmonton, Winnipeg, Windsor, London, Toronto, Ottawa, Montreal, Quebec City and Halifax). Coverage is significantly limited outside these areas. Choose the factory navigation option and you will receive an updated navigation DVD each of the first two years following your delivery.



On cold February mornings and blistering July afternoons alike, Adaptive Remote Start helps make your DTS's interior an even more inviting environment on your arrival. Simply touch the button on the fob from up to 60 metres (200 feet) away. Not only does the engine engage automatically, but so do the climate control system and, when appropriate, the defrosters and heated seats. By the time you arrive at your DTS's door, the cabin is well on its way to being a comfortable sanctuary from whatever the weather may be outside.



MAGNETIC RIDE CONTROL: ACHIEVING AN EXTRAORDINARY BALANCE.



One tradition that DTS happily dispenses with is the age-old trade-off between ride and handling. With advanced magneto-rheological fluid in its shock absorbers, the available Magnetic Ride Control (MRC) suspension adjusts to road and driving conditions up to 1000 times per second. The result: comfortably controlled ride motions and a kind of handling agility you may find astonishing in this class of car.

Tackle a tight bend and the MRC suspension instantly adjusts accordingly, stiffening each shock absorber as appropriate to the specific situation. Body roll is reduced and handling responsiveness is improved.

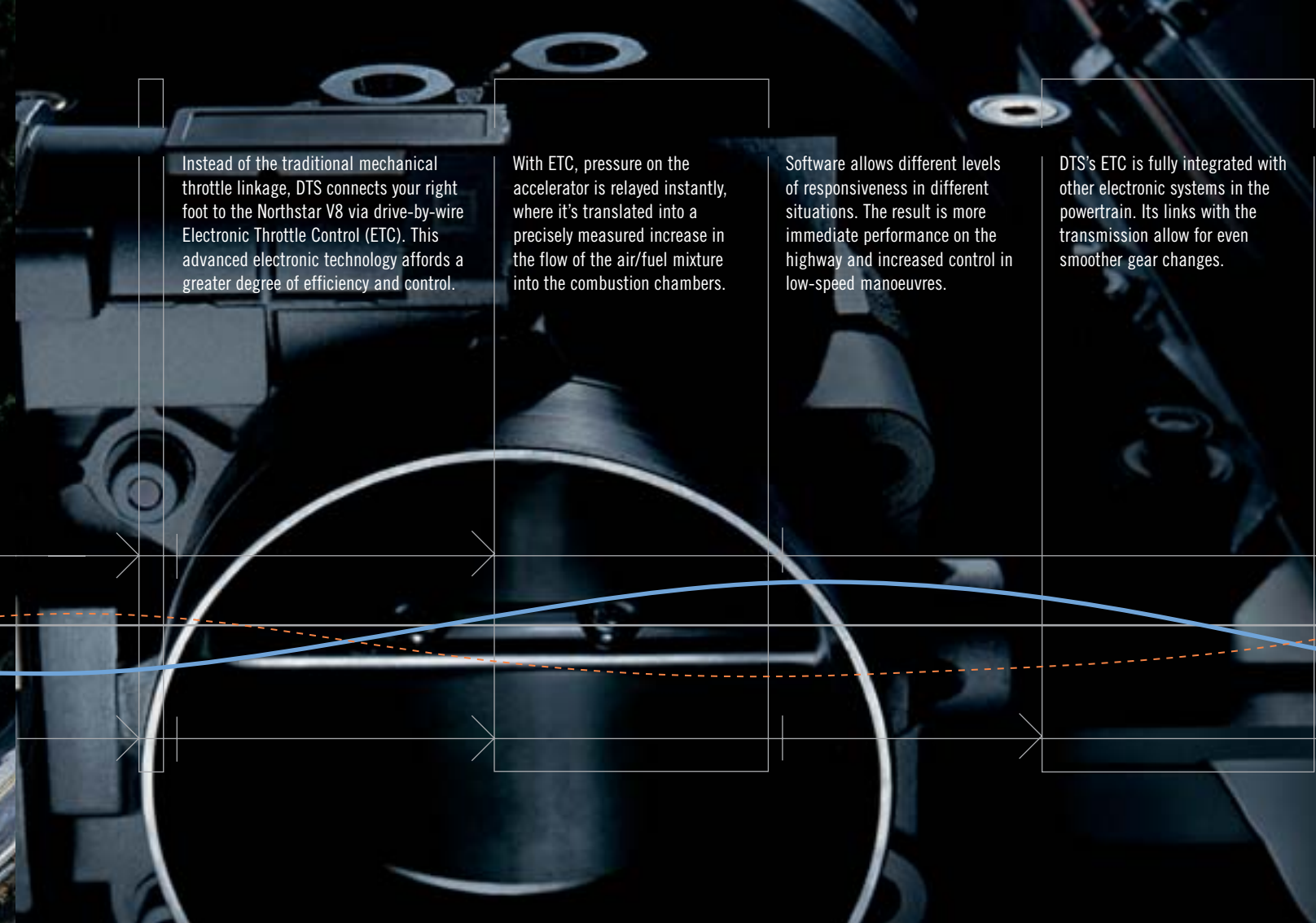
MRC excels on heaving, pitching road surfaces. Its constant adjustments help to keep DTS's body stable, resulting in a greater sense of control and a much more comfortable ride.

Instead of the traditional mechanical throttle linkage, DTS connects your right foot to the Northstar V8 via drive-by-wire Electronic Throttle Control (ETC). This advanced electronic technology affords a greater degree of efficiency and control.

With ETC, pressure on the accelerator is relayed instantly, where it's translated into a precisely measured increase in the flow of the air/fuel mixture into the combustion chambers.

Software allows different levels of responsiveness in different situations. The result is more immediate performance on the highway and increased control in low-speed manoeuvres.

DTS's ETC is fully integrated with other electronic systems in the powertrain. Its links with the transmission allow for even smoother gear changes.



YOU'VE NEVER FELT MORE INTIMATELY CONNECTED.

GO YOUR OWN WAY.

DTS's lengthy wheelbase, broad track and substantial tires make for a highly stable, predictable vehicle. Available StabiliTrak takes that a step further. In the event of a lateral skid, StabiliTrak detects that your DTS is no longer following your desired path. It steps in instantly, applying each brake individually, as necessary, to help restore vehicle control. It operates so unobtrusively it can often end a potentially dangerous skid before you even know it's begun.



ENGINEERED TO HELP YOU BREATHE EASY.

In the finest Cadillac tradition, the new DTS has been designed and equipped to provide you with a degree of safety that's far beyond the ordinary. Particular attention has been paid to helping you avoid collisions of all kinds whenever possible. DTS's well-placed controls, excellent outward visibility and powerful four-wheel disc braking system all play their roles, as does the available front and rear Ultrasonic Parking Assist System that automatically alerts you when pets, children and other objects are in your path at parking speeds. Other DTS features – including eight air bag protection zones*, the most in DTS's class – help to protect you and your passengers should an impact prove unavoidable. Your DTS can even protect you after a crash has taken place. Should your air bags have deployed, the standard OnStar System will automatically alert an OnStar Advisor** who can dispatch emergency services to your location if necessary.

*Always use safety belts and proper child restraints, even in vehicles equipped with air bags. Even with Passenger Sensing System, children are safer when properly secured in a rear seat. Never place a rear-facing infant restraint in the front seat of any vehicle equipped with an active frontal air bag. Refer to the Owner's Manual for more safety information.

**Please refer to page 23 for more information regarding OnStar.



> ZONE

no. 7/8
HEAD CURTAIN SIDE AIR BAGS
REAR PASSENGERS

Helps protect head and neck from injury in certain side-impact collisions. Covers all outboard seats.

no. 1/2

> ZONE
HEAD CURTAIN SIDE AIR BAGS
DRIVER & FRONT PASSENGER

Helps protect head and neck from injury in certain side-impact collisions. Covers all outboard seats.

no. 5/6

> ZONE
SEAT-MOUNTED THORAX SIDE-IMPACT AIR BAGS
DRIVER & FRONT PASSENGER

Helps protect the mid-section of the body from injury in certain side-impact collisions. Covers all front outboard seats.

no. 3

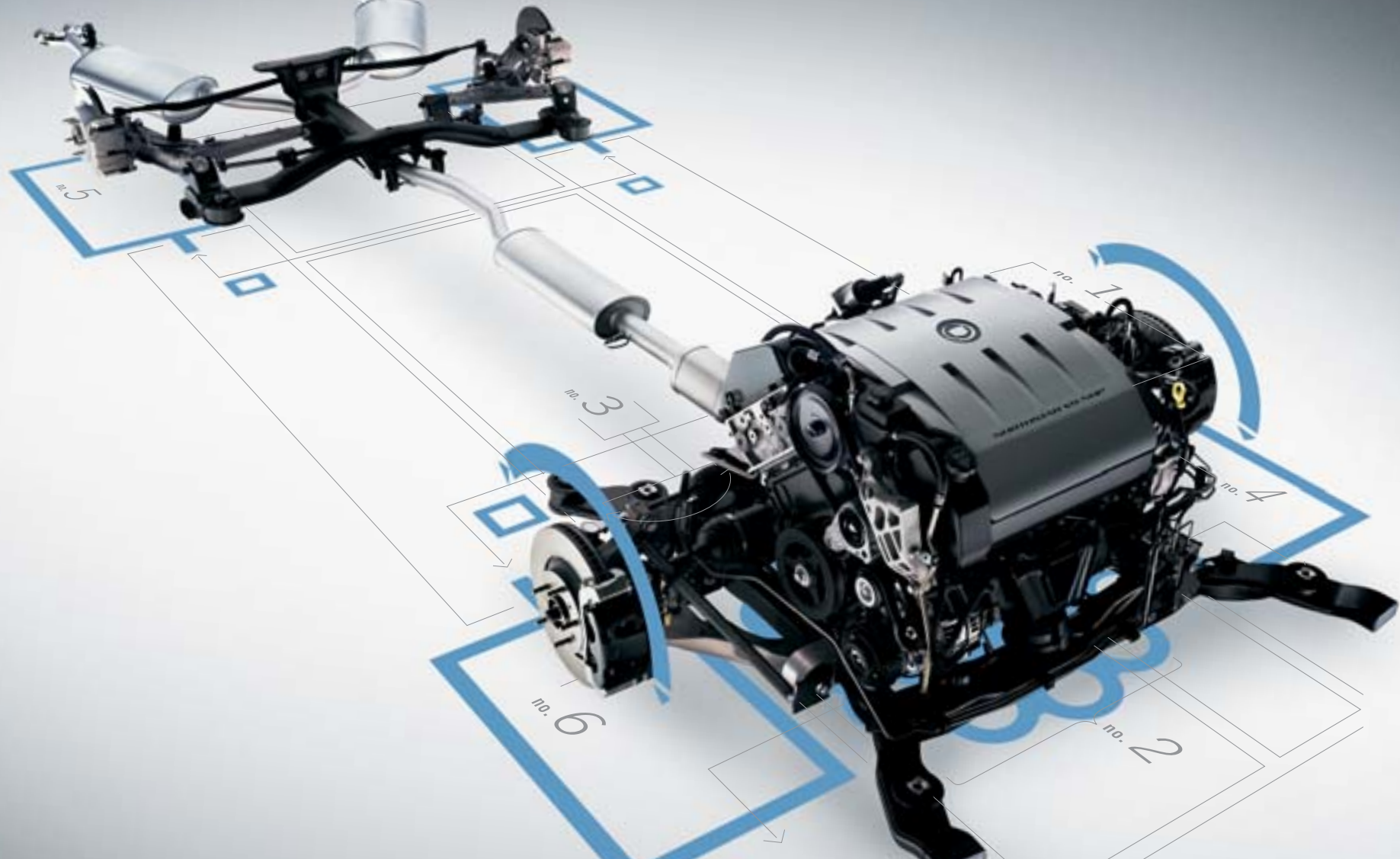
> ZONE
DUAL-STAGE FRONTAL AIR BAG
DRIVER

Helps protect chest, head and neck from injury in moderate to severe frontal crashes.

no. 4

> ZONE
AUTOMOTIVE-FIRST DUAL-DEPTH, DUAL-STAGE AIR BAG
FRONT OUTBOARD PASSENGER

Senses severity of event, safety belt usage and occupant seat position. Helps protect chest, head and neck from injury in moderate to severe frontal crashes.



CADILLAC TECHNOLOGY: INTELLIGENCE AT WORK.

DTS's delightful road manners derive from a long list of premium hardware systems. Some add to DTS's performance. Others, to a heightened sense of control and safety. And still others, to DTS's extraordinary comfort and sophistication. All have been carefully integrated to create a single, unified whole.

1. NORTHSTAR 4.6L V8

The standard 275 horsepower Northstar engine is tuned for high peak torque and excellent around-town acceleration. The available 292 horsepower version delivers increased power at higher engine speeds.

2. FULLY ISOLATED ENGINE CRADLE

The Northstar engine is mounted to a specially formed cradle, isolating the engine from the chassis so noise and vibrations to the body are minimized.

3. PRECISION STEERING

Standard Magnasteer is a responsive system that always provides just the right amount of power assist in every situation, from low-speed manoeuvring to highway cruising.

4. PERFORMANCE BRAKING

Large disc brakes at all four wheels, an anti-lock braking system (ABS) and Dynamic Rear Proportioning (DRP) all contribute to excellent brake performance.

5. ADVANCED HANDLING – STABILITRAK WITH BRAKE ASSIST

Available StabiliTrak helps correct lateral skids. It also includes Panic Brake Assist, which automatically applies maximum braking power when emergency braking is detected.

6. ALL-SPEED TRACTION CONTROL

Should wheelspin occur at any speed, DTS's traction control will step in to restore control by reducing engine torque and, if necessary, applying the brakes.



Underlying the new DTS's exceptional performance, sophistication and refinement is a virtual catalogue of high-tech systems, all linked together by a state-of-the-art electronic architecture. The crucial component is a high-speed data bus that communicates at speeds up to 50 times faster than previous designs, ensuring the precise and timely coordination of the car's diverse systems. It's an intelligent application of cutting-edge technology that yields advances in control, safety, reliability and convenience.

PERFORMANCE COMMAND NETWORK Links critical motion systems such as:

- 1 Engine control
- 2 Transmission control
- 3 StabiliTrak with anti-lock brakes
- 4 Integrated body control
- 5 GM Goodwrench Remote Diagnostics
- 6 Radar-based Adaptive Cruise Control.

PERSONALIZED CONTROL NETWORK Coordinates vital control systems such as:

- 7 Climate controls
- 8 Driver Information Centre
- 9 Air bag safety diagnostics
- 10 IntelliBeam controller
- 11 Adaptive Remote Start
- 12 OnStar communications.

2007 DTS FEATURES & OPTIONS

SAFETY AND SECURITY

	DTS Luxury I
AIR BAGS	
Driver and front passenger-side, dual-stage, frontal with passenger-side dual-depth and automatic air bag suppression	S
Driver and front passenger-side, seat-mounted, side-impact	S
Front to rear, side head curtain	S
DOOR LOCKS	
Automatic power, programmable with lock-out protection	S
Rear door, child-security	S
HEADLIGHTS	
Daytime Running Lights, automatic light control with Twilight Sentinel	S
Windshield wiper activated	S
Xenon High-Intensity Discharge (HID)	S
KEYLESS ENTRY SYSTEM	
Remote, includes remote vehicle starter system, lock/unlock, personalization, notification activation and Panic feature; activates seat and climate control, windshield and rear defrost	S
ONSTAR SYSTEM	
Digital OnStar In-Vehicle Communications and Assistance Service, includes one-year Directions & Connections Plan with Turn-by-Turn Navigation*	S
SAFETY RESTRAINTS	
LATCH (Lower Anchors and top Tethers for Children), rear seats	S
Tether anchors – child-seat, rear-seat 3-positions	S
THEFT-DETERRENT SYSTEM	
PASS-Key III+ with immobilizer	S
Tamper alarm for doors and trunk, audible/visible alarm	S
TRACTION CONTROL	
Electronic, full-function, all-speed with on/off switch	S
MECHANICAL	
BRAKES	
Power, 4-wheel discs	S
4-wheel, 4-channel anti-lock braking system (ABS) with Dynamic Rear Brake Proportioning	S
DRIVE	
Front-wheel drive	S
ENGINE	
4.6L Northstar V8 with 275 horsepower @ 6000 rpm and 295 lb.-ft. of torque @ 4400 rpm	S
Block heater	0
STEERING	
Speed-sensitive variable-assist, Magnasteer, rack-and-pinion	S
SUSPENSION	
4-wheel independent	S
Automatic rear-level control system	S
TRANSMISSION	
4-speed automatic with overdrive	S
INTERIOR	
AUDIO SYSTEMS	
AM/FM stereo with CD player, MP3 playback, Radio Data System (RDS), auxiliary audio input jack, TheftLock and 8 speakers	S
AM/FM stereo with in-dash 6-disc CD changer, MP3 playback, Radio Data System (RDS), auxiliary audio input jack, TheftLock and 8 speakers	0
AM/FM stereo with CD player, auxiliary audio input jack, Weather Band, Digital Signal Processing, 8 speakers, DVD Navigation for map coverage** in Canada and USA, GPS based, touch screen, voice and/or text guidance, DVD/video capabilities (vehicle in Park position only) and voice recognition	0
XM Satellite Radio ¹	0
CARGO AREA	
Trunk Convenience Package, includes cargo convenience net and trunk mat	0
CLIMATE CONTROL	
Automatic, dual-zone electronic climate controls	S
Air filtration system – particulate	S
CONSOLE	
Front centre floor console with shifter, armrest, two-level storage and dual cupholders and auxiliary power outlet	S

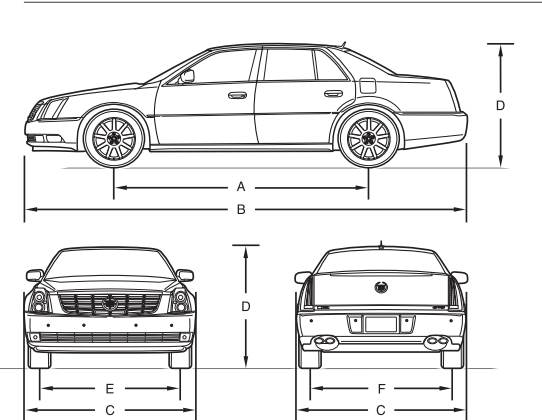
INTERIOR (continued)

	DTS Luxury I
CRUISE CONTROL	
Electronic, steering wheel-mounted with resume, coast and decelerate/accelerate features	S
Adaptive Cruise Control, RADAR transceiver automatically adjusts speed to maintain pre-set following distance	0
INSTRUMENTATION	
Analogue with Driver Information Centre	S
Tire pressure monitoring system	S
FLOOR MATS	
Front and rear, carpeted	S
LIGHTING	
Illuminated entry/exit, theatre dimming, instrument panel courtesy, glovebox, front map, rear reading and trunk	S
MEMORY/PERSONALIZATION PACKAGE	
Automatically recalls settings for 2 drivers based on their individual remote keyless access key fob: the recall function remembers the position of the driver's seat, exit seating position, exterior rear-view mirror preferences, passenger tilt-down parallel park feature, climate control settings, radio station and cellphone pre-sets and power tilt and telescopic steering wheel	0 ²
MIRRORS	
Electrochromic, auto-dimming rear-view mirror with electronic compass and 3-button OnStar controls	S
Illuminated driver and front-passenger visor vanity mirrors	S
SEATING	
Front bucket seats with power 8-way driver and front-passenger seat adjusters, power recliners and lumbar adjusters (5-passenger)	S
Divided bench front seat with power 8-way driver and front-passenger seat adjusters and power recliners (6-passenger)	0
Nuance leather seating surfaces	S
Tuscany full leather seats	0 ²
Teháma full leather seats	0 ²
Front heated and cooled seating areas, includes perforated leather seating areas	0 ⁴
Rear seatback, fixed back with armrest pass-through and dual cupholders	S
STEERING WHEEL	
Leather-wrapped with audio and cruise control switches	S
Tilt adjustable column	S
TRUNK	
Power remote release with Valet lock-out	S
UNIVERSAL HOME REMOTE	
3-channel programmable remote transmitter	0
WINDOWS	
Power with express-up and down feature on front windows with pinchguard and express-down feature on rear windows with window lock-out	S
WOOD ACCENTS	
Simulated medium ash wood accents on instrument panel and door inserts	S
EXTERIOR	
FRONT GRILLE	
Body-coloured, painted	0 ²
GLASS	
Solar-Ray, tinted	S
HOOD ORNAMENTATION	
Stand-up Cadillac wreath and crest	0
LIGHTS	
Fog lights	S
Front cornering lights	S
MIRRORS	
Manual folding, heated, power remote control, with integral turn signal in mirror glass	S
SUNROOF	
Power, tilt and sliding glass panel with express-open feature	0 ²
TIRES	
P235/55R17 S-rated, all-season	S
WHEELS	
17" x 7" 7-spoke machined aluminum (A)	S
17" x 7" 7-spoke chrome finish aluminum (B)	0
WIPER/WASHER SYSTEM	
Structureless, airfoil wipers, 2-speed with variable delay (intermittent)	S

PREFERRED EQUIPMENT GROUPS

	DTS Luxury II 1SC	DTS Luxury III 1SD	DTS Performance 1SE
CLIMATE CONTROL			
Automatic, tri-zone electronic climate controls	•	•	•
MEMORY/PERSONALIZATION PACKAGE			
Automatically recalls settings for 2 drivers based on their individual remote access key fob: the recall function remembers the position of the driver's seat, exit seating position, exterior rear-view mirror preferences, passenger tilt-down parallel park feature, climate control settings, radio station and cellphone pre-sets and power tilt and telescopic steering wheel	• ²	•	•
MIRRORS			
Exterior, driver-side auto-dimming feature	•	•	•
SEATING			
Front heated and cooled seating areas, includes perforated leather seating areas	•	•	•
Rear seat, heated outboard seating areas	•	•	•
STEERING WHEEL			
Leather, heated	•		
SUSPENSION			
StabiliTrak vehicle stability enhancement system 4-channel, includes Panic Brake Assist	•	•	•
ULTRASONIC PARKING ASSIST			
Front and rear obstacle detection system with audible/visible warning	•	•	•
WIPER/WASHER SYSTEM			
Heated windshield washer fluid	•	•	•
AUDIO SYSTEM			
XM Satellite Radio ¹	•	•	•
AM/FM stereo with In-dash 6-disc CD changer, MP3 playback, Radio Data System (RDS), auxiliary audio input jack and TheftLock		•	•
Base Sound System Package – includes 8 Bose amplified speakers		•	•
CARGO AREA			
Cargo convenience net		•	•
Trunk mat		•	•
LIGHTS			
IntelliBeam headlights with automatic low/high beam control		•	•
MIRRORS			
Power folding		•	•
Rear-seat overhead illuminated vanity mirrors		•	
SEATING			
Driver and front-passenger power lumbar massaging		•	•
Rear seat, height adjustable head restraints		•	•
Rear seat, power 4-way lumbar adjusters		•	•
STEERING WHEEL			
Leather, heated with natural Burl Walnut wood accents		•	•
Power tilt and telescopic adjustable column		•	•
SUNSHADE			
Rear window, power		•	•
UNIVERSAL HOME REMOTE			
3-channel programmable remote transmitter		•	•
WHEELS			
17" x 7" 9-spoke chrome finish aluminum (C)		•	
WIPER/WASHER SYSTEM			
Rainsense with automatic variable delay		•	•
WOOD ACCENTS			
Natural Burl Walnut wood trim on instrument panel, door inserts, steering wheel, shifter plate and shift knob with front bucket seats		•	•
ENGINE			
4.6L Northstar V8 High-output with 292 horsepower @ 6300 rpm and 288 lb.-ft. of torque @ 4500 rpm			•
SUSPENSION			
Magnetic Ride Control – computer controlled suspension system with adjustable shock absorbers			•
TIRES			
P245/50R18 H-rated, all-season			•
TRANSMISSION			
4-speed automatic with overdrive and Performance Algorithm Shifting			•
WHEELS			
18" x 7.5" 9-spoke chrome finish aluminum (D)			•

DIMENSIONS



EXTERIOR DIMENSIONS

Wheelbase (A)	2936 mm (115.6 in.)
Length (B)	5273 mm (207.6 in.)
Width (C)	1900 mm (74.8 in.)
Height (D)	1463 mm (57.6 in.)
Front track (E)	1591 mm (62.6 in.)
Rear track (F)	1580 mm (62.2 in.)

INTERIOR DIMENSIONS

Headroom	
Front/rear	973/975 mm (38.3/38.4 in.)
Legroom	
Front/rear	1076/1067 mm (42.4/42.0 in.)
Shoulder room	
Front/rear	1524/1509 mm (60.0/59.2 in.)
Hip room	
Front/rear	1455/1415 mm (57.3/55.7 in.)
Seating capacity	5/6

CAPACITIES

Fuel	68 L (15.0 imp. gal.)
Cargo volume	532 L (18.8 cu. ft.)
Towing ¹	454 kg (1000 lb.)

CURB WEIGHT, ESTIMATED

DTS	1818 kg (4009 lb.)
-----	--------------------

¹ Includes weight of trailer, cargo, passengers and equipment. All towing recommendations are subject to change. Trailer tongue load should be 10% of the maximum trailer weight but should never exceed the load rating for that vehicle, engine or hitch combination. See your dealer or refer to the DTS Owner's Manual for details.

² Includes 3 free trial months beyond which service fees apply. Available in 10 Canadian Provinces and 48 contiguous United States.
³ Requires available heated and cooled seats.
⁴ Not available with 6-passenger divided bench front seating.
⁵ Requires Memory/Personalization Package.
⁶ Not available with Adaptive Cruise Control.
⁷ Deletes rear-seat overhead vanity mirrors and requires universal home remote.
⁸ Power tilt and telescopic steering wheel not included in PEG 1SC.
⁹ Turn-by-Turn availability impacted by some geographic cellular limitations, advisor-assisted routing available.

¹⁰ **At time of print, detailed map coverage is available for most major urban areas of the United States and for certain metropolitan areas of Canada (Vancouver, Calgary, Edmonton, Winnipeg, Windsor, London, Toronto, Ottawa, Montreal, Quebec City and Halifax). Coverage is significantly limited outside these areas. Choose the factory navigation option and you will receive an updated navigation DVD each of the first two years following your delivery.

WHEELS AND TIRES



DEALER AVAILABLE OPTIONS



EXTERIOR COLOURS



INTERIOR COLOURS



DTS ACCESSORIES

The addition of carefully chosen quality accessories can enhance your new DTS's unique style and endow it with an even higher level of luxury. Genuine GM Accessories are designed especially for your DTS and engineered to the highest standards, ensuring excellent fit, finish and functionality. They're covered under the four-year/80,000 km Cadillac Limited Warranty.* They can also be included in your new-vehicle lease or finance agreement through GMAC. Ask your dealer for a complete list of the GM Accessories available for the new 2007 DTS. Or visit gmcanada.com

*Whichever comes first, when permanently installed by the dealer at the time you purchase or lease your new vehicle.



◀ This bright chrome grille adds a distinctive and elegant accent to DTS's contemporary styling.



▲ This fitted vinyl cargo-area mat looks great and helps protect your trunk from damage from water, snow, mud and debris.



▲ Upgrade your DTS's ride, handling and appearance with either of the two available brightly polished 18-inch aluminum alloy wheels.



▲ These fitted all-season vinyl floor mats help prevent snow, salt and mud from soiling your DTS's premium carpeting.

CADILLAC OWNER PRIVILEGES

In addition to an exceptional driving experience, Cadillac ownership brings with it a world-class array of privileges.* The Cadillac Limited Warranty covers all parts and labour costs that may be incurred to correct all defects in material or workmanship.* Cadillac No Charge Scheduled Maintenance* covers the cost of regularly scheduled maintenance. Cadillac Roadside Service provides assistance throughout Canada and the United States should you require towing, fuel delivery, a jump start or help with a flat tire or lock-out situation.* Trip Planning can assist you on road trips with computer-generated maps indicating either the most direct route or the most scenic route to any destination you choose in North America.* Alternative Transportation provides you with shuttle transportation for daily service and an alternate vehicle (or reimbursement for rental or other transportation expenses) for overnight service, whenever your DTS requires scheduled maintenance or repairs covered under the Cadillac Limited Warranty.* Trip Interruption Protection may reimburse you for such incidental expenses as hotel accommodation, meals and auto rental should your trip be interrupted by a repair covered under the Cadillac Limited Warranty.* See your Cadillac dealer for complete details.

*Program in effect for the first 4 years or 80,000 km (whichever comes first) of ownership. Conditions and limitations apply.

ONSTAR

OnStar* uses advanced communications technology to enhance your safety, security and convenience.

OnStar Advisors can provide a wealth of information and perform a variety of diagnostic services. They can also provide assistance in an emergency. No wonder more than 4 million people have become OnStar subscribers and over 12 million calls are made each month on the built-in voice-activated, hands-free system. OnStar and one year of the Directions and Connections Plan are standard on all DTS models. See your Cadillac dealer for more information on plans and services.

*OnStar services require vehicle electrical system (including battery), wireless service, and GPS satellite signals to be available and operating for features to function properly. Not all OnStar features are available on all vehicles. OnStar acts as a link to existing emergency service providers. OnStar Hands-Free Calling requires a Hands-Free enabled vehicle, prepaid minutes and existing OnStar service contract. Subscription Service Agreement required.

XM SATELLITE RADIO

What's convinced more than six million people to subscribe to XM Satellite Radio? How about the largest playlist on the planet, with musical genres that span everything from decades to dance, rock to rap and country to classical – broadcasting the most commercial-free music in digital quality sound? Or is it the news, talk, sports and comedy channels – including more than 1,000 NHL games, and all available from coast to coast?* XM has revolutionized radio as we know it. And now you can enjoy XM Satellite Radio in your next General Motors vehicle – GM is the first automaker to offer factory-installed satellite receivers. Ask your Cadillac dealer for more information.

*Includes 3 free trial months beyond which fees apply. Available in 10 Canadian provinces and 48 contiguous United States.



ACQUISITION OPTIONS

In addition to the many exclusive privileges of Cadillac ownership, Cadillac and General Motors of Canada have created a range of supplementary support programs to enhance your ownership experience. Some of these programs assist you in purchasing or leasing the Cadillac of your choice. Others help protect you and your new Cadillac over the long term.

Purchasing & Leasing:

- **GMAC Financing** – On-the-spot financing at your GM dealership*
- **GMAC SMARTLEASE** – A smart alternative to traditional financing*
- **The GM Card** – Eligible cardholders may be able to redeem up to \$3500 in GM Card® Earnings toward the total purchase price or lease down payment on selected vehicles.** For more information on The GM Card please call 1-800-461-3279.

Additional Ownership Programs:

- **GM Protection Plan (GMPP)** – the only extended services contract backed by the resources and commitment of General Motors, GMPP may be purchased at the time of your sale or lease, or subsequently during the Base warranty period.**

Information Resources:

You can obtain more information about Cadillac vehicles and programs from your Cadillac dealer, or at these information centres:

- The GM website at gmcanada.com
- The Cadillac Contact Centre at 1-888-446-2000 or (1-800-263-3830 for TDD users).

*Subject to eligibility. **Conditions and limitations apply.

A word about this brochure

Some of the equipment shown or described throughout this brochure may be available at extra cost. We have tried to make this brochure comprehensive and factual. We reserve the right, however, to make changes at any time, without notice, in prices, colours, materials, equipment, specifications, models and availability. Specifications, dimensions, measurements, ratings and other numbers in this brochure and other printed materials provided at the dealership or affixed to vehicles are approximates based upon design and engineering drawings and prototypes and laboratory tests. Your vehicle may differ due to variations in manufacture and equipment. Since some information may have been adapted since the time of the printing, please check with your Cadillac dealer for complete details. General Motors of Canada Limited reserves the right to lengthen or shorten the model year for any product, for any reason, or to start and end model years at different times.

A word about assembly

Cadillac vehicles are equipped with engines and components produced and assembled by different operating units of General Motors, its subsidiaries and suppliers and these engines and components may change or be obtained from different sources from time to time. All such engines and components are approved for use in Cadillac vehicles. Certain equipment ordered may be unavailable at the time of assembly and we suggest that you verify that your vehicle includes the equipment you ordered, or if there are changes, that they are acceptable to you.

A word about corrosion

Cadillacs are designed and built to resist corrosion. All body sheet metal components are warranted against rust-through corrosion for 6 years. There is no deductible for rust-through repairs. Application of additional rust-inhibiting materials is not required under the corrosion coverage and none is recommended.

Trademarks

The marks appearing in this Cadillac DTS brochure including, but not limited to: General Motors, GM, the GM Canada emblem, the GM Canada website address, GM Goodwrench, Cadillac, the Cadillac badge, Cadillac Owner Privileges, Cadillac Roadside Service, DTS, and their respective logos, emblems, slogans and vehicle model names and body designs; and other marks such as IntelliBeam, Magnasteer, Magnetic Ride Control, Northstar, RainSense, SMARTLEASE, Solar-Ray, StabiliTrak and Twilight Sentinel are trademarks of General Motors Corporation and/or General Motors of Canada Limited, its subsidiaries, affiliates or licensors.

GMAC is a registered trademark of the General Motors Acceptance Corporation.

OnStar, the OnStar logo and the OnStar button are registered trademarks of the OnStar Corporation.

PASS-Key III+ and TheftLock are registered trademarks of Delphi Automotive Systems.

Bose is a registered trademark of the Bose Corporation.

Radio Data System (RDS) is a registered trademark of the U.S. National Association of Broadcasters.

The XM name and related logos are registered trademarks of XM Satellite Radio, Inc.

Copyright

©Copyright 2006 General Motors of Canada Limited. All Rights Reserved. All text, images, graphics, and other materials in this Cadillac DTS brochure are subject to the copyright and other intellectual property rights of General Motors Corporation and/or General Motors of Canada Limited. These materials may not be reproduced, distributed or modified without the express written permission of General Motors Corporation and/or General Motors of Canada Limited.

Printed in Canada, June 2006.



NEW YORK

PARIS

LONDON

TORONTO

SHANGHAI

DUBAI

