



**PONTIAC**  
The Mark of Great Cars.

**1976  
GRAND PRIX**  
Pontiac's classic personal car.



Pontiac's Grand Prix took the personal car market by storm back in 1962. A lot of imitators have followed in its wake.

But Grand Prix is still a recognized leader. Because over the years, Grand Prix has built a solid reputation for classic styling, nimble maneuverability and uncommon comfort.

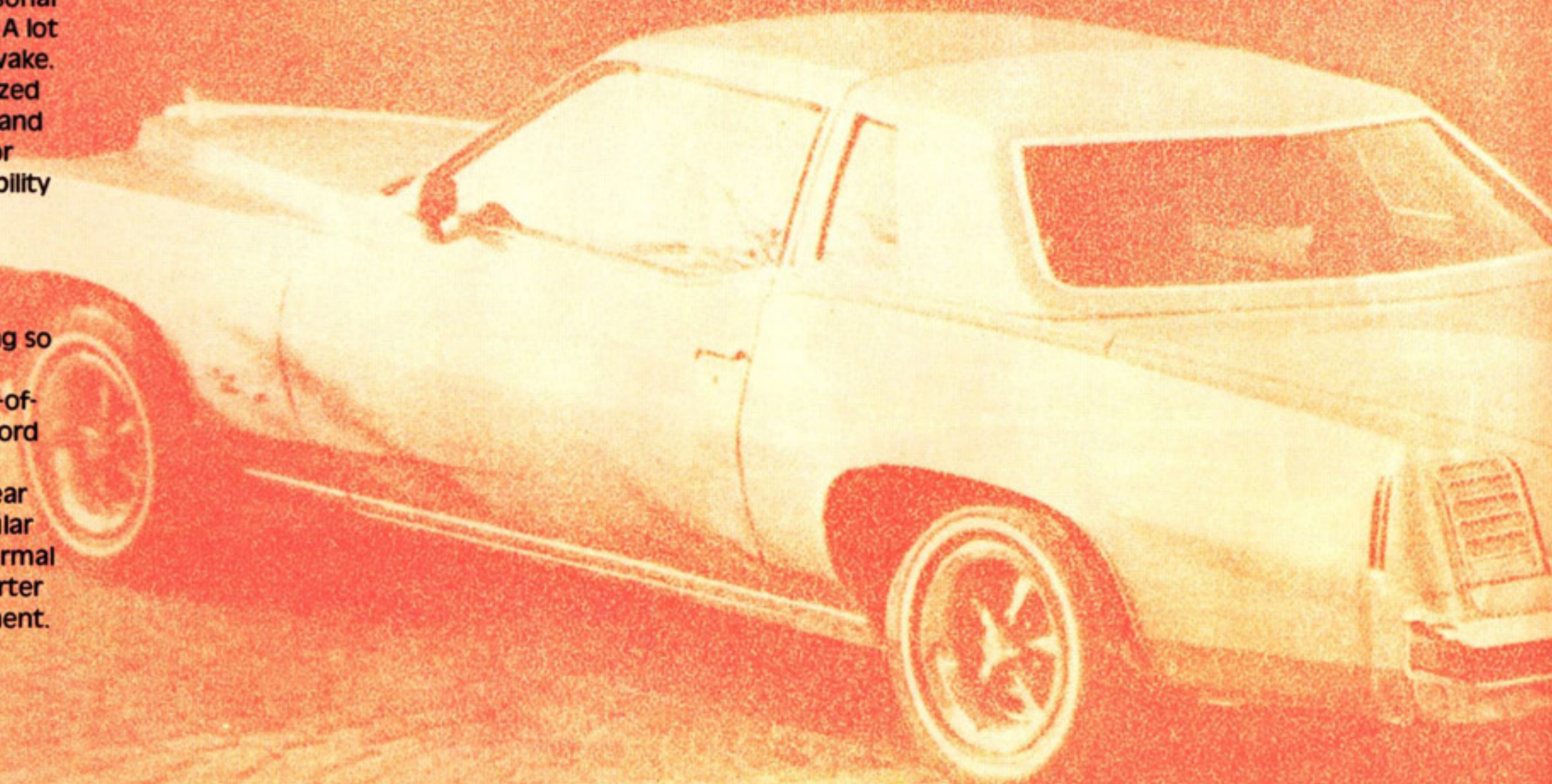
This year, only one thing has changed. Now there's no need to settle for an imitation Grand Prix. Because we've made the real thing so affordable.

In fact, if you can afford a top-of-the-line mid-sized car, you can afford a new 1976 Grand Prix.

You'll get classic styling. This year highlighted by new dual rectangular headlamps. A bold new grille. A formal roofline. Monogrammed rear quarter windows. A stand-up hood ornament. And more.



Grand Prix SJ Hardtop Coupe.



You'll get Grand Prix's kind of nimble maneuverability. A 350 V-8 is standard. As is Turbo Hydra-matic. Variable-ratio power steering. Power front disc brakes. And Pontiac's famed Radial Tuned Suspension.

And you'll get Grand Prix's kind of uncommon comfort. The full-width notchback seat is upholstered in your choice of fine cloth or supple Morrokide.

The cockpit-like instrument panel makes every gauge, every indicator, every control easy to see and reach. There's even a custom cushioned steering wheel, thick cut-pile carpeting and a European-style column-mounted headlamp dimmer switch.

Prefer deep-contoured, lateral support bucket seats? And a center console with a floor-mounted shifter? And a 400 V-8? No problem. You'll get them all if you order the new Grand Prix SJ. It's one very sporty model.

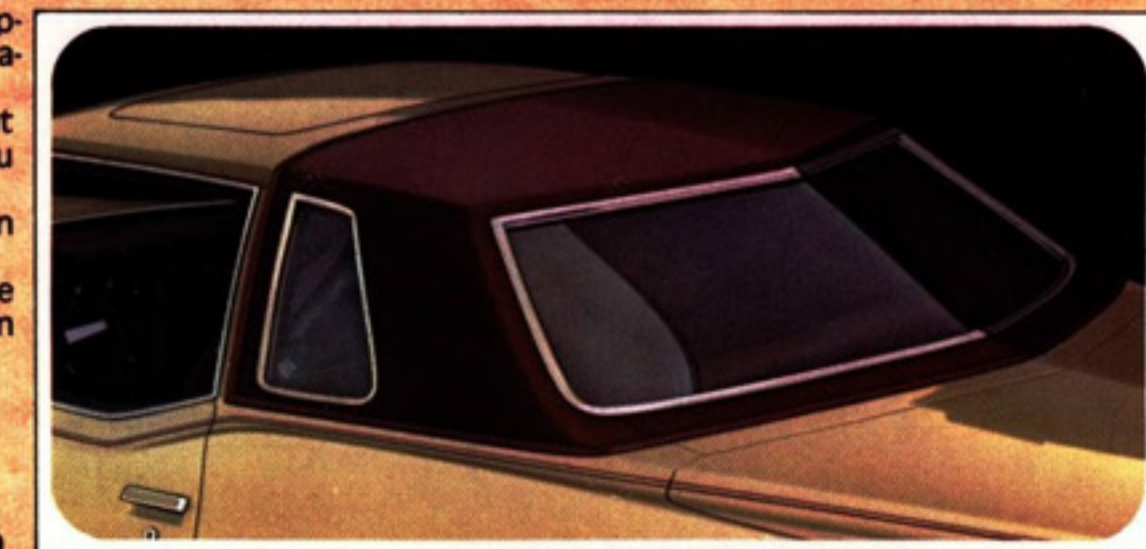
Or maybe you should go to the plushest Grand Prix ever. To the Grand Prix LJ.

The LJ has a distinctive two-tone color treatment with special body accent stripes. There's a full or landau vinyl top. Or you can order a padded landau top.

The velour upholstery is an absolute knockout. Or you can order the genuine leather that's available.

Either way, it's seating that would have made Duesenberg proud.

Grand Prix. Grand Prix SJ. Grand Prix LJ. Don't settle for an imitation when now you can afford the real thing.



A. A leather-bound classic. Grand Prix LJ's bucket seats upholstered in available genuine leather. Shown in mahogany—also available in buckskin.

B. Stand by for action! Grand Prix's wraparound instrument panel and custom cushion steering wheel is where you run the show from.

C. Grand Prix's notchback full-width cloth interior. Shown in firehorn—also available in blue and black.

D. How can you top a new Grand Prix? With a landau-style cordova top. Standard on Grand Prix LJ. Available on Grand Prix and Grand Prix SJ.

Shown on the cars on these pages are some of the options and accessories offered by Pontiac at extra cost.

# FACTS AND FIGURES

## GRAND PRIX

### MODELS

Grand Prix 2-Door Hardtop Coupe,  
Grand Prix SJ 2-Door Hardtop Coupe,  
Grand Prix LJ 2-Door Hardtop Coupe.

### POWER TEAMS

Standard Grand Prix engine: 350-cu.-in.  
2-bbl. V-8. 350-cu.-in. 4-bbl. V-8  
(Calif. only).

Standard Grand Prix SJ and LJ engine:  
400-cu.-in. 4-bbl. V-8.

Available engines:

400-cu.-in. 2-bbl. V-8,\*

400-cu.-in. 4-bbl. V-8,

455-cu.-in. 4-bbl. V-8.

Standard transmission: Turbo Hydra-  
matic.

\*Not available in California.

### STANDARD INTERIOR FEATURES

#### Standard Grand Prix Features

Notchback full-width seat with center  
armrest in cloth and vinyl or all-vinyl.  
All-foam construction front and rear  
seats. Nylon-blend, cut-pile carpeting  
with carpeted lower door panels. Door  
pull straps. Custom cushion steering  
wheel. Column-mounted headlamp dim-  
mer switch. High-low ventilation. Elec-  
tric clock. Instrument panel and door  
appliques with the look of rosewood.  
Acoustical insulation. Easy-to-service  
instrument panel with plug-in com-  
ponents. Luggage compartment mat.  
Instrument panel, steering wheel and  
column all color coordinated to interior.  
Inside hood latch release.

#### Special Grand Prix SJ Features

Deep contour front bucket seats with  
cloth and vinyl or all-vinyl trim. Inte-  
grated console. Custom seat and shoul-  
der belts. Instrument panel, ash tray,  
cigar lighter and glove compartment  
lamps. Custom trim pedal plates. Added  
acoustical insulation. Trunk compart-  
ment carpeting, sideboards and lamp.

#### Special Grand Prix LJ Features

Velour interior trim. Thick cut-pile car-  
peting. Rally gauge cluster. Interior rear  
quarter courtesy lamps. Spare tire cover  
and trunk trim in black velour.



Grand Prix's hood ornament may not be as famous as the "Flying Lady," but give it a few years.

### STANDARD EXTERIOR FEATURES

#### Standard Grand Prix Features

Dual rectangular headlamps. Stand-up  
hood ornament. Formal roofline with  
monogrammed rear quarter windows.  
Long doors for easy rear seat entry.  
Concealed wipers. Body-colored door  
handle inserts. Hubcaps. Bright mold-  
ings on windshield, quarter window,  
rear window, windowsill, hood and  
wheel openings. Bright drip molding on  
roof. Front and rear bumpers with energy-  
absorbing mounting systems. Front and  
rear protective rubber bumper strips.

#### Special Grand Prix SJ Features

Distinctive Grand Prix deluxe wheel  
covers. Wide rocker panel moldings.

#### Special Grand Prix LJ Features

Two-tone paint. Body accent stripes.  
Cordova top (full or landau).

### STANDARD CHASSIS FEATURES

Variable-ratio power steering. Power  
brakes (front discs, rear drums). Radial  
Tuned Suspension including: GR78-15  
GM specification steel-belted radial  
tires, front stabilizer bar, firm shocks,  
4-wheel computer-selected coil springs  
and more. Perimeter frame. Power-flex  
fan. High Energy Electronic Ignition  
and catalytic converter which requires  
unleaded fuel.

### DIMENSIONS (inches)

Overall length	212.7
Overall width	77.8
Wheelbase	116.0
Track, front/rear	61.6/61.1
Head room, front/rear	37.2/36.9
Leg room, front/rear	42.5/33.5
Shoulder room, front/rear	58.8/58.1
Hip room, front/rear	54.9/52.7

### CAPACITIES

Fuel tank—25 gals.

Cooling system—22.1 qts.

Oil, less filter refill—5.0 qts.

### POPULAR EQUIPMENT AVAILABLE

Full or landau-style cordova top. Sun-  
roof. Leather seats. Rally gauge instru-  
ment cluster with tachometer. Power  
windows. Electric door locks. AM/FM  
stereo radio. Automatic temperature  
control air conditioning. Remote control  
sport mirrors. Reclining passenger  
bucket seat. Custom sport steering  
wheel. Custom finned wheel covers,  
Rally II or Honeycomb wheels. Cruise  
Control. Rally RTS Handling Package  
with GR70-15 tires. Controlled cycle  
windshield wiper system.

### GRAND PRIX SAFETY FEATURES

#### Occupant Protection

Seat belts with pushbutton buckles for all  
passenger positions. Two front combination  
seat and inertia reel shoulder belts for driver  
and right front passenger (with reminder light  
and buzzer). Energy-absorbing steering column.  
Passenger-guard door locks. Folding seat-back  
latches. Energy-absorbing padded instrument  
panel and front seat-back tops. Contoured  
windshield header. Thick laminate windshield.  
Safety armrests. Safety steering wheel. Cargo-  
Guard. Contoured roof inner panel. Safety  
door latches and hinges.

#### Accident Prevention

Side marker lights and reflectors. Parking lamps  
that illuminate with headlamps. Four-way  
hazard warning flasher. Backup lights. Lane-  
change feature in direction signal control.  
Windshield defrosters, washers and dual-speed  
wipers. Wide-view inside day/night mirror  
(vinyl-edged, shatter-resistant glass and de-  
flecting support). Outside rearview mirror. Dual  
master cylinder brake system with warning  
light. Safety Starter Switch. Dual-action safety  
hood latch.

#### Anti-Theft

Anti-theft ignition key reminder buzzer. Anti-  
theft steering column lock.

Shown on the cars and described in this catalog  
are some of the many options and accessories  
offered by Pontiac. They're available at extra  
cost and well worth it in driving comfort and  
convenience. Pontiac Motor Division of Gen-  
eral Motors Corporation reserves the right to  
make changes at any time, without notice, in  
colors, equipment, specifications, prices and  
models—and also to discontinue models. The  
right is also reserved to change any specifica-  
tions, parts or equipment at any time without  
incurring any obligation to equip same on cars  
built prior to date of such change.

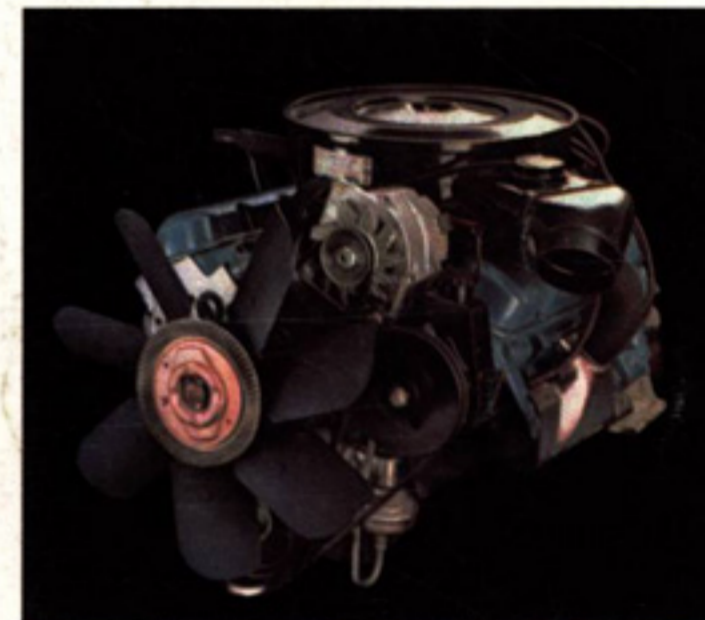
Pontiac Motor Division, General Motors Cor-  
poration, One Pontiac Plaza, Pontiac, Michigan  
48053.



Grand Prix's available all-Morrokide 60/40 full-  
width seat. Seats three with the center armrest  
up, two with it down. Shown in white—also  
available in buckskin and firethorn.



A little something for the bucket brigade.  
Grand Prix SJ's standard cloth bucket seats.  
Shown in firethorn—also available in black and  
buckskin.



Pontiac's 350 V-8 is trustworthy, obedient, ef-  
ficient, clean and standard on Grand Prix.



Grand Prix's standard column-mounted di-  
mer switch lets you flash your brights or  
change from low to high beam with the flick  
of a finger.

