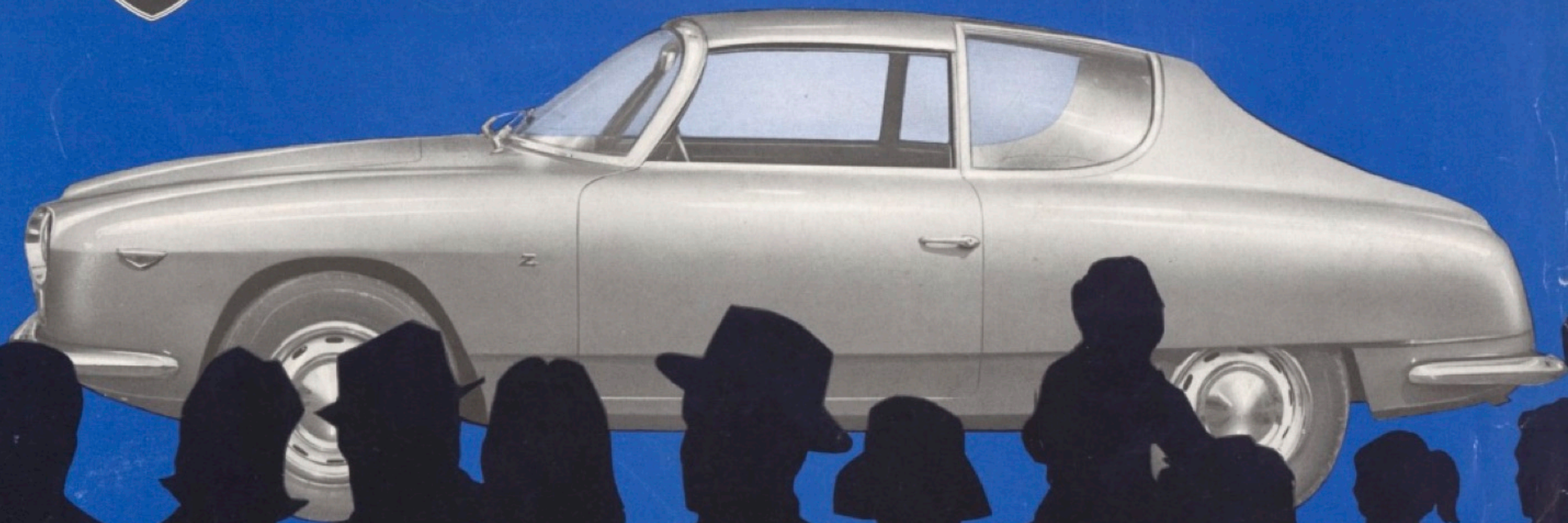
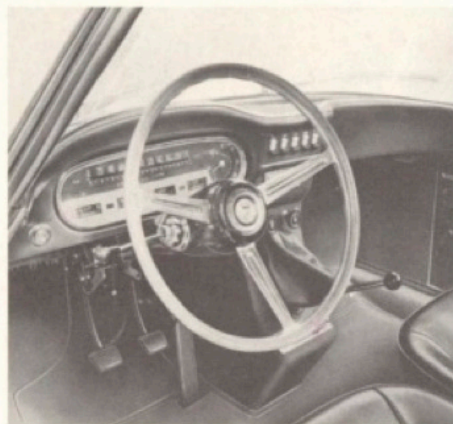
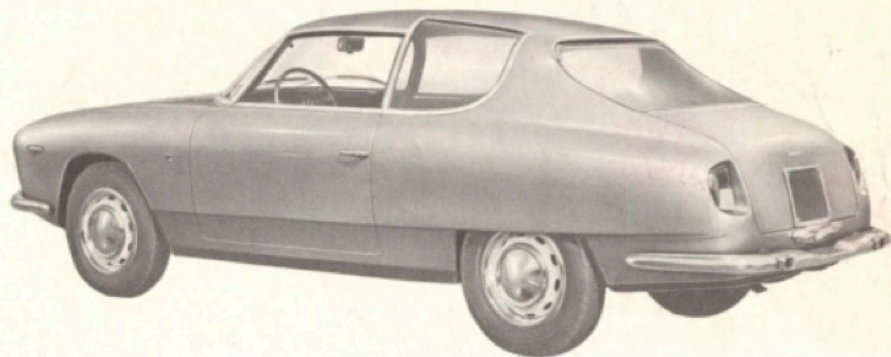


# LANCIA FLAVIA SPORT 1.8





# FLAVIA SPORT



The original lines designed for better aerodynamic penetration, the compactness of a sports car, the aesthetic solutions adopted, make this car an example of functionality and class.

**ENGINE** - Type: 815.500 • No. of cylinders: 4, horizontally opposed • Bore and stroke: 88 x 74 mm • Cubic capacity: 1800 cmc. • Compression ratio: 9 : 1 • Max. R.P.M.: 5800 • Maximum power: 100 HP DIN • Maximum torque: 16,6 mkg at 3000 R.P.M. • Cooling system: water with pump and radiator • Fuel system: electric pump • Lubrication system: gear pump - filter and radiator • No and type of carburetors: 2 SOLEX C 35 P II, 2 inverted compound.

**TRANSMISSION** - Clutch: dry single plate • Gearbox: 4 synchromesh forward speeds and reverse • Axle ratio: 11/42 • Front-wheel drive • Rims 4½ J x 15" • Tyres: Michelin 165 - 15 X.

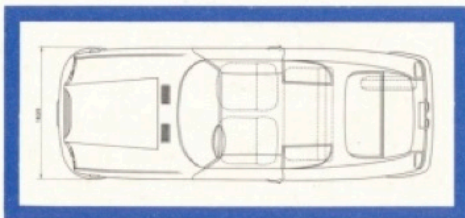
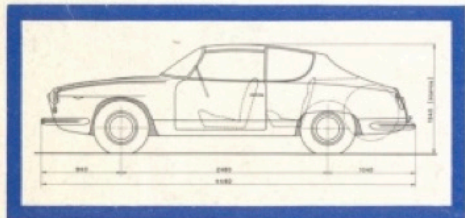
**ELECTRICAL EQUIPMENT** - Voltage: 12 V (grounded negative) • Battery: 12 V - 42 Ah • Spark plugs: CHAMPION N 4.

**CHASSIS AND BODY** - Service brakes: disc type on the four wheels - hydraulic control, with pedal and vacuum servo-unit acting on the front and rear wheels through independent circuits • Parking brake: mechanical on the rear wheels, hand lever control • Front

suspension: independent-with upper and lower wishbones, transverse leafspring and stabilizer bar • Rear suspension: rigid axle with longitudinal leaf-springs and stabilizer bar • DE CARBON oleopneumatic shock absorbers front and rear • Wheelbase: 2,480 m (97.62 ins) • Min. turning circle: 10,260 m (403.93 ins) • Front track: 1,300 m (51.18 ins) • Rear track: 1,280 m (50.39 ins) • Overall length: 4,460 m (175.59 ins) • Overall height (unladen): 1,340 m (52.75 ins) • Ground clearance (laden): 0,115 m (4.52 ins.) • No of seats: 4 • Type of body: coupé 2 doors.

**PERFORMANCES AND WEIGHTS** - Max. speed: 180 K.P.H. (113 M.P.H.) • Max. superable gradient: 40% • Kerb weight: 1060 Kg (2,332 lbs) • Max. weight (fully laden) 1,380 Kg (3,036 lbs) • Fuel consumption (CUNA regulations): 10,4 lt/100 km.

**CAPACITIES** - Fuel: 48 l (10.58 Imp. G.) (high-octane petrol; min. 92 oct.) - Oil: (engine) 6,1 kg; 7,1 lt. (1.56 Imp. G.; 1.87 U.S. G.) (gearbox and propelling unit); 1,8 kg (0,4 Imp. G.; 0,5 U.S. G.) • Water: 6,7 lt. (1.47 Imp. G.; 1.76 U.S. G.).



Engine complete with ventilator, air filter, dynamo, exhaust.  
Barometric pressure 760. Temper. 59 FAHR.

