

X F







XF

THE SPORTS SALOON

Sleek, dynamic, daring, XF is a fusion of sports car styling with outstanding luxury saloon comfort. XF's inspired engineering has won over one hundred international awards. It has proved itself the game-changer in the world of automotive design. More than a machine, XF combines Jaguar's renowned flair for style and luxury with a genius for technological innovation, providing an instinctive and rewarding driving experience that other sports saloons can only aspire to. It looks alive, it feels alive.

To build your new XF visit the configurator at jaguar.co.uk/build-yours.

SE | SE BUSINESS | LUXURY | R-SPORT | PREMIUM LUXURY | PORTFOLIO | DIESEL S | XFR | XFR-S

VEHICLE SHOWN: XF PORTFOLIO IN POLARIS WHITE



MOVING DESIGN

With its glowing Bi-function HID headlamps, outlined with crystal white daytime running LEDs, and its toned bodyshape, XF always looks ready for action. Its primed, nose-down, attitude, power vents and aerodynamic lines are more than an athletic pose, they've been precision-honed through exhaustive design testing to perfect XF's air flow efficiency. Each curve and contour has been refined to produce top aerodynamic performance, helping to improve fuel consumption and emissions. Beautiful, intense, potent; first XF captures your imagination and then your heart.



VEHICLE SHOWN ABOVE: XF PORTFOLIO IN POLARIS WHITE
VEHICLE SHOWN LEFT: XF R-SPORT IN POLARIS WHITE





VEHICLE SHOWN: XF PORTFOLIO IN POLARIS WHITE

THE XF COLLECTION



XF

POWER: 163PS, 200PS, 240PS & 340PS



XF R-SPORT

POWER: 163PS, 200PS AND 240PS



XF 3.0 DIESEL S

POWER: 275PS



Refined power and truly effortless modern sporting style – the XF collection has it all. Choose your perfect balance between performance, economy and lifestyle from the XF’s five distinct characters. Discover XF’s stylish design, contemporary luxury, impressive fuel economy and performance, with innovative technologies and Jaguar’s most efficient diesel engine ever – the 2.2 163PS Diesel engine with 129g/km CO₂ emissions. Not only do you enjoy a dynamic driving experience, the low CO₂ emissions and excellent fuel economy help to reduce your running costs and vehicle taxation. New to the range is XF R-Sport, which combines unique, assertive R-Sport body styling and interiors with Jaguar performance and outstanding economy.

The XF Diesel S delivers a stunning 275PS performance with the same fuel economy as the 3.0 240PS diesel engine with Aerodynamic Enhancements as standard, performance interior-styling and Adaptive Dynamics for a heightened dynamic experience.

VEHICLE SHOWN: XF IN POLARIS WHITE

VEHICLE SHOWN: XF R-SPORT IN ULTIMATE BLACK

VEHICLE SHOWN: XF DIESEL S IN DARK SAPPHIRE

XFR 5.0 LITRE SUPERCHARGED
POWER: 510PS



XFR-S 5.0 LITRE SUPERCHARGED
POWER: 550PS



You can opt for even greater levels of performance, with a choice of three supercharged petrol engines. The 3.0 litre V6 340PS petrol engine is a perfect match to XF's assertive on-road presence and muscular body enhancements. XFR stands out, with sculpted front air intakes, Gloss Black lower valance and quad exhausts and 5.0 litre V8 510PS engine. XFR-S has a 5.0 litre petrol engine producing 550PS and 680Nm for a top speed of 186mph and awe-inspiring acceleration of 0-60mph in 4.4 seconds. It is the Jaguar sports saloon taken to the extreme.

VEHICLE SHOWN: XFR IN ITALIAN RACING RED

VEHICLE SHOWN: XFR-S IN FRENCH RACING BLUE



COMBINING TECHNOLOGIES FOR EFFICIENCY



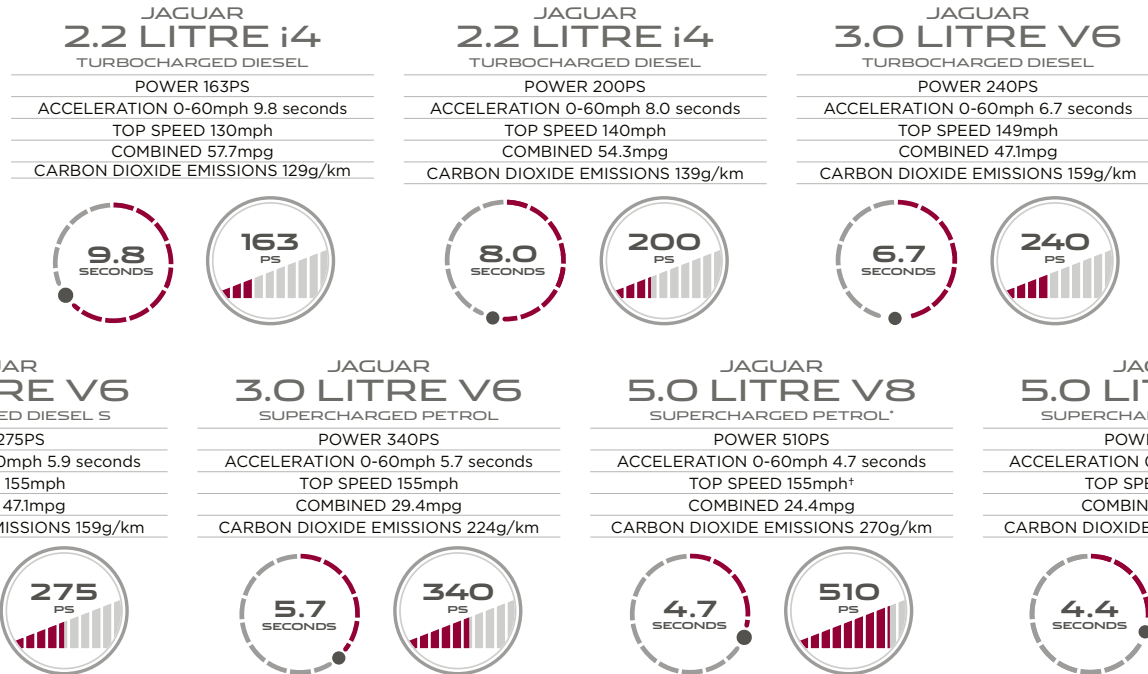
CO₂ EMISSIONS FROM **129G/KM**

UP TO **57.7MPG**

INTELLIGENT STOP/START

XF is renowned for its performance, refined drive and effortless power and offers a choice of engines to suit the needs of every driver and driving style, whether improved fuel economy or power and performance are the priority. The range includes a selection of the latest petrol and diesel units.

Intelligent Stop/Start technology features on all engines delivering improvements in fuel efficiency and CO₂ emissions, whilst Jaguar's latest engines offer a wide range of power and economy. Choose from the 2.2 163PS Diesel with our lowest ever CO₂ emissions of **129g/km** that help to reduce running costs and vehicle taxation to the breathtaking performance of the 5.0 550PS Supercharged petrol engine, with its top speed of 186mph.



The fuel figures provided are as a result of official manufacturer's tests in accordance with EU legislation. A vehicle's actual fuel consumption may differ from that achieved in such tests and these figures are for comparative purposes only. *Available on XFR only **Available on XFR-S only †Top speed is increased to 174mph with Speed Pack

VEHICLE SHOWN: XF PORTFOLIO IN POLARIS WHITE



DRIVING DYNAMICS



ADAPTIVE DYNAMICS

SERVOTRONIC STEERING SYSTEM



Responsive, powerful, driver-focussed, XF utilises a range of technologies to assist, improve and enhance the driving experience. XF's acclaimed handling is produced through combining exceptionally stiff body architecture, aerodynamic form and innovative suspension systems.

XF's **Adaptive Dynamics** system, available on a selection of models, continuously monitors the suspension, varying the damping to suit the conditions, whether cornering, navigating potholes or accelerating on the motorway. The system calculates the appropriate suspension settings 500 times per second, adjusting the dampers to help keep the car as flat, stable and secure as possible.

With its **Servotronic steering system**, XF delivers pinpoint manoeuvrability at low speeds then reduces assistance at higher speeds for confident handling.

VEHICLE SHOWN: XF DIESEL S IN DARK SAPPHIRE

XF R-SPORT



ENGINE AVAILABILITY
163PS, 200PS, 240PS

AERODYNAMIC
BODY STYLING

UNIQUE R-SPORT INTERIOR
WITH PIANO BLACK VENEER

XF R-Sport has all the cutting edge technology, effortless handling and intelligent performance of XF, now combined with even more visual impact. XF R-Sport is more assertive and radiates self-confidence. Its Jaguar sporting lineage is utterly unmistakable too thanks to unique exterior body styling that includes a Sport front bumper, R style side sills and a rear spoiler, as well as new R-Sport badging on the side power vents. Inside, the sporting theme is immediately recognisable with the R-Sport badge on the steering wheel and bright stainless steel pedals; it continues with the Warm Charcoal interior trim, 6 way Bond grain and Suedecloth seats with Dove contrast stitch and the Piano Black veneer.

VEHICLE SHOWN: XF R-SPORT IN LUNAR GREY

 R-SPORT





V6

3.0 LITRE DIESEL S 275PS



SPORT INTERIOR

ADAPTIVE DYNAMICS

AERODYNAMIC ENHANCEMENTS

Tuned to maximise performance, XF Diesel S has Jaguar's most powerful diesel engine. The 3.0 litre Diesel S engine's formidable combination of power and torque takes you from 0-60mph quickly and efficiently in 5.9 seconds, with just 159g/km CO₂. Featuring Jaguar's **Adaptive Dynamics** system which continuously monitors the road and driver input to sharpen and hone its already impressive handling agility. For an even more assertive look the exterior features **Aerodynamic Enhancements** as standard including a restyled front bumper with sculpted lower air intake blades, new rear valance and distinctive side sill extensions. It delivers a superb balance between a comfortable, luxury car ride and sports car handling.

VEHICLE SHOWN: 3.0 LITRE DIESEL S IN DARK SAPPHIRE



VEHICLE SHOWN: XFR IN ITALIAN RACING RED

VEHICLE SHOWN: XFR-S IN FRENCH RACING BLUE

V8

XFR 5.0 LITRE 510PS

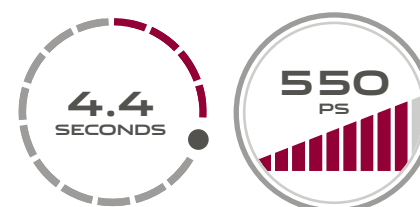


625NM OF TORQUE

ALL-ALUMINIUM QUAD-CAM ENGINE

XFR takes XF performance to another dimension. It accelerates from 0-60mph in 4.7 seconds, XFR intensifies the sporting experience without compromising comfort. It features Jaguar's 5.0 litre V8 Supercharged Petrol all-aluminium quad-cam engine. Intelligent Stop/Start technology and 8-speed electronic automatic transmission helps reduce CO₂ emissions, yet it's powerful enough to produce an impressive 510PS and 625Nm of torque. XFR also offers the opportunity to tailor the car to your taste, as well as for personalisation, with option packs that use many XFR-S derived components.

XFR-S 5.0 LITRE 550PS



BESPOKE R-S SPORTS EXHAUST

HIGH PERFORMANCE BRAKING SYSTEM

XFR-S is Jaguar's most powerful, most agile sports saloon. Ever. Building on XFR's performance, it is even more driver-focussed. XFR-S has a 5.0 litre supercharged engine, tuned to produce 550PS and 680Nm of torque for a top speed of 186mph and awe-inspiring acceleration of 0-60mph in 4.4 seconds. Improved aerodynamics reduce lift by an impressive 68%, keeping the car planted. And this incisive delivery is created by specially designed suspension components help maximise response, reduce roll and boost body control. TracDSC and the High Performance Braking System lets you push the car to the edge of its capabilities for an a expert driving experience.





INTELLIGENT SAFETY OPTIONS



ADAPTIVE CRUISE CONTROL (ACC)

EMERGENCY BRAKE ASSIST (EBA)

ADAPTIVE FRONT LIGHTING

BLIND SPOT MONITOR

XF's safety systems are designed to be anticipatory, utilising an array of innovative technological features to be ready for almost anything and assist the driver in dealing with the unexpected. Standard Dynamic Stability Control (DSC) maximises XF stability when it detects the wheels slipping. Electronic Brake Force Distribution measures load weight and distributes braking force to front and back wheels accordingly.

Adaptive Cruise Control (ACC) on XF uses a radar in the front bumper to monitor the vehicle in front, automatically adjusting XF's speed to maintain a constant distance.

Emergency Brake Assist (EBA) is designed to work with Adaptive Cruise Control to detect the severity of a stopping situation and applies optimum crisis braking forces as necessary.

Adaptive Front Lighting enhances night-time driving. Sensors react to the XF's speed and steering input to deflect the headlamp beams casting light deeper and wider to help give added confidence at night.

Blind Spot Monitor uses radar sensors to remotely cover areas that cannot be seen either directly or in the mirror, and is designed to alert the driver to cars overtaking with an amber warning icon in the external mirrors.

XF's body structure uses 25 different grades of steel. Boron, an element 900 percent stronger than regular mild steel, is used to help create a vertical ring of safety around XF's occupants. A total of eight airbags help to add further protection.

VEHICLE SHOWN: XFR IN ITALIAN RACING RED

CONNECTED: ANYWHERE, EVERYWHERE

A 7 inch colour Touch-screen in the centre console provides multi-function control and displays the three primary functions; audio, climate control and satellite navigation.

SATELLITE NAVIGATION



XF's navigation system gives clear, up-to-date instructions through the Touch-screen. Now with Extended Navigation, it is easier to use than ever and offers more intuitive functionality. Featuring a faster processor and increased memory, route calculation time is reduced and vehicle positioning, due to poor or lost GPS signal, is improved.

CLIMATE CONTROL



Adjust the environment to suit every occupant with dual zone climate control, which includes air particle and odour filtration, humidity control and automatic window de-misting. Your front seats can also be heated or cooled at the touch of a button (if fitted).

> AUDIO CONTROL

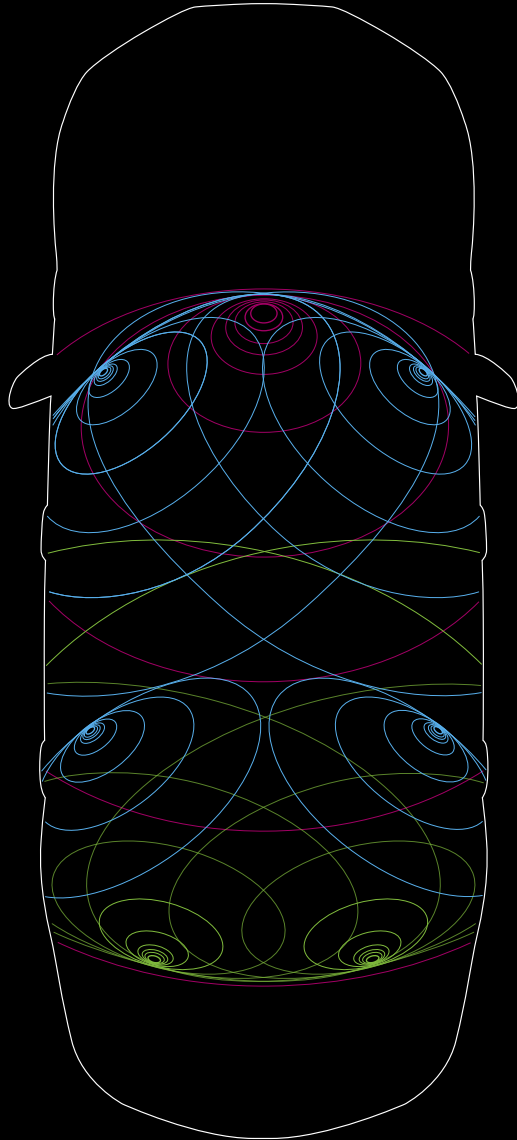


Adjust primary controls such as switching stations via the Touch-screen. The listening experience can be further optimised by adjusting tone, balance and fade.

> BLUETOOTH® CONNECTION



Phone calls can be made using controls on your Touch-screen or steering wheel via your XF's in-built telephone system. Link compatible mobile phones to the hands-free telephone system and even stream audio content wirelessly into your XF's entertainment system, all using Bluetooth® audio streaming technology. To make things even easier, the optional Interactive Voice system – Say What You See – helps the driver to use and interact more easily with XF. It displays voice prompts on the Touch-screen for you to vocally control phone calls, navigation or audio.



SOUNDS ALIVE



MERIDIAN

TRIFIELD™

Turn on XF's superb audio system and the cabin comes alive, delivering 250W of pure audio fidelity, surrounding you with exceptional sound quality.

You can personalise your Jaguar even further to enhance your listening experience. Meridian, the ultimate audio specialists, have designed and created two systems specifically for your XF's unique interior space. Both are engineered to take your sound system to the next level. Meridian's 380 watt Sound System with 11 loudspeakers produces a seminal audio experience while the incredible 825 watt Surround System uses no less than 17 loudspeakers (including subwoofer) to create sound that is just as the artist intended. Meridian achieves this by benchmarking acoustic performance against real musical instruments.

Pioneered by Meridian, Trifield™ technology ensures a perfect central image for each occupant and produces an holistic sound within the cabin to deliver a concert-like experience. With an XF Meridian Audio System everyone can hear the difference.




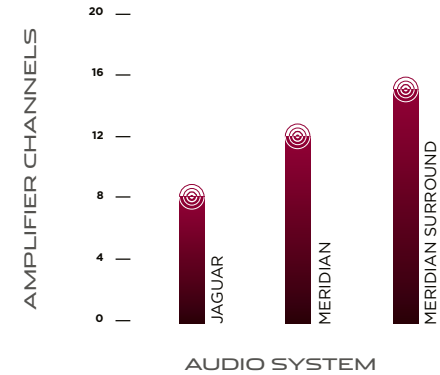
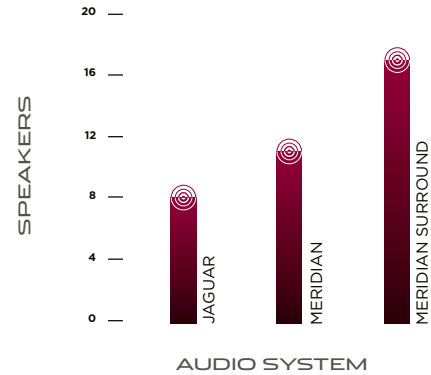
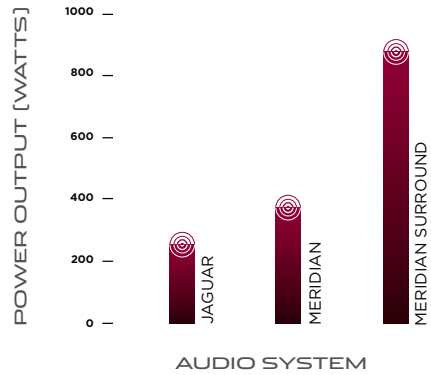
-  Holographic Centre Image
-  Door Waves: Tweeter, Midrange & Bass
-  Surround Sound Waves

Diagram representative of Meridian Surround 825W Audio System.



MERIDIAN



JAGUAR

250W, 8 Speakers, 8 channel amplifier, Audyssey MultEQ Audio Equalisation



MERIDIAN

380W, 11 Speakers, 12 channel class D DSP amplifier, Audyssey MultEQ Audio Equalisation, Dynamic volume control



MERIDIAN SURROUND

825W, 17 Speakers, 15 channel class D DSP amplifier, Audyssey MultEQ Audio Equalisation, 7.1 Surround Sound, Trifield™ technology



INTERIOR SHOWN: XF PREMIUM LUXURY UPPER FACIA IN WARM CHARCOAL WITH WARM CHARCOAL STITCH AND KNURLED ALUMINIUM WITH GLOSS RICH OAK VENEER







ALIVE INSIDE



JAGUARDRIVE SELECTOR™

PHOSPHOR BLUE HALO LIGHTING

Settle in to XF and the softly pulsing 'start' button greets you. Push and the engine engages, XF wakes. Even as you lift your finger, the precision-milled aluminium **JaguarDrive Selector™** rises snugly into the palm of your hand. The engine gently throbs as the air vents, invisible until needed, roll open in unison and cool **Phosphor blue halo lighting** ignites to pick out the interior controls. Let the excitement begin.

Ergonomically optimised, XF's cabin is a space both contemporary and luxurious, created to focus on driver and passenger needs and to excite the senses. Comfort and quality reign supreme with form hugging seats, real wood veneers, Piano Black finishers and aluminium surfaces.

From the premium floor carpet and side trims to the polished stainless steel finishers, there is luxuriousness throughout XF. Thoughtful design encompasses every feature. The steering wheel position adjusts at the touch of a button, along with the seat and mirror. These settings can be memorised for different drivers*. XF welcomes you to the drive ahead.

*Available with optional memory pack



MAX AV

F R

5

AUTO

P R N D S
START
STOP

PERSONALISATION



**EXTERIOR
COLOURS**

LEATHERS

**FACIA AND
VENEERS**

**INTERIOR COLOUR
COMBINATIONS**

**OPTION
PACKS**

XF is available with eight interior trim levels from SE to XFR-S, enabling you to create the XF that's just right for you.



> EXTERIOR COLOURS

From Polaris White to Caviar, from the race inspired colours of Italian Racing Red to British Racing Green, Jaguar offers an outstanding paint spectrum to bring your XF alive. With numerous colour choices in either standard or metallic finish, this is the opportunity to make it your XF.

STANDARD



Ebony

PREMIUM



Dark Sapphire



Osmium



Polaris White



Ultimate Black



Carnelian Red



Stratus Grey



Caviar

¹Available on XFR-S only

For availability please consult your local Jaguar dealer.

RACE INSPIRED



Italian Racing Red



French Racing Blue¹



British Racing Green

SPECIAL



Black Amethyst



Satellite Grey



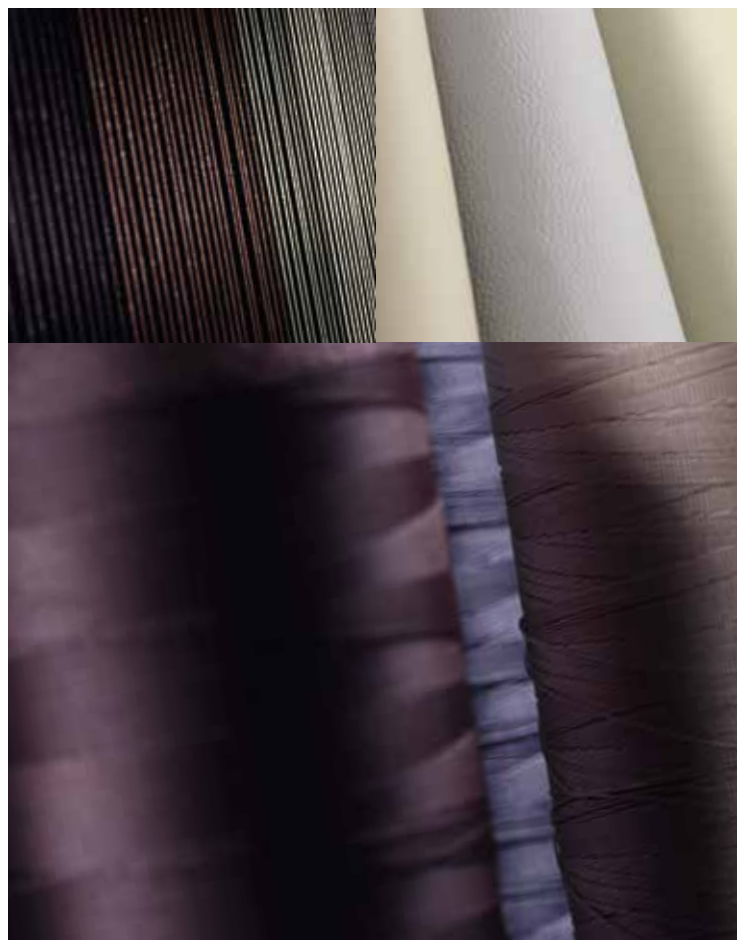
Lunar Grey



Rhodium Silver



Cashmere



INNER BEAUTY

Craftsmanship goes to the very heart of XF and provides unequivocal evidence of Jaguar quality.

Seat leather is available in **3 different grains**: Bond grain, soft grain and carbon soft grain. Leather is sourced from the finest hide suppliers in the UK and Italy ensuring a glove soft and natural feel. All leathers go through an extensive finishing process to protect the material while preserving its unique appearance and character.

Twin needle stitching is applied throughout XF for durability. On selected models, contrast stitching can be combined with seat leathers and door panniers to add a further touch of personalisation. There is also a choice between Carbon Fibre and Piano Black veneers, whilst every XFR-S interior is finished with micro piping on the seats.



> LEATHERS

Warm Charcoal soft grain
(also available in Bond grain and Suede cloth)

Barley soft grain
(also available in Bond grain and Suede cloth)

Dove Bond grain
(also available in soft grain)

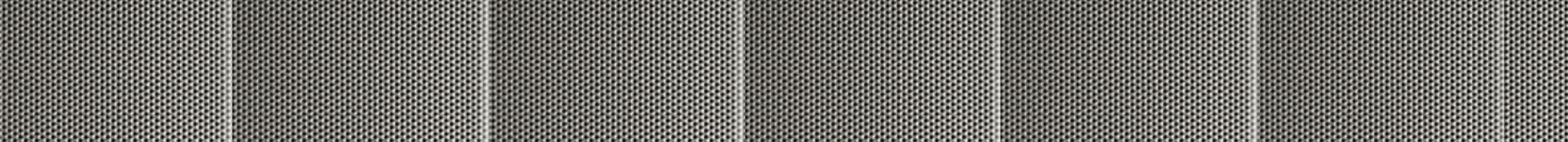


Ivory soft grain

London Tan soft grain

Red Zone soft grain

Warm Charcoal
carbon soft grain
(XFR-S only)



 **FACIA AND VENEERS**

Knurled Aluminium
with Piano Black

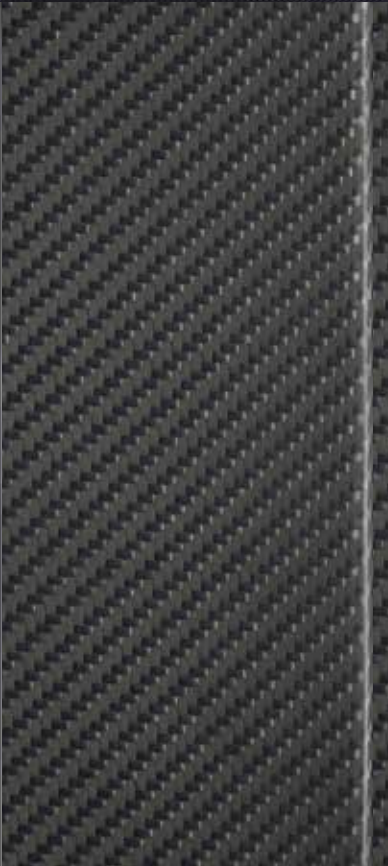
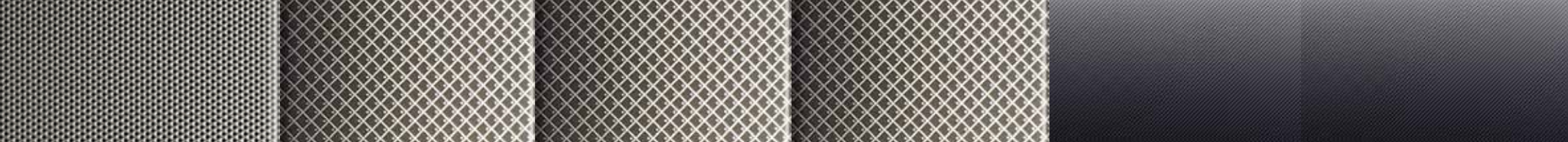
Knurled Aluminium
with Carbon Fibre

Knurled Aluminium
with Gloss Rich Oak

Knurled Aluminium
with Satin Rosewood

Knurled Aluminium
with Gloss Figured Ebony

Knurled Aluminium
with Gloss Burr Walnut



XFR

Knurled Aluminium with
Satin American Walnut

Dark Mesh Aluminium
with Gloss Dark Oak

Dark Mesh Aluminium
with Piano Black

Dark Mesh Aluminium
with Carbon Fibre

XFR-S

Dark Linear Aluminium
with Piano Black

Dark Linear Aluminium
with Carbon Fibre

> INTERIOR COLOUR COMBINATIONS

PERSONALISATION

XFR INTERIOR

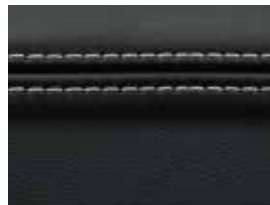


1. SEAT - SOFT GRAIN LEATHER



Ivory

2. UPPER FACIA WITH STITCH



Warm Charcoal with Ivory

3. HEADLINING



Canvas

4. FACIA
5. VENEER



Dark Mesh Aluminium with Gloss Dark Oak

1. Seat trim applies to seats and door trim inserts 2. Upper fascia applies to dashboard, centre console and upper door trims. Contrast stitch applies to upper fascia and centre console. For full fascia and veneer options see page 38.

XF SE AND SE BUSINESS

SEAT - BOND GRAIN
LEATHER/SUEDE/CLOTH
FACINGS

UPPER FACIA WITH STITCH

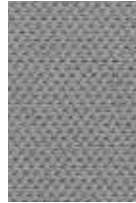
HEADLINING



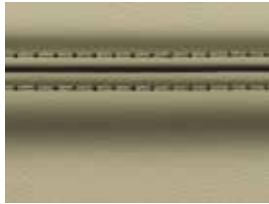
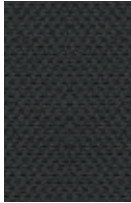
Warm Charcoal



Warm Charcoal
with Warm Charcoal



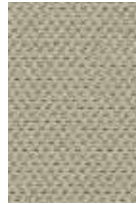
Dove or Jet



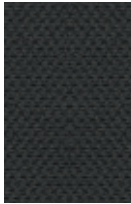
Barley



Warm Charcoal
with Warm Charcoal



Canvas or Jet



XF LUXURY

SEAT - BOND GRAIN
LEATHER

UPPER FACIA WITH STITCH

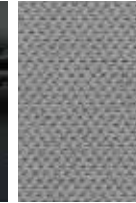
HEADLINING



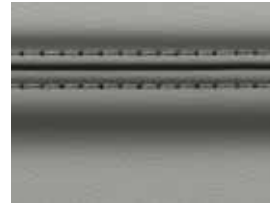
Warm Charcoal



Warm Charcoal
with Warm Charcoal



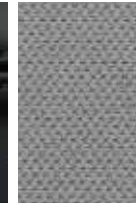
Dove or Jet



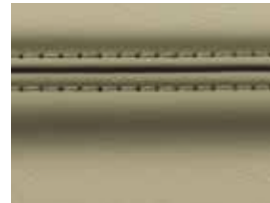
Dove



Warm Charcoal
with Warm Charcoal



Dove or Jet



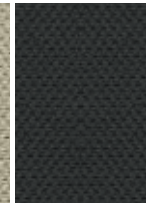
Barley



Warm Charcoal
with Warm Charcoal



Canvas or Jet



XF R-SPORT

SEAT - SUEDECLOTH/BOND
GRAIN LEATHER FACINGS

UPPER FACIA WITH STITCH

HEADLINING



Warm Charcoal with Dove

Warm Charcoal
with Warm Charcoal

Dove or Jet

XF PREMIUM LUXURY

SEAT - SOFT GRAIN
LEATHER

UPPER FACIA WITH STITCH

HEADLINING



Warm Charcoal

Warm Charcoal
with Warm Charcoal

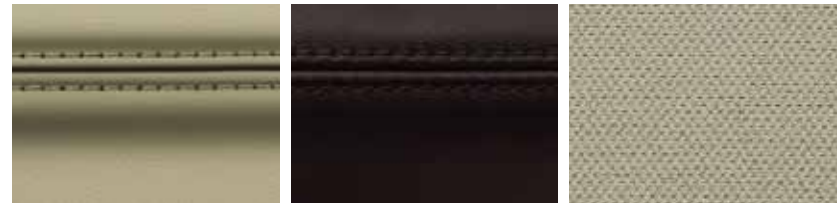
Dove or Jet



Dove

Warm Charcoal
with Warm Charcoal

Dove or Jet



Barley

Truffle with Truffle

Canvas

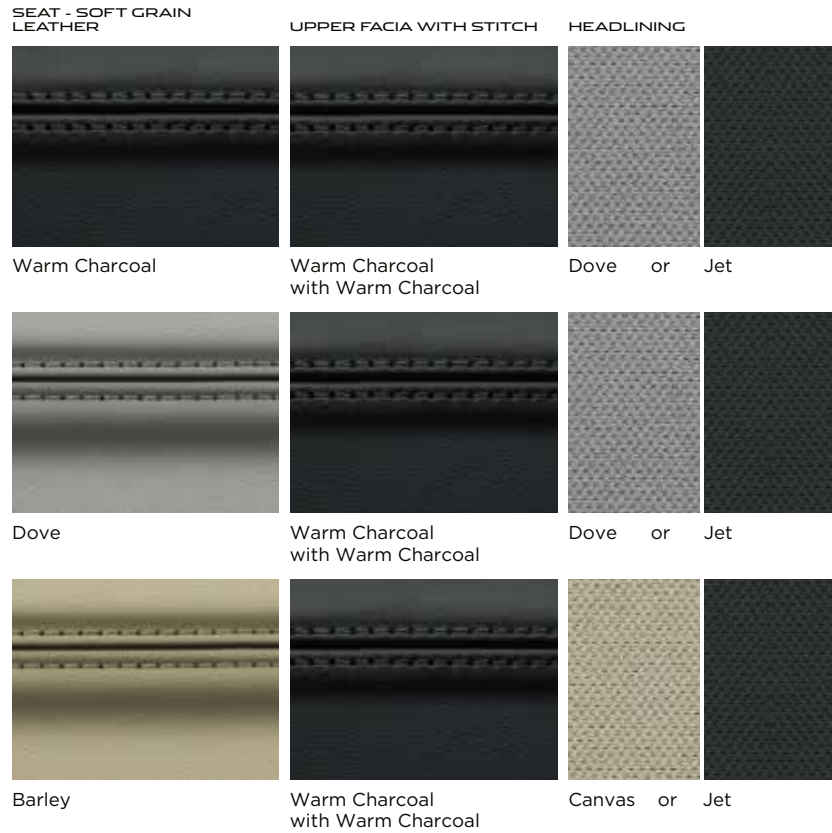


Ivory

Oyster with Oyster

Canvas

XF DIESEL S PREMIUM LUXURY

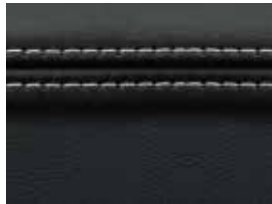


XF PORTFOLIO

SEAT - SOFT GRAIN LEATHER

UPPER FACIA WITH STITCH

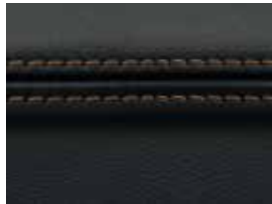
HEADLINING



Warm Charcoal

Warm Charcoal with Ivory

Canvas or Jet



London Tan

Warm Charcoal with London Tan

Canvas or Jet



London Tan

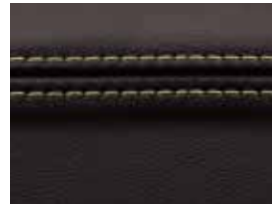
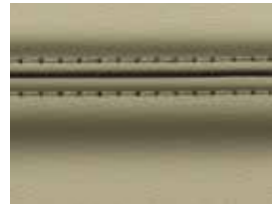
Navy with London Tan

Canvas

SEAT - SOFT GRAIN LEATHER

UPPER FACIA WITH STITCH

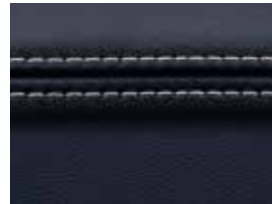
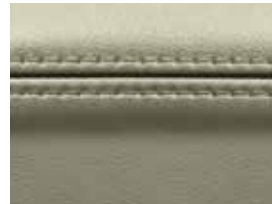
HEADLINING



Barley

Truffle with Barley

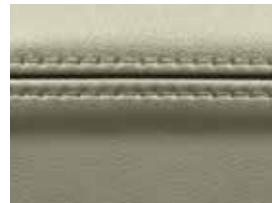
Canvas



Ivory

Navy with Ivory

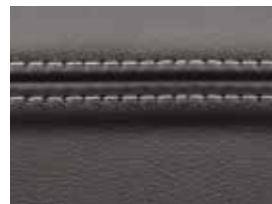
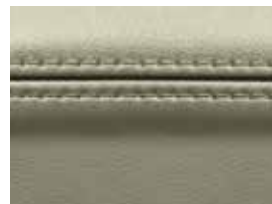
Canvas



Ivory

Truffle with Ivory

Canvas



Ivory

Oyster with Ivory

Canvas

XF DIESEL S PORTFOLIO



XFR

SEAT - SOFT GRAIN LEATHER



Warm Charcoal

UPPER FACIA WITH STITCH



Warm Charcoal with Warm Charcoal

HEADLINING



Dove or Jet



Warm Charcoal



Warm Charcoal with Ivory



Dove or Jet



Red Zone and Warm Charcoal



Warm Charcoal with Red Zone



Dove or Jet



SEAT - SOFT GRAIN LEATHER



London Tan and Warm Charcoal

UPPER FACIA WITH STITCH

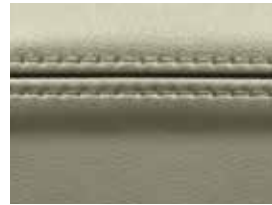


Warm Charcoal with London Tan

HEADLINING



Canvas or Jet



Ivory



Warm Charcoal with Ivory



Canvas or Jet



XFR-S

SEAT - SOFT GRAIN
CARBON LEATHER



Warm Charcoal with
Ivory micro-piping

UPPER FACIA WITH
CONTRAST STITCH
AND MICRO-PIPING



Warm Charcoal with
Ivory

HEADLINING



Jet



Warm Charcoal with
Reims Blue micro-piping



Warm Charcoal
with Reims Blue



Jet

SEAT - SOFT GRAIN
CARBON LEATHER



Warm Charcoal with
Red micro-piping

UPPER FACIA WITH
CONTRAST STITCH
AND MICRO-PIPING



Warm Charcoal with Red

HEADLINING



Jet





BLACK PACK

The optional Black Pack provides the ultimate in assertive styling with a pure Gloss Black finish to the front grille surround and rear signature blade.

In addition, on R-Sport, Diesel S and 3.0 Supercharged models the front bumper blades and vent surrounds are also finished in matching Gloss Black.

Black Pack is available on R-Sport, Diesel S, 3.0 Supercharged and XFR models.





BRING YOUR XF TO LIFE

XF is the ultimate sports saloon. Beautiful yet powerful, XF exploits cutting-edge technology to make handling effortless and driving an unforgettable experience. Sleek outside, sensuous inside, every feature has been tailored to look after you and think ahead for you.

Visit www.jaguar.co.uk to find out more.

Experience XF for yourself – visit your local Jaguar dealer.



IMPORTANT NOTICE

Jaguar Land Rover Limited is constantly seeking ways to improve the specification, design and production of its vehicles and alterations take place continually. Whilst every effort is made to produce up-to-date literature, this brochure should not be regarded as an infallible guide to current specifications, nor does it constitute an offer for the sale of any particular vehicle. Distributors and dealers are not agents of Jaguar Land Rover Limited by any express or implied undertaking or representation.

Comparisons are based on manufacturer's own data and testing.

ENVIRONMENTAL INNOVATION AT JAGUAR

Jaguar is proud to continue the company's tradition with its approach to Environmental Innovation. From the choice of lightweight materials and lean production methods to the efficiency of its engines and designs, Jaguar is committed to operating as a more sustainable business and reducing its overall environmental impact.

Jaguar's flagship XJ model was the first in the company to achieve ISO14040, the international standard for vehicle 'life cycle assessment'. This certification measures the environmental impact of XJ from component material sourcing and manufacturing process, through driving 200,000 km. But that's not all. Every new Jaguar is designed to be 85% recyclable and reusable, in addition to 95% recoverable and reusable, with 10% specifically for energy recovery.

The XJ, F-TYPE and XK's innovative use of lightweight aluminium, which incorporates up to 50% recycled material from the manufacturing process of the body structures, provided considerable performance benefits. This includes improved fuel consumption and less CO₂ emissions associated with lighter structures as well as the dynamic performance inherent in its weight saving design.

Jaguar is committed to reducing dependency on fossil fuels, using fewer resources and creating less waste as part of our approach to sustainability excellence.

The company plan includes 25% reduction targets in operating and tailpipe CO₂ emissions, waste to landfill, logistics efficiencies (15%) and water consumption (10%), all based on per vehicle built since 2007. In addition the manufacturing assembly CO₂ emissions of each Jaguar built in the UK since 2009 is 100% offset. For each tonne of CO₂ emitted in the assembly process, Jaguar invests in projects that reduce an equivalent tonne of CO₂ elsewhere.

Taking into account the company's global sales growth and increased investment in more efficient operating facilities, we are proud to have delivered and in some cases exceeded our Environmental Innovation targets as planned for 2012.

And we are on track to meet our 25% reduction in joint European fleet average tailpipe CO₂ emissions by 2015. Looking forward, we have developed our 2020 vision for sustainable business growth that focuses on continued improvements in tailpipe CO₂ emissions, operational carbon neutrality and zero waste.

To date the company has offset over 6 million tonnes of CO₂, provided over 4,000 direct jobs in 60 emissions reductions projects in 17 countries and improved the lives of over 1 million people in our global cook stoves emissions reduction programme.

But it doesn't stop there. Our manufacturing facilities have been certified to ISO14001 since 1998 and we are credited to Platinum Plus level in the UK's Business in the Community Corporate Responsibility Index.

The Bluetooth® word mark and logos are owned by the Bluetooth SIG, Inc. and any use of such marks by Jaguar Land Rover Limited is under license.

iPod, iPod touch and iPad are trademarks of Apple Inc., registered in the U.S. and other countries.

BlackBerry® is a trademark of Research In Motion Limited and is registered in the U.S. and may be pending or registered in other countries.

Dolby and Pro Logic are registered trademarks of Dolby Laboratories.

Meridian Audio is a registered trademark of Meridian Audio LTD.

'Trifield' and the 'three fields' device are trademarks of Trifield Productions LTD.

Jaguar Land Rover Limited
Registered Office: Abbey Road, Whitley,
Coventry, CV3 4LF, United Kingdom
Registered in England Number: 1672070
jaguar.co.uk



Printed in England September 2013/14MY
JLM/10/02/30/0913



XF

4



JAGUAR

JAGUAR.CO.UK