

# The Audi 200.



The Audi quattro was a technical sensation, and the Audi 100 the car with world-beating aerodynamics. Audi now underlines its supreme position in the top automobile class with the Audi 200 Turbo. The Audi 200 Turbo is of unparalleled technical calibre. Its 134 kW (182 bhp) turbo-charged five-cylinder fuel injection engine includes many of the successful features of the Audi quattro's competition-proved power unit. Brilliant weight-saving body design, exceptionally good aerodynamics, remarkably low fuel consumption for this big car category, an astonishingly comprehensive range

of standard equipment and a unique amount of interior space: the Audi 200 Turbo not only has one of the largest seating areas but also easily the most capacious luggage compartment in its class. And it has high-performance suspension with all the advantages of front-wheel drive. Audi has been developing and perfecting this drive principle more intensively than any other automobile manufacturer for over half a century.

The Audi 200 quattro and the new Audi 200 Avant quattro can now underline their unique position in the luxury car class with all the advantages of all-wheel

drive technology. They have permanent all-wheel drive with two differential locks, to keep you on firm ground winter and summer alike. All four wheels of the Audi 200 quattro and new Audi 200 Avant quattro are permanently driven. So why not experience this superior technology for yourself, along with all the advantages of optimum road grip?

The choice is between the Audi 200 Turbo or Audi 200 quattro/Avant quattro – all of them convincing arguments in favour of a top-class car. See pages 20 – 23 for more information on the Audi 200/Avant quattro.

The Audi 200 Turbo shown here is equipped with the following optional extras: sliding roof with lift-up vent position, headlight cleaning system, radio, seat heating, electrically heated remote-control door mirrors and spoke-design light alloy wheels.

For technical reasons the antilock braking system is not available in certain countries. Please consult your local V.A.G. dealer.

The most powerful argument  
in favour of a top-class car.

**Good-looking.**

With the elegance of advanced aerodynamic design, with its representative air and its exceptionally advanced, luxurious equipment, the Audi 200 Turbo occupies a leading position in the top-class motoring category.

**Fast.**

When it first appeared, no standard production car in this luxury class had ever before achieved an aerodynamic drag coefficient as low as  $c_d = 0.33$ . A sensation-ally aerodynamic body outline, weight-saving construction and the powerful turbocharged power unit combine to make the

Audi 200 Turbo one of the world's fastest saloon cars. With brilliant acceleration to match.

**Modern.**

A microcomputer monitors and controls the principal technical functions on the Audi 200 Turbo with absolute precision. This "Auto-Check" system is based on the very latest technological development. And the in-car computer supplies additional information such as fuel consumption at any given moment, average speed, average consumption and range.

**Spacious.**

Exclusive interior equipment and

trim combine elegance and functional convenience in a most impressive way. Furthermore, the Audi 200 Turbo offers seldom-equalled interior space with exceptional headroom, leg room and width at elbow level even for a saloon of this size, and also by far the largest luggage compartment in its class: 610 litres (measured using 50 mm diameter spheres).

**Wide-ranging.**

Speed is not the only advantage of the Audi 200 Turbo with its lively, powerful engine. Thanks to the outstanding aerodynamics, less power is needed to

propel the car, with the result that overall fuel consumption benefits considerably. It comes as no surprise that the Audi 200 Turbo is one of the most economical cars ever offered in this size group.

**Safe.**

Unique on a car in this category, the superb handling offered by Audi's front-wheel drive layout is backed impressively by its high-performance chassis and suspension. Advanced, high-grade materials maximise passive safety in the body's rigid occupant compartment, combined with extensive impact-



absorbing zones at front and rear. The safety steering column has a disconnecting element, and there is even the antilock braking system as standard equipment, to maintain directional stability and steering control (within certain physical limits) even when the brakes are applied sharply. Needless to say, there are many other worthwhile safety features too.

**Versatile.**

A feature of the Audi 200 Turbo is particularly luxurious, elegant equipment and trim. The high standard of fittings is underlined, for instance, by the Savoy

velour cloth seat upholstery, with four cloth-trimmed hollow-outline headrests. But for those who prefer a rather more sporting note without sacrificing the luxurious overall effect, various optional extras can be specified for the interior: for instance, combined leather and cloth trim to create a sporting impression, or completely real leather interior trim for a truly exclusive effect (real leather centre and side sections of seats, head restraints and steering wheel rim).

**Value for money.**

The Audi 200 Turbo is a splendid example of what a fully-equipped

luxury car should offer. Its standard specification includes metallic paintwork, light alloy wheels, power-assisted steering with a central hydraulic system, an "Auto-Check" monitoring system, in-car computer, electric door window lifts, central locking system, green-tinted heat insulation windows, provision for stereo radio installation with two headphone sockets for rear passengers ('duo-sound') and a motor-driven aerial, together with an antilock braking system and fully automatic air conditioning. Even then, the list is far from complete: many

interesting optional features at extra charge can be specified to suit the personal needs and preferences of the Audi 200 Turbo owner, and enhance the pleasure of travelling in this elegant saloon model still further. They include, for example, automatic transmission, self-levelling suspension, cruise control and many other fascinating items.



Good-looking.

With its air of distinction and elegance, the Audi 200 Turbo confirms its place in the forefront of modern, top-class automobile design. Its styling is based on the creative interpretation of sound aerodynamic principles: the nose



with a backward-sloping radiator grille and wide, integral halogen headlights with additional long-range driving lights. The bumpers, with recessed turn indicators and halogen fog lights, are shaped for minimum drag; the

nose section of the body rises gently to blend into the laminated safety glass windscreen with its green-tinted anti-glare strip, and there are tinted heat-insulating windows all round. Such clarity of outline sets this saloon

apart from the bulk of its contemporaries in style and individuality. This design elegance continues right through to the rear end of the body. The side panels are smooth, with no unnecessary trim; the windows

lie flush with the outer door and body panels, and the striking raised tail section with broad integrated light strip and special underbody spoiler clearly reveal their debt to successful wind-tunnel development.



# Vitality.

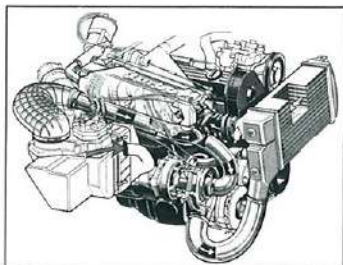
The Audi 200 Turbo is not only attractive, but swift and economical at the same time. This apparent miracle has been achieved by Audi's aerodynamics experts with the aid of aviation design techniques. The extra effort that has gone into window construction is a good example: the glass is flush against the body, the windscreen and rear window bonded to their frames. An entirely new

system has been adopted for the opening side windows: stainless steel guide pins run in rails to keep the glass firm and flush against the body even at high speeds. For another example of detail thoroughness, look at the rain gutters, which are let into the roof to reduce their aerodynamic drag. It is the sum of such details, starting with the new light-alloy wheel and wheel-arch design and ending with the

rear-end underbody spoiler, which keeps the airflow over the Audi 200 Turbo smooth and free from drag and makes the styling so timelessly elegant. The result: a  $c_d$  factor of only 0.33, a supremely low drag coefficient for a series-production saloon in this class. And one of the reasons why the Audi 200 Turbo with 134 kW (182 bhp) turbocharged engine is also one of the world's fastest cars. But



this is not the Audi 200 Turbo's only advantage; it is also one of the most economical cars in the top division, with an almost unbelievably low fuel consumption for this class of car, as test reports have repeatedly confirmed. Almost incredible, considering the brilliant performance and high top speed which the Audi 200 Turbo can offer. This turbocharged power unit incorporates many competition-proved fea-



tures direct from the Audi quattro's engine. It represents a brilliant combination of modern

technologies: a five-cylinder spark-ignition unit with the relatively high compression ratio of 8.8 to 1, mechanical fuel injection, charge air intercooler, liquid-cooled exhaust-driven turbocharger, all-electronic ignition with anti-knock control, overrun fuel shutoff, cylinder filling control, air jacketed injectors and idle-speed mixture control for a particularly low idle speed. The Audi 200 turbocharged

engine is not only notable for its much-reduced fuel consumption and its extra urge compared with a normally-aspirated engine, but also retains excellent flexibility and pulling power over the entire engine-speed range. Its smoothness, together with its responsive and abundant flow of power, need fear no comparisons.



# Modern.

The Audi 200's fascia and instrument panel are clearly and neatly laid out. Form has been effectively combined with function in the car's interior too, for harmonious continuity with the body styling principles. Information is available at a glance, controls are within immediate reach. The "Auto-Check" system, controlled by micro-



computer, is a miniature technological miracle which monitors important functions and displays faults with absolute precision, so that the driver can take the necessary action: low beam headlights and rear lights, state of battery charge, windscreen washer fluid level, fuel level in the tank, operating pressure and fluid level in the central hydraulic

system, brake fluid level, engine oil pressure, coolant temperature, brake lights and front brake pad wear. The "OK" signal comes on only if all these items are in working order, as a sign that you can start your journey safely. The in-car computer supplies additional information such as journey time, average fuel consumption, average speed, range

and current fuel consumption. The electronically-controlled, fully-automatic air conditioning system with three-stage blower, footwell outlets and adjustable direct outlet nozzles for rear seat occupants is designed to maintain a largely constant, non-fluctuating temperature throughout the car. Airflow rate, air supply direction and temperature

can all be selected independently. The temperature range stretches from 15° C to 32° C, and temperatures are controlled automatically between 18° C and 29° C. The pushbutton controls are clearly laid out, with illuminated symbols. Through-flow ventilation is provided with stale air extraction close to the rear bumper.



# Luxurious.

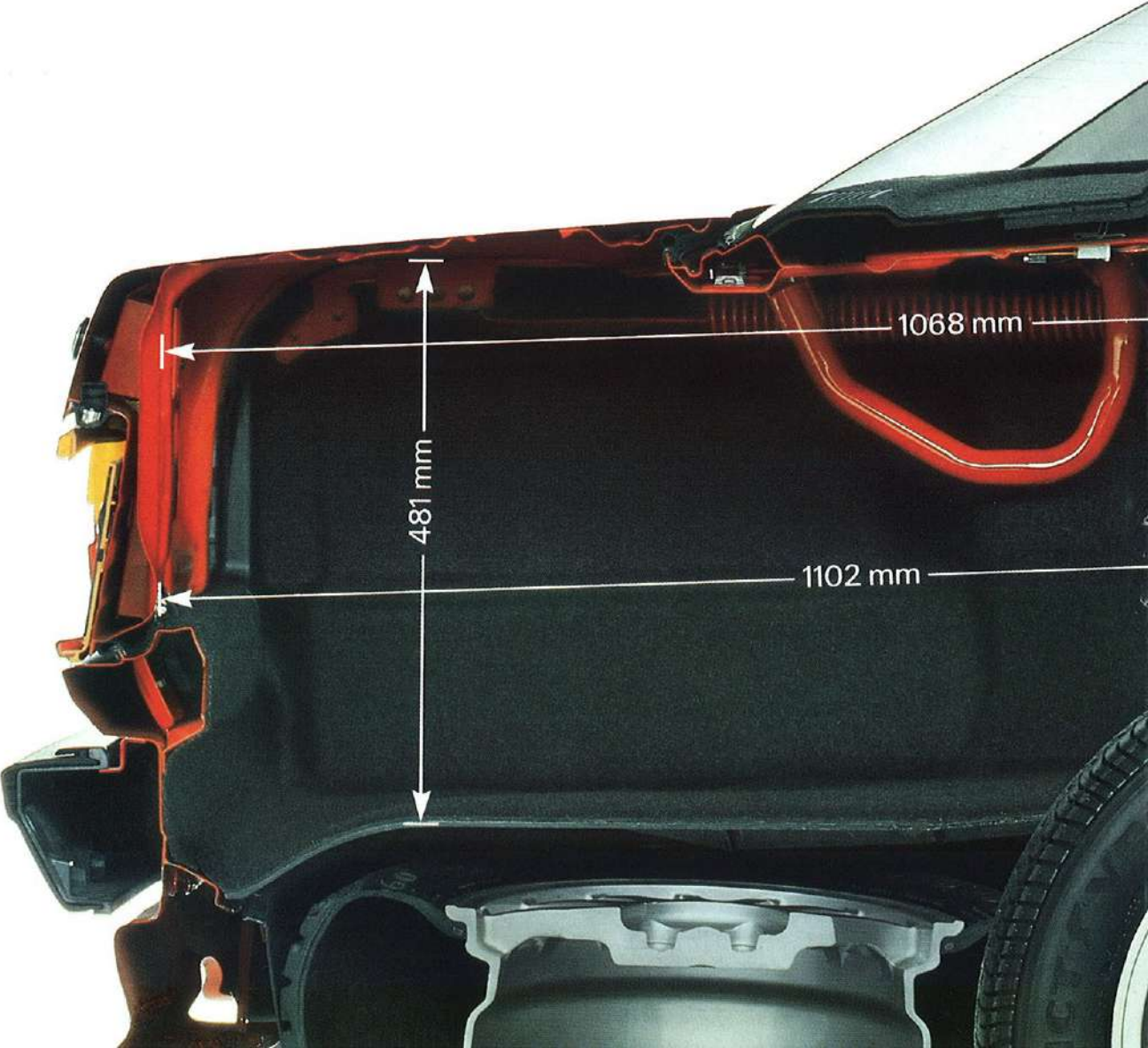
Space is something else the Audi 200 Turbo can offer in abundance. Seldom has a car in this class provided such comfort, such ample headroom, legroom and width at elbow height. The seating area is an impressive  $2.81 \text{ m}^2$  ( $30.2 \text{ ft}^2$ ), a figure that reflects the whole status and character of this car.



The seats themselves provide excellent lateral support and are upholstered with fabrics of the highest quality, in harmony with the elegant luxury that is the Audi 200 Turbo's style.



Spacious.





The Audi 200 Turbo is a car whose fundamental approach is to provide more than the norm in every respect. And certainly more than is generally expected of even a top-class car. Yet the Audi 200 Turbo's pedigree quality is not restricted to its supremely luxurious interior. This car can boast a 610 litre luggage compartment (measured by the method using 50 mm diameter spheres)

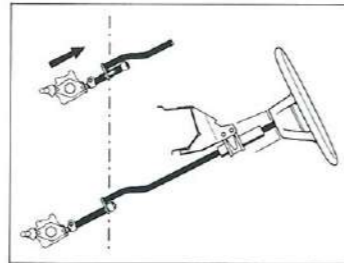
which genuinely does justice to its overall standards – and leaves all other cars in its class looking envious.



# Safe.

## Passive safety.

The Audi 200 Turbo's standards of safety, the result of much intensive research by Audi, have been achieved with a synthesis of weight-saving design methods and occupant protection features. Maximum reserves of passive safety are incorporated into the car's rigid occupant cell, with extensive energy-absorbing body zones at front and rear. Generous centre tunnel and body sill cross-sections increase bodyshell rigidity and ensure that the occupant protection systems can function safely. The bonded-in laminated safety glass windscreen and the



rear window provide added stability. Inside the Audi 200 Turbo, there are no sharp corners or edges which could injure the occupants. The padded four-spoke safety steering wheel with its large impact pad and flexible mounting ensures added protection. The steering column includes a disconnecting element. The seat belt system is designed to operate together with the body deformation zones if a serious accident should occur. Just how much the Audi 200 Turbo is designed for passenger safety is evident in such features as the rigidly-anchored seats with adjustable head restraints and the three-point automatic seat belts for four passengers (with roll-up lap-only belt for the centre rear passenger), the resilient material used for the armrests or the microcomputer-controlled "Auto-Check" monitoring system with its precision display of the most important operating functions.

## Active safety.

Audi vehicles have long since been fine examples of active driving safety. In particular, Audi has always been at the forefront of new developments in suspension design. In pursuit of higher active safety, Audi's technical experts have pioneered front-wheel drive research and technology for over fifty years. The principal advantage of



front-wheel drive is high directional stability, due to the centre of gravity being situated well forward. The greater the load, the more favourable the axle load distribution, thus providing

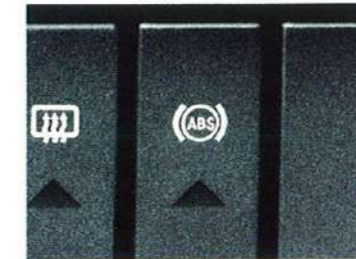
the front-wheel drive vehicle with an effective safeguard against the tail-heaviness which can adversely affect a vehicle's handling. The driven wheels provide a firm grip under load, both in dry weather and in wintery conditions. In addition, the Audi 200 Turbo has low sensitivity to crosswinds – again thanks to front-wheel drive.

It is no exaggeration to claim that the Audi 200 Turbo's handling puts it clearly among the leaders. A whole range of technical details are combined in a highly effective way, as on the spring-strut front suspension with self-stabilising steering. This largely ensures that the car stays on the chosen line, for example if the wheels on one side cross a loose surface, or if the driver is forced to brake when the road surface under one side of the car is slippery.

The torsion- crank rear suspension makes a vital contribution to both safe road behaviour and ride comfort. Together with

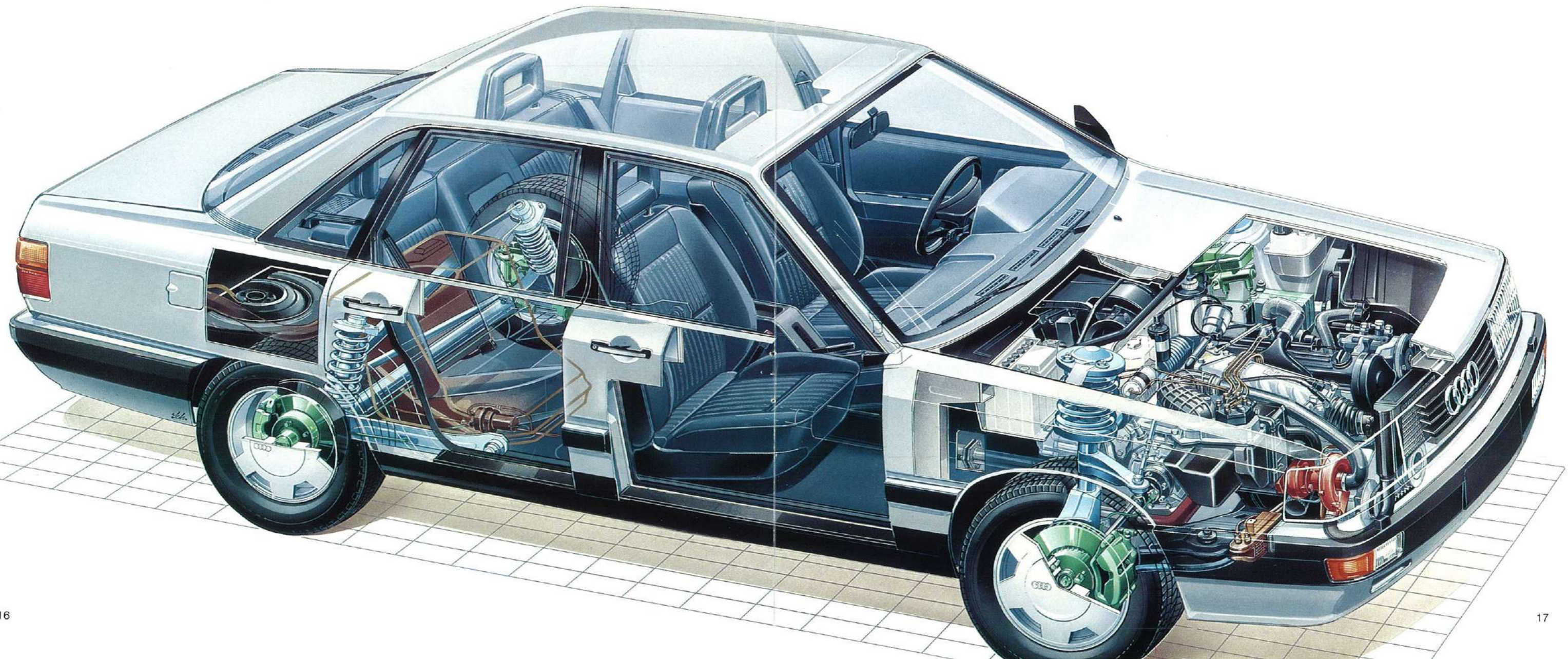
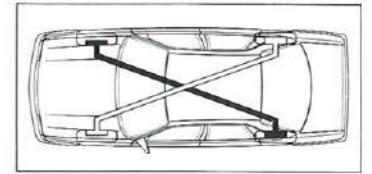
the long wheelbase and wide track and the well-chosen spring and damper rates, the sheer excellence of Audi's suspension technology becomes unmistakably clear. The Audi 200 Turbo's superb vitality, its free-revving, flexible engines and its low weight all make a big contribution towards active safety.

To match its performance potential, the Audi 200 Turbo has a diagonally-split dual circuit brake system of ample capacity, a hydraulic brake servo and load-controlled brake pressure regulator and disc brakes at front and rear, with ventilated front discs. If one brake circuit should fail for any reason, virtually half



the braking force will still be available at one front and one rear wheel. And the antilock braking system (ABS) is standard, for still greater braking safety.

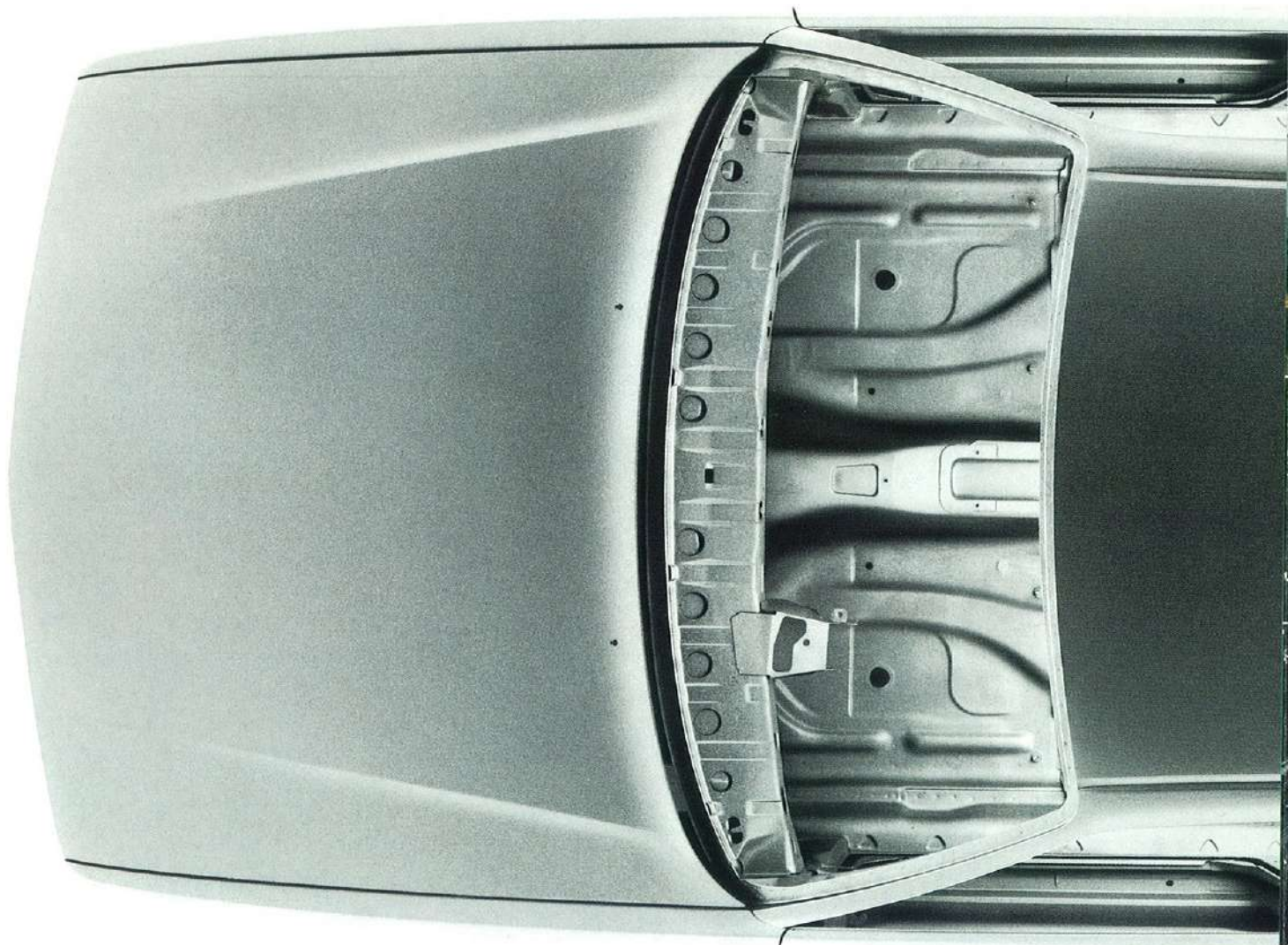
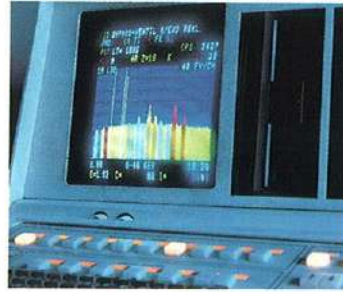
The Audi 200 Turbo certainly has a wealth of safety features to offer.



# Top quality.

The unparalleled all-round quality of the Audi 200 Turbo means that it should last its owner a very long time. This is the world's first series-production saloon car with a fully-galvanised body, adding an entirely new dimension to retention of value and high resale price. High quality materials, new technologies and production principles are incorporated into a design concept aimed entirely at achieving long, reliable operating life, and to ensure that this car has a high

resale value when it eventually changes hands. To back up the high material quality of the Audi 200 Turbo, every stage in the production process has to be reliably and closely controlled. These supreme quality standards are the result of a whole range of complex processes; the significance of the most fundamental of these measures – the fully-galvanised bodyshell – is clearly reflected in the car's long-term value. This galvanising process provides effective protection against corrosion for many years to come, in particular for seams, edges, beads and areas often damaged by flying stones. Such protection is now afforded by an electrolytic galvanising process for both the inside and outside of the bodyshell, and by thorough hot-galvanising of all concealed areas. A special filler protects the underside against damage



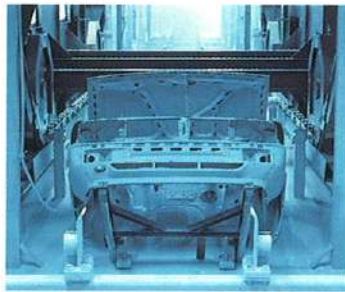
from flying stones.

The door and lid edges are sealed with PVC for maximum resistance to corrosion even under extreme conditions. Equal care is devoted to primer-coating and painting the body. The ultra-modern Audi paint shop has been designed according to the very latest technical principles, and achieves a hitherto unmatched standard of paint finish quality. A total of 27 different process stages are needed to transform the fully-galvanised shell into a finished body ready for final assembly work; they include a combined spray and dip process to degrease and rinse the bodyshell.

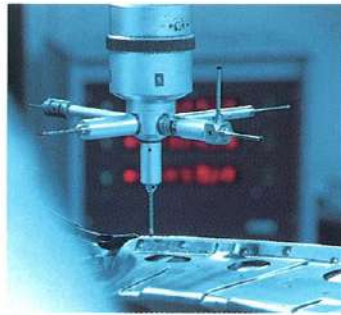
All surfaces and cavities are given thorough pre-treatment. These are the most critical stages in achieving a high quality paint finish. In addition, the bodyshell is coated with zinc phosphate to prevent corrosion and

rust penetrating beneath the paint surface. The next stage is dip primer coating by the cathaphoretic method. This intensive coating process has a particularly beneficial effect on corners, edges and cavities. Floor pans and wheel arches are then given a coating of PVC. Finally, a protective hot wax coating is applied to the lower bodyshell cavities by an automatic flooding process.

In order to maintain a constant record of the effectiveness of these measures and develop



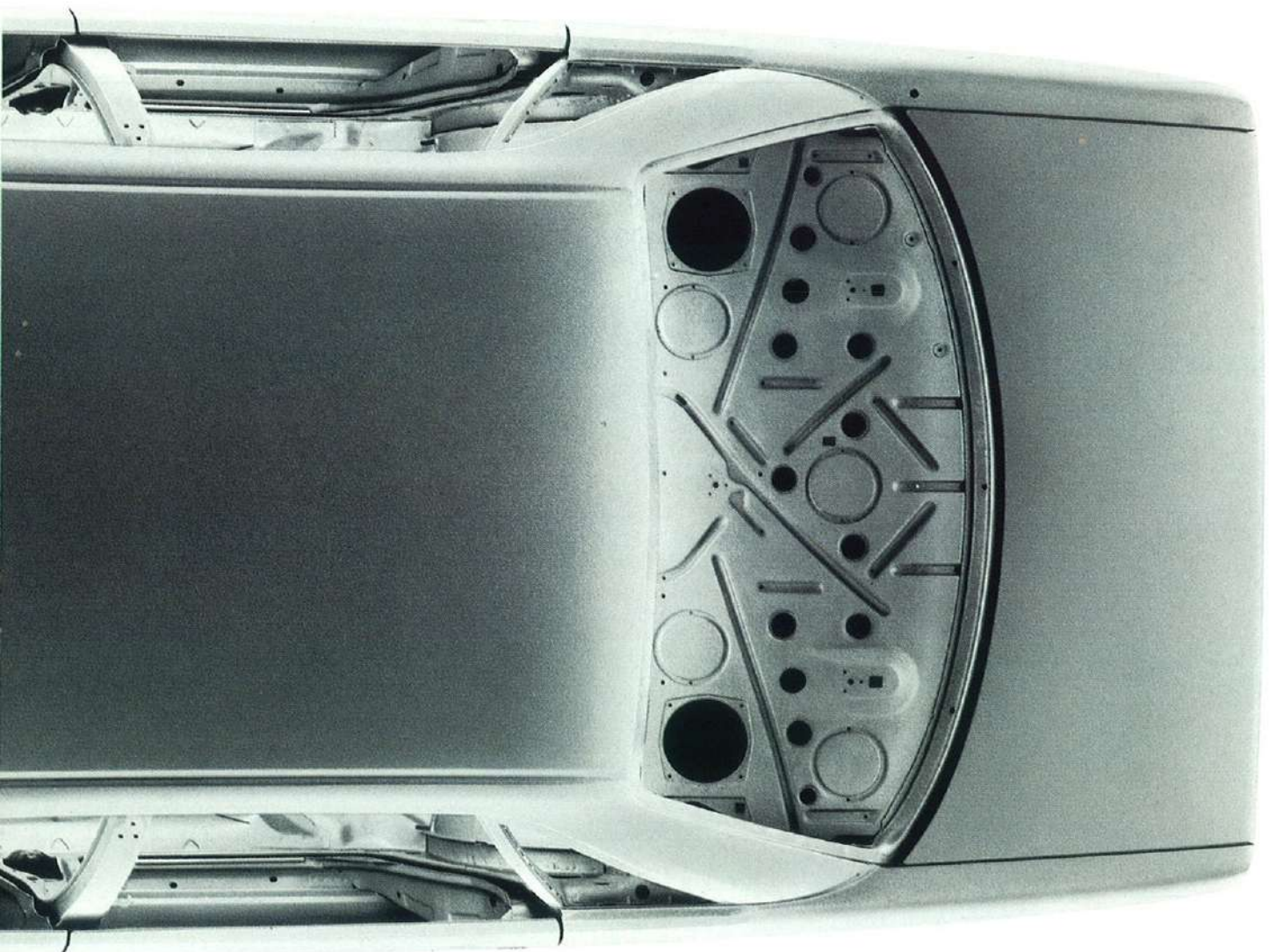
them further, Audi has set up a corrosion research centre. A wide range of climatic situations are simulated (heat, cold,



humidity), together with various road-surface conditions (wet surface, loose chippings, snow, ice or salt on road) so that detailed findings can be obtained on the best methods of corrosion protection. A further result of this research and development work is the full stainless steel exhaust system now fitted on the Audi 200 Turbo.

As a result of all these measures aimed at maintaining resale value and ensuring higher reliability, and with the aid of Audi's ultra-modern test methods such as the unique acoustic measuring chamber, the Audi 200 Turbo is able to boast a standard of quality that opens up entirely new perspectives in car value.

The fully-galvanised bodyshell.



# Equipment features. Audi 200 Turbo.

## Exterior equipment

- Metallic paintwork
- Laminated safety glass windscreen with green-tinted anti-glare strip
- Green heat-insulating glass
- Large front spoiler painted in body colour
- Plastic-faced bumpers
- Bright trim strips on bumpers
- Bright trim strips around radiator grille and headlights
- Air deflector blade on driver's windscreen wiper arm
- Light alloy wheels
- Broad side rubbing strips with bright trim and Audi emblem
- Black door sills
- Bright roof edge trim strips
- Bright windscreen and rear window surrounds
- Bright window capping strips
- Black cover on centre roof pillars
- Reflective strip between rear lights

## Interior equipment

- 4 interior trim colours
- Savoy velour cloth seat upholstery
- Padded fascia
- 3 fascia colours, to match interior trim
- Padded four-spoke safety steering wheel
- Anti-glare interior safety mirror
- Fold-down sun visors, can be swivelled to side, with illuminated make-up mirror on passenger's side

- Storage tray on driver's side
- Lockable, illuminated glove box on passenger's side, with box for small items
- Large centre console with storage tray
- Leather-covered gear lever knob
- 1 front ashtray on centre console
- Rear ashtrays at left and right, with illuminated symbols
- Reclining front seat mechanisms
- Adjustable-height driver's seat
- 4 adjustable hollow-outline head restraints.
- Three-point automatic front seat belts with improved belt guide and five-stage, height-adjustable seat belt anchorages
- 2 three-point automatic seat belts and 1 roll-up lap-only seat belt for rear passengers
- Front door trays
- Folding rear seat armrest
- Folding grab handle for front passenger
- 4 folding grab handles
- Coat hooks at rear
- Door trims with moulded armrest and door-pull handle
- Door trims with cloth insert and cover trim at top and bottom
- All roof pillars trimmed
- Black protective strips at door sills
- Fine-quality velour footwell carpeting, with reinforced heel area on driver's side



Luggage compartment fully lined  
Luggage compartment edge trim  
Storage nets on backs of front seats

#### Operating equipment

Broad-beam halogen headlights  
Manual beam-throw adjustment  
Additional integral long-distance driving lights  
2 halogen fog lights, integrated in bumper  
Twin-tone horn  
Power-assisted steering with central hydraulic system  
Antilock braking system (ABS)  
Central locking system for all doors and luggage compartment, operated from both front doors  
2 reversing lights  
2 rear fog lights  
Hazard warning flashers  
Electric windscreen washer  
Two-speed wipers with flick-wipe setting, intermittent wiper action and automatic wash-wipe  
Parking light circuit  
Heated rear window  
Remote-control driver's door mirror  
Electric door window lifts  
2 gas-filled springs for easy opening of engine compartment lid  
Instrument cluster with:  
Electronic speedometer, odometer, trip recorder, electronic revolution counter, fuel gauge, coolant temperature gauge.

In-car computer indicating journey time, average speed, average fuel consumption, range and current fuel consumption.

Telltale lamps for alternator, turn indicators, high headlight beams, hazard warning flashers, rear fog lights, rear window heating, door open and applied handbrake

Warning buzzer (car lights and/or radio on)  
"Auto-Check" system for monitoring:

Front brake pad wear, brake fluid level, brake lights, dipped beams, reversing lights, windscreen washer fluid level, coolant temperature, battery voltage, fuel level, engine oil pressure, fluid level and operating pressure of central hydraulic system

Variable-intensity instrument lighting  
Digital clock

Cigarette lighter at front on centre console, with illuminated symbol  
Illuminated ignition key

Cigarette lighter at rear on centre console, with illuminated symbol

4 interior and reading lights with delayed switch-off

Courtesy switches at all doors

Separate luggage compartment light

Separate engine compartment light

Provision for stereo radio installation

Rear-window aerial and 2 rear-seat headphone sockets ('duo-sound')

Fully-automatic air conditioning with three-stage blower, footwell outlets at front and adjustable fascia outlets  
Windscreen and front-door window defroster jets

Separate footwell outlets and adjustable direct outlets at rear, in centre console

Through-flow ventilation

Childproof rear door locks

Compact temporary spare wheel

Lockable fuel filler cap

Long-life underseal including wheel arches

Body cavity protection treatment

Front wheel arch linings

Stainless steel exhaust system

#### A selection of interesting optional extras:

Sports interior equipment and trim

Automatic transmission

Sliding/vent roof (also electrically operated)

Trailer towing coupling (also with detachable coupling)

HiFi package (10-loudspeaker system)

Spoke-pattern light alloy wheels

Headlight cleaning system

A selection of stereo radio systems

Leather interior trim, including door panels

Centre armrest for front seats

Self-levelling suspension

Cruise control

Ski bag

Electrically adjustable front seats with memory (4 positions) for driver's seat

Door mirror with electric remote control and heating

Aspherical driver's door mirror

Heated seats

Electrically-operated intensive windscreen cleaning pump

Electric headlight beam-throw adjustment

Electrically heated windscreen washer jets

2 storage compartments with cover in luggage compartment

Your V.A.G dealer will gladly advise you on choosing additional equipment to personalise the car of your choice.



Two of today's most versatile cars.  
Audi 200 quattro,  
Audi 200 Avant quattro.

Audi proudly presents two supreme technical achievements: the Audi 200 quattro and its individualist counterpart, the Audi 200 Avant. The latest models in a series of technical sensations through which Audi has provided fresh impulses for automobile design. For example, the Audi 200 Avant quattro is the extravagant combination of a deluxe top-class saloon and a powerful, lively coupé. And through its unique combination of exclusive ride comfort and superior transmission techno-



logy, the Audi 200 quattro distinguishes itself as a quite exceptional model in the highest category. Both models are among the most versatile automobiles of our time. With permanent all-wheel drive and two differential locks, they illustrate impressively the superior road behaviour that results from Audi quattro technology. The Audi concept means that all four wheels are driven all the time. Since power is transmitted via both axles, the driver always enjoys optimum road grip, with-

out having to adapt quickly to changes in the type of road surface and the weather conditions. This 50:50 distribution of the available power makes it almost impossible for the wheels to spin. And the inter-axle and rear-wheel differentials ensure reliable progress even under the very worst conditions. With this system, our cars remain safe and mobile on dry and wet roads, slippery surfaces, icy slopes, rough tracks, snow and gravel. Compared with cars with rough-

ly the same engine output and two wheel drive only, the four driven wheels can achieve 2.25 times as much traction on ice and up to 1.66 times more on wet roads. This extra grip can be of decisive importance in situations where active safety is vital. And the antilock braking system (ABS) is now included in the standard specification, for even greater safety. To provide maximum braking safety in conjunction with the quattro drive system. Spectacular sporting successes are also convincing

arguments in favour of the superlative Audi quattro technology and transmission principle: the Audi quattro won the 1982 and 1984 Manufacturers' World Rally Championship together with the 1983 and 1984 Drivers' World Rally Championship. With its quattro technology, Audi has introduced a new dimension to driving. Experience for yourself the meaning of true luxury allied to supreme mobility.



# Equipment features. Audi 200 quattro.

## Exterior equipment

Metallic paintwork  
Laminated windscreen with green-tinted anti-glare strip  
Green heat-insulating glass  
Large front spoiler in body colour  
Plastic-coated bumpers  
Bright trims on bumpers  
Bright trim strips around radiator grille and headlights  
Air deflector on wiper blade on driver's side  
Light alloy wheels  
Broad side rubbing strips with bright trim and Audi emblem  
Black door sills  
Bright roof edge trim strips  
Bright trim around windscreen and rear window  
Bright window cappings  
Black trims on centre roof pillars  
Reflective strip between rear lights

## Interior equipment

2 interior trim colours  
Windsor fabric and leather seat upholstery  
Padded fascia  
2 fascia colours, to match interior trim  
4-spoke safety steering wheel with leather-coated rim  
Anti-glare safety interior mirror  
Fold-down and pivoting sun visors with make-up mirror on passenger's side

Storage tray on driver's side  
Lockable, illuminated glove box and small items box on passenger's side  
Large centre console with storage tray  
Leather-covered gear lever knob  
1 front ashtray on centre console  
Rear ashtrays at left and right, with illuminated symbols  
Reclining front seat mechanisms  
Sports seats  
Adjustable-height driver's seat  
4 adjustable hollow-outline head restraints  
Three-point automatic front seat belts with convenient belt guide and five-stage adjustable upper seat belt anchorages  
2 three-point automatic rear seat belts and one lap-only roll-up belt for centre rear passenger  
Front door trays  
Folding centre armrest at rear  
4 folding grab handles  
Coat hooks for rear passengers  
Door trims with moulded armrest and door-pull handle  
Door trims with cloth insert and trim at top and bottom  
Roof pillars fully trimmed  
Black protective strips at door sills  
Fine velour footwell lining, with reinforced heel area on driver's side  
Luggage compartment lined  
Luggage compartment edge trim  
Storage nets at rear of front seats



### Operating equipment

Broad-beam halogen headlights  
Manual beam-throw adjustment  
Additional integral long-distance driving lights  
2 halogen fog lights, integrated in bumper  
Twin-tone horn  
Power-assisted steering with central hydraulic system  
Antilock braking system (ABS)  
Central locking system for doors and luggage compartment, operated from both front doors  
2 reversing lights  
2 rear fog lights  
Hazard warning flashers  
Electric windscreen washer system  
Windscreen wiper system with two-speed setting, flick-wipe setting, intermittent action and automatic wash-wipe  
Parking light circuit  
Heated rear window with "quattro" lettering in heating filament  
Tinted, remotely adjustable door mirror on driver's side  
Electric door window lifts  
Two gas-filled springs for easy operation of engine compartment cover  
Instrument cluster with:  
Electronic speedometer, distance recorder, trip recorder, electronic revolution counter, fuel gauge and coolant temperature gauge

In-car computer with inputs for: Journey time, average speed, average fuel consumption, range and current fuel consumption  
Telltale lights for:  
Alternator, turn indicators, high-beam headlights, hazard warning flashers, rear fog lights, rear window heating system, door open and handbrake applied  
Warning buzzer (car lights and/or radio on)  
Auto-Check system, monitors:  
Front brake linings, brake fluid level, brake lights, dipped headlights, rear lights, windscreen washer water, coolant temperature, battery charge, fuel level, oil pressure, and fluid level and operating pressure of central hydraulic system  
Variable-intensity instrument lighting  
Digital clock  
Cigarette lighter at front of centre console, with illuminated symbol  
Illuminated ignition key  
Cigarette lighter at rear of centre console, with illuminated symbol  
4 interior and reading lights with delayed switch-off and courtesy switches at all doors  
Separate engine compartment light  
Separate luggage compartment light  
Provision for stereo radio installations  
Rear-window aerial and two rear-

seat headphone sockets ('duo-sound')  
Fully-automatic air conditioning system, with 3-stage blower, footwell outlets at front and adjustable outlets in fascia  
Windscreen and front-door window defroster jets  
Separate footwell outlets and adjustable direct outlets on centre console for rear passengers  
Through-flow ventilation  
Childproof rear door locks  
Compact temporary spare wheel  
Lockable fuel filler cap  
Long-life underseal for body, including wheel arches  
Body cavity protection treatment  
Front wheel arch linings  
Stainless steel exhaust system

### Interesting options at extra charge

Sliding/folding sunroof (also electrically operated)  
Trailer towing coupling (also with detachable coupling)  
HiFi package (10-loudspeaker system)  
Cruise control  
Self-levelling suspension  
4 spoke-design light alloy wheels  
Headlight cleaning system  
A selection of stereo radio installations  
Leather interior trim, including door

trims  
Centre armrest for front seats  
Ski bag  
Electrically adjustable front seats with 4-position memory for driver's seat  
Electrically heated remote control door mirrors  
Aspherical driver's door mirror  
Heated seats  
Electric intensive windscreen washer system  
Electric headlight beam-throw adjustment  
Electrically heated windscreen washer jets  
2 storage compartments with cover in luggage compartment

Your V.A.G dealer will gladly advise you on choosing additional equipment to help you personalise the car of your choice.



# Equipment features. Audi 200 Avant quattro.

## Exterior equipment

- Metallic paintwork
- Laminated windscreen with green-tinted anti-glare strip
- Green heat-insulating glass
- Large front spoiler in body colour
- Rear spoiler
- Plastic-coated bumpers
- Bright trims on bumpers
- Bright trim strips around radiator grille and headlights
- Air deflector on wiper blade on driver's side
- Light alloy wheels
- Broad side rubbing strips with bright trim and Audi emblem
- Black door sills
- Bright roof edge trim strips
- Bright trim around windscreen
- Bright window cappings
- Black trims on centre roof pillars
- Reflective strip between rear lights

## Interior equipment

- 2 interior trim colours
- Windsor fabric and leather seat upholstery
- Padded fascia
- 2 fascia colours, to match interior trim
- 4-spoke safety steering wheel with leather-coated rim
- Anti-glare safety interior mirror
- Fold-down and pivoting sun visors with make-up mirror on passenger's side

- Storage tray on driver's side
- Lockable, illuminated glove box and small items box on passenger's side
- Large centre console with storage tray
- Leather-covered gear lever knob
- 1 front ashtray on centre console
- Rear ashtrays at left and right, with illuminated symbols
- Reclining front seat mechanisms
- Sports seats
- Adjustable-height driver's seat
- 4 adjustable hollow-outline head restraints, with fabric cover
- Three-point automatic front seat belts with convenient belt guide and five-stage adjustable upper seat belt anchorages
- 2 three-point automatic rear seat belts and one lap-only roll-up belt for centre rear passenger
- Front door trays
- Split rear seat back, folds down 1/3 at left 2/3 at right or completely
- 4 folding grab handles
- Coat hooks for rear passengers
- Door trims with moulded armrest and door-pull handle
- Door trims with cloth insert and trim at top and bottom
- Roof pillars fully trimmed
- Black protective strips at door sills
- Fine velour footwell lining, with reinforced heel area on driver's side
- Luggage compartment lined
- Continuous load platform
- Storage nets at rear of front seats



### Operating equipment

Broad-beam halogen headlights  
Manual beam-throw adjustment  
Additional integral long-distance driving lights  
2 halogen fog lights, integrated in bumper  
Twin-tone horn  
Power-assisted steering with central hydraulic system  
Antilock braking system (ABS)  
Central locking system for doors and luggage compartment, operated from both front doors  
2 reversing lights  
2 rear fog lights  
Hazard warning flashers  
Electric windscreen washer system  
Windscreen wiper system with two-speed setting, flick-wipe setting, intermittent action and automatic wash-wipe  
Parking light circuit  
Heated rear window with "quattro" lettering in heating filament  
Tinted, remotely adjustable door mirror on driver's and front passenger's doors  
Electric door window lifts  
Two gas-filled springs for easy operation of engine compartment cover  
Two gas-filled springs for easy operation of tailgate  
Instrument cluster with:  
Electronic speedometer, distance

recorder, trip recorder, electronic revolution counter, fuel gauge and coolant temperature gauge  
In-car computer with inputs for: Journey time, average speed, average fuel consumption, range and current fuel consumption  
Telltale lights for:  
Alternator, turn indicators, high-beam headlights, hazard warning flashers, rear fog lights, rear window heating system, door open and handbrake applied  
Warning buzzer (car lights and/or radio on)  
Auto-Check system, monitors:  
Front brake linings, brake fluid level, brake lights, dipped headlights, rear lights, windscreen washer water, coolant temperature, battery charge, fuel level, oil pressure, and fluid level and operating pressure of central hydraulic system  
Variable-intensity instrument lighting  
Digital clock  
Cigarette lighter at front of centre console, with illuminated symbol  
Illuminated ignition key  
Cigarette lighter at rear of centre console, with illuminated symbol  
4 interior and reading lights with delayed switch-off and courtesy switches at all doors  
Separate engine compartment light  
Separate luggage compartment light

Provision for stereo radio installations  
Electronically amplified roof aerial  
Fully-automatic air conditioning system, with 3-stage blower, footwell outlets at front and adjustable outlets in fascia  
Windscreen and front-door window defroster jets  
Separate footwell outlets and adjustable direct outlets on centre console for rear passengers  
Through-flow ventilation  
Childproof rear door locks  
Compact temporary spare wheel  
Lockable fuel filler cap  
Long-life underseal for body, including wheel arches  
Body cavity protection treatment  
Front wheel arch linings  
Stainless steel exhaust system

### Interesting options at extra charge

Sliding/folding sunroof (also electrically operated)  
Trailer towing coupling (also with detachable coupling)  
HiFi package (10-loudspeaker system)  
Cruise control  
Self-levelling suspension  
Higher payload (650 kg), including self-levelling suspension  
4 spoke-design light alloy wheels  
Headlight cleaning system

Rear-window wiper system with intermittent setting  
A selection of stereo radio installations  
Leather interior trim, including door trims  
Centre armrest for front seats  
Electrically adjustable front seats with 4-position memory for driver's seat  
Electrically heated remote control door mirrors  
Aspherical driver's door mirror  
Heated seats  
Electric intensive windscreen washer system  
Electric headlight beam-throw adjustment  
Roof rails  
Children's rear seat  
Luggage compartment cover  
Electrically heated windscreen washer jets

Your V.A.G dealer will gladly advise you on choosing additional equipment to help you personalise the car of your choice.



# Upholstery materials.

## Savoy velour cloth upholstery.



Sierra quattro models FF KZ



Marine quattro models FU KU



Brazil quattro models FV KQ



FW KY

## Windsor combined real leather/cloth upholstery.



Brazil FD



Quartz FE

## Kodiak real leather upholstery (real leather equipment and trim including door trims).



Brazil TM



Platinum quattro models TY TZ



Sierra beige VA



Graphite VD

Table of combinations of seat upholstery fabrics and paint finishes		Non-metallic paint finishes																				
Audi 200 Turbo Audi 200 quattro Audi 200 Avant quattro		B4	G2	G3	K2	M6	P1	Special paint finishes:	9004	9019	L1	L5	Q1	Q2	Q3	Q4	Q5	Q6	Q7	U8	W4	
		Santos beige	Tomato red	Hibiscus red	Azurite blue	Mint green	Alpine white	Brilliant black	Mother-of-pearl effect	Metallic paint finishes:	Zamatt silver metallic	Sapphire metallic	Satin black metallic	Nautical metallic	Flamingo metallic	Miracchio red metallic	Almond beige metallic	Lago metallic	Nile green metallic	Stone grey metallic	Titan red metallic	
Audi 200 Turbo: Savoy velour upholstery/fascia colour																						
Sierra/Brazil	FF	●		●	●	●	●	▲	▲				●	●		●	●	●	●			●
Marine/Marine	FU	●						▲	▲		●	●	●	●			●				●	
Brazil/Brazil	FV		●	●	●	●	●	▲	▲		●	●				●	●	●	●			●
Quartz/Graphite	FW		●	●	●	●	●	▲	▲		●	●	●	●	●	●		●	●	●	●	●
For quattro models:																						
Sierra/Brazil	KZ	◆		◆	◆	◆	◆	■	■			◆	◆			◆	◆	◆	◆			◆
Marine/Marine	KU	◆						■	■		◆	◆	◆	◆			◆				◆	
Brazil/Brazil	KQ	◆	◆	◆	◆	◆	◆			■	◆	◆			◆	◆	◆	◆	◆			◆
Quartz/Graphite	KY		◆	◆	◆	◆	◆	■	■		◆	◆	◆	◆	◆	◆		◆	◆	◆	◆	◆
Audi 200 Turbo: combined real leather/cloth upholstery/fascia colour																						
Brazil/Brazil	FD	◆	◆	◆	◆	◆	◆		■		◆	◆			◆	◆	◆	◆	◆			◆
Quartz/Graphite	FE		◆	◆	◆	◆	◆		■	■	◆	◆	◆	◆	◆	◆	◆	◆	◆			◆
Audi 200 quattro/Avant quattro: combined real leather/cloth upholstery/fascia colour																						
Brazil/Brazil	FD	●	●	●	●	●	●		▲		●	●			●	●	●	●	●			●
Quartz/Graphite	FE		●	●	●	●	●	▲	▲		●	●	●	●	●	●		●	●	●	●	●
Audi 200 Turbo and quattro models: Kodiak real leather equipment and trim/fascia colour																						
Brazil/Brazil	TM	◆	◆	◆	◆	◆	◆		■		◆	◆			◆	◆	◆	◆	◆			◆
Platinum/Graphite	TY/TZ		◆	◆	◆	◆	◆		■	■	◆	◆	◆	◆	◆	◆	◆	◆	◆			◆
Sierra beige/Brazil	VA	◆		◆	◆	◆	◆		■	■	◆	◆	◆	◆	◆	◆	◆	◆	◆			◆
Graphite/Graphite	VD		◆	◆	◆	◆	◆		■	■	◆	◆	◆	◆	◆	◆		◆	◆	◆	◆	◆

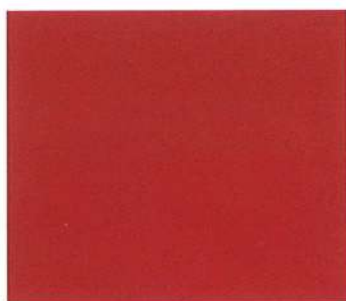
- Upholstery + paint finishes standard
- Upholstery + paint finishes at extra charge
- ▲ Upholstery standard Paint finishes at extra charge
- ◆ Upholstery at extra charge Paint finishes standard

# Paint finishes.

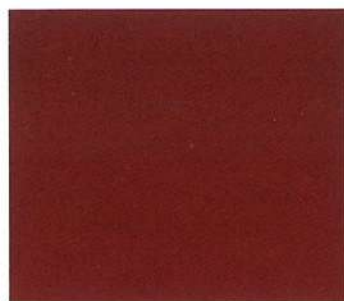
## Non-metallic paint finishes.



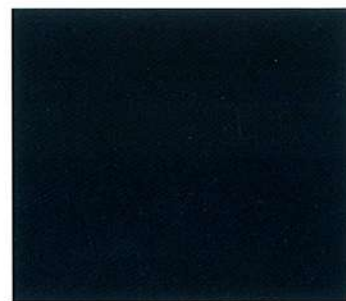
Santos beige B4



Tornado red G2



Hibiscus red G3



Azurite blue K2



Mint green M6



Alpine white P1



Brilliant black 9004



Mother-of-pearl effect\* 9019

## Special paint finishes.

## Metallic paint finishes.



Zermatt silver metallic L1



Sapphire metallic L5



Satin black metallic Q1



Nautical metallic Q2



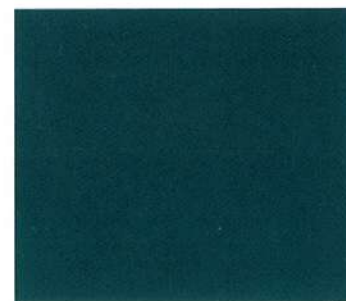
Flamingo metallic Q3



Maraschino red metallic Q4



Almond beige metallic Q5



Lago metallic Q6



Nile green metallic Q7



Stone grey metallic U8



Titian red metallic W4

\*Wheels in body colour

Please note that the printing process cannot reproduce the original shades of both paint colours and upholstery with absolute accuracy. Your V.A.G dealer can show you samples of actual paintwork and upholstery materials.

# With us the service does not end with the sale.

## **The advanced 1-year warranty with no limit on mileage.**

A manufacturer who gives this kind of warranty must be absolutely convinced of the quality of his cars. However, with this warranty we believe we give you more than just a proof of quality. We give you the assurance that you made the right choice. For economical, comfortable and safe motoring.

The 1-year warranty has worldwide validity.

## **A wide service network.**

There is a wide network of V.A.G service stations around the globe. The V.A.G service includes the latest in high-efficiency equipment and special tools to provide maintenance and service for your car throughout its long life and high resale value for your Audi.

## **Trained personnel.**

The personnel of the V.A.G companies, service managers, mechanics, reception engineers, etc., receive regular training in factory-approved schools. At the factory there is a special department which carries out research into new servicing techniques in cooperation with V.A.G dealers. All this

results in better quality service and lower maintenance costs.

## **Spare parts and exchange units.**

The V.A.G service includes a well-organized Part Service. Guaranteed, high-standard exchange units are available from all V.A.G dealers. Genuine exchange units and spare parts undergo stringent inspection at the factory and are covered by a 1-year warranty with no limit on mileage.

## **Financing, insurance, leasing.**

The service may include financing, insurance and leasing for your car. Your V.A.G dealer will be pleased to give you information on the availability of these services in your country.

Audis are sold in numerous countries where a variety of traffic and registration regulations apply. It may therefore happen that the Audis, their equipment or the services provided in a particular country differ from the details given in this catalogue. Your V.A.G dealer will be pleased to give you details of the Audi programme and services available in your country.



**Advancement  
through  
technology**

At your V.A.G dealer.