



RS 4

 Audi RS 4 Avant

Vorsprung durch Technik 

Page

Fascination

4 Audi RS 4 Avant

Technology

24 Audi ultra

32 Suspensions

26 V8 FSI engine

34 Brake systems

28 S tronic®

36 Audi drive select

30 quattro®

Equipment

40 Style guides

53 Exterior equipment

44 Paint finishes

54 Interior equipment

46 Wheels/tyres

56 Infotainment

48 Seats/seat upholstery

58 Assistance systems

52 Inlays

58 Technology

53 Lights and mirrors

59 Audi Extended Warranty

Other

60 Technical data

62 Index

61 Dimensions

66 The fascination of Audi

The equipment for the vehicle illustrated in the Fascination section can be found on page 65.
The fuel consumption and CO₂ emission figures can be found on page 60.





Anyone who chooses an Audi wants to experience sporty driving behaviour, attractive design and innovative technology. Anyone who chooses the Audi RS 4 Avant gets much more besides: the performance and driving dynamics of a powerful sports car combined with a high degree of functionality and practicality. Without compromises.

Audi through and through. And yet so much more. The Audi RS 4 Avant.

The fuel consumption and CO₂ emission figures can be found on page 60.

Uncompromisingly

demanding.





Because challenges can never be challenging enough.

Just press the accelerator to feel the irresistible force of the 4.2 litre V8 engine with its 331 kW. The FSI® direct fuel injection and the high-rev concept provide spontaneous responsiveness and outstanding elasticity. The Audi RS 4 Avant accelerates from 0 to 100 km/h in 4.7 seconds. It then goes on to sprint effortlessly to its top speed of 250 km/h*. The pleasure can even continue up to 280 km/h* if you like.

The fuel consumption and CO₂ emission figures can be found on page 60.

*Electronically regulated.







Change gears faster, move ahead more athletically: with the 7-speed dual-clutch transmission S tronic. It allows very quick gear changes with virtually no break in propulsive power. You can either let the S tronic change gears automatically or control it manually – with the selector lever or the paddles on the steering wheel. Either way, it will make for a distinctly sporty journey. And a remarkably economical one, too, thanks to a high level of efficiency and large transmission-ratio spread.

With Audi drive select you can modify the vehicle's character at any time. From the steering to the engine sound, a range of both standard components and optional systems can be configured for added sportiness or comfort. Depending on how you want to experience your Audi RS 4 Avant.

The fuel consumption and CO₂ emission figures can be found on page 60.



■ Pure sportiness, athletic design. The Audi RS 4 Avant fascinates from every perspective. The slim xenon plus headlights with LED daytime running light strip provide it with an enticing look. The large air intakes in the front bumper are a good indication of the power tucked away behind them. The Audi Singleframe features the typical RS honeycomb grid in high-gloss anthracite, surrounded by a matt aluminium-look frame.

The fuel consumption and CO₂ emission figures can be found on page 60.





■ Traction and agility – that’s what quattro was developed for. The Audi RS 4 Avant employs a special version of the permanent all-wheel drive. It operates with the self-locking centre differential and the wheel-selective torque control to distribute the drive force to each individual wheel as required and according to the driving situation. The result: even more precise handling, even better traction, even greater driving stability.

The fuel consumption and CO₂ emission figures can be found on page 60.









Because the
exceptional
begins with the exterior.

■ The Audi RS 4 Avant is the top athlete in its series. Every detail is a clear reflection of this claim. Accentuated wheel arches and sill extensions define its side line. 19- and 20-inch aluminium wheels and the wave brake discs behind them further accentuate the side view. The gently backward-sloping roof line and shoulder section underline its dynamic appearance. Sporty attributes such as the RS roof spoiler, the diffuser insert and the oval-shaped tailpipe trims of the RS exhaust system give the rear a striking appearance.

The fuel consumption and CO₂ emission figures can be found on page 60.







Because **greatness** sets big things in motion.

■ The impressive athleticism continues on the interior. The flat-bottomed RS leather-covered multifunction sport steering wheel provides good grip. The clear ergonomic design of the cockpit unites intuitive operation with the precision typical of Audi.

The Audi RS 4 Avant combines its uncompromising sportiness with generous space capacity and a sophisticated ambience. The premium quality of the inlays in carbon, or on request in aluminium, piano finish, stainless steel mesh or aluminium/Beaufort, black and the pedals in aluminium look accentuate the vehicle's elite aura.

The fuel consumption and CO₂ emission figures can be found on page 60.





- The S sport seats, front, have RS 4 embossing on the backrest and have been designed for sporty driving. The seat upholstery is available either as a black Alcantara/leather combination or in fine Nappa leather in a choice of black or lunar silver with rock grey piping. For even more lateral support we recommend the RS bucket seats, front, which are available on request.

Other details underscore the sportiness of the vehicle: e.g. the door sill trims with a fine aluminium inlay and RS 4 logo.

The fuel consumption and CO₂ emission figures can be found on page 60.





▀ The open road awaits. Long straights, breathtaking bends. Fortunately you're well prepared for it all and can enjoy every trip. Without compromises. With high standards. In the Audi RS 4 Avant.

The fuel consumption and CO₂ emission figures can be found on page 60.







Audi ultra on the podium: the Audi R18 ultra

Audi ultra:

Every gram less extends the lead.

Audi ultra, the pioneering lightweight technology from Audi, is more than just the sum of its individual components. It combines innovative materials, intelligent design principles and production processes that use resources sparingly into an overall concept. Many Audi ultra lightweight measures have already been implemented in the Audi RS 4 Avant.

That starts with the body itself. The steel shell design of the Audi RS 4 combines low weight with high rigidity. The tailor-made floor pan is made using different material thicknesses and qualities. The design uses just the right amount

of material needed in just the right places to achieve the best result. Thin metal panels made of hot- and cold-formed steel make up the body.

The aluminium components on the front and rear axles as well as the lightweight forged aluminium wheels consistently implement this lightweight theme. Innovative wave brake disc chambers with a wave-shaped contour and aluminium brake disc chambers specifically reduce the weight on the wheels. The resulting reduction in unsprung masses leads to improved rolling characteristics.

The self-locking crown gear centre differential is smaller and lighter than the previous version used. Yet another convincing example of Audi ultra.

Each lightweight component has an effect on other components, allowing their dimensions to be reduced as well. The result is a continuous development process towards less and less weight and more and more efficiency. In figures: a vehicle that weighs 100 kg less can save up to 0.3 litres of fuel per 100 km.

The fuel consumption and CO₂ emission figures can be found on page 60.

About weight reduction

The demands placed on modern vehicles are contradictory. On the one hand, they must offer enhanced performance and comfort, on the other they need to be more economical and efficient. Audi ultra resolves this conflict by examining each and every component. We demand the highest functionality combined with the lowest possible weight. The result is an intelligent mix of materials that even allows a reduction in engine size: lighter vehicles no longer need a large engine to be agile. Thus in 2012, for instance, both the Audi R18 e-tron quattro and the Audi R18 ultra drove to podium finishes at Le Mans with a V6 engine, whereas their victorious predecessor in 2010, the R15 TDI, had featured a V10 engine.



- Aluminium profile
- Hot-formed steel
- Cold-formed steel



V8 engine with 4,163 cm³ of displacement

- maximum power output 331 kW at 8,250 rpm
- maximum torque 430 Nm at 4,000–6,000 rpm
- specific power output 79.5 kW/l of displacement
- high-rev concept up to max. 8,500 rpm
- FSI direct fuel injection with up to 120 bar

Inspired by motorsport.

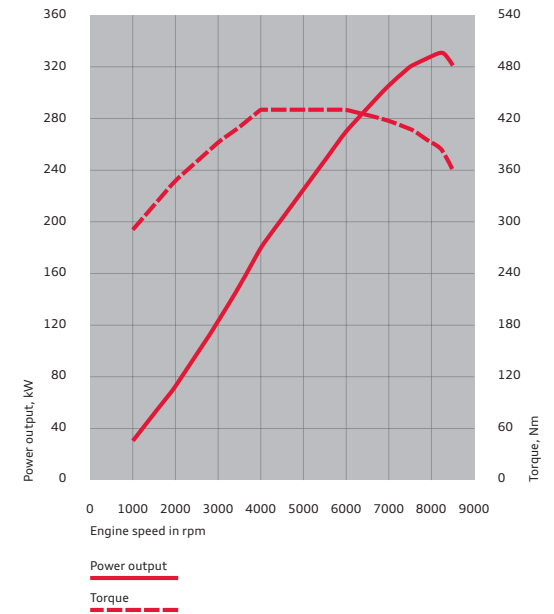
The high-rev concept
from Audi.



The high-rev concept in brief:

The agile and free-revving engine has an extremely large speed range, accentuated by impressive engine acoustics. It stands out through a high power yield and even power delivery.

Engine power curve V8 FSI



You feel the power under the bonnet of the Audi RS 4 Avant as soon as you start the ignition. It is generated by the 4.2 litre V8 FSI engine: this has FSI direct fuel injection technology, which we brought from the racing track to the road, and works with our tried-and-trusted high-rev concept.

FSI technology directly injects the fuel into the combustion chamber where it is highly compressed. This produces a very even fuel/air mixture, leading to particularly efficient

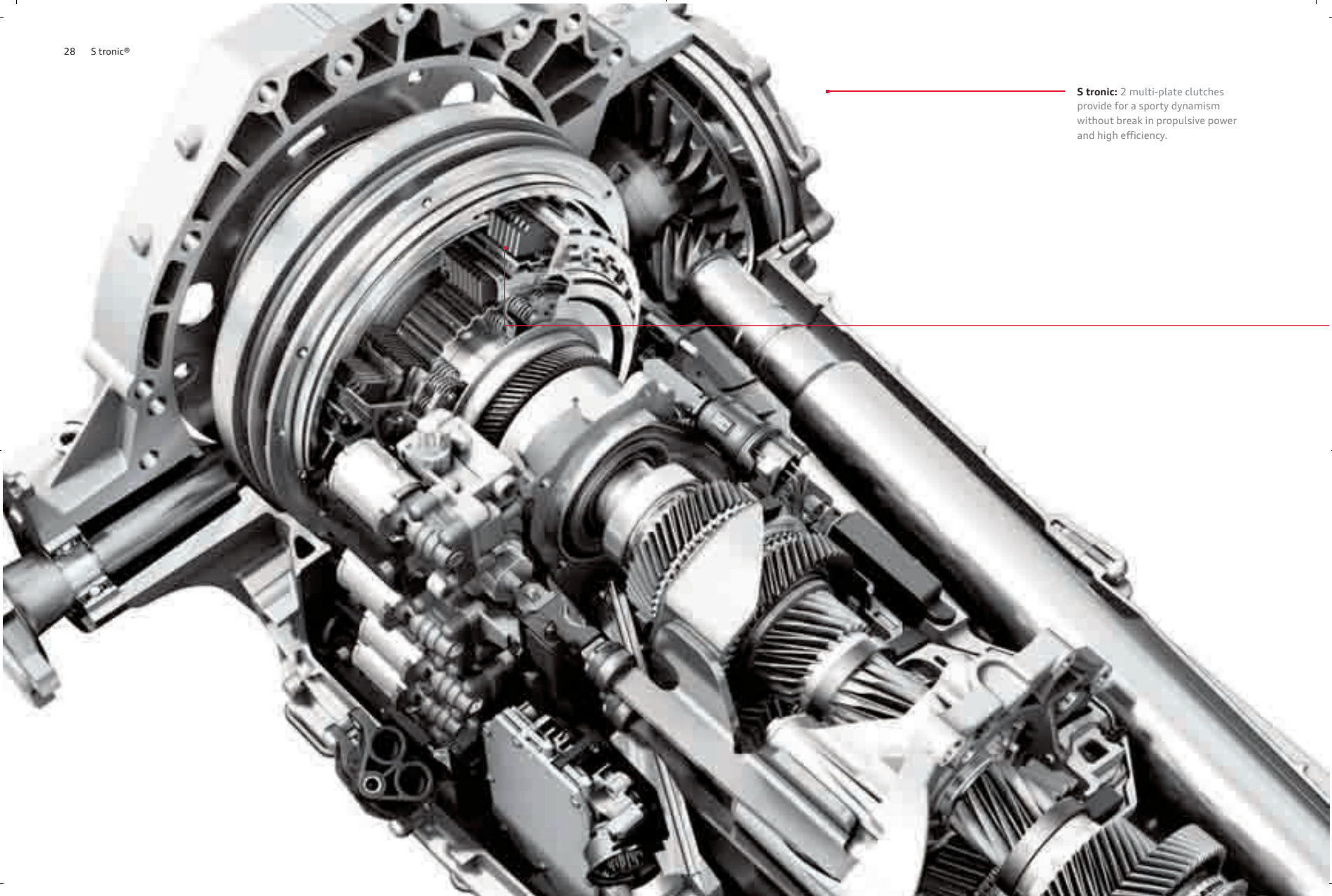
combustion and therefore to better power delivery and power yield. In addition, the direct injection serves to cool the inside of the combustion chambers so that engine compression can be increased. This results in advantages for both power output and torque.

Another component for the irresistible power of the RS 4: the high-rev concept. It provides you with high power yield per litre of displacement coupled with even power delivery over the whole engine speed range. The extremely agile and

free-revving engine reacts immediately and also produces a rich and full sound.

The high-power engine in the Audi RS 4 Avant permits engine speed ranges of up to 8,500 rpm. It reaches its maximum torque of 430 Nm at engine speeds of between 4,000 and 6,000 rpm, with at least 90 % of the power available in a wide engine speed range of between 3,000 and 8,000 rpm. This lets the RS 4 sprint from 0 to 100 km/h in only 4.7 seconds – and then ease to the 200 km/h mark in a further 11.4 seconds.

The fuel consumption and CO₂ emission figures can be found on page 60.



S tronic: 2 multi-plate clutches provide for a sporty dynamism without break in propulsive power and high efficiency.

What is the benefit of two clutches?

A double saving: time and energy.

A high-performance engine needs an adequate transmission. Which is why the Audi RS 4 Avant has a dual-clutch transmission that stands out through fast gear changing and a high degree of efficiency.

The 7-speed S tronic comprises two multi-plate clutches and two transmission parts. These are both permanently active, but only one of them is actually connected to the engine. For example, if the vehicle is accelerating in third gear, then

the second part of the transmission is already engaged in fourth gear. The gear change happens through the change of clutches – the first clutch opens whilst the second one closes. The gear change only takes a few hundredths of a second and is completed with virtually no break in propulsive power. So quickly and smoothly that it is hardly perceptible. You can choose whether you want to change gear yourself or leave it up to the transmission. In manual mode, you influence the gear change via shift paddles on the steering

wheel or by briefly touching the selector lever. In automatic mode, you can change the gear changing characteristics by selecting the programs D (Drive) and S (Sport) or through Audi drive select.

Even with all of this dynamic technology, the S tronic still remains very efficient, however. Its high level of efficiency contributes to reducing both fuel consumption and emissions. In addition, the seventh gear with long transmission ratio has been designed as overdrive.

The fuel consumption and CO₂ emission figures can be found on page 60.





Why only use two wheels when a car has four?

The quattro® permanent all-wheel drive.

Those who know Audi know quattro. And once you have driven with the permanent all-wheel drive from Audi, you do not want to drive with anything else. Why? Because there is hardly another drive system around that transfers the engine's power to the road so directly.

The Audi RS 4 Avant offers a special version of the quattro drivetrain. Its main component is the self-locking crown gear centre differential that has disc sets to achieve high blocking factors for even better traction. It is also lighter

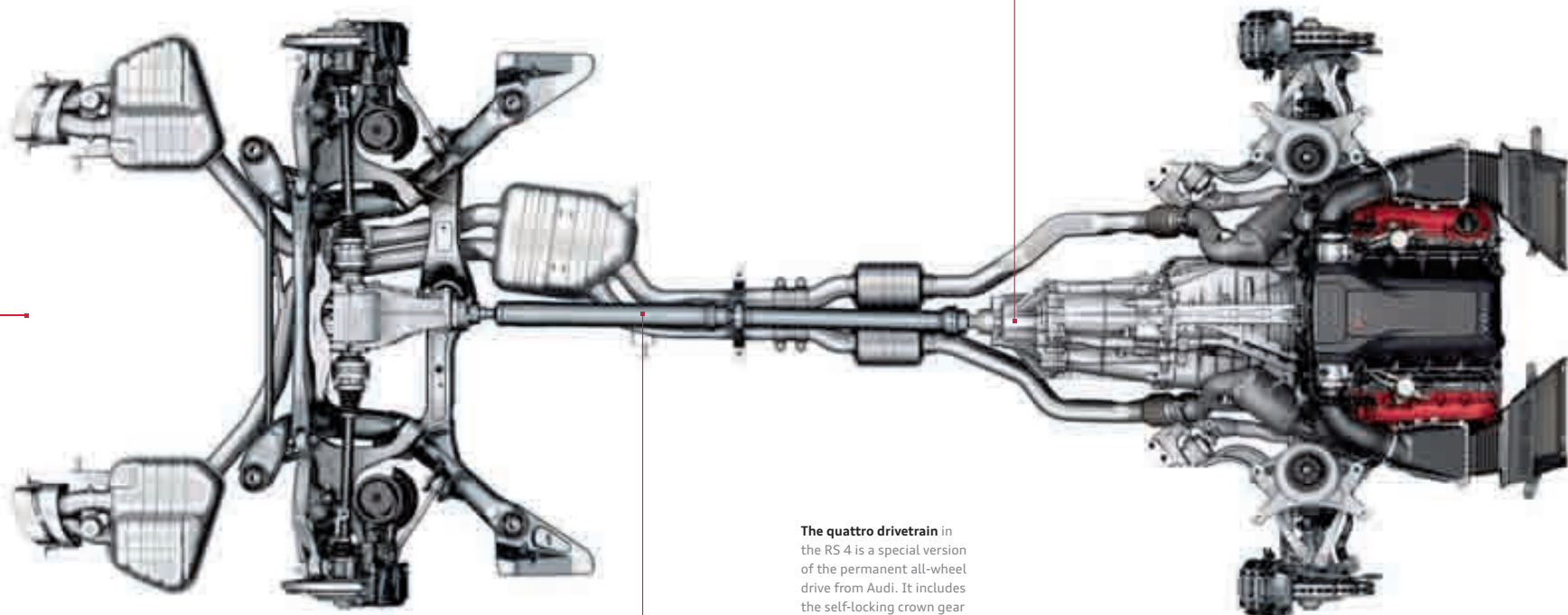
and more compact than the previous design. The asymmetrical basic design of the torque distribution of 40:60 (front axle: rear axle) is retained for the benefit of the driving dynamics; but now a greater share of the torque can be directed to the front or rear axle if required.

In conjunction with the wheel-selective torque control, the drive force is distributed to each individual wheel depending on the driving situation. The special feature here is that the effect of torque distribution is felt before



The crown gear centre differential has disc sets to achieve higher blocking factors. This allows up to 85% of the drive torque to be distributed to the rear axle and up to 70% to the front axle.





The quattro drivetrain in the RS 4 is a special version of the permanent all-wheel drive from Audi. It includes the self-locking crown gear centre differential and has wheel-selective torque control.

Dynamic. Sporty. Self-assured.

Your suspension shows plenty of character.

Whether on long journeys or quick trips: the RS sport suspension gives the Audi RS 4 Avant excellent road handling and gives you poise. It combines precise steering characteristics, outstanding directional stability and high agility.

The front axle is designed as a 5-link design. The links are connected on a front axle bearer made of aluminium which is bolted to the body for reasons of rigidity. This makes precise wheel guidance possible, while the virtual steering axle allows for an extremely short lever, thus reducing influences through drive and interference forces.

The rear axle construction is a trapezoidal-link rear suspension with independent wheel suspension,

The fuel consumption and CO₂ emission figures can be found on page 60.

the axle carrier of which is flexibly mounted. All the important elements of the RS sport suspension are made of aluminium to keep the unsprung masses low. This allows sporty handling and improved rolling characteristics to be achieved.

The RS sport suspension plus with Dynamic Ride Control (DRC) is available as an option. With this suspension technology, the nodding and pitching movements of the vehicle around the lateral and longitudinal axes are reduced purely hydraulically. The diagonal dampers are connected to one another via oil pipes and one central valve each. If the dampers are immersed differently, for example during fast cornering, the valves affect the oil flow at the cushioned wheel. They increase

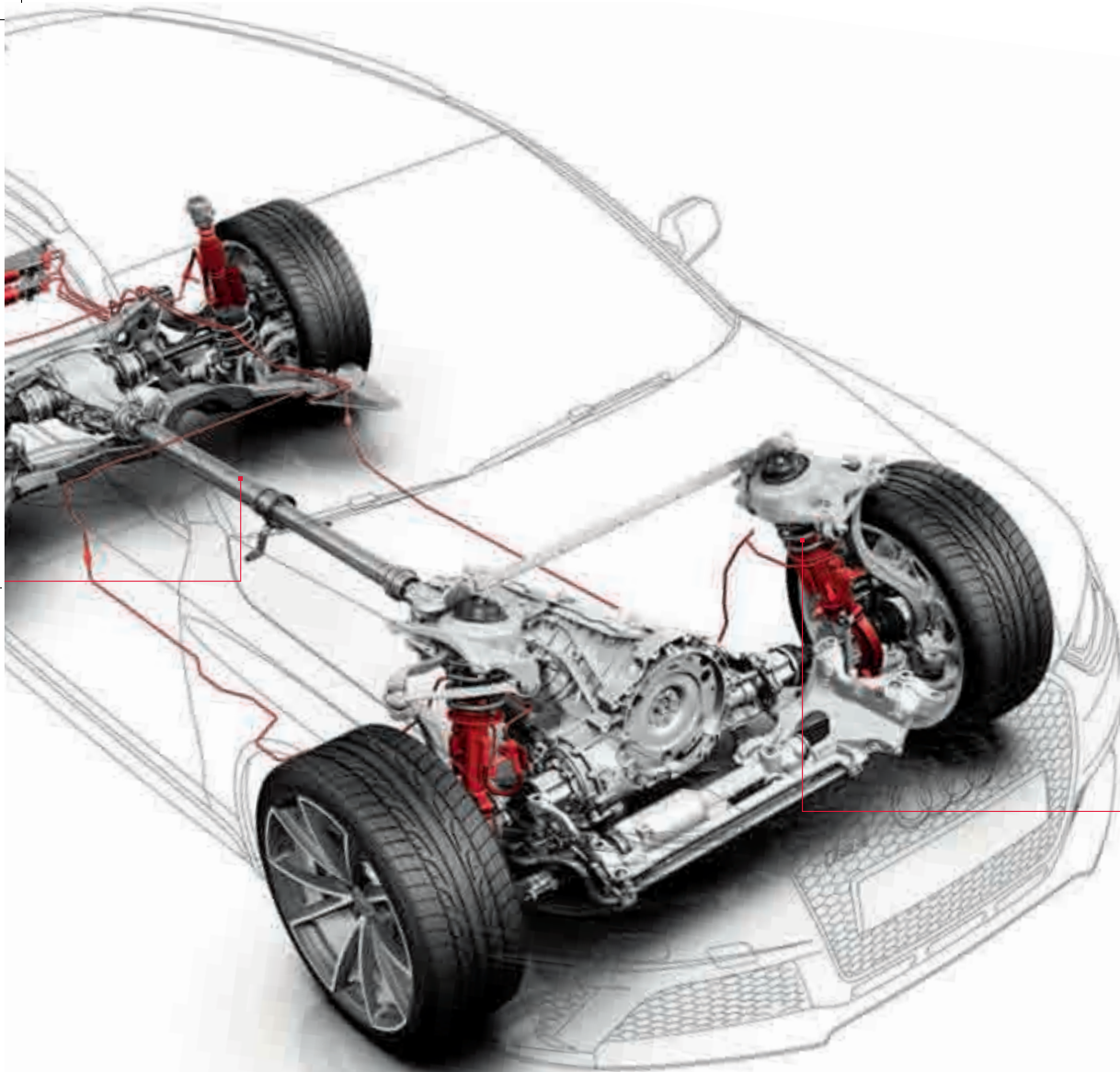
support there, thus reducing side tilt and increasing driving dynamics.

The RS sport suspension plus with Dynamic Ride Control (DRC) can be adjusted in three stages via Audi drive select: in the comfort mode it guarantees smooth rolling behaviour, the auto setting supports a committed driving style and in the dynamic position it delivers maximum driving precision.

In order to do justice to the dynamic requirements made on a high-performance vehicle, the characteristic curves of the springs and dampers as well as the rigidity of the tubular stabilisers were developed and put through their paces during extensive test series, including on racing tracks.

Equally, the electromechanical power steering was given a specific characteristic curve as part of its adaptation to the Audi RS 4 Avant. It works speed-dependent with variable steering support. Thanks to the low-positioned arrangement, the steering forces are conducted just a short distance to the wheels, which provides for a spontaneous steering response and gives you precise feedback from the road. Since the steering requires almost no energy when driving in a straight line, it also helps to reduce fuel consumption.





The RS sport suspension plus with Dynamic Ride Control (DRC) is based on the RS sport suspension. Thanks to the hydraulic links between the diagonal shock absorbers, the nodding and pitching movements of the vehicle are reduced, leading to an increase in driving dynamics. The damper recognition can be varied in three stages via Audi drive select: comfort, auto, dynamic.

Nothing can stop a top athlete.

Except for a top brake system.



The standard 18-inch RS high-performance brake system takes a powerful hold with its 8-piston fixed callipers on the front axle. Its wave brake discs comprise a cast friction ring with a wave-shaped outer contour which is connected to the brake disc chamber by means of aluminium pins. This so-called floating mounting ensures that the friction ring remains tension-free to a major extent, improving stability under high temperature loads. In addition, the axial perforation and cooling channels for internal ventilation increase the brake discs' performance. The use of aluminium and the characteristic geometry of the friction rings reduce the weight of the brake discs, thus improving the balance of the unsprung masses.

The optional 19-inch ceramic brake* with 6-piston fixed callipers at the front is available for even more demanding loads. In this brake system, the brake discs on the front axle are made of a carbon-fibre reinforced ceramic material. This is based on hard and abrasion-proof silicon carbide with high-strength carbon embedded. This combination results in an enormous abrasion resistance which allows extremely high mileages to be achieved, and at the same time reduces sensitivity to high thermal loads. In addition, the material is lighter than steel discs.



19-inch ceramic brake*

18-inch RS brake system

The brake discs on the front axle have a diameter of 365 mm and a wave-shaped outer contour. The high-gloss black painted brake callipers bear the RS logo.

The brake discs on the front axle have a diameter of 380 mm. The high-gloss anthracite painted brake callipers bear the "Audi ceramic" logo.



* Please consult your Audi partner or national Audi website to find out more about the special features of the ceramic brake.



Why does the Audi RS 4 Avant suit you so well?
Because it adapts itself to you so well.

Audi drive select.



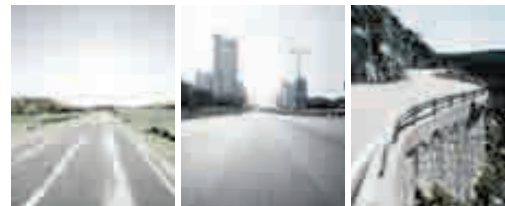
comfort



dynamic



auto



individual





It is the equipment that turns an Audi into your Audi.

Style guides: Thousands of possible combinations. Here are two of them.



Audi RS 4 Avant in Misano Red, pearl effect

Cast aluminium wheels in 5-arm rotor design in titanium look matt, high-gloss turned finish

Audi exclusive black high-gloss package

Exterior mirror housing painted in body colour

RS sport exhaust system

RS bucket seats, front, with design package in Valcona leather, black, with diamond-patterned stitching in Audi exclusive crimson red

Controls in perforated leather, black, with contrasting stitching in crimson red (part of the styling package)

Inlays in aluminium Race



The model-specific standard and optional equipment can be found in the index from page 62 onwards.



Configure now at www.audi.com



Audi RS 4 Avant in Sepang blue, pearl effect

Forged aluminium wheels in 10-spoke design,
high-gloss turned finish

Matt aluminium styling package

S sport seats, front, in fine Nappa leather, lunar silver
with piping in rock grey

RS leather-covered multifunction sport steering wheel
in 3-spoke design with shift paddles in aluminium look

Inlays in piano finish, black



The model-specific standard and optional equipment can be found in the index from page 62 onwards.



Configure now at www.audi.com



Suzuka grey, metallic

Solid/metallic paint finishes



Ibis white



Suzuka grey, metallic

The model-specific standard and optional equipment can be found in the index from page 62 onwards.



Pearl effect paint finishes



Daytona grey, pearl effect



Phantom black, pearl effect

Crystal effect paint finishes



Prisma silver, crystal effect

Customised paint finishes



Audi exclusive customised paint finishes



Misano red, pearl effect



Panther black, crystal effect



Sepang blue, pearl effect





Cast aluminium wheels in 5-V-spoke design in titanium look matt, high-gloss turned finish

The model-specific standard and optional equipment can be found in the index from page 62 onwards.

Wheels/tyres



Forged aluminium wheels in 10-spoke design, high-gloss turned finish
size 9 J x 19 with 265/35 R 19* tyres



Cast aluminium wheels in 5-arm rotor design
size 9 J x 20 with 265/30 R 20* tyres



Cast aluminium winter wheels in 5-arm structured design
size 8 J x 19 with 235/40 R 19* winter tyres, can be fitted with snow chains, permissible top speed 240 km/h



Cast aluminium wheels in 5-V-spoke design in titanium look matt, high-gloss turned finish
size 9 J x 20 with 265/30 R 20* tyres



Cast aluminium wheels in 5-arm rotor design in titanium look matt, high-gloss turned finish
size 9 J x 20 with 265/30 R 20* tyres



Cast aluminium winter wheels in 5-arm rotor design
size 9 J x 20 with 265/30 R 20* winter tyres, cannot be fitted with snow chains, permissible top speed 240 km/h

Anti-theft wheel bolts
can only be loosened using adapter provided

Tyre repair kit
with 12V compressor and tyre sealant;
permissible top speed 80 km/h

Tyre pressure loss indicator
visual and acoustic warning if the pressure drops in one or more tyres; displayed in the driver information system

Vehicle tool kit
in the luggage compartment

Vehicle jack
in the luggage compartment

*You will find specifications on the technical characteristics of tyres on page 61.



S sport seats, front

with shaped seat side bolsters for better lateral support, integrated head restraints and RS 4 embossing on the front-seat backrests; electric adjustment of seat height, fore/aft position, seat and backrest angle; electric 4-way lumbar support; extendable thigh support.

(The image shows S sport seat, front, in fine Nappa leather, black with piping in rock grey.)

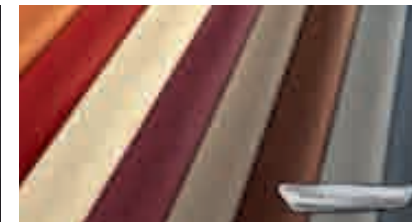
The model-specific standard and optional equipment can be found in the index from page 62 onwards.



Leather upholstery and trim



Alcantara/leather, black



Audi exclusive leather upholstery and trim



Fine Nappa leather, black
with piping in rock grey



Fine Nappa leather, lunar silver
with piping in rock grey





RS bucket seats, front

more contoured seat style for increased lateral support, with integrated head restraints and RS 4 embossing on the front-seat backrests; manual seat height, fore/aft position and backrest angle adjustment; electric 4-way lumbar support and width adjustment of the seat cushion and backrest; without side airbag.

(The image shows RS 4 bucket seat, front, in fine Nappa leather, black metallic with contrasting stitching in rock grey.)

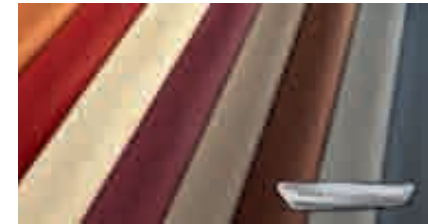
Leather upholstery and trim



Fine Nappa leather, black metallic with contrasting stitching in rock grey



Audi exclusive Valcona leather, black, with diamond-patterned stitching in crimson red



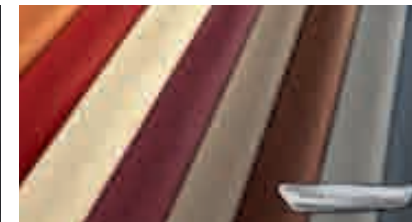
Audi exclusive leather upholstery and trim



Leather upholstery and trim



Perforated Milano leather, black



Audi exclusive leather upholstery and trim

Climate-controlled comfort seats, front

with shaped seat side bolsters and soft structure for luxurious comfort; electric adjustment of seat height, fore/aft position, seat and backrest angle; electric 4-way lumbar support; seat and backrest centre panels, front actively ventilated and heated, automatic heating as undercooling protection; perforated leather on the ventilated seat cushions of the front seats and on the unventilated seat cushions of both outer rear seats. (The image shows climate-controlled comfort seat, front, in perforated Milano leather, black.)

The model-specific standard and optional equipment can be found in the index from page 62 onwards.



Leather upholstery and trim

Alcantara/leather combination

seat centre panels and door trim inserts in Alcantara, seat side bolsters, head restraints and centre armrest, front, in leather; RS 4 embossing on the front-seat backrests

Fine Nappa leather upholstery and trim with piping

seat upholstery with piping in rock grey; head restraints, door trim inserts as well as centre armrest, front, in fine Nappa leather; RS 4 embossing on the front-seat backrests; including leather-covered armrests in the door trims

Fine Nappa leather upholstery and trim with contrasting stitching

seat upholstery with contrasting stitching in rock grey; head restraints, door trim inserts as well as centre armrest, front, in fine Nappa leather; RS 4 embossing on the front-seat backrests; including leather-covered armrests in the door trims

Perforated Milano leather upholstery and trim

seat upholstery, head restraint centre panels, as well as centre armrest, front, in Milano leather, seat centre panels of front seats and both outer rear seats perforated

Leather-covered armrests in the door trims

in fine Nappa leather

Audi exclusive leather upholstery and trim in Alcantara/Valcona leather (package 1)

seat centre panels and door trim inserts in Alcantara, seat side bolsters, head restraints, centre armrest, front as well as armrests in the door trim inserts in leather; RS 4 embossing on the front-seat backrests. The colour for the Alcantara, leather and the decorative stitching can be selected from the range of Audi exclusive colours.

Audi exclusive leather upholstery and trim in Valcona leather (package 1)

seat upholstery, head restraints, door trim inserts, centre armrest, front as well as armrests in the door trim inserts in leather; RS embossing on the front-seat backrests (with S sport seats, front, and RS bucket seats, front). Colour for the leather and the decorative stitching or piping can be chosen from the range of Audi exclusive colours.

Audi exclusive leather upholstery and trim in Valcona leather (package 2)

in addition to package 1: backrest covers leather-covered and seat attachments matched to the leather colour. Individual choice of colour for the leather and the decorative stitching or piping from the range of Audi exclusive colours.

Audi exclusive leather upholstery and trim in Valcona leather with diamond-patterned stitching (package 1)

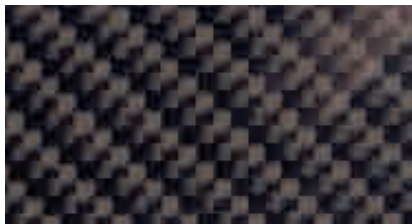
seat upholstery, head restraints, door trim inserts, centre armrest, front as well as armrests in the door trim inserts in leather; inserts of the front-passenger seat side bolsters and centre panels with diamond-stitching; RS 4 embossing on the front-seat backrests. Individual choice of colour for the leather and the decorative stitching from the range of Audi exclusive colours.

Audi exclusive design package in Valcona leather with diamond-patterned stitching

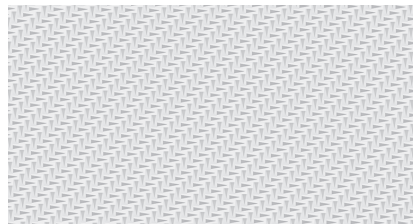
seat upholstery, head restraints, door trim inserts, centre armrest, front as well as armrests in the door trim inserts in black leather with crimson red contrasting stitching; inserts of the front-seat side bolsters and centre panels with diamond-stitching in crimson red; RS 4 embossing on the front-seat backrests; including floor mats in black with leather piping in crimson red and controls with crimson red contrasting stitching



Inlays



Carbon



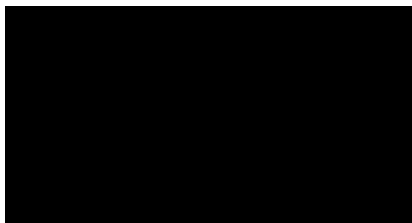
Aluminium Race



Audi exclusive inlays
in a choice of different types of wood or painted in
body colour

Inlays

for the front and rear door trims, as well as in the centre console and on the dashboard



Piano finish, black



Matt brushed aluminium



Aluminium/Beaufort, black



Stainless steel mesh
(centre console in piano finish, black)

The model-specific standard and optional equipment can be found in the index from page 62 onwards.



Light

xenon plus

The headlights utilising durable gas discharge technology for dipped and high beam ensure intensive illumination of the road and provide good uniformity and range both close up and in the distance. The automatic dynamic headlight range control reduces oncoming traffic from being dazzled. Homogeneous daytime running light strip in LED technology with low power consumption; including headlight cleaning system.

adaptive light

consisting of a dynamic cornering light and static turning light. The dynamic cornering light identifies the course of the road from the movement of the steering wheel and variably illuminates bends by pivoting the xenon headlights; operational between speeds of approx. 10 km/h and 110 km/h. The static turning light automatically switches on from a certain steering angle or if the indicators have been engaged for a while at a low vehicle speed and illuminates the new direction in which the vehicle is travelling.

High-beam assist

working within system limits, automatically detects the headlights of oncoming traffic, the rear lights of other road users and built-up areas. Depending on the traffic situation, the high beam is automatically switched on or off. The system thereby improves the driver's visibility and ensures a more relaxed drive thanks to the extra comfort and convenience. Including light/rain sensor

Lighting package

with delayed switch-off and contact switches on all doors; anti-glare lighting for the passenger compartment consisting of:

- interior lighting, front
- vanity mirror lighting
- centre console lighting
- reading lights front and rear
- glove compartment lighting
- luggage compartment lighting
- entry lighting
- active door back lights

In addition, energy-saving and long-life LED technology is used:

- footwell lighting, front and rear
- illuminated door opener
- illuminated vent controls

LED rear lights

brake/rear, indicators, rear fog and rear number plate lights in LED technology with low energy consumption; including reversing lights

Light/rain sensor

for controlling the automatic headlights and the automatic wiper function, including the coming home/ leaving home function; delay off/automatic on for main headlights, rear and number plate lights as well as the LED daytime running lights when parking/ opening the vehicle; includes windscreen with grey strip along the top edge.

Mirrors

Exterior mirrors with integrated LED indicators

electrically adjustable and heated, with heated window washer jets, convex, flat or aspherical mirror glass

Also optionally:

electrically folding

including automatic kerb-side function for the exterior mirror on the passenger side

electrically folding and automatically dimming

including automatic kerb-side function for the exterior mirror on the passenger side

electrically folding, automatically dimming with memory function

including automatic kerb-side function for the exterior mirror on the passenger side

The automatic kerb-side function tilts the exterior mirror on the passenger side downwards when reverse gear is engaged, giving the driver a better view of the kerb.

Exterior mirror housings

Choice of:

in matt aluminium look

painted in body colour

Interior mirror

Choice of:

dimming

automatically dimming

includes light/rain sensor; windscreen with acoustic glazing, as a result improved insulating value of the windscreen and reduced noise level from the outside

Roof systems

Panoramic glass sunroof

2 sections, electrical activation to raise and open the front glass section, tinted glass insert; including an electrically operated sunblind for the front and rear passengers, convenient closing/opening from the outside via remote control key; ensures a comfortable interior that is flooded with light, improved interior climate by means of efficient ventilation

Roof rails

for safe transportation of items, strong and aerodynamically shaped

Choice of:

in matt aluminium look

black

Closing systems

Remote control key

unlocks and locks doors, luggage compartment lid and tank flap; includes convenient closing/opening of the windows; with RS emblem

Convenience key

access and drive authorisation system; the key only needs to be carried with you; the engine is started and switched off via the engine start-stop button on the centre console, the vehicle is unlocked/locked from outside via sensors on all door handles. The tailgate can also be opened separately while the vehicle is locked.

Electronic immobiliser

integrated in the engine control unit, automatically activated by the car key



Closing systems**Luggage compartment lid, electrically opening and closing**

opened via the radio-operated remote control, button on the driver's door panel or the soft-touch button in the tailgate handle recess; closed via button on inside of tailgate; with closing assistance and programmable tailgate opening angle

Garage door opener (Homelink)

programmable radio-operated remote control, operating buttons integrated in the interior lighting module; can be used to open many garage doors and exterior gates; allows control of security and lighting systems; in conjunction with MMI navigation plus with program support through the MMI and set-up assistance from appropriate logbook information on the screen. For information on compatible hand-held transmitters, please contact your Audi partner or visit www.eurohomelink.com.

Anti-theft alarm

including interior monitoring system and tow-away protection via angle of inclination sensors, can be switched off; signal horn for monitoring doors, bonnet and luggage compartment lid independent of vehicle electrical system

Preparation for tracking system

preparation for connecting a tracking system (available from Audi Genuine Accessories) that enables a stolen vehicle to be located

Electronic ignition lock,

electronic, remote control key with integrated chip, automatically stores relevant vehicle service data (mileage, chassis number and much more)

Glazing**Heat-insulating glass**

green tinted, windscreen made of laminated glass; rear window heated, with timer

Dark-tinted windows (privacy glazing)

Dark-tinted rear window, rear door windows and rear side windows

Windscreen cleaning system

2 speeds, 4-speed adjustable intermittent wipe, touch-wipe function, automatic wash/wipe function, rear window wiper activated when reverse gear is engaged and wipes for the duration of the reversing manoeuvre (when front wipers are switched on)

Sunblind, manual

for the rear door windows

Sun visors

for drive and passenger, foldable and pivotable with coverable, lighted vanity mirror

Sun visors, movable

functions like sun visors, can be moved back on side in addition

Further exterior equipment**Trim strips**

in matt aluminium look

RS bumper

in a sporty dynamic design; at the front with large air intakes in high-gloss black, at the rear with diffuser insert in matt black

Audi Singleframe

radiator grille with honeycomb grid grille in high-gloss anthracite and one-piece trim frame in a matt aluminium look

Further exterior equipment**Matt aluminium styling package**

front spoiler and top edge of the diffuser insert, rear, in matt aluminium look

Audi exclusive black high-gloss package

frame of the radiator grille, radiator grille and number plate bracket, front; as well as trim strips on the window slot and roof frame in high-gloss black; including roof rails, matt black

RS exhaust system

dual-branch design with chrome-plated oval tailpipe trims

RS sport exhaust system

dual-branch design with high-gloss black oval tailpipe trims; for an increased sound experience

RS roof edge spoiler

on the luggage compartment lid

Model name/logo

RS 4 model name on the radiator grille and on the luggage compartment lid

Wheel house extensions

front and rear

Sill extensions

painted in body colour

Engine cover

with carbon application

Seats/seating comfort**4-way lumbar support for the front seats**

electric, horizontal and vertical adjustment

Front seats, electrically adjustable

with electric seat height adjustment, fore/aft position, seat and back rest angle; including electric 4-way lumbar support. (Not with RS bucket seats, front)

Front seats, electrically adjustable, including memory function for the driver seat

functions such as front seats, electrically adjustable; 2 different presets for the electrically adjustable driver seat and exterior mirrors

Rear seat backrest, folding

can be split-folded 40 : 60 or fully

Seat heating, front

heats the seat and backrest centre panel as well as seat side bolsters; individually adjustable in several stages for driver and front-passenger seat

Seat heating, front and rear

functions as for seat heating, front; also for the outer rear seats, can be regulated separately

Centre armrest, front

adjustable lengthways and angle; with fold-open storage compartment and two 12V sockets in the centre console

Centre armrest, rear

foldable

Head restraints

integrated in the backrests at the front, height manually adjustable at the rear; with optional climate-controlled comfort seats in the front with manual height adjustment of the front head restraints

The model-specific standard and optional equipment can be found in the index from page 62 onwards.



Seats/seating comfort

ISOFIX child seat mounting for the external rear seats
standard bracket for the practical fastening of child seats in accordance with ISO standards; compatible child seats can be obtained from your Audi partner

ISOFIX child seat mounting for the front-passenger seat
with passenger airbag deactivation switch

Audi exclusive backrest covers painted in body colour
for RS bucket seats, front

Steering wheels/selector levers/controls

RS leather-covered multifunction sport steering wheel in 3-spoke design, flattened at the bottom
with shift paddles in aluminium look and RS 4 emblem; full-size airbag, upholstery in perforated leather with decorative stitching in rock grey, adjustable in height and reach; for operating the provided infotainment features

RS leather-covered multifunction sport steering wheel in 3-spoke design
with shift paddles in aluminium look and RS 4 emblem; full-size airbag, upholstery in perforated leather with decorative stitching in rock grey, adjustable in height and reach; for operating the provided infotainment features

RS selector lever knob in perforated leather
with RS emblem and decorative ring in aluminium look; selector lever gaiter in leather with decorative stitching in rock grey

Audi exclusive leather steering-wheel rim
leather for the steering wheel rim available in all Audi exclusive colours; individual choice of colour for decorative stitching in various Audi exclusive colours with specific Audi exclusive seam detail

Steering wheels/selector levers/controls

Audi exclusive leather controls
leather for the steering wheel rim, selector lever knob and gaiter available in all Audi exclusive colours; individual choice of colour for stitching in various Audi exclusive colours; stitching on the steering wheel rim with specific Audi exclusive seam detail

Audi exclusive controls in black suede
leather for the steering wheel rim and selector lever knob in black suede; individual choice of decorative stitching in various Audi exclusive colours; decorative stitching on the steering wheel rim with specific Audi exclusive seam detail

Climate control

Automatic air conditioning system

- electronically regulates air temperature, volume and distribution
- sun position-dependent control
- manual recirculation
- air intake control
- defroster vents for wind screen and side windows
- dust and pollen filter
- humidity sensor
- key-coded settings

3-zone deluxe automatic air conditioning

- electronically regulates air temperature, volume and distribution
- sun position-dependent control
- separate temperature control for driver and front-passenger seat as well as in rear
- temperature setting and air flow front can be adjusted individually for left and right
- automatic air control using air quality sensor
- indirect ventilation
- climate control panel front with digital display
- climate control panel for setting the rear temperature in the centre console rear
- combined/fine particulate filter
- rain, light and humidity sensor
- key-coded settings

Luggage securing and storage systems

Storage compartments
in the front and rear door trims with storage for drinks bottles, glove compartment, eyewear compartment in the front interior lighting module, above the interior mirror

Storage package
Storage nets on the front-seat backrests, storage compartments under the front seats, lockable glove compartment and cup holder in the centre armrest, rear

Cup holder
2, integrated into the centre console

Partition net
for fastening to the bodywork or to the folded-down rear seats, useful when the rear seats are up or folded down on one side, as well as when they are folded down on both sides; removable

Lashing points
4 in the luggage compartment, for attaching luggage and other objects, attachment points for the luggage compartment package net

Reversible luggage compartment floor
one side in high-quality dilour, the other side as a waterproof, hard-wearing dirt collecting tray

Reversible mat
for the luggage compartment, velour on one side, rubber on the other, to cover the luggage compartment, also when the rear seat backrest is folded down, with fold-out protective film for the loading sill and bumper

Through-loading facility with removable ski/snowboard bag
secured by a strap, for practical transportation of long objects, e.g. up to 4 pairs of skis or 2 snowboards

Rail system with load-securing kit
in the luggage compartment, with telescopic rod, attachment strap and 4 variable lashing points for partitioning the luggage compartment and securing objects

Luggage compartment cover
easy loading and unloading of the luggage compartment. When the tailgate is open, the cover slides upwards in special guides as soon as it is lifted slightly.

Further interior equipment

Pedals and footrest in aluminium look

Floor mats, front and rear
in velour carpet, black

Audi exclusive floor mats with RS 4 logo
in black with embroidery of the front floor mats; piping and decorative stitching in black

Audi exclusive floor mats with coloured leather piping and RS 4 logo
in black with embroidery of the front floor mats and colourful leather piping. Individual choice of colour for the piping and the decorative stitching from the range of Audi exclusive colours.

Audi exclusive floor mats
Individual choice of colour for floor mats and piping from the range of Audi exclusive colours.

Audi exclusive carpet and floor mats
Individual choice of colour for carpets, floor mats and piping from the Audi exclusive colour range.

Door sill trims
with aluminium insert and RS 4 logo

Headlining in cloth
in black or lunar silver, depending on the colour selected for interior equipment



Further interior equipment

Window controls

electric front and rear, with safety system to limit closing force, one-touch open/close with convenience function

Cigarette lighter and ashtrays

ashtrays in the centre console front and rear, cigarette lighter integrated in the front ashtray

Grab handles

cushioned action, folding, four handles recessed into the roof, clothes hooks on the rear grab handles

12V socket

in the side trim of the luggage compartment on the right-hand side at the rear

230V socket

in the centre console in the rear; replaces the 12V socket

Aluminium look in the interior

on the light switch, air conditioning, MMI controls, air vents, mirror adjustment switch, window controls and around the selector lever gaiter

Audi exclusive instrument cluster surround

in piano finish look, black

MMI® and navigation systems

MMI® navigation

- with navigation data (DVD)¹
- 6.5-inch colour display with high-quality map display and numerous detailed display options
- dynamic destination guidance with TMC (if available)
- voice operation (destination input by spelling)
- additional arrow display in the driver information system with colour display.
- radio with 3-way tuner and phase diversity
- DVD drive (MP3- and WMA-capable) for navigation data (DVD), can also be used for music CDs
- 2 SDHC card readers (for up to 32 GB)
- AUX IN connection
- 8 passive loudspeakers, total output 80 watts

MMI® and navigation systems

MMI® navigation plus

- with navigation data (hard drive)¹
- high-resolution 7-inch colour display with high quality map display and topographic map colouration, navigation data-based speed limit display as well as display of many points of interest and city images in 3D, select from 3 alternative routes, scroll along the route
- rotation/push points with integrated joystick function for searching the map
- route info in split screen display (manoeuvre points, points of interest along the Autobahn, TMCpro on route), intersection detailed map and turn recommendations, dynamic destination guidance with TMCpro (if available)
- voice control system (destination input using whole-word input in a sentence)
- TMCpro notifications read out
- additional arrow display in the driver information system with colour display.
- radio with 3-way tuner and phase diversity
- hard drive as memory for music (20 GB)
- DVD drive (MP3-, WMA-, AAC- and MPEG-4 capable), can be used for music and video DVDs
- 2 SDHC card readers (for up to 32 GB)
- AUX IN connection
- 8 passive loudspeakers, total output 80 watts

Audi connect including car phone is used in combination with Audi connect supported services such as navigation using Google Earth™ map service² and Google Street View™², weather and news, traffic information online.



Driver information system with colour display

a high-resolution colour display provides you with information from the onboard computer, auto check system, scope of display of the MMI system, brake wear indicator at front, clock and digital speed display; RS menu with oil temperature display and lap timer; the outside temperature display shows an ice crystal at temperatures under +5 °C to warn of possible black ice; including attention assist

Attention assist

Part of the driver information system; the attention assist analyses driving behaviour using a range of sensors. Steering movements and pedal actuation, for example, are recorded and compared with the individual driving patterns of the respective driver. If the evaluation indicates that the driver's attention is lapsing, the system recommends a break by means of a display in the driver information system and an acoustic signal. The system is active between 65 km/h and 200 km/h and can be deactivated.

Radio and TV systems

concert radio

- MMI operating concept with 6.5-inch colour display
- CD drive and SDHC card reader (up to 32 GB), each MP3-, WMA- and AAC-capable, AUX IN connection
- 30 station memory with dynamic channel list, reception range FM (VHF) and AM (MW, LW), TP memory function
- phase diversity, speed-dependent loud speaker control
- 8 passive loudspeakers, total output 80 watts

symphony radio

- MMI operating concept with 6.5-inch colour display
- 6-CD changer and SDHC card reader (up to 32 GB), each MP3-, WMA- and AAC-capable, AUX IN- connection
- 30 station memory with dynamic channel list, reception range FM (VHF) and AM (MW, LW), TP memory function
- phase diversity, speed-dependent loud speaker control
- 8 passive loudspeakers, total output 80 watts

Digital Audio Broadcasting

In addition to the range of analogue stations, programmes from digitally broadcast radio stations with better sound quality can be received according to DAB standard, including DAB+. Display of additional information accompanying the programme (e.g. artist, title, cover) in the form of a slide show and other programme-independent data services (e.g. weather, traffic, news). In connection with MMI navigation or MMI navigation plus also reception of DMB audio; a second DAB tuner permanently searches for alternative reception frequencies of the set radio station, at the same time the station list is updated. Please note: reception depends on local digital network availability; contents and scope of the additional information depend on provision by the respective radio station.

The model-specific standard and optional equipment can be found in the index from page 62 onwards.



Radio and TV systems

Digital TV reception

reception of digitally-broadcast (DVB-T) uncoded television stations (MPEG-2 or MPEG-4 standard), DVB-T audio stations, teletext and Electronic Programme Guide (EPG). External AV-IN connection via adapter cable (available through Audi Genuine Accessories). Please note: TV reception depends on digital network availability; no picture possible when the vehicle is moving

Audi sound system

10 speakers including centre speaker in the dashboard and subwoofer in the spare wheel well, 6 channel amplifier with a total output 180 watts

Bang & Olufsen Sound System

Surround sound feedback with 14 speakers including centre speaker in the dashboard and subwoofer in the spare wheel well; 10 channel amplifier with a total output 505 watts; exclusive speaker covers with aluminium trim, dynamic driving noise compensation. 5.1 surround sound is possible in conjunction with MMI navigation plus and the integrated DVD drive.

CD changer

in the glove compartment, for 6 CDs (MP3 and WMA-capable), shock-resistant, easily accessible, each CD can be loaded and changed individually. Music files with digital rights management (DRM) cannot be played.

Audi music interface

for connecting portable media players such as Apple iPods generation 4 and higher, Apple iPhones (music functionality) and USB storage media and MP3 players. The Audi music interface is housed in the glove compartment, operation is via an MMI or radio control unit or an RS leather-covered multifunction sport steering wheel. Please note: can only be used in conjunction with a special adapter cable (available from Audi Genuine Accessories). Please contact your Audi partner or visit www.audi.com/mp3 for information on compatible media players. If Audi music interface is ordered the separate AUX-IN connection is omitted.

Adapter cable set for Audi music interface

consisting of 2 connection cables for the connection of iPod/iPhone or data carrier/media player with USB connection (Type A); further adapter cables available from Audi Genuine Accessories; visit your Audi partner or www.audi.com/mp3 for information on compatibility.

Adapter cable set plus for Audi music interface

in addition to the adapter cable set for Audi music interface Support of the display of CoverArts, video functions, etc.; depends on end device used; visit your Audi partner or www.audi.com/mp3 for information on compatibility.

Preparation for Rear Seat Entertainment

includes pre-installation wiring and mounts for the holders in the driver and front-passenger seat backrests. The appropriate Rear Seat Entertainment package (tablet player with holder) is available as a plug-and-play unit from Audi Genuine Accessories.

Telephone and communication

Bluetooth interface

Bluetooth-capable mobile telephones can be connected to the vehicle via the interface. Hands-free operation in car using microphone is possible; please contact your Audi partner or visit www.audi.com/mp3 for information on compatible media players.

Preparation for mobile phone (Bluetooth)

comprises a hands-free facility and voice control for telephone functions as well as preparation for an optional mobile-specific charger in the centre console, front; including connection to vehicle aerial for reduced SAR radiation and better reception quality; operation via a radio/MMI navigation system or an RS leather-covered multifunction sport steering wheel; please contact your Audi partner or visit www.audi.com/bluetooth for adapters and information about which mobile phones are compatible.

Telephone and communication

Bluetooth car phone

Your Bluetooth-capable mobile phone can be conveniently connected to the vehicle's internal UMTS module (provided: the mobile phone has a SIM Access Profile); additional SIM card reader in the surround of the MMI navigation; transfer of phone book entries to the vehicle and management of the call lists; operation is via the MMI navigation system or an RS multifunction sport steering wheel; contact your Audi partner or www.audi.com/bluetooth for information on compatible car phones.

Audi connect including car phone

convenient connection of your vehicle to the internet. Use of the services supported by Audi connect is possible only with the optional MMI navigation plus equipment and with the data module integrated in Audi connect including car phone. You also require a SIM card with a data option – for car phone a SIM card with phone and data option or a Bluetooth-capable smartphone with remote SIM Access Profile (rSAP). There is a reader for your SIM card in the surround of the MMI navigation plus.

The following services supported by Audi connect are available in your model:

Mobility & navigation

- Point-of-interest (POI) search with voice control
- Traffic information online
- Navigation with Google Earth™ map service² and Google Street View™²
- Destination entry via myAudi or Google Maps™²
- Fuel prices
- Parking information
- Country information

Communication

- Wi-Fi hotspot

Infotainment

- Weather
- Audi music stream
- News online
- City events
- Travel information

The services are available only with an existing or separate mobile phone contract and only within the range of the respective mobile phone network. Additional costs may be incurred when receiving data packets from the internet, depending on the terms of your mobile phone contract, particularly when used abroad. Because of the high data volumes involved, a data flat rate is strongly recommended.

The availability of the services supported by Audi connect varies from country to country. The services are provided for at least one year from vehicle delivery. The traffic information online service requires initial activation in the vehicle. From that point onwards, this service is subject to a 36-month usage limit (in as far as activation takes place within 6 months of vehicle delivery; otherwise corresponding shortening of the usage rights). Your Audi partner will be happy to inform you about how to extend the service and the costs this incurs.

Please visit www.audi.com/connect or contact your Audi partner for more detailed information about Audi connect; contact your mobile services provider for information about contract conditions.

Handset in front for car phone

wireless handset with colour display and built-in SIM card reader, for making private calls; texts can be easily written thanks to automatic word recognition. Handset is stored in the centre armrest, front

¹ Navigation data are not available for all countries and regions. For more information, please contact your local Audi partner. ² Google and the Google logo are registered trademarks of Google Inc.



Assistance systems

adaptive cruise control

automatic distance control (control range 30–200 km/h); working within system limits, it uses a radar sensor to detect vehicles ahead and maintain this distance by automatic braking and accelerating; 4 distance levels and different driving modes can be selected individually; including Audi pre sense front: Audi braking guard warns the driver about a detected imminent collision with the vehicle in front through an extended brake assist feature; extended by the function of maximum deceleration: this is initiated at speeds below 30 km/h if there is a danger of collision with a stationary or moving vehicle in order to avoid this collision if possible.

Audi side assist

lane change assistant, working within system limits at speeds of 30 km/h and above, the system uses radar technology to monitor the area on the left, right and behind the moving vehicle and informs or warns the driver by means of an LED display in the exterior mirror if the Audi side assist has detected another vehicle assessed as critical for lane-changing.

Audi active lane assist

lane compliance assistant, helps the driver within system limits to keep comfortably in lane (operating range from about 60 to maximum 250 km/h). If the system is activated and ready and the driver has not operated the indicators, the Audi active lane assist will guide the vehicle within recognised lane boundary lines by means of gentle, corrective steering intervention; the driver can choose whether to be monitored continuously or just shortly before crossing the traffic lane marker (choice of earlier or later steering point); additional steering vibration can be adjusted if the driver wishes

Hold assist

holds the vehicle stationary for unlimited periods after stopping on normal uphill and downhill gradients. The system is activated by push-button and allows the driver to drive away easily and comfortably.

Parking system plus

acoustic and visual parking system, front and rear, with MMI display; measurement is by ultrasonic sensors integrated in the bumpers

Parking system plus with reversing camera

acoustic and visual parking system, front and rear, image of area behind the vehicle shown on the MMI display, with dynamic display elements showing the calculated path (steer-angle dependent); includes help lines and guidelines and identification of point at which to apply opposite lock when parallel parking, reversing camera integrated discreetly in the handle strip of the luggage compartment lid

Assistance package

The assistance package contains the functions of the following assistance systems: adaptive cruise control, Audi active lane assist and parking system plus with reversing camera.

Cruise control

at speeds of 30 km/h and above, the system keeps the set speed constant, provided that engine power and engine braking effect permit it; also features active braking intervention, e.g. when driving downhill; operated via separate steering column stalk, set speed displayed in the driver information system

Suspension/brakes

Audi drive select

changes vehicle characteristics by adapting power steering assistance, accelerator and gear changing characteristics as well as exhaust flap control. The system also influences other optional equipment. Available modes: comfort, auto, dynamic and – in conjunction with an MMI navigation system – individual



Suspension/brakes

Electromechanical power steering

maintenance-free rack & pinion steering with speed-dependent power steering; precise steering feel at high speeds, excellent assistance when parking

dynamic steering

when changing lanes, parking and cornering, this system improves comfort and handling by dynamically regulating steering according to the driving situation. In addition to adaptation of the steering effort (as with the electromechanical power steering), the steering angle is also adapted (steering ratio). The system is also supported further by vehicle stabilisation through ESC.

RS sport suspension

with dynamically tuned spring/damper combination and adapted elasto-kinematics; 5-link lightweight front axle with virtual steering axle including suspension brace; trapezoidal-link rear axle with independent wheel suspension; tubular stabiliser front and rear; twin-tube gas-filled shock absorbers and coil springs; front axle carrier rigidly fixed to the body, flexibly mounted axle supports at rear

RS sport suspension plus with Dynamic Ride Control (DRC)

adjustable in 3 stages; with variable suspension characteristics; 5-link lightweight front axle with virtual steering axle, including suspension brace; trapezoidal-link rear axle with independent wheel suspension; tubular stabiliser front and rear; single-tube gas-filled shock absorbers and coil springs; control range of Dynamic Ride Control (DRC) can be selected in 3 stages via Audi drive select: comfort, auto, dynamic

RS brake system

18-inch diagonally-split high-performance brake system, Antilock Brake System (ABS) and Electronic Brake Force Distribution (EBD), Electronic Stabilisation Control (ESC) with brake assist, aluminium tandem brake booster, wave brake discs, ventilated at front and rear, perforated and with floating mounting

Brake callipers

painted in high-gloss black, front callipers feature RS emblem; optionally painted high-gloss red*

Ceramic brake

19-inch high-performance brake system with carbon-fibre reinforced ceramic brake discs, front, specially developed cooling channels for the ventilated and perforated brake discs; brake callipers, front, painted in high-gloss anthracite, with “Audi ceramic” logo. Please consult your Audi partner or national Audi website to find out more about the special features of the ceramic brake.

Electromechanical parking brake

includes parking brake function when stationary, drive-off assistance function by means of automatic release when driving away and emergency braking function whilst driving by means of action on all 4 wheels

Technology/safety

Body, galvanised

(fully galvanised in areas at risk from corrosion); unitary construction, welded to the floor pan; front and rear areas feature defined crumple zones. (12 year guarantee against rust perforation)

Airbags

Full-size airbags for driver and front passenger; in combination with ISOFIX child seat mounting for the front passenger seat including deactivation switch for front-passenger airbag

Side airbags, front and head airbag system

Side airbags, front, integrated in the seat backrests (not with RS bucket seats, front); with additional head airbag system: unfolds over the entire length of the side windows to protect front and rear passengers in the event of a side impact

Side airbags, rear

as supplement to side airbags, front, and head airbag system

The model-specific standard and optional equipment can be found in the index from page 62 onwards.



Technology/safety

Integrated head restraint system

In the case of a rear-end collision, the shape of the front seats better restrains the upper body and provides more support for the head than conventional systems. This increases the level of protection and reduces the risk of a whiplash injury.

Instrument cluster

with black dials, red needles, and RS logo in the rev counter; dynamic ready-check; with adjustable lighting, electronic speedometer with odometer and trip odometer, rev counter, radio-controlled clock (GPS clock in conjunction with MMI navigation plus), coolant temperature display and fuel gauge

Safety steering column

includes a shunt mechanism with damping function to supplement the protection offered by the seat belts and airbags

Seat belts

automatic 3-point belts for all seats, with belt force limiter, seat belt tensioner and seat belt reminder, front

Warning triangle

with bracket on the inside of the luggage compartment lid

First-aid kit

in the storage compartment in the centre armrest, rear

Anti-Slip Regulation (ASR)

for improved traction, reduces spinning of the drive wheels

Electronic Differential Lock (EDL)

On surfaces with varying levels of grip, this start-off assistant automatically brakes the drive wheels on any surface that is too slippery, thereby ensuring smooth, powerful progress; operates at speeds up to approx. 100 km/h.

Electronic Stabilisation Control (ESC)

with sport mode, can be deactivated in 2 stages; networks the ABS, EBD, ASR and EDL with its own sensors and compares driving data with reference data; provides better stability by targeted braking of individual wheels and intervention in the engine management system

S tronic®

The 7-speed dual-clutch transmission with electrohydraulic actuation facilitates faster gear changing with hardly any perceptible break in propulsive power; can be operated via the shift paddles behind the steering wheel or the selector lever; in automatic mode the driver can choose between two programs D (drive) and S (sport), gear changing characteristics can be changed in automatic mode through Audi drive select

quattro®

permanent all-wheel drive with asymmetrical-dynamic wheel-selective torque control, self-locking crown gear centre differential and wheel-selective torque control; distributes the driving forces depending on the driving situation to each individual wheel for precisely controlled sporty handling

quattro® with sport differential

The electronically controlled sport differential variably distributes driving force to each wheel and ensures outstanding acceleration performance in corners and stabilises the vehicle's response to load change. It also improves direct steering characteristics and provides more agile handling due to the lower steering effort required.

Electronic regulation of the top speed at 280 km/h

Recuperation

increasing the generator voltage converts kinetic energy into usable electrical energy when the vehicle is coasting or braking. This brake energy recovery is then used to assist the generator during subsequent acceleration, saving up to 3% fuel.

Audi Extended Warranty

Audi Extended Warranty

can only be ordered directly and on purchase of a new car; is a consistent continuation of the manufacturer's guarantee so that you are protected against risk and can control servicing costs even after the first 2 years. There is a total of 9 lifetime/total mileage combinations to choose from:

Additional 1 year Audi Extended Warranty, maximum total mileage 30,000 km

Additional 1 year Audi Extended Warranty, maximum total mileage 60,000 km

Additional 1 year Audi Extended Warranty, maximum total mileage 90,000 km

Additional 2 years Audi Extended Warranty, maximum total mileage 40,000 km

Additional 2 years Audi Extended Warranty, maximum total mileage 80,000 km

Additional 2 years Audi Extended Warranty, maximum total mileage 120,000 km

Additional 3 years Audi Extended Warranty, maximum total mileage 50,000 km

Additional 3 years Audi Extended Warranty, maximum total mileage 100,000 km

Additional 3 years Audi Extended Warranty, maximum total mileage 150,000 km

* For information on when this feature will be available, please contact your Audi partner.



Model	RS 4 Avant	
Engine type	V8 cylinder petrol engine with direct fuel injection	
Displacement in cc (valves per cylinder)	4163 (4)	
Max. output ¹ in kW at rpm	331/8250	
Max. torque in Nm at rpm	430/4000-6000	
Power transmission/wheels		
Drive type	quattro® permanent all-wheel drive	
Transmission type	7-speed S tronic	
Wheels	Forged aluminium wheels, 9 J x 19	
Tyres	265/35 R 19 ²	
Weights/capacities		
Unladen weight ³ in kg	1870	
Gross vehicle weight in kg	2345	
Permissible roof load limit in kg	90	
Fuel tank capacity, approx. in l	61	
Performance/consumption⁴		
Top speed in km/h	250 ⁵	
Acceleration 0-100 km/h in s	4.7	
Fuel grade	SuperPlus sulphur-free RON 98 ⁶	
Fuel consumption ⁷ in l/100 km	urban	14.6
	extra-urban	8.5
	combined	10.7
CO ₂ emissions ⁷ in g/km	urban	339
	extra-urban	197
	combined	249
Emission standard	EUS	



Explanatory notes

- ¹ The figure given was calculated using the specified measuring procedure (current version of Directive 80/1269/EEC).
- ² You will find specifications on the technical characteristics of tyres in the adjacent table.
- ³ Unladen vehicle weight includes driver (68 kg), luggage (7 kg) and fuel tank 90 % full, calculated in accordance with the current version of EC Directive 92/21/EEC. Optional equipment may increase the car's unladen weight and drag coefficient, whereupon the possible payload limit and the top speed will be reduced accordingly.
- ⁴ A vehicle's fuel consumption and CO₂ emissions do not just depend on how efficiently the vehicle uses the fuel, but are also influenced by driving behaviour and other non-technical factors. CO₂ is the greenhouse gas primarily responsible for global warming.
- ⁵ Electronically regulated.
- ⁶ We recommend using sulphur-free super unleaded RON 98 in accordance with DIN EN 228. If this is not available, use sulphur-free regular unleaded RON 95 in accordance with DIN EN 228; power output will be slightly reduced. Unleaded RON 95 fuel with a maximum ethanol content of 10 % (E10) can generally be used. Fuel consumption details refer to operation with RON 95 fuel in accordance with 692/2008/EC.
- ⁷ The figures given were calculated using the specified measuring procedures. The figures do not refer to one individual vehicle and do not form part of any offer, but rather should be used purely for purposes of comparison between the different vehicle models.





Important note

Inspections are due as shown by the service display.



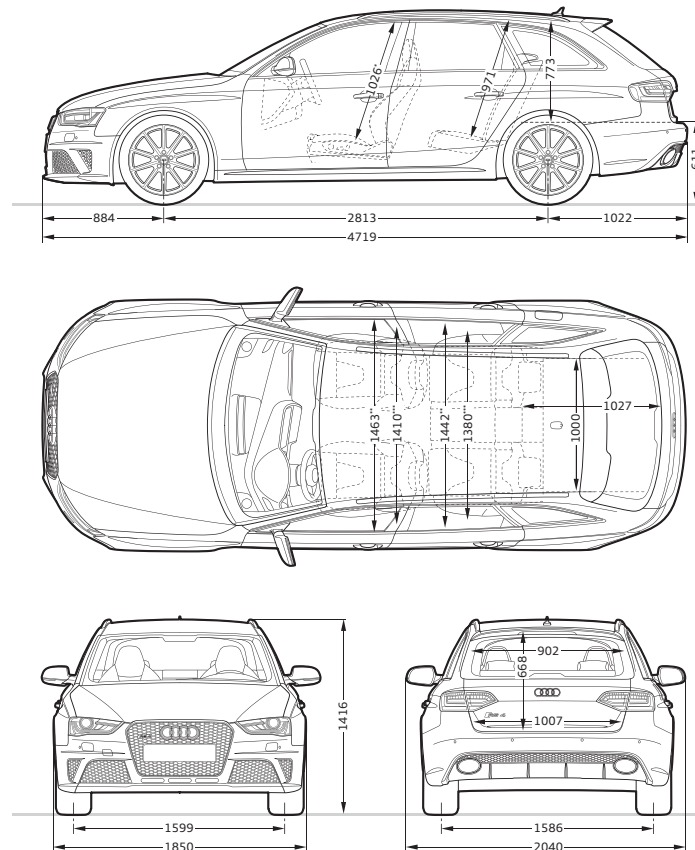
Classifications of tyre parameters

The table shows the range of fuel efficiency, wet grip and exterior noise emission classes for the different tyre sizes of the Audi RS 4 Avant.

	Tyre size	Fuel efficiency class	Wet grip class	Exterior noise emission class
Summer tyres	265/35 R 19	E	B	73-71 
	265/30 R 20	E	A	73 
Winter tyres	235/40 R 19	C	E	69 
	265/30 R 20	E	C	73 

It is not possible to order a specific tyre. Ask your Audi partner about the range of tyres available in your country.

Audi RS 4 Avant








Dimensions in millimetres.


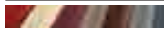

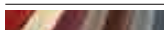
Dimensions were measured with the vehicle at unladen weight.

Luggage compartment volume 490/1430 l (measured by the VDA method, using 200 x 100 x 50 mm blocks; second value with rear seat backrest folded down and vehicle loaded up to roof height). Turning circle approx. 11.9 m.

*Maximum headroom. **Elbow room width. ***Shoulder room width.






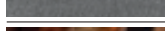

Solid paint finish	44
Ibis white	<input type="checkbox"/>
Metallic paint finishes	44
Suzuka grey, metallic	<input checked="" type="checkbox"/>
Pearl effect paint finishes	45
Daytona grey, pearl effect	<input checked="" type="checkbox"/>
Misano red, pearl effect	<input checked="" type="checkbox"/>
Sepang blue, pearl effect	<input checked="" type="checkbox"/>
Phantom black, pearl effect	<input checked="" type="checkbox"/>
Crystal effect paint finishes	45
Prisma silver, crystal effect	<input checked="" type="checkbox"/>
Panther black, crystal effect	<input checked="" type="checkbox"/>
Customised paint finishes	45
Audi exclusive customised paint finishes	<input checked="" type="checkbox"/>
Wheels/tyres	46
 19" forged aluminium wheels in 10-spoke design, high-gloss turned finish	<input type="checkbox"/>
 20" cast aluminium wheels in 5-V-spoke design in titanium look matt, high-gloss turned finish	<input checked="" type="checkbox"/>
 20" cast aluminium wheels in 5-arm rotor design	<input checked="" type="checkbox"/>
 20" cast aluminium wheels in 5-arm rotor design in titanium look matt, high-gloss turned finish	<input checked="" type="checkbox"/>
 19" cast aluminium winter wheels in 5-arm structured design	<input checked="" type="checkbox"/>



 20" cast aluminium winter wheels in 5-arm rotor design	<input checked="" type="checkbox"/>
Anti-theft wheel bolts	<input type="checkbox"/>
Tyre repair kit	<input type="checkbox"/>
Tyre pressure loss indicator	<input checked="" type="checkbox"/>
Vehicle tool kit	<input type="checkbox"/>
Vehicle jack	<input checked="" type="checkbox"/>
Seats	48
S sport seats, front	<input type="checkbox"/>
RS bucket seats, front	<input checked="" type="checkbox"/>
Climate-controlled comfort seats, front	<input checked="" type="checkbox"/>
Seat upholstery for S sport seats, front	48
Alcantara/leather, black	<input type="checkbox"/>
Fine Nappa leather, black	<input checked="" type="checkbox"/>
Fine Nappa leather, lunar silver	<input checked="" type="checkbox"/>
 Audi exclusive leather upholstery and trim	<input checked="" type="checkbox"/>
Seat upholstery for RS bucket seats, front	49
Fine Nappa leather, black metallic with contrasting stitching in rock grey	<input checked="" type="checkbox"/>
Audi exclusive Valcona leather, black, with diamond-patterned stitching in crimson red	<input checked="" type="checkbox"/>
 Audi exclusive leather upholstery and trim	<input checked="" type="checkbox"/>
Seat upholstery for climate-controlled comfort seats, front	50
Perforated Milano leather, black	<input checked="" type="checkbox"/>
 Audi exclusive leather upholstery and trim	<input checked="" type="checkbox"/>
Leather upholstery and trim	51
Alcantara/leather combination	<input type="checkbox"/>
Fine Nappa leather upholstery and trim with piping	<input checked="" type="checkbox"/>
Fine Nappa leather upholstery and trim with contrasting stitching	<input checked="" type="checkbox"/>
Perforated Milano leather upholstery and trim	<input checked="" type="checkbox"/>
Leather-covered armrests in the door trims	<input checked="" type="checkbox"/>

Standard equipment Optional equipment

Country-specific variations possible. Please find out from your local Audi partner which equipment is standard and what optional equipment is available in your country.

Audi exclusive leather upholstery and trim in Alcantara/Valcona leather (package 1)	■
Audi exclusive leather upholstery and trim in Valcona leather (package 1)	■
Audi exclusive leather upholstery and trim in Valcona leather (package 2)	■
Audi exclusive leather upholstery and trim in Valcona leather with diamond-patterned stitching (package 1)	■
Audi exclusive design package in Valcona leather with diamond-patterned stitching	■
Inlays	52
 Carbon	<input type="checkbox"/>
 Piano finish, black	■
 Aluminium/Beaufort, black	■
 Aluminium Race	■
 Matt brushed aluminium	■
 Stainless steel mesh	■
 Audi exclusive inlays	■
Light	53
xenon plus	<input type="checkbox"/>
adaptive light	■
High-beam assist	■
Lighting package	<input type="checkbox"/>
LED rear lights	<input type="checkbox"/>
Light/rain sensor	■
Mirrors	53
Exterior mirrors with integrated LED indicators	<input type="checkbox"/>
Exterior mirror, electrically folding	■
Exterior mirror, electrically folding and automatically dimming	■
Exterior mirror, electrically folding, automatically dimming with memory function	■
Exterior mirror housing in matt aluminium look	<input type="checkbox"/>
Exterior mirror housing painted in body colour	■
Interior mirror, dimming	<input type="checkbox"/>
Interior mirror, automatically dimming	■

Roof systems	53
Panoramic glass sunroof	■
Roof rails in matt aluminium look	<input type="checkbox"/>
Roof rails, black	■
Closing systems	53
Remote control key	<input type="checkbox"/>
Convenience key	■
Electronic immobiliser	<input type="checkbox"/>
Luggage compartment lid, electrically opening and closing	■
Garage door opener (Homelink)	■
Anti-theft alarm	■
Preparation for tracking system	■
Electronic ignition lock	<input type="checkbox"/>
Glazing	54
Heat-insulating glass	<input type="checkbox"/>
Dark-tinted windows (privacy glazing)	■
Windscreen cleaning system	<input type="checkbox"/>
Sunblind, manual	■
Sun visors	<input type="checkbox"/>
Sun visors, movable	■
Further exterior equipment	54
Trim strips	<input type="checkbox"/>
RS bumpers	<input type="checkbox"/>
Audi Singleframe	<input type="checkbox"/>
Matt aluminium styling package	■
Audi exclusive black high-gloss package	■
RS exhaust system	<input type="checkbox"/>
RS sport exhaust system	■
RS roof edge spoiler	<input type="checkbox"/>
Model name/logo	<input type="checkbox"/>

Further exterior equipment (continuation)	54
Wheel house extensions	<input type="checkbox"/>
Sill extensions	<input type="checkbox"/>
Engine cover	<input checked="" type="checkbox"/>
Seats/seating comfort	54
4-way lumbar support for the front seats	<input type="checkbox"/>
Front seats, electrically adjustable	<input type="checkbox"/>
Front seats, electrically adjustable, including memory function for the driver seat	<input checked="" type="checkbox"/>
Rear seat backrest, folding	<input type="checkbox"/>
Seat heating, front	<input checked="" type="checkbox"/>
Seat heating, front and rear	<input checked="" type="checkbox"/>
Centre armrest, front	<input type="checkbox"/>
Centre armrest, rear	<input type="checkbox"/>
Head restraints	<input type="checkbox"/>
ISOFIX child seat mounting for the external rear seats	<input type="checkbox"/>
ISOFIX child seat mounting for the front-passenger seat	<input checked="" type="checkbox"/>
Audi exclusive backrest covers painted in body colour	<input checked="" type="checkbox"/>
Steering wheels/selector levers/controls	55
RS leather-covered multifunction sport steering wheel in 3-spoke design, flattened at the bottom	<input type="checkbox"/>
RS leather-covered multifunction sport steering wheel in 3-spoke design	<input checked="" type="checkbox"/>
RS selector lever knob in perforated leather	<input type="checkbox"/>
Audi exclusive leather steering-wheel rim	<input checked="" type="checkbox"/>
Audi exclusive leather controls	<input checked="" type="checkbox"/>
Audi exclusive controls in black suede	<input checked="" type="checkbox"/>
Climate control	55
Automatic air conditioning system	<input type="checkbox"/>
3-zone deluxe automatic air conditioning	<input checked="" type="checkbox"/>
Luggage securing and storage systems	55
Storage compartments	<input type="checkbox"/>
Storage package	<input checked="" type="checkbox"/>
Cup holder	<input type="checkbox"/>

Partition net	<input type="checkbox"/>
Lashing points	<input type="checkbox"/>
Reversible luggage compartment floor	<input type="checkbox"/>
Reversible mat	<input checked="" type="checkbox"/>
Through-loading facility with removable ski/snowboard bag	<input type="checkbox"/>
Rail system with load-securing kit	<input checked="" type="checkbox"/>
Luggage compartment cover	<input type="checkbox"/>
Further interior equipment	55
Pedals and footrest in aluminium look	<input type="checkbox"/>
Floor mats, front and rear	<input type="checkbox"/>
Audi exclusive floor mats with RS 4 logo	<input checked="" type="checkbox"/>
Audi exclusive floor mats with coloured leather piping and RS 4 logo	<input checked="" type="checkbox"/>
Audi exclusive floor mats	<input checked="" type="checkbox"/>
Audi exclusive carpet and floor mats	<input checked="" type="checkbox"/>
Door sill trims	<input type="checkbox"/>
Headlining in cloth	<input type="checkbox"/>
Window controls	<input type="checkbox"/>
Cigarette lighter and ashtrays	<input type="checkbox"/>
Grab handles	<input type="checkbox"/>
12V socket	<input type="checkbox"/>
230V socket	<input checked="" type="checkbox"/>
Aluminium look in the interior	<input type="checkbox"/>
Audi exclusive instrument cluster surround	<input type="checkbox"/>
MMI® and navigation systems	56
MMI® navigation	<input checked="" type="checkbox"/>
MMI® navigation plus	<input checked="" type="checkbox"/>
Driver information system with colour display	<input type="checkbox"/>
Attention assist	<input type="checkbox"/>
Radio and TV systems	56
concert radio	<input type="checkbox"/>
symphony radio	<input checked="" type="checkbox"/>

Standard equipment Optional equipment

Country-specific variations possible. Please find out from your local Audi partner which equipment is standard and what optional equipment is available in your country.

Digital Audio Broadcasting	■
Digital TV reception	■
Audi sound system	■
Bang & Olufsen Sound System	■
CD changer	■
Audi music interface	■
Adapter cable set for Audi music interface	■
Adapter cable set plus for Audi music interface	■
Preparation for Rear Seat Entertainment	■
Telephone and communication	57
Bluetooth interface	■
Preparation for mobile phone (Bluetooth)	■
Bluetooth car phone	■
Audi connect including car phone	■
Handset in front for car phone	■
Assistance systems	58
adaptive cruise control	■
Audi side assist	■
Audi active lane assist	■
Hold assist	■
Parking system plus	□
Parking system plus with reversing camera	■
Assistance package	■
Cruise control	■
Suspension/brakes	58
Audi drive select	□
Electromechanical power steering	□
Dynamic steering	■
RS sport suspension	□
RS sport suspension plus with Dynamic Ride Control (DRC)	■
RS brake system	□

Brake callipers painted in high-gloss black	□
Brake callipers painted in high-gloss red	■
Ceramic brake	■
Electromechanical parking brake	□
Technology/safety	58
Body, galvanised	□
Airbags	□
Side airbags, front and head airbag system	□
Side airbags, rear	■
Integrated head restraint system	□
Instrument cluster	□
Safety steering column	□
Seat belts	□
Warning triangle	□
First-aid kit	■
Anti-Slip Regulation (ASR)	□
Electronic Differential Lock (EDL)	□
Electronic Stabilisation Control (ESC)	□
S tronic®	□
quattro®	□
quattro® with sport differential	■
Electronic regulation of the top speed at 280 km/h	■
Recuperation	□
Audi Extended Warranty	59
Audi Extended Warranty	■

Equipment for the Audi RS 4 Avant illustrated (p. 4-23):

Paint: Misano red, pearl effect

Wheels: cast aluminium wheels in 5-V-spoke design in titanium look matt, high-gloss turned finish

Seats/seat upholstery: S sport seats, front, in fine Nappa leather, black with piping in rock grey

Inlays: carbon

* For information on when this feature will be available, please contact your Audi partner.



Discover



The Audi experience

The fascination of Audi can be experienced in many different ways. Audi City in London, for example, gives you digital access to all models at their actual size and in real time. And of course it is always worth visiting one of the major motor shows. This is where Audi always presents its new models and invites you to take a look at how the future is being shaped with "Vorsprung durch Technik". Anyone interested in seeing how Audi is already putting this into practice will find fascinating insight in the "Vorsprung durch Technik" online special at www.audi.com. But a look back can also be rewarding:

at the Audi mobile museum in Ingolstadt, history and high-tech go hand in hand. A total of 130 historic exhibits and state-of-the-art forms of presentation make for a thrilling symbiosis. Plus, Audi driving experience allows you to live the excitement and countless possibilities of current Audi models. Here, pure driving enjoyment is combined with valuable learning effects. This is ensured by a team of specially trained and highly qualified instructors who provide practical tips to help you optimise your driving skills.



Responsibility

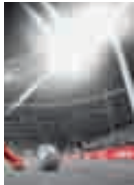
Living up to our responsibilities is a principle that is firmly anchored in Audi strategy. Alongside commercial success and international competitiveness, our responsibility toward company employees and society as a whole is a key consideration, as is protecting the environment and conserving resources. And what is true in the details – our catalogues are printed on FSC-certified paper – also holds in general: Audi develops cars that are not only sporty and emotive but also ever more efficient. In the long run, Audi wants its products to allow CO₂-neutral mobility. Seeing

to it that production in Audi plants gradually becomes CO₂-neutral is another aspect of our comprehensive approach. Audi is also committed to society – particularly in the fields of education, technology and social projects. At Audi, sustainability is closely linked with how we see the future: the Audi Urban Future Initiative sees Audi working with international experts to get to the root of future urban challenges and trends in mobility.

the world of Audi.



Choosing an Audi means choosing a brand that offers more. More individuality. More exclusivity. More fascination.



Team spirit

Motorsport is a driving force behind the brand. For years Audi has been among the champions in various racing series, for instance the 24 Hours of Le Mans or the DTM German Touring Car Masters. The values that are crucial in many different areas of sports are also central ones for Audi: precision, passion and technology. No coincidence then that Audi has been sponsoring sporting events for

many years. In the world of winter sports, for example, Audi has been the main sponsor of the German Ski Association (DSV) for almost three decades and has also partnered 14 other national alpine teams. In football, we support national and international teams. And Audi is also a partner for the German Olympic Sports Confederation.

www.audi.com

Information on all subjects mentioned can be found on our website: www.audi.com.



www.audi.com



www.audi.com/driving



configurator.audi.com



www.audi.com/cr



www.audi.com/vorsprung-durch-technik





quattro GmbH
85045 Ingolstadt
www.audi.com
Valid from April 2013

Printed in Germany
358/1142.00.18

The models and equipment versions illustrated and described in this brochure and some of the services listed are not available in all countries. Some of the cars illustrated are equipped with optional features for which an extra charge is made. Details concerning the delivery specifications, appearance, performance, dimensions and weights, fuel consumption and running costs of the vehicle were correct to the best of our knowledge at the time of going to press. Deviations from the colours and shapes shown in the illustrations may occur. No liability is accepted for errors and printing errors. The right to introduce modifications is reserved. Not to be reproduced, including in part, without the written approval of AUDI AG.

This brochure is printed on paper made from pulp bleached without the use of chlorine.

