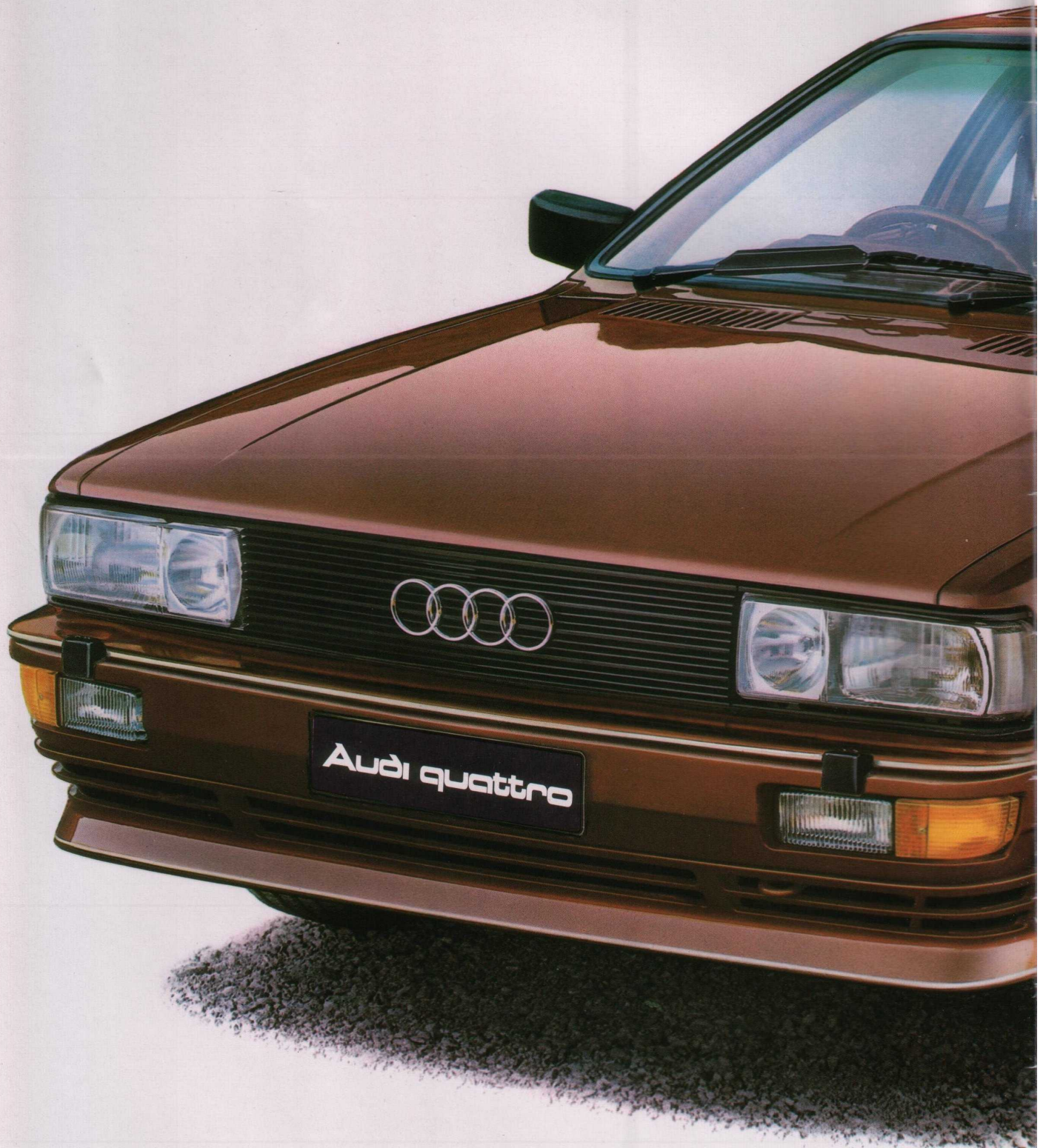


Audi Quattro.

1983



Audi. Totally different by design.



The Quattro is simply one of the most unique vehicles on the roads. Its lightweight permanent four-wheel drive system is probably the most significant piece of equipment in any car today.

The Quattro's performance is exceptional and, with its all wheel drive system, demonstrates a superiority in handling and traction unmatched by other vehicles.

Understeer and oversteer, usually associated with conventionally driven cars, is almost totally eliminated. The delights of controlling a neutral handling car speak for themselves.



Cornering speeds can be higher, with far greater margins of safety. Straight line stability at high speeds and neutral feeling during deacceleration are characteristics peculiar to the Quattro.

The four wheel drive system is incredibly efficient. The four wheel drive splits the power to the road, so that wheelspin is practically impossible even on poor surfaces.

When road conditions are extremely poor and adhesion is low, traction can be assured by locking in the centre and rear differentials; an operation which can be carried out at any speed.

Audi Quattro. Aerodynamic sty



The Audi Quattro's wedge-shaped body is devoid of superfluous mouldings. At the design stage aerodynamic research dictated the styling of its elegant,

and yet undating body shape.

Large front and rear spoilers reduce aerodynamic lift and contribute to the excellent performance and outstanding road-

holding - even at very high speeds.

A resilient plastic coating is used to protect the bumpers from damage by absorbing minor

ling.



impacts. This same material is used for the front and rear aprons. Flared side panels accommodate the wide 205/60 VR 15 tyres mounted on 6x15 light alloy

wheels. High output halogen headlights with a pressure washer system ensure excellent visibility for rapid night driving.

Audi Quattro. Turbo-charged ec



The Audi Quattro's turbo-charged engine is both economical and powerful, but this power can be harnessed to achieve considerable fuel savings. Linked to this power plant a five-

speed sports gearbox provides economy and performance motoring, but helps to combine the two fundamentally opposed elements - performance and economy.

The five cylinder fuel injected engine incorporates an exhaust driven turbo-charger. Exhaust gases which would otherwise be wasted are used to drive a turbine which forces a pre-com-

onomy.



pressed flow of dense cool air into the cylinders. The addition of an intercooler in the turbo circuit permits a constant temperature stability of the intake charge to the cylinders.

Whether the Quattro is speeding down an autoroute or pulling a horse-trailer up a mountain pass, the intercooler guarantees true power irrespective of engine load or climatic conditions.

The 2.2 litre engine develops 200 bhp at 5,500 rpm and powers the Quattro from 0-60 mph in 7.1 secs accelerating onto a top speed of 137 mph.

Audi Quattro. Advanced running



For supreme roadholding the Quattro has independent suspension with McPherson struts front and rear.

The well proven Audi de-

signed and proven negative roll radius steering system ensures outstanding directional stability even when braking on loose or uneven surfaces. In a car like the Quattro

with its innovative engineering and sophistication, the ability to pull up in a straight line gives reassuring confidence to the driver.

Unusual for a perform-

g gear.



ance car is the power assisted steering which not only eases manoeuvring at low speeds, but also gives positive 'feel' even at high speeds.

The braking system comprises dual circuit disc brakes, assisted by servo. A brake pressure regulator ensures that the rear brakes remain unlocked, even un-

der extreme brake application.

These refinements give the Quattro driver a feeling of security and command, compatible with the output of the car.

Audi Quattro. Interior comfort.



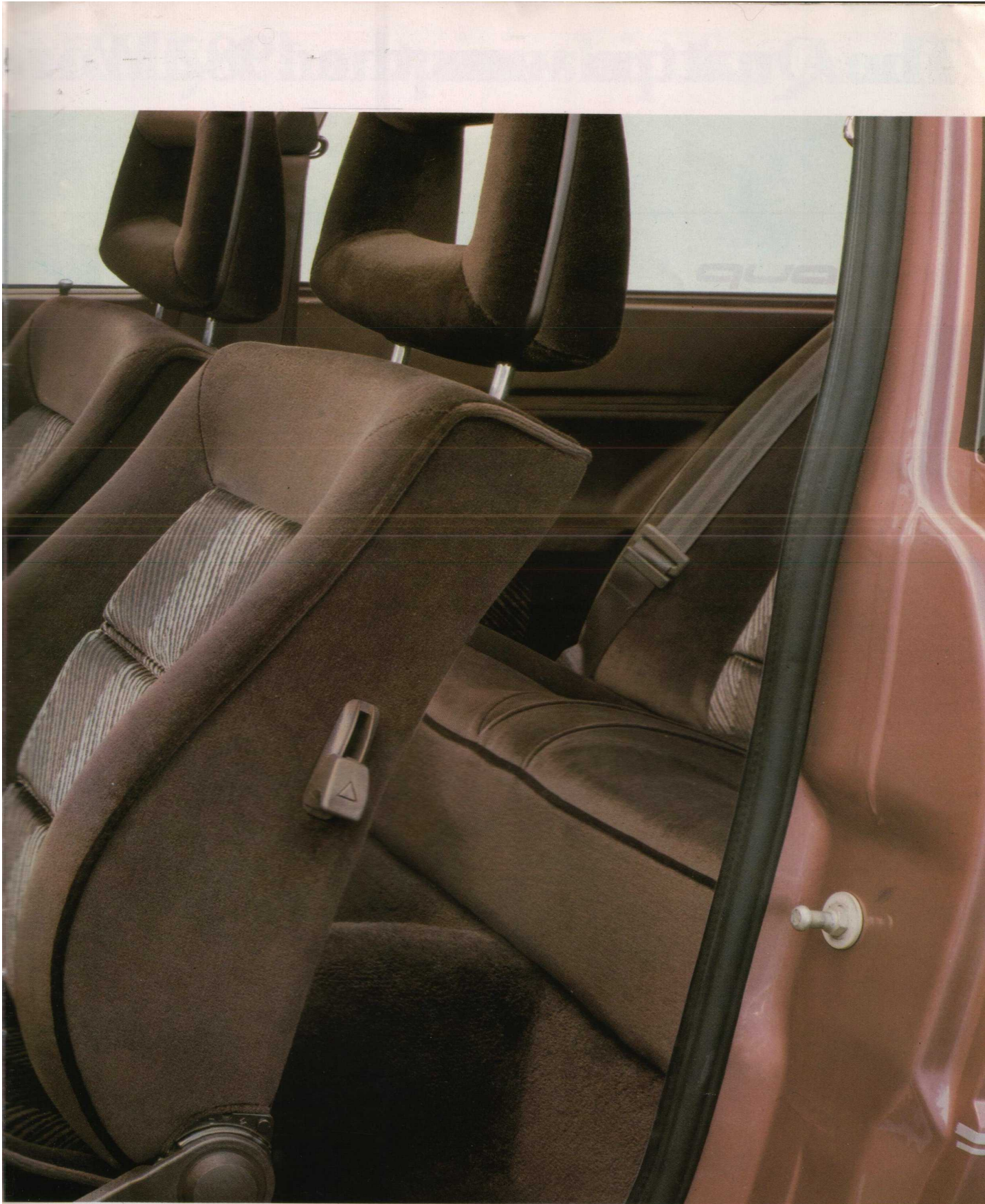
The Quattro's interior is equipped to ensure the absolute maximum comfort for driver and passengers alike.

The sports front seats are contoured to snugly fit the body

with adjustment facilities to ensure that the longest journeys are completed in total comfort. And unlike many performance cars, the Quattro can accommodate three back seat passengers.

A high quality velour trim with a contrasting design pattern is used for the seats, and extends through the door panels to the roof lining for continuity.

Full natural hide leather



upholstery is available as an optional extra. And a variable heating and ventilation system provides temperature airflow control, once again providing a comfortable driving environment.

An integral instrument panel houses the main switches and the wiper and indicator control arms are available at a touch from the fourspoke leather steering wheel.

The two exterior door mirrors are electrically operated from a control in the driver's door. Built-in heating elements ensure that the lenses are clear even at freezing temperatures.

The Quattro wins the 1982 World



World Rally Championship for Audi.



Specifications and equipment details.

	Audi Quattro
Engine	5-cylinder inline
Mixture preparation	Mechanical fuel injection, exhaust-driven turbocharger, charge air cooling
Displacement	2.2 litres (2144 cc)
Power output	200 bhp (147 kW) acc. to DIN standard, at 5500/min engine speed
Max. torque	210 lbs (285 Nm) at 3500 rpm
Electrical system	12V, 63 Amp/h battery; max. 90 Amp alternator, All-electronic transistorized ignition with programmed control system including boost air temperature input
Transmission	All-synchromesh 5-speed gearbox with integral front-axle differential. Additional lockable central differential to equalize output to front and rear wheels. Propeller shaft leading back to lockable rear-axle differential
High-performance running gear	<u>Suspension:</u> front and rear struts with coil springs and telescopic dampers. Anti-roll bars at front and rear. <u>Wheel location:</u> independent front and rear, using suspension struts and lower wishbones. Stable-track front-wheel steering offset. <u>Brakes:</u> dual-circuit, discs front and rear (front discs ventilated). Hydraulic servo and pressure-dependent braking-force regulator
Steering	Power-assisted; safety steering column with disconnecting element
Wheels and tyres	6J x15 light alloy wheels; 205/60 VR15 tyres
Top speed	137 mph (220 kph)
Acceleration (at half payload)	0-50 mph (80 kph) 4.7 secs 0-60 mph (100 kph) 7.1 secs
Fuel consumption	For the urban cycle, typical town driving conditions are simulated. The 56 mph and 75 mph figures are taken at steady speeds. Note: depending on driving style, road and traffic conditions, environmental influences and the condition of the vehicle, and fuel consumption figures obtained in practice may differ from those measured by this standard test procedure. Urban mpg-lit/100 km 18.3 15.4 56 mph mpg-lit/100 km 36.7 7.7 75 mph mpg-lit/100 km 28.5 9.9
Dimensions	Wheelbase 99.4 in (2523 mm), track front/rear 55.9/57.4 in (1421/1457 mm). Overall length/width/height, 171.2/67.8/53.0 in (4349/1723/1345 mm). Minimum ground clearance 5.5 in (135 mm). Turning circle approx. 37 ft (11.3 m).
Weights	Unladen weight 2866 lb (1300 kg), gross weight 3880 lb (1760 kg), axle load limits front/rear 2161/2094 lb (980/950 kg). Note: optional extras and other additional equipment can put up the cars unladen weight, in which case the permissible payload must be reduced accordingly.
Trailer load limits	3086/1235 lb (1400/560 kg) Note: at increasing altitudes, engine performance drops. At 3282 ft (1000 m) above sea level, and for every additional 3280 ft, deduct 10% from the total weight of the outfit. (Trailer load limit plus gross weight limit of towing vehicle).
Luggage space	13.5 cu. ft. (383 l) using the customary measuring method with 2 in (50 mm) spheres. 11.65 cu. ft. (330 l) by the VDA test method using blocks.

Exterior equipment

Metallic paint finish
Laminated safety glass windscreen with green-tinted anti-glare strip
Large integrated front spoiler
Plastic-covered bumpers integrated into front and rear apron panels
Light alloy wheels
Twin decor strips all round body
Polished trim strips above and below radiator grille
Black rain-gutter trim strips
Black door and side window frames
Trim panel between rear lights
Rear spoiler
Deflector blade on driver's wiper arm
Side repeaters for flashing turn indicators
Red reflective strip with "Coupé" inscription between rear lights

Interior equipment

Velour cloth upholstery in pattern exclusive to Quattro
Leather-covered 4-spoke sports steering wheel
Sports front seats
Reclining mechanism on driver's and front passenger's seats
Adjustable open-pattern front-seat head restraints
Contoured rear seat back in head area
Lap-and-diagonal automatic-reel front seat belts
2 lap-and-diagonal automatic-reel seat belts and 1 static-type lap-only seat belt for rear passengers
Front seat back lock
Moulded roof lining with fabric inserts
Anti-glare safety interior mirror
Fold-up and swivel sun visors with illuminated make-up mirror on passenger's side
Stowage compartment on driver's side
Lockable, illuminated glove box on passenger's side
Storage space in rear armrests
Central console
Door pockets
1 front ashtray with illuminated identification symbol; 1 ashtray at rear on right
Front passenger's grab handle
Rear grab handles with coat hooks
Door armrests with integral door pull
Cloth inserts for door and side panel trims, with strips and bottom
Door and window cappings
All roof pillars trimmed
Footwell carpeted, with reinforced heel area on driver's side
Trimmed luggage compartment
Black door-sill protective strips

Operating equipment

Halogen headlights
Integral halogen fog lights
2 reversing lights
Rear fog light
Heated rear window
Two-speed wipers with flick-wipe setting
Electric windscreen washer
Intermittent-wipe setting and automatic wash-wipe action
Headlight cleaning system
Lockable fuel filler cap
Combined ventilation and heating system with 3-speed blower, footwell outlets and adjustable facia outlets
Defroster outlets for windscreen and side windows
Through-flow ventilation

Upholstery and paintwork.

Instrumentation including:

- Speedometer, distance recorder, trip recorder, clock, revolution counter, fuel gauge.
- Telltale or warning lights for alternator, boost pressure gauge, engine oil pressure, flashing turn indicators, high headlight beams, handbrake applied and low brake fluid level
- Hazard warning flashers
- Parking light circuit
- Variable instrument lighting intensity
- Illuminated identification symbols for switches and for heater/ventilation controls
- Cigarette lighter on central console with illuminated identification symbol
- 1 interior light with courtesy switches on both doors
- Separate luggage compartment illumination
- Electric remote-control, heated mirrors on both doors
- Power-assisted steering
- Twin-tone horn
- Long-life underseal for floor pan wheel arches
- Body cavity protection treatment
- Lockable inter-axle and rear-axle differentials
- Stainless steel exhaust system with twin tailpipes
- Leather gear lever knob and gaiter
- Space-saving spare wheel

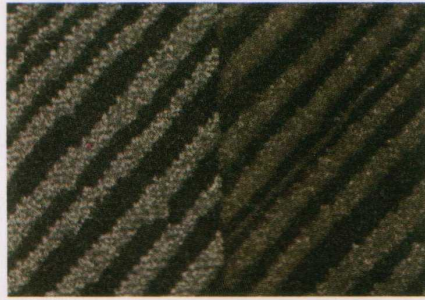
Options at extra charge

- 7Jx15 light alloy wheels
- Removable sunroof
- Leather interior trim (seats, doors and side panels)

Important note:

Continuing technical progress has enabled the first service previously needed at 600 miles (1000 kms) to be omitted. The first service is now due only after 6 months or not more than 5000 miles (7500 kms), and is free of charge except for the oil and materials used. Furthermore, the subsequent lubrication services at 15000 miles (22500 kms), 25000 miles (37500 kms) etc. have also been deleted.

Standard seat upholstery: Quattro velour.

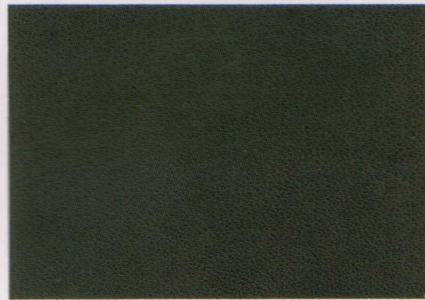


Negro

GE

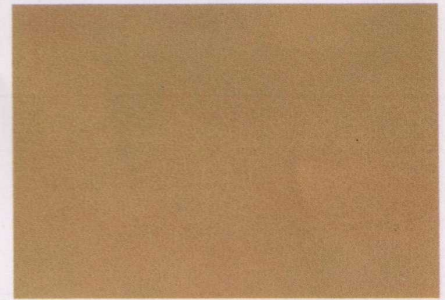
Please note that colours cannot be reproduced with absolute accuracy. This applies to paint and upholstery.

Leather upholstery – optional at extra charge.



Negro

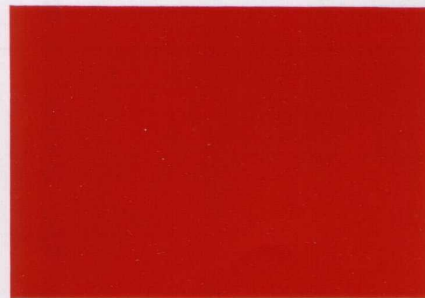
TK



Sierra

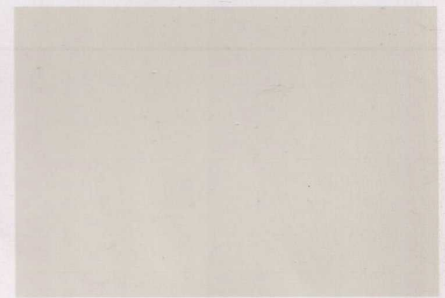
TN

Standard paint finishes.



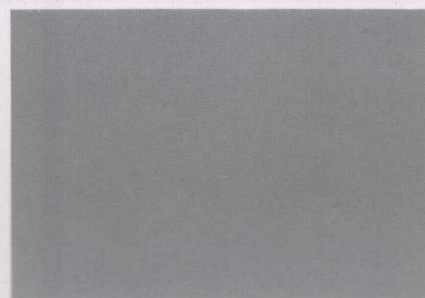
Mars red

G6



Alpine white

P1



Zermatt silver metallic

L1



Montego black metallic

L3



Amazon blue metallic

L6

