

THE ALL NEW
XENON XT
FITS NO LABEL





THE GREAT INDOORS

It's hard to imagine that a vehicle as rugged and powerful as the new Xenon XT could have a softer side. How could this mean machine boast of finer touches like a faux wood console and two tone beige interiors?

Could something with such outdoorsy macho appeal have comforts like electrically adjustable side view mirrors and one-touch power windows? Can a vehicle this individualistic, seat five comfortably? Yes.



CROSS TERRAIN (4X4)

The limits are off when it comes to the new Xenon XT. The shift on fly 4-wheel drive option, ample ground clearance and ladder frame rugged build ensures that. This is one off-roader that can tame the roughest of terrains and be as much at ease on the city roads.

ABS with EBD

The weather may not be in your control. But your safety always is. No matter how wet or slippery the surface, the Anti Lock Braking System (ABS) with Electronic Brake Force Distribution (EBD) ensure efficient braking and avoids skidding, especially during cornering at high speeds.

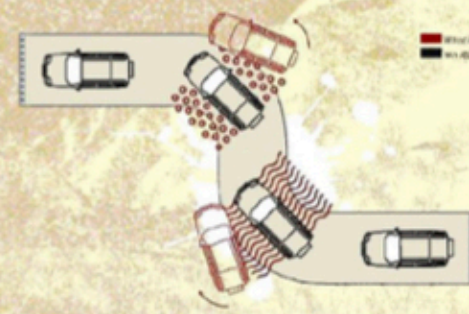
IT'S HUMAN TENDENCY TO CLASSIFY THINGS. TO PUT THEM IN NEAT LITTLE BOXES THAT WON'T THROW SURPRISES AT US. IT'S OUR WAY OF UNDERSTANDING THE WORLD. THE ALL-NEW XENON XT (CROSS TERRAIN) IS HERE TO MOVE AWAY FROM THE STEREOTYPE. TO FIT NO LABEL. THAT'S BECAUSE IT'S UNLIKE ANY VEHICLE ON THE INDIAN ROADS AND SO VERSATILE. DRIVE IT TO THE MALL OR TO THE MOUNTAINS. PICK UP THE KIDS OR GO RIVER RAFTING. PERSONALIZE IT ANY WHICH WAY AND LOAD JUST ABOUT ANYTHING YOU WANT THANKS TO ITS OPEN DECK. MAKE A STYLE STATEMENT LIKE NO OTHER.



POWERED FOR EVERYTHING



The new Xenon XT is game for whatever's on your mind. The new generation, 2.2l Dicor engine, operated by a 32-bit electronic control unit ensures that no matter what the terrain, this powerhouse with 140 PS power and 320 Nm torque is prepared.



PERSONALIZATION KIT

The new Xenon XT is a vehicle you can personalize to the hilt. Do it up according to your likes with the Front nudge guard, Roof light, Side step, Canopy, Roof rails, Roof carrier, etc.



BED LINER

There's a lot you could do with your open deck at the back. The Bed Liner option makes the open deck floor scratch-free. So you can dump your mountain bike, kayak, tent and more.



BOOT LID COVERING

The lockable boot lid option gives you a place to keep all your stuff safe while protecting it from the vagaries of weather. You can also choose a soft-top option to cover the load compartment, or better still, a canopy to change the silhouette.



CANOPY



ROOF LIGHT



ROOF CARRIER



SIDE STEP



CHROME REAR NUDGE GUARD

Specifications

Xenon XT

EX 4x2

EX 4x4

Engine	2.2 L 16 Valve DOHC VTT DICOR (Variable Turbine Technology) (32 Bit Fully Electronically Controlled) (Direct Injection Common Rail)	
Capacity (cc)	2179	
Max. Output (PS) at rpm	140 @ 4000	
Max. Torque (Nm) at rpm	320 @ 1750-2700	
GEARBOX	G-76-5/4.1 - Synchronised with Overdrive	
SUSPENSION	Independent Double wishbone Parabolic Leaf Springs	
Front	Power steering	
Rear	Vacuum Assisted Independent Hydraulic Ventilated disc brake, Twin Rot Caliper Drum brake, Auto Adjusting Type	
STEERING		
BRAKES		
Front		
Rear		
DIMENSIONS (mm)		
Overall Length (mm) X Width (mm) X Height (mm)	5125 X 1800 X 1833	
Load body inside Length (mm) X Width (mm) X Height (mm)	1518 X 1414 X 405	
Wheel Base (mm)	3150	
Ground Clearance (mm)	200	
Turning circle Radius (m)	6	
Kerb weight (kgs.)	1900	
Load body load carrying capacity (kgs.)	260	
Gross Vehicle Weight (kgs) 4x4 / 4x2	2500	
FUEL TANK CAPACITY (litre.)	65	
SEATING CAPACITY	5	
TYRES & WHEELS	235/70 R 16, 105 S	
EMISSION STANDARD	BS IV	
DRIVE	4X2	4X4

SPECIFICATIONS

COMFORT & CONVENIENCE

HVAC with pollen filter	Y	Y
Power steering	Y	Y
Rear window demisting	Y	Y
Power windows at front & rear with Driver and co-driver Express down feature	Y	Y
Adjustable tilt Steering	Y	Y
Keyless Entry & Central Locking	Y	Y
Completely folding 2nd row seats	Y	Y
Adjustable Lumbar support seats	Y	Y
Cup Holders on Center console	Y	Y
Electrically adjustable side Rearview mirrors	Y	Y
Remote operated fuel flap	Y	Y
Front Roof Lamp cum Spot Reading lamps	Y	Y
Cigarette lighter	Y	Y
12 V Power Point on the floor console	Y	Y
Tachometer & Trip meter	Y	Y
Analog Clock	Y	Y
Illuminated Ignition Key slot & window winding switches	Y	Y
Puddle Lamps	Y	Y
Sunshade band on screen	Y	Y
Adjustable light intensity on instrument panel	Y	Y
Magazine Pockets on the Door Trims	Y	Y
Seatbelt - Front - height adjustable	Y	Y
Sun visor	Y	Y
Bottle Holder on Door Trim	Y	Y
Heated exterior rear-view mirror	Y	Y
Ash Tray	Y	Y

FEATURES

SAFETY & SECURITY

ABS with EBD	Y	Y
Door Intrusion Beam	Y	Y
Immobilizer	Y	Y
Door open Alarm	Y	Y
LSD Limited Slip Differential	Y	Y
Child Lock on rear door	Y	Y
Front brakes with bigger brake disc and calipers with Twin pot	Y	Y
Adjustable 3 Point seat & Lap Belts	Y	Y
Seat Belt unfasten Warning	Y	Y
Tubelless Tyres	Y	Y
Anti-Submarine seats	Y	Y
Door Open Ajar warning	Y	Y
Motorized Head Lamps adjustment	Y	Y
Fuel Gauge with Low fuel indicator warning	Y	Y
Antiglare Rear View Mirror	Y	Y
High Mount Stop Lamp	Y	Y
Provision for child seat anchorage on rear wall	Y	Y
Collapsible Steering Column	Y	Y
Fog light front and rear	Y	Y

STYLE

Interiors	Beige Two Tone	Beige Two Tone
Seats	Dual Tone Fabric	Dual Tone Fabric
Alloy wheel rims	Y	Y
Turn indicators on Outer Mirrors	Y	Y
Leather wrapped steering wheel	Y	Y
Clear lens Head lamps & tail lamps with multi focal reflectors	Y	Y
Stylized Roof Rails	Y	Y
Bumper	Body Coloured	Body Coloured
Body coloured handles & side view mirrors	Y	Y
Front Grill	Chrome	Chrome
Central console finish	Faux Wood	Faux Wood
Graphic instrument Cluster	White Backlight	White Backlight
Radio Antenna External	Y	Y
Black Tape on B Pillar	Y	Y
Pull Type Door Handle	Y	Y
Silver Finish Sump Guard	Y	Y
Complete floor carpet	Dark Beige	Dark Beige

COLOURS



QUARTZ BLACK



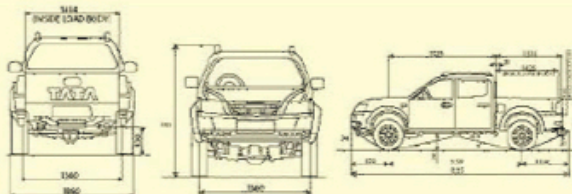
ARCTIC WHITE



IMPERIAL RED



ARCTIC SILVER



Visit us at www.xenonxt.com For any assistance, please call on our toll-free number, 1800-2097379 or e-mail us at avp@tatanmotors.com or contact: TATA MOTORS LTD, Passenger Car Business Unit, 1 Forbes, Dr. V B Gandhi Marg, Fort, Mumbai- 400 023, Ph.022 66158400 Xenon XT carries a warranty of 2 years or 75,000 kms*. Inset on a 2 + 1 year/1,50,000 kms* or 2 + 2 year/1,50,000 kms* extended warranty option (whichever is earlier). Accessories / props shown are not part of standard equipment. Use only Tata Motors genuine accessories. Colours and specifications are subject to change without notice. These are indicative for reference only. Colours shown may vary due to printing limitations. Models may be discontinued without prior intimation. Please check with your local dealer prior to placing order.