



SIMCA 8 1200



CRAO-8

SIMCA 8 1200

MORE THAN 110 KM. P. H. — MORE THAN 50 KM. TO THE GALLON — AMAZING AVERAGE SPEEDS

THE SIMCA-8 1200 is a car with **great average speeds**. Top speed has been set at 110 km. p. h., yet the engine will give a smooth ride and instantaneous accelerations. This car is even more brilliant than the previous Simca-8 whose outstanding qualities such as liveliness, absence of noise, road holding capacity, easy handling, have been brought to a still higher degree of perfection.

ENGINE 4 cylinders ♦ Bore and stroke 72x75 mm. ♦ Cubic capacity 1221 c. c. 40 b. h. p. ♦ Aluminium cylinder head ♦ Rocker-arm operated head valves ♦ Three-bearing crankshaft, dynamically balanced ♦ Constant oil cleaning by double oil-filter.

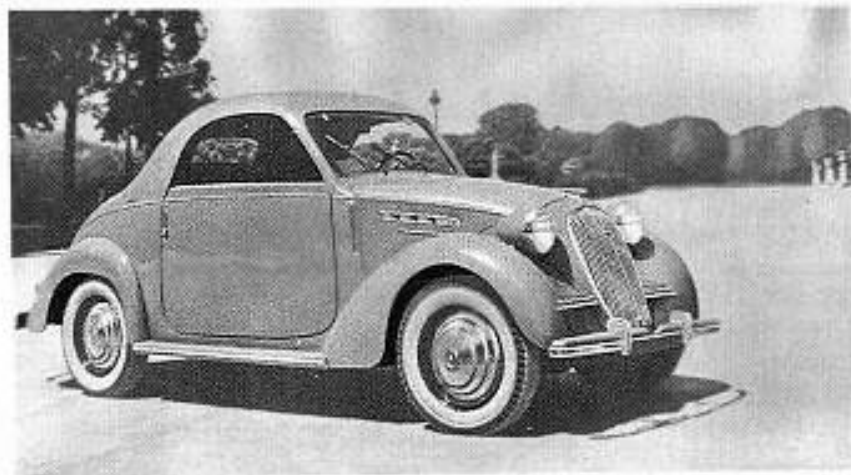
4 FORWARD SPEEDS Flashlike get-away and safe overtaking ♦ **Silent second, third and top synchromesh** ♦ Gear lever on steering column under wheel.

LOCKHEED HYDRAULIC BRAKES with fin-cooled aluminium brake drums, measuring 250 mm.

SUSPENSION Front wheels independently sprung, with vertical oil bath springs ♦ Rear springs of variable flexibility ♦ Telescopic shock absorbers ♦ Ride stabilizer.

ALL-STEEL BODY ♦ **12 VOLT ELECTRICAL SYSTEM, WITH HIGH CAPACITY GENERATOR** ♦ **40 LITRE PETROL TANK**

All specifications subject to change without notice



The Coupé



The Convertible