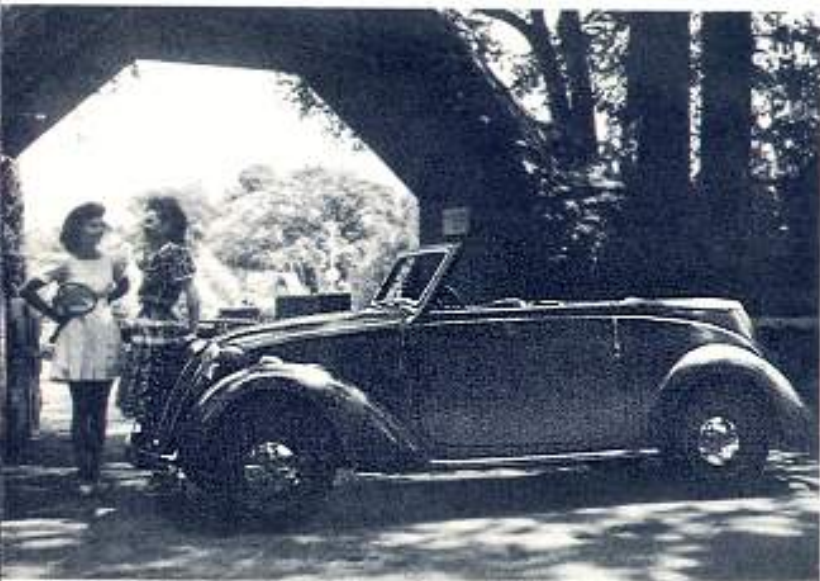
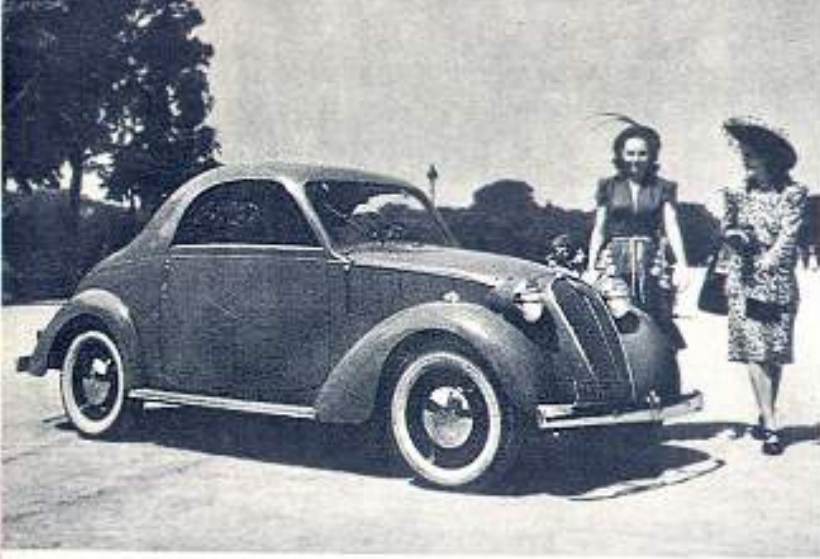




SEDAN
Simca 8





Coupé • Convertible Sedan

ALL STEEL BODY • 12 VOLT ELECTRICAL EQUIP-
 MENT • DOUBLE CURRENT GENERATOR
 • LUMINOUS WARNING DEVICE.

Simca 8

OVER 70 MILES PER HOUR • MORE THAN 25 MILES PER U. S. GALLON

ENGINE

4 cylinders, 2 3/4 x 3 in. • 66 1/2 in. • Brake horse-power 32 HP • Aluminium cylinder head with valve-inserts. Overhead valves and valve rockers • Down-draught carburetter • Three-bearing crankshaft. The Simca 8 engine is extraordinarily bright and shows remarkable flexibility. It has has flashing acceleration.

4 SILENT SPEEDS

Amazing starting, extraordinary speed and such economy in gas! Simca 8 would not be that "motor car" without its four speeds.

LOCKHEED HYDRAULIC BRAKES ON FOUR WHEELS

The brake-drums are made of aluminium alloy and are tin-cooled.

FRONT SUSPENSION

Independent front wheels with constant tread. Front springs in oil bath. Hydraulic shock-absorbers.

REAR SUSPENSION

Hydraulic shock-absorbers and anti-staggering stabilizer.

