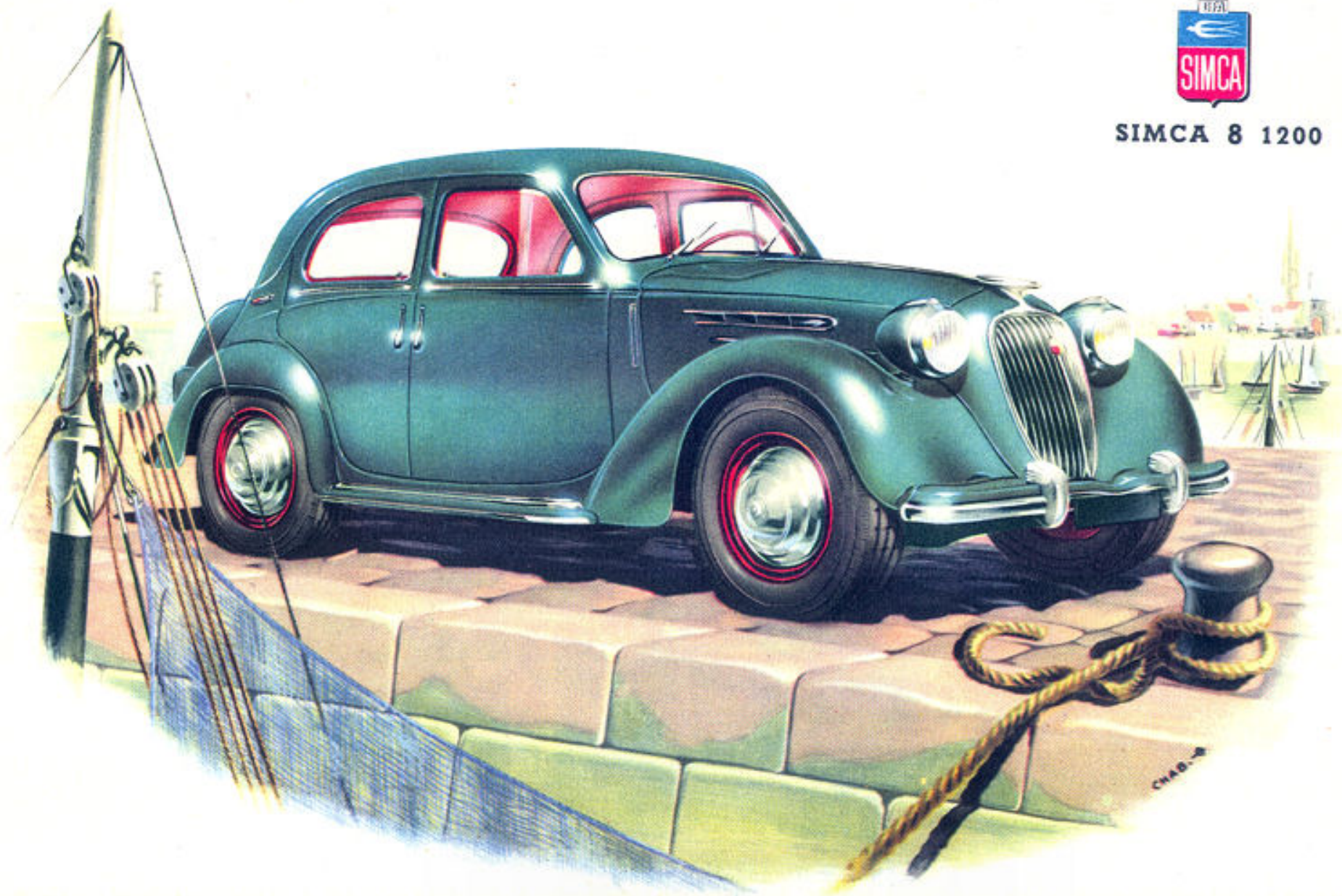




SIMCA 8 1200



CHAB-2

# SIMCA 8 1200

MORE THAN 68 M.P.H. TOP SPEED AND 31 MILES TO THE GALLON, WITH TRULY AMAZING AVERAGE SPEEDS!

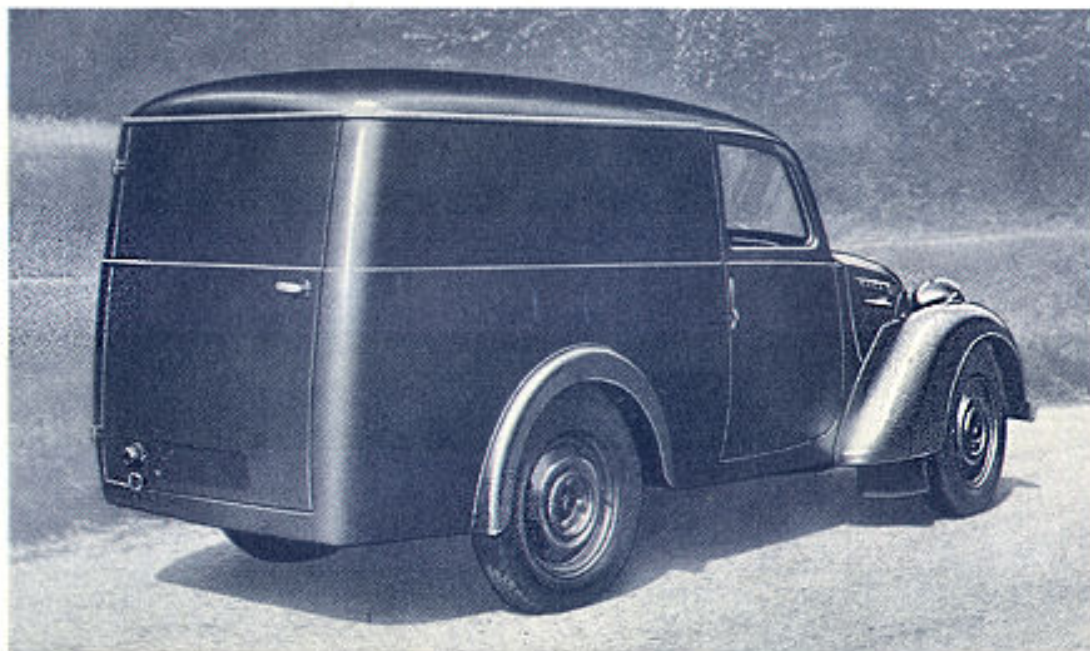
**THE SIMCA 8 1200** is a car with **great average speeds**. Top speed has been set at 68 miles per hour, but the response of the motor is instantaneous and its pick up truly remarkable. This car is even more brilliant than its predecessor — the Simca 8 whose qualities of liveliness, absence of noise, road holding and easy handling have now been surpassed.

**SIMCA 8 1200** — a car of quality, but in the popular price range.

**SPECIFICATIONS** : 4 cylinder 72 x 75, 1221 c. c. — brake horsepower, 40 — aluminium cylinder head with rocker-arm operated valves-in-head — three-bearing crankshaft dynamically balanced — four speeds with second, third, and top silent and synchronized — gear lever on column under steering wheel. Lockheed hydraulic brakes with fin-cooled aluminium brake drums, measuring 250 millimetres

**SUSPENSION** : front with vertical oil bath springs — rear springs of variable flexibility — telescopic shock absorbers — ride stabilizer. All-steel body, 12 Volt electrical system with double-duty generator, 35 litre petrol tank.

**THE SIMCA 8 1200** assures perfect performance both on the road and in town traffic. This is indeed a car combining smart appearance with outstanding performance and low running costs.



**SIMCA 8 1200 DELIVERY VAN**  
Payload : 1100 pounds.