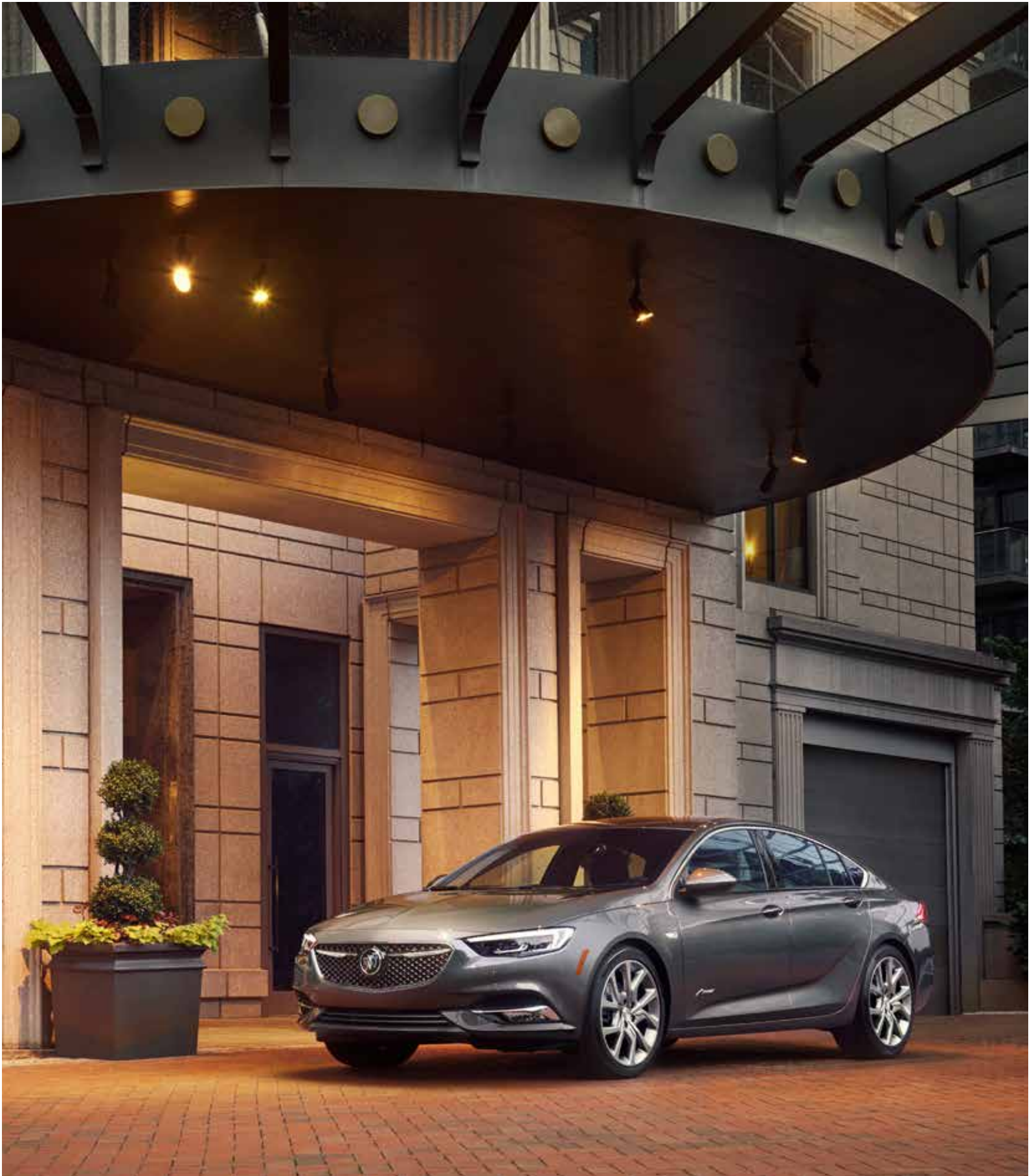




2019 BUICK REGAL



INNOVATIVE PERFORMANCE HAS A NEW IDENTITY



Debuting the First-Ever Regal Avenir. As the highest expression of Buick luxury, this turbocharged sedan masterfully merges Regal Sportback's innovative amenities with exclusive styling cues that reflect its elevated status. From 19-inch aluminum wheels with Pearl Nickel finish to quilt-stitched leather-appointed seats with contrasting French seam stitching, every Avenir detail affirms that the standards of luxury have just been raised.



Power. Versatility. Connectivity. Whichever qualities you desire, Regal GS has them in spades. This sport sedan delivers invigorating driving performance, thanks in part to its 310-hp V6 engine paired with standard intelligent All-Wheel Drive with active twin clutch. The engine works in tandem with a 9-speed automatic transmission, Brembo® front brakes and other features that pay off its racing-inspired appearance.

Regal Avenir shown in Smoked Pearl Metallic with available features.

Regal GS shown in Sport Red with available features.



PERFORMANCE PERSONIFIED

Even when it's parked, you'll know instinctively that Regal GS delivers an exhilarating driving experience. Every detail catches your eye and commands a closer look, from its exclusive 19-inch aluminum wheels with Technical Gray accents to its sport mesh grille with Piano Black finish. It's the type of aesthetic a car of this performance caliber deserves.

ASSERTIVE ACCENTS Distinctive lower rocker panels, front air scoops accented in a brushed-satin finish and a rear spoiler emphasize Regal GS's confident, aggressive style.

BREMBO FRONT BRAKES Regal GS offers stopping power that's just as impressive as its heart-racing performance, thanks to Brembo front brakes with dual-piston front calipers.

SPORTBACK OPENING Discreetly integrated into the GS design is an innovative rear sportback opening. Wide, deep and spacious, the opening can accommodate cargo in various shapes and sizes—especially when the rear seats are folded.





Regal GS interior shown in Ebony with Ebony accents and available features.

EVEN THE INTERIOR IS DESIGNED TO PERFORM

Enter Regal GS and take command of a cockpit that's tailored for the true driving enthusiast. From Interactive Drive Control to an available Head-Up Display, you'll appreciate its suite of innovative features. But the real fun comes the moment you hit the open road and discover the power and torque of its 310-hp V6 engine.

INTERACTIVE DRIVE CONTROL With three Interactive Drive Control settings—Touring, Sport and GS—your vehicle's steering response, suspension and other driving dynamics can be adjusted based on road conditions, or your mood.

HEAD-UP DISPLAY To help you stay focused on the road ahead, an available multicolor Head-Up Display projects key information onto the windshield, including readouts of the speedometer, tachometer, compass heading and available Forward Collision Alert¹ warnings.

INTELLIGENT ALL-WHEEL DRIVE To help maximize traction, intelligent All-Wheel Drive with active twin clutch sends power to the wheel(s) with the most grip in slippery weather conditions and helps improve cornering and acceleration on dry roads.

FIVE-LINK REAR SUSPENSION The five-link rear suspension balances agile handling with ride smoothness and quietness to help ensure excellent driving performance every time you shift into Drive.

¹Read the vehicle Owner's Manual for important feature limitations and information.



Regal GS interior shown in Ebony with Ebony accents and available features.

RECONFIGURABLE PERFORMANCE CLUSTER From speed to fuel level, an 8-inch diagonal reconfigurable performance cluster allows you to customize your view of important vehicle information based on your preferences.

PERFORMANCE SEATS The Regal GS-exclusive front performance seats are heated, ventilated and massaging. They also feature electronically adjustable lumbar support and manually adjustable thigh-support extensions to help you personalize your grip on the cabin—and the road.

GS DETAILS Open the door and you'll note the details that define the GS character: GS-exclusive sill plates with a matte-aluminum finish and trim on the doors and dash that gives the visual effect of carbon fiber.

9-SPEED AUTOMATIC TRANSMISSION To help make each drive seamless, Regal GS pairs its 310-hp engine with an advanced 9-speed automatic transmission. If you prefer more active engagement, you can manually shift through the gears, too.

A SPORT SEDAN FULL OF SURPRISES

With its athletic stance, innovative technologies and 250-hp 2.0L turbocharged engine, Regal Sportback is a premium sport sedan. Take a look beyond its available power moonroof and other striking features and you'll see Regal Sportback also offers something else: remarkable spaciousness. You'll be impressed by its 60/40 and available 40/20/40 split-folding rear-seat configurations, and simply amazed by the roominess of its discreetly integrated rear sportback opening. Intelligent cargo versatility—yet another way Regal Sportback offers innovation for everyday life.





DISTINCTIVE STYLING With its signature Buick grille, available LED headlamps and available distinctive wheel designs, Regal Sportback impresses from every angle.

ELEVATED REFINEMENTS Regal Sportback offers innovations that enhance every moment. Available features such as ambient lighting and heated, leather-appointed front seats put you and your passengers instantly at ease. An available heated, leather-wrapped steering wheel is expertly contoured to improve your command of the road.

QUIETTUNING™ TECHNOLOGY QuietTuning technology uses triple door seals, acoustic laminated glass in the windshield and front side windows, available Active Noise Cancellation, acoustic materials and many other measures to help reduce, block and absorb unwanted noise for an incredibly quiet driving experience.

BOSE® PREMIUM AUDIO SYSTEM The available Bose premium audio system emits clean, crisp audio.

IN-VEHICLE AIR IONIZER The new available in-vehicle air ionizer is designed to help keep the air in your cabin cleaner and fresher by reducing pollen, dust and debris.

Regal Avenir shown in Smoked Pearl Metallic with available features.



FIRST-EVER REGAL AVENIR

**THE HIGHEST
EXPRESSION OF
BUICK LUXURY**

The First-Ever Regal Avenir builds on the superbly crafted Regal Sportback to deliver a truly exceptional driving experience. From distinctive badging to the Avenir-signature mesh grille, exclusive design flourishes embrace the exterior. Inside, you'll find a cabin that performs at the highest levels of sophistication and refinement. Debuting Regal Avenir: a true luxury performance sedan.

CRAFTED TO A HIGHER CALIBER

QUILT-STITCHED SEATING Exclusive quilt-stitched leather-appointed seating adds distinctive texture to the Regal Avenir interior and emphasizes its sporty, sophisticated style. The seating is available in two colors: Ebony and exclusive Whisper Beige.

INNOVATIVE TECHNOLOGIES Regal Avenir comes standard with wireless smartphone charging,¹ built-in Navigation² and a Bose premium eight-speaker sound system to help you make the most of every drive.

EXCLUSIVE WHEELS Unique 19-inch aluminum wheels complement Regal Avenir's dynamic shape and are finished in Pearl Nickel for added visual emphasis.

AVENIR GRILLE With its intricate texture, Black Ice finish and mesh background featuring Buick's signature tri-shield insignia, the exclusive Avenir grille makes a confident statement wherever it goes.



¹The system wirelessly charges one PMA- or Qi-compatible mobile device. Some phones have built-in wireless charging technology and others require a special adapter/back cover. To check for phone or other device compatibility, see my.buick.com/learn or consult your carrier. ²Map coverage available in the United States, Puerto Rico and Canada.

Regal Avenir shown in Smoked Pearl Metallic with available features.

TECHNOLOGY THAT KEEPS YOU CONNECTED

Regal helps keep you and your passengers seamlessly connected and entertained with its suite of available built-in technologies.

NEW BUICK CONNECTED SERVICES With a range of available plans, Buick Connected Services seamlessly links your digital life to your vehicle. Starting with Connected Access,¹ you'll get standard connectivity that enables services in your vehicle. Current services include Vehicle Diagnostics and Buick Smart Driver, which analyze your driving data and give you tips on how to improve your driving habits. Add the Remote Access Plan² to start and stop or lock and unlock a properly equipped vehicle via the available myBuick mobile app.² You can add a monthly data plan to your account at any time that allows you to stay connected on the go with your available in-vehicle 4G LTE Wi-Fi[®] Hotspot.³

MYBUICK MOBILE APP² Powerful and easy to use, the available myBuick mobile app lets you remotely connect to your vehicle from almost anywhere when you subscribe to Buick Connected Services. When properly equipped, you can unlock and lock your doors, remote-start or -stop your engine and get real-time diagnostics that check your vehicle's fuel status, tire pressure,⁴ mileage and more. The myBuick mobile app is also Apple Watch[®]-compatible, so you can locate your Buick,⁵ remote-start or -stop the engine, honk the horn and flash the lights and get walking directions to where it's parked—all right from your wrist.

APPLE CARPLAY[™] COMPATIBILITY⁶ Just plug in your compatible iPhone[®] and you'll have easy access to your contacts, maps and apps that you're familiar with on your vehicle's color touch-screen. You can also have Siri[®] send and read your text messages, and you can listen to all of your content from iTunes,[®] Apple Music[™] and other compatible audio apps.



ANDROID AUTO[™] COMPATIBILITY⁷ Android Auto makes it easy to use the touch-screen display in your Regal to access your phone, texts and music. And with Google Maps, you can get voice-guided navigation, live traffic information, lane guidance and more while keeping your hands on the wheel and your eyes on the road.

BUILT-IN WI-FI[®] HOTSPOT³ An available built-in Wi-Fi[®] Hotspot supports up to seven devices from up to 50 feet away from the vehicle. So your passengers can use their favorite apps to stream movies, watch TV, play games, listen to music and check social media on the go.

¹Standard connectivity available only to original purchaser for 10 years. See onstar.com for details and further plan limitations. Does not include safety services. Connected Access services are subject to change. ²Requires compatible Apple[®] or Android[™] device and data connection. Remote services require paid plan. ³Service varies with conditions and location. Requires active OnStar service and data plan. Data plans provided by AT&T. ⁴Vehicle must be on or in accessory position for Wi-Fi[®] to function. ⁵Does not monitor spare tire. ⁶Service varies with conditions. Available in the U.S. only. ⁷Vehicle user interface is a product of Apple[®] and its terms and privacy statements apply. Requires compatible iPhone[®] and data plan rates apply. Apple CarPlay is a trademark of Apple, Inc. Siri, iPhone and iTunes are trademarks of Apple, Inc., registered in the U.S. and other countries. ⁸Vehicle user interface is a product of Google[™] and its terms and privacy statements apply. Requires the Android Auto app on Google Play and an Android-compatible smartphone running Android 5.0 Lollipop or higher. Data plan rates apply. Android Auto is a trademark of Google LLC.

ONSTAR SAFETY AND SECURITY

As you travel with the ones you care about most, available OnStar^{®1} is with you to empower every moment. With a paid OnStar service plan, you can have a 24/7 lifeline to specially trained Advisors, ready to help if you've been in a crash, your car's been stolen, you're lost or you need Roadside Assistance.²

EMERGENCY HELP WHEN IT MATTERS MOST Using built-in sensors, available Automatic Crash Response³ can connect you to an Emergency Medical Dispatch-Certified Advisor⁴ immediately after a crash to help get you the care you need, even if you can't ask for it. Using Injury Severity Prediction technology, these specially trained Advisors⁴ can notify first responders about the likelihood of serious injury so they can provide help right away. You can feel confident knowing you have a team, 24/7, to get you the assistance you need.

SECURITY YOU CAN COUNT ON If your vehicle is stolen, you can be assured OnStar Advisors are ready to take action with available Stolen Vehicle Recovery. Once a vehicle is reported stolen, OnStar Advisors can work with the police to help recover it. They can use GPS technology to pinpoint its location, slow the vehicle if conditions are safe and even prevent it from being restarted. And with available Theft Alarm Notification,⁵ if your vehicle alarm sounds, we can let you know via text, email or a phone call. One simple call puts a team into action to help recover your vehicle quickly and safely.

OnStar service plans and Connected Services have changed significantly. While many of the offered services are the same, available plans and pricing are different. Visit onstar.com to review all the details and limitations.

¹Visit onstar.com for coverage map, details and limitations. ²Roadside service provided by Allstate Roadside Services. ³OnStar plan, working electrical system, cell service and GPS signal required. OnStar links to emergency services. ⁴OnStar Advisors are certified by the International Academies of Emergency Dispatch. ⁵Requires armed GM factory-installed theft-deterrent system. Additional texting and data rates apply.





Regal Sportback Essence shown in Dark Moon Blue Metallic with available features.

DRIVE WITH CONFIDENCE

A comprehensive suite of available advanced safety features helps enhance your awareness of the road and surrounding vehicles to inspire peace of mind as you travel.

LANE CHANGE ALERT WITH SIDE BLIND ZONE

ALERT This available feature provides side-mirror alerts to help you avoid vehicles moving in or rapidly approaching your side blind zone during a lane-change maneuver.

REAR CROSS TRAFFIC ALERT When in Reverse, available Rear Cross Traffic Alert provides alerts to help you avoid approaching detected left or right cross traffic, such as when you're backing out of a parking space or driveway.

REAR PARK ASSIST When driving in Reverse at less than 5 mph, this available feature provides distance-to-object alerts to help you park and avoid colliding with nearby detected objects directly behind the vehicle during low-speed maneuvering.

FORWARD COLLISION ALERT If this available system detects that a front-end collision situation is imminent while following a detected vehicle, the system alerts you to a potential crash. It also alerts you if you are following a detected vehicle much too closely.

FRONT PEDESTRIAN BRAKING If available Front Pedestrian Braking detects that a pedestrian is directly ahead and a collision is imminent, and you have not applied the brakes, the system alerts you and, if necessary, automatically applies the brakes to help reduce the collision's severity or avoid the collision.

LANE KEEP ASSIST WITH LANE DEPARTURE

WARNING This available feature provides gentle steering wheel turns, and, if necessary, Lane Departure Warning alerts to help you avoid crashes due to unintentionally drifting out of your lane when you are not actively steering and your turn signal is not activated.

FORWARD AUTOMATIC BRAKING If this available system detects that a front-end collision situation is imminent while following a detected vehicle and you have not applied the brakes, the system automatically applies the brakes to help reduce the collision's severity. The system may even help avoid the collision at very low speeds.

ADAPTIVE CRUISE CONTROL-ADVANCED Available Adaptive Cruise Control-Advanced uses a radar-based system and Forward Automatic Braking to allow the vehicle to automatically follow a detected vehicle at your selected following gap while you steer.

PEDESTRIAN PROTECTION SYSTEM Also known as an "active hood," this safety feature is designed to help reduce injuries to pedestrians in the event of a frontal impact within a 16- to 30-mph speed range. When a pedestrian is detected during a frontal impact, the system is designed to lift the rear part of the hood to create more clearance between the hood and the engine compartment.

Safety or driver assistance features are no substitute for the driver's responsibility to operate the vehicle in a safe manner. The driver should remain attentive to traffic, surroundings and road conditions at all times. Visibility, weather and road conditions may affect feature performance. Read the vehicle Owner's Manual for more important feature limitations and information.

FEATURES							
● STANDARD ○ AVAILABLE — NOT AVAILABLE	REGAL (1SV)	PREFERRED	PREFERRED II	ESSENCE	AVENIR	GS	
2.0L TURBO 4-CYLINDER	●	●	●	●	●	—	
3.6L V6 DI DOHC WITH VVT	—	—	—	—	—	●	
FRONT-WHEEL DRIVE	●	●	●	●	●	—	
INTELLIGENT ALL-WHEEL DRIVE WITH ACTIVE TWIN CLUTCH	—	—	○	○	—	●	
KEYLESS OPEN AND START	●	●	●	●	●	●	
60/40 SPLIT-FOLDING REAR SEAT	●	●	—	—	—	—	
40/20/40 SPLIT-FOLDING REAR SEAT	—	—	●	●	●	●	
BLUETOOTH® TECHNOLOGY ¹	●	●	●	●	●	●	
HALOGEN HEADLAMPS WITH LED SIGNATURE LIGHTING DAYTIME RUNNING LAMPS	●	●	●	●	—	●	
QUIETTUNING™ TECHNOLOGY	●	●	●	●	●	●	
REAR VISION CAMERA ²	●	●	●	●	●	●	
STABILITRAK AND TRACTION CONTROL	●	●	●	●	●	●	
LEATHER-WRAPPED STEERING WHEEL	—	●	●	●	●	●	
8-WAY POWER DRIVER SEAT WITH 2-WAY POWER LUMBAR (INCLUDES 4-WAY POWER LUMBAR ON GS AND AVENIR)	—	●	●	●	●	●	
ACTIVE NOISE CANCELLATION	—	—	○ ³	○ ³	—	●	
BUICK INFOTAINMENT SYSTEM ⁴ WITH 8" DIAGONAL COLOR TOUCH-SCREEN	—	○ ⁵	●	●	●	●	
COLOR 4.2" DIAGONAL DRIVER INFORMATION CENTER (8" ON GS)	—	○ ⁵	●	●	●	●	
REMOTE START	—	○ ⁵	●	●	●	●	
FOG LAMPS	—	—	●	●	●	●	
HEATED LEATHER-WRAPPED STEERING WHEEL	—	—	●	●	●	●	
MOON WHITE INTERIOR AMBIENT LIGHTING	—	—	●	●	●	●	
LEATHER-APPOINTED SEATS	—	—	—	●	●	●	
HEATED FRONT SEATS	—	—	—	●	●	●	
8-WAY POWER FRONT-PASSENGER SEAT WITH 2-WAY POWER LUMBAR (INCLUDES 4-WAY POWER LUMBAR ON GS AND AVENIR)	—	—	—	●	●	●	
LANE CHANGE ALERT WITH SIDE BLIND ZONE ALERT ²	—	○	○	○	●	●	
LED HEADLAMPS WITH LED SIGNATURE LIGHTING DAYTIME RUNNING LAMPS	—	○	○	○	●	○	
REAR CROSS TRAFFIC ALERT ²	—	○	○	○	●	●	
AVENIR EXCLUSIVE							
EBONY OR WHISPER BEIGE LEATHER-APPOINTED, QUILT-STITCHED SEATING	—	—	—	—	●	—	
DISTINCTIVE BLACK ICE MESH GRILLE	—	—	—	—	●	—	
AVENIR-EMBOSSSED FRONT SILL PLATES	—	—	—	—	●	—	
19" ALUMINUM WHEELS WITH PEARL NICKEL FINISH	—	—	—	—	●	—	
GS EXCLUSIVE							
HEATED, VENTILATED FRONT BUCKET SEATS WITH MASSAGE, INTEGRATED HEAD RESTRAINTS AND POWER-ADJUSTABLE BOLSTERS	—	—	—	—	—	●	
19" ALUMINUM WHEELS WITH TECHNICAL GRAY ACCENTS	—	—	—	—	—	●	
BREMBO® FRONT BRAKES	—	—	—	—	—	●	
REAR DECKLID SPOILER, FRONT SCOOPS, GROUND EFFECTS AND PASS-THROUGH EXHAUST	—	—	—	—	—	●	
FRONT AND REAR PARK ASSIST ²	—	—	—	—	—	●	

PACKAGES													
● STANDARD ○ AVAILABLE — NOT AVAILABLE	REGAL (1SV)	PREFERRED	PREFERRED II	ESSENCE	AVENIR	GS							
SIGHTS AND SOUNDS PACKAGE Includes Navigation, ⁶ Bose® 8-speaker premium audio, HD Radio and for Preferred adds remote start and color Driver Information Center								—	○	○	○	●	○
DRIVER CONFIDENCE PACKAGE² (PREFERRED) Includes Lane Change Alert with Side Blind Zone Alert, Rear Park Assist, Rear Cross Traffic Alert, LED headlamps with auto leveling, cornering lamps and 18" aluminum wheels								—	○	—	—	—	—
DRIVER CONFIDENCE PACKAGE² (PREFERRED II) Includes LED headlamps with auto leveling, cornering lamps, Rear Park Assist, Rear Cross Traffic Alert, Lane Change Alert with Side Blind Zone Alert and wireless smartphone charging ⁷								—	—	○	—	—	—
DRIVER CONFIDENCE PACKAGE (ESSENCE AND AVENIR) Includes all features from Preferred II plus Memory Package, driver and front-passenger 4-way power lumbar seat adjuster and exterior heated, power-adjustable, driver-side auto-dimming mirrors								—	—	—	○	●	—
DRIVER CONFIDENCE PACKAGE II² Includes all features from Essence and Avenir above plus Adaptive Cruise Control—Advanced, Following Distance Indicator, Forward Collision Alert, Forward Automatic Braking, Lane Keep Assist with Lane Departure Warning and Front Pedestrian Braking								—	—	—	○	○	—
GS DRIVER CONFIDENCE PACKAGE II² Includes Adaptive Cruise Control—Advanced, Following Distance Indicator, Forward Collision Alert, Forward Automatic Braking, Lane Keep Assist with Lane Departure Warning, Front Pedestrian Braking and Head-Up Display								—	—	—	—	—	○
APPEARANCE PACKAGE Includes wireless smartphone charging, ⁷ LED headlamps with auto leveling and cornering lamps								—	—	—	—	—	○

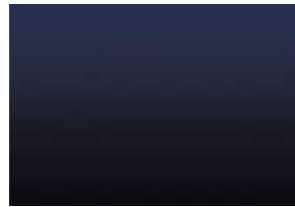
DIMENSIONS (INCHES)		CAPACITIES	
Wheelbase	111.4	Standard engine on Regal Sportback, Avenir	
Overall length	192.9	Standard engine on Regal GS	
Body width	73.3	Engine Type	2.0L 4-cylinder Turbo SIDI with VVT
Overall height	57.3	Horsepower	250 hp @ 5400 rpm
Track width, front/rear	62.8/63	Torque	260 lb-ft @ 2000-5200 rpm (FWD) 295 lb-ft @ 3000-4000 rpm (AWD) ⁸
Head room, first/second row	38.8/37.4	EPA-estimated mpg	22 city/32 hwy (FWD) 21 city/29 hwy (AWD) ⁸
Shoulder room, first/second row	56.9/55.4	Fuel Tank (approx.)	16.5 gallons
Hip room, first/second row	55.2/54.1	Cargo Capacity ⁹	With rear seats up: 31.5 cu. ft. With rear seats down: 60.7 cu. ft.
Leg room, first/second row	42.1/36.9		

¹Go to my.buick.com/learn to find out which phones are compatible with the vehicle. ²Read the vehicle Owner's Manual for important feature limitations and information. ³Standard with AWD. ⁴Functionality varies by model. Full functionality requires compatible Bluetooth and smartphone, and USB connectivity for some devices. ⁵Requires Sights and Sounds Package. ⁶Map coverage available in the United States, Puerto Rico and Canada. ⁷The system wirelessly charges one PMA- or Qi-compatible mobile device. Some phones have built-in wireless charging technology and others require a special adapter/back cover. To check for phone or other device compatibility, see my.buick.com/learn or consult your carrier. ⁸Not available on Avenir. ⁹Cargo and load capacity limited by weight and distribution.

EXTERIOR COLORS



Rioja Red Metallic¹



Dark Moon Blue Metallic¹



Summit White²



Smoked Pearl Metallic³



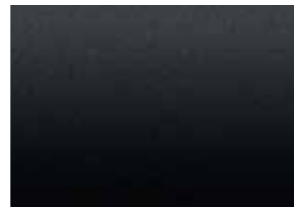
Sport Red⁴



White Frost Tricoat⁵



Quicksilver Metallic⁵



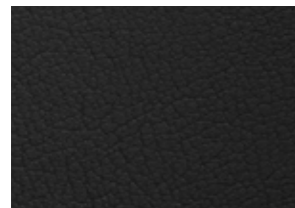
Ebony Twilight Metallic⁶

¹Additional charge, premium paint. Not available on Regal (1SV) or GS models. ²Not available on Avenir or GS models.

³Additional charge, premium paint. Not available on Regal (1SV). ⁴Available on GS model only.

⁵Additional charge, premium paint. Not available on Avenir model. ⁶Additional charge, premium paint.

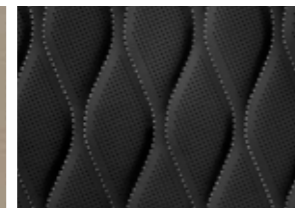
INTERIOR COLORS



Ebony Cloth⁷ or
Leather-Appointed
Seating⁸



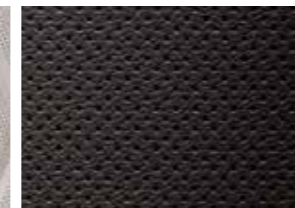
Shale Cloth⁹ or
Leather-Appointed
Seating⁸



Ebony Perforated
Quilt-Stitched
Leather-Appointed Seating¹⁰



Whisper Beige
Perforated Quilt-Stitched
Leather-Appointed Seating¹⁰



Ebony Perforated
Leather-Appointed
Seating¹¹

Ebony accents included with all interior colors.

⁷Not available on Regal (1SV). Available on Preferred and Preferred II. ⁸Available on Essence. ⁹Standard on Regal (1SV). Available on Preferred and Preferred II.

¹⁰Available on Avenir. ¹¹Exclusive to Regal GS.

WHEELS



17" 5-Spoke Aluminum
Standard on Regal (1SV)
and Preferred.



18" 5-Spoke Dynamic
Aluminum
Available on Preferred
with Driver Confidence
Package.



18" Machine-Faced
Aluminum With Painted
Pockets
Standard on Preferred II
and Essence.



19" Aluminum With Pearl
Nickel Finish
Exclusive to Avenir.



19" Aluminum With
Technical Gray Accents
Exclusive to Regal GS.



IMPORTANT WORDS

We have tried to make this catalog comprehensive and factual. We reserve the right, however, to make changes at any time, without notice, in prices, colors, materials, equipment, specifications, models and availability. Specifications, dimensions, measurements, ratings and other numbers in this catalog and other printed materials provided at the dealership or affixed to vehicles are approximations based on design and engineering drawings, prototypes and laboratory tests. Your vehicle may differ due to variations in manufacture and equipment. Since some information may have been updated since the time of printing, please check with your Buick dealer for complete details. Buick reserves the right to lengthen or shorten the model year for any product for any reason, or to start and end model years at different times. Certain vehicle features may lose their usefulness over time due to obsolescence from technological changes. Unless otherwise noted, all claims based on GM Mid-Car segment and latest available competitive information. Excludes other GM vehicles.

NEW-VEHICLE LIMITED WARRANTY This warranty is for GM vehicles registered in the USA. See your Buick dealer for terms and conditions.

4 years/50,000 miles (whichever comes first): Bumper-to-Bumper Limited Warranty. The entire vehicle is warranted for repairs, including parts and labor, to correct defects in materials or workmanship. The warranty covers towing to the nearest Buick dealership, and there is no deductible for warranty repairs during the warranty period. The warranty transfers automatically with vehicle ownership during the warranty period.

6 years/70,000 miles (whichever comes first): Transferable Powertrain Limited Warranty plus Roadside Assistance and Courtesy Transportation.

6 years/100,000 miles (whichever comes first): Body and sheet metal components are warranted against rust-through corrosion.

AN IMPORTANT NOTE ABOUT ALTERATIONS AND WARRANTIES Installations or alterations to the original equipment vehicle (or chassis) as distributed by General Motors are not covered by the General Motors New-Vehicle Limited Warranty. The special body company, assembler, equipment installer or upfitter is solely responsible for warranties on the body or equipment and any alterations (or any effect of the alterations) to any of the parts, components, systems or assemblies installed by GM. General Motors is not responsible for the safety or quality of design features, materials or workmanship of any alterations by such suppliers.

ASSEMBLY Buick vehicles and their components are assembled or produced by different operating units of General Motors, its subsidiaries or suppliers to GM worldwide. We sometimes find it necessary to produce Buick vehicles with different or differently sourced components than originally scheduled. Since some options

may be unavailable when your vehicle is assembled, we suggest that you verify that your vehicle includes the equipment you ordered or, if there are changes, that they are acceptable to you.

ENGINES Buick products are equipped with engines produced by GM Powertrain or other suppliers to GM worldwide. The engines in Buick products may also be used in other GM makes and models.

TRAILERING AND OFF-ROAD DRIVING INFORMATION Please go to buick.com and carefully review the vehicle Owner's Manual for important safety information about trailering or off-road driving in your vehicle.

ONSTAR AND BUICK CONNECTED SERVICES Connected vehicle services require a paid connected vehicle services plan or trial, connected hardware, vehicle electrical system (including battery), wireless service and GPS satellite signal to be available and operating for features to function properly. OnStar acts as a link to existing emergency service providers. Visit onstar.com for coverage map, details and system limitations.

A NOTE ON CHILD SAFETY Always use seat belts and the correct child restraint for your child's age and size, even with airbags. Even in vehicles equipped with the Passenger Sensing System, children are safer when properly secured in a rear seat in the appropriate infant, child or booster seat. Never place a rear-facing infant restraint in the front seat of any vehicle equipped with an active frontal airbag. See your vehicle Owner's Manual and child safety seat instructions for more safety information.

FLEET ORDERS Some standard content may be deleted with fleet orders. See dealer for details.

GMMOBILITY.COM (1-800-323-9935) GM Mobility offers financial assistance for eligible adaptive equipment to make automotive travel easier for persons with disabilities or special transportation needs. To learn more about special GM Mobility offers, visit gmmobility.com.

GM, the GM logo, Buick, the Buick emblem, OnStar, the OnStar emblem and the slogans, emblems, vehicle model names, vehicle body designs and other marks appearing in this catalog are the trademarks and/or service marks of General Motors, its subsidiaries, affiliates or licensors. The Facebook logo is a trademark of Facebook, Inc. The Twitter logo is a trademark of Twitter, Inc. Android, Android Auto, Google Play, YouTube and other marks are trademarks of Google LLC. Apple CarPlay, Siri, iPhone and iTunes are trademarks of Apple, Inc. The Instagram logo is a trademark of Instagram, Inc. ©2018 General Motors. All rights reserved.

To learn more about why Certified Service is the perfect companion for your Regal, visit mycertifiedservice.com.



BUICK

BUICK.COM

