

The Renault Mégane Coupé Range

2/96







**"If it's a sin to enjoy driving, say a prayer for me".**

**"Life is too short to drink house white".**

**"I can resist anything except temptation".**

**"Everything I like is immoral, fattening or exceeds the speed limit".**

**"Hard work never killed anybody - but why risk it?"**

**"Living well is the best revenge".**

**"I've been rich and I've been poor. Rich is best".**

For some unfortunates, the sole motivation to get into a motor car is an immediate requirement to get from point A to point B.

If you were one of these people, you would hardly be reading this brochure. (And you certainly wouldn't be looking at this photograph of the new Renault Mégane Coupé with that far-away look in your eyes).

No, your criteria for choosing a motor car extend far beyond mundane comparisons of price, fuel economy figures and boot space. Because while, in common with most of us, you need a car which provides reliable transport, what's equally important is the stimulation it delivers while doing so.

Does this mean that you put sensation before sense, style before substance? On the contrary. You're keenly aware of the practical issues which concern all responsible motorists in the nineteen nineties . . .

It's pretty obvious - from appearances and performance statistics, let alone the reports in the motoring press - that the svelte and dynamic Renault Mégane Coupé delivers exceptionally high levels of emotional satisfaction and sensory stimulation.

However, Renault's brilliant newcomer also has many surprisingly practical virtues.

For instance, while, predictably enough, the cabin places a high premium on the well-being (and efficient functioning) of the driver, it is also extremely spacious and remarkably well-equipped - pound for pound, no car in its class treats you and your passengers better.

Of course, no one would classify this sleek and decidedly racy coupé as a town runabout. Even so, the good natured Mégane displays no trace of temperament or fractiousness in bumper to bumper traffic. This is particularly true, perhaps, of the Automatic models.

Alternatively, if you like the control that a gear lever gives you, but would welcome a little extra ease and convenience, why not consider the optional Automatic 'Easy' clutch available





**"Freedom without responsibility is not freedom, merely licence".**



**"The world doesn't owe me a living".**



**"Clunk click, every trip".**




**"Courtesy costs nothing - but not everyone, it seems, can afford it".**




**"Be kind to the planet, it's the only one we've got".**



**"Children should be seen and not hurt".**



**"A penny saved is a penny earned".**

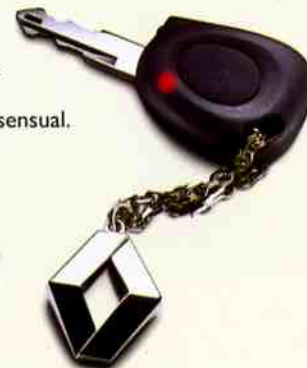


(later in the model year) on the 1.6e model?

Again, there's no denying the tactile thrills delivered by a car with the fire and spirit of the Mégane Coupé 16 Valve; the tremendous punch of that 150 bhp engine; the surefire stopping power of its anti-lock braking system; the grip and poise which derive from its outstandingly rigid chassis and programmed design rear suspension. At the same time, it could - and should - be argued that such features contribute massively to the car's safe and responsive road manners.

And its armoury of passive safety features - built around a cocooned passenger protection cell - is just as impressive.

Add to all that the Mégane Coupé's clean-burning and economical engines, as well as its extensive use of recyclable components, and you have a car which is surprisingly sensible as well as undeniably sensual.





RENAULT MEGANE COUPE

16V

**Looks. Comfort. Practicality.**  
**(Of course, it sports certain other qualities, too).**

Since it is powered by the race-inspired 150 bhp unit which thrust the Clio Williams into motoring history, you can take it as read that the performance of the Mégane Coupé 16 Valve more than lives up to the promises made by its elegantly purposeful appearance.

An outstandingly rigid chassis - plus a suspension set-up which combines the established virtues of MacPherson struts with programmed design rear suspension, and an anti-lock braking system - is a combination which allows the full potential of the engine to be safely and enjoyably exploited.

And, naturally, every detail inside the cabin - from the black-on-white instruments to the chunky sports steering wheel - is geared to the demands of the enthusiastic and knowledgeable driver.

All this might lead you to expect that little matters like safety, comfort, reliability and low running

costs have been sacrificed to performance. In those respects - and in those respects only - the brilliantly accomplished Mégane Coupé 16 Valve will (happily) not live up to your expectations.



Sports dash is clear and comprehensive.



Remote controls for HiFi - for extra convenience, greater safety.



A powerful and sophisticated HiFi.

**MEGANE COUPE 16V EQUIPMENT**

- Driver's side airbag.
- Side impact protection bars.
- Four, three-point seat belts.
- ABS anti-lock braking system.
- Front inertia reel seat belts, fitted with pretensioners and impact-absorbing Programmed Restraint System.
- Third brake light.
- Power assisted steering.
- Height-adjustable steering wheel.
- Height and lumbar adjustment of driver's seat.
- Fresh air recirculation system.
- Remote central locking operating doors and tailgate.
- Computer padlock engine immobiliser.
- Volumetric alarm.
- 60 watt HiFi with RDS, coded security, fingertip controls and separate frequency display.
- Rear wash-wipe.
- Trip computer.
- Heat insulating tinted glass.
- Electrics Pack: Electrically operated front windows with one touch operation on driver's side and anti-pinch safety switch. Electrically heated and operated door mirrors. 'Smart' windscreen wipers - wipe cycle automatically adjusts to speed. Engaging reverse gear automatically activates one sweep operation of rear wash-wipe. Slow-dim delayed courtesy lights. Exterior temperature gauge and larger front speaker grilles.
- Body-coloured bumpers and door mirrors.
- Anti-blind spot driver's side door mirror.
- Electric tilt and slide sunroof.
- Electric rear quarter windows.
- Split-folding rear seat.
- Integral front fog lamps.
- Four 'Dinard' alloy wheels with steel spare.
- Body coloured rear spoiler.

**OPTIONS**

- Air conditioning.
- Passenger's airbag.
- Compact disc multichanger.
- Leather upholstery.

**COLOUR RANGE**

- Sunflower Yellow.
- Capsicum Red.
- Monaco Blue.\*
- Pearl Black.\*
- Naples Red.\*
- Mist Green.\*

\* 'Supergloss'/'Pearlescent' metallic paint.



Electric tilt and slide sunroof.

**COUPE 2.0 16 VALVE**

1998 cc fuel injection, 150 bhp. 5-Speed manual gearbox. 44.1 mpg at a constant 56 mph. 0-62 mph in 8.6 seconds. Maximum speed 133 mph.





RENAULT MEGANE COUPE

2.0

**It satisfies the heart, the soul and the bank manager.**



Roof console houses map reading light.



Aspherical door mirror virtually eliminates blind spots.

Knowledgeable motorists might quibble over points of detail, but most would agree that a definition of what constitutes a sports coupé tallies pretty exactly with a description of the Renault Mégane Coupé 2.0.

For example, stunning good looks are clearly a fundamental qualification. And there is no need to elaborate on the Mégane's credentials in that area: a picture is, as they say, worth a thousand words.

rear seat  
not for long  
ward loads.



Dashing performance - coupled with pin-sharp handling and powerful braking - are, obviously, further essential ingredients. And the figures - 0 to 62 mph in well under 10 seconds and a maximum speed of 124 mph - make it plain that the Mégane Coupé is more than capable of holding its own in fast company. Whilst a test drive will provide convincing

and exhilarating proof of its dynamic qualities on the most challenging roads.

Of course, some ultra-purists might argue that a high purchase price - as well as high levels of noise, discomfort and fuel consumption - are inseparable parts of the sports coupé package. Renault designers, as you, your family and your bank manager will be delighted to know, couldn't agree less.



Electric front windows have anti-pinch safety switch.

**MEGANE COUPE 2.0 EQUIPMENT**

- Driver's side airbag.*
- Side impact protection bars.*
- Four, three-point seat belts.*
- Front inertia reel seat belts, fitted with pretensioners and impact-absorbing Programmed Restraint System.*
- Third brake light.*
- Power assisted steering.*
- Fresh air recirculation system.*
- Height-adjustable steering wheel.*
- Height and lumbar adjustment of driver's seat.*
- Remote central locking operating doors and tailgate.*
- Computer padlock engine immobiliser.*
- 60 watt HiFi with RDS, coded security, fingertip controls and separate frequency display.*
- Heat insulating tinted glass.*
- Electrics Pack: Electrically operated front windows with one touch operation on driver's side and anti-pinch safety switch. Electrically heated and operated door mirrors. 'Smart' windscreen wipers - wipe cycle automatically adjusts to speed. Engaging reverse gear automatically activates one sweep operation of rear wash-wipe. Slow-dim delayed courtesy lights. Exterior temperature gauge and larger front speaker grilles.*
- Electric rear quarter windows.*
- Body-coloured bumpers and door mirrors.*
- Anti-blind spot driver's side door mirror.*
- Electric tilt and slide sunroof.*
- Rear wash-wipe.*
- Split-folding rear seat.*
- Integral front fog lamps.*
- Four 14 inch 'Paimpol' alloy wheels with steel spare.*

**OPTIONS**

- 4-speed Automatic gearbox.*
- ABS anti-lock braking system.*
- Air conditioning.*
- Passenger's airbag.*
- Volumetric alarm.*
- Compact disc multichanger.*
- Leather upholstery.*

**COLOUR RANGE**

- Sunflower Yellow.*
- Capsicum Red.*
- Midnight Blue*
- Xerus Grey.\**
- Monaco Blue.\**
- Pearl Black.\**
- Naples Red.\**
- Fidji Green.\**
- Mist Green.\**

\* 'Supergloss'/'Pearlescent' metallic paint.

**COUPE 2.0**

1998 cc fuel injection, 115 bhp. 5-Speed manual gearbox. 44.8 mpg at a constant 56 mph. 0-62 mph in 9.5 seconds. Maximum speed 124 mph.

**COUPE 2.0 AUTOMATIC**

1998 cc fuel injection, 115 bhp. 4-Speed automatic gearbox. 44.8 mpg at a constant 56 mph. 0-62 mph in 10.7 seconds. Maximum speed 121 mph.





Shapely stern accommodates third brake light.

You're looking at the least expensive model in the Mégane Coupé range. Look at it more closely and you may find that hard to believe.

To begin with, a smaller engine and slightly less lavish specification



Rear wash-wipe gives single automatic sweep when reverse is engaged with optional Electrics Pack.

do not make the 1.6e model any less of a stunning visual treat than its more powerful and costlier stablemates. (And with a 0 to 62 mph time of 11.3 seconds and a top speed of 116 mph, it's hardly put to shame on the performance front, either).

The 1.6e is equipped with the same advanced suspension system, the same powerful front discs, the same sharp, power-assisted rack and pinion steering as other Mégane Coupés. So, obviously, it offers the same superlative standards of ride, grip and handling.

A surprising amount of boot space.



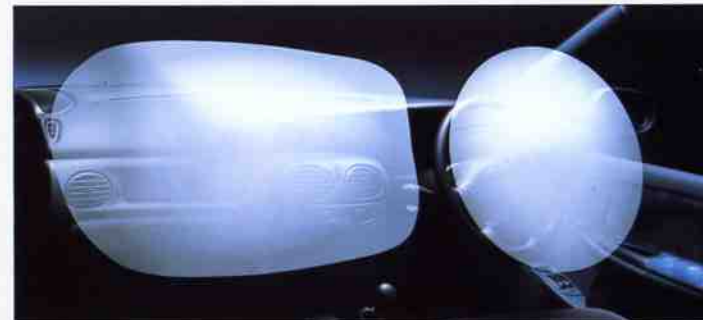
It's as beautifully built as other Mégane Coupés and incorporates all their advanced safety features. Furthermore, it costs even less to buy and to run.

In short, the modestly priced 1.6e denies you none of the important things which make the Mégane Coupé one of the most enjoyable, competent and desirable cars in its class.

**MEGANE COUPE 1.6e EQUIPMENT**

- Driver's side airbag.
- Side impact protection bars.
- Four, three-point seat belts.
- Fresh air recirculation system.
- Front inertia reel seat belts, fitted with pretensioners and impact-absorbing Programmed Restraint System.
- Third brake light.
- Power assisted steering.
- Height-adjustable steering wheel.
- Height and lumbar adjustment of driver's seat.
- Remote central locking operating doors and tailgate.
- Computer padlock engine immobiliser.
- 16 watt HiFi with coded security, fingertip controls and separate frequency display.
- Heat insulating tinted glass.
- Rear wash-wipe.
- Body-coloured bumpers.
- Anti-blind spot driver's side door mirror.
- Split-folding rear seat.
- Velour upholstery.
- Four 14-inch 'Cabourg' wheel trims.

Driver's airbag is standard - passenger airbag is available optionally.



**OPTIONS**

- Automatic 'Easy' clutch (later in model year).
- 4-speed Automatic gearbox.
- Passenger's airbag.
- ABS anti-lock braking system.
- Electric tilt and slide sunroof.
- Volumetric alarm.
- Electrics Pack: Electrically operated front windows with one touch operation on driver's side and anti-pinch safety switch. Electrically heated and operated door mirrors. 'Smart' windscreen wipers - wipe cycle automatically adjusts to speed. Engaging reverse gear automatically activates one sweep operation of rear wash-wipe. Slow-dim delayed courtesy lights. Exterior temperature gauge and larger front speaker grilles.

**COLOUR RANGE**

- Sunflower Yellow.
- Capsicum Red.
- Midnight Blue.
- Monaco Blue.\*
- Pearl Black.\*
- Xerus Grey.\*
- Naples Red.\*
- Fidji Green.\*
- Mist Green.\*

\* 'Supergloss'/'Pearlescent' metallic paint.

**COUPE 1.6e**

1598 cc fuel injection, 90 bhp. 5-Speed manual gearbox. 55.4 mpg at a constant 56 mph. 0-62 mph in 11.3 seconds. Maximum speed 116 mph.



1.6e



RENAULT MEGANE COUPE

1.6e

**Your pleasure can be unlimited, even if your budget isn't.**

RENAULT MEGANE COUPE TECHNICAL SPECIFICATIONS	Coupe 1.6e	Coupe 1.6e Automatic	Coupe 2.0	Coupe 2.0 Automatic	Coupe 16 valve
Number of doors	2	2	2	2	2
<b>ENGINE</b>					
Induction capacity cc	1598	1598	1998	1998	1998
Bore x stroke mm	79.5x80.5	79.5x80.5	82.7x93	82.7x93	82.7x93
Compression ratio	9.7:1	9.7:1	9.8:1	9.8:1	9.8:1
Power	kw ISO	66	83.5	83.5	108
	bhp DIN	90	115	115	150
	@revs/min	5000	5000	5400	6000
Torque	Nm ISO	137	168	168	185
	mkg DIN	14.3	17.5	17.5	19.3
	@revs/min	4000	4000	4250	4500
Cooling fan	Electric	Electric	Electric	Electric	Electric
<b>WEIGHTS</b>					
Kerb weight kgs	1010	1045	1045	1075	1095
Kerb weight lbs	2225	2302	2302	2368	2412
Gross vehicle weight kgs	1495	1530	1540	1570	1575
Gross vehicle weight lbs	3293	3370	3392	3458	3469
Towing weight (braked) kgs	1000	1000	1000	1000	1000
Towing weight (braked) lbs	2203	2203	2203	2203	2203
Towing weight (unbraked) kgs	540	560	560	575	585
Towing weight (unbraked) lbs	1189	1233	1233	1266	1289
<b>GEARBOX</b>					
Number of forward gears (man)	5	-	5	-	5
Number of forward gears (auto)	-	4	-	4	-
<b>BRAKING</b>					
Single servo assisted 'X' split system with ventilated discs on front and drums on the rear (discs all round on 16 valve). Load sensitive braking compensator.					
MacPherson front struts, coil springs and telescopic hydraulic dampers with lower wishbone and anti-roll bar. Trailing arms at rear, two transverse torsion bars (four on 2.0 and 16V models) with telescopic hydraulic dampers.					
<b>SUSPENSION</b>					
<b>STEERING</b>					
Power assisted rack and pinion.					
Turning circle between walls	11.0m (36.1 ft.)				
Turning circle between kerbs	10.5m (34.4 ft.)				
<b>TYRES</b>	175/65 x 14	175/65 x 14	175/65 x 14	185/60 x 14	195/50R x 16
<b>CAPACITIES</b>					
Luggage capacity	288 litres (10.17 cu ft.)				
Fuel tank	60 litres (13.2 gallons)				
<b>PERFORMANCE</b>					
Maximum speed mph(kph)	116 (187)	107 (173)	124 (200)	121 (195)	134 (215)
0-62 mph (0-100 kph) secs	11.3	13.5	9.5	10.7	8.6
Drag co-efficient	0.33	0.33	0.33	0.33	0.32
<b>FUEL CONSUMPTION</b>					
Mpg at constant 56mph	55.4	52.3	44.8	44.8	44.1
Litres/100km at constant 90 kph	5.1	5.4	6.3	6.3	6.4
Mpg at constant 75mph	42.8	41.5	35.8	35.8	34.9
Litres/100km at constant 120 kph	6.6	6.8	7.9	7.9	8.1
Urban cycle mpg	34.4	30.1	27.4	25.0	26.9
Urban cycle litres/100km	8.2	9.4	10.3	11.3	10.5
<b>SERVICING INTERVALS</b>					
Minor service miles	10000	10000	10000	10000	10000
Major service miles	40000	40000	40000	40000	40000

## RENAULT MEGANE COUPE COLOUR RANGE



Sunflower Yellow. (377)



Capsicum Red. (727)



Monaco Blue. (432)



Xerus Grey. (630)



Mist Green. (974)



Napolis Red. (783)



Midnight Blue (455)



Fidji Green. (941)

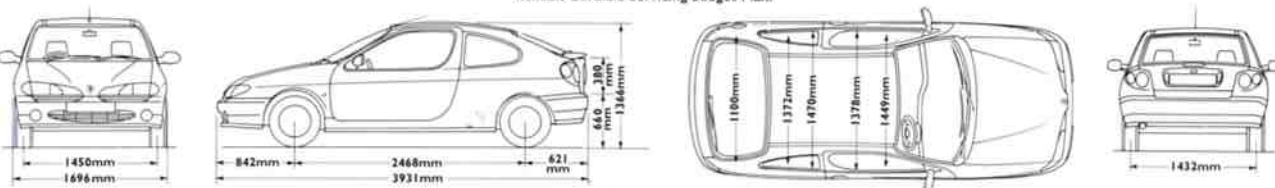


Pearl Black. (676)

Renault UK Ltd. reserves the right to modify its models without notice including their characteristics, specifications, equipment and accessories. Brochures may inevitably become out of date or inaccurate in some respects in that such characteristics, equipment, specifications or accessories may be changed after the publication date given below and can differ from the descriptions given. It is therefore necessary to check with the salesperson that the characteristics, specifications, equipment and accessories of the vehicle on order are as advertised. Matters contained in brochures are only intended to give the customer a general guide to the vehicle and should not be regarded as definitive terms. Publication date February 1996.

It should be noted that printing limitations do not permit these subtle shades to be shown with absolute accuracy. Only personal inspection of the Mégane at your Renault dealer will reveal it in its true colours.

All Renault Méganes have a 12-month unlimited mileage warranty, including free RAC membership and an 8-year anti-corrosion warranty; plus the option of 2-year extended warranty and Renault Cordiale Servicing budget Plan.



Please note that some dimensions may vary according to model.



# RENAULT

Renault UK Ltd, Freepost, P.O. Box 21, Thame, Oxon OX9 3BR.