

# RENAULT CLIO



**DRIVE THE CHANGE**



# WHO BETTER THAN RENAULT TO SERVICE YOUR RENAULT?



The 4+ package comes as standard with your new Renault car, van or Z.E. vehicle.\*

#### 4 - Warranty

Your vehicle is covered by a warranty package for up to 48 months. The first 2 years are unlimited mileage, followed by a further 2 years up to 100,000 miles. Your Dealer is able to repair or replace, without charge, parts that are found to have a material or assembly defect that is recognised by Renault.

#### 4 - Roadside Cover

Any problems and we'll provide emergency roadside repairs or tow you to the nearest Renault dealer. This service is provided in partnership with the Automobile Association (AA) and is available 24 hours a day, every day of the year. We'll provide home start and roadside for 48 months, with additional recovery, onward travel and European assistance for the first three years.

#### 4 - Servicing

Your vehicle is covered for free servicing during your first four years of ownership, or your first 48,000 miles (80,000 miles for vans), whichever comes first. That covers everything required in the manufacturer's minimum maintenance programme including parts, labour and VAT, but excluding normal wear-and-tear items, such as brake pads, windscreen wipers or tyres.

#### 4 - Finance Package

The 4+ package is available with or without a finance package, it's your choice. Simplify your cash flow with fixed monthly payments with Renault Selections\* or Hire Purchase finance packages. (\* Cars only). Cash offers also available.

## SERVICE INTERVALS

<b>18,000 miles / 1 year:</b> <ul style="list-style-type: none"> <li>• Twingo 1.2 16v 75</li> <li>• Mégane all engines except Renaultsport 265</li> <li>• Scénic all engines</li> <li>• Fluence Z.E.</li> <li>• Twizy</li> </ul>	<b>18,000 miles / 2 years*:</b> <ul style="list-style-type: none"> <li>• Clio all engines except 1.2 TCe 100 &amp; Renaultsport 200</li> </ul>
<b>12,500 miles / 2 years*:</b> <ul style="list-style-type: none"> <li>• Mégane Renaultsport 265</li> <li>• Twingo Renaultsport 133</li> </ul>	<b>12,000 miles / 2 years*:</b> <ul style="list-style-type: none"> <li>• Clio 1.2 TCe 100 &amp; Renaultsport 200</li> </ul>
<b>25,000 miles / 2 years*:</b> <ul style="list-style-type: none"> <li>• Trafic all engines</li> <li>• Master all engines</li> </ul>	
* Service required at the mileage or time interval shown, whichever is sooner.	

## ENGINES WITH OIL CONTROL SYSTEM (OCS)

- PETROL 1.2 TCe 100 & 115, Renaultsport 133 & 265
- All DIESEL engines

OCS monitors driving conditions that directly affect the quality of your engine oil, protecting your engine from excessive wear and possible bearing failure. Under certain conditions; low speeds, heavy traffic, door-to-door deliveries (engine turning with little distance travelled) or in high gear for long periods; sport driving, towing a caravan/trailer over 500 kg (engine turning at higher revolutions), the vehicle's service interval may be shortened and you will be alerted, via the instrument panel service indicator, that a Renault Service is required earlier (refer to Driver's Handbook for details).

## RENAULT ACCIDENT SUPPORT LINE - 0800 085 8005

The Renault Accident Support Line (RASL) is a dedicated service from Renault for all Renault drivers and their families, no matter what car they drive. This service is available at no cost to you, regardless of fault. RASL will deal with every aspect of your claim, from ensuring you are recovered to a Renault Approved Accident Repair Centre to dealing with all insurance companies giving you total convenience and peace of mind. 0800 085 8005 is the only number you need so please programme it into your phone and make sure that in the event of an accident you call us first and we will take care of everything.

RASL will:

- Collection of your car from the scene of an accident if unroadworthy
- Provide a like for like replacement car or courtesy car
- Repair your car using only Renault Approved Accident Repair Centres
- A 5 year repair guarantee
- Use only Renault Original Parts
- Ensure you do not have to pay a policy excess if the accident is not your fault

Or for more information on the Renault Accident Support Line Service just visit [www.renault.co.uk/rasl](http://www.renault.co.uk/rasl)

## RENAULT INSURANCE

A car as well designed as your Renault deserves an insurance policy to match. Renault Insurance has been specifically created to provide superb protection and your car. In addition to a very competitive premium, Renault Insurance also includes: Renault Genuine parts fitted in Renault Accident Repair Centres, protecting your 12 year anti-corrosion warranty; repairs guaranteed for 3 years; a courtesy car for the duration of any repairs - subject to availability when you use an approved repairer; payment by instalments - subject to status.

Renault Car Insurance:

0845 603 8256

[www.renaultinsurance.co.uk](http://www.renaultinsurance.co.uk)

Renault Van Insurance:

0845 603 8258

[www.renaultvaninsurance.co.uk](http://www.renaultvaninsurance.co.uk)

Renault Z.E. Insurance:

0800 500 3108

[www.renault-ze.com](http://www.renault-ze.com)

Lines open 8am – 8pm weekdays, 9am – 5pm Saturdays and 10am – 3pm Sundays. Calls may be recorded. All quotes are based on individual circumstance and subject to insurers underwriting criteria. Renault Insurance is arranged and administered by Equity Direct Broking Limited, which is authorised and regulated by the Financial Services Authority. Registered Office: Library House, New Road, Brentwood, Essex, CM14 4GD. Registered in England & Wales No. 6710272

## CUSTOMER RELATIONS

Renault knows the value of communicating with its customers and we have established effective ways to keep in touch with you. If after speaking to your local Renault dealership you are not completely satisfied, please contact the Renault UK Customer Relations Department on 08000 72 33 72 (Mon-Fri 9.00am to 5.30pm, except Weds 10.00am to 5.30pm. Closed on Bank Holidays).

You can also visit our website [www.renault.co.uk](http://www.renault.co.uk)

Or write to us at: Renault UK Ltd, The Rivers Office Park, Denham Way, Maple Cross, Rickmansworth, Hertfordshire, WD3 9YS.

Find out more about your vehicle at [www.e-guide.renault.com](http://www.e-guide.renault.com)

## RENAULT NETWORK SERVICES

No-one is better placed than Renault to maintain, fit and repair your Renault, fast. The Renault Minute (maintenance and repair with no appointment necessary) and Renault Rapide Bodycare (bumper scuffs, dings and dents, windscreen, stone chips and interior repairs...) services deliver the highest level of repair and maintenance and offer a full year's guarantee on Original Renault Parts. And don't forget to have a look at our wide range of additional equipment and accessories!

\* Vehicles are covered by a warranty package for up to 48 months. The first 2 years are unlimited mileage, followed by a further 2 years up to 100,000 miles. Please see the warranty terms and conditions ([www.renault.co.uk/warranty](http://www.renault.co.uk/warranty)) for further details. Servicing offer covers cars for 4 years or 48,000 miles, whichever comes first. Services must be carried out in line with the manufacturer's minimum maintenance programme requirements and servicing intervals, and can only be carried out at a Renault Approved outlet. Renault Assistance Roadside Cover is provided in association with the AA. Cover from month 0 to 36 includes assistance at the roadside and home, national recovery, onward travel and European cover. Cover from month 37 to 48 includes Roadside and Homestart (including a local tow to an authorised Renault dealer). The provider of this cover is the Automobile Association Limited. For Finance, guarantees and indemnities may be required. You must be at least 18 and a UK resident (excluding the Isle of Man and Channel Islands) to apply. Finance provided by RCI Financial Services Limited, PO Box 149, Watford WD17 1FJ. Available at participating dealers only. Not available in conjunction with any other schemes or finance offers, please check with your local dealer for information. Offers are available to retail and business customers (but exclude fleet customers with own terms), and are valid on new vehicles, at point of new vehicle registration, when ordered from 1<sup>st</sup> February 2012 until further notice. Visit [www.renault.co.uk/4plus](http://www.renault.co.uk/4plus)



**WHY RENAULT?  
WE'RE DRIVEN BY A PASSION TO MEET AND EXCEED PEOPLE'S NEEDS, AND THAT'S WHAT DRIVES THE INDUSTRY FORWARD. IT'S BEEN THAT WAY WITH US FOR OVER A HUNDRED YEARS. BUT IN TODAY'S RAPIDLY-CHANGING ENVIRONMENT, IT'S MORE IMPORTANT THAN EVER THAT WE SOURCE NEW SOLUTIONS THAT WILL SAFEGUARD ALL OUR FUTURES.**

We know that the car is at a turning point, it has to evolve whether you believe in global warming or not; to emit less in cities, to make less noise and to use increasingly scarce energy more efficiently.

At Renault we are working to create more affordable cars, with radically lower CO<sub>2</sub> emissions. For the widest possible audience. Today that's our collection of 'eco<sup>2</sup>' models. Eco<sup>2</sup> indicates that the vehicle produces CO<sub>2</sub> emissions lower than 120 g/km, it includes at least 7% recycled plastic in its plastic mass, and has been designed in such a way that 95% of the materials used could have a second life (recyclable for other use or as a source of energy). In addition, eco<sup>2</sup> means that our factories are ISO 14001 certified.

Starting this year there will be a groundbreaking range of electric vehicles, from a nippy town car to a comfortable family saloon and a small van. They will be affordable to run – you will be able to drive up to 100 miles using a battery that costs typically £3 to charge, and a lot less using cheaper tariffs. And parking and congestion charges should all be lower too.

We believe it's time to make the car a driver of progress once more. We are determined to drive that change. Soon you will be able to join us.

**RENAULT. DRIVE THE CHANGE.**



**CLIO:**  
**3 CARS WITH A BRAND NEW DESIGN AND FIVE STAR FEATURES.**  
**A BENCHMARK FOR THE WAY AHEAD, WITH DIRECTIONS**  
**BY CARMINAT TOMTOM.**



Clio arrives, oozing class. A flash of sunlight outlines the elegant silhouette, the purposeful shoulders, those streamlined headlights. Clean contours cut through the air gracefully. Sporty and stylish by nature, Clio lives up to its reputation as the small car with big car attributes.



You could be on the road which brings them back from school every afternoon. It could be a trip like any other... or it could be a surprise weekend away. Whatever your journey, the sleek Clio Sport Tourer will get you there in style.

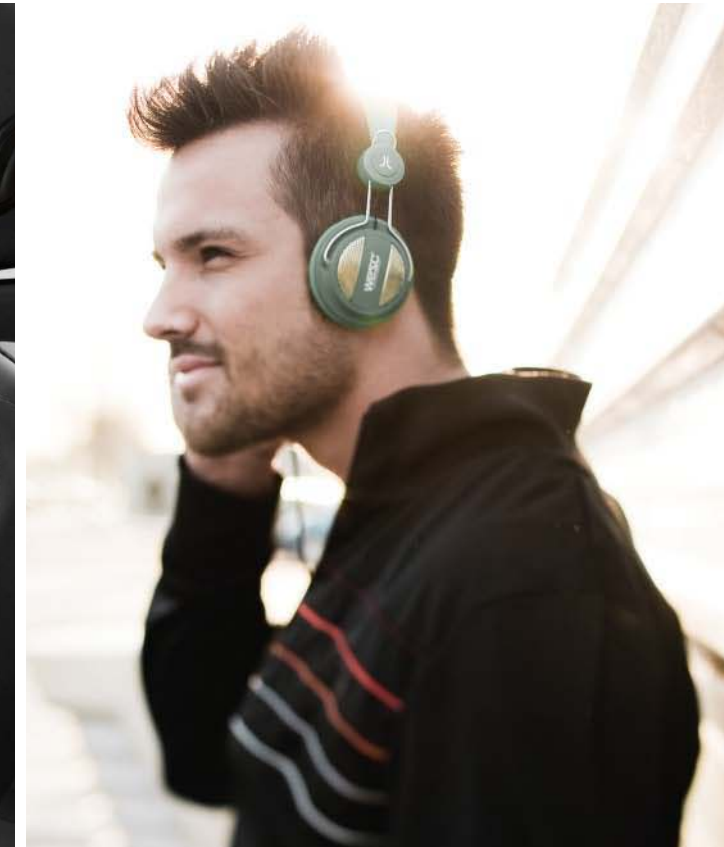
**CLIO SPORT TOURER**  
STYLE AND SPACE

# INSPIRED SPORTY DESIGN



# INNER BEAUTY

COMFORT AND TECHNOLOGY.



With Clio, the interior is supremely comfortable and attractive. Everything is positioned so it's easy to reach, including the Carminat TomTom. Carminat TomTom makes navigation simple. It is Renault's latest GPS navigation system and is the fruit of an exclusive partnership between Renault and TomTom, to produce a fully integrated navigation unit at an affordable price. And now, Renault offers Carminat TomTom® LIVE. Developed with TomTom®, the globally recognised specialist, the Carminat TomTom® LIVE system brings together a complete range of high-performance and accessible functions, with its intuitive remote control. With one safe movement, you can benefit in real time from high definition traffic information or mobile speed camera warnings. It's easy to update too, with a wide range of online services.

## SAFETY



1

### 1. FIXED CORNERING LIGHTS

These lights activate automatically (under 37mph) when cornering to give you a wider field of vision.



2

### 2-3. FRONT AND REAR FOG LIGHTS

See and be seen in low visibility conditions.



3

### 5. ISOFIX CHILD SEAT MOUNTING POINTS

The ISOFIX 3-point mounting points on the rear outer seats allow the safe and secure installation of child safety seats. (DuoPlus seat available in the accessories range).



4

### 6. FRONT HEADRESTS

The Renault SRP (System for Restraint and Protection) incorporates new generation headrests that offer maximum protection in the event of a rear impact.



5



6

### 4. DEACTIVATION OF FRONT PASSENGER AIRBAGS

Enables a child seat to be fitted in the front in complete safety.

### 5. BLUETOOTH CONNECTIVITY

The hands-free Bluetooth® adds to your safety and convenience by avoiding use of a hand-held mobile telephone whilst driving.

### 1. LIVE SERVICES

Benefit in real time from high definition traffic information from TomTom® Live innovation and technology: mobile speed camera warnings\*, searching for places of interest and 5 day weather forecasts...

### 2. CARMINAT TOMTOM® LIVE

Carminat TomTom® LIVE is Renault's new onboard, connected navigation system. Still just as affordable and particularly simple, it brings together a complete range of high-performing functions. Its remote control provides intuitive, safe access to the various functions. Easy to use, the TomTom® Home application offers a large range of downloadable services.

### 3. NEW DYNAMIQUE FRONT SEATS

Travel in comfort and safety with the elegant and stylish new design Dynamique seats.

### 4. MULTI-FUNCTIONAL TUNEPPOINT

The multi-functional TunePoint allows you to connect your personal music player to the radio of your Clio. Use either the USB or jack to connect and control your personal MP3 player using the fingertip remote controls on the steering wheel.

## NAVIGATION / COMFORT



1



2



3



4



5



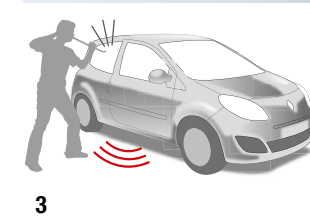
## ACCESSORIES



1



2



3



4

### PROTECTION AND COMFORT

Keep you and your Renault safe and sound

#### 1. EXPRESSION MATS

Mats are an essential accessory to protect your car from everyday dirt and debris. Designed to fit perfectly into your Renault, the inbuilt stud fixings ensure they fit safely with no slipping.

#### 2. PARKING SENSORS

This clever system detects objects behind your vehicle as well as making parking in the smallest spaces so much easier. Ultrasonic sensors in the bumper emit a beep and as objects get closer, the sound becomes louder and more frequent.

#### 3. ALARM

Fully compatible with the electronics in your Clio, the Thatcham-approved Renault alarm offers protection from attempted break-ins and detects any movement within the cabin.

#### 4. BOOT LINER

This convenient boot liner protects your boot from day to day wear and tear. It is designed to fit perfectly into the boot of your Clio and is made from semi-rigid plastic so it can be easily washed down.



10

### SPORT AND DESIGN

Make your Renault undeniably yours

#### 5-6. SPORT STYLING PACK

Enhance the natural design of the car by adding a Sport Styling Pack which emphasises the stunning appearance. Includes front, side and rear skirts and false central exhaust.

#### 7. LEATHER UPHOLSTERY

Transform your Clio with our range of eye-catching leather interiors. This luxurious accessory is a great way to give your new Clio a seductive blend of sporty elegance. Available in Biscotto, Rosso Red and Carbon Black.

### TECHNOLOGY

Cutting edge technology in your Renault

#### 8. BLUETOOTH CONNECTIVITY

The Parrot MKi9100 is a Bluetooth hands-free system with an OLED screen. A wireless remote control lets you control all functions. As well as conventional phone functions - like pick up, hang up, and dual calls - the Parrot MKi9100 boasts cutting-edge features like automatic phonebook synchronisation and multi-speaker voice recognition.

NB: Your hands-free system is only intended to make communicating easier by reducing the risk factors, but it can't remove them completely. We recommend you always pull over, even when using hands-free.

#### TOURING

You, your Renault and the kitchen sink!

#### 9. QUICK RELEASE TOW BAR

Whether you need to pull a trailer, a caravan or simply mount one of our bike racks, Renault has the tow bar for you. This tow bar preserves the aesthetic lines of your Clio, thanks to a tow ball that can be removed in seconds without the use of tools.

#### 10. ROOF BARS, SKI RACK, BIKE RACK

Whether you are planning a ski trip or just a day out with the bikes, we have an accessory for you. Designed to work in harmony with your car, these aluminium Touring Line roof bars are lightweight and easy to mount. Our bike racks can be mounted on the roof or on a tow bar. They are City Crash tested to ensure maximum safety and security.



5



6



7



8



9



## TRIMS



### EXPRESSION+

#### Interior

- Air conditioning
- Bluetooth connectivity with hands free system
- 'Sport' cloth upholstery with satin chrome interior styling
- 'Soft touch' dashboard
- Height adjustable driver's seat

#### Exterior

- 15" 'Del Arte' alloy wheels
- Electric and heated door mirrors
- Satin chrome styling on front bumper insert and side door moulding tip



### DYNAMIQUE TOMTOM

#### As per Expression+, plus:

#### Interior

- Carminat TomTom Live satellite navigation
- Front curtain airbags
- Cruise control and speed limiter
- 'Luxe' upholstery with gloss black interior styling
- Leather steering wheel and gear stick

#### Exterior

- 16" alloys in 'Gunmetal'
- 'Gunmetal' styling on door mirrors, front bumper insert and side door moulding tip
- Automatic headlights and front windscreen wipers





### GT LINE TOMTOM®

As per Dynamique TomTom®, plus:

#### Interior

- ESC (Electronic Stability Control)
- Climate control
- Multi-functional TunePoint (USB connection for MP3 players)
- Electric rear windows

#### Exterior

- 16" 'Canasta Diamond Black' alloy wheels
- Rear spoiler (3 and 5 door only)
- Rear and tailgate privacy glass
- Rear parking sensors

## EQUIPMENT

### CORE FEATURES 3 DOOR AND 5 DOOR

<b>SAFETY AND SECURITY</b> <ul style="list-style-type: none"> <li>• ABS with EBD (Electronic Brake Distribution)</li> <li>• Airbags - front and side driver's and passenger's</li> <li>• Airbag deactivation - front passenger</li> <li>• Anti drill door locks and locking fuel cap</li> <li>• Deadlocking</li> <li>• Insurance approved engine immobiliser (Thatcham Category 2)</li> </ul>	<ul style="list-style-type: none"> <li>• ISOFIX child seat fixing points</li> <li>• R.A.I.D. (Renault Anti Intruder Device) automatic door locking</li> <li>• Tyre inflation kit</li> </ul>	<ul style="list-style-type: none"> <li>• Headrests - driver's and passenger's front height adjustable</li> <li>• Multi-functional trip computer</li> <li>• Remote central locking</li> <li>• Steering wheel - height adjustable</li> <li>• Windows - tinted</li> <li>• 4 x 20W RDS radio CD player with AUX input and fingertip remote control</li> </ul>
<b>ADDITIONAL STANDARD EQUIPMENT TO CORE FEATURES</b> <ul style="list-style-type: none"> <li>• Alloy wheels - 15" 'Del Arte' (15" 'Aero' wheel trims on 94g version)</li> <li>• Air conditioning</li> <li>• Bluetooth connectivity</li> <li>• Bumpers - body coloured</li> </ul>	<ul style="list-style-type: none"> <li>• Door mirrors - electric</li> <li>• Headrests - 2 rear height adjustable</li> <li>• Front fog lights</li> <li>• Luxurious soft-touch dashboard</li> <li>• Satin chrome exterior styling on front bumper and side door moulding</li> <li>• Satin chrome interior styling on dashboard, air vents and door handles</li> </ul>	<ul style="list-style-type: none"> <li>• Seat - height adjustable driver's</li> <li>• Seats - 60:40 split folding rear seats</li> <li>• Upholstery - 'Sport' cloth in black</li> <li>• Windows - electric front</li> </ul>
<b>ADDITIONAL STANDARD EQUIPMENT TO EXPRESSION +</b> <ul style="list-style-type: none"> <li>• Alloy wheels - 16" 'Solonia' in gunmetal</li> <li>• Airbags - front curtain</li> <li>• Automatic light sensitive headlights</li> <li>• Automatic rain sensitive windscreen wipers</li> <li>• Carminat TomTom® Live satellite navigation system</li> </ul>	<ul style="list-style-type: none"> <li>• Cruise control</li> <li>• Door mirrors - Gunmetal</li> <li>• Gear knob - leather</li> <li>• Gloss black interior styling on dashboard, centre console and air vents</li> <li>• Gunmetal exterior styling on front bumper and side door moulding</li> <li>• Headrests - 3 rear height adjustable</li> </ul>	<ul style="list-style-type: none"> <li>• 'Luxe' upholstery in dark carbon</li> <li>• Speed limiter</li> <li>• Steering wheel - leather</li> <li>• Windows - front electric with driver's one touch control and anti-pinch function</li> </ul>
<b>ADDITIONAL STANDARD EQUIPMENT TO DYNAMIQUE TOMTOM®</b> <ul style="list-style-type: none"> <li>• Alloy wheels - 16" 'Canasta Diamond Black'</li> <li>• Climate control</li> </ul>	<ul style="list-style-type: none"> <li>• Door mirrors - electrically folding</li> <li>• ESC (Electronic Stability Control) with traction and understeer control</li> <li>• Parking sensors - rear</li> <li>• USB connection</li> </ul>	<ul style="list-style-type: none"> <li>• Windows - electric rear</li> <li>• Windows - privacy glass on rear and tailgate</li> <li>• Rear spoiler</li> </ul>

EXPRESSION +

DYNAMIQUE TOMTOM

GT LINE TOMTOM

### CORE FEATURES SPORT TOURER

<b>SAFETY AND SECURITY</b> <ul style="list-style-type: none"> <li>• ABS with EBD (Electronic Brake Distribution)</li> <li>• Airbags - front and side driver's and passenger's</li> <li>• Airbag deactivation - front passenger</li> <li>• Anti drill door locks and locking fuel cap</li> <li>• Deadlocking</li> <li>• Insurance approved engine immobiliser (Thatcham Category 2)</li> </ul>	<ul style="list-style-type: none"> <li>• ISOFIX child seat fixing points</li> <li>• R.A.I.D. (Renault Anti Intruder Device) automatic door locking</li> <li>• Tyre inflation kit</li> </ul>	<ul style="list-style-type: none"> <li>• Multi-functional trip computer</li> <li>• Remote central locking</li> <li>• Steering wheel - height adjustable</li> <li>• Windows - tinted</li> <li>• 4 x 20W RDS radio CD player with AUX input and fingertip remote control</li> <li>• Rear spoiler</li> </ul>
<b>ADDITIONAL STANDARD EQUIPMENT TO CORE FEATURES</b> <ul style="list-style-type: none"> <li>• Alloy wheels - 15" 'Del Arte'</li> <li>• Air conditioning</li> <li>• Bluetooth connectivity</li> <li>• Bumpers - body coloured</li> </ul>	<ul style="list-style-type: none"> <li>• Door mirrors - electric</li> <li>• Headrests - 2 rear height adjustable</li> <li>• Front fog lights</li> <li>• Luxurious soft-touch dashboard</li> <li>• Satin chrome exterior styling on front bumper and side door moulding</li> </ul>	<ul style="list-style-type: none"> <li>• Satin chrome interior styling on dashboard, air vents and door handles</li> <li>• Seat - height adjustable driver's</li> <li>• Seats - 60:40 split folding rear seats</li> <li>• Upholstery - 'Sport' cloth in black</li> <li>• Windows - electric front</li> </ul>
<b>ADDITIONAL STANDARD EQUIPMENT TO EXPRESSION +</b> <ul style="list-style-type: none"> <li>• Alloy wheels - 16" 'Solonia' in gunmetal</li> <li>• Airbags - front curtain</li> <li>• Automatic light sensitive headlights</li> <li>• Automatic rain sensitive windscreen wipers</li> <li>• Carminat TomTom Live satellite navigation system</li> </ul>	<ul style="list-style-type: none"> <li>• Cruise control</li> <li>• Door mirrors - Gunmetal</li> <li>• Gear knob - leather</li> <li>• Gloss black interior styling on dashboard, centre console and air vents</li> <li>• Gunmetal exterior styling on front bumper and side door moulding</li> <li>• Headrests - 3 rear height adjustable</li> </ul>	<ul style="list-style-type: none"> <li>• 'Luxe' upholstery in dark carbon</li> <li>• Speed limiter</li> <li>• Steering wheel - leather</li> <li>• Windows - front electric with driver's one touch control and anti-pinch function</li> </ul>
<b>ADDITIONAL STANDARD EQUIPMENT TO DYNAMIQUE TOMTOM®</b> <ul style="list-style-type: none"> <li>• Alloy wheels - 16" 'Canasta Diamond Black'</li> <li>• Climate control</li> </ul>	<ul style="list-style-type: none"> <li>• Door mirrors - electrically folding</li> <li>• ESC (Electronic Stability Control) with traction and understeer control</li> <li>• Parking sensors - rear</li> </ul>	<ul style="list-style-type: none"> <li>• USB connection</li> <li>• Windows - electric rear</li> <li>• Windows - privacy glass on rear and tailgate</li> </ul>

EXPRESSION +

DYNAMIQUE TOMTOM

GT LINE TOMTOM

# TECHNICAL SPECIFICATIONS

	1.2 16V 75	1.2 TCe 100	1.6 VVT 111 Auto	RENAULT eco dCi 88 FAP	RENAULT eco dCi 88 ECO*
Engine Type	Euro 5	Euro 5	Euro 5	Euro 5	Euro 5
<b>ENGINE</b>					
Induction capacity	(cc) 1149	1149	1598	1461	1461
Bore x stroke	69 x 76.8	69 x 76.8	79.5 x 80.5	76 x 80.5	76 x 80.5
No of cylinders/valves	4 in line/16	4 in line/16	4 in line/16	4 in line/8	4 in line/8
Compression ratio	9.8 : 1	9.8 : 1	9.8 : 1	17.9 : 1	17.9 : 1
Maximum power	kw ISO (hp DIN) 55 (75) at 5500	76 (105) at 5500	82 (111) at 6000	65 (88) at 4000	65 (88) at 4000
Maximum torque	Nm ISO (mkg DIN) 107 at 4250	155 at 3500	151 at 4250	200 at 1750	200 at 1750
Injection type	Multipoint Sequential	Multipoint Sequential	Multipoint Sequential	Direct Commonrail Injection	Direct Commonrail Injection
Fuel type	Unleaded Petrol	Unleaded Petrol	Unleaded Petrol	Diesel	Diesel
Catalytic converter	Standard	Standard	Standard	Standard	Standard
<b>GEARBOX</b>					
Type	JH3 128	JH3 312	DP0 074	JR5 306	JR5 353
Number of forward gears	5	5	4	5	5
Vehicle speeds (mph) at 1000 rpm: in 1 <sup>st</sup> gear	4.17	5.13	5.32	5.55	9.92
in 2 <sup>nd</sup> gear	7.59	9.35	9.67	10.1	16.92
in 3 <sup>rd</sup> gear	11.15	14.48	14.49	15.66	26.21
in 4 <sup>th</sup> gear	15.09	19.79	20.39	22.11	37.02
in 5 <sup>th</sup> gear	18.93	25.92	-	30.03	50.28
<b>STEERING</b>					
Power assisted	Variable Electric as Standard				
Turning circle between kerbs/walls	(m) (tyre width)	10.3/10.6 (165) - 10.7/11 (185) - 11.3/11.5 (195)			
Number of turns lock to lock (tyre width)		3 (165)	-	-	-
		2.95 (185)	2.95 (185)	2.95 (185)	2.95 (185)
		2.84 (195)	2.84 (195)	2.84 (195)	2.84 (195)
<b>SUSPENSION</b>					
Front	MacPherson type with rectangular shaped lower arm and anti-roll bar/Renaultsport version: independent front suspension				
Rear	Torsion beam with programmed deflection - coil springs				
<b>WHEELS/TYRES</b>					
Wheels	5.5 J 15" Steel/6 J 15" Steel or Alloy				
Tyres (15" wheels)	165/65 R15 81T	185/60 R15 84H	185/60 R15 88H	185/60 R15 84H	185/60 R15 84H
<b>BRAKING SYSTEM</b>					
ABS System Bosch 8.1	Standard	Standard	Standard	Standard	Standard
Electronic Brake Distribution (EBD)	Standard	Standard	Standard	Standard	Standard
ESP with Understeer Control	Option	Option	Option	Option	Not available
Servo: single (S) double (D) - Ø	(") S - 10"	S - 10"	S - 10"	S - 10"	S - 10"
Front: ventilated discs/width	(mm) 260/22	260/22	260/22	260/22	260/22
Rear: drum (T)/discs (DP) Ø - width	(mm) T-203 (standard) DP-240/8 if equipped with ESP	T-203 (standard) DP-240/8 if equipped with ESP	DP-240/8	T-203 (standard) DP-240/8 if equipped with ESP	T-203 (standard)
<b>PERFORMANCE</b>					
Aerodynamics	(S/Cx) 0.705 to 0.735	0.705 to 0.735	0.715 to 0.745	0.720 to 0.745	0.65
Maximum speed	mph (kph) 104 (167)	114 (184)	116 (186)	109 (176)	113 (182)
0- 62 mph (0-100 km/h)	13.4/13.6	11.0/11.2	12.2/12.4	11	11
400 m D.A.	(seconds) 18.7/18.8	17.5/17.6	18.2/18.3	18.1	18.1
1000 m D.A.	(seconds) 35.2/35.4	32.6/32.8	33.4/33.6	33.3	33.3
<b>FUEL CONSUMPTION**</b>					
Urban	mpg (litres/100 km) 37.2 (7.6)	40.4 (7.0)	28.3 (10.0)/26.7 (10.6)	57.7 (4.9)	65.7 (4.3)
Extra urban	mpg (litres/100 km) 57.7 (4.9)	62.7 (4.5)	46.3 (6.1)	80.7 (3.5)	88.3 (3.2)
Combined	mpg (litres/100 km) 48.7 (5.8)	52.3 (5.4)	36.2 (7.8)	70.6 (4.0)	78.5 (3.6)
<b>EMISSIONS</b>					
CO <sub>2</sub> emissions	(g/km) 135	125	179	106	94
CO	269.1	361.2	380	298.1	270.7
HC	49.4	45.3	41.5	Unknown	17.9
NOx	28	24.6	28.6	155.4	171.9
HC + NOx	Unknown	Unknown	Unknown	178.6	189.8
Noise Level dB (A)	73.2	70	70.6	71.4	71.4
Particles	Unknown	Unknown	Unknown	0.09	0.36
<b>FUEL TANK CAPACITY</b>					
Fuel tank capacity	gallons (litres) 12.1 (55)				
<b>WEIGHT</b>					
Kerb weight (excluding driver)	(kg) 1057/1064/1096	1062/1070/1125	1180/1190/1210	1165/1175/1195	1166/1175
Front axle weight	(kg) 643/646/640	648/650/653	751/755/740	766/740/729	767/740
Rear axle weight	(kg) 414/418/456	414/420/472	429/435/470	429/435/466	430/435
Gross vehicle weight	(kg) 1570/1580/1598	1580/1588/1600	1665/1675/1705	1655/1665/1690	1656/1665
Gross train weight	(kg) 2500	2500	2600	2550/2600	2550
Maximum towing weight braked - driver only	(kg) 1200	1200	1200	1200	1200
Maximum towing weight unbraked - driver only	(kg) 535	535	535	535	535

Where two figures are shown divided by a/, first figure = 3 & 5 door, second figure = Sport Tourer  
Where three figures are shown divided by a/, first figure = 3 door, second figure = 5 door, third figure = Sport Tourer

\* Only on 3 door and 5 door Expression

\*\* Official Fuel consumption figures are produced for comparison purpose and are measured according to the European Directive 80/1268/EEC. These figures are specific for a vehicle type and not for a single car. Real world fuel (actual) consumption can vary as the fuel efficiency of a vehicle is influenced by driving behaviour, weather and road conditions.

The use of technical equipment for example air conditioning, can also effect the fuel consumption. For further information, please visit the Vehicle Certification Agency web site www.vca.gov.uk.



Clio **eco2** meets three criteria:

- it is manufactured in an ISO 14001 certified factory, minimising its environmental impact,
- the vehicle produces CO<sub>2</sub> emissions lower than 120g/km,
- and it includes at least 7% recycled plastic in its plastic mass, and has been designed in such a way that 85% of the materials used could have a second life (recyclable for other use or as a source of energy).

With **eco2**, Renault displays its environmental commitment at every stage of the vehicle's life.

# COLOURS

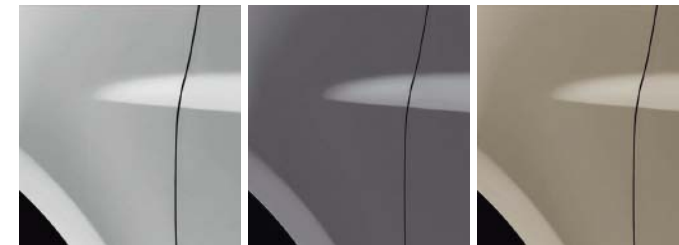


GLACIER WHITE (NM 369)

CAPSICUM RED (NM 727)

MARINE BLUE (NM RPE)

DIAMOND BLACK (MP GNE)



MERCURY (MI D69)

OYSTER GREY (MI KNG)

STONE (MI HNK)

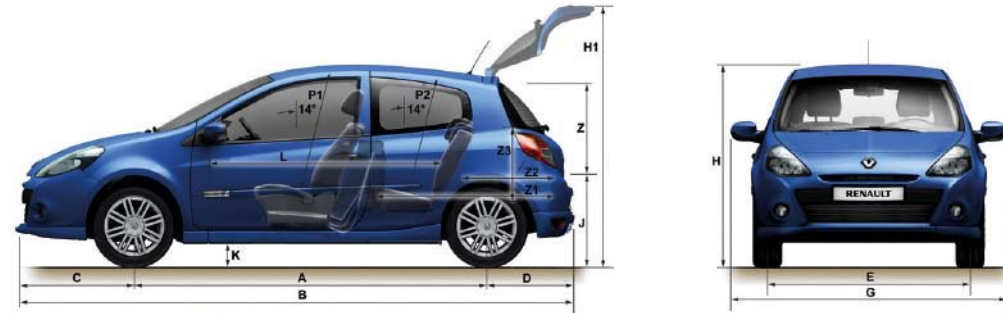
	369 Glacier White (NM)	727 Capsicum Red (NM)	RPE Marine Blue (NM)	GNE Diamond Black (MP)	D69 Mercury (MI)	KNG Oyster Grey (MI)	HNK Stone (MI)
<b>EXPRESSION +</b>	●	●	○	○	○	○	○
<b>DYNAMIQUE TOMTOM</b>	●	●	○	○	○	○	○
<b>GT LINE TOMTOM</b>	●	●	○	○	○	○	○

● = Standard ○ = Optional - = Not available

NM = Non-metallic Supergloss MP = Metallic Pearlescent MI = Metallic Illusion

It should be noted that printing limitations do not permit the subtle paintwork shades on these pages to be shown with absolute accuracy. Only personal inspection of the Clio at your Renault Dealer will reveal it in its true colours. From time to time changes are made to the colour range. Please check availability with your Renault Dealer.

## DIMENSIONS 3 AND 5 DOORS



BOOT VOLUME	3 DOOR		5 DOOR		EXTERIOR DIMENSIONS (MM)		
	3 DOOR	5 DOOR	3 DOOR	5 DOOR	3 DOOR	5 DOOR	
Volume of boot space under parcel shelf with seats up (litres)		288			K	Ground clearance front unladen	108
Maximum boot space with rear seats folded down (litres)		1038			K	Ground clearance rear unladen	74
<b>EXTERIOR DIMENSIONS (MM)</b>							
A	Wheelbase	2575	M	Front elbow width		1677	
B	Overall bodywork length	4032	M1	Rear elbow width	1412	1395	
C	Front overhang	835	N	Front shoulder width		1382	
D	Rear overhang	621	N1	Rear shoulder width	1362	1343	
E	Front track width - tyres 165	1472	P1	Front headroom measured at 14°		907	
E	Front track width - tyres 185	1658	P2	Rear headroom measured at 14°		861	
F	Front track width - tyres 165	1471	Y	Upper boot entry width		848	
F	Front track width - tyres 185	1460	Y1	Lower boot entry width		894	
G	Overall width excluding door mirrors with side rubbing strips - tyres 165/185	1720	Y2	Interior width between wheel arches		1034	
G	Overall width with door mirrors unfolded	2025	Z	Rear entry height		657	
H	Overall unladen height (including roof bars on Sport Tourer)	1497	Z1	Maximum load platform length from behind rear seats		Undisclosed	
H1	Overall unladen height with tailgate open	2003	Z1	Maximum load platform length with rear seats folded down		1300	
J	Unladen sill height	687.5	Z2	Height under rear parcel shelf: from the boot space floor to the top of the parcel shelf		541	

## DIMENSIONS SPORT TOURER



BOOT VOLUME		SPORT TOURER		EXTERIOR DIMENSIONS (MM)		EXTERIOR DIMENSIONS (MM)			
Volume of boot space under parcel shelf with seats up (litres)	439	G	Overall width excluding door mirrors with side rubbing strips - tyres 165/185	1707	N	Front shoulder width	1380		
Maximum boot space with rear seats folded down (litres)	1277	G	Overall width with door mirrors unfolded	2025	N1	Rear shoulder width	1343		
<b>EXTERIOR DIMENSIONS (MM)</b>				H	Overall unladen height (including roof bars on Sport Tourer)	1513	P1	Front headroom measured at 14°	907
A	Wheelbase	2575	H1	Overall unladen height with tailgate open	N/A	P2	Rear headroom measured at 14°	861	
B	Overall bodywork length	4233	J	Unladen sill height	577	Y	Upper boot entry width	848	
C	Front overhang	835	K	Ground clearance front unladen	108	Y1	Lower boot entry width	894	
D	Rear overhang	823	L	Maximum cabin length	1677	Y2	Interior width between wheel arches	1020	
E	Front track width - tyres 165	1472	M	Front elbow width	1402	Z	Rear entry height	770	
E	Front track width - tyres 185	1458	M1	Rear elbow width	1390	Z1	Maximum load platform length from behind rear seats	809	
F	Front track width - tyres 165	1471	Z1	Maximum load platform length with rear seats folded down	1453	Z2	Height under rear parcel shelf: from the boot space floor to the top of the parcel shelf	600	
F	Front track width - tyres 185	1460							

## WHEELS



1

1. 15" 'DEL ARTE' ALLOY WHEELS



2



3

2. 16" 'SOLONIA' ALLOY WHEELS IN GUNMETAL

3. 16" 'CANASTA DIAMOND BLACK' ALLOY WHEELS

	EXPRESSION+	DYNAMIQUE TOMTOM	GT LINE TOMTOM
15" 'Del Arte' alloy wheels	●	-	-
16" 'Solonia' alloy wheels in gunmetal	-	●	-
16" 'Canasta Diamond Black' alloy wheels	-	-	●

# EQUIPMENT AND OPTIONS

	EXPRESSION+	DYNAMIQUE TOMTOM	GT LINE TOMTOM
<b>EXTERIOR FEATURES</b>			
15" 'Del Arte' alloy wheels (not available with Expression ECO <sup>2</sup> 94g)	●	-	-
16" 'Solonia' alloy wheels in gunmetal	-	●	-
16" 'Canasta Diamond Black' alloy wheels	-	-	●
Bumpers - front and rear - body coloured	●	●	●
Front bumper inserts - gloss black	-	●	●
Lower front bumper insert - satin chrome	●	-	-
Lower front bumper insert - gunmetal	-	●	●
Door mirrors - body coloured	●	-	-
Door mirrors - gunmetal	-	●	●
Exterior door handles - body coloured	●	●	●
Metallic paint	○	○	○
Roof bars - satin chrome (Sport Tourer only)	●	●	●
Rear spoiler - body-coloured 'GT Line' (3- and 5- door only)	-	-	●
Side mouldings - body coloured, with satin chrome tip	●	-	-
Side mouldings - body coloured, with gunmetal tip	-	●	●
Windows - tinted	●	●	●
Windows - privacy glass rear and tailgate	○	○	●
<b>INTERIOR FEATURES</b>			
Centre console - black with satin chrome dashboard inserts and air vent surrounds	●	-	-
Centre console - gloss black, with gloss black dashboard inserts and air vent surrounds	-	●	●
Dashboard - soft touch	●	●	●
Gearknob - leather	-	●	●
Steering wheel - leather	-	●	●
Rev counter and speedometer - white figures on black background with red needles	●	●	●
Dial surrounds - satin chrome	●	●	●
Interior door handles - satin chrome	●	●	●
<b>SAFETY</b>			
ABS with EBD (Electronic Brake Distribution) and brake assist	●	●	●
ESC (Electronic Stability Control) with understeer control	○	○	●
Driver and front passenger auto-adaptive airbags	●	●	●
Front lateral airbags	●	●	●
Front lateral curtain airbags	○	●	●
Anti-submarining airbags	●	●	●
Height adjustable three point front seatbelts	●	●	●
New generation height adjustable SRP (System for Restraint and Protection) front headrests	●	●	●
Two height adjustable rear headrests with two pre-set positions	●	-	-
Three height adjustable rear headrests with two pre-set positions	-	●	●
Additional rear brake light	●	●	●
<b>CHILD SAFETY</b>			
ISOFIX points on front passenger seat (3 door only) and outer rear seats	●	●	●
Deactivation of front passenger airbag	●	●	●
<b>SECURITY</b>			
Deadlocking and engine immobiliser	●	●	●
Remote central locking	●	●	●
R.A.I.D. (Renault Anti Intruder Device) automatic door locking	●	●	●
Anti drill door locks and locking fuel cap	●	●	●
<b>DRIVING AND CONTROLS</b>			
Variable assistance electric power steering	●	●	●
Multi-functional trip computer	●	●	●
Cruise control and speed limiter	-	●	●
Exterior temperature display	●	●	●
Rear parking proximity sensors (body coloured)	-	○	●
Puncture repair spray (in lieu of emergency spare wheel)	●	●	●
Emergency spare wheel	○	○	○

	EXPRESSION+	DYNAMIQUE TOMTOM	GT LINE TOMTOM
<b>VISIBILITY AND EXTERIOR LIGHTING</b>			
Door mirrors - electrically heated and adjustable with temperature sensor and driver's blind spot eliminating mirror	●	●	-
Door mirrors - electrically heated, adjustable and folding with temperature sensor and driver's blind spot eliminating mirror	-	-	●
Automatic headlights and automatic front windscreen wipers	-	●	●
Variable speed front windscreen wipers	●	●	●
Standard rear wiper	●	-	-
Smart rear wiper	-	●	●
Double optic headlights with chrome surrounds	●	-	-
Double optic headlights with black surrounds	-	●	●
Internally height adjustable headlights	●	●	●
Front fog lights	●	●	●
Fixed cornering lights with black surrounds	-	○	○
'See Me Home' headlights	●	●	●
<b>HEATING AND VENTILATION</b>			
Manual air conditioning	●	●	-
Automatic climate control	-	○	●
<b>COMFORT AND CONVENIENCE</b>			
Remote central locking key	●	●	●
Height adjustable steering wheel	●	●	●
Front passenger grab handle	●	●	●
Front and rear passenger grab handles (5 door and Sport Tourer only)	-	●	●
Electric front windows	●	-	-
Electric front windows with anti-pinch function and one touch control on the driver's side	-	●	●
Manual rear windows (5 door and Sport Tourer only)	●	●	-
Electric rear windows (5 door and Sport Tourer only)	-	-	●
<b>SEATS AND UPHOLSTERY</b>			
Standard driver and front passenger seat	●	●	●
Upholstery - 'Sport' cloth upholstery in black with 3D design	●	-	-
Upholstery - 'Luxe' upholstery in dark carbon with motif	-	-	●
Height adjustment of driver's seat	●	●	●
60:40 split folding rear seat (single piece base)	●	●	●
60:40 split folding rear seat (and folding base)	● (Sport Tourer only)	● (Sport Tourer only)	● (Sport Tourer only)
<b>STORAGE</b>			
Storage pocket behind driver's seat	-	●	●
Boot luggage net (Sport Tourer only)	○	○	○
<b>COMMUNICATION AND CONNECTIVITY</b>			
4 x 20W radio CD MP3 reader with fingertip remote control 4 speakers including 2 dual cone (including RCA socket in front of the gear lever)	●	●	●
Multi-functional TunePoint (USB connection for MP3 players)	-	○	●
Integrated Bluetooth hands-free system	●	●	●
Carminat TomTom Live Navigation system (large 5.8-inch [14.7 cm] colour screen integrated in the dashboard with 1 remote control and 1 SD card including United Kingdom and Republic of Ireland map coverage)	♂	●	●
Carminat TomTom® Western Europe map upgrade (requires Carminat TomTom to be fitted)	♂	○	○
<b>ECO<sup>2</sup> 94G VERSION</b>			
EXPRESSION+ ECO <sup>2</sup> 94g (3- and 5- DOOR ONLY)	♂**	-	-

● = Standard ○ = Optional - = Not available

A = Accessory

\* Only available on Expression+ ECO<sup>2</sup> 94g

\*\* Please see price guide for further details

# RENAULT CLIO



(Enter Renault's world at Sky Guide 883 and [www.renault.tv](http://www.renault.tv))

**4** FOUR YEARS  
WARRANTY  
ROADSIDE COVER  
INCLUDED  
SERVICING  
FINANCE PACKAGE

RENAULT  
recommends **elf**

Although every effort has been made to ensure that the information contained within this brochure is as accurate and up to date as possible, Renault U.K. reserves the right to modify its models without notice, including their characteristics, specifications, equipment and accessories. Brochures inevitably become out of date or inaccurate in some respects, in that such characteristics, specifications, equipment, or accessories may be changed after the publication date given below and can differ from the descriptions given. It is therefore necessary to check with your Renault Dealer before purchasing any product that the characteristics, specifications, equipment or accessories of the vehicle on order are as advertised. Publication date November 2012.

