

RENAULT WIND ROADSTER



DRIVE THE CHANGE



WHO BETTER THAN RENAULT TO SERVICE YOUR RENAULT?

Your new Renault Wind Roadster is covered by a 3-year warranty package – the first 2 years of unlimited mileage Renault manufacturer warranty, followed by a further year of cover up to 60,000 miles. Paintwork is also guaranteed for 3 years while the anti-corrosion warranty runs for 12 years. In addition, the Renault Assistance plan ensures prompt help in the UK and Northern Ireland for manufacturer defects for 36 months. For full details please refer to the Renault warranty terms and conditions, available from your Renault Dealer or from www.renault.co.uk.

FINANCE OPTIONS

There are a wide variety of ways in which the purchase of a new car can be financed. Renault Finance offers all of them, so whether you're a fleet buyer or a private buyer, Renault Finance is ideally placed to tell you which plan or combination of plans best suits your needs and circumstances.

SERVICE INTERVALS

All models 18,000 miles / 2 years Except:

13,000 miles / 2 years: <ul style="list-style-type: none">Clio, Modus, Grand Modus dCi 86 engines*	18,000 miles / 1 year: <ul style="list-style-type: none">Espace all enginesNew Kangoo 1.6 16V 105 engine
12,600 miles / 2 years: <ul style="list-style-type: none">New Kangoo dCi 68 and 86 engines**	12,500 miles / 1 year: <ul style="list-style-type: none">Laguna 2.0 205 Turbo, 3.5 V6 240 Auto and dCi 180 FAP
12,500 miles / 2 years: <ul style="list-style-type: none">New Mégane, New Scénic, New Grand Scénic dCi 86 enginesTwingo 1.2 TCe 100 engineTwingo Renaultsport and New Mégane Coupé Renaultsport engines	12,000 miles / 1 year: <ul style="list-style-type: none">Koleos all enginesNew Kangoo 1.6 8V engine
12,000 miles / 2 years: <ul style="list-style-type: none">Clio, Modus, Grand Modus 1.2 TCe 100 enginesClio Renaultsport engines	
<small>Service required at the mileage or time interval shown, whichever is sooner.</small>	

ENGINES WITH OIL CONTROL SYSTEM (OCS)

- 1.2 TCe 100 / 1.4 TCe 130 / 2.0 TCe 180
- 1.6 WT 128 / Renaultsport 133 and 250
- All diesel engines (except Koleos)

OCS monitors driving conditions that directly affect the quality of your engine oil, protecting your engine from excessive wear and possible bearing failure. Under certain conditions; low speeds, traffic jams, door-to-door deliveries (engine turning with little distance travelled) or in high gear for long periods e.g. sport driving, towing a caravan/trailer over 500kg (engine turning at higher revolutions) the vehicle's service interval may be shortened and you will be alerted, via the instrument panel service indicator, that a Renault Service is required earlier (refer to driver's handbook for details).

EXTENDING YOUR WARRANTIES AND COVER

Renault Extended Warranty allows you to extend your Renault Warranty up to 5 years or 80,000 miles. Renault Assistance Added Cover provides you with additional cover for incidents not covered by Renault Assistance; punctures, incorrect (or lack of) fuel, keys lost, stolen or locked inside the vehicle and incidents involving caravans or trailers. For full information on these products please ask your Renault Dealer or log on to www.renault.co.uk and click on 'Owner Services', where you can also buy securely online.

SERVICE PLANS

Renault Service Plans are available on new and used vehicles* and allow you to budget for your vehicle's servicing with convenient payment options and inflation proof pricing. For more information please ask your Renault Dealer or log on to www.renault.co.uk and click on 'Owner Services'.

* participating dealers only

RENAULT ACCIDENT SUPPORT LINE - 0800 085 8005

The Renault Accident Support Line (RASL) is a dedicated service from Renault for all Renault drivers and their families, no matter what car they drive. This service is available at no cost to you, regardless of fault. RASL will deal with every aspect of your claim, from ensuring you are recovered to a Renault Approved Accident Repair Centre to dealing with all insurance companies giving you total convenience and peace of mind. **0800 085 8005** is the only number you need so please programme it into your phone and make sure that in the event of an accident you call us first and we will take care of everything.

RASL will:

- Arrange recovery of your vehicle from the scene of the accident to a Renault Approved Accident Repair Centre
- Organise the repairs at a Renault Approved Accident Repair Centre using only Renault Original Parts
- Deal with all insurance companies, both yours and the other parties'
- Provide a like for like replacement vehicle if the accident is not your fault
- Pursue the at fault party for all associated costs if the accident is not your fault
- Use the same paint as during manufacture
- Provide a 5 year repair guarantee on paint and repairs
- Ensure you do not have to pay a policy excess if the accident is not your fault
- Provide the same service for your family free of charge regardless if their car is a Renault or not
- Ensure that yours and your passengers' safety are guaranteed and your five star NCAP rating will not be compromised

RENAULT NETWORK SERVICES

No-one is better placed than Renault to maintain, fit and repair your Renault, fast. The Renault Minute (maintenance and repair with no appointment necessary) and Renault Rapide Bodycare (bumper scuffs, dings and dents, windscreen, stone chips and interior repairs...) services deliver the highest level of repair and maintenance and offer a full year's guarantee on Original Renault Parts. And don't forget to have a look at our wide range of additional equipment and accessories!

RENAULT INSURANCE

A car as well designed as your Renault deserves an insurance policy to match. Renault Insurance has been specifically created to provide superb protection for you and your car.*** In addition to a very competitive premium, Renault Insurance also includes: a free 24-hour accident recovery programme; Renault Genuine parts fitted in Renault Accident Repair Centres, protecting your 12 year anticorrosion warranty; repairs guaranteed for 3 years; a courtesy car for the duration of any repairs - subject to availability when you use an approved repairer; payment by instalments - subject to status.

Lines open 8am – 8pm weekdays, 9am – 2pm Saturdays. Calls may be recorded. Terms and Conditions apply. All quotes are based on individual circumstance and subject to insurers underwriting criteria. Renault insurance is arranged and administered by Equity Insurance Brokers Limited, which is authorised and regulated by the Financial Services Authority. Registered Office: Library House, New Road, Brentwood, Essex, CM14 4GD. Registered in England No. 258414

* Up to build date 23 April 2010, service intervals are 12,000 miles / 2 years

** Up to build date 30 May 2010, service intervals are 12,000 miles / 2 years

*** Note: this does not apply to vans or Renaultsport cars

CUSTOMER SERVICES

Renault knows the value of communicating with its customers and we have established effective ways to keep in touch with you. If after speaking to your local Renault dealership you are not completely satisfied, please contact the Renault UK Customer Service Department on **0800 072 3372** (Mon-Fri 8.30am to 5.30pm). You can also visit our website www.renault.co.uk Or write to us at: **Renault UK Ltd, The Rivers Office Park, Denham Way, Maple Cross, Rickmansworth, Hertfordshire, WD3 9YS.**

Find out more about your vehicle at www.e-guide.renault.com



WHY RENAULT? WE'RE DRIVEN BY A PASSION TO MEET AND EXCEED PEOPLE'S NEEDS, AND THAT'S WHAT DRIVES THE INDUSTRY FORWARD. IT'S BEEN THAT WAY WITH US FOR OVER A HUNDRED YEARS. BUT IN TODAY'S RAPIDLY-CHANGING ENVIRONMENT, IT'S MORE IMPORTANT THAN EVER THAT WE SOURCE NEW SOLUTIONS THAT WILL SAFEGUARD ALL OUR FUTURES.

We know that the car is at a turning point, it has to evolve whether you believe in global warming or not; to emit less in cities, to make less noise and to use increasingly scarce energy more efficiently.

At Renault we are working to create more affordable cars, with radically lower CO₂ emissions. For the widest possible audience. Today that's our collection of 35 'eco²' models. eco² indicates that the vehicle produces CO₂ emissions lower than 140 g/km, it includes at least 5% recycled plastic in its plastic mass, and has been designed in such a way that 95% of the materials used could have a second life (recyclable for other use or as a source of energy). In addition eco² means that our factories are ISO 14001 certified.

Starting next year there will be a groundbreaking range of electric vehicles, from a nippy town car to a comfortable family saloon and a small van. They will be affordable to run – you will be able to drive up to 100 miles using a battery that costs typically £3 to charge, and a lot less using cheaper tariffs. And parking and congestion charges should all be lower, too.

We believe it's time to make the car a driver of progress once more. We are determined to drive that change. Soon you will be able to join us.

RENAULT. DRIVE THE CHANGE.



**RENAULT WIND ROADSTER OPEN YOUR EYES
TO AN ORIGINAL, SPORTY, STUNNING DESIGN.
DROP THE ROOF IN 12 SECONDS FLAT.
SAVOUR THE PLEASURE OF BEING AT ONE
WITH YOURSELF, AND AT ONE WITH THE OPEN AIR.**



OPEN & PLAY





Breaking news! Renault Wind Roadster rewrites the rules for coupé-roadsters. In town, its chic design and compact size are astounding. Roof up or down, it's guaranteed showtime: check out the rear boomerang-shaped headlights, sporty and elegant lines and beautiful 17" alloy wheels*. Out on the road, prepare for an exhilarating drive. The Wind Roadster's engine and chassis is based on a platform that has been engineered by Renaultsport Technologies to give you outstanding steering precision and thrilling responses. And the performance orientated 1.6 VT 133 engine is borrowed from Twingo Renaultsport (ESP with disconnection function). The thrum of its sports-sounding engine acoustic, low driving position, rigid chassis and superb balance are the spicy ingredients that conjure up a dynamic and precise drive. Where will your playground be? In the city or out on the open road? But hang on... who said you had to choose?

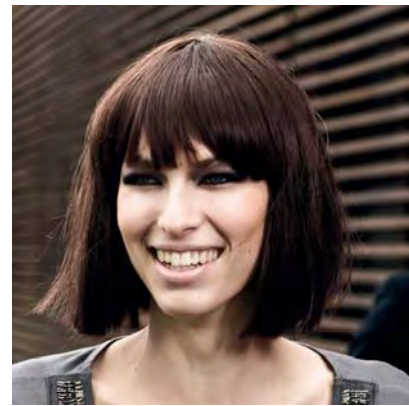
* Depending on model.



DRIVE
IN THE OPEN AIR

SMILE

IN THE CITY





**12
SECONDS**



Freedom! We kick-started it with a very smart, original idea: a pivoting, electric hard-top roof. Result? It opens in just 12 seconds to transform the coupé into a roadster. And vice versa. Simple, practical, and super-quick? Certainly. But here's the twist. Incredibly, the boot still keeps its same storage space of 270 litres even when the roof is stowed. Nothing else even comes close.

FROM COUPÉ TO ROADSTER



COLLECTION LIMITED EDITION

Open, play and discover a smart and very exclusive limited edition, available for only 200 drivers in the UK!
The luxury of leather, the stylish look - inside and out - and the freedom of an open roof.





BE ONE OF THE FEW...

The roof opens in just 12 seconds, revealing a smart and sporting interior, with carbon leather heated seats adding a luxurious finish. Elegant touches of red contrast with the deep black interior trim. The top of the instrument panel, door straps and carpet mats are all finished in bright red. The magic continues outside: the 17" alloy wheels, door mirrors and front air intakes are all finished in glossy chrome, and a gloss black roof completes the look. To add to the special nature of this stylish car, numbers will be limited to 200 for the UK market.



DISCOVER

AND GO!

STORAGE AND CONNECTIVITY



1. MULTI-FUNCTIONAL TUNEPPOINT

Connect your music player using the USB and audio sockets, then control the system from the steering wheel.

2. BLUETOOTH® CD MP3 CAR STEREO*

Use to play MP3 files, and to connect a hands-free kit so you can be reachable any time, anywhere.

*We recommend you pull over and stop in a safe area before using the phone.



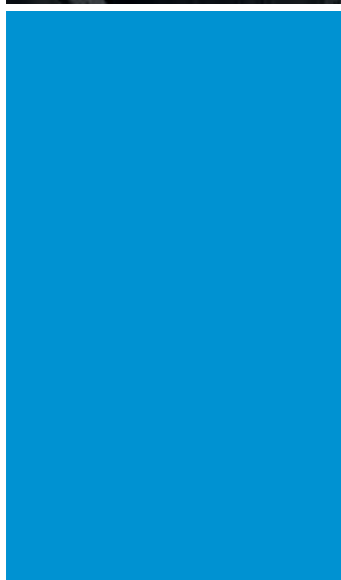
3. REAR STORAGE

Located behind the seats and perfectly accessible from the front seats, it gives you 12 litres of storage for everyday practicality.



4. BOOT

The Wind Roadster's large boot offers a large load volume and very good accessibility. No matter whether the roof's up or down, its 270 litres of storage space will hold all your luggage with ease.



ACCESSORIES

MAKE YOUR WIND ROADSTER STAND OUT FROM THE CROWD WITH A RANGE OF ACCESSORIES.

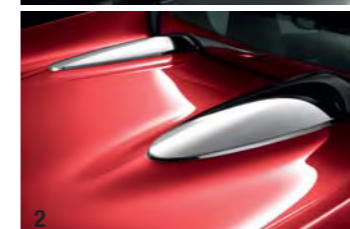


SPORT AND DESIGN

Make your Renault undeniably yours.

1. CHROMED MIRROR COVERS

Give the outside of your car a sporty touch with these chrome effect wing mirror covers.



2. CHROME DOUBLE COWLS

Enhance the natural design of the car by adding the chrome double cowls, which add to the stunning appearance of the Wind Roadster.



3. REAR DIFFUSER

The aluminium effect rear diffuser and rear exhaust combine to give your Wind Roadster a sporty edge, which further highlights its dynamic appearance.

NB This accessory prevents access to the rear towing eye.



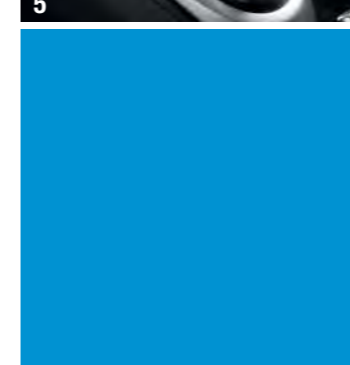
4. FOG LIGHT SURROUNDS

Reinforce the dynamic looks of your Wind Roadster with these aluminium effect fog light surrounds.



5. RENAULTSPORT GEAR LEVER

Chrome gear knob with orange Renaultsport branding.



PROTECTION AND COMFORT

Keep you and your Renault safe and sound.

6. G-3 PAINT PROTECTION

Ixtar G-3 Glasscoat is both an exterior and interior Protection product designed to protect paintwork and avoid the need for waxing. It uses the latest technology and comes with a 5-year transferable guarantee. Protect your investment with Ixtar G-3 Glasscoat.

7. SAFETY KIT

Our safety kit, which contains a warning triangle, high visibility vest and first aid kit, is a legal requirement when travelling in some European countries and is essential for your safety.

8. EXPRESSION TEXTILE MATS

Mats are an essential accessory to protect your car from everyday dirt and debris. Designed to fit perfectly into your Renault, the inbuilt stud fixings ensure they fit safely with no slipping.

9. REAR PARKING SENSORS

This clever system detects objects behind your vehicle as well as making parking in the smallest spaces so much easier. Ultrasonic sensors in the bumper emit a beep and as objects get closer, the sound becomes louder and more frequent.

10. ALARM

Protect your Wind Roadster and your possessions with our anti-theft alarm.

ixtar
G-3 GLASSCOAT®

6



10

TRIMS



DYNAMIQUE

A dark grey interior with sports style seats with extra lateral support and a modern, dynamic dashboard design. Chrome instrument surrounds, black translucent instrument visor, leather steering wheel and leather gear lever... The Wind Roadster adopts a neat and indisputably sporty style.



'COLLECTION' LIMITED EDITION

The exclusive limited edition 'COLLECTION' offers luxury features such as leather heated seats and a gloss black roof. It also comes with elegant touches of red (top instrument panel, door straps). Only 200 will be available for the UK market.



DYNAMIQUE S

With a stylish trim and muted interior colours, the Dynamique S offers a series of standard high-tech equipment: multi-functional TunePoint, Bluetooth® radio and automatic lights and wipers. Enjoy the ultimate in driving well-being with leather heated seats (in carbon or camel), available as an option. The choice is yours.

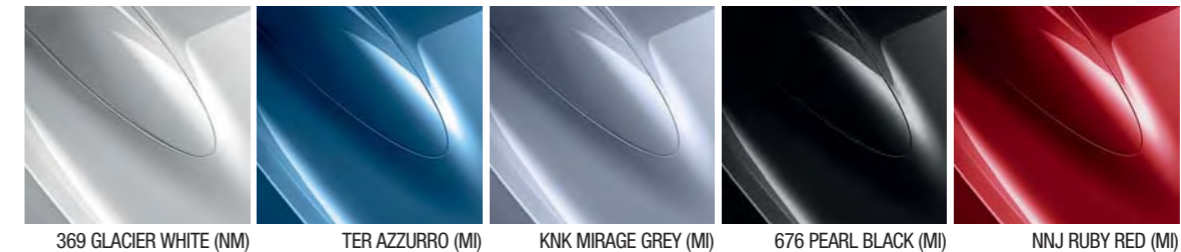
EQUIPMENT

<p>Available on all versions</p> <ul style="list-style-type: none"> • Headrests - integrated • Steering wheel - power assisted variable • Steering wheel - height adjustable • Tinted windows 	<ul style="list-style-type: none"> • Retractable (in 12 seconds) hard roof • Trip computer • ABS with EBD (Electronic Brake Distribution) • Airbags - front driver and passenger • Airbags - lateral driver and passenger • Airbag - front passenger airbag deactivation 	<ul style="list-style-type: none"> • Electronic immobiliser • ESP • Brake assist • Remote central locking with deadlocking 	CORE FEATURES
<p>DYNAMIQUE Additional standard equipment to core features above</p> <ul style="list-style-type: none"> • 16" alloy wheels • Air conditioning 	<ul style="list-style-type: none"> • Door mirrors – electrically adjustable and heated - gloss black • Cruise control and speed limiter • Front fog lights • Sports style front seats with extra lateral support 	<ul style="list-style-type: none"> • 2 x 20W radio single CD MP3 reader with AUX input and fingertip remote control 	DYNAMIQUE
<p>DYNAMIQUE S Additional standard equipment to Dynamique (includes core features above)</p> <ul style="list-style-type: none"> • 17" alloy wheels • Alarm - Thatcham category 1 	<ul style="list-style-type: none"> • Auto headlights and wipers • Climate control • Headlights - 'See me home' • 4 x 35W radio single CD MP3 reader and fingertip remote control 	<ul style="list-style-type: none"> • Bluetooth connectivity • Multi-functional TunePoint (USB connection) 	DYNAMIQUE S
<p>'COLLECTION' LIMITED EDITION Additional standard equipment to Dynamique S - Limited to 200 units (includes core features above)</p> <ul style="list-style-type: none"> • Upholstery - carbon - leather faced • Seats - heated 	<ul style="list-style-type: none"> • Gloss black retractable roof • Red and chrome inserts - dashboard • Leather sport wheel and gear knob • Aluminium pedals • Collection exterior badging - lateral and boot • Door mirrors - electrically adjustable and heated - chrome effect 	<ul style="list-style-type: none"> • Double cowls (roof cover) - chrome • Carpet mats (black) with red piping • Unique identification plaque (numbered 1-200) • Red door pulls 	'COLLECTION' LIMITED EDITION

TECHNICAL SPECIFICATIONS

ENGINE	1.2 TCe 100	1.6 VVT 133
Euro4 / Euro5 status	Euro5	Euro4
ENGINE		
Engine type	D4F 782	K4M 854
Cubic capacity (cm ³)	1149	1598
Bore x stroke (mm)	69 X 76.8	79.5 x 80.5
No. of cylinders / valves	4 / 16	4 / 16
Compression ratio	9.5 : 1	11 : 1
Maximum power kW CEE (PS DIN) @ rpm	74 (100) @ 5500	98 (133) @ 6750
Max torque Nm CEE (m.kg DIN) at rpm (tr/min)	152 (15.5) @ 3500	160 (16.3) @ 4400
Fuel injection system	multipoint	multipoint
Fuel	Petrol	Petrol
Catalytic converter	Standard	Standard
GEARBOX		
Type	JH3 309	JR5 176
Transmission	Manual	Manual
Number of speeds	5	5
Gear ratios mph/1000 rpm (kph/1000 rpm) in 1 st	4.59 (7.39)	4.92 (7.91)
in 2 nd	8.36 (13.45)	8.15 (13.12)
in 3 rd	12.28 (19.77)	11.50 (18.5)
in 4 th	16.63 (26.76)	14.75 (23.74)
in 5 th	20.86 (33.57)	18.51 (29.79)
STEERING		
Power steering	Standard	Standard
Variable assisted	Standard	Standard
Ø turning circle between kerbs / walls (m)		10.55 / 10.95
Number of steering wheel turns (1/2 position)		1.35
SUSPENSION		
Front		Pseudo Mac-Pherson, inferior arm in aluminium
Rear		H type
Ø anti roll bar front / rear (mm)		22/24
WHEELS		
Wheels (")		7 J 16" - 7 J 17"
Standard wheels		195/45 R16
Optional wheels		205/40 R17
BRAKES		
Circuit type		X
ABS with EBD (Electronic Brake Distribution)	Standard	Standard
Brake servo diameter Ø (")		S - 9"
F : ventilated discs Ø, thickness (mm)		DV - 280 x 24 - 57
R : drums Ø, thickness (mm)		DP - 240 x 8 - 34
PERFORMANCES		
Drag coefficient (Sx)		0,688
Max speed (mph)	118	125
0 - 62 mph (seconds)	10"5	9"2
400 m D.A. (seconds)	17"2	16"7
1000 m D.A. (seconds)	32"	30"4
FUEL CONSUMPTION		
CO ₂ emissions (g/km)	145	165
Urban cycle mpg (l/100 km)	35.3 (8.0)	31.0 (8.1)
Extra urban cycle	53.3 (5.3)	49.5 (5.7)
Combined cycle	44.8 (6.3)	40.3 (7.0)
CAPACITY		
Fuel tank capacity (litres)		40
Rear boot capacity (litres)		270
WEIGHTS		
Kerb weight (excluding driver) lb (kg)	2493.4 (1131)	2586 (1173)
Front axle weight lb (kg)	1567 (711)	1656 (751)
Rear axle weight lb (kg)	926 (420)	930 (422)
Gross vehicle weight lb (kg)	2963 (1344)	3049 (1383)

COLOURS



	Glacier White (369)	Azzurro (TER)	Mirage Grey (KVK)	Pearl Black (676)	Ruby Red (NNJ)
DYNAMIQUE	●	○	○	○	○
DYNAMIQUE S	●	○	○	○	○
COLLECTION LIMITED EDITION	●	-	-	○	-

NM = Non-metallic Supergloss

MI = Metallic Illusion

WHEELS

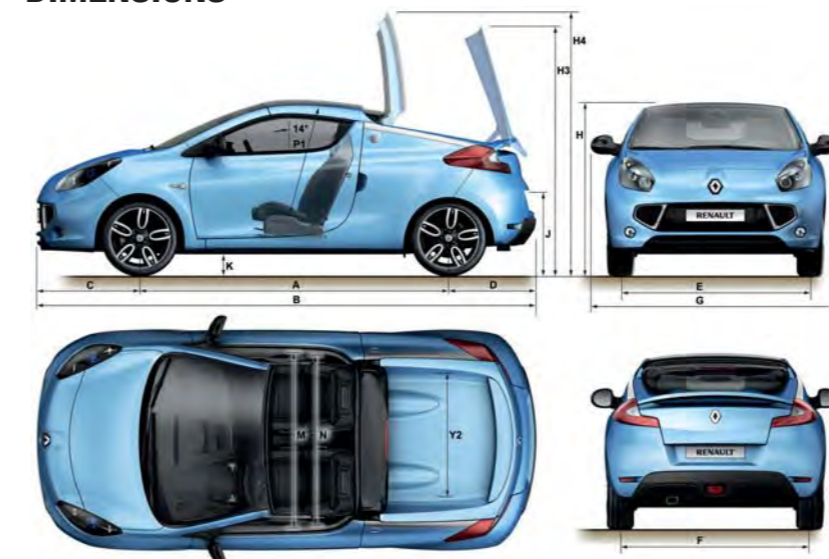


16" ALLOY WHEELS

17" ALLOY WHEELS

(STANDARD ON DYNAMIQUE) (STANDARD ON DYNAMIQUE S AND COLLECTION LIMITED EDITION)

DIMENSIONS



WIND ROADSTER DIMENSIONS	2 DOORS
Boot volume (litres) VDA / ball bearings	270/360
DIMENSIONS (mm)	
A Wheelbase	2 368
B Overall length	3 833
C Front overhang	797
D Rear overhang	668
E Front track	1 451
F Rear track	1 430
G Overall width / with door mirrors	1 689 / 1 913
H Overall height	1 381
H3 Height with roof open	1 945
H4 Height with roof open in maximum high position	2 052
J Height threshold of boot	755
K Ground clearance	120
M Front elbow width	1 400
N Front shoulder width	1 320
P1 Headroom at 14°	868
Y2 Interior width between wheel arches	960

EQUIPMENT AND OPTIONS

	DYNAMIQUE	DYNAMIQUE S	COLLECTION LIMITED EDITION
Exterior Equipment			
Metallic paint	○	○	○
Door mirrors - gloss black, electrically adjustable, heated with driver's blind spot eliminating mirror	●	●	-
Door mirrors - chrome effect, electrically adjustable, heated with driver's blind spot eliminating mirror	-	-	●
Front fog lights	●	●	●
Body coloured exterior door handles	●	●	●
Body coloured rear bumper	●	●	●
Body coloured front bumper	●	●	●
Rear parking sensors	Accessory	Accessory	Accessory
Single exhaust	●	●	●
Rear: Wind badging (boot)	●	●	-
Side : Wind badging (on buttress)	●	●	-
Rear: Wind badging with Collection decals (boot)	-	-	●
Side : Wind Collection badging with Collection decals (on buttress)	-	-	●
Rear spoiler	●	●	●
Roof: gloss black	-	-	●
16" alloy wheels (with locking wheel nuts)	●	-	-
17" alloy wheels (with locking wheel nuts)	-	●	●
Front grille with chrome air intake surrounds	●	●	●
Double chrome cowls (roof cover)	-	-	●
Safety and Security			
ABS with EBD (Electronic Brake Distribution)	●	●	●
ESP (Electronic Stability Programme)	●	●	●
ESP with disconnection function (only on 1.6 VVT 133)	● (only on 1.6 VVT 133)	● (only on 1.6 VVT 133)	● (only on 1.6 VVT 133)
Brake assist	●	●	●
Driver and passenger front airbag	●	●	●
Front driver and passenger lateral airbag	●	●	●
Passenger airbag manual deactivation	●	●	●
Fixed roll over protection	●	●	●
Driver and passenger seatbelts with 3-point pretensioners	●	●	●
Anti submarining system (under the seat)	●	●	●
Alarm (Thatcham Category 1)	Accessory	●	●
Electronic immobiliser	●	●	●
Deadlocking	●	●	●
Tyre inflation kit	●	●	●
Emergency spare wheel (185x55xR15) - No cost option	○	○	○
Comfort and Convenience			
Cruise control and speed limiter	●	●	●
Remote central locking	●	●	●
Electric windows - one touch open function	●	●	●
Electric power steering	●	●	●
Leather steering wheel - reach and rake adjustable	●	●	●
Seats			
Sports style seats with extra lateral support	●	●	●
Height adjustable and sliding seats	●	●	●
Leather and heated seats - dark carbon (with black door pulls)	○	○	●
Leather and heated seats - camel (with black door pulls)	-	○	-
Heated seats	○	○	●
Headrests - integrated	●	●	●

EQUIPMENT AND OPTIONS continued

	DYNAMIQUE	DYNAMIQUE S	COLLECTION LIMITED EDITION
Roof Opening			
Roof: retractable hard top (closes in 12 seconds)*	●	●	●
Roof opening : manual locking/unlocking, electric opening/closing*	●	●	●
Heating and Ventilation			
Pollen filter	●	●	●
Manual air conditioning	●	-	-
Automatic climate control (including automatic lights and windscreen wipers and 'See me home' headlights)	○	●	●
Connectivity and Communication			
2 x 20W single CD / MP3 reader with AUX input and fingertip remote control.	●	●	●
2 x 35W single CD / MP3 reader with AUX input, Bluetooth connectivity and fingertip remote control.	○	●	●
Multi-functional TunePoint (USB connection) - only available with 2 x 35W radio	○	●	●
Visibility and Lighting			
Front headlights with black surround and blue bezels	-	-	●
Rear "boomerang" shaped headlights	●	●	●
Directional indicators integrated in the headlights	●	●	●
Lateral indicators - side	●	●	●
Front fog lights	●	●	●
Heated rear window	●	●	●
Rear brake light (in window)	●	●	●
'See me home' headlights - only available with climate control	○	●	●
Automatic lights and windscreen wipers - only available with climate control	○	●	●
Tinted front windscreen and lateral windows	●	●	●
Interior Features and Instruments			
Manual locking/unlocking handle (header rail)	●	●	●
12V socket in the glove box	●	●	●
Brushed aluminium interior door handles	●	●	●
Black door pulls (only available with leather and heated seats)	○	○	-
Red door pulls	-	-	●
Carpet mats (black) with red piping around edges	-	-	●
Driver and passenger sunvisors	●	●	●
Aluminium foot pedals	●	●	●
Speedometer (analogic)	●	●	●
Rev counter	●	●	●
Exterior temperature display	●	●	●
Day/ night adjustable illumination	●	●	●
Trip computer	●	●	●
Unique identification plaque (numbered 1-200)	-	-	●
'Collection' side door sill design	-	-	●
Black instrument cowl (dashboard)	●	●	-
Red instrument cowl (dashboard)	-	-	●
Chrome dial surrounds	●	●	●

*For safety reasons, the roof can only be opened or closed when the vehicle is stationary and the handbrake on

RENAULT WIND ROADSTER



(Enter Renault's world at Sky Guide 883 and www.renault.tv)

Although every effort has been made to ensure that the information contained within this brochure is as accurate and up to date as possible, Renault U.K. reserves the right to modify its models without notice, including their characteristics, specifications, equipment and accessories. Brochures inevitably become out of date or inaccurate in some respects, in that such characteristics, specifications, equipment, or accessories may be changed after the publication date given below and can differ from the descriptions given. It is therefore necessary to check with your Renault Dealer before purchasing any product that the characteristics, specifications, equipment or accessories of the vehicle on order are as advertised. Publication date July 2010.