

# KOLEOS



**KOLEOS IS MULTI-TALENTED.**  
**CAR-LIKE COMFORT.**  
**THE SPACIOUSNESS OF AN MPV.**  
**THE TECHNOLOGY AND SECURITY OF A 4x4.**  
**KOLEOS 4x4 CROSSOVER:**  
**DISCOVER THE GREAT INDOORS.**





With Koleos, Renault launches a new vision of the Crossover. Combining the 4x4 technology developed by Nissan and the highest comfort and safety standards, Koleos is the first all-terrain vehicle designed by Renault. It shows Renault's passion for offering vehicles with different personalities, united by the same clear focus: to lead the market in driving and onboard experience, versatility and security. And to guarantee its state-of-the-art design, manufacturing and service quality, Renault gives Koleos owners a 3-year or 100,000 mile warranty\*. Serious commitments, for a unique vehicle.

\* Whichever comes first





**TOTALLY ADAPTABLE**

FOR ALL YOUR NEEDS.



# AN AUTHENTIC 4X4

YOU HAVE THE IMAGINATION. KOLEOS HAS THE ABILITY.

Koleos has real 4x4, all-terrain capability. Its high ground clearance, generous approach and departure angles and the intelligent electronic control of its transmission system adapt confidently to the most difficult surfaces such as snow, ice or mud. Combined with the ESP (Electronic Stability Programme), the ALL MODE 4x4-i system guarantees best possible traction and roadholding at all times, through automatic, precise distribution of the torque between all four wheels. And in the most extreme conditions, you can always keep control by selecting the '4WD LOCK' position. This distributes power equally between the front and rear axles for maximum roadholding and reassurance.



# NATURALLY EVOLVED

YOU'RE RIGHT TO BELIEVE IN INNOVATION. KOLEOS WILL PROVE IT.





For Koleos, steep slopes are never a problem. The Hill Start Assist system activates automatically at an incline greater than 10% to stop any backward movement, and allows you to move off without even using the handbrake. Equally, the Hill Descent Control leaves you free to concentrate fully on manoeuvring and steering on steep or slippery slopes. And to help you find your way easily, wherever you're going, you can rely on the satellite navigation system.

# UNCOMPROMISINGLY DYNAMIC

YOU HAVE A THIRST FOR THRILLS. KOLEOS DELIVERS EVERY TIME.

With Koleos, escape is never far away. On country or city roads, its accurate steering, good stability and dynamic qualities are designed for your safety and driving pleasure. Experience the enjoyment of driving a safe, high-performance vehicle, powered by engines from 150 to 175 hp.





# RENAULT KOLEOS

FIRST CLASS TRAVELLING COMFORT.



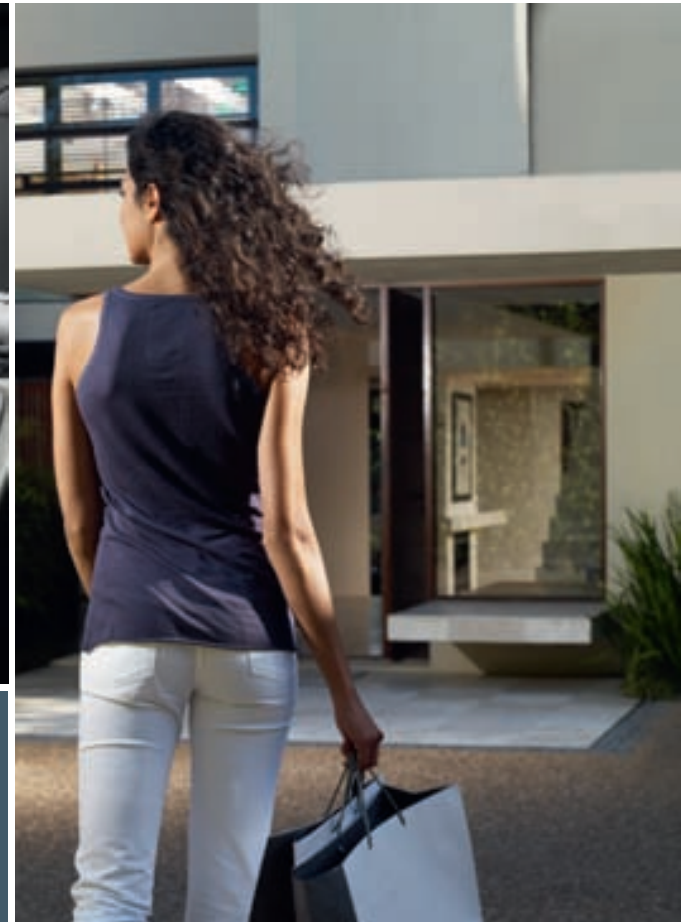




# CLEARLY INTUITIVE

YOU LIKE EVERYTHING TO BE SIMPLE. SO KOLEOS MAKES EVERYTHING EASY.

You'll quickly find yourself at home behind the wheel of the Koleos. Easy to manoeuvre and highly ergonomic, it gives you the peace of mind of real control. Around town, Koleos is perfect for all your daily needs. Its elevated driving position gives you exceptional vision while its well-designed dashboard groups all the useful functions within easy reach. Naturally, on board you'll find all the kinds of innovations that have made Renault a world leader for comfort and safety: Renault hands free card, automatic parking brake, cruise control / speed limiter, automatic headlight and windscreen wiper activation... this is undoubtedly top-of-the-range, user-friendly technology.



# AMAZINGLY COMFORTABLE

YOU DEMAND COMFORT. WITH KOLEOS, IT'S A GIVEN.

On board Koleos everything is designed for your well-being. The interior boasts particularly generous headroom in the front. With a seriously large glazed surface area and a panoramic sunroof, the passenger compartment is extremely light and airy, and for the first time in the Renault range, a Bose® sound system has been created especially for Koleos, to offer all passengers first-rate acoustic quality. The sound system can be connected to your MP3 player. Koleos also offers a hands free telephone kit with Bluetooth® connectivity. And thanks to the automatic dual-zone climate control with ventilation control in the back, you can have individual, personalised comfort.\*

\*Equipment available on Dynamique S or Privilège – see equipment pages for more information.







# INCREDIBLY FLEXIBLE

YOU HAVE THE IMAGINATION. KOLEOS HAS THE ANSWERS.



The vast interior space of the Koleos offers a wide range of useful, intelligent storage solutions. Its wide, deep boot has a volume of 450 litres. For even more loading space (up to 1380 litres), the Super-Fold provides levers at the back of the boot to make it easy to fold down the back seat. To accommodate long objects, the front passenger seat folds down, and can also become a table. The split tailgate's low sill gives easy access to the boot, and when dropped, the lower part becomes a handy platform or seat, able to bear weights up to 200 kg. Finally, to store small objects, the front and rear passengers have access to a variety of storage compartments. And there's yet another useful space under the boot floor.

# TECHNOLOGY



## 1. 4x4 TRANSMISSION

Three positions to choose from:

- **AUTO** (default position):

The All Mode 4x4-i system gives optimum grip for the conditions, by continuously sensing and distributing torque between the four wheels. So, the wheels with the best grip get more torque for best possible drivability. In normal conditions, the torque will only be transmitted to the rear wheels as and when required, to keep fuel consumption as close as possible to 2WD mode.

- **LOCK**: In the trickiest situations, and below 25 mph, the LOCK position locks the torque distribution at 50% for the front wheels and 50% for the rear wheels, so Koleos delivers its full 4x4 capabilities.

- **2WD**: The two-wheel drive position can be selected on dry roads or on the motorway.



## 2. HILL DESCENT CONTROL

This system allows you to descend the steepest slopes safely by stabilising speed at 4 mph, without you needing to use the brakes.

The system is activated at the touch of a button when the LOCK position is engaged.



## 3. HILL START ASSIST

The Hill Start Assist is automatically activated as soon as an incline of at least 10% is detected.

The system prevents any backward movement for long enough to pull off without needing to use the handbrake.

## 5. BOSE® AUDIO SYSTEM

Specifically designed for the acoustics of Koleos' interior, the Bose® audio system offers outstanding sound quality. The system has a digital amplifier with seven speakers and a subwoofer. To make the most of the system, Koleos also has a dash-mounted MP3-compatible 6 CD multi-changer, an RDS radio, dual antenna and double tuner.

## 6. SATELLITE NAVIGATION SYSTEM WITH FULL COLOUR 3D MAP, BLUETOOTH® AND RDS RADIO MP3 6 CD READER WITH FINGERTIP CONTROL

Controlled using the central multimedia control, the satellite navigation system brings together all the multimedia functions: ultra-fast Renault colour navigation system with Europe DVD (30 countries), highly developed voice recognition, 2D/3D views, dynamic intersection views, Bose® sound system and a Bluetooth® hands free telephone system. The information is displayed on a 7" 16/9 ratio screen.

## 4. 4x4 INFORMATION SCREENS

The top-of-the-range satellite navigation system features a dash-mounted full colour 3D map, Bluetooth®, RDS radio MP3 6 CD reader and fingertip control. The screen displays relevant readouts for a true 4x4: altitude, compass, pressure and vehicle gradients.

Please note that features vary according to version

# COMFORT



1



2

## 1. AUTOMATIC HEADLIGHTS AND WIPERS

The front windscreen wipers with speed control are activated by rain and adapt their wiping speed to its intensity. A light sensor automatically activates the headlights when the sun goes down, or when you enter a tunnel.



3

## 2. CRUISE CONTROL / SPEED LIMITER

The cruise control / speed limiter allows you to set a cruising speed or a maximum speed. The speed can be adjusted using steering wheel controls.

## 3. PANORAMIC SUNROOF

The huge, class-leading electric sunroof brings maximum light into the passenger compartment and gives a panoramic view. It is fitted with adjustable sun shades.



4

## 4. CLIMATE CONTROL

The dual-zone climate control offers personalised comfort, allowing each front passenger to select their own ideal temperature. For maximum comfort, the rear passengers can also adjust their ventilation. The active carbon filter provides protection from pollen, dust and odours.



5

## 5. SUN SHADES

For passenger comfort, folding sun shades are fitted on the rear windows (on Dynamique S and Privilège).



6

## 6. RENAULT HANDS FREE KEYCARD

The vehicle detects the presence of the card and unlocks as you brush past a door handle or the boot. To start the engine, simply press the 'Start / Stop' button whilst pressing on the brake or clutch pedal, without needing to insert the card into the reader. To lock, simply press one of the door handles, the boot button or the card.



4



7

## 7. RADIO CONTROL

The main audio functions are easy to adjust using the ergonomic controls behind the steering wheel.

# FLEXIBILITY



## 1 - 2. SUPER-FOLD

By simply pulling on one of the levers (1) accessible from the boot or the rear seats, the seats fold away in thirds (1/3 or 2/3) or completely, to give maximum loading space.

## 3. RECLINING REAR SEATS

For comfort, the two backrests of the rear bench seat can be reclined individually (1/3 or 2/3).



## 4. ADAPTABLE INTERIOR SPACE

Depending on your needs, the seats fold down in 1/3 or 2/3 configuration to form a flat floor. Objects up to 260 cm long can also be carried by folding down the front passenger seat into a flat loading space.

# STORAGE



## 1. FRONT STORAGE OPTIONS

The front doors provide a storage compartment that can hold, for example, a 50 cl bottle. To further increase storage capacity, there are closed storage compartments in the front door armrests which can hold up to five CDs, and a drawer under the passenger seat.

## 2. GLOVE BOX

The generously proportioned 15-litre glove box is illuminated and cooled.

## 3. SPLIT TAILGATE

Opening the top part gives you all the advantages of a traditional tailgate. Opening the lower part lengthens the floor, makes it easier to load and unload heavy objects, and can seat two adults on the lower part (up to 200 kg).

## 4. REAR UNDERFLOOR LOCKERS

Two 5-litre spaces are discretely built into the rear floor.

## 5. STORAGE DRAWER

Accessible from the rear seats, a drawer behind the centre console provides an extra 2.3 litre space.\*

\* On Dynamique S and Privilège. Beige interior shown is not available in UK specification.



## 6. UNDERFLOOR BOOT STORAGE

The boot floor conceals a storage space that can be divided into compartments with a total volume of 28 litres.



## 7. SKI HATCH

The centre armrest provides a ski hatch. Plus, if you remove the armrest, you can carry a surfboard.

## 8. CENTRE CONSOLE

The multi-purpose 7.3 litre centre console houses a removable case in which you can store your CDs. (On Dynamique S and Privilège)

## 9. BOOT STORAGE COMPARTMENTS

The boot net allows you to transport items that need to be separated. There are several possible combinations thanks to the anchoring rings on the floor and walls.

# ACCESSORIES

## 1 - 2. SKID PLATES PACK

The front and rear protectors are eye-catching and enhance the definitive 4x4 look of Koleos. Perfectly integrated, they give optimum protection against everyday scratches and knocks.



## 3 - 4. GUARDS PACK

The front and rear skid plates give Koleos an extremely sporty and dynamic look.



## 5. MATS

The top-of-the-range velour textile Expression mats are in keeping with the original trim and designed to the exact dimensions of Koleos.

## 6. TINTED WINDOWS

Perfectly suited to Koleos, the tinted windows keep the inside of your vehicle safe from prying eyes for active privacy and comfort (reduction of heat, dazzle, etc.).

## 7. CHROME MIRROR TRIMS

Perfectly fitted on the standard mirrors, they bring an extra touch of class to your Koleos.



### 1. ROOF BARS AND CYCLE CARRIER

These transversal aluminium roof bars allow you to carry up to 100 kg of luggage or other accessories - like a cycle carrier, ski rack or roof box.

### 2. AUTOMATIC RDSO TOWING BALL

To preserve the external appearance of your Koleos, the RDSO towing ball can be removed in a matter of seconds with no need for tools. A swan neck version is also available.



### 3. ONBOARD VIDEO

Turn your Koleos into a cinema! Thanks to the onboard video system, the rear passengers have two 8" screens, two infrared headsets and a remote control. This system is fitted with an auxiliary input to connect a camcorder, a joystick, and so on.



# SAFETY

## 1. SEATBELTS

For best possible protection of all passengers, the seatbelts are fitted with a dual pretensioner in the driver's seat, a pretensioner with load limiter in the front passenger seat and load limiters in the rear.



## 2. REAR FOG LIGHTS

Built into the rear bumper, these improve your visibility from behind in foggy weather.

## 3. AIRBAGS AND REINFORCED STRUCTURE

The body structure has programmed deformation zones which absorb some of the energy in the event of impact. A full set of airbags (two frontal, two lateral and two front/rear curtain airbags) protects the passengers.

## 4. DEACTIVATION OF FRONT PASSENGER AIRBAGS

The front passenger airbags can be deactivated (with dashboard indicator), so that you can safely fit a child seat facing backwards in the front passenger seat.



## 6. ESP

The automatic ESP (Electronic Stability Programme) continually controls the grip of each wheel, to optimise stability on cornering, particularly on wet surfaces. (On Dynamique S and Privilège)



## 7. BRAKE ASSIST

By using full braking power as quickly as possible, this system reduces stopping distances.



## 8. FRONT AND REAR PARKING PROXIMITY SENSORS

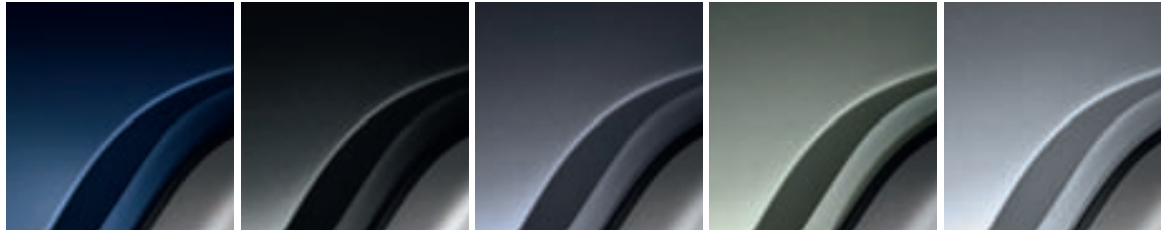
To make parking manoeuvres easier, the proximity sensors alert you to any obstacles in front or behind through a sequence of beeps that get faster as you approach the object.\*

\*On Dynamique S and Privilège.

## 5. ISOFIX SYSTEM

The rear outer seats are fitted with ISOFIX mounting points to fit a child seat safely. The mounting points are easy to access, making the system easy to use. (A wide range of ISOFIX seats are available as accessories).

# COLOURS



RXB ALPINE BLUE (NM)

GXA CARLTON BLACK (MI)

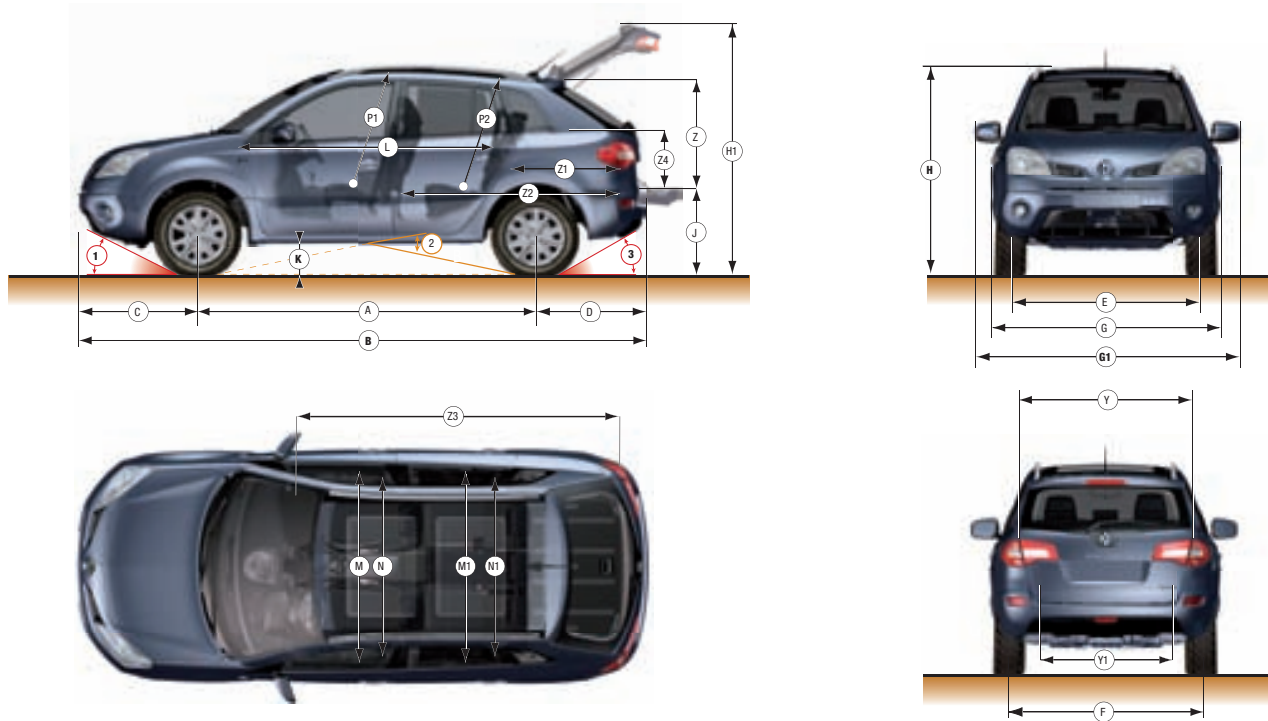
KXB SLATE GREY (MI)

DXA SANDSTONE (MI)

KXA CASCADE SILVER (MI)

It should be noted that printing limitations do not permit the subtle paintwork shades on these pages to be shown with absolute accuracy. Only personal inspection of the Koleos at your Renault Dealer will reveal it in its true colours. From time to time changes are made to the colour range. Please check availability with your Renault Dealer.

# DIMENSIONS



## Boot capacity dm<sup>3</sup>

|   |         |
|---|---------|
| <b>Under rear parcel shelf; fixed rear bench seat</b> | 401/450 |
| <b>Rear seats folded, up to roof</b>                  | 1380    |

## DIMENSIONS (mm)

|   |                       |
|---|-----------------------|
| A - Wheelbase                                   | 2690                  |
| <b>B - Overall length</b>                       | <b>4520</b>           |
| C - Front overhang                              | 955                   |
| D - Rear overhang                               | 875                   |
| E - Front track                                 | 1545                  |
| F - Rear track                                  | 1550                  |
| G - Overall width with wing mirrors folded back | 1855                  |
| G - Overall width with wing mirrors folded back | 1865                  |
| <b>G1 - Overall width with wing mirrors</b>     | <b>2120</b>           |
| <b>H - Unladen height</b>                       | <b>1695</b>           |
| H0 - Unladen height with roof rail              | 1710                  |
| H1 - Unladen height with hatch open             | 2061                  |
| J - Unladen sill height                         | 750                   |
| <b>K - Ground clearance (laden)</b>             | <b>&gt;188 to 206</b> |
| L - Cabin length at the shoulders               | 1927                  |

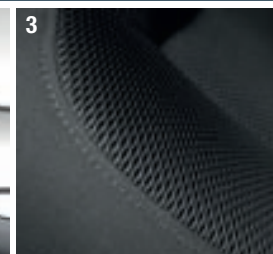
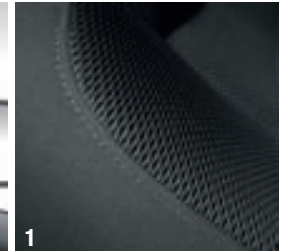
## DIMENSIONS (mm)

|  |            |
|--|------------|
| M - Front elbow width  | 1451       |
| M1 - Rear elbow width  | 1475       |
| N - Front shoulder width   | 1433       |
| N1 - Rear shoulder width   | 1421       |
| P1 - Distance from H-point to roof at front at 14°                         | 946        |
| P2 - Distance from H-point to roof at rear at 14°                          | 885        |
| Q - Height under roof upright level of the rear axle                       | 810        |
| Y - Maximum boot access width  | 1071       |
| Y2 - Inside width between wheel arches                                     | 1071       |
| Z - Rear aperture height   | 805        |
| Z1 - Maximum load length (hatch to folded rear seat)                       | 908        |
| Z4 - Height up to parcel shelf   | 452        |
| Z2 - Load length behind rear bench seat                                    | 1585       |
| Z3 - Maximum load length with front passenger seat and rear tipped forward | 2600       |
| <b>1 - Approach angle</b>  | <b>27°</b> |
| <b>2 - Ramp break over angle</b>   | <b>21°</b> |
| <b>3 - Departure angle</b>   | <b>31°</b> |

# TRIMS

## DYNAMIQUE

The Dynamique version has a Charcoal interior trim with chrome features and Charcoal cloth upholstery (1). The 17" 'Crusoé' alloy wheels (2) add to the exterior style.



## DYNAMIQUE S

The Charcoal interior trim and Charcoal cloth upholstery are complemented by a leather steering wheel and gear knob. The exterior style is emphasised by 17" 'Oasis' alloy wheels (4).

## PRIVILEGE

The Privilège model has luxurious full leather Charcoal upholstery (6), while the 17" 'Fidji' alloy wheels (7) enhance the style and elegance.



|   |  |   |
|---|--|---|
| <p><b>Safety and Security</b></p> <p>ABS with EBD (Electronic Brake Distribution)<br/>Insurance approved (Thatcham category 2) alarm<br/>Automatic parking brake<br/>Central locking<br/>Driver and front passenger auto-adaptive airbag<br/>Fog lights<br/>ISOFIX child seat mounting points on passenger seat<br/>Keyless car with Renault card</p> | <p>R.A.I.D. (Renault Anti Intruder Device)<br/>"See me Home" headlights</p> <p><b>Comfort, Driving and Versatility</b></p> <p>Body coloured bumpers<br/>Body coloured door mirrors<br/>Rear opening split tailgate<br/>Tinted windows<br/>"Smart" windscreen wipers<br/>Aircraft style tables on rear of front seats</p> | <p>Glove box - large volume cooled and illuminated<br/>Height adjustable driver's seat<br/>Satin chrome door handles<br/>Fixed centre console with armrest<br/>60:40 split folding - rear seats with armrests<br/>12V socket in centre console</p> <p style="text-align: right;"><b>CORE FEATURES</b></p> |
| <p><b>Interior Comfort</b></p> <p>Air conditioning<br/>Boot separation net<br/>Driver and passenger sun visor with mirror, cover and ticket holder<br/>Electric windows front and rear<br/>Leather steering wheel<br/>Leather gear knob</p>   | <p>Ski hatch<br/>4 x 15W mono radio CD with MP3 player, 4 speakers and 2 tweeters<br/>Aux point<br/>Cruise control<br/>Speed limiter</p> <p><b>Exterior</b></p> <p>17" 'Crusoe' alloy wheels</p>   | <p>Chrome effect longitudinal roof bars<br/>Double optic headlights</p> <p><b>Safety and Security</b></p> <p>3 years / 100,000 miles warranty</p> <p style="text-align: right;"><b>DYNAMIQUE</b></p> <p style="text-align: right;"><b>Additional standard equipment to Core Features above</b></p>        |
| <p><b>Interior Comfort</b></p> <p>Automatic lights and wipers<br/>Climate control<br/>Door mirrors - heated and electrically foldable<br/>Electric windows front and rear - 'one-touch'<br/>Folding front passenger seat<br/>Removable tray and two cup holders</p>   | <p>Super-Fold</p> <p><b>Exterior</b></p> <p>17" 'Oasis' alloy wheels</p> <p><b>Safety and Security</b></p> <p>ESP (Electronic Stability Programme)<br/>Hill Descent Control (only if 4WD)</p>  | <p>Hill Start Assist (only if 4WD)<br/>Parking proximity sensors - front and rear<br/>Renault hands free keycard</p> <p style="text-align: right;"><b>DYNAMIQUE S</b></p> <p style="text-align: right;"><b>Additional standard equipment to Dynamique (includes Core Features above)</b></p>              |
| <p><b>Interior Comfort</b></p> <p>Driver's sunglasses case<br/>Electrochrome rear view mirror<br/>Heated seats - front<br/>Kickplate with stainless plate</p>   | <p>Leather upholstery<br/>Panoramic sunroof<br/>Rear lateral window sun blinds<br/>BOSE® sound system<br/>Satellite navigational system - full colour 3D map with Bluetooth® and 4 x 50W RDS<br/>radio MP3 6 CD reader with fingertip control - dash-mounted</p>   | <p><b>Exterior</b></p> <p>17" 'Fidji' alloy wheels<br/>Bi-Xenon cornering headlights with headlight wash</p> <p style="text-align: right;"><b>PRIVILEGE</b></p> <p style="text-align: right;"><b>Additional standard equipment to Dynamique S (includes Core Features above)</b></p>                      |

# ENGINES

## AUTO-ADAPTIVE AUTOMATIC GEARBOX

This 6-speed gearbox offers the driver the choice between fully automatic or sequential shift modes. Dynamic around town and quiet running in automatic mode, or performance and low fuel consumption on the motorway in sequential shift mode.

## MANUAL GEARBOX

The 6-speed manual gearbox means easy and precise gear changes for perfect driving pleasure. The sixth gear also helps to reduce fuel consumption and CO<sub>2</sub> emissions.

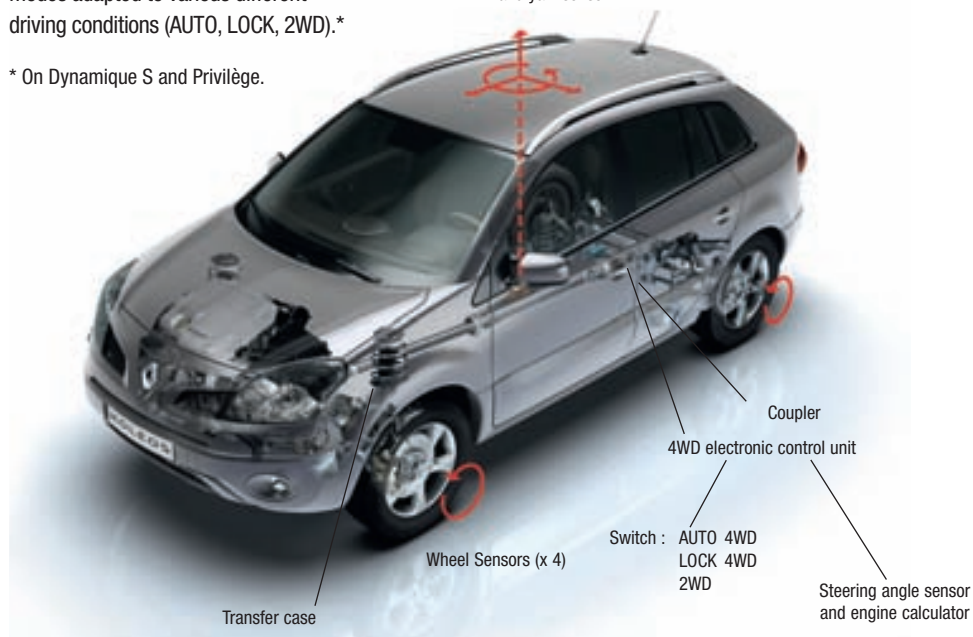


## TRANSMISSION

Fitted with a differential with electronic coupler, Koleos has three transmission modes adapted to various different driving conditions (AUTO, LOCK, 2WD).\*

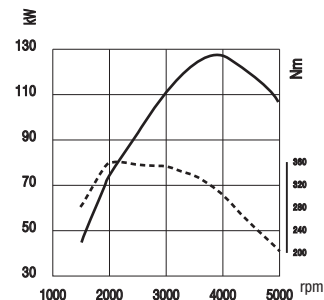
\* On Dynamique S and Priviège.

Measurement of lateral and side acceleration and yaw sensor



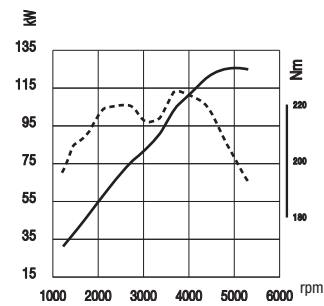
## dCi 150 HP MANUAL /AUTOMATIC GEARBOX

Fitted with a particle filter, this engine combines performance, controlled consumption and a peaceful drive.



## dCi 175 HP MANUAL GEARBOX

Slick and continuous acceleration, remarkable silence... this powerful engine, fitted with a particle filter, develops a constant torque of 360 Nm from 2,000 rpm, giving real driving pleasure.



———— Power      - - - - - Torque

# TECHNICAL SPECIFICATIONS

|  |                         | dCi 150 2 x 4        | dCi 150 4 x 4        | dCi 150 4 x 4 Auto   | dCi 175 4 x 4        |
|--|-------------------------|----------------------|----------------------|----------------------|----------------------|
| <b>ENGINE</b>                                  |                         |                      |                      |                      |                      |
| Engine emission standard                       |                         | Euro IV              | Euro IV              | Euro IV              | Euro IV              |
| Engine   |                         | M9R G 832            | M9R G 832            | M9R D 833            | M9R C 830            |
| Induction capacity                             | (cc)                    | 1995                 | 1995                 | 1995                 | 1995                 |
| Bore x stroke                                  | (mm)                    | 84 x 90              | 84 x 90              | 84 x 90              | 84 x 90              |
| Cylinders / valves                             |                         | 4 / 16               | 4 / 16               | 4 / 16               | 4 / 16               |
| Compression ratio                              |                         | 15.7:1               | 15.7:1               | 15.7:1               | 15.7:1               |
| Maximum power                                  | (kW ISO)                | 110                  | 110                  | 110                  | 127                  |
|  | (hp DIN)                | 150                  | 150                  | 150                  | 175                  |
|  | (rpm)                   | 4000                 | 4000                 | 4000                 | 3750                 |
| Maximum torque                                 | (Nm ISO)                | 320                  | 320                  | 320                  | 360                  |
|  | (rpm)                   | 2000                 | 2000                 | 2000                 | 2000                 |
| <b>WEIGHT</b>                                  |                         |                      |                      |                      |                      |
| Kerb vehicle weight                            | (kgs)                   | 1649                 | 1655                 | 1709                 | 1655                 |
|  | (lbs)                   | 3632                 | 3645                 | 3764                 | 3645                 |
| Gross vehicle weight                           | (kgs)                   | 2200                 | 2300                 | 2300                 | 2200                 |
|  | (lbs)                   | 4846                 | 5066                 | 5066                 | 4846                 |
| Maximum (driver only) braked towing weight     | (kgs)                   | 2000                 | 2000                 | 1300                 | 2000                 |
|  | (lbs)                   | 4405                 | 4405                 | 2863                 | 4405                 |
| Maximum (driver only) unbraked towing weight   | (kgs)                   | 750                  | 750                  | 750                  | 750                  |
|  | (lbs)                   | 1652                 | 1652                 | 1652                 | 1652                 |
| <b>GEARBOX</b>                                 |                         |                      |                      |                      |                      |
| Number of forward gears                        |                         | 6                    | 6                    | 6                    | 6                    |
| Vehicle speeds (mph) at 1000 rpm               | in 1 <sup>st</sup> gear | 4.75                 | 4.75                 | 5.23                 | 4.75                 |
|  | 2 <sup>nd</sup>         | 8.67                 | 8.67                 | 9.14                 | 8.67                 |
|  | 3 <sup>rd</sup>         | 13.40                | 13.40                | 13.88                | 13.40                |
|  | 4 <sup>th</sup>         | 18.72                | 18.72                | 18.93                | 18.72                |
|  | 5 <sup>th</sup>         | 24.51                | 24.51                | 25.70                | 24.51                |
|  | 6 <sup>th</sup>         | 29.73                | 29.73                | 32.08                | 29.73                |
| <b>BRAKING SYSTEM</b>                          |                         |                      |                      |                      |                      |
| Front  | Discs mm                | DV320 - e11          | DV320 - e11          | DV320 - e11          | DV320 - e11          |
| Rear   | Discs mm                | DV 392 - e8          | DV 392 - e8          | DV 392 - e8          | DV 392 - e8          |
| <b>SUSPENSION</b>                              |                         |                      |                      |                      |                      |
| Front  |                         |                      |                      | Type MacPherson      |                      |
| Rear   |                         |                      |                      | Type Multi-link      |                      |
| <b>STEERING (VARIABLE POWER ASSISTED)</b>      |                         |                      |                      |                      |                      |
| Number of turns of steering wheel lock-to-lock |                         | 3                    | 3                    | 3                    | 3                    |
| Turning circle (kerbs)                         | metres                  | 11.6                 | 11.6                 | 11.6                 | 11.6                 |
| <b>TYRES</b>                                   |                         |                      |                      |                      |                      |
| Wheel  | (")                     | 17" alloys           | 17" alloys           | 17" alloys           | 17" alloys           |
| Tyre reference                                 | Four main tyres         | 225/ 60 R17 99H      | 225 / 60 R17 99H     | 225 / 60 R17 99H     | 225 / 60 R17 99H     |
|  | Spare tyre              | 155 / 80 R 17 100M   | 155 / 80 R 17 100M   | 155 / 80 R 17 100M   | 155 / 80 R 17 100M   |
| <b>CAPACITIES</b>                              |                         |                      |                      |                      |                      |
| Fuel tank                                      | litres (gallons)        | 65 (14.3)            | 65 (14.3)            | 65 (14.3)            | 65 (14.3)            |
| Luggage capacity                               | litres                  | 450                  | 450                  | 450                  | 450                  |
| <b>PERFORMANCE</b>                             |                         |                      |                      |                      |                      |
| 0-100 kph / 0-62 mph                           | (secs)                  | 10.0                 | 10.4                 | 12.3                 | 9.9                  |
| Maximum speed                                  | (mph)                   | 114                  | 115                  | 112                  | 119                  |
|  | (kph)                   | 184                  | 185                  | 181                  | 191                  |
| <b>FUEL CONSUMPTION - 93 / 116 / EEC</b>       |                         |                      |                      |                      |                      |
| CO <sub>2</sub> Emissions                      | (g / km)                | 191                  | 197                  | 221                  | 209                  |
| Urban (cold)                                   | (mpg)                   | 31.4                 | 29.7                 | 26.9                 | 29.4                 |
|  | (litres / 100km)        | 9.0                  | 9.5                  | 10.5                 | 9.6                  |
| Extra-Urban                                    | (mpg)                   | 46.3                 | 45.6                 | 40.4                 | 41.5                 |
|  | (litres / 100km)        | 6.1                  | 6.2                  | 7.0                  | 6.8                  |
| Combined                                       | (mpg)                   | 39.2                 | 38.2                 | 34.0                 | 35.8                 |
|  | (litres / 100km)        | 7.2                  | 7.4                  | 8.3                  | 7.9                  |
| <b>SERVICING INTERVALS</b>                     |                         |                      |                      |                      |                      |
| Service interval (whichever is the sooner)     |                         | 12000 miles / 1 year | 12000 miles / 1 year | 12000 miles / 1 year | 12000 miles / 1 year |

# EQUIPMENT AND OPTIONS

|  | Dynamique | Dynamique S | Privilège |
|--|-----------|-------------|-----------|
| <b>Wheels and tyres</b>  |           |             |           |
| 17" 'Crusoé' alloy wheels  | ●         | -           | -         |
| 17" 'Oasis' alloy wheels   | -         | ●           | -         |
| 17" 'Fidji' alloy wheels   | -         | -           | ●         |
| Continental / Hankook tyres  | -         | -           | ●         |
| <b>Exterior equipment</b>  |           |             |           |
| Electrochrome rear view mirror   | -         | -           | ●         |
| Heated door mirrors  | ●         | -           | -         |
| Heated and electric folding door mirrors   | -         | ●           | -         |
| Body coloured door mirrors   | ●         | ●           | ●         |
| Black rubbing strips   | ●         | ●           | ●         |
| Chrome effect longitudinal roof bars   | ●         | ●           | ●         |
| Tailgate upper lock cover  | ●         | ●           | ●         |
| <b>Interior equipment</b>  |           |             |           |
| <b>Windows</b>   |           |             |           |
| Automatic rear wiper   | ●         | ●           | ●         |
| 'Smart' windscreen wipers  | ●         | ●           | ●         |
| 'See Me Home' headlights   | ●         | ●           | ●         |
| Remote lighting function   | ●         | ●           | ●         |
| Panoramic electric sunroof   | -         | -           | ●         |
| Headlight washers with pop-up jets   | -         | -           | ●         |
| Passenger sunvisor with mirror, cover and ticket holder  | ●         | ●           | -         |
| Passenger sunvisor with mirror, cover, ticket holder and light   | -         | -           | ●         |
| Light and rain sensors   | -         | ●           | ●         |
| Tinted laminated windscreen  | ●         | ●           | ●         |
| Heat reflecting windscreen (diesel engines only)   | ●         | ●           | ●         |
| Tinted side windows  | ●         | ●           | ●         |
| <b>Seating</b>   |           |             |           |
| <b>■ Front seat</b>  |           |             |           |
| Height adjustable driver seat  | ●         | ●           | ●         |
| Centre armrest   | ●         | ●           | ●         |
| Aircraft style tables on back of front seats   | ●         | ●           | ●         |
| Folding passenger seat   | -         | ●           | ●         |
| Seat belt undone reminder  | ●         | ●           | ●         |
| ISOFIX compatible passenger seat   | ●         | ●           | ●         |
| Height adjustable and tilting headrests  | ●         | ●           | ●         |
| Thatcham shaft in headrest   | ●         | ●           | ●         |
| Seat back pocket - driver and passenger seats  | ●         | ●           | ●         |
| Heated leather seats   | -         | -           | ●         |
| Drawer under front passenger seat  | ●         | ●           | ●         |
| <b>■ Rear seat</b>   |           |             |           |
| 60:40 split folding seats with centre armrest  | ●         | -           | -         |
| Super-Fold rear seat 60:40 (without removing headrests) with armrest, storage, cup holders                 | -         | ●           | ●         |
| Ski hatch  | -         | ●           | ●         |
| Reclining backrests (linked with 'one-touch' double folding)   | -         | ●           | ●         |
| ISOFIX compatible seats - two outer rear seats   | ●         | ●           | ●         |
| Three height adjustable "L" shape headrests  | ●         | ●           | ●         |
| <b>Storage</b>   |           |             |           |
| <b>■ Front</b>   |           |             |           |
| Passenger underfloor drawer  | ●         | ●           | ●         |
| Ashtray  | ●         | ●           | ●         |
| Cooled and illuminated glovebox  | ●         | ●           | ●         |
| Fixed centre console with 12V socket   | ●         | -           | -         |
| Multi-functional centre console with 12V socket, two cup holders, removable tray and rear passenger drawer | -         | ●           | ●         |
| <b>■ Rear</b>  |           |             |           |
| Storage areas under rear carpet with locking (right and left)  | ●         | ●           | ●         |
| Storage under carpet in boot   | ●         | ●           | ●         |
| Lateral storage behind wheels  | ●         | ●           | ●         |

|  | Dynamique | Dynamique S | Privilège |
|--|-----------|-------------|-----------|
| <b>Heating and ventilation</b>   |           |             |           |
| Air conditioning   | ●         | -           | -         |
| Cooled glovebox  | ●         | ●           | ●         |
| Climate control - dual zone with rear passenger switches   | -         | ●           | ●         |
| <b>Visibility and lighting</b>   |           |             |           |
| Driver and passenger reading spotlights  | ●         | ●           | ●         |
| Front fog lights   | ●         | ●           | ●         |
| Bi-Xenon headlights with fixed cornering lights and headlight washers  | -         | -           | ●         |
| <b>Comfort and convenience</b>   |           |             |           |
| Side armrests  | ●         | ●           | ●         |
| Cigar lighter near gearstick   | ●         | ●           | ●         |
| Door pocket compatible with bottle and mobile ashtray  | ●         | ●           | ●         |
| Integrated coat hanger on back of driver's seat  | ●         | ●           | ●         |
| Super-Fold (two levers)  | -         | ●           | ●         |
| R.A.I.D. (Renault Anti Intruder Device) automatic door locking at > 6mph   | ●         | ●           | ●         |
| Four luggage tie hooks (compatible with three way fixing net)  | ●         | ●           | ●         |
| Four electric windows with 'one-touch' control   | -         | ●           | ●         |
| Four electric windows with 'one-touch' and anti-pinch for driver only  | ●         | ●           | ●         |
| Sunglasses holder on driver's side   | -         | -           | ●         |
| Door locks with electric central door locking  | ●         | ●           | ●         |
| Rear shelf with one roller and board   | ●         | ●           | ●         |
| <b>Driving and safety</b>  |           |             |           |
| Keyless car with Renault card  | ●         | ●           | ●         |
| Hands free keycard - doors unlock as you approach, no need to insert card into reader to start engine            | -         | ●           | ●         |
| Volumetric alarm   | ●         | ●           | ●         |
| ESP (Electronic Stability Programme)   | -         | ●           | ●         |
| Cruise control and speed limiter   | -         | ●           | ●         |
| Automatic parking brake  | ●         | ●           | ●         |
| 4WD system control (2WD/AUTO/4WD)  | ●         | ●           | ●         |
| Hill Start Assist / Hill Descent Control (only if 4WD)   | -         | ●           | ●         |
| 4WD declining compass  | -         | ●           | ●         |
| Adjustable steering - tilt and telescopic Ø370 mm  | ●         | ●           | ●         |
| Driver's airbag  | ●         | ●           | ●         |
| Leather steering wheel   | ●         | ●           | ●         |
| Parking proximity sensors - front and rear   | -         | ●           | ●         |
| Trip computer  | ●         | ●           | ●         |
| Temperature gauge  | ●         | ●           | ●         |
| Curtain, lateral and side airbags  | ●         | ●           | ●         |
| Deadlocking  | ●         | ●           | ●         |
| 70 litre fuel tank   | ●         | ●           | ●         |
| <b>In car entertainment</b>  |           |             |           |
| 4 x 15W radio CD with MP3 player   | ●         | ●           | -         |
| 4 x Bose sound system  | -         | -           | ●         |
| Satellite navigation system - full colour 3D map with Bluetooth, RDS radio MP3 6 CD reader and fingertip control | -         | -           | ●         |
| <b>Additional options and accessories</b>  |           |             |           |
| Metallic Paint   | ○         | ○           | ○         |
| Guards Pack  | ○         | ○           | ○         |
| Roof Spoiler   | ○         | ○           | ○         |
| Skid Plate Pack  | ○         | ○           | ○         |
| ● = Standard   ○ = Optional   - = Not available  |           |             |           |



## THE ECOLOGICAL FOOTPRINT ACCORDING TO RENAULT



Renault's environmental policy is based on an understanding of the ecological challenges that our planet faces. By launching the Renault eco<sub>2</sub> initiative, Renault underlines its commitment to protecting the environment and so offers a range of vehicles that are both economical and ecologically sound.

- **ECOLOGICALLY SOUND** through a commitment to reducing the environmental impact for the entire lifespan of the car. From the outset, each new project incorporates production processes, choice of materials, pollutant and CO<sub>2</sub> emissions, fuel consumption and recycling.

- **ECONOMICAL** in terms of fuel consumption. Renault emphasises that the solutions to many great ecological challenges lie in technological advancements that can be applied to the majority of vehicles whilst maintaining attractive pricing.

- **RECYCLING** Renault strives to manufacture vehicles that are environmentally safer than ever before. One of Renault's strengths is its capacity to integrate the environment into every stage of a vehicle project right from the design phase until the end of its life cycle. Eco-design of current Renault vehicles enables 95% of their weight to have a second life. It also means that an increasing number of components are made of recycled plastics and renewable materials. For further information on Renault and the environment please log on to our website, [www.renault.co.uk](http://www.renault.co.uk).



## RENAULT. THE STANDARD IN SAFETY.



Renault's continuous work in the field of safety has reaped rewards: with eight vehicles\* awarded 5-star ratings in Euro NCAP crash tests, Renault is now the leading manufacturer in terms of occupant protection. Renault's expertise in safety is applied from the very start of the vehicle design process, and incorporates high quality systems in order to: Prevent risks thanks to the driving safety features. Correct driving errors to prevent accidents as far as possible.

Protect all of the vehicle's occupants in the event of an accident, no matter where they are seated. Furthermore, Renault considers safety from a global viewpoint. Not only do we develop and manufacture the safest vehicles available to date, but we also act to improve the behaviour of today's road users. As a result, Renault raises road safety awareness amongst even the youngest of road users by means of an international training programme which is run in schools and colleges.

\* Please note that Vel Satis is not available in the UK.

\* Euro NCAP (European New Car Assessment Programme) is an independent organisation.



## RENAULT, 2005 & 2006 FIA FORMULA 1 CHAMPIONS



### FORMULA 1, A SCHOOL OF EXCELLENCE

Formula 1 is an extremely demanding sport. It teaches us that what really counts, besides performance, is the ability to construct reliable cars which won't let you down, despite being subjected to extreme physical conditions.

We have applied this philosophy not only to our racing cars, but also to the construction of our road cars. Because our commitment to Formula 1 has only one aim: to teach us how we can offer you reliable, safe, high performance cars, upon which you can always rely.

# WHO BETTER THAN RENAULT TO SERVICE YOUR RENAULT?

**3** YEARS WARRANTY  
60 000 miles

Your new Renault is covered by a 3-year warranty package – the first 2 years of unlimited mileage Renault manufacturer warranty, followed by a further year of cover up to 60,000 miles\*.

This requires full servicing history according to Renault UK approved current standards. Paintwork is also guaranteed for 3 years while the anticorrosion warranty runs for 12 year (Master anti-corrosion warranty runs for 6 years). In addition, the Renault Assistance plan ensures prompt help in the UK and Northern Ireland for manufacturer defects for 24 months (36 months for light commercial vehicles, or cars registered before 1st September 2006).

## FINANCE OPTIONS

There are a wide variety of ways in which the purchase of a new car can be financed. Renault Finance offers all of them, so whether you're a fleet buyer or a private buyer, Renault Finance is ideally placed to tell you which plan or combination of plans best suits your needs and circumstances.

## RENAULT FOR YOU

Renault For You is a collection of products designed for making motoring easy:

- Extended Warranty for New Vehicles allows you to extend your Renault Warranty up to 5 years or 100,000 miles.
- Extended Warranty for Used Vehicles.
- Renault Assistance Added Cover provides you with the services of the AA for certain problems that are not covered by Renault Assistance: punctures, incorrect (or lack of) fuel, keys lost, stolen or locked inside the vehicle, road traffic accidents, incidents involving caravans and trailers
- MOT Test Warranty offers you protection should your car fail its MOT Test. For further information about these products, ask your Renault Dealer or simply log on to [www.renault.co.uk](http://www.renault.co.uk) and click on 'Owner Services', where you can purchase all of them securely online.

## RENAULT NETWORK SERVICES

No-one is better placed than Renault to maintain, fit and repair your Renault, fast. The Renault Minute (maintenance and repair with no appointment necessary) and Renault Rapide Bodycare (bumper scuffs, dings and dents, windscreen, stone chips and interior repairs...) services deliver the highest level of repair and maintenance and offer a full year's guarantee on Original Renault Parts. And don't forget to have a look at our wide range of additional equipment and accessories!RENAULT INSURANCE

A car as well designed as your Renault deserves an insurance policy to match. Renault Insurance has been specifically created to provide superb protection for you and your car.\*\* In addition to a very competitive premium Renault Insurance also includes: a free 24-hour accident recovery programme; Renault Genuine parts fitted in Renault Accident Repair Centres, protecting your 12 year anti-corrosion warranty; repairs guaranteed for 3 years; a courtesy car for the duration of any repairs - subject to availability when you use an approved repairer; payment by instalments - subject to status. Call: 0845 603 8256 or visit [www.renaultinsurance.co.uk](http://www.renaultinsurance.co.uk)

Lines open 8am – 8pm weekdays, 9am – 2pm Saturdays  
Calls may be recorded. Terms and Conditions apply. All quotes are based on individual circumstance and subject to insurers underwriting criteria. Renault insurance is arranged and administered by Equity Insurance Brokers Limited, which is authorised and regulated by the Financial Services Authority. Registered Office: Library House, New Road, Brentwood, Essex, CM14 4GD. Registered in England No. 258414

\* 100,000 miles for Koleos, Laguna and Espace.

\*\* Note: this does not apply to vans or Renaultsport cars.



## CUSTOMER SERVICES

Renault knows the value of communicating with its customers and we have established effective ways to keep in touch with you. If after speaking to your local Renault dealership you are not completely satisfied, please contact the Renault UK Customer Service Department on **0800 072 3372** (Mon-Fri 8.30am to 6.00pm). You can also visit our website [www.renault.co.uk](http://www.renault.co.uk) Or write to us at: **Renault UK Ltd, The Rivers Office Park, Denham Way, Maple Cross, Rickmansworth, Hertfordshire, WD3 9YS.**

# KOLEOS



([www.renault.co.uk](http://www.renault.co.uk))

**3**  
YEARS WARRANTY  
100 000 miles

RENAULT recommends 

Although every effort has been made to ensure that the information contained within this brochure is as accurate and up to date as possible, Renault U.K. reserves the right to modify its models without notice including their characteristics, specifications, equipment and accessories. Brochures inevitably become out of date or inaccurate in some respects, in that such characteristics, equipment, specifications or accessories may be changed after the publication date given below and can differ from the descriptions given. It is therefore necessary to check with your Renault dealer before purchasing any product that the characteristics, specifications, equipment or accessories of the vehicle on order are as advertised. Publication date June 2008.