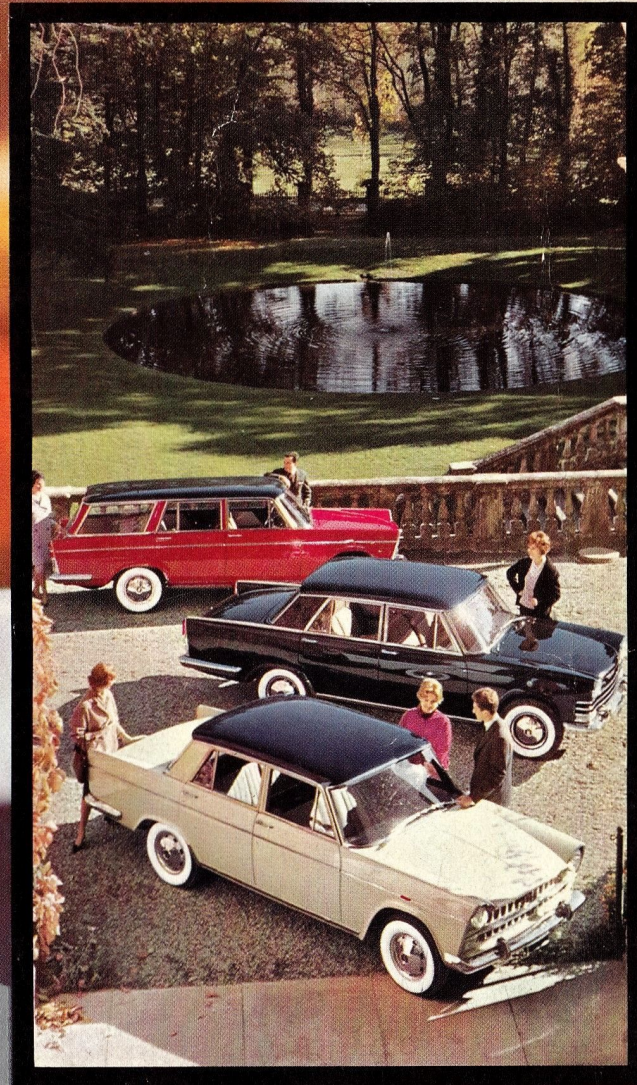


Sea  
De  
1800 St.  
2100 "



**FIAT 1800 - 2100**

# The 6 cylinder FIAT 1800-2100

The FIAT 1800-2100, 6-cylinder, is a European high class car of medium displacement. It is available with either a 1800 c.c. or a 2100 c.c. engine.

Model 1800-2100 offers not only the advantages of a 6-cylinder engine, but also more brilliant performance according to the latest automobile engineering practice.

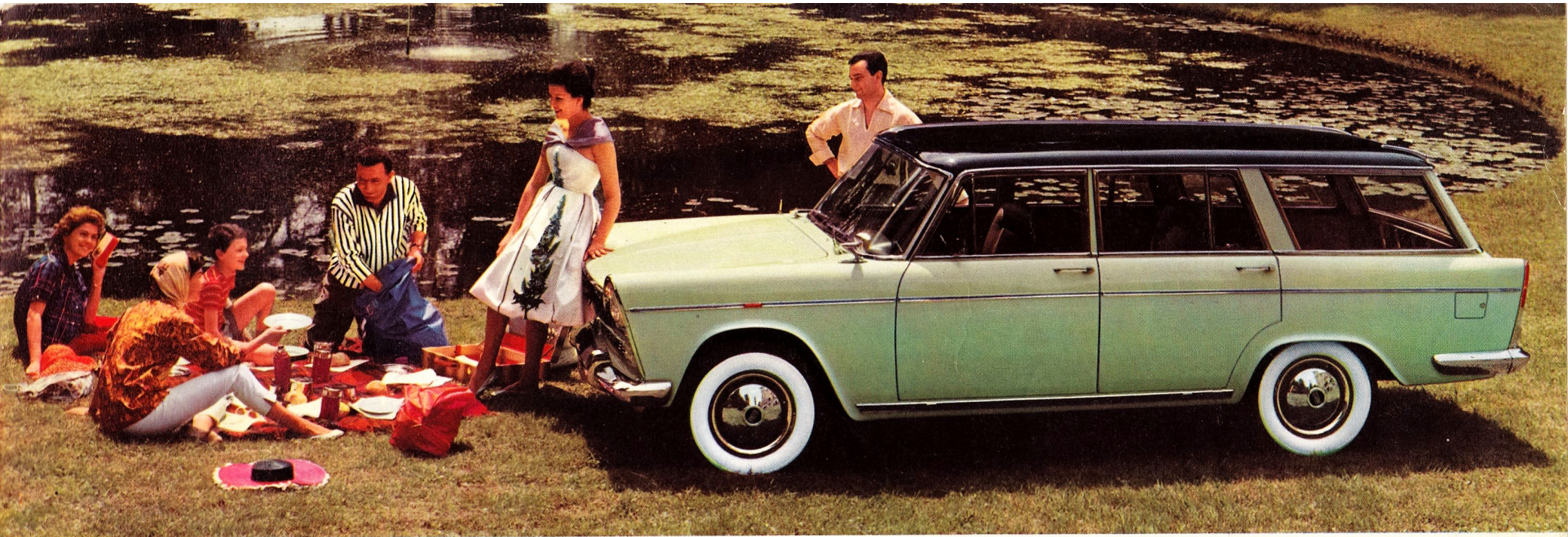
A most modern car built to fine precision standards and of beautiful line - "Turin styling". Not excessively large, it is nimble in heavy traffic and slips easily into any parking place.

Speed of the Sedan from over 87 miles (140 km) to about 93 miles (150 km) per hour, according to choice of engine.

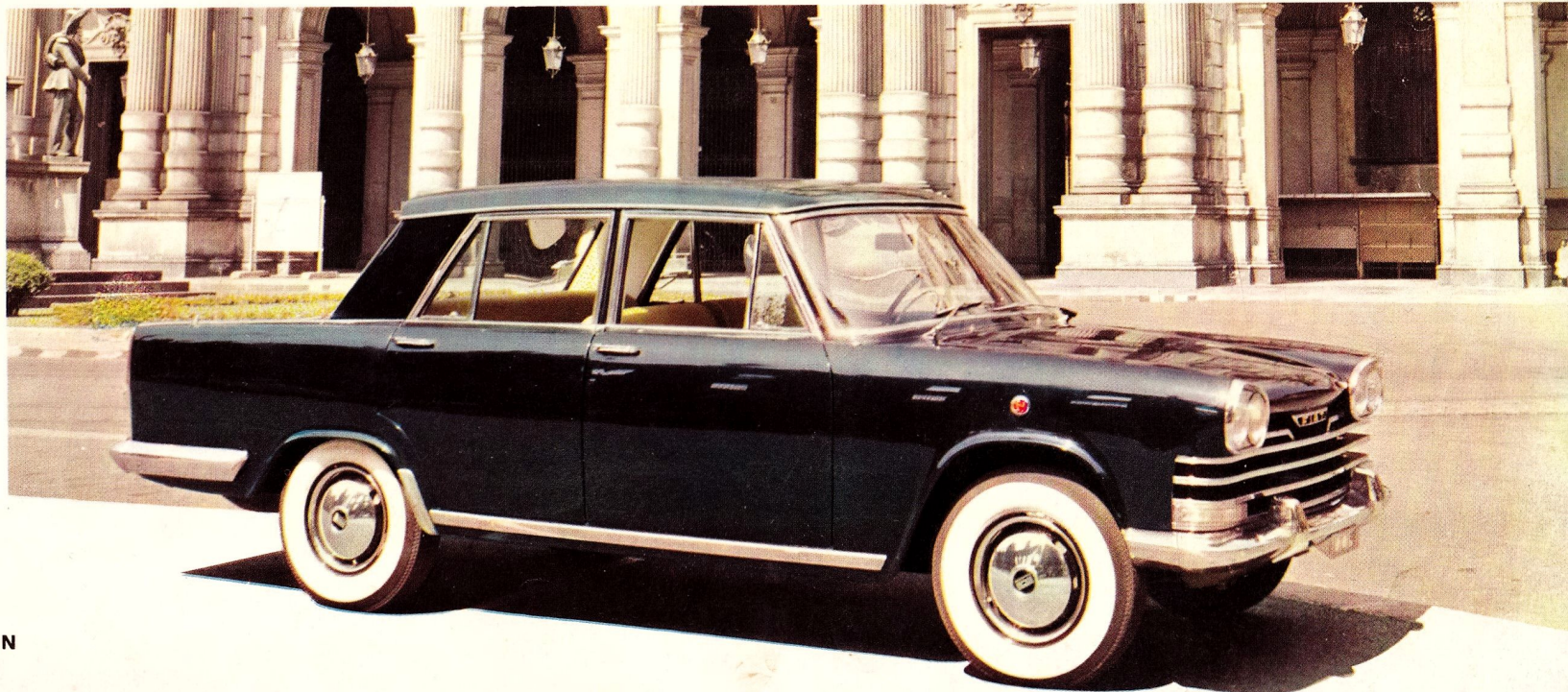
This model - both with the 1800 and with the 2100 engine - offers a choice of two types of body: 5-6 seater saloon or station wagon, both with interior finish and accessories such as befit a high-class car. The 2100 is also available with a saloon body of particular distinction, especially suited for use as a ceremonial carriage.

THE 1800-2100 SEDAN





**THE 1800-2100 STATION WAGON**



**THE 2100 ENGINE SPECIAL SEDAN**

## technical specification

**Integral construction.** Wheelbase 2.65 m. (104-5/16"). Front track 1.34 m. (52-3/4"), rear track 1.307 m. (51-29/74").

**Engine:** 6 cylinders.

**Displacement 1795 c.c. (109.53 cu. ins.) - 85 h.p. (SAE).** Bore 72 mm. (2.83"), stroke 73.5 mm. (2.89"). **Displacement 2054 c.c. (125.34 cu. ins.) - 95 h.p. (SAE).** Bore 77 mm. (3.03"), stroke 73.5 mm. (2.89"). Compression ratio 8.8 : 1. Cast iron cylinder block. Aluminium cylinder head. Counterbalanced, four-bearing crankshaft. Overhead valves. Inverted twin choke carburetor with automatic starter and pick-up pump. Cold and preheated air intake with filter and silencer. Mechanical pump fuel feed to carburetor. Forced lubrication by gear pump. Centrifugal oil filter. Cooling water circulated by centrifugal pump. Starting by electromagnet. Engine-clutch-gearbox unit mounted on resilient pads.

**Clutch,** single plate dry, hydraulically operated.

**Gearbox** with 4 forward speeds and reverse. Free ring synchroniser for engagement of 1st, 2nd, 3rd and 4th gears. Gear lever under steering wheel.

**Propeller shaft** in two sections with central rubber mounted bearing, cardan joints on rear section and flexible rubber joint on front section.

**Rear axle** with hypoid final drive gears, ratio 10/43.

**Front suspension** by torsion bars and wishbones; antisway bars, double acting telescopic shock absorbers, antiroll bar.

**Rear suspension** by coil springs and flat, longitudinal leaf springs; transverse antisway bar connected to rear axle and to body by rubber bushings. Double acting telescopic shock absorbers.

**Steering** by worm and roller.

**Brakes:** front with double cylinder expansion metal shoes; rear brakes with leading metal shoes, pressure booster on front wheels, pressure regulator on rear wheels. Emergency and parking brake acting on rear wheel brake shoes.

**Fuel tank** at rear. Capacity 60 liters (13 Imp. or 16 U. S. gallons).

**Disc wheels** with 4 1/2 J rims and 5.90-14 tires.

**Electrical equipment,** 12 Volts, 400 Watt generator. 40 amp/h. battery.

**Headlights:** with two lights and asymmetrical beam.

**Windshield washer.**

**Speed:** over 87 miles (140 km) to about 93 miles (150 km) per hour, according to choice of engine.

### differing details 1800-2100 Station Wagon

**Displacement** 1795 c.c. - 82 h.p. (SAE).

2054 c.c. - 90 h.p. (SAE).

**Hypoid final drive:** { 1800 Station wagon: 8/37  
2100 Station wagon: 9/40.

**Tires:** 6.40 - 14.

**Speed:** about 84 miles (135 km) to about 87 miles (140 km) per hour, according to choice of engine.

### 2100 Special Saloon

**Hypoid final drive:** 9/40.

**Tires:** 6.40 - 14.

**Dual headlights:** the two inner lamps are for high beam, the outer lamps for asymmetric low beam.

**Speed:** about 84 miles (135 km) per hour.

The descriptions and illustrations in this folder are given merely as general information and are not binding. FIAT therefore reserve the right, whilst maintaining the fundamental features of the models here described and illustrated, to effect at any time and without notice, those alterations to parts, fittings or equipment of accessories that they may eventually think fit to make by way of improvement, or for any reason whatsoever of a manufacturing or commercial nature.

## The 6 cylinder FIAT 1800-2100

