

the 600 Multipla **all service**



FIAT

**for 6 persons
and for dual use**
(passengers and goods)

the 600 *multipla* all service

The **600 all service** is a development of the 600, with increased accommodation and a greater variety of uses.

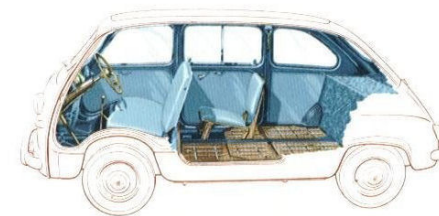
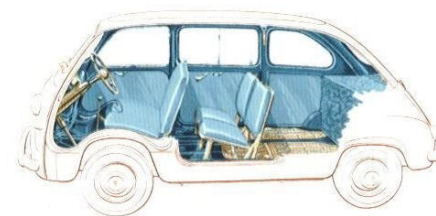
It is the **600 for 6**: 6 people, 6 seats.

It is the **dual purpose 600**. When the rear seats are not occupied, their squabs can be folded down, thus forming a platform which provides a large loading space for luggage, goods and various articles.

This car offers greater opportunities for family use and can be put to many practical uses in every field of activity: commerce, industry, handicrafts and farming. It is useful to shopkeepers and wholesale Firms; in town and country life and for sporting purposes.

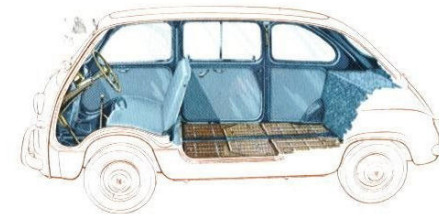
The immense success of the **600** is unprecedented, thanks to the technical qualities of the little, economical, utility 4-seater.

The **600 all service** further enhances this success, because it makes the car useful in a multitude of new ways.

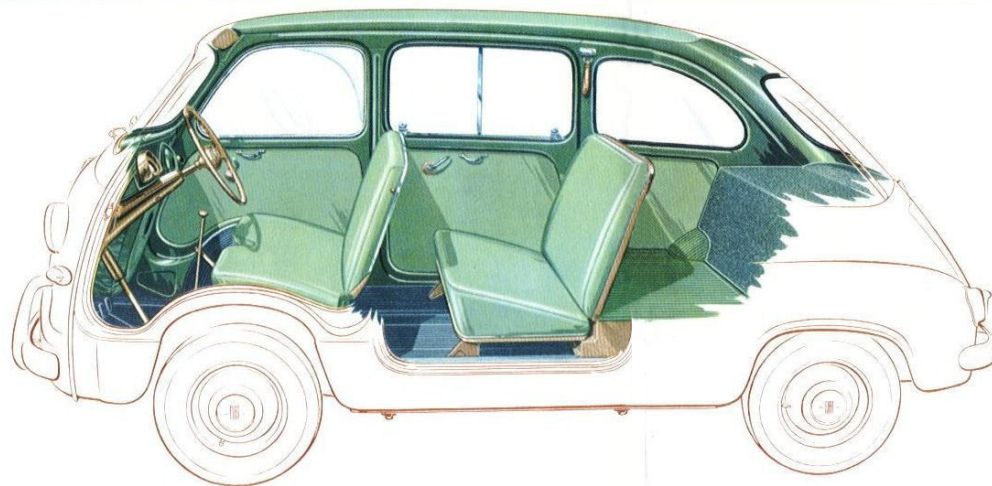


6-seater version

Fixed bench seat in front. The 4 back seats, separate and with fold-down back squabs, allow of the loading space being used in different ways: when all the 4 rear seats are folded down a loading platform of over 1.75 sq. mts. (19 sq. feet) is formed. Maximum load 350 kg. (770 lbs), plus driver.



for 6 persons and for dual use



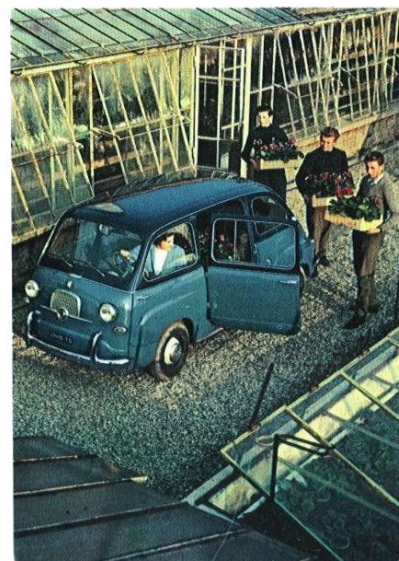
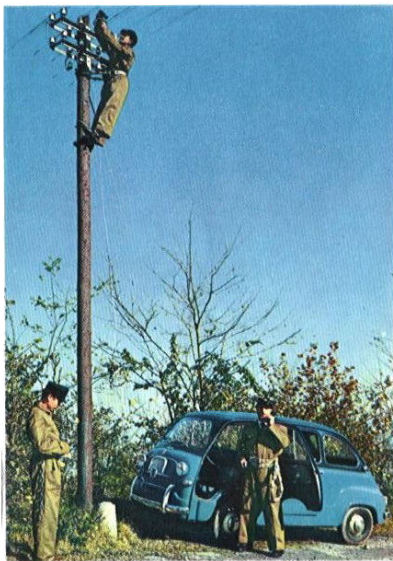
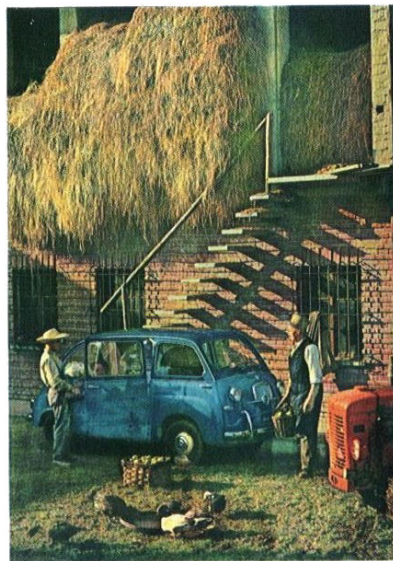
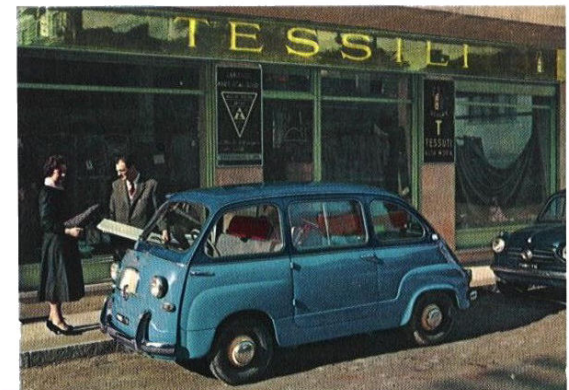
4/5-seater version

Fixed bench seat in front as in the 6-seater version, and behind it a single, fold-down bench seat for 2-3 persons. When this latter is folded down the same loading space of 1.75 sq. mts. (19 sq. feet) as in the 6-seater version is formed. (Load up to 350 kg., 770 lbs, plus driver).



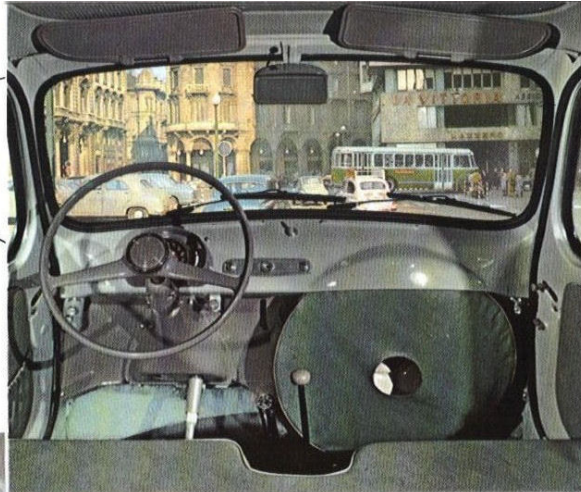


***multiplicity
of uses and
purposes***



development of the 600

ultra modern mechanical and body design



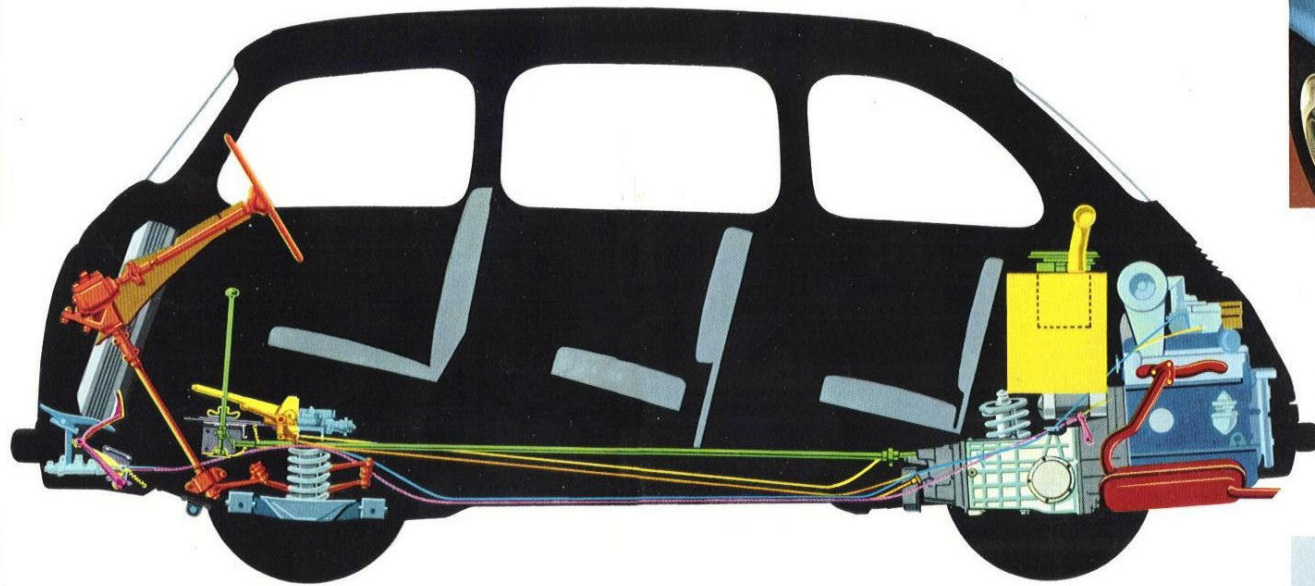
steering

The forward position of the driver's seat in the "600 all service" makes driving easier and affords excellent visibility all round, more than in any other type of car. Steering is easy and comfortable. The spare wheel, in an imitation leather cover, is stowed under the fascia board.



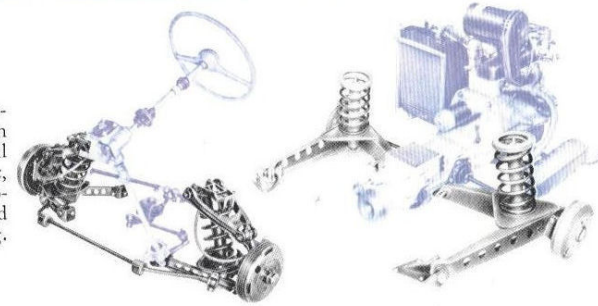
rear engine

The engine, clutch, gearbox, differential and final drive are mounted as a single, easily accessible unit at the rear of the car. The engine has O.H.V. and is water cooled.



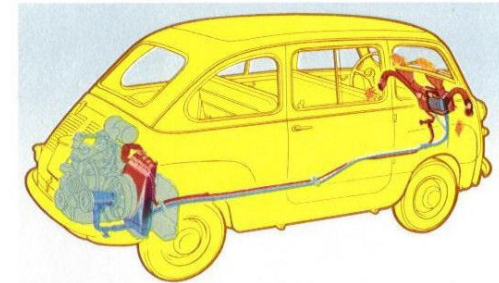
suspension

All 4 wheels are independently sprung on wish bones with coil springs and telescopic, hydraulic shock absorbers. Excellent road holding and springing.



heating

Heating is by air drawn in through an inlet in the front of the car and passed through a radiator. The air temperature can be regulated.



new body developments

Comfortable, well placed seats, easily accessible through the 4 doors. Highest possible ratio between internal capacity and external dimensions. Fine lines, pleasing appearance.

ventilation

Wind-up windows to the front doors with plexiglass draught deflectors. Air intake in front of car.

4 doors

Easy access to both front and rear seats. Easy loading.



**speed about 90 km
(56 miles) p.h.**

**load 350 kg
(770 lbs)**

body

All-steel integral construction as in every modern car. Compact and sturdy. 4 wide doors giving easy access to all seats.

technical data

Integral construction. Wheelbase 6' 6.3/4" (2 mts.). Front track 4' 0.15/64" (1.225 mts.) rear track 3' 9.1/4" (1.151 mts.).

Engine. 4 cylinders o.h.v., 60 mm. bore, 56 mm. stroke. 633 cc. Maximum output 22 b.h.p. Cast iron crankcase. Aluminium cylinder head with valve seat inserts and built-in inlet manifold. Three-bearing crankshaft. Downdraught carburettor with choke. Combined air intake silencer and filter. Carburettor choke lever on floor tunnel. Diaphragm pump fuel feed. Forced lubrication by gear pump. By-pass oil filter, pressure limit valve. Water cooling with centrifugal pump and fan mounted on pump spindle. Thermostat temperature control. Temperature tell-tale light on the dashboard. Coil and battery ignition. Electric starter. Starter motor controlled by lever on floor tunnel. Power unit placed in rear of car and suspended on three rubber mountings.

Clutch, single plate, dry.

Transmission to rear wheels through two half-axes connected to the differential by universal joints.

Differential and final drive gears incorporated in gearbox. Ratio 7:45.

Gearbox. 4 forward speeds and reverse. Constant mesh 2nd, 3rd and top gears. Loose ring synchroniser on 2nd, 3rd and top gears. Gear lever on floor tunnel.

Front suspension: Independent wheels: wishbones with coil springs and double-acting, telescopic, hydraulic shock absorbers. Anti-roll bar.

Rear suspension: Independent wheels: coil springs and double-acting, telescopic, hydraulic shock absorbers on wishbones.

Steering by worm and roller.

Hydraulic brakes on all 4 wheels. Emergency hand brake with lever mounted on floor tunnel.

Disc wheels with 3.1/2 rims. Type 5.20-12 tyres.

Petrol tank mounted in rear of car. Capacity 6.1/4 Imp. gallons (about 29 litres).

Ventilation through an air intake in front of car and **heating** by means of an internal radiator coupled to the engine cooling water circuit.

Electrical equipment 12 Volts. 180 Watt dynamo with voltage regulator. 28 Amp/hr battery. Double filament headlamps (full beam and dimmed). Twin light side lamps (parking and flashing direction lights). Tail lamp. Rear lamps giving 4 indications (parking, stop, prism reflector and flashing direction indicators). Double arm electric screenwiper (with automatic parking of arms at end of travel). Interior lighting by two side lamps with switch. Electric horn. Driving mirror with switch-operated courtesy light (also lights up automatically when driver's door is opened). Engine space illuminated. Combined dashboard panel (speedometer, petrol gauge with warning reserve indicator, oil pressure warning light, water temperature and battery charging warning lights). Screenwiper switch. Instrument panel light switch. Ignition and outside lights switch with fuses. Direction indicator warning light.

The descriptions and illustrations in this catalogue are given merely as general information and are not binding. FIAT therefore reserve the right, whilst maintaining the fundamental features of the models here described and illustrated, to effect at any time and without notice, those alterations to parts, fittings or equipment of accessories that they may eventually think fit to make by way of improvement, or for any reason whatsoever of a manufacturing or commercial nature.