



PROTON
WAJA

PROTON WAJA

A Dramatically Different Drive

PROTON WAJA

A dramatically different body



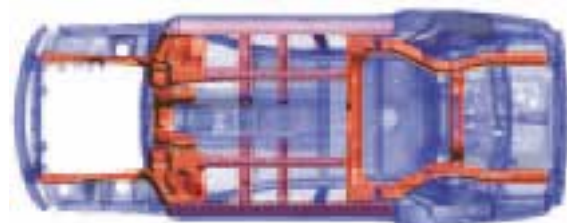
Listen to the solid sound as you close the door of a new Proton Waja. It's the unmistakable sound of a stronger, safer car.

Waja is engineered to the highest standards with a passenger safety cell that dissipates energy to protect the occupants.

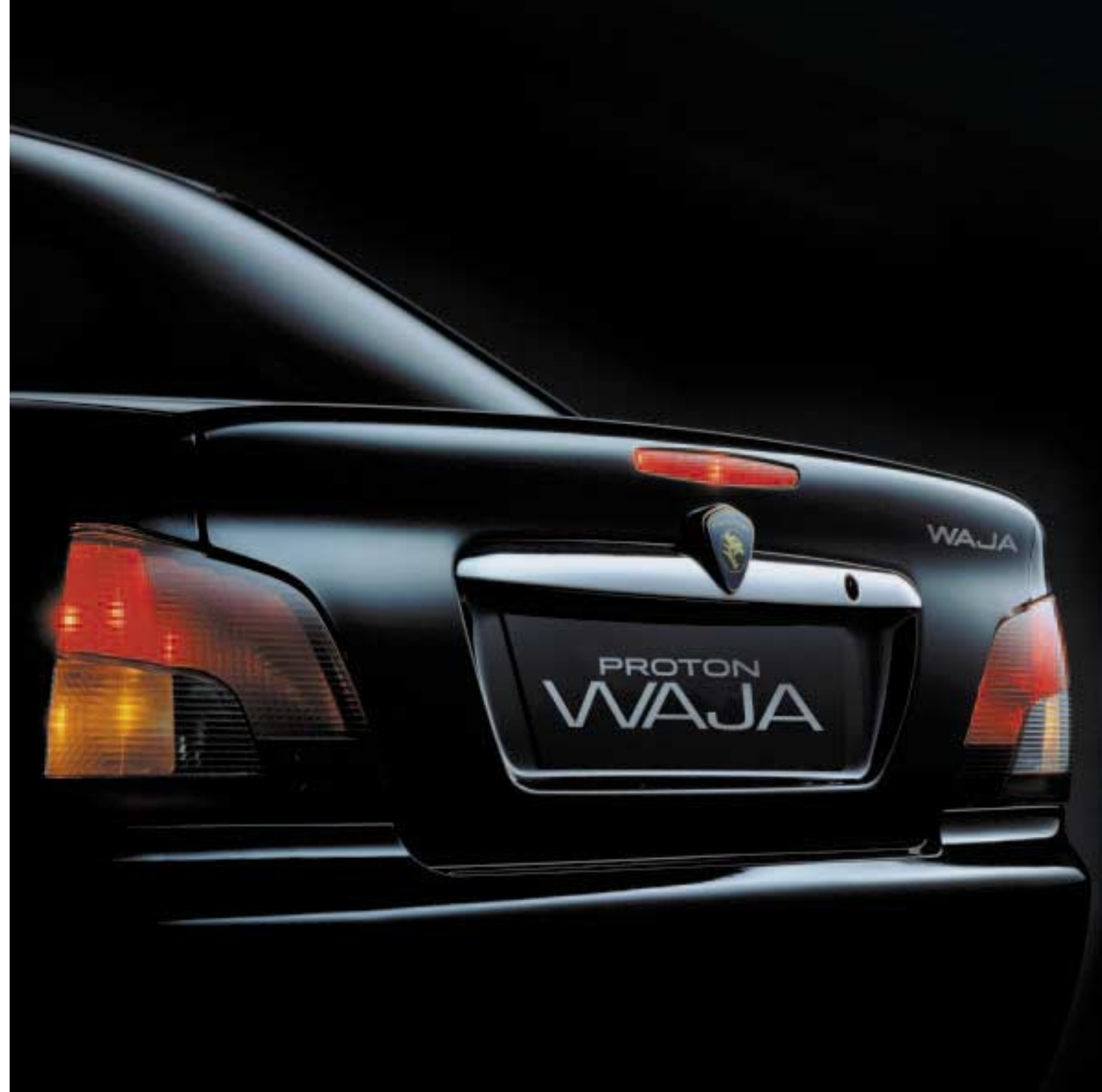
It has thicker steel, tougher reinforcement, new levels of body and floor-plan rigidity and strength. It's a standard of engineering you could only find in the European vehicles recognised specifically for their safety credentials, before now.

All these factors not only makes Waja stronger and safer, but vibration is absolutely minimised and on the road the interior is amazingly quiet.

Proton Waja. The new benchmark in its class for build-quality and safety.



Tough body reinforcement



Legendary Lotus engineering

Dramatically different ride & handling

One test drive will convince you Proton Waja performs with precise control and effortless comfort.

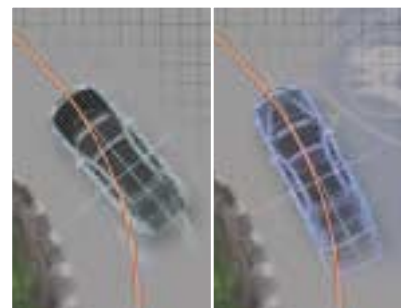
No wonder. It has the magic of Lotus engineering. Lotus suspension, developed and honed in Europe for a superb ride and pinpoint handling.

This is combined with Waja's body strength, to reduce torsion and bending, and dampen bumps in the road. All of which means you have much more control in every corner.

Proton Waja. It's world class in terms of all-round driving comfort.



Independent front McPherson strut for superior ride and handling



Other Vehicle

Proton Waja with Lotus Ride and Handling



PROTON WAJA

Tested to dramatically different standards



Waja's power windows were tested the usual 30,000 times. But then we pushed the bar up to 50,000 times, and then a bit more.

Three years in the making, all parts of the Proton Waja have been subjected to thousands of hours of testing. Often, far beyond the requirements of world standards.



The strong frame and efficient design of the car is easier to build and test. And Waja's modular construction uses stronger and larger modules instead of many different smaller, weaker parts.

It's this overall emphasis on quality that enables Proton Waja to pass the most stringent independent tests for crash-worthiness, safety and emission.



PROTON WAJA

Dramatically different safety features

A quality ride is incomplete without peace of mind. Peace of mind concerning the safety of you and your passengers. Peace of mind so you can concentrate on the road ahead.

With Proton Waja, you can have peace of mind.

With a selection of optional features such as disc brakes fitted with an Anti Lock Braking System. A Traction Control System that prevents wheel spin. Seatbelt pre-tensioner to reduce risk of severe injury. Front and side airbags... and more.

All designed with safety, and you in mind.



Driver's electronic SRS airbag



Experience PROTON **WAJA**

A Dramatically Different Drive

When you drive the Proton Waja, you'll appreciate the smoothness created by its combination of body strength and Lotus ride and handling.

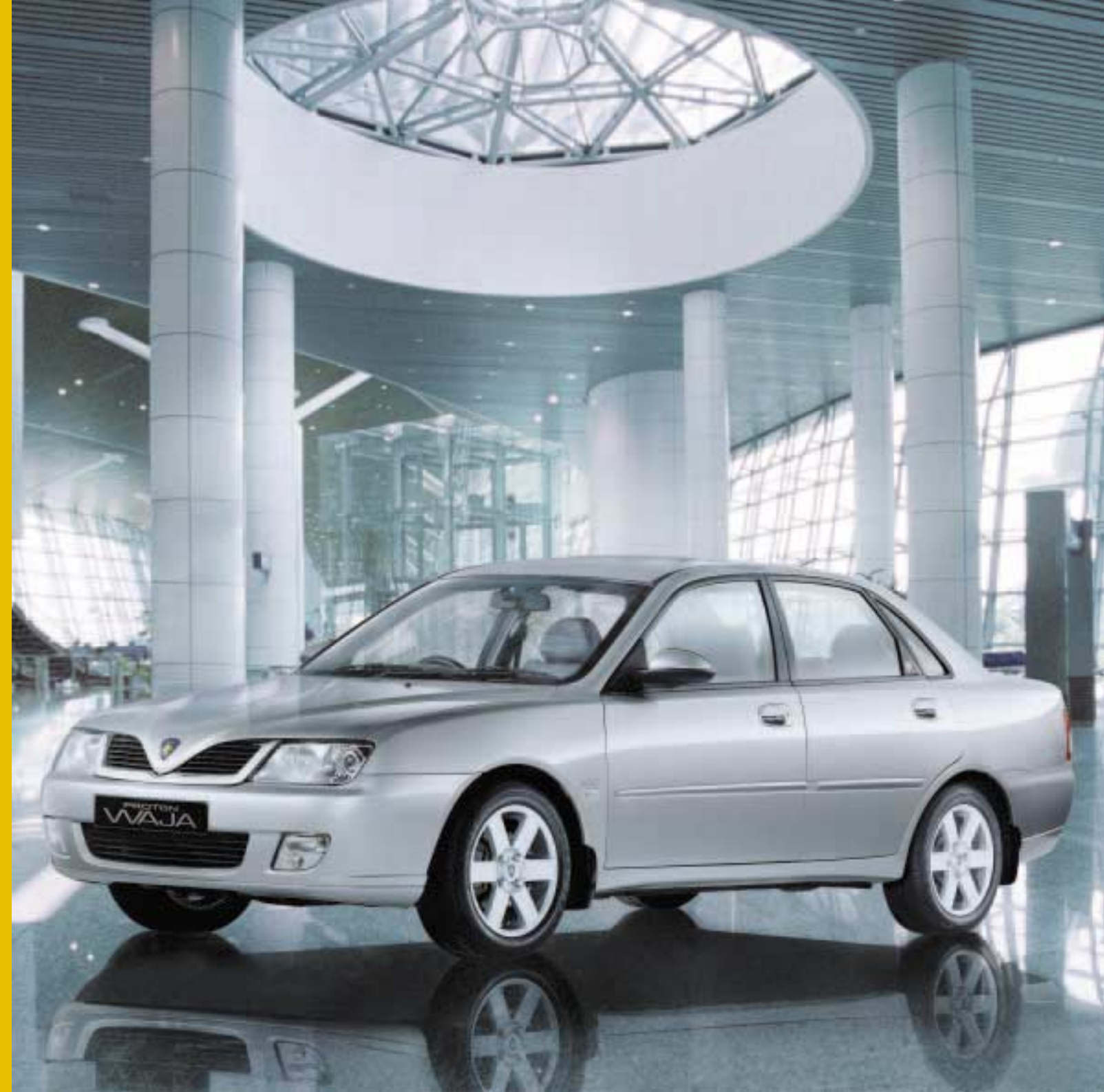


You'll feel the unique balance of power and torque generated by a zesty multi-valve engine which delivers uncompromising performance and excellent fuel economy.

It's a special feeling of confidence and driving pleasure that comes from strength, safety and control.

You'll enjoy Proton Waja. It's a lot more than you expect, and everything you deserve.





PROTON WAJA

A Dramatically Different Drive



HANDLING BY
LOTUS 

PROTON WAJA 1.6

Specifications

Standard Features	5MT	4AT
Powertrain		
Engine	4G18 S4 MPI with emission standard EC 94/12	
Maximum power	76 kW @ 6000 rpm	
Maximum torque	140 Nm @ 2750 rpm	
Transmission	F5M41	F4A41
Gear Ratio	1st 3.583	2.842
	2nd 1.947	1.529
	3rd 1.343	1.000
	4th 0.976	0.712
	5th 0.804	-
Reverse	3.416	2.480
Final	4.052	4.042
Fuel System	MPI	
Bore and stroke	76.0 mm x 87.3 mm	
Displacement	1584 cc	
Chassis		
Front suspension	MacPherson strut & coil spring	
Rear suspension	Multilink & coil spring	
Stabiliser bar	Front & rear	
Service brake	260mm (rear) 256mm (front)	
Tyre & wheel	195/55R 15" tyre & 6.5JJ x 15" alloy rim	
Spare wheel	T135/70D 16" tyre with 4T x 16" steel rim	
Dimension & weight		
Overall length	4465mm	
Overall width	1740mm	
Overall height	1420mm	
Wheelbase	2600 mm	
Front track	1475 mm	
Rear track	1470 mm	
Curb weight	1185 kg	1205 kg
Front overhang	855 mm	
Rear overhang	1010 mm	
Performance		
Maximum Speed	186 km/h	181 km/h
0 - 100km/h	12.0 sec	14.7 sec
Fuel consumption@90 km/h	6.1l/100 km	6.5l/100 km
Finishing (exterior)		
Side sill	Body colour	
Centre Pillar	Black	
Door sash	Black	
Outer door handle	Body colour	
Bumper	Body colour	
Radiator grille	Body colour with chrome & black ribs	
Side moulding	Body colour	
Rear garnish	Chrome	
Door mirror housing	Black	

Standard Features	1.6	1.6x
Seat & trims		
Front seat	With driver's height adjuster	
Rear seat	60/40 split high back	
Upholstery	Flat woven fabric with bolster	Leather
Floor carpet	Cut pile	
Finishing (interior)		
Steering trim	2-grain PU	2-grain with wood grain
Parking brake lever trim	Leather + silver	
Instrument panel strip	Silver	Wood grain
Convenient functions		
Alarm system	With ignition immobiliser	
Central door-lock	Electric Front & rear	
Power window	Electric Front & rear	
Footrest	Drivers	Drivers
Door mirror control	Electric remote control	Electric with remote fold back
Aircond system	Manual control with dial switch	Climate control
Lighting		
Headlamp	4 bulb halogen projected type	
Front fog lamp	Standard integrated in front turn lamp	
Room lamp	Front & rear reading lamp & C-pillar lamp	
Courtesy lamp	Standard on front door trim	
Safety		
Front SRS Air bags	Standard	
Side SRS Air bags	Standard	
ABS Brakes	Standard	
Traction Control	Standard	
Seat Belt Pre-tensioners	Standard	
Audio		
Radio Unit	2 DIN facia with RDS CD player and steering controls	
Audio Speakers	6 speaker standard on IP, door-trim & rear shelf	
Antenna	"Bee-sting" antenna on roof rear centre	



Proton Cars Australia Pty Limited
 ABN 35 076 002 590

PO Box 6445, Wetherill Park NSW 2164
 Tel • (02) 9828 9110 Fax • (02) 9828 9383

1800 652 708
www.proton.com.au

HANDLING BY LOTUS: WHAT IT MEANS TO YOU

Technically speaking, 'handling' is the term used to cover the dynamic behaviour of a vehicle. A car with 'good ride and handling', is a car that is responsive, but safe and with a comfortable ride at the same time. The elements that need to be in harmony for a great car: ride, handling, and steering combined, are summed up at Lotus by 'handling.'

RIDE

'Ride' relates to driver and passenger comfort. 'A good ride' ensures the car is able to isolate and cushion the occupants from bumps and potholes. For a good ride, suspension is paramount. It will absorb the impact of bad roads and support the body of the car.

HANDLING

'Handling' relates to stability and response. How well a car responds to the driver is linked to the car's stability. The more stable, the less responsive and vice versa. To be rated as 'having good handling', passenger cars aim for a compromise between stability and responsiveness. The challenge at Lotus, is to make a car exciting to drive but still be stable enough to take corners safely.

STEERING

The steering wheel is the only method in which the driver can control a vehicle. Other factors are determined largely by road and vehicle conditions, but steering is where the driver takes charge and determines the path of the vehicle. The manufacturer makes the connection between steering and the car. Steering must be given the right characteristics so that the driver has good control of the vehicle.



Proton Cars Australia Pty Limited
ABN 35 076 002 590

PO Box 6445, Wetherill Park NSW 2164
Tel • (02) 9828 9110 Fax • (02) 9828 9383

1800 652 708
www.proton.com.au

