

GEN.2



**3 YEAR
FACTORY BACKED
WARRANTY**

**7 YEAR
ANTI-CORROSION
WARRANTY**

**FREE 24 HR
ROADSIDE
ASSISTANCE**

**CAMPRO
DOHC
IAFM**

**LOTUS
RIDE
&
HANDLING**

STANDARD FEATURES

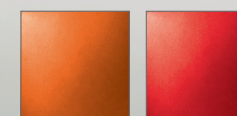
	G	GX	GXR
Power Steering	✓	✓	✓
Air Conditioning	✓	✓	✓
SRS Driver & Passenger Airbags	✓	✓	✓
Driver & Passenger Pre-tensioner Seatbelts	✓	✓	✓
Cup Holders	✓	✓	✓
Remote Keyless Entry	✓	✓	✓
Central Locking	✓	✓	✓
Alarm / Immobiliser	✓	✓	✓
Remote Keyless Boot Entry	✓	✓	✓
Auto Door Lock	✓	✓	✓
CD/MP3 Audio System	✓	✓	✓
Steering Wheel Audio Controls	✓	✓	✓
Power Windows Front & Rear	✓	✓	✓
Height Adjustable Steering Column	✓	✓	✓
Height Adjustable Drivers Seat	✓	✓	✓
Multi Function Trip Computer	✓	✓	✓
Front Door Pockets	✓	✓	✓

	G	GX	GXR
Reverse Sensors	✓	✓	✓
Rear Fog Lights	✓	✓	✓
Vanity Mirror on Sunvisor (driver)	✓	✓	✓
Vanity Mirror on Sunvisor (passenger)	✓	✓	✓
Collapsible Steering Column	✓	✓	✓
Rear Wiper	✓	✓	✓
Cruise Control (Automatic Only)	✓	✓	✓
Split Fold Rear Seats		60 / 40	
Exterior Mirror Operation		Electric	
Side Protector Moulds	Black	Body Colour	
Exterior Door Handle Colours	Black	Body Colour	
Upholstery & Seat Trim		Cloth	Leather
ABS (Anti Lock Brake System) with EBD	-	✓	✓
Rear Spoiler	-	✓	✓
Alloy Wheels	-	✓	✓
SRS Dual Side Airbags	-	-	✓
Front Fog Lights	-	-	✓

COLOUR RANGE



Solid White Tranquility Black Genetic Silver Metal Grey Passion Blue



Energy Orange Solid Red (GXR Only)

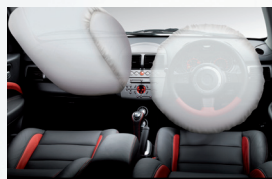


www.proton.com.au

All information detailed in this brochure is correct at the time of going to print. Proton Cars Australia reserve the right to make changes to the colours, features and/or the specifications detailed in this brochure as well as discontinue individual models without prior notice. Images are for display purposes only and may not represent vehicle specifications. Please contact your local Proton dealer to ensure that the vehicle delivered is in accordance with your expectations. Colour availability varies by state and model.

MEET THE PROTON GEN.2

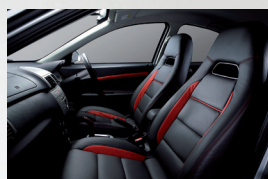
If its sports appeal you are after without the added expenses, the Proton GEN.2 is for you, it's sporty and stylish all rolled into one. Each time you sit behind the wheel you will experience superior ride and handling engineered by Lotus a wholly owned subsidiary of Proton. The Proton GEN.2 is the perfect package to suit the lifestyle of today.



Standard safety features include SRS airbags, front pretensioner seatbelts and ABS with EBD



The rear seats backrests can easily be folded flat enabling a whopping 700 Litre capacity.



The GXR features individual sports leather seats with a two tone trim.



The legendary Lotus ride & handling gives you greater control and stability.



Proton's Campro engine gives a quicker pick up, smoother cruising and better driveability.



It's sweeping curves and aggressive bumper and grille increase aerodynamics.

GENUINE ACCESSORIES

Alloy Wheels

Locking Wheel Nuts

Slimline Weathershields

Headlight Protectors

Bonnet Protector

Body Kit

Rear Spoiler

Rear Sun guard

Tow Bar

Reverse Sensors

Cruise Control Kit

Suspension lowering kit

Bluetooth handsfree kit

iPod interface kit

Proton Safety Kit

Dash Mat

Roof Racks

Sun Shades



TECHNICAL SPECIFICATIONS

	G	G	GX	GX	GXR	GXR
TRANSMISSION						
Transmission Type	Manual	Automatic	Manual	Automatic	Manual	Automatic
Transmission Model	5 Speed	4 Speed	5 Speed	4 Speed	5 Speed	4 Speed
	F5M41	F4A41	F5M41	F4A41	F5M41	F4A41
POWERTRAIN						
Engine	4-Cylinder In-Line DOHC Multi-Point Injection with IAFM					
Bore x Stroke (mm)	76.0 x 88.0					
Total Displacement (cc)	1597					
Compression Ratio	10:1					
Maximum Power	82kW / 6,500 rpm					
Maximum Torque	148Nm / 4,000 rpm					
Fuel System	Multi Point Injection					
PERFORMANCE						
Maximum Speed (s)	190	185	190	185	190	185
0-100 (sec)	11.2	13.5	11.2	13.5	11.2	13.5
Fuel Efficiency as per ADR 81/02 - Combined	7.1	7.9	7.1	7.9	7.1	7.9
CO2 (g per km) - Combined	170	187	170	187	170	187
CHASSIS						
Steering System	Rack and Pinion Hydraulic Power Steering					
Front Suspension	Mcpherson Strut, Coil Springs, Gas Dampers with Stabiliser Bar					
Rear Suspension	Multi Link, Coil Springs, Gas Dampers with Stabiliser Bar					
Minimum Turning Radius (mtrs)	5.4					
Front Brake	Ventilated Disc					
Rear Brake	Solid Disc					
Tyre Size	195 / 55 R15					
Wheel Size	15" Steel		15" Alloy		15" Alloy	
Spare Tyre	Space Saver					
Ground Clearance (mm)	150					
DIMENSIONS & WEIGHT						
Overall L x W x H (mm)	4310 x 1725 x 1435					
Wheel base (mm)	2600					
Track, Front / Rear (mm)	1475 / 1470					
Overhang Front / Rear (mm)	870 / 840					
Weight (kg)	1210	1235	1225	1250	1240	1265
Fuel Tank Capacity (Ltrs)	50					
Towing Capacity (Un-Braked / Braked)	500kg / 1000kg					
WARRANTY						
Warranty	3 year / 100,000km			3 year / Unlimited km		
Roadside Assistance	12 Months			3 years		